

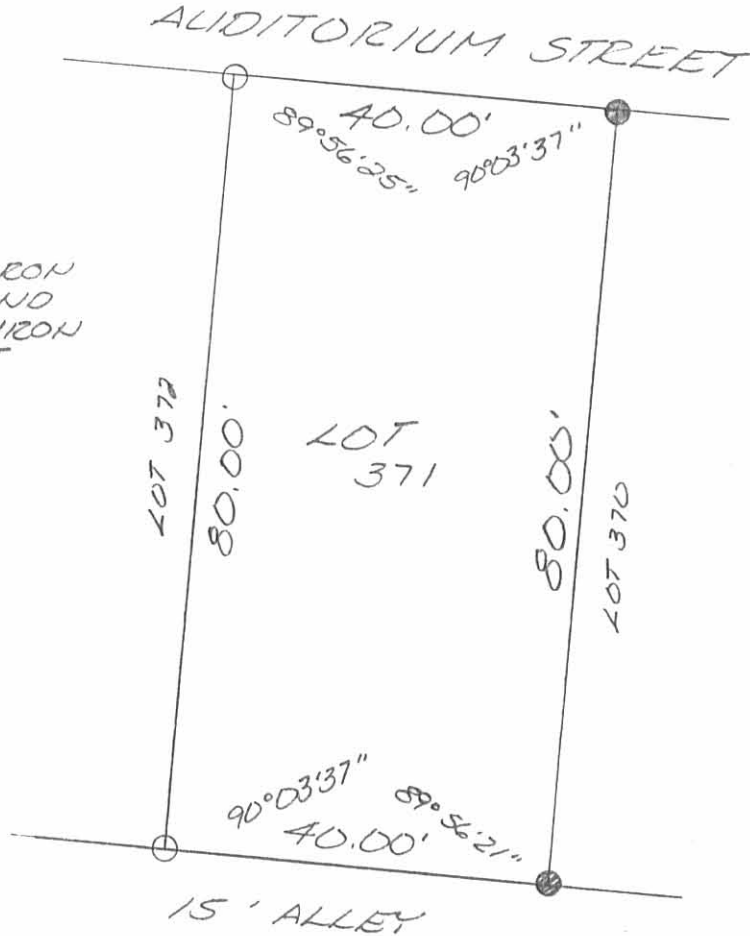
REC'D 1-28-99 SWY

SCALE: 1"=20'



LEGEND:

- = 5/8 INCH IRON BAR FOUND
- = 5/8 INCH IRON BAR SET



SURVEY OF LOT 371 ON
 ORCHARD ISLAND IN
 WASHINGTON TOWNSHIP,
 LOGAN COUNTY, OHIO
 ON JANUARY 28, 1999



9235 IP

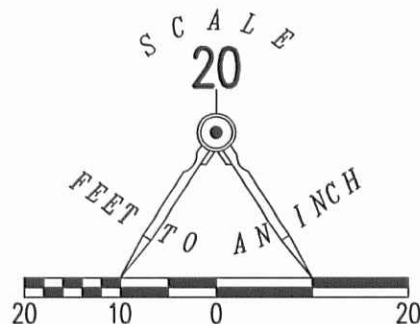
Leslie H. Geeslin
 LESLIE H. GEESLIN
 RUSHSVANIA, OHIO
 PH: (937) 468-2793
 FAX: (937) 468-2080

APPROVED

9-24-14

LEGEND

- 5/8 INCH IRON ROD SET WITH PLASTIC I.D. CAP STAMPED "LSM 7437"
- ⊙ 1 1/2 INCH IRON BAR FOUND
- 3/4 INCH IRON BAR FOUND



15' ALLEY

ORCHARD ISLAND
PLAT CABINET A, SLIDES 219-221

LOT 414

N 07°36'28" W
80.07'

LOT 415

S 07°36'27" E
80.08'

LOT 416

N 82°29'14" E
40.00'

40.00'
S 82°29'39" W
BASIS FOR BEARINGS

CRESCENT STREET (35')

ORCHARD AVENUE (35')

RETRACEMENT SURVEY OF
LOT 415
ORCHARD ISLAND
PLAT CABINET A, SLIDE 219
WASHINGTON TOWNSHIP
LOGAN COUNTY, OHIO

SURVEYED BY:

William K. Bruce

WILLIAM K. BRUCE
PROFESSIONAL SURVEYOR 7437
SEPTEMBER 16, 2014

COPYRIGHT 2014 BY:

LEE SURVEYING & MAPPING CO., INC.
117 North Madriver Street
BELLEFONTAINE, OHIO 43311
(937) 593-7335
WWW.LSMINC.US
surveys@lsminc.us



ORIGINAL STAMP IN GREEN

INDEXED ON MAP

9235 2P

2 WORKING DAYS

BEFORE YOU DIG

CALL TOLL FREE 800-362-2764

OHIO UTILITIES PROTECTION SERVICE

ADW D0814 57940814 L-5794-3