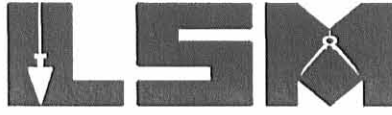


REC'D 6-1-06 S.M.O.N.

# Lee Surveying and Mapping Co., Inc.

Land Surveys • Topography • Subdivisions • Construction Layout

117 N. Madriver St.  
Bellefontaine OH 43311



Phone: (937) 593-7335  
Fax: (937) 593-7444

**1975-2005 - 30 YEARS OF EXCELLENCE**

**KEEGAN  
89.762 ACRES  
TRACT B-REVISED**

Lying in Section 23, Town 7, Range 8, Washington Township, Logan County, Ohio.

Being out of the remainder of the Sue Anne Keegan 80 acre tract and all of the 57.564 acre tract as deeded and described in Official Record 84, Page 931, Parcels IV and VII of the Logan County Records of Deeds and being more particularly described as follows:

Beginning at a 5/8 inch iron rod set at the northeast corner of Section 23.

THENCE, with the east line of Section 23, S 6°-54'-28"W, a distance of 976.51 feet to a 5/8 inch iron rod set.

THENCE, N 83°-27'-10"W, a distance of 1319.65 feet to a 5/8 inch iron rod set.

THENCE, S 7°-19'-38"W, a distance of 1062.85 feet to a 5/8 inch iron rod found.

THENCE, with the north line of the Dallas Butler 1.380 acre tract (O.R. 803, Pg. 721), N 78°-45'-06"W, a distance of 558.51 feet to a 3/4 inch iron pipe found on the center-line of County Highway 54, passing a 5/8 inch iron rod found at 370.57 feet.

THENCE, with the center-line of County Highway 54, N 78°-45'-06"W, a distance of 779.63 feet to a 1 inch square iron bolt found.

THENCE, with the east line of the J. Robert Renick, Trustee 108.352 acre tract (O.R. 588, Pg. 805, Parcel Eight), N 6°-27'-22"E, a distance of 1947.60 feet to a concrete post found on the north line of Section 23 at the northwest corner of the northeast quarter of said Section 23, passing 5/8 inch iron rods set at 30.10 feet, 914.96 feet, 1419.28 feet and 1942.60 feet.

THENCE, with the north line of Section 23 and the south line of The Trustees of the Methodist Church of Lewistown 100 acre tract (Vol. 175, Pg. 527), S 83°-04'-01"E, a distance of 177.57 feet to a MAG nail set on the center-line of Ohio Route 235, passing 5/8 inch iron rods set at 5.00 feet and 82.93 feet.

THENCE, with the center-line of Ohio Route 235 (variable widths), S 10°-17'-10"W, a distance of 115.05 feet to a MAG nail set.

THENCE, with the lines of the Rusty L. Nafzger 2.650 acre tract (O.R. 711, Pg. 116), the following two courses:

S 77°-51'-50"E, a distance of 550.00 feet to a 5/8 inch iron rod set, passing a 5/8 inch iron rod set at 67.45 feet.

N 10°-17'-10"E, a distance of 165.01 feet to a 5/8 inch iron rod set on the north line of Section 23.

THENCE, with the north line of Section 23, S 83°-04'-01"E, a distance of 1948.84 feet to the point of beginning.

Containing 89.762 acres, of which 3.663 acres are within the highway rights-of-way.

The basis for bearings is the east line of Section 14, being N 7°-13'-37"E, and all other bearings are from angles and distances measured in a field survey by Lee Surveying and Mapping Co., Inc. on September 30, 2005 and again on May 25, 2006.



ORIGINAL STAMP IN GREEN

Description prepared by:

Jeffrey I. Lee  
Professional Surveyor 6359  
May 25, 2006

4121056



REC'D 6-1-06 SMJ/OK

# Lee Surveying and Mapping Co., Inc.

Land Surveys • Topography • Subdivisions • Construction Layout

117 N. Madriver St.  
Bellefontaine OH 43311



Phone: (937) 593-7335  
Fax: (937) 593-7444

**1975-2005 - 30 YEARS OF EXCELLENCE**

**KEEGAN  
50.183 ACRES  
TRACT G**

Lying in Section 23, Town 7, Range 8, Washington Township, Logan County, Ohio.

Being out of the remainder of the Sue Anne Keegan 80 acre tract as deeded and described in Official Record 84, Page 931, Parcel IV of the Logan County Records of Deeds and being more particularly described as follows:

Commencing at a 5/8 inch iron rod set at the northeast corner of Section 23.

THENCE, with the east line of Section 23, S 6°-54'-28"W, a distance of 976.51 feet to a 5/8 inch iron rod set at the TRUE POINT OF BEGINNING.

THENCE, with the east line of Section 23, S 6°-54'-28"W, a distance of 1433.15 feet to a 5/8 inch iron rod set.

THENCE, with the east line of Section 23 and the west line of Michael Lee Smith 1.30 acre tract (O.R. 688, Pg. 766), S 6°-54'-28"W, a distance of 242.00 feet to a MAG nail found over a stone at the southeast corner of the northeast quarter of Section 23 on the center-line of County Highway 54, passing a 5/8 inch iron rod set at 212.00 feet.

THENCE, with the south line of the northeast quarter of Section 23 and center-line and the center-line extended of County Highway 54 (60 feet wide), N 83°-02'-50"W, a distance of 938.27 feet to a 5/8 inch iron rod found.

THENCE, with the lines of the Larry A. Snipes 3.356 acre tract (O.R. 330, Pg. 256), the following two courses:

N 62°-33'-19"W, a distance of 397.97 feet to a 5/8 inch iron rod found.

S 49°-49'-39"W, a distance of 29.39 feet to a 5/8 inch iron rod found.

THENCE, with the east lines of the Reichert Ltd. 78.733 acre tract (O.R. 330, Pg. 77) and the Dallas Butler 1.380 acre tract (O.R. 803, Pg. 721), N 7°-19'-38"E, a distance of 485.20 feet to a 5/8 inch iron rod found, passing 5/8 inch iron rods set at 124.56 feet and 209.16 feet.

THENCE, N 7°-19'-38"E, a distance of 1062.85 feet to a 5/8 inch iron rod set.

THENCE, S 83°-27'-10"E, a distance of 1319.65 feet to the point of beginning.

Containing 50.183 acres, of which 1.242 acres are within the highway rights-of-way.

The basis for bearings is the east line of Section 14, being N 7°-13'-37"E, and all other bearings are from angles and distances measured in a field survey by Lee Surveying and Mapping Co., Inc. on September 30, 2005 and again on May 25, 2006.



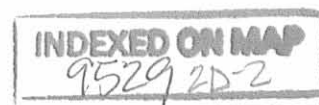
ORIGINAL STAMP IN GREEN

Description prepared by:

A handwritten signature in black ink, appearing to read 'Jeffrey I. Lee'.

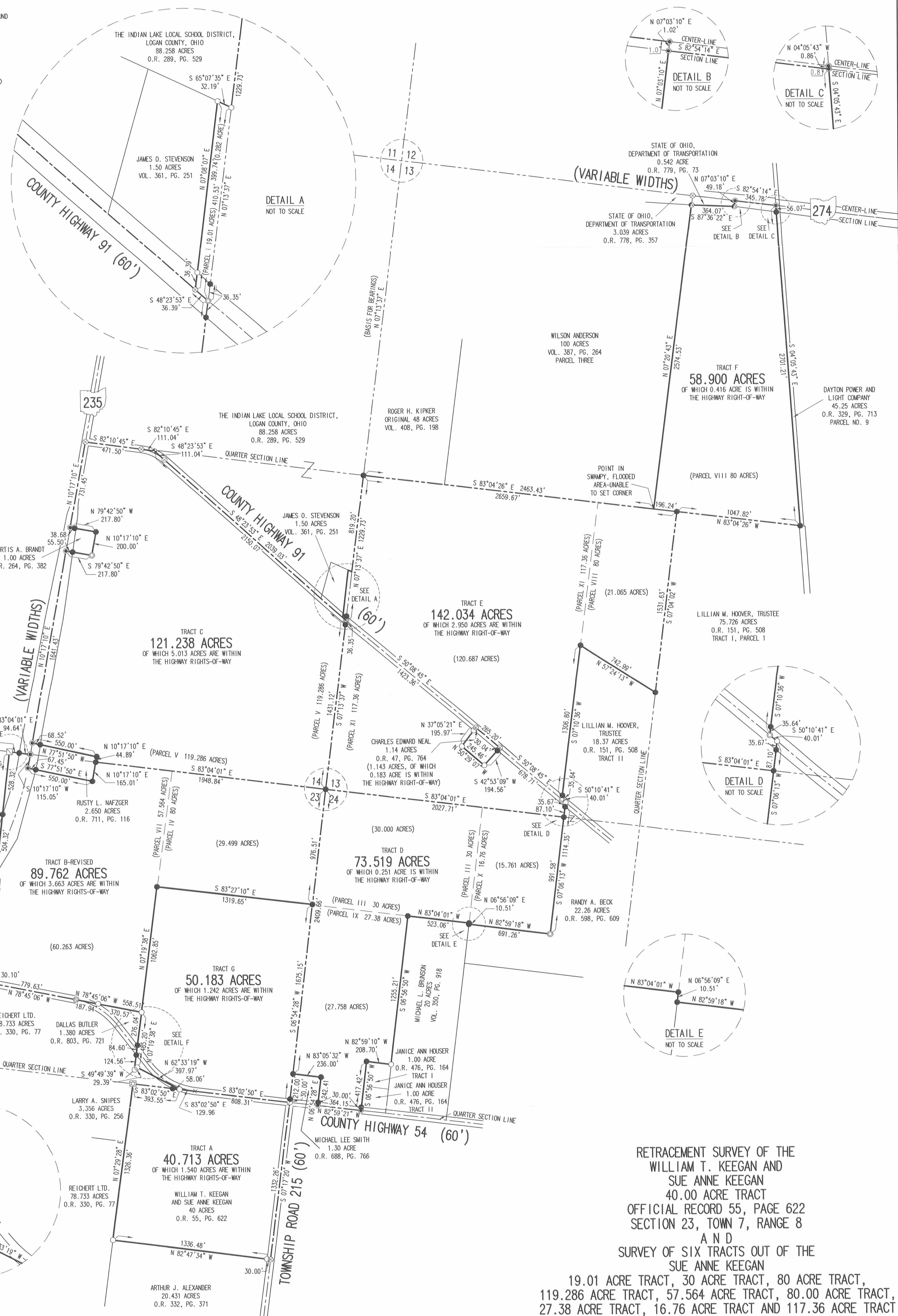
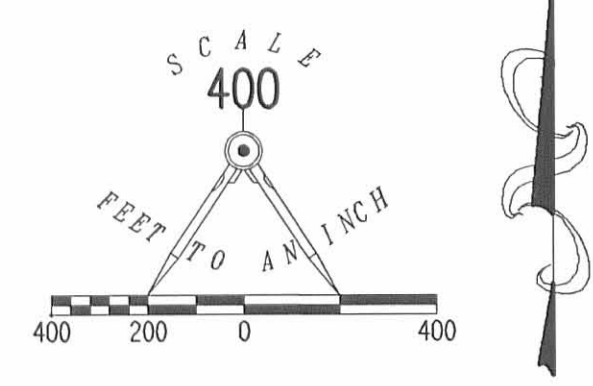
Jeffrey I. Lee  
Professional Surveyor 6359  
May 25, 2006

4121056



REV'D 6-1-06 SML/CUC

- LEGEND:
- ⊗ RAILROAD SPIKE FOUND
  - 5/8 INCH IRON ROD FOUND
  - 5/8 INCH IRON ROD SET
  - ⊙ 1-1/2 INCH IRON PIPE FOUND
  - ⊠ 1/2 INCH SQUARE BAR FOUND
  - 1 INCH BAR FOUND
  - ⊙ 3/8 INCH IRON ROD FOUND
  - MAG NAIL SET
  - ⊙ MAG NAIL FOUND OVER STONE FOUND
  - ⊠ STONE FOUND
  - ⊙ CONCRETE MONUMENT FOUND
  - ⊙ 3/4 INCH IRON PIPE FOUND
  - 1 INCH SQUARE IRON BOLT FOUND
  - ⊙ BRIDGE SPIKE FOUND
  - ⊠ CONCRETE POST FOUND



RETRACEMENT SURVEY OF THE  
WILLIAM T. KEEGAN AND  
SUE ANNE KEEGAN  
40.00 ACRE TRACT  
OFFICIAL RECORD 55, PAGE 622  
SECTION 23, TOWN 7, RANGE 8  
A N D  
SURVEY OF SIX TRACTS OUT OF THE  
SUE ANNE KEEGAN  
19.01 ACRE TRACT, 30 ACRE TRACT, 80 ACRE TRACT,  
119.286 ACRE TRACT, 57.564 ACRE TRACT, 80.00 ACRE TRACT,  
27.38 ACRE TRACT, 16.76 ACRE TRACT AND 117.36 ACRE TRACT  
OFFICIAL RECORD 84, PAGE 931  
PARCELS I, III, IV, V, VII, VIII, IX, X AND XI  
SECTIONS 14, 24, 23, AND 13, TOWN 7, RANGE 8  
WASHINGTON TOWNSHIP  
LOGAN COUNTY, OHIO



SURVEYED BY:  
JEFFREY L. LEE  
PROFESSIONAL SURVEYOR 6359  
SEPTEMBER 30, 2005  
REVISED MAY 25, 2006 (REVISE TRACT B, ADD TRACT G)

COPYRIGHT 2005 BY:  
LEE SURVEYING & MAPPING CO., INC.  
117 North Madison Street  
BELLEFONTAINE, OHIO 43311  
(937) 593-7335

2 WORKING DAYS  
BEFORE YOU DIG  
CALL TOLL FREE 800-362-2764  
OHIO UTILITIES PROTECTION SERVICE.



ROTHHAR DESCRIPTION  
Sec. 13, T-7S, R-8E  
Washington Township  
January 23, 1964

Tract 1

The following described real estate situated in Washington Township, Logan County, Ohio and being part of Section 13, Town 7, South, Range 8 East and more particularly described as follows:

Beginning at an iron bar in the center of State Route 274 at the northeast corner of Wilson Anderson's 100.00 acre tract as shown in Logan County Engineer's field book 390-B, page 35; thence with the centerline of said S. R. 274, S.  $89\frac{1}{2}^{\circ}$  E. 10.71 chains to the west right of way line of the T. & O. C. R. R.; thence with said west line S.  $10\frac{1}{4}^{\circ}$  E. 40.82 chains to the northline of Lillian Hoover's 74.73 acre tract; thence with said north line, N.  $89\frac{3}{4}^{\circ}$  W. 15.92 chains to a post at the northwest corner of said tract; thence with said Hoover's west line S.  $1^{\circ}$  W. 23.18 chains to a post at the northeast corner of said Hoover's 18.37 acre tract; thence with the northline of said tract, N.  $63\frac{3}{4}^{\circ}$  W. 11.21 chains to a post at the northwest corner of said tract and in the east line of R. R. Rothhar's 48.22 acre tract; thence with said east line, N.  $1^{\circ}$  E. 18.33 chains to a post in the south line of said Anderson's 100.00 acre tract; thence with said south line, S.  $89^{\circ}34'$  E. 7.15 chains to a post at the southeast corner of said tract; thence with said Anderson's east line N.  $1^{\circ}$  E. 40.15 chains to the place of beginning.

Containing 80.0 acres more or less.

INDEXED ON MAP

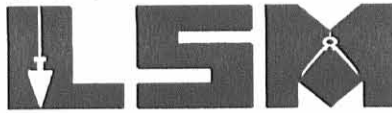
925A 3D

REC'D 9-19-06 SUM OK

# Lee Surveying and Mapping Co., Inc.

Land Surveys • Topography • Subdivisions • Construction Layout

117 N. Madriver St.  
Bellefontaine OH 43311



Phone: (937) 593-7335  
Fax: (937) 593-7444

**1975-2005 - 30 YEARS OF EXCELLENCE**

**KEEGAN  
25.092 ACRES**

Lying in Section 23, Town 7, Range 8, Washington Township, Logan County, Ohio.

Being out of the remainder of the Sue Anne Keegan 80 acre tract as deeded and described in Official Record 84, Page 931, Parcel IV, of the Logan County Record of Deeds and being more particularly described as follows:

Commencing on a 5/8 inch iron rod set at the northeast corner of Section 23.

THENCE, with the east line of Section 23, the east line of the Vincent R. Bailey, Trustee 89.762 acre tract (O.R. 835, Page 76, Tract B) and the west line of the Vincent R. Bailey, Trustee 73.519 acre tract (O.R. 835, Page 76, Tract D), S 6°-54'-28"W, a distance of 976.51 feet to a 5/8 inch iron rod set at the TRUE POINT OF BEGINNING.

THENCE, with the east line of Section 23 and the west lines of the said 73.519 acre tract and the Michael Lee Smith 1.30 acre tract (O.R. 688, Pg. 766), S 6°-54'-28"W, a distance of 1675.15 feet to a MAG nail found over a stone found at the southeast corner of the northeast quarter of Section 23 on the intersection of center-lines of County Highway 54 and Township Road 215, passing a 5/8 inch iron rod set at 1645.15 feet.

THENCE, with the south line of the northeast quarter of Section 23 and the center-line of County Highway 54 (60 feet wide), N 83°-02'-50"W, a distance of 653.38 feet to a MAG nail set.

THENCE, N 6°-54'-28"E, a distance of 1670.52 feet to a 5/8 inch iron rod set.

THENCE, with a south line of the aforesaid 89.762 acre tract, S 83°-27'-10"E, a distance of 653.40 feet to the point of beginning.

Containing 25.092 acres, of which 0.450 acre is within the highway right-of-way.

The basis for bearings is the east line of Section 23, being S 6°-54'-28"W, and all other bearings are from angles and distances measured in a field survey by Lee Surveying and Mapping Co., Inc. on September 14, 2006.

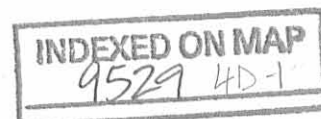


ORIGINAL STAMP IN GREEN

Description prepared by:

Jeffrey I. Lee  
Professional Surveyor 6359  
September 14, 2006

4121096



REC'D 9-19-06 SWM/OK

# Lee Surveying and Mapping Co., Inc.

Land Surveys • Topography • Subdivisions • Construction Layout

117 N. Madriver St.  
Bellefontaine OH 43311



Phone: (937) 593-7335  
Fax: (937) 593-7444

**1975-2006 - 30 YEARS OF EXCELLENCE**

**KEEGAN  
25.091 ACRES**

Lying in Section 23, Town 7, Range 8, Washington Township, Logan County, Ohio.

Being out of the remainder of the Sue Anne Keegan 80 acre tract as deeded and described in Official Record 84, Page 931, Parcel IV, of the Logan County Record of Deeds and being more particularly described as follows:

Commencing on a 5/8 inch iron rod set at the northeast corner of Section 23.

THENCE, with the east line of Section 23, the east line of the Vincent R. Bailey, Trustee 89.762 acre tract (O.R. 835, Page 76, Tract B) and the west line of the Vincent R. Bailey, Trustee 73.519 acre tract (O.R. 835, Page 76, Tract D), S 6°-54'-28"W, a distance of 976.51 feet to a 5/8 inch iron rod set.

THENCE, with a south line of the said 89.762 acre tract, N 83°-27'-10"W, a distance of 653.40 feet to a 5/8 inch iron rod set at the TRUE POINT OF BEGINNING.

THENCE, S 6°-54'-28"W, a distance of 1670.52 feet to a MAG nail set on the south line of the northeast quarter of Section 23 and the center-line of County Highway 54, passing a 5/8 inch iron rod set at 1640.52 feet.

THENCE, with the south line of the northeast quarter of Section 23 and the center-line and the center-line extended of County Highway 54 (60 feet wide), N 83°-02'-50"W, a distance of 284.89 feet to a 5/8 inch iron rod found.

THENCE, with the lines of the Larry A. Snipes 3.356 acre tract (O.R. 330, Pg. 256), the following two courses:

N 62°-33'-19"W, a distance of 397.97 feet to a 5/8 inch iron rod found.

S 49°-49'-39"W, a distance of 29.39 feet to a 5/8 inch iron rod found.

THENCE, with the east lines of the Reichert Ltd. 78.733 acre tract (O.R. 330, Pg. 77), the Dallas Butler 1.380 acre tract (O.R. 803, Pg. 721) and the aforesaid 89.762 acre tract, N 7°-19'-38"E, a distance of 1548.05 feet to a 5/8 inch iron rod set, passing 5/8 inch iron rods set at 124.56 feet and 209.16 feet and passing a 5/8 inch iron rod found at 485.20 feet.

THENCE, with a south line of the said 89.762 acre tract, S 83°-27'-10"E, a distance of 666.25 feet to the point of beginning.

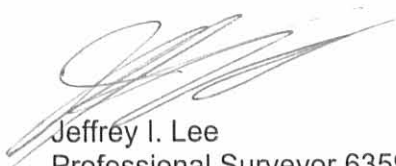
Containing 25.091 acres, of which 0.792 acre is within the highway right-of-way.

The basis for bearings is the east line of Section 23, being S 6°-54'-28"W, and all other bearings are from angles and distances measured in a field survey by Lee Surveying and Mapping Co., Inc. on September 14, 2006.

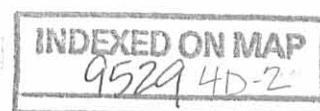


ORIGINAL STAMP IN GREEN

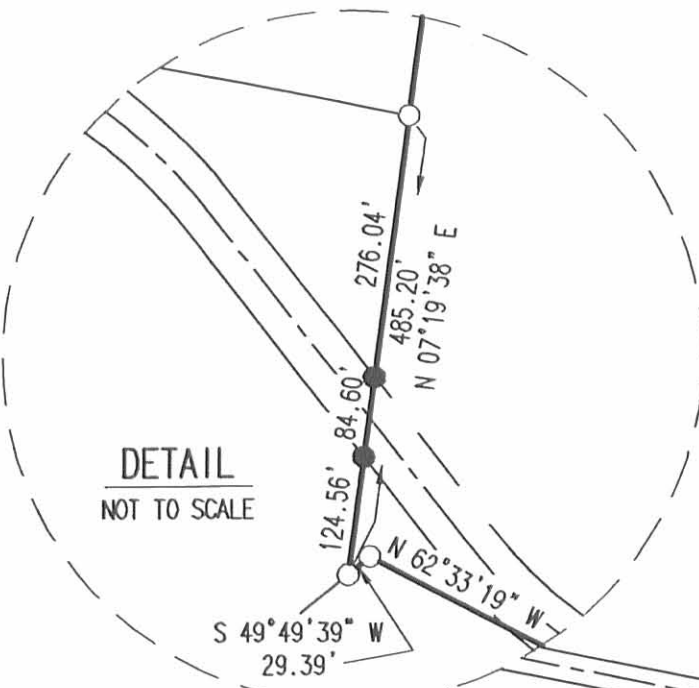
Description prepared by:

  
Jeffrey I. Lee  
Professional Surveyor 6359  
September 14, 2006

4121096



REC'D 9-19-06 SWY OK



DETAIL  
NOT TO SCALE

VINCENT R. BAILEY, TRUSTEE  
89.762 ACRES  
O.R. 835, PG. 76  
TRACT B

REICHERT LTD.  
78.733 ACRES  
O.R. 330, PG. 77

DALLAS BUTLER  
1.380 ACRES  
O.R. 803, PG. 721

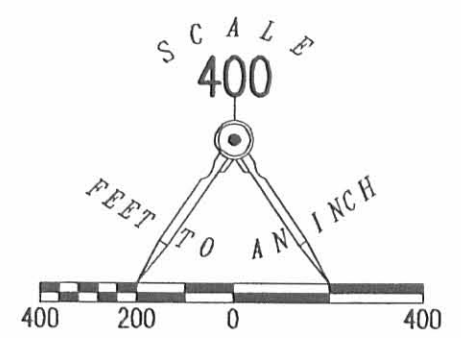
LARRY A. SNIPES  
3.356 ACRES  
O.R. 330, PG. 256

MICHAEL LEE SMITH  
1.30 ACRE  
O.R. 688, PG. 766

VINCENT R. BAILEY, TRUSTEE  
73.519 ACRES  
O.R. 835, PG. 76  
TRACT D

INDEXED ON MAP  
9529 4D

TOWNSHIP ROAD 215 (60')  
COUNTY HIGHWAY 54 (60')



SURVEY OF TWO TRACTS OUT OF THE  
SUE ANNE KEEGAN  
80 ACRE TRACT  
OFFICIAL RECORD 84, PAGE 931  
PARCEL IV  
SECTION 23, TOWN 7, RANGE 8  
WASHINGTON TOWNSHIP  
LOGAN COUNTY, OHIO



SURVEYED BY:  
*[Signature]*  
JEFFREY I. LEE  
PROFESSIONAL SURVEYOR 6359  
SEPTEMBER 14, 2006

COPYRIGHT 2006 BY:  
LEE SURVEYING & MAPPING CO., INC.  
117 North Madriver Street  
BELLEFONTAINE, OHIO 43311  
(937) 593-7335  
KSR D0906 4121096 L-4121-3

2 WORKING DAYS  
BEFORE YOU DIG  
CALL TOLL FREE 800-362-2764  
OHIO UTILITIES PROTECTION SERVICE