

July 9-1928
Hut,
Wright
Ed etc.

Grey and Shoemaker Survey.
Lots 206-207-208 W. Liberty

Shoemaker Deed Vol. 122 Page 61

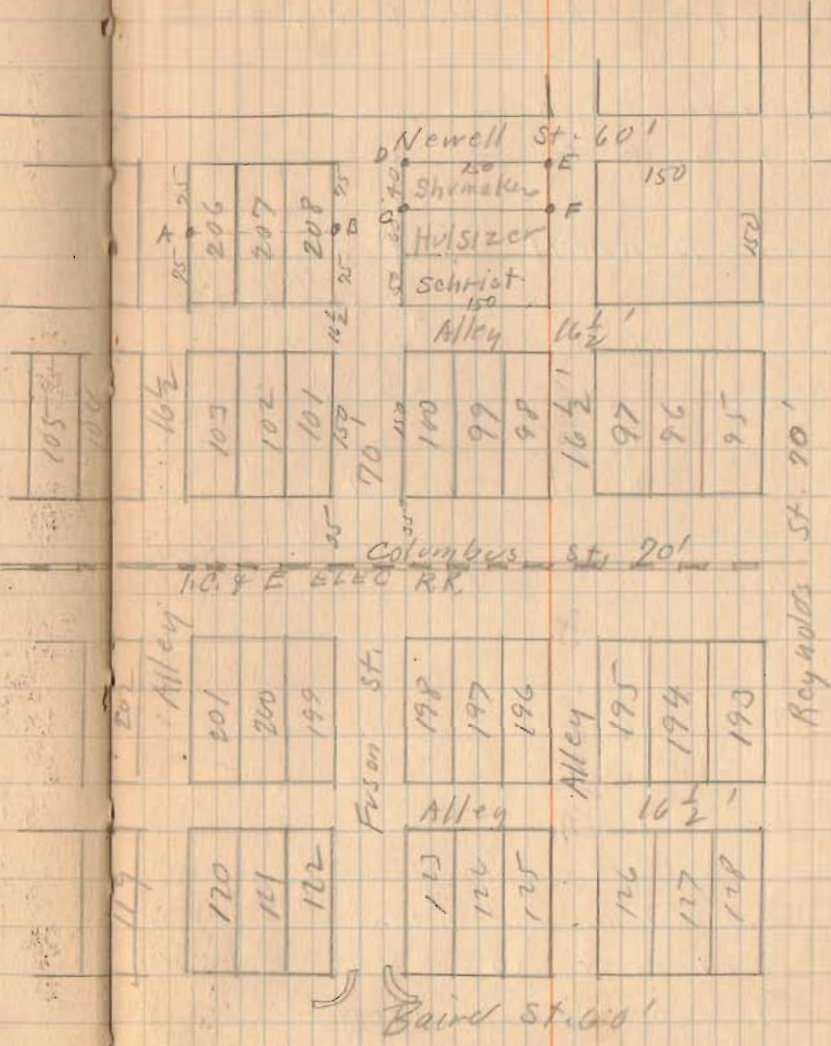
Hulsizer Deed Vol. 103 Page 579

Scerist Deed Vol. 103 Page 390

Grey Deed Vol. 125 Page 22

Krabill Deed Vol. 116 Page 176

All Lots shown 50' X 150'
Lots on this page as
shown on Plat Book



INDEXED ON MAP

(Continued)

Quey and Shoemaker Survey (Continued)

See Page 34 for General Plan
 Used E of Fuson st at
 Columbus and Baird and
 Produced this to Newell

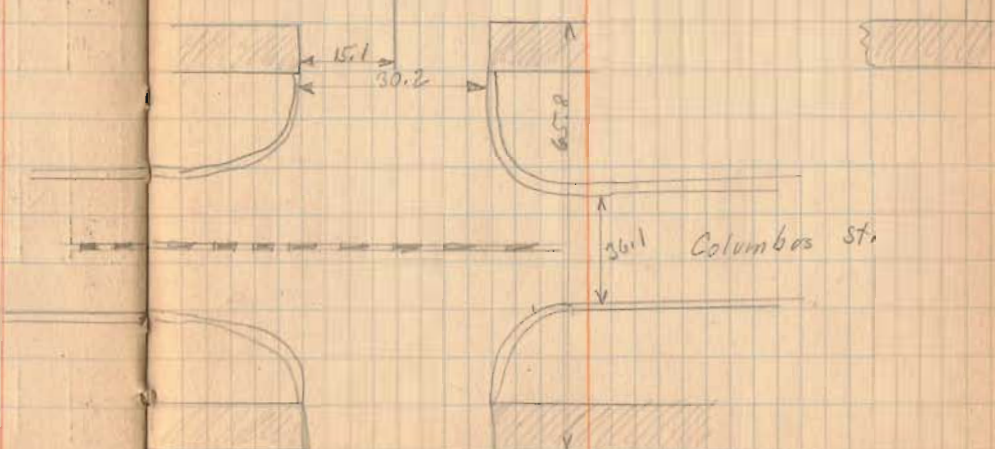
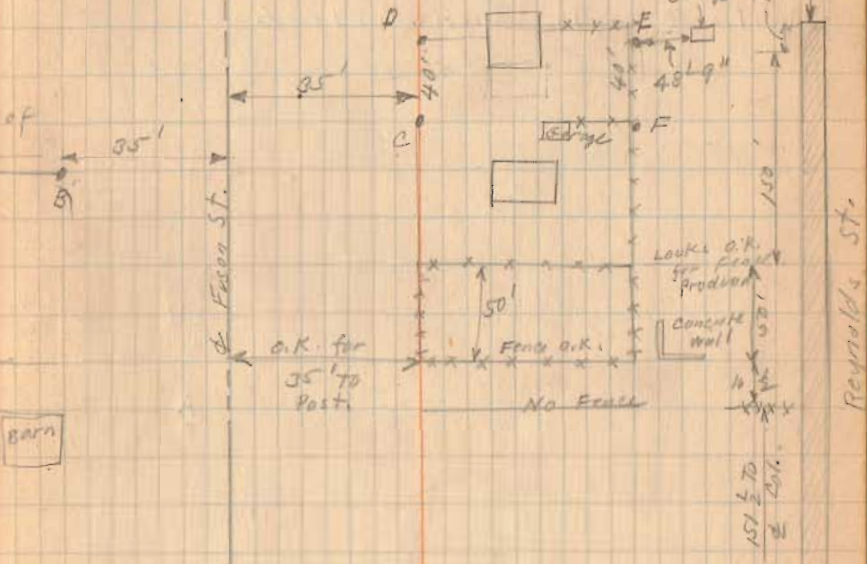
- A 2" Iron Pipe Plow
- B 2" " " "
- C 1" Iron " "
- D Stake " "
- E " " "
- F Ford Axel " "



- CD = 40'
- EF = 40'
- DE = 150'
- CF = 150'
- AB = 150'

CD Parallel To Columbus and Distance
 as shown on Page 34

AB Parallel To Columbus and distance
 as shown on Page 34



(Continued)

7-7-28

36

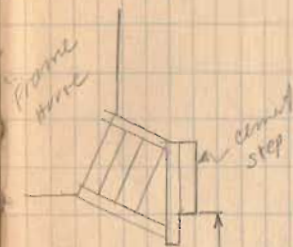
Grey and Shoemaker Survey (Continued)

Witnesses To Irons Placed.

Board
Fence

A

B



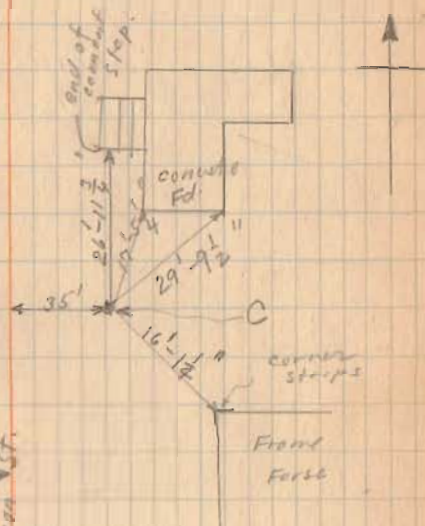
40'-5"

19 1/2"

24'-4 1/2"

35'

31'-0"

concrete
walk.Board
FenceBoard
Fence