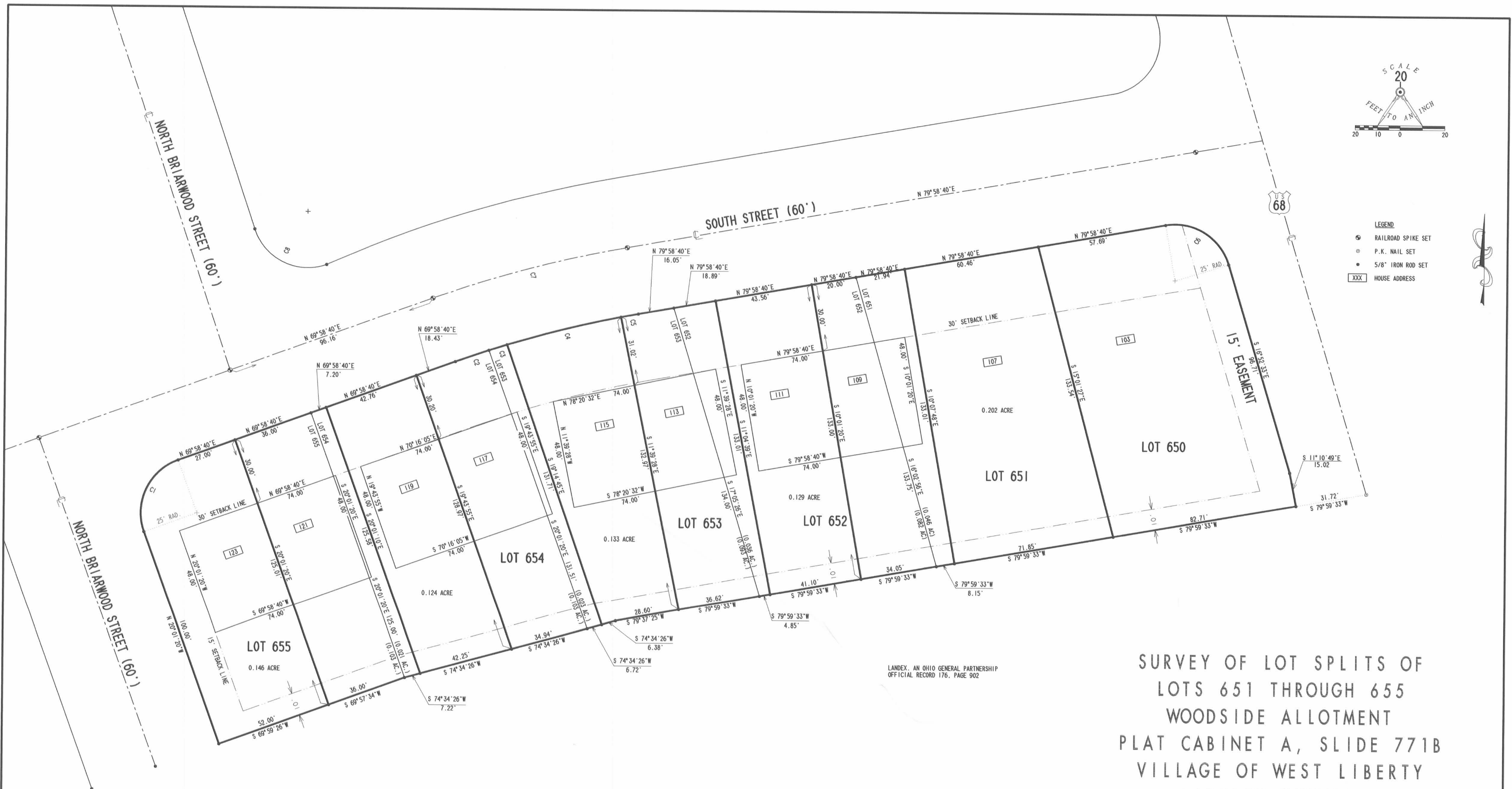


- LEGEND**
- ⊙ RAILROAD SPIKE SET
 - ⊙ P.K. NAIL SET
 - ⊙ 5/8" IRON ROD SET
 - XXX HOUSE ADDRESS



LANDEX, AN OHIO GENERAL PARTNERSHIP
OFFICIAL RECORD 176, PAGE 902

SURVEY OF LOT SPLITS OF
LOTS 651 THROUGH 655
WOODSIDE ALLOTMENT
PLAT CABINET A, SLIDE 771B
VILLAGE OF WEST LIBERTY
LIBERTY TOWNSHIP
LOGAN COUNTY, OHIO

CURVE	DELTA ANGLE	RADIUS	ARC	TANGENT	CHORD	CHORD BEARING
C 1	90°00'00"	25.00'	39.27'	25.00'	35.36'	N 24°58'40"E
C 2	01°51'42"	484.45'	15.74'	7.87'	15.74'	N 70°54'31"E
C 3	01°00'17"	484.45'	8.49'	4.25'	8.49'	N 72°20'29"E
C 4	06°12'02"	484.45'	52.43'	26.24'	52.40'	N 75°56'39"E
C 5	00°55'53"	484.45'	7.88'	3.94'	7.88'	N 79°31'15"E
C 6	83°08'47"	25.00'	36.28'	22.18'	33.18'	S 58°26'57"E
C 7	09°59'53"	514.45'	89.77'	45.00'	89.66'	N 74°58'40"E
C 8	91°27'59"	25.00'	39.91'	25.65'	35.80'	S 64°17'20"E

2 WORKING DAYS
BEFORE YOU DIG
CALL TOLL FREE 800-362-2764
OHIO UTILITIES PROTECTION SERVICE.



SURVEYED BY:
Jeffrey I. Lee
JEFFREY I. LEE
PROFESSIONAL SURVEYOR 6359
AUGUST 7, 1995
REVISED AUGUST 16, 1995

COPYRIGHT 1995 BY:
LEE SURVEYING & MAPPING CO.
143 East Columbus Avenue
BELLEFONTAINE, OHIO 43311
(615) 693-7335

ORIGINAL STAMP IN GREEN

D 264 LAND4SP L-1941-1