

1815 1P-1

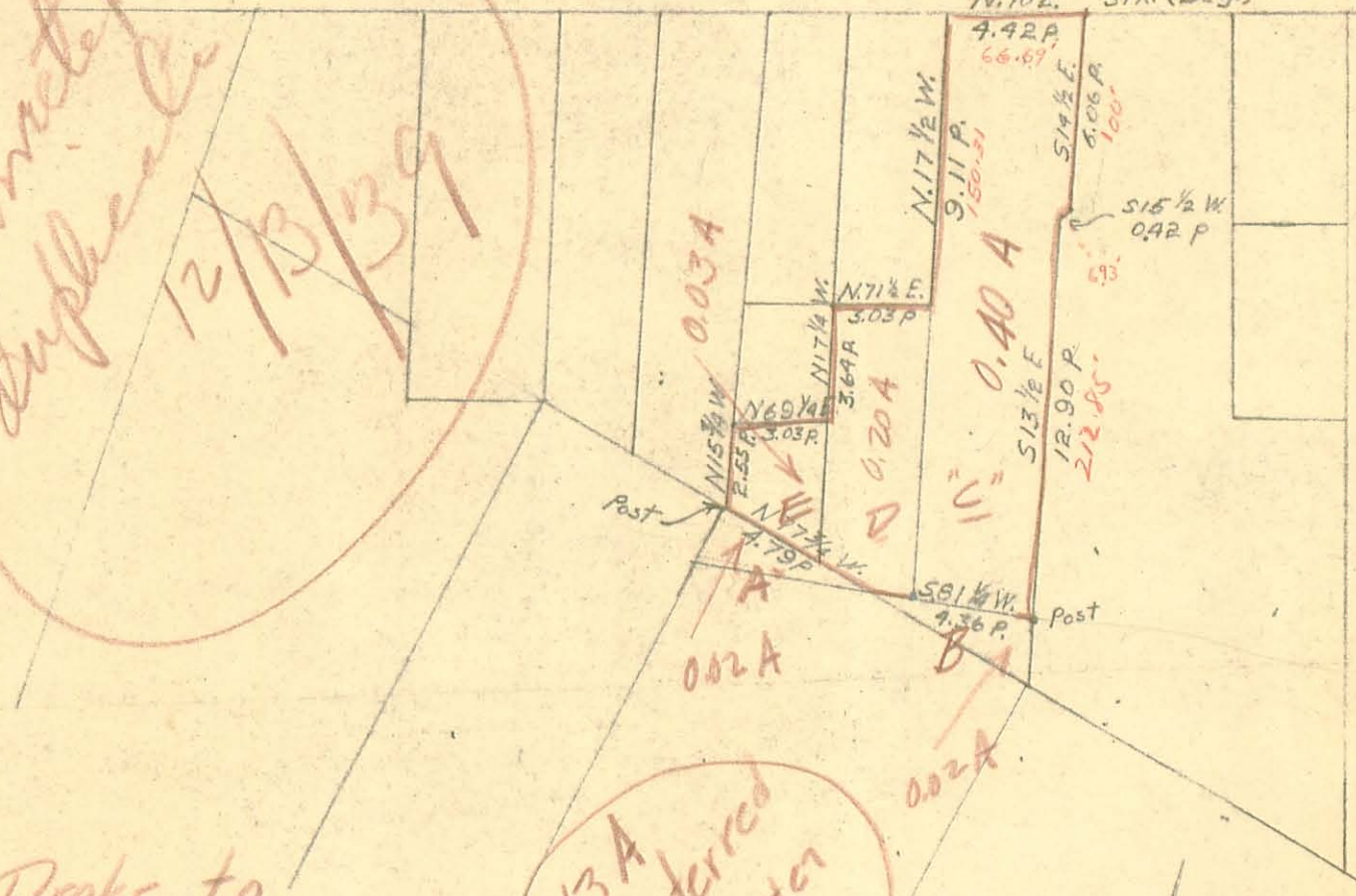
INDEXED ON DRAW

EAST

STREET

N. 70 E. Stk. (Beg.)

*Amstel  
Duplex  
12/13/39*



*Drake to  
Charles E Patten*

*1-8-20 122-490*

*Tracts A, C, D, E 0.63 A.*

*Patten to*

*Lourence Boshong Property*

*10-8-20*

*124-152*

*Bushong, Cla, saddle, & Mohr*

*West Mansfield, Ohio*

*Tracts A, C, D, E*

*Scale: 100 ft. = 1 in.*

*0.65 Acres*

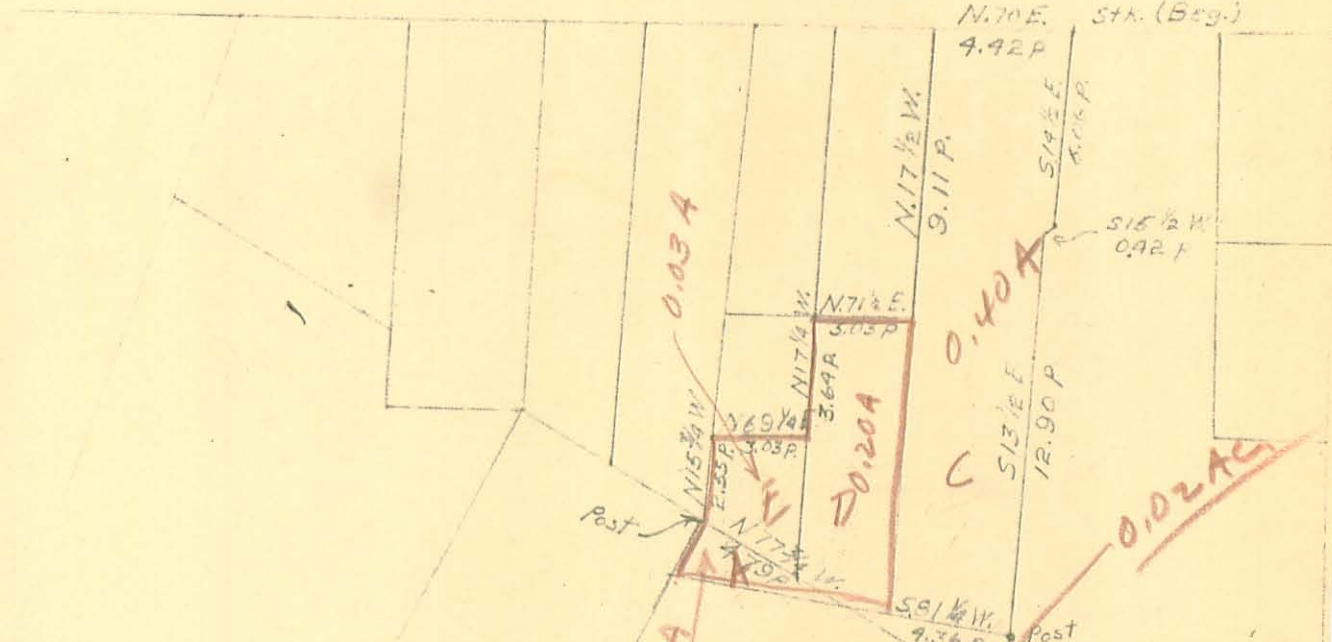
*Office of County Engineer*

*transferred to Boshong  
0.43 A  
should have transferred  
0.43 A to 0.02  
0.43 A to 0.02*

*I  
J.H.T.*



EAST STREET



L. E. Bushong to  
John E. Clapsaddle  
1-20-22 127-345

Tracts A, D, E 0.25 A.

John E. Clapsaddle to  
Howard Clapsaddle

11-3-23 - 128-332 Property of

Tract D 0.20 A

Patten to  
John D. Huttman  
3-19-26 131-261

~~John~~  
L. E. Bushong to  
C E Patten  
4-4-24 129-140  
Tracts B and C 0.02 + 40

Scale: 100 ft = 1"   
This tract 0.16   
carried as 0.40   
then changed to   
0.40 when transfer   
made to Patten   
0.02 not   
transferred.   
Dk. 1939 Dup   
City Engineer

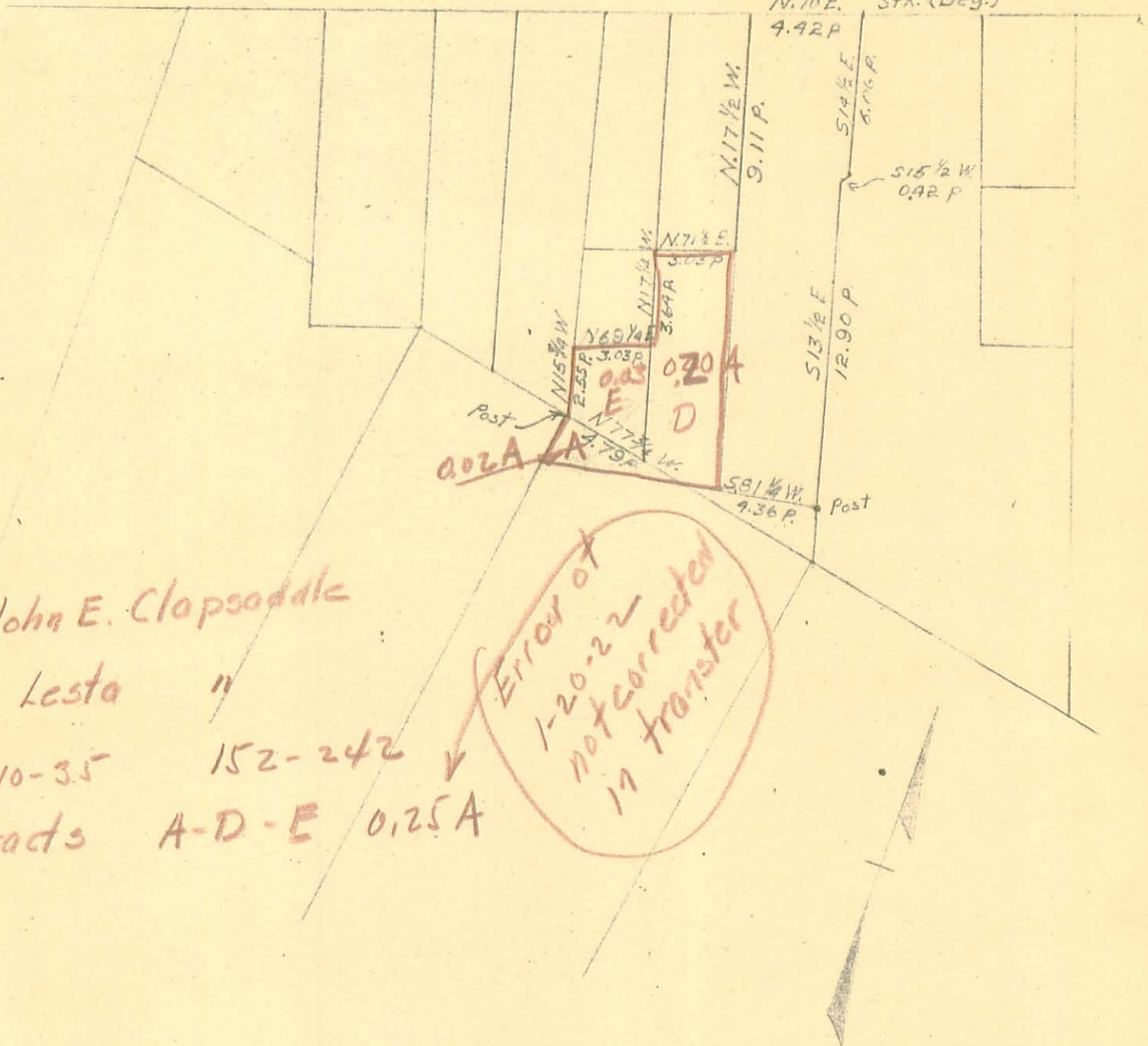
INDEXED ON MAP  
1815 1P-2.

II

EAST

STREET

N. 70° E. Stk. (Beg.)  
4.42 P



John E. Clapsaddle  
 to Lesta "  
 6-10-35 152-242  
 Tracts A-D-E 0.25A

Error of  
 1-20.22  
 not corrected  
 in transfer

Property of  
 Bushong, Clapsaddle, & Mann  
 West Mansfield, Ohio

Scale: 100 ft. = 1 in. Dec. 8, 1939  
 Office of County Engineer

INDEXED ON MAP  
 1015 1P-3

III

1015