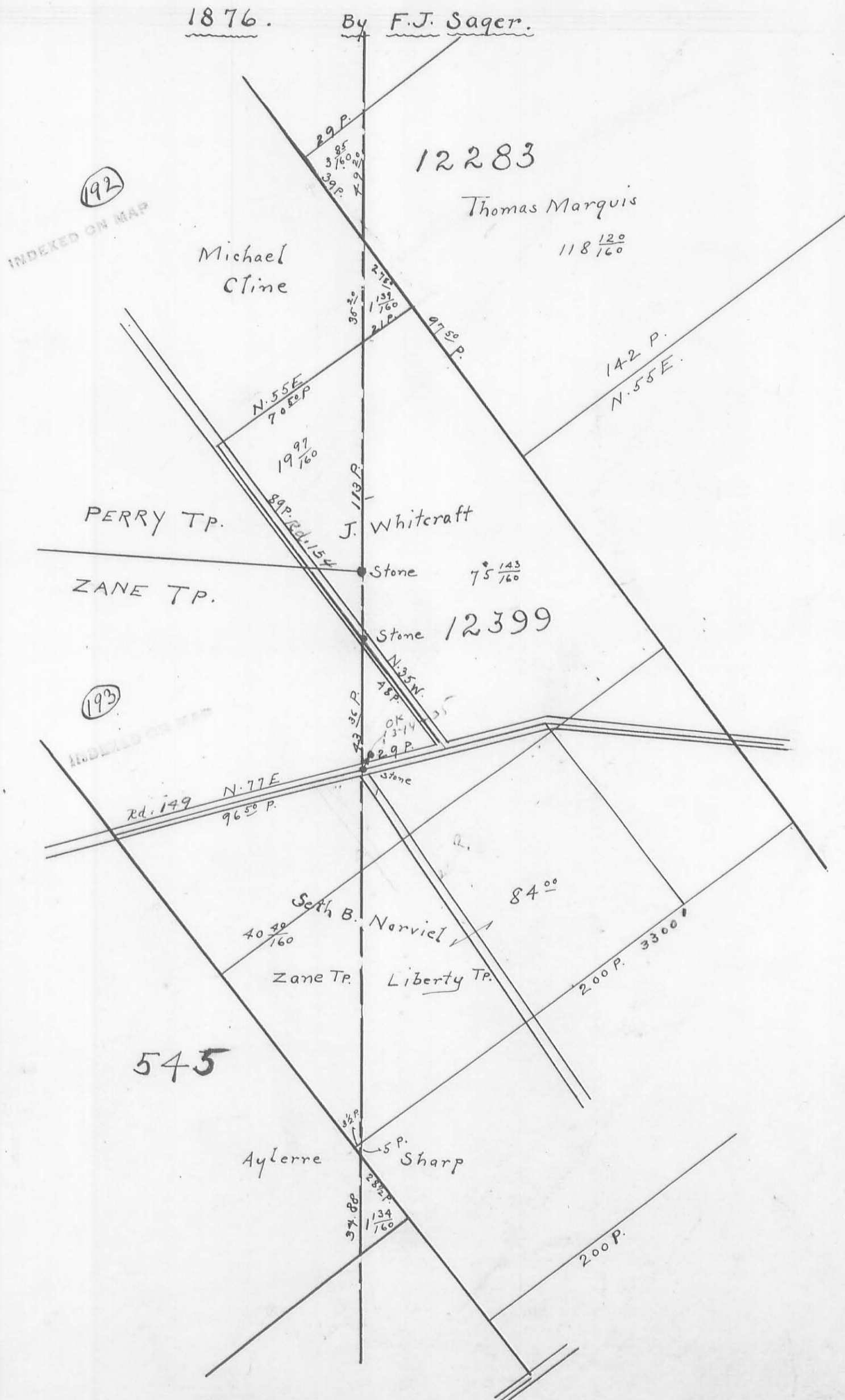


COUNTY LINE SURVEY

1876. By F.J. Sager.



43.86
1.25
45.11
1.25
46.36
1.25
47.61
1.25
48.86
1.25
50.11
1.25
51.36
1.25
52.61
1.25
53.86
1.25
55.11
1.25
56.36
1.25
57.61
1.25
58.86
1.25
60.11
1.25
61.36
1.25
62.61
1.25
63.86
1.25
65.11
1.25
66.36
1.25
67.61
1.25
68.86
1.25
70.11
1.25
71.36
1.25
72.61
1.25
73.86
1.25
75.11
1.25
76.36
1.25
77.61
1.25
78.86
1.25
80.11
1.25
81.36
1.25
82.61
1.25
83.86
1.25
85.11
1.25
86.36
1.25
87.61
1.25
88.86
1.25
90.11
1.25
91.36
1.25
92.61
1.25
93.86
1.25
95.11
1.25
96.36
1.25
97.61
1.25
98.86
1.25
100.11
1.25

97.50
34
4134.50
344

4177.50
8
17
10