

Survey for

Jain

Township

Page

Sheriff Lyon Co.

to

John Q. Green

Vol. 76 Page 335

Sec. T. R.

Date Mar, 15, 90

Surv. 4570

Thence

— Beg. at SE cor. Ebbeliza Christy's tract of land
S 90° E 11.74 chains to a cor. to M. Green, land.

— S 59° 4' W 40.73 chains to a cor. to Blackburn land

— N 22 1/2° W 10.56 chains to a stake at SW cor. to
Ebbeliza Christy's land.

— N 59 1/4° E 44.40 chains to peg containing 44 H 128 P.

Also right of way 20 feet over the lands of
Ebbeliza Christy from SE cor. of tract that
off to John Q. Green. to a county road.

INDEXED ON MAP
1058 10-1

Survey for

Jane

Township

Page

Sherriff Logan Co
to
Elizabeth Christy.

Vol.

75

Page

535

Sec.

T.

R.

Date

Mar-10-90

Surv.

4570

Thence

Begin at a stone SE cor. to B.F. Wyricks land.
N 41° W. 6.10 chains to O. County road.

- S 79° E 2.18 chains to a point on the bridge and 20 feet from the cor of the lands of H.H. Dixon J.B. Wyrick and Edward Outland

- S 40° E 12.87 chains to a stake

- S 59 1/4° W 44.45 chains to stake in Blackburn land

- N 23 1/2° W 8.09 chains to cor Blackburns land and ⁱⁿ ~~at~~ Wyricks line

- With Wyricks line N 59 1/4° E 44.52 chains to beg containing 37 A. 69 poles.

Subject to Right of way 20' wide from NE cor to John A. Greens land to county road.

INDEXED ON MAP

1050

102

Survey for

Janet

Township

Page

John B. Blackburn

to

John B. Blackburn

Vol. 45 Page 50

Sec. T. R.

Date Dec 6, 1867

Surv. 4570

Thence

Begin at a stone at N.W. cor. to M. Green's land
with Green's N 58 1/4 E 60 poles to a stone

N 27 1/4 W 73 P to a stone in Mercks S line

with Mercks line S 58 1/4 W 49 1/2 P to a stone

S 19 1/2 E 26 P to beg contain 25.90

INDEXED ON MAP
1058 103

Survey for _____

Township _____

Page _____

Vol. _____ Page _____

Sec. _____ T. _____ R. _____

Date _____

Surv. _____

to

Salih Green

Thence

R. F. Plotner, Surveyor

at M Marton

J. N. Devore

Johan Outland

Geo. R. Greens Mill near Milton Green
Vol a P 530 - 531

INDEXED ON MAP
1058 1D-4

Common Pleas Court Case No 3495 Book 20 P 332

B. F. Wirick.

N 59 1/2 E 44.52

Ebbeliza Christy 37A.64P.

N 59 1/2 E 44.45

John Q Green 44.80

N 59 1/2 E 40.37 ?

N 61 E 56.70

110 A. 1/4 Lane.

S 61 1/2 W 50.90 chs

Black Box 17

N 23 1/2 W 10.56
8.94

N 17 W 21.05 chs

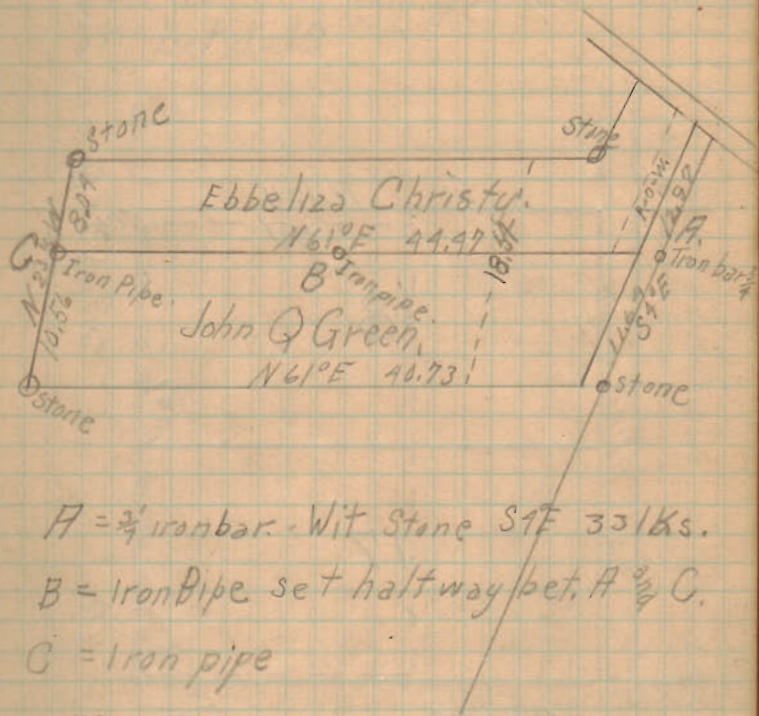


INDEXED ON MAP
1058 1P

Green - Christy Survey,
 Zane Tp. Survey 4570
 Flagman - Clarence Conover.
 Chainman - { Justis Wirick }
 { Abraham }

John Q Green says he set post
 at A for old fence but couldn't
 remember why he set it.

January 5th 10th 1910



A = $2\frac{1}{2}$ iron bar. Wit Stone SE 33/Ks.
 B = Iron Pipe set halfway bet. A & C.
 C = Iron pipe

1058