

S.H. 607 Monroe^{9th} zone Twp.
State Route 287

MacCree Pike

Free Turnpike Record No. 5 Page 479

60' From {Lodden To {George Smith Corner
 {Road No. 1 {Road No. 28

West Middleburg Pike

Free Turnpike Record No. 5 Page 393^{9th} 394

60' Page 394

50' Johnson Pike Road 28 To
Church Corner
Road Record 5 Page 452

← Old County Road No. 15 from
West Liberty To Union Chapel Church.

Union Chapel church To Middleburg
old Co. Road No. 41

↙ Middleburg To S.H. 235 old
County Road No. 119

(1467)
INDEXED ON MAP

S.H. 607

Stakes Placed 30' from E for 60' Road.
Numbered stakes Placed 2-4-6-8-10 etc.
Distances to Buildings for Map purposes
only, Not intended for actual distances
to hold E. Measurements placed as
shown turned 90° with transit and
measured accurate,

1467
INDEXED ON MAP.

Monument 1700 (All monuments
both sides unless noted)
30' from E

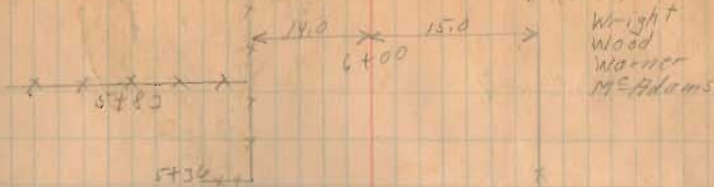
See Plan L-25 for S.H. 607

See Plan L-14 for S.H. 595
S. 15-22 E.

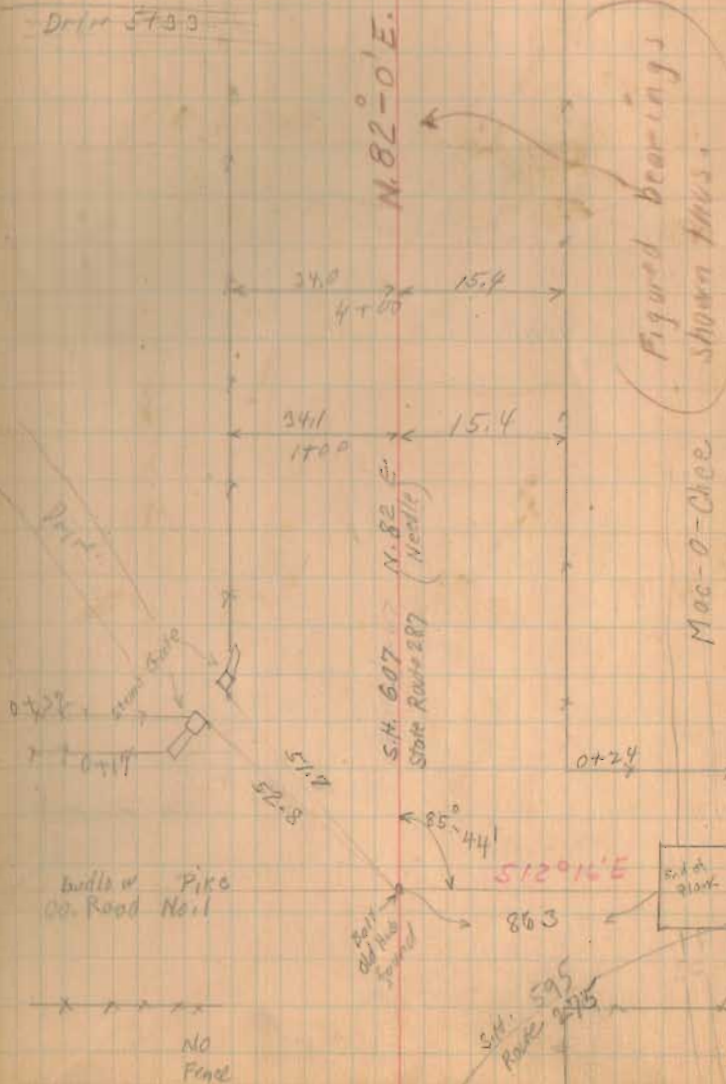
N 75-11 E
D 89-27
(Plan L-14)

Dec. 11-1931
Rainy

13



Drill 5733



S.H. 607

22+00 Mon.

17+00 Mon.

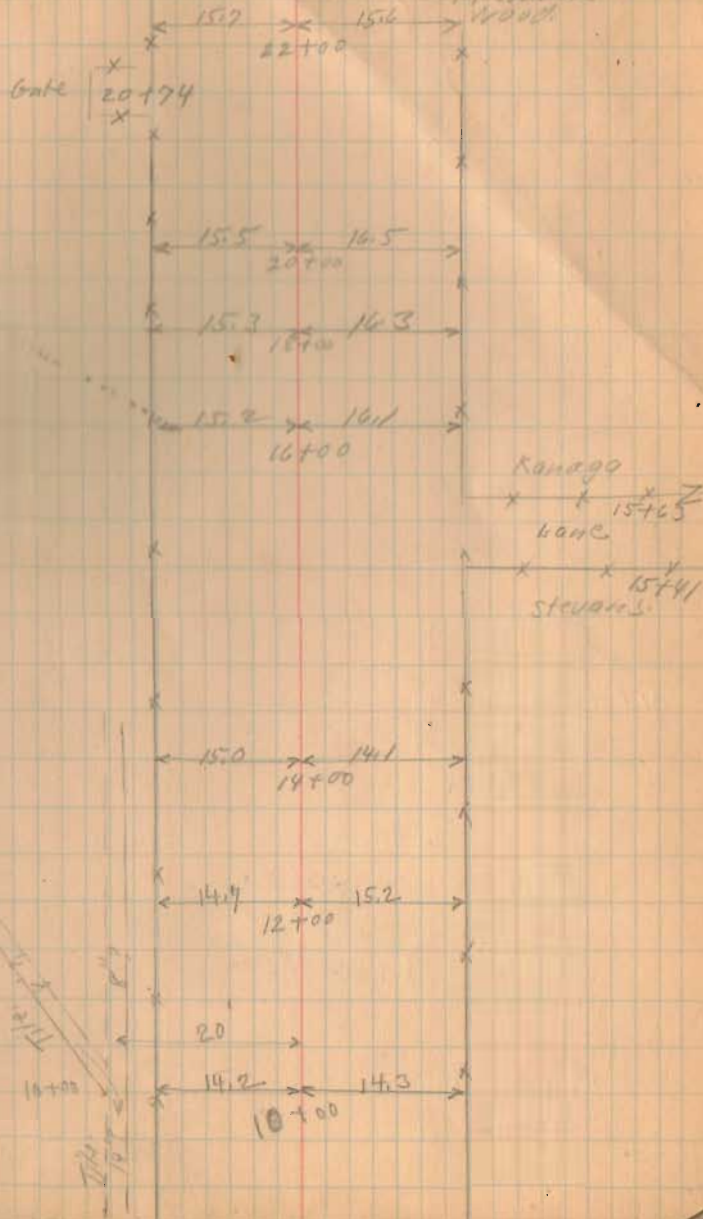
12+00 Mon.

7+00 Movement

1467
INDEXED ON MAP

DEC-12-1931
Clear - (Fog AM)
Wright
McKinnon
Warr
McAdams
Wood

14



S.H. 609

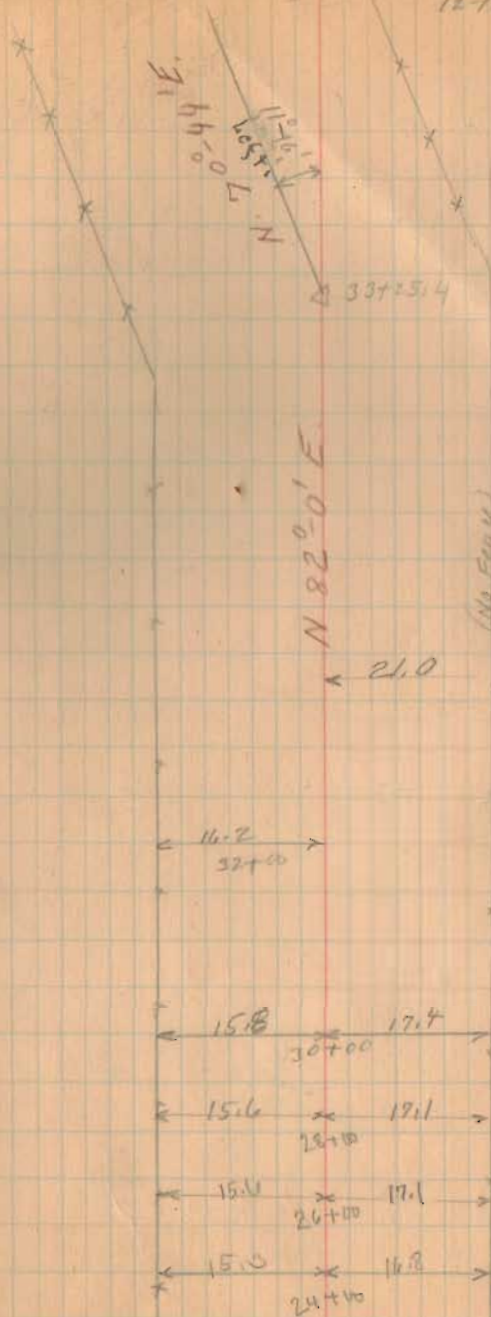
31+00 Mon.

1867
INDEXED ON MAP

27+00 Mon.

12-12-51

15



Δ 11°-16' left.
 P.L. 33+25.4
 R. - 954.93
 D - 6°
 T. - 94.19
 E. - 4.63
 L. - 187.79 (Hrc.)
 P.C. - 32+31.21
 P.T. 34+19



ETWIN

No. Fence

(Lane)

Heater

31+92
Kanaga

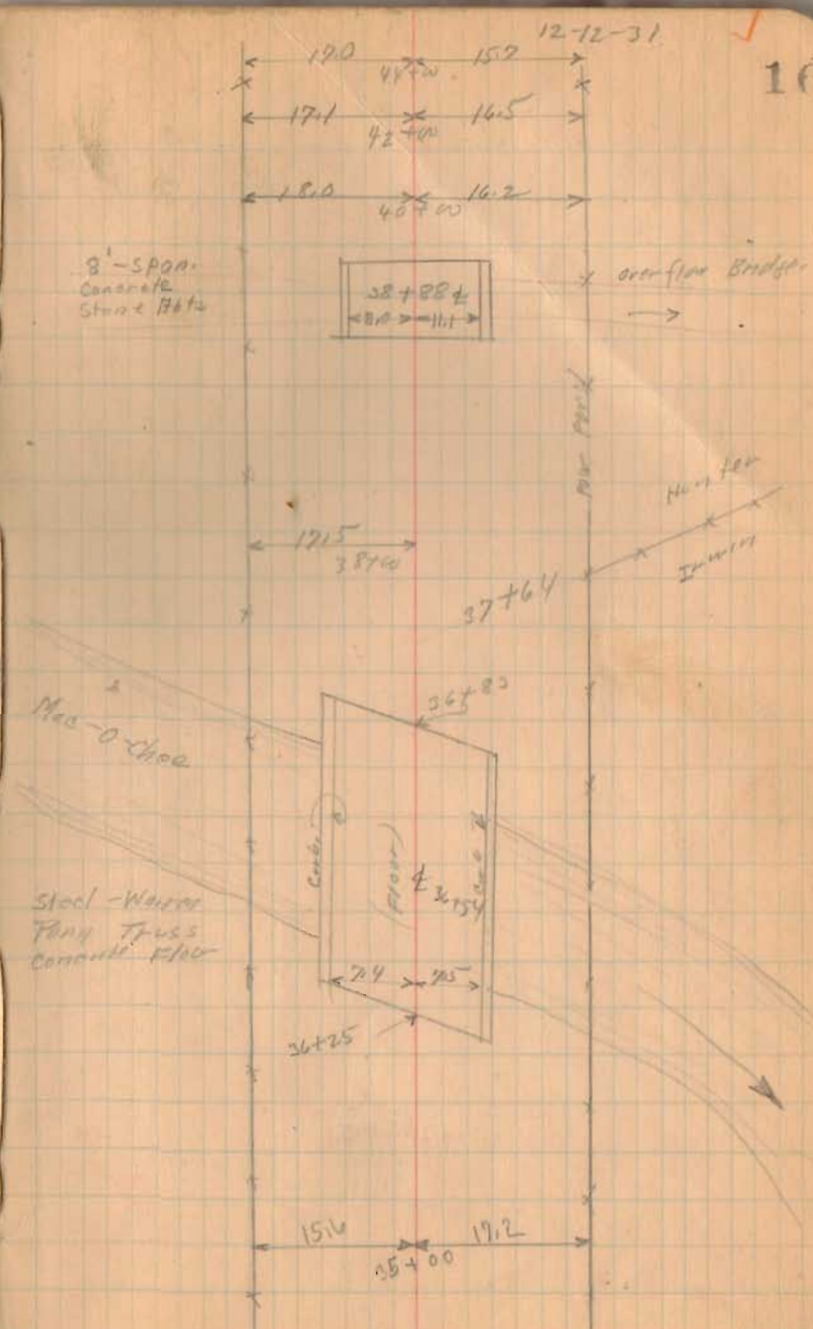
S.H. 607
45+00 Mon.

40+00 Mon.

1467
INDEXED ON MAP

35+00 Mon.

16



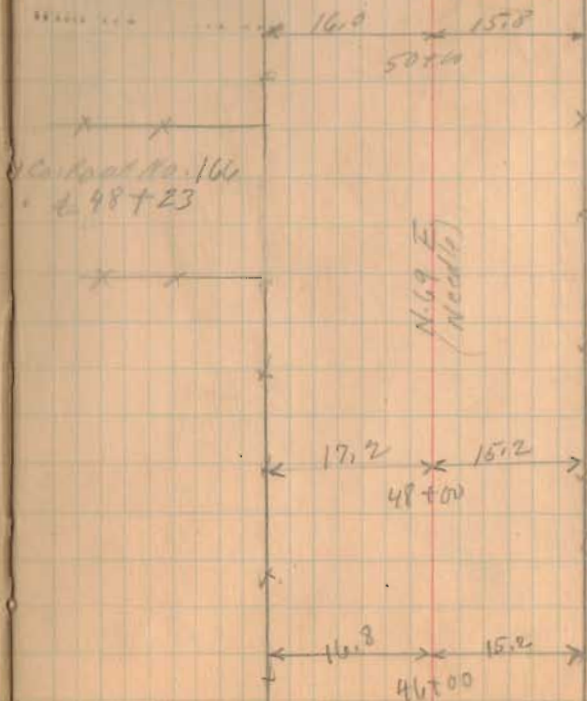
S.H. 607

50+00 Mon

1467
INDEXED ON MAP

DR # 14-1931
Windy Cloudy
Winged
MSPK
Winged
Winged
MSPK
17
8-21' LAY.
53+46 (No Curve)
Started.

Stuck in
52+12
Co. Road No 166
E 52+12



S.H. 607

65+00 Mon

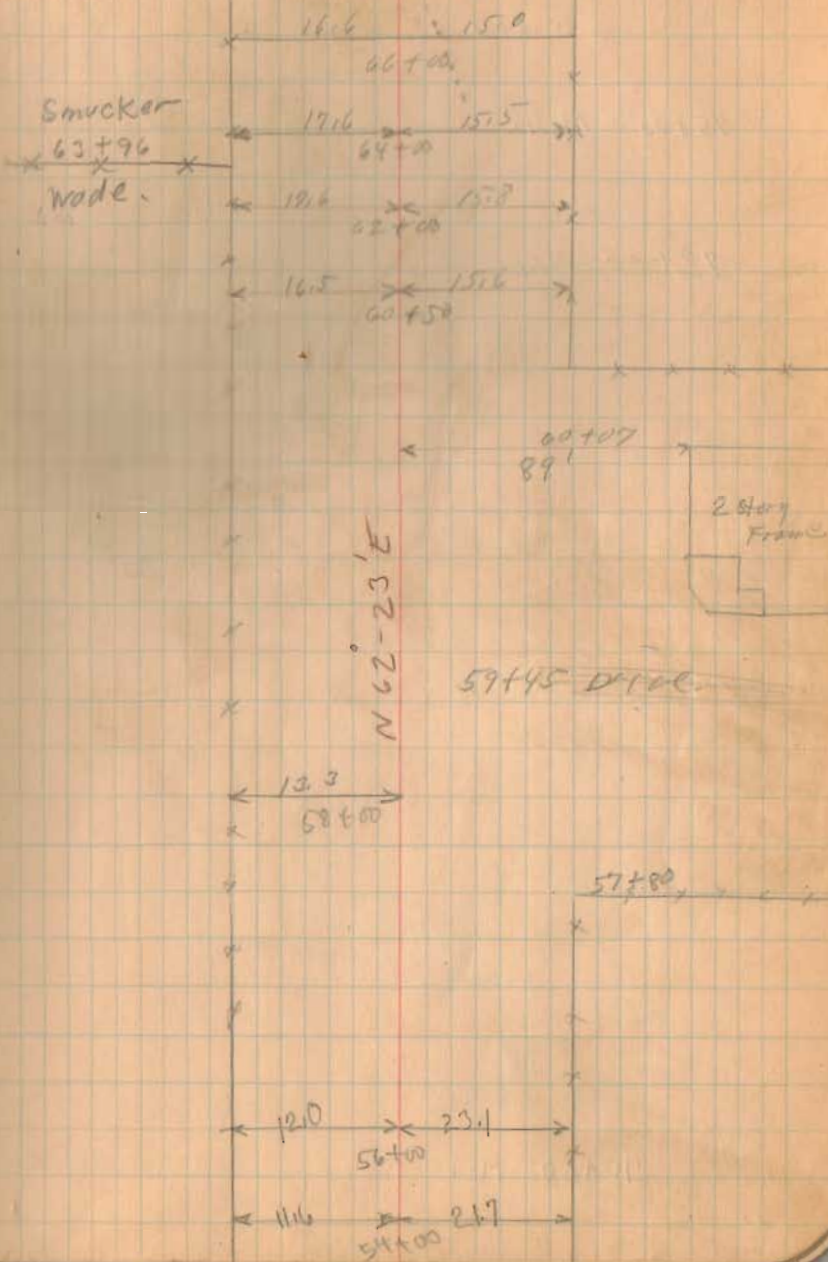
60+50 Mon

1467
INDEXED ON MAP

56+00 Mon

12-14-31

18



C.H. 400

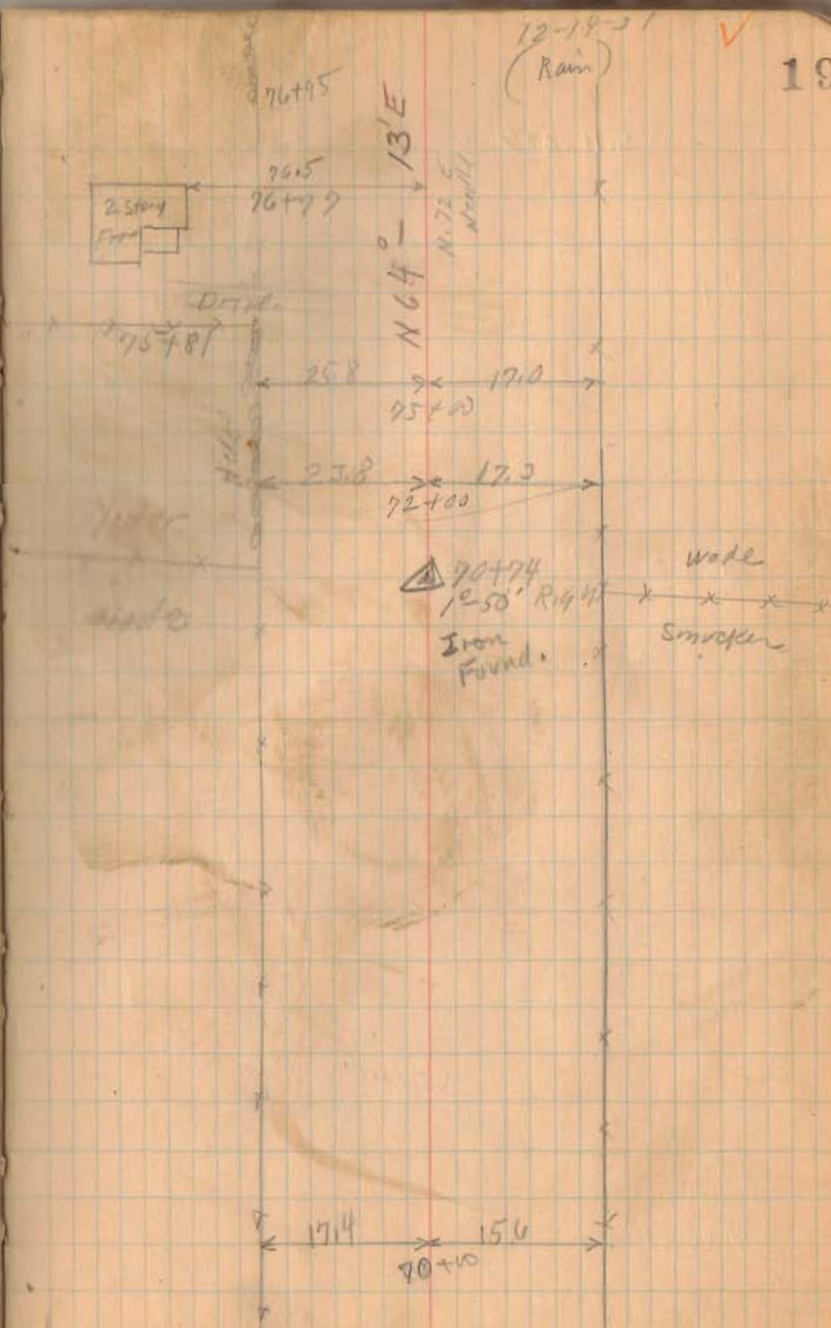
75+00 Mon.

72+00 Mon.

6467
INDEXED ON MAP

70+00 Mon.

19



5.11.617

90+00 Mon.

85+00 Mon.

INDEXED ON MAP

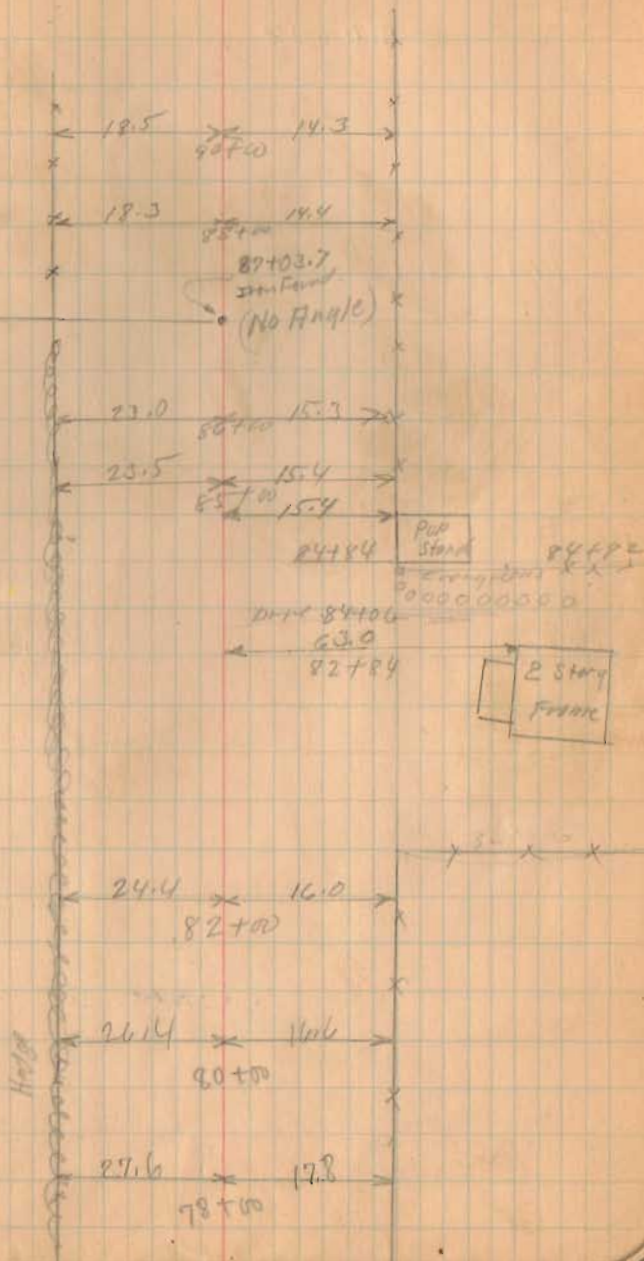
80+00 Mon.

12-11-31

20

Davis

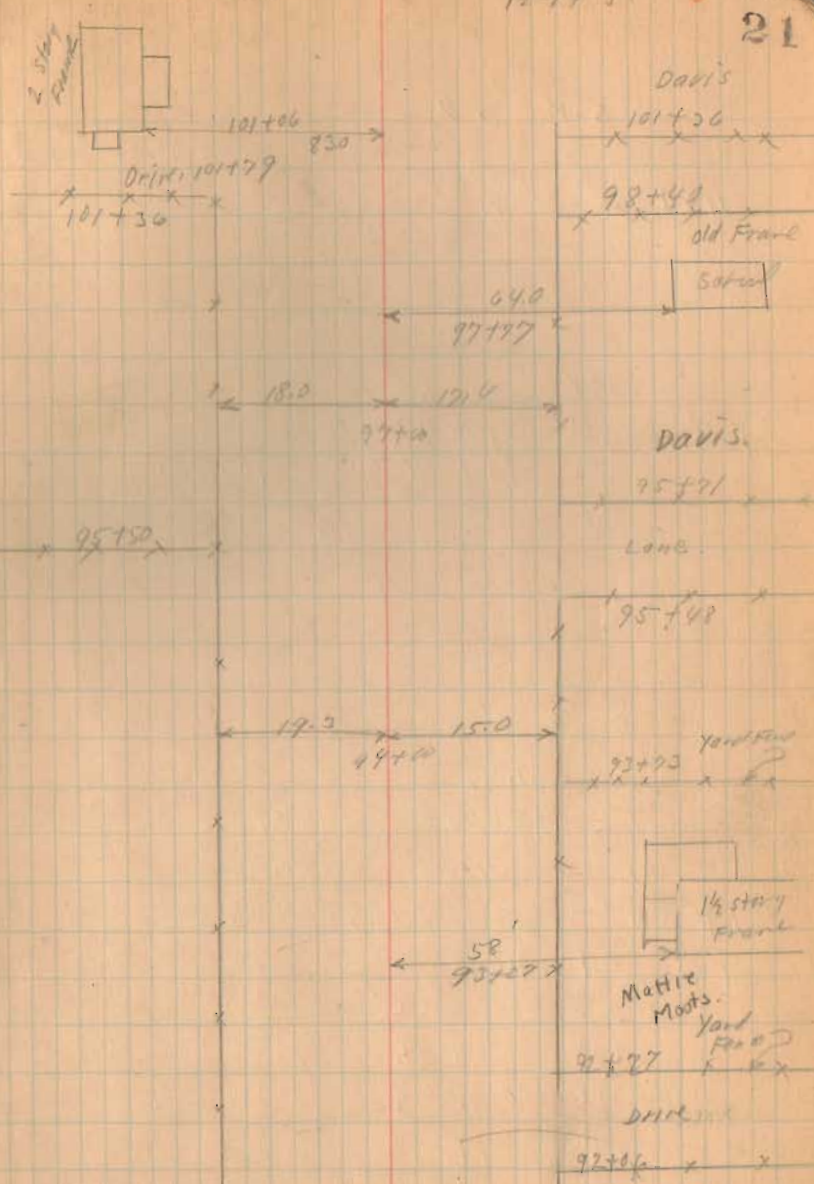
Yoder



S. H. 607

97+00 Mon.

1467
INDEXED ON MAP



S.H. 607

113+00 Mon.

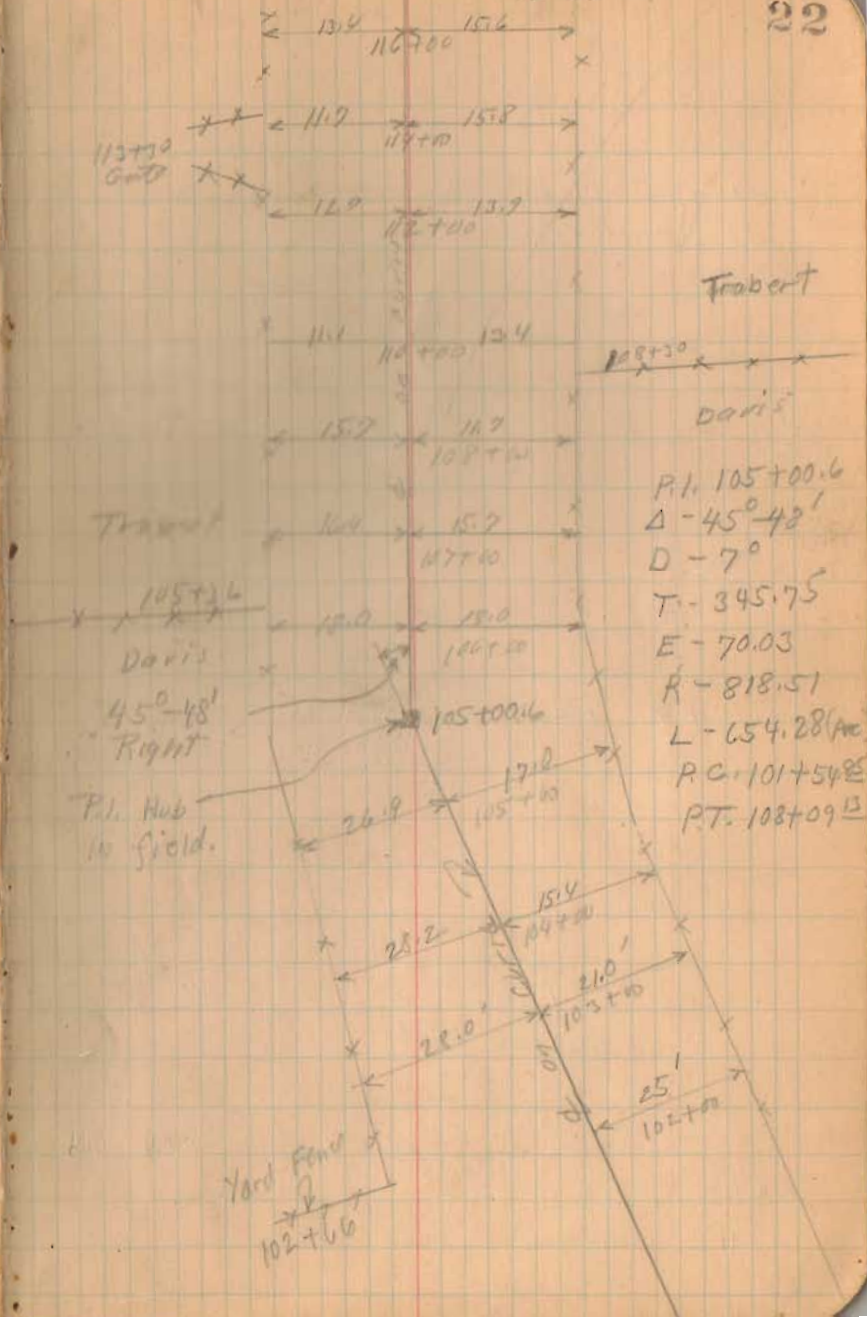
108+09¹³ (P.T.) Mon.

101+54²⁵ (P.C.) Mon.

1467
INDEXED ON MAP

12-14-31

22



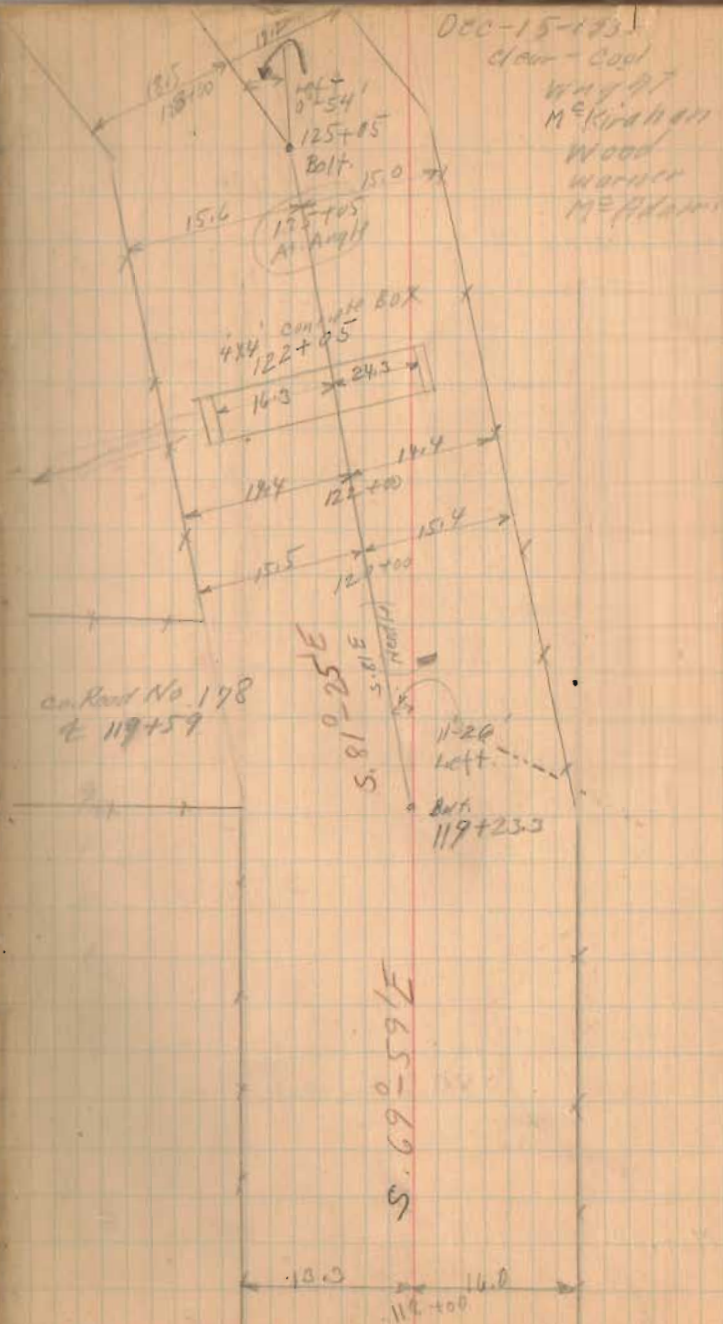
S.H. 607

125+05 Mon.
(90° from Back side)

120+00 Mon.

1467
INDEXED ON MAP

118 Mon.



S.H. 607

145+00 Mon.

140+00 Mon.

134+00 Mon.

1467

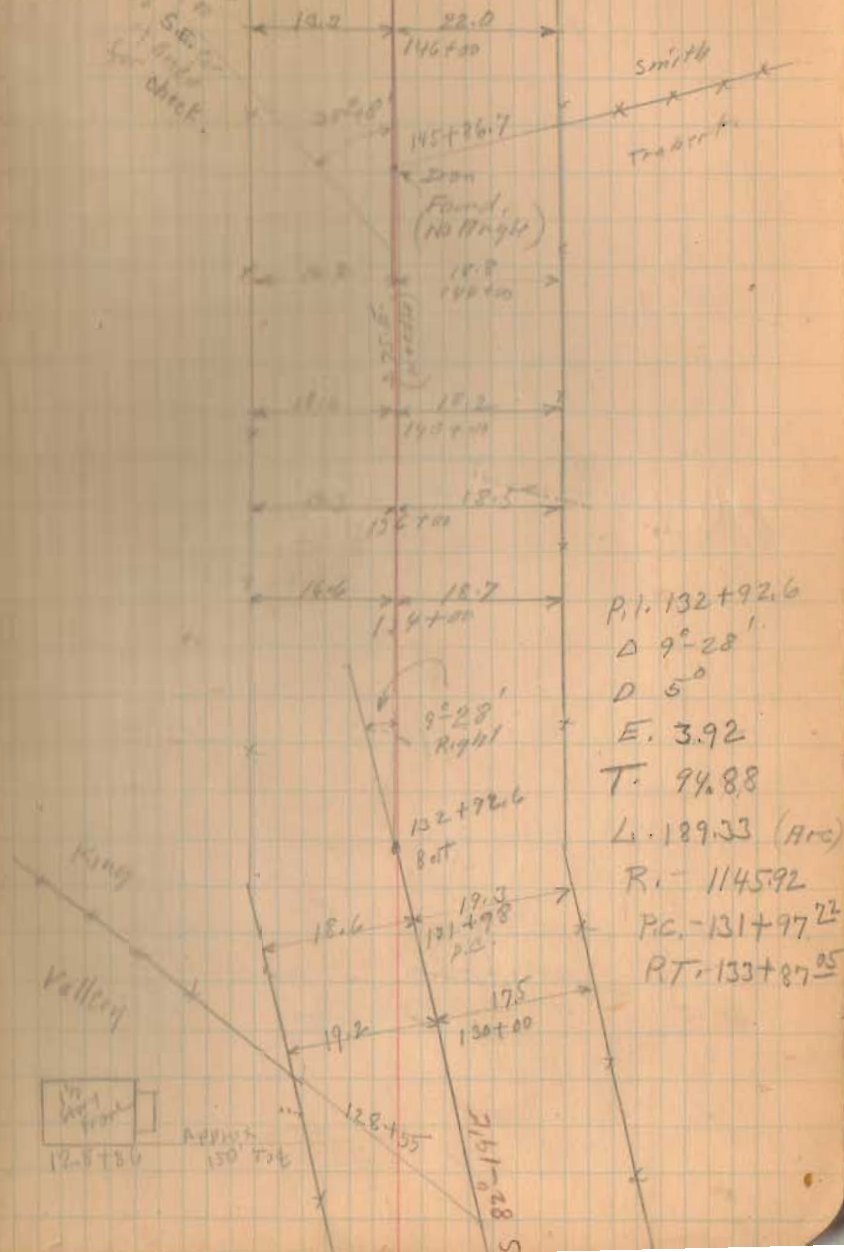
INDEXED ON MAP

131+00 Mon. 131+00 Mon.

12-15-51

24

Angle Noded
140+00
To S.H. 607
+ Grid
for check.



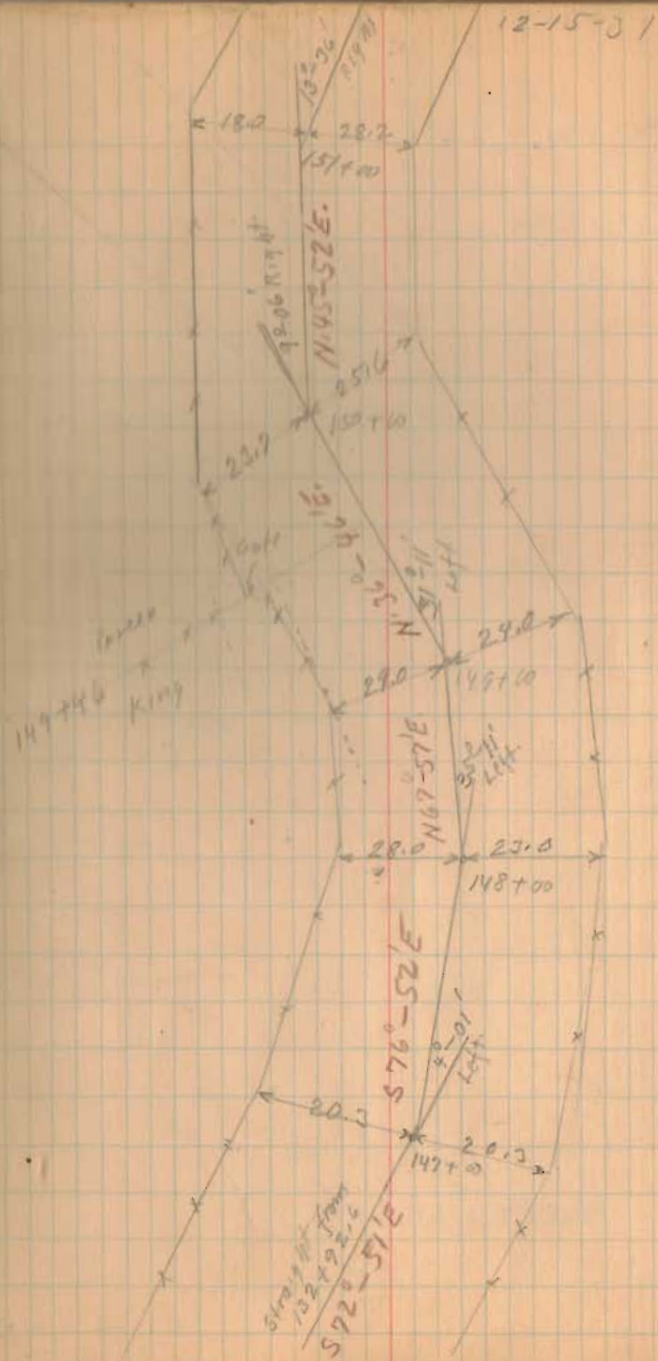
S.H. 607

Note:-

(Snake Bend Run as shown.
E of Road taken and angle
Noted. No monuments from
145+00 To 154+00)

1467

INDEXED ON MAP

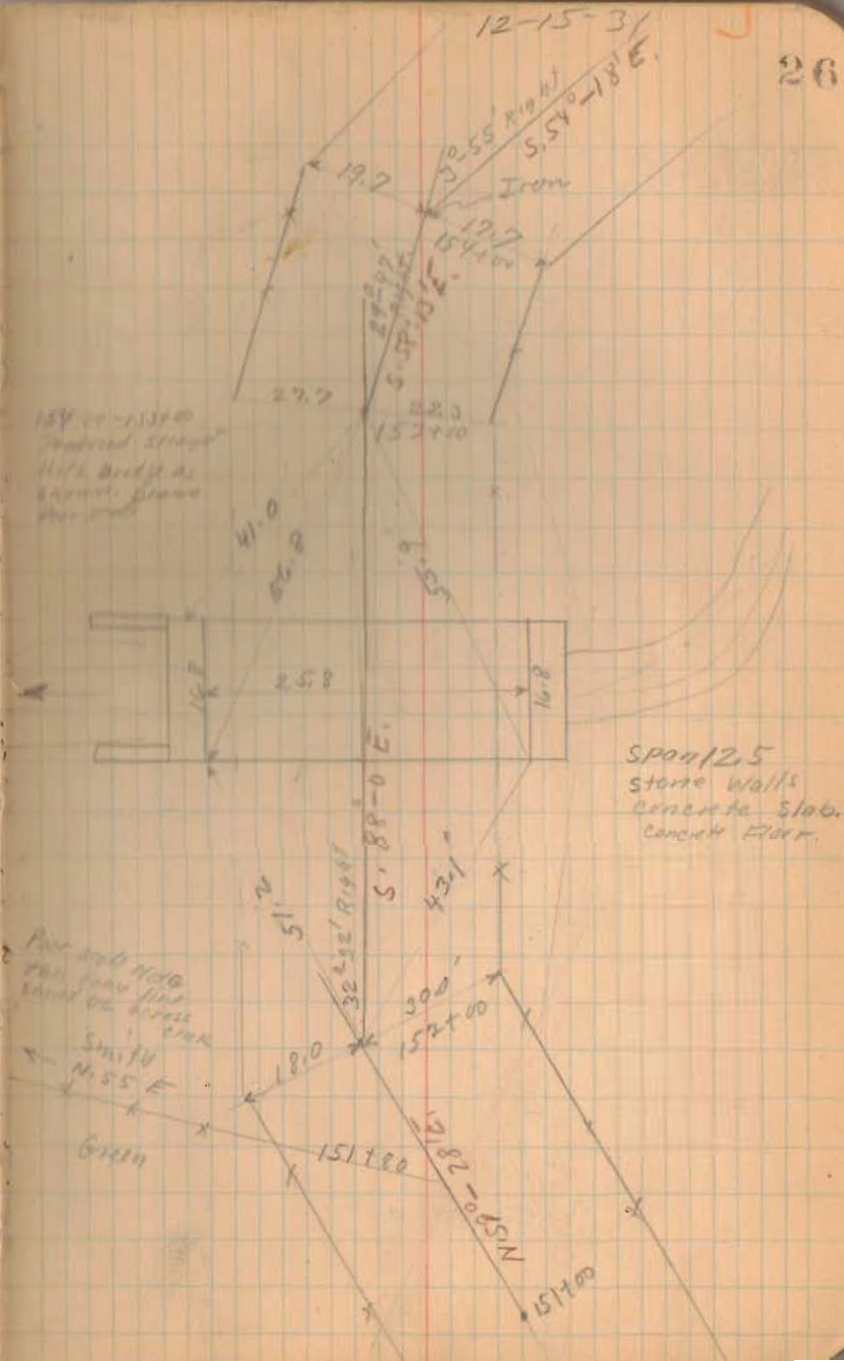


S. H. 607

154+00 Man.
(90° from Fore sight.)

(1467)
INDEXED ON MAP

26

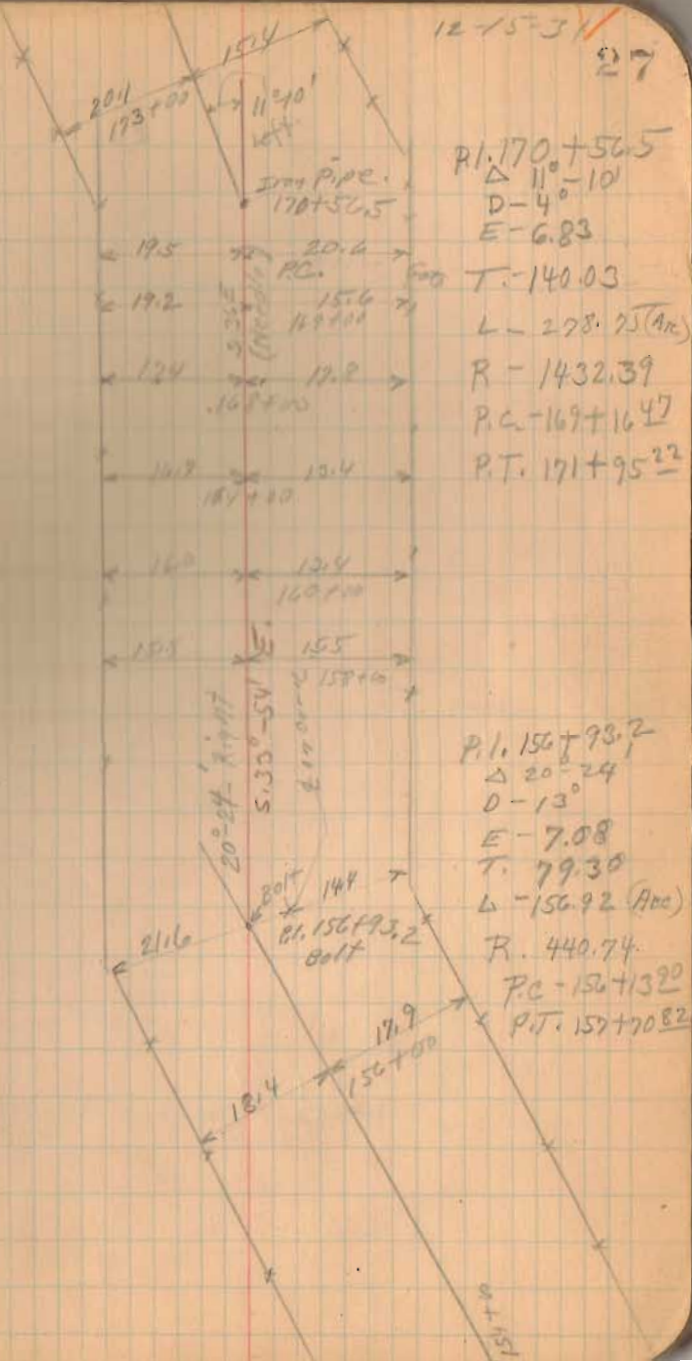


173+00 Mon. S.H. 607
 169+00 Mon.
 166+00 Mon.

161+00 Mon.

158+00 Mon.

(1467)
 INDEXED ON MAP



S.H. 607

211+00 Mon

210+00 Mon

206+00 Mon

202+00 Mon

197+00 Mon

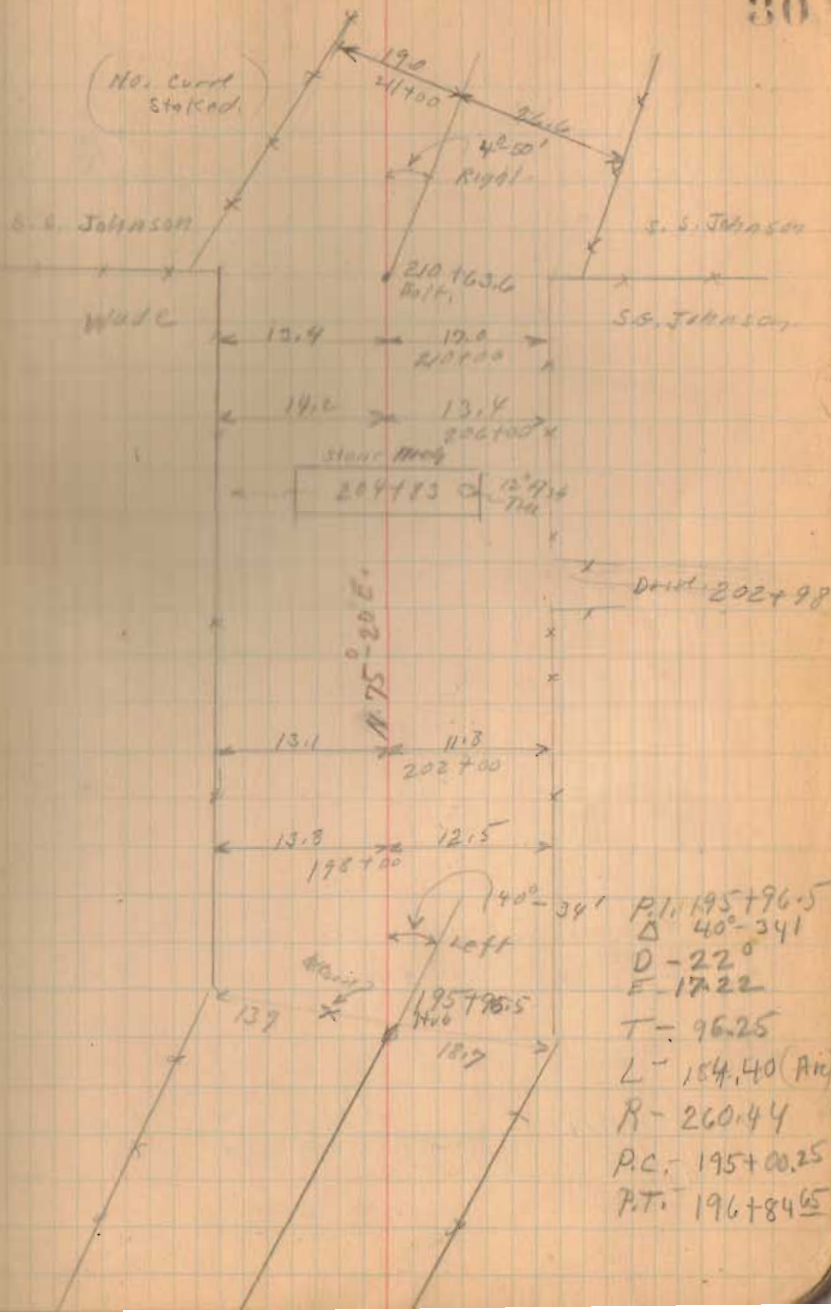
194+00 Mon

1467

INDEXED ON MAP

12-14-31

30



S.H. 607

245+00 Mon.

240+00 Mon.

234+00 Mon.

229+00 Mon.

1467
INDEXED ON MAP

Dec-17-1931

Clear

32

P.L. 243+56.5

$\Delta - 30^{\circ} 36'$

T = 104.50

E = 14.04

L = 204.00 (Arc)

D = 15°

R = 381.97

P.C. 242+52

P.T. 244+90

Thompson

Thompson

Thompson

Thompson

Thompson

Thompson

Thompson

Thompson

Thompson

Thompson

Thompson

Thompson

Thompson

Thompson

Thompson

Thompson

Thompson

Thompson

Thompson

Thompson

Thompson

Thompson

Thompson

Thompson

Thompson

Thompson

Thompson

Thompson

Thompson

Thompson

Thompson

Thompson

Thompson

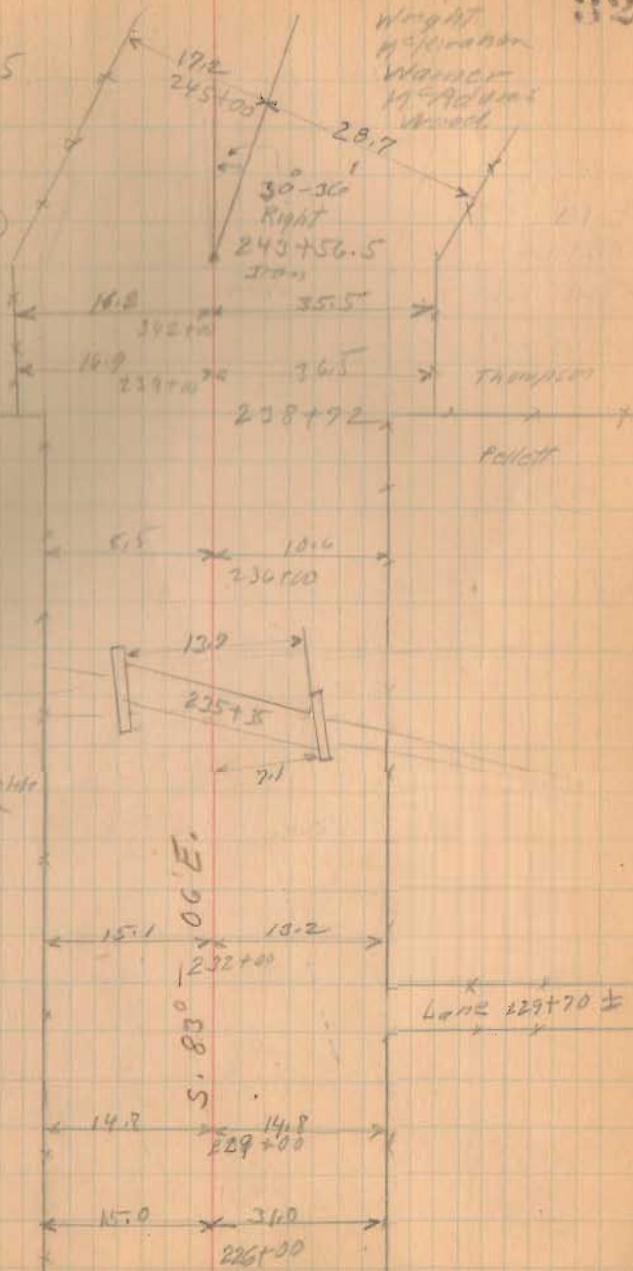
Thompson

Thompson

Thompson

Thompson

Thompson



Stone Hbl.
Found with
concrete. Concrete
Slab 13' x 20'
on 2" steel

Line 229+70 ±

S.H. 607

256+00 Mon.

254+50 Mon.

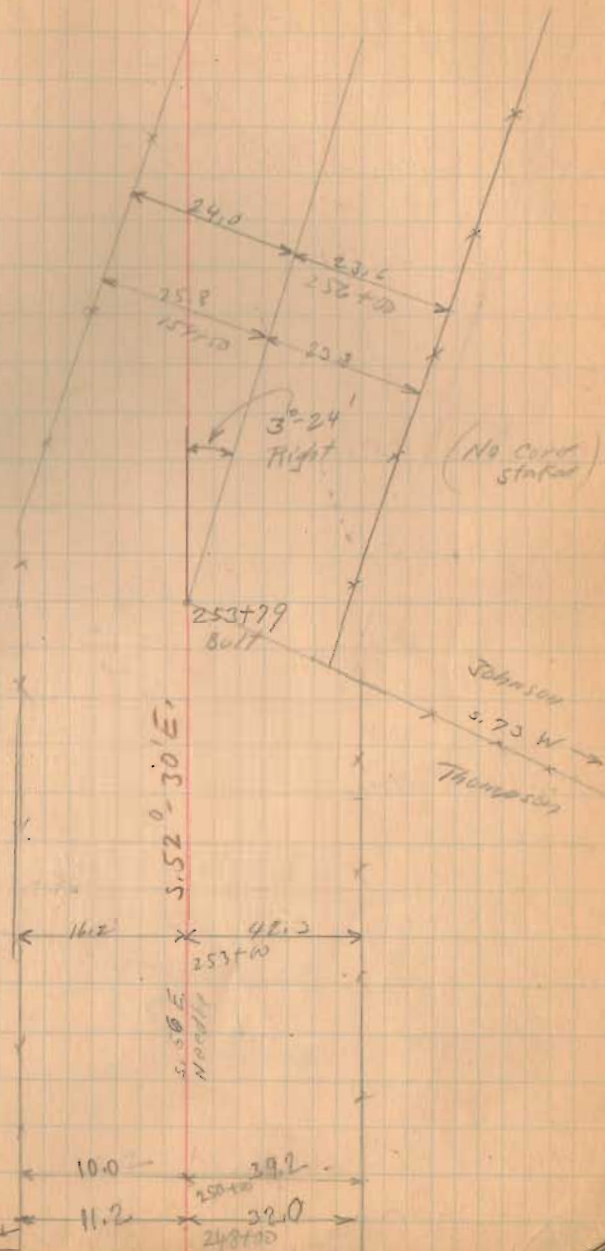
253+00 Mon.

1467
INDEXED ON MAP

250+00 Mon.

12-17-31

33



Out 246+95

S.H. 607

291700 Mon

286700 Mon

281700 Mon

276700 Mon

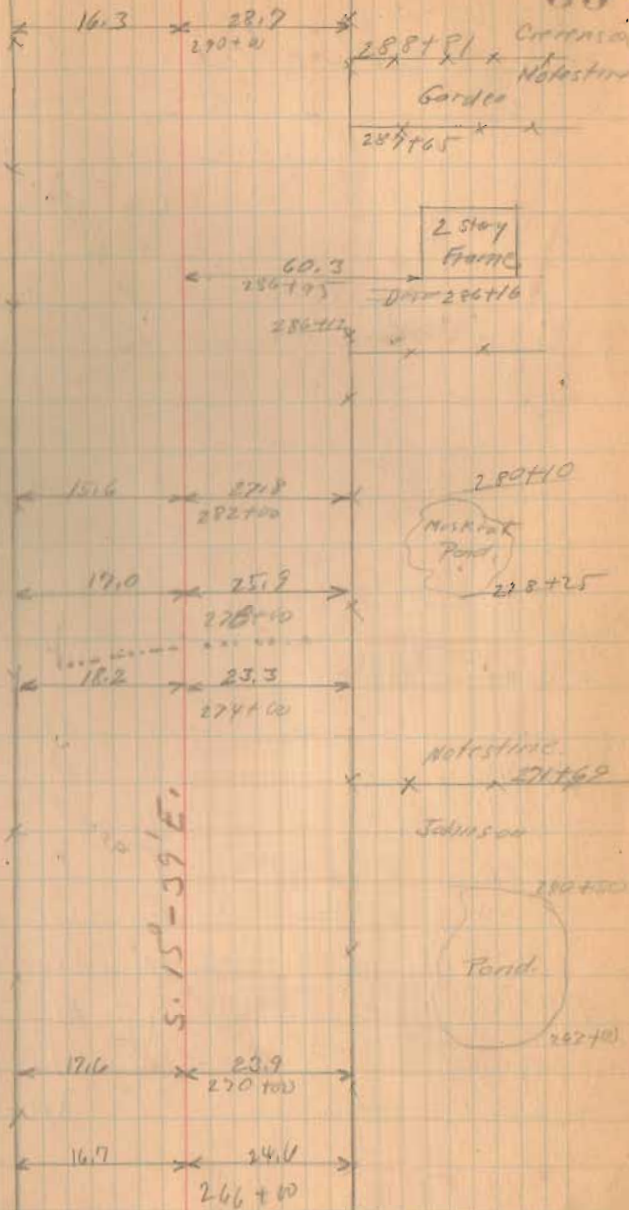
271700 Mon

267700 Mon

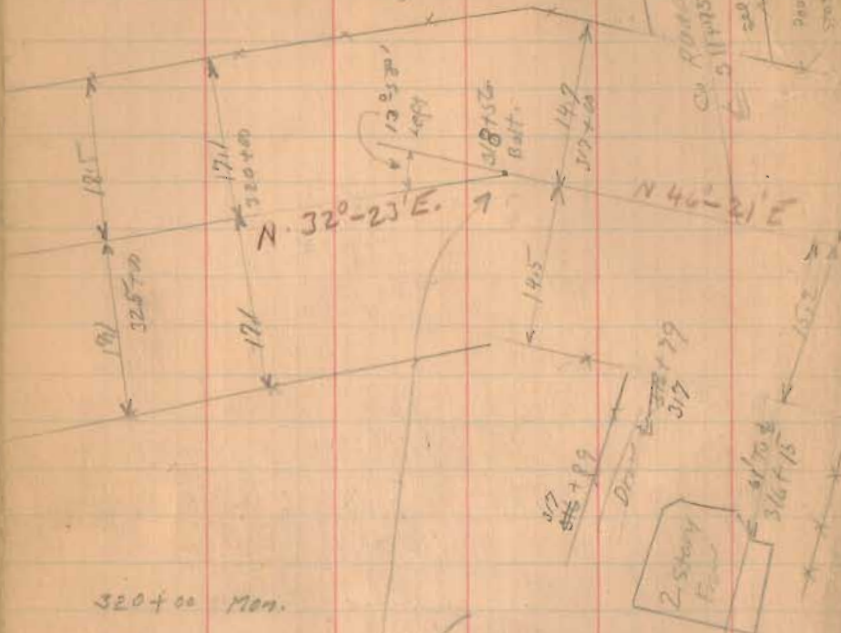
1467
INDEXED ON MAP

12-17-31

35



S.H. 607



- 320+00 Mon.
- 317+00 Mon.
- 313+00 Mon.
- 309+00 Mon.
- 302+00 Mon.
- 296+00 Mon.

P.I. 318+56
 Δ $109^{\circ}58'$
 $D = 7^{\circ}$
 $T = 100.03$
 $E = 6.10$
 $L = 199.52$ (Hic)
 $R = 818.51$
 P.C. 317+55⁹⁷
 P.T. 319+55⁴⁹

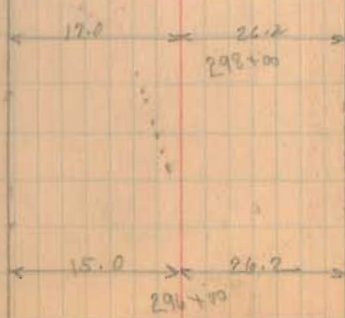
(1467)
INDEXED ON MAP

Dec-18-1931 ✓
36



Zone Twp.
Monroe Twp.

Union Church
 N. E. Corner
 298+57
 Circumference



S.H. 607

345+00 Mon.

342+00 Mon.

339+00 Mon.

334+00 Mon.

333+00 Mon.

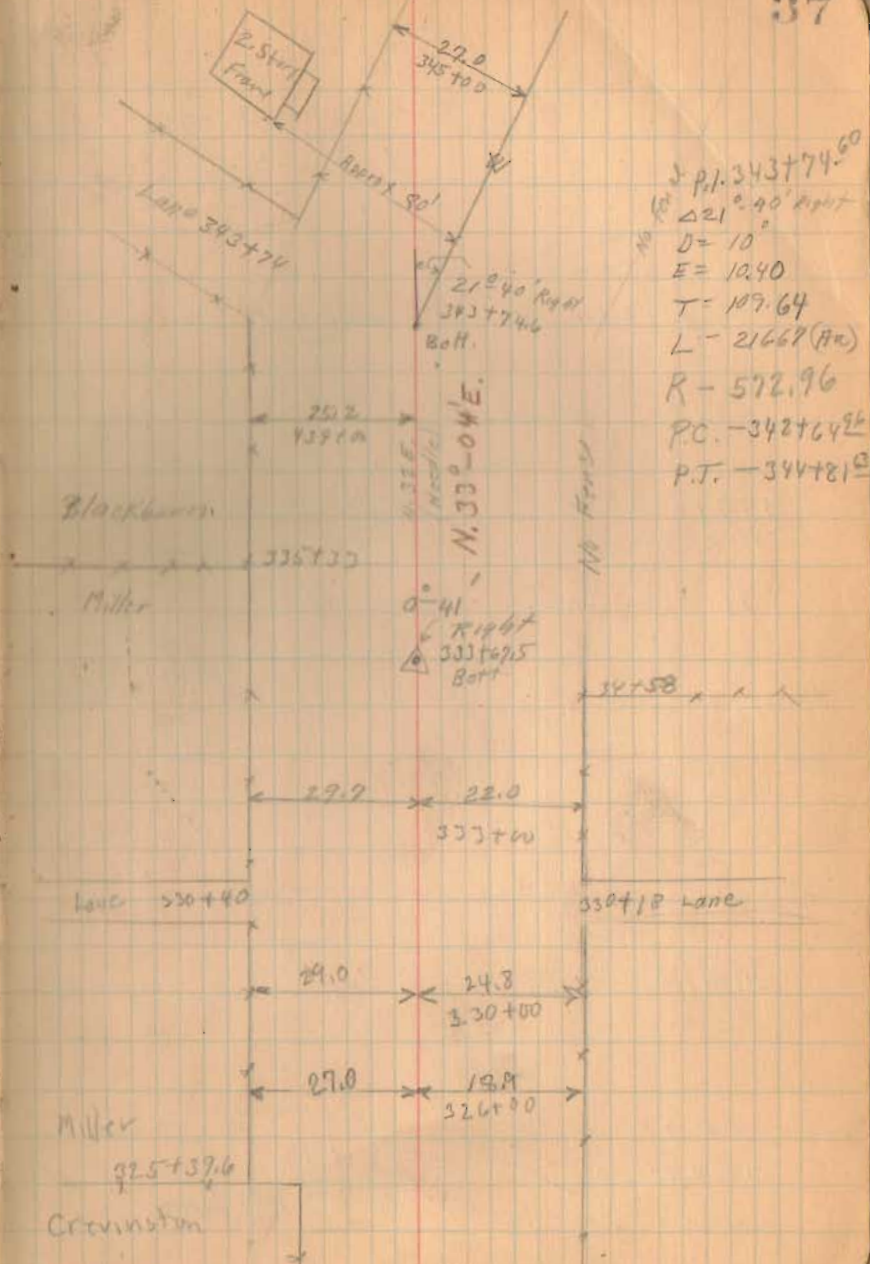
330+00 Mon.

225+00 Mon.

1867
INDEXED ON MAP

12-18-31

37



S.H. 609

407+00 Man.

402+00 Man.

397+00 Man.

391+82.8 Man. ($\frac{1}{2}$ of Angle)
P.L. line.

387+00 Man.

382+00 Man.

INDEXED ON MAP
1467

378+42.3 (90° from backsight)

374+00 Man.

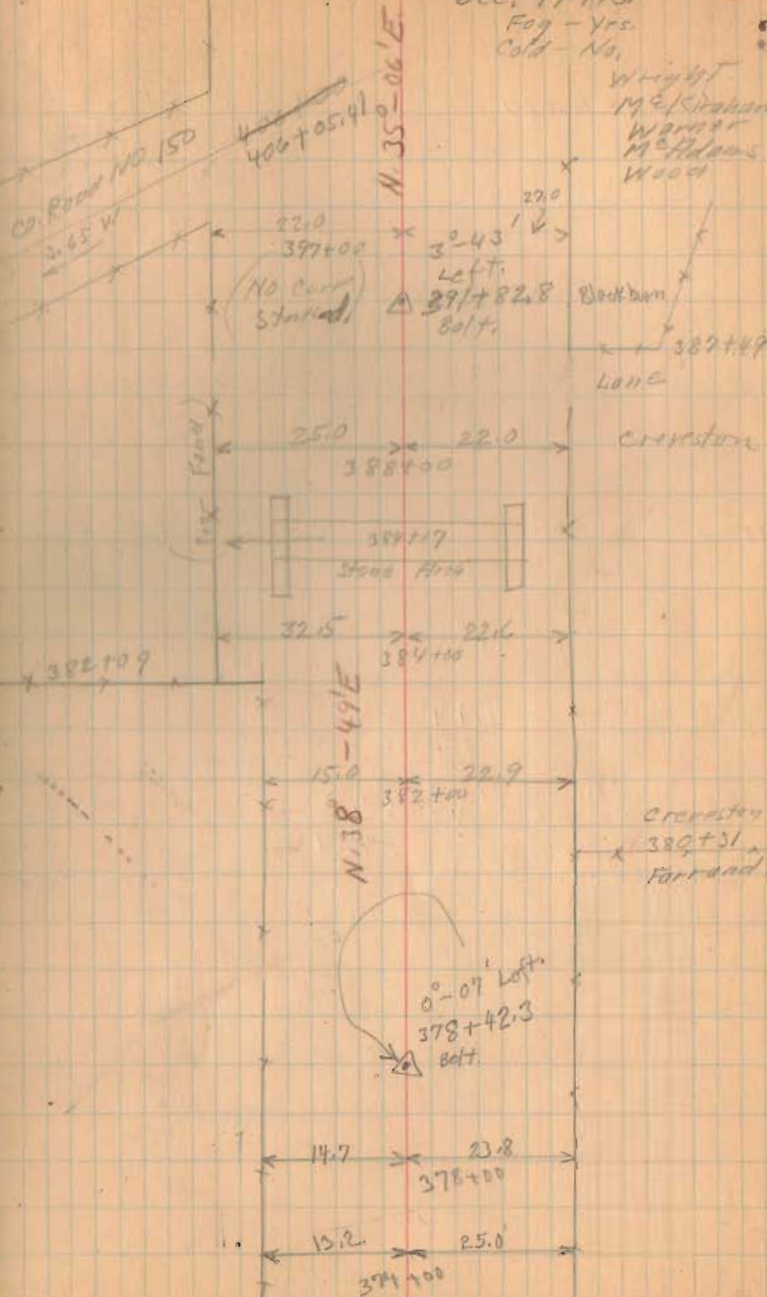
Dec. 19-1931

Fog - Yrs.

Cold - No.

39

Wright
McGowan
Warner
McAdams
Wood



S.H. 607

422+00 Mon.

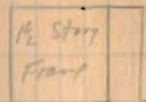
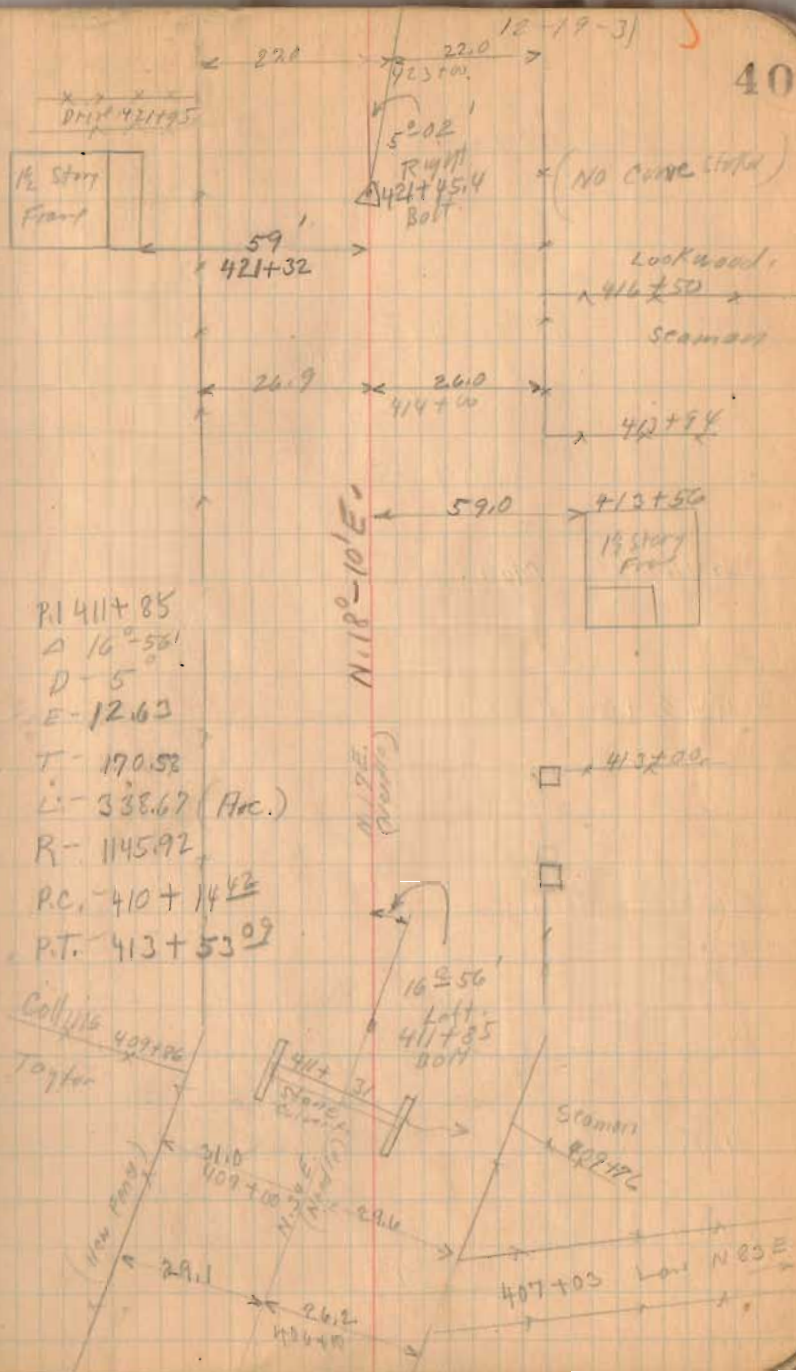
423+00 Mon.

421+00 Mon.

415+00 Mon.

1467
INDEXED ON MAP

40



(NO CURVE STATE)

Lookwood
416+50
Stamers

402+54



413+00

- R1 411+85
- Δ 16° 56'
- D - 5
- E - 12.63
- T - 170.52
- L - 338.67 (Arc.)
- R - 1145.92
- P.C. 410+14.42
- P.T. 413+53.09

Collins Taylor



Stamers
409+06

407+03 L. N 83 E

S.H. 607

446+50 Mon.

443+00 Mon.

438+00 Mon.

434+00 Mon.

432+00 Mon.

1467
INDEXED ON MAP

Dec. 21-1931

Cloudy - Some
Cold - No.

41

P.L. 444+93

Δ - 43° 20'

D - 22°

E - 19.80

T - 103.46

L - 196.87 (710)

R - 260.44

P.C. 443+89.54

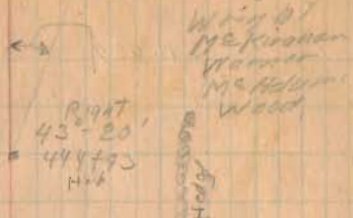
P.T. 445+86.51

Vassar

444+35

Devitt

442+32



Blockburn

(S.R. No. 559)

Co. Road No. 157

442+37

(See Book 590 Page 39)

Collins

N. 14° - 42' E.

22.6
438+00

19.5

P.L. 436+02

Δ - 8° 30'

D - 3°

T - 144.92

E - 5.27

L - 283.33 (A70)

R - 1909.86

P.C. 434+60.08

P.T. 437+43.41

Collins

Devitt
431+58

Collins

20.6
434+00

437+02
Bolt

21.4

65.4
435+02

27.6
428+00

21.2

N. 23° - 12' E.

Lockwood 729+22

1/2 acre

432+00

432+50

S.M. 609

476+00 Mon.

473+00 Mon.

466+00 Mon.

460+00 Mon.

456+00 Mon.

451+00 Mon.

1467
INDEXED ON MAP

42

P.L. 774+325
D 12° 36'
D-C
T- 105.42
E- 5.80
L- 210.00 (Ave)
R- 954.93
P.C. 473+27.08
P.T. 475+37.08

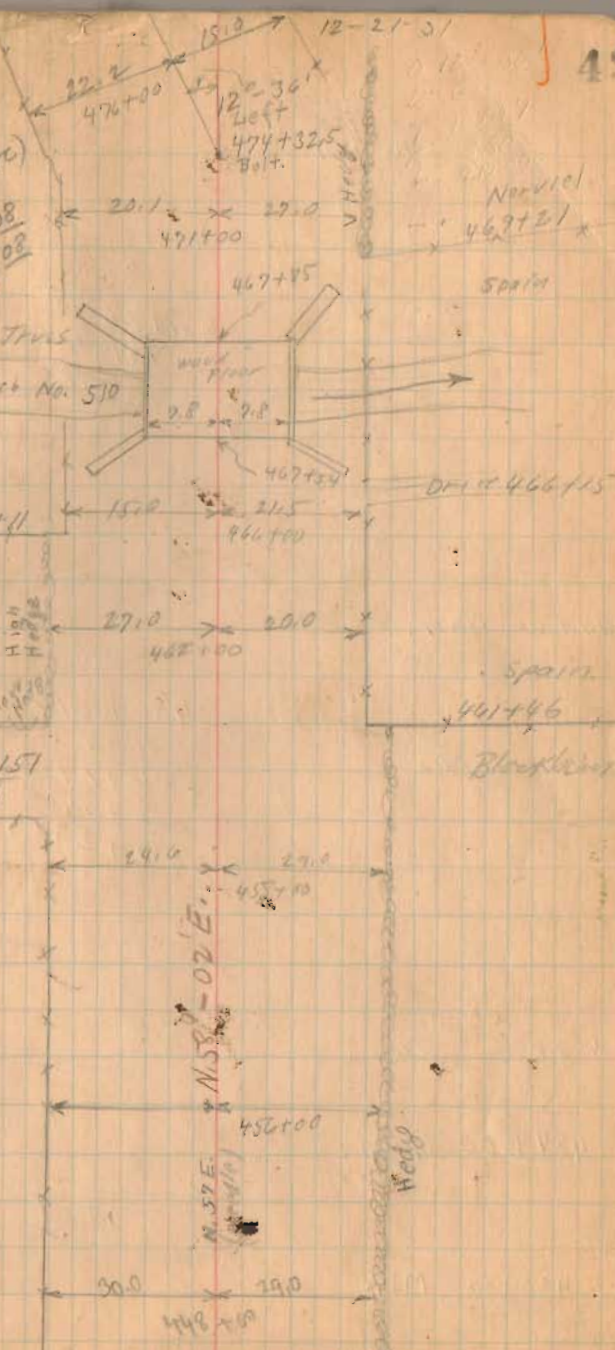
Pony Macra Truss

Buller Ditch No. 510

Gibson

Vassar

High
Road
No. 157
E 461+15



S.H. 607

499+00 Mon.

472+00 Mon

488+00 Mon

484+00 Mon

480+00 Mon

1467
INDEXED ON MAP

12-21-31

43

P.I. 498+54
 Δ - 29° 52'
 D - 20'
 E - 10.06
 T - 76.58
 L - 149.67 (Arc)
 R - 286.48
 P.C. 497+77.42
 P.T. 499+27.09

Dosny

Gibson

498+10

N. 25° - 16' E.

292.50'
Left.
498+54
Balt.

E 498+00
Co. Road No 158
5.5' E.

N. 55° - 12' E.

924'
Right

486+01.7
Balt.

P.I. 486+01.7
 Δ - 9° 46'
 D - 4'
 E - 5.22
 T - 122.38
 L - 244.17 (Arc)
 R - 1432.39
 P.C. 484+79.22
 P.T. 487+23.12

N. 45° - 26' E.

481+24

2 1/2 mi
Fishing

480+52
Approx 100

482+56
Dmrc

Very Poor Flood

17.1

490+80

499+10

S.H. 607

511+00 Man.

508+00 Man.

504+00 Man.

500+00 Man.

1467
INDEXED ON MAP

PI. 512+72.7
Δ - 28° 16'
D - 15'
E - 11.92
T - 96.18
L - 188.44 (Arc.)
R - 381.97
PC 511+97.52
PI. 513+85.96

Dec-22-1931

Rain A.M.

Wright

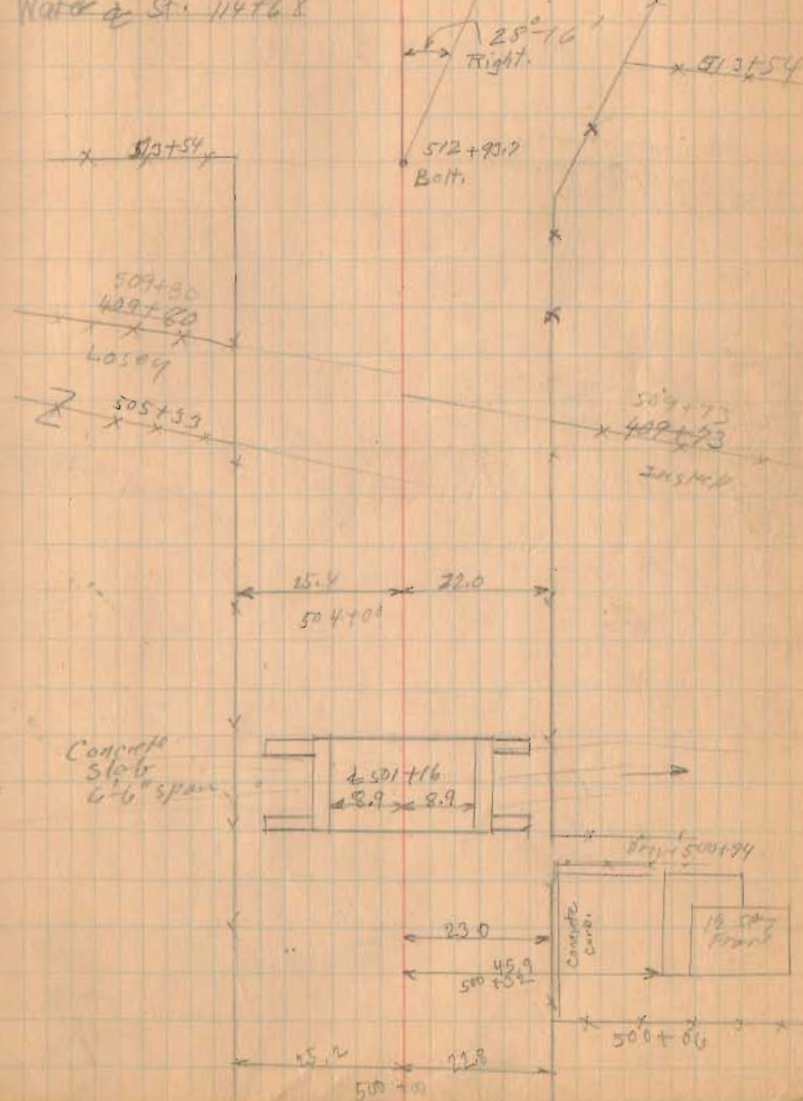
M. Expiration

Warren

M. Phillips

Wood.

Water of St. 114+68



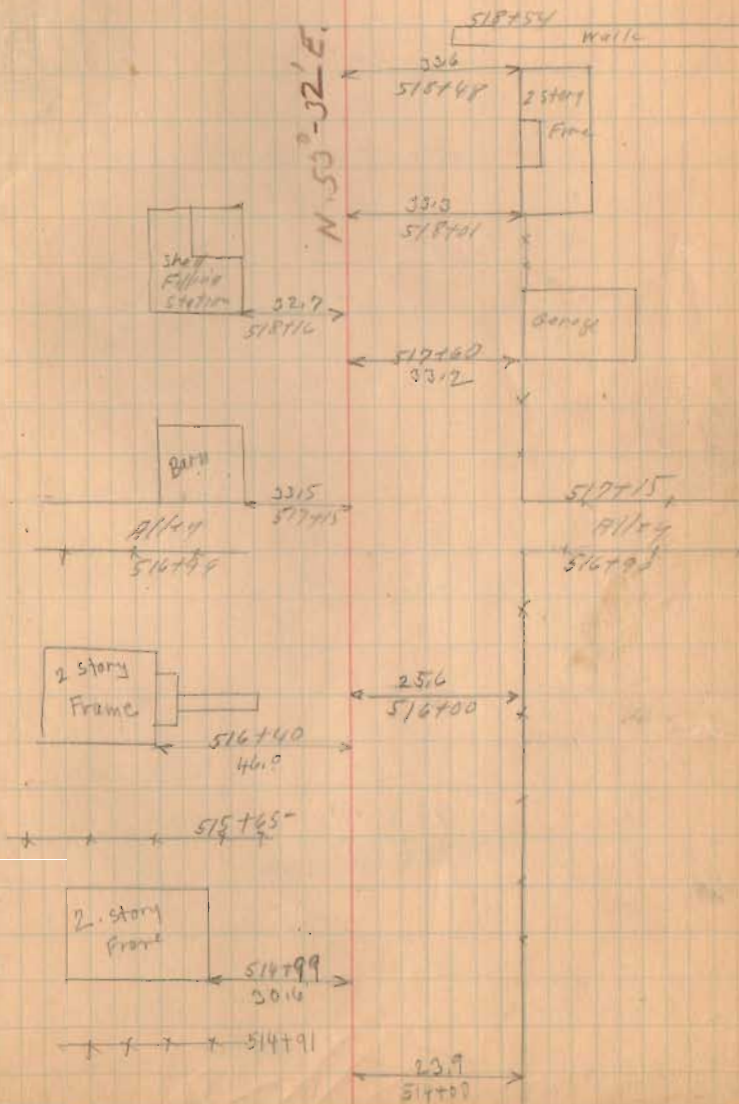
Sitt. 607

12-22-31

45

518782

Ca. Road 153
Columbus St.



1467
INDEXED ON MAP

S.H. 607

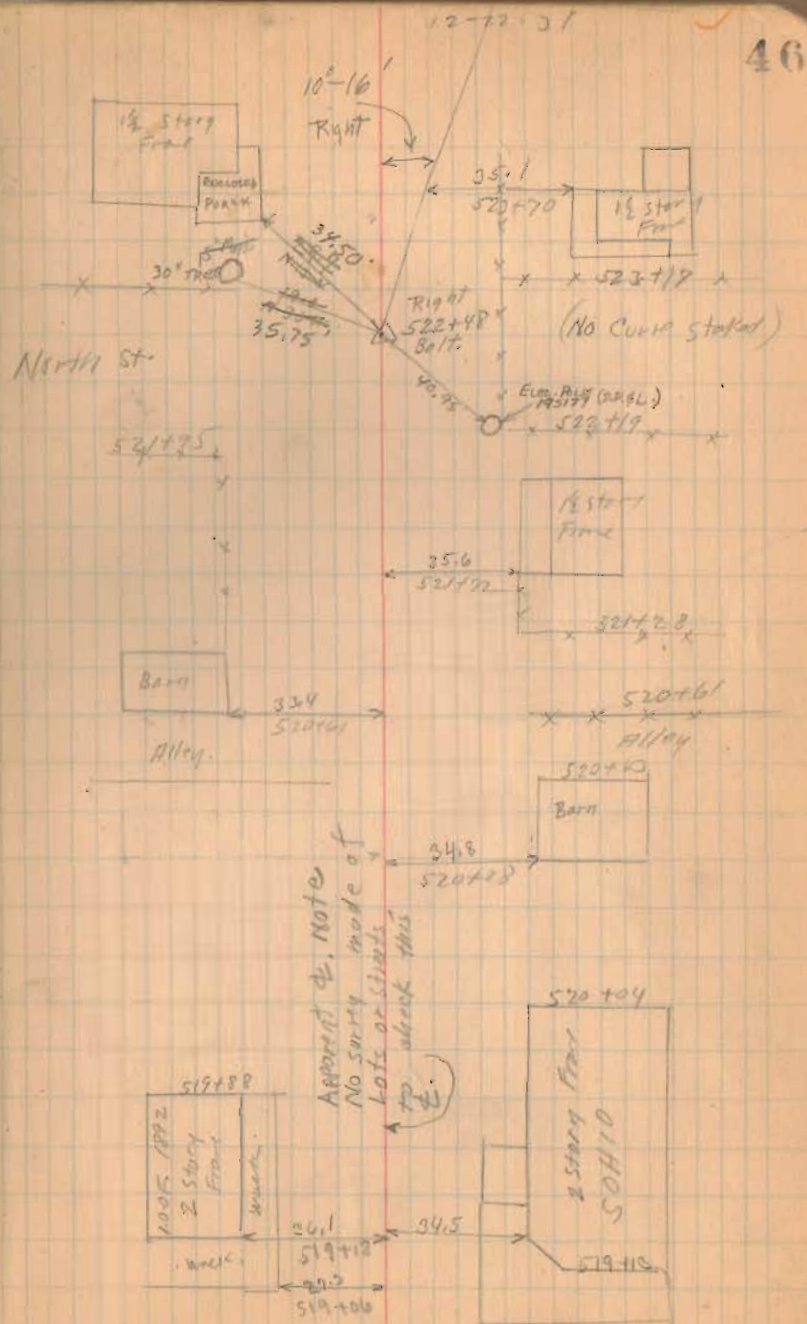
BOLT Fd. (12/5/70)

Sta. 522+48

New WITNESSES

DEG.

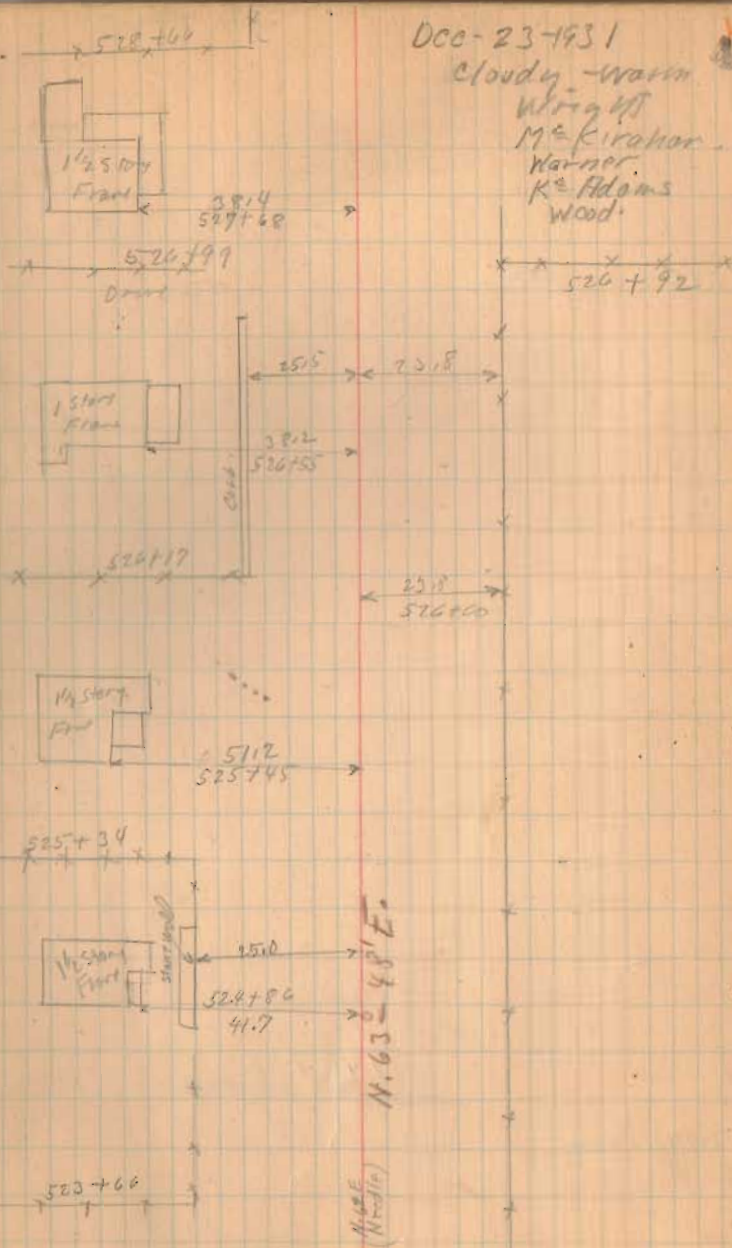
1467
INDEXED ON MAP



S.H. 607,

526+00 Man.

1467
INDEXED ON MAP



SH607

535+00 Mon.

(1467)
INDEXED ON MAP

529+00 Mon.

12-23-31

534114

1/2 story
Finl

46.8
535+66

Richard's

532+59

531132

1/2 story
Finl

47.6
530+93

concrete Wall
530+46

stone Arch

530+18

24.4
530+00

530+00

24.6

22.0

529+00

S.H. 607

572+00

569+00 Man.

561+00 Man.

557+00 Man.

554+00 Man.

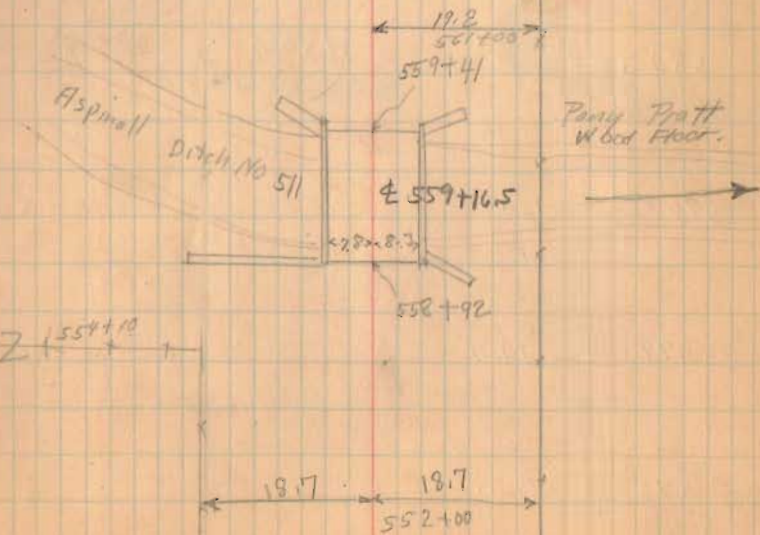
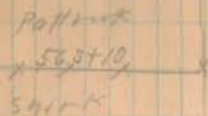
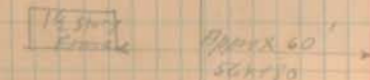
1467
INDEXED ON MAP

12-23-31

50



PL 570+68.5
 Δ - 33° 0'
 D - 20'
 E - 12.30
 T - 84.86
 (Arc) L - 165.00
 R - 286.48
 $P.C.$ - 569+83.49
 $P.T.$ - 571+48.69



S.H. 607

Total Length 58,062.5 Feet
" " 10.9968 Miles
17½ feet less than 11 Miles.

580+00

(1467)
INDEXED ON MAP

576+00 Mon.

574+00 Mon.

12-20-31

51

