

Road 258 Zone
Watkins Road

Oct. 5 1922
Weather Fair
T Montgomery
D Zupp
Freely Weeks

See Page 51 to 54

This is not King Road Note Data

405
266
2430
2430
26230

42
266
2430
2430
26230

375
60
2250
2250
26230

(Measurements in chains)

0+0 25 lbs North 24 1/4 W of cor stone
in center of Mth pike at
the south side John Watkins
lane Thence N 57 1/4 E
Witness (Tele pole NW 42 lbs
brace post NE 40 1/2 lbs
cor post SE 37 1/2 lbs)

4+96 Line fence South

13+77 Line fence south

23+16 Line fence south

34+42 stake 1' East Beech tree
25 lbs North Cor
N 61 1/4 E

1607

INDEXED ON MAP

Road 258

See Page 57 - 58

This is not King Road Note Date

1607
INDEXED ON MAP

3953.41

49159

County Line N 6 1/2 E

60+00 stake set

22' 6" 3 1/2" maple
22' 6" 3 1/2" maple
22' 6" 3 1/2" maple

74+91 stake inside hedge
75+19 stake side of Rd.
75+34 end in N4 NL Pike
1.80 ch south of stone corner
to Watkins

Road 258
Watkins Road

see Page 25 & 26
see Map with Road, 258

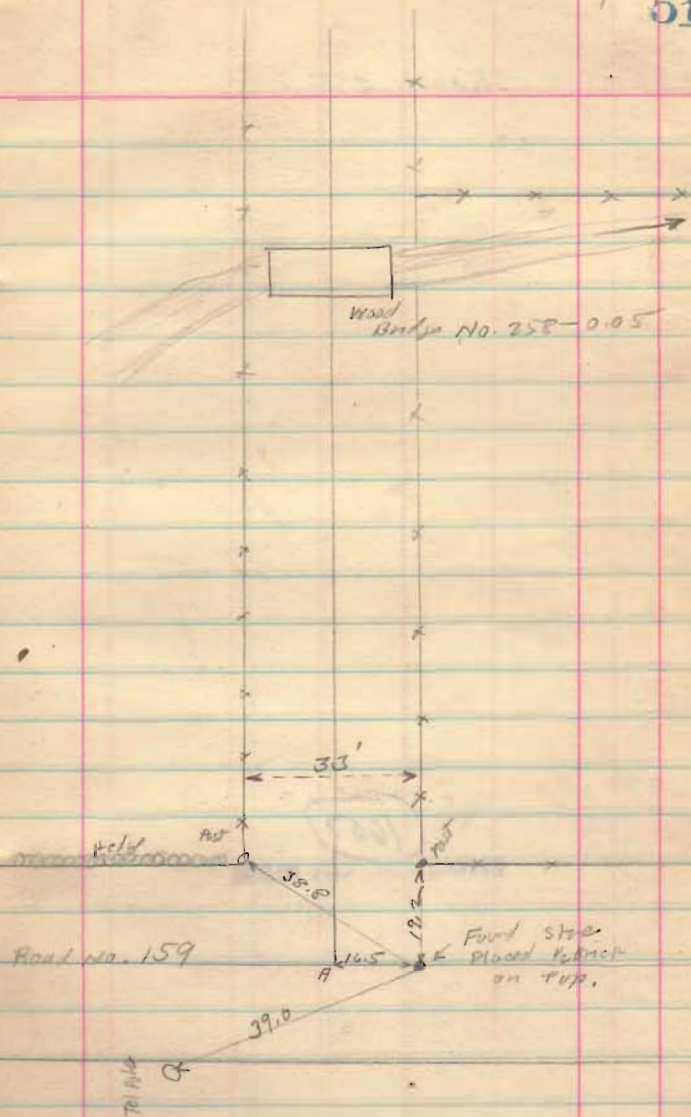
Witnesses on page 25 refer to A

(1607)

INDEXED ON MAP

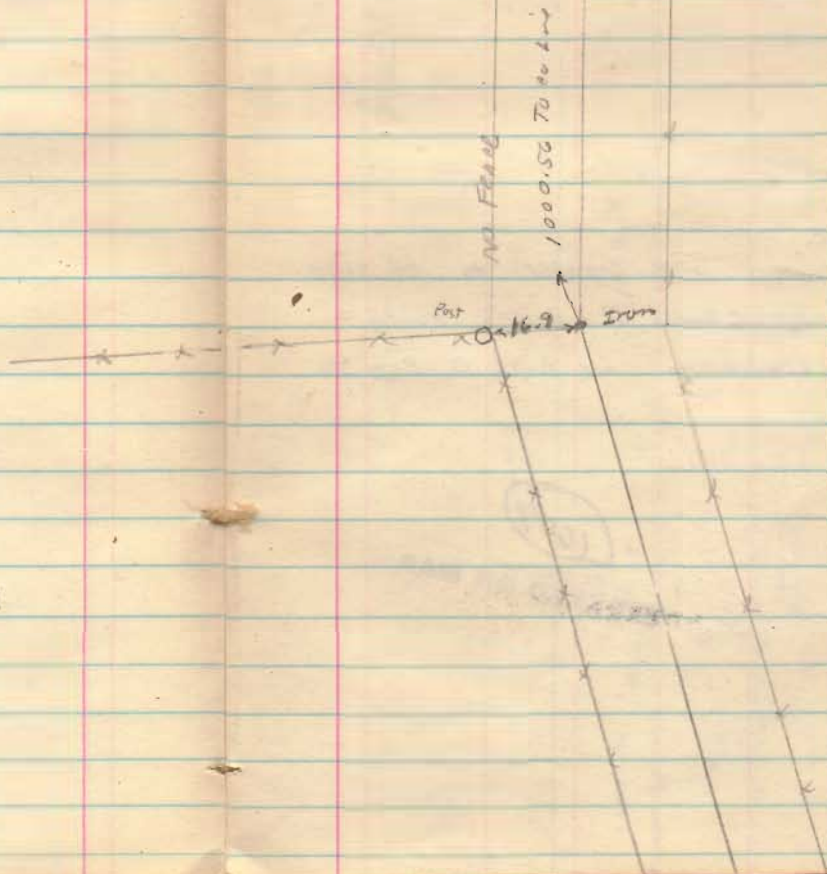
1919 -
Middleburg & North Lewisburg Pike
Mt. Pleasant & North Lewisburg Pike
1898

Aug. 31, 1939
Fine day



Road. 258

2512



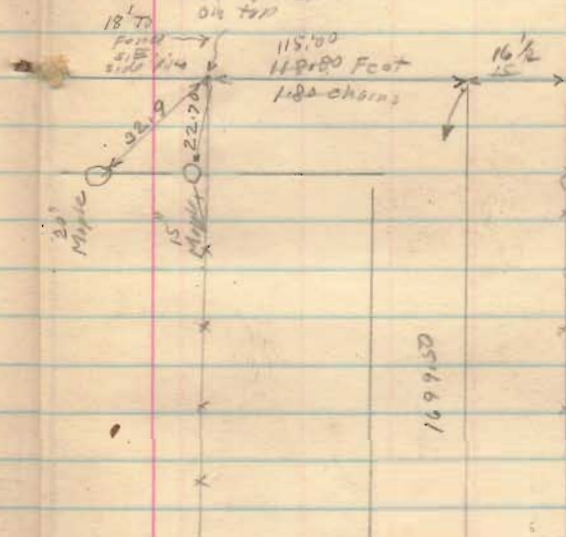
1607

INDEXED ON MAP

Oct. 23, 1904
 Fine day
 F. Wright
 O. L. Mills

Road 158

Found stone
 about 12" under
 surface flood
 Iron & stake
 on top



set on iron and sighted to Co. line
 Stone (Loren & Union) at Road south
 near H. Lewisburg. see Book D Page 46

Sec. 33 75' 119.58
 $(1.1958)(16.5) = 19.73$
 Tan 33 75' = .6556
 $(.6556)(16.5) = 10.82$

1607
 INDEXED ON MAP

