

1-4-2013



Vacation Description

Said part of Zane Township Road No. 157, now known as T.R. 157-A by resolution No. 209-03, is located in Zane Township, Logan County, Ohio and is part of V.M.S. 3160 and V.M.S. 4606. Said part of T.R. 157-A to be vacated lies between the N.E. corner of The Nature Conservancy's 145.410 acre tract (O.R Vol. 426, pg. 278) and the N.W. corner of Midwest Express Inc.'s 100.773 acre tract (O.R. Vol. 63, pg 689). This vacation abuts the West end of a previously vacated portion of T.R. 157 established by resolution No. 106-03 and recorded in O.R. Volume 628, page 67. Said part to be vacated is more particularly described as follows:

Beginning for reference at a railroad spike found at the N.W. corner of John Henault's 1.458 acre tract (O.R. Vol. 874, pg. 857). Said railroad spike being a P.I. shown as T.R. 157 centerline station 98+29.40 in Logan County Engineer's Field Book 711, page 31.

Thence with the centerline of T.R. 157-A, N.  $56^{\circ} - 47' - 23''$  E., 1027.93 feet to a point at the N.W. corner of aforesaid Midwest Express Inc.'s 100.773 acre tract. Said point being the true point of beginning for this vacation description.

Thence perpendicular to the centerline of T.R. 157-A S.  $33^{\circ} - 12' - 37''$  E., 30.00 feet to a point on the South right of way line of T.R. 157-A.

Thence with the South right of way line of T.R. 157-A, S.  $56^{\circ} - 47' - 23''$  W., 600.08 feet to a point.

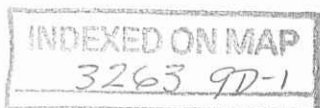
Thence perpendicular to the centerline of T.R. 157-A, N.  $33^{\circ} - 12' - 37''$  W., 60.00 feet to a point on the North right of way line of T.R. 157-A. The above described line passes through a harrow tooth found at the N.E. corner of aforesaid Nature Conservancy's 145.410 acre tract at 30.00 feet.

Thence with the North right of way line of T.R. 157-A, N.  $56^{\circ} - 47' - 23''$  E., 600.08 feet to a point.

Thence perpendicular to the centerline of T.R. 157-A, S.  $33^{\circ} - 12' - 37''$  E., 30.00 feet to the point of beginning.

The above described part of Zane Township Road No. 157-A to be vacated encompasses 0.827 acres more or less.

The basis of bearing being the centerline of T.R. 157 (N.  $56^{\circ} - 47' - 23''$  E.) as shown in Logan County Engineer's Field Book No. 711, page 31.



The above description was prepared by the Logan County Engineer's Office on December 5, 2012 from deeds of record and from an actual field survey performed on December 4, 2012.



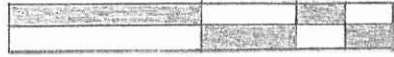
*Curtis D. Dill*

Curtis D. Dill  
Deputy Surveyor  
Logan County Engineer's Office  
Registered Surveyor No. 7310

INDEXED ON MAP  
3263 9D-2

1-4-2013

**APPROVED**



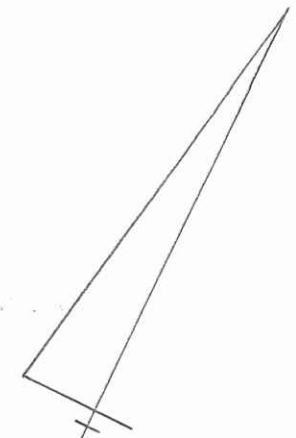
Scale: 1" = 100'

Legend

- = Found Harrow Tooth
- = Found Map Nail

# Road Vacation

Part of Zane Township Road No. 157-A  
 Zane Township  
 Logan Co., Ohio  
 V.M.S. 3140 & 4606  
 December 2012



Midwest Express Inc.  
 121.985 Ac.  
 O.E. Vol. 381, pg. 38

V.M.S. 3140

P.I.  
 98+29.40  
 Fd. R.R. Spike  
 F.Bk. 711, pg. 31

← R.T.R. 157-A  
 N. 56°-47'-23" E.

N. 33°-12'-37" W.  
 40.00'

N. 56°-47'-23" E.  
 400.08'

1027.93' 0.4135 Ac. 0.4135 Ac. P.O.B.

S. 33°-12'-37" E. 30.00'  
 S. 33°-12'-37" E. 30.00'

S. 56°-47'-23" W.  
 400.08'

This part of T.R. 157-A  
 was previously vacated by  
 resolution no. 104-03 recorded  
 in O.E. Vol. 428, pg. 47.

John Herrault  
 1.458 Ac.  
 O.E. Vol. 374, pg. 857

The Nature Conservancy  
 145.410 Ac.  
 O.E. Vol. 426, pg. 278

Fed Two Inc.  
 29.101 Ac.  
 O.E. Vol. 419, pg. 945

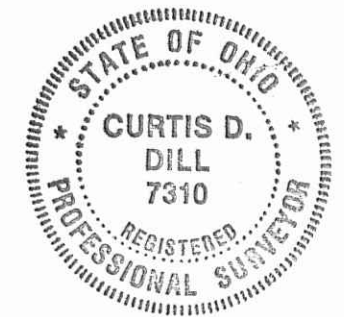
Fed Two Inc.  
 4.00 Ac.  
 O.E. Vol. 436, pg. 769

Midwest Express Inc.  
 100.773 Ac.  
 O.E. Vol. 43, pg. 489

V.M.S. 4606

To Middleburg

St. Rt. 207



*Curtis D. Dill*  
 Curtis D. Dill  
 Deputy Surveyor  
 Logan Co. Engineers Office  
 Registered Surveyor No. 7310

The basis of bearing being the  
 centerline of T.R. 157 (N. 56°-47'-23" E.)  
 as shown in Logan County Engineer's  
 Field Book No. 711, page 31.

The above plat was prepared by the Logan  
 County Engineer's Office on December 7, 2012,  
 from deeds of record and an actual field survey  
 performed on December 4, 2012.

INDEXED ON MAP  
3263 91

# Lee Surveying and Mapping Co., Inc.



Land Surveys • Topography • Subdivisions • Construction Layout

117 N. Madriver St.  
Bellefontaine OH 43311



Phone: (937) 593-7335  
Fax: (937) 593-7444  
surveys@lsmcinc.us

## ROAD VACATION 0.826 ACRE

Lying in Virginia Military Surveys 3160 and 4606, Zane Township, Logan County Ohio.

Being a vacation of part of Township Road 157-A (Plat Cabinet B, Slide 62A-63B) and being more particularly described as follows:

Beginning on a 5/8 inch iron rod found inside a monument box at the intersection of center-lines of Ohio Route 287 (Widths Vary) and Township Road 298 (Resolution No. 640-03)(60 feet wide) at P.I. Station 123+68.50 for Township Road 298 (formerly Township Road 157) per Logan County Engineer's Field Book 711, Page 31.

THENCE, with the center-line of Township Road 298, the said center-line extended and the north line of Virginia Military Survey 4606, S 57°-17'-09"W, a distance of 1511.25 feet to a P.K. nail found at the TRUE POINT OF BEGINNING.

THENCE, with the west line of Township Road 157 Vacated (O.R. 628, Pg. 67), and the east line of the Midwest Express Inc. 6.000 acre tract (O.R. 1093, Pg. 109, Tract I) S 33°-33'-11"E, a distance of 30.01 feet to a 5/8 inch iron rod found.

THENCE, with the south right-of-way of Township Road 157-A, S 57°-17'-09"W, a distance of 600.01 feet to a 5/8 inch iron rod found.

THENCE, with the west line of the Midwest Express INC. 17.936 acre tract, (O.R. 1093, Pg. 109, Tract III), N 33°-33'-11"W, a distance of 30.00 feet to a harrows tooth found.

THENCE, N 32°-42'-51"W, a distance of 30.00 feet to a point on the north right-of-way of Township Road 157-A.

THENCE, with the north right-of-way of Township Road 157-A, N 57°-17'-09"E, a distance of 600.06 feet to a point.

THENCE, with the west line of the said Township Road 157 Vacated, S 32°-42'-51"E, a distance of 30.00 feet to the point of beginning.

Containing 0.826 acre of which 0.310 acre is out of the Midwest Express INC. 6.000 acre tract (O.R. 1093, Pg. 109, Tract I), 0.103 acre is out of the Midwest Express INC 17.936 acre tract (O.R. 1093, Pg. 109, Tract III), and 0.413 acre is out of the Midwest Express INC. 121.985 acre tract (O.R. 381, Pg. 38). There is 0.413 acre in Virginia Military Survey 3160 and 0.413 acre in Virginia Military Survey 4606.

Property is subject to any and all previous easements and rights-of-way of record.

The basis for bearings is the center-line of Township Road 298, being S 57°-17'-09"W, and all other bearings are from angles and distances measured in a field survey by Lee Surveying and Mapping Co., Inc. on December 16, 2012.



Description prepared by:

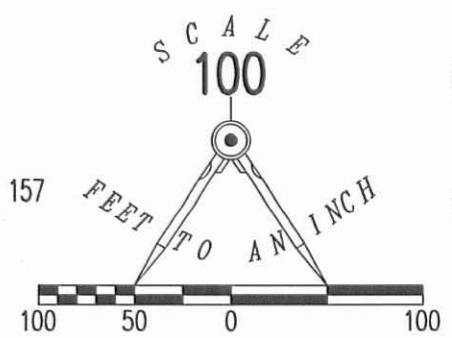
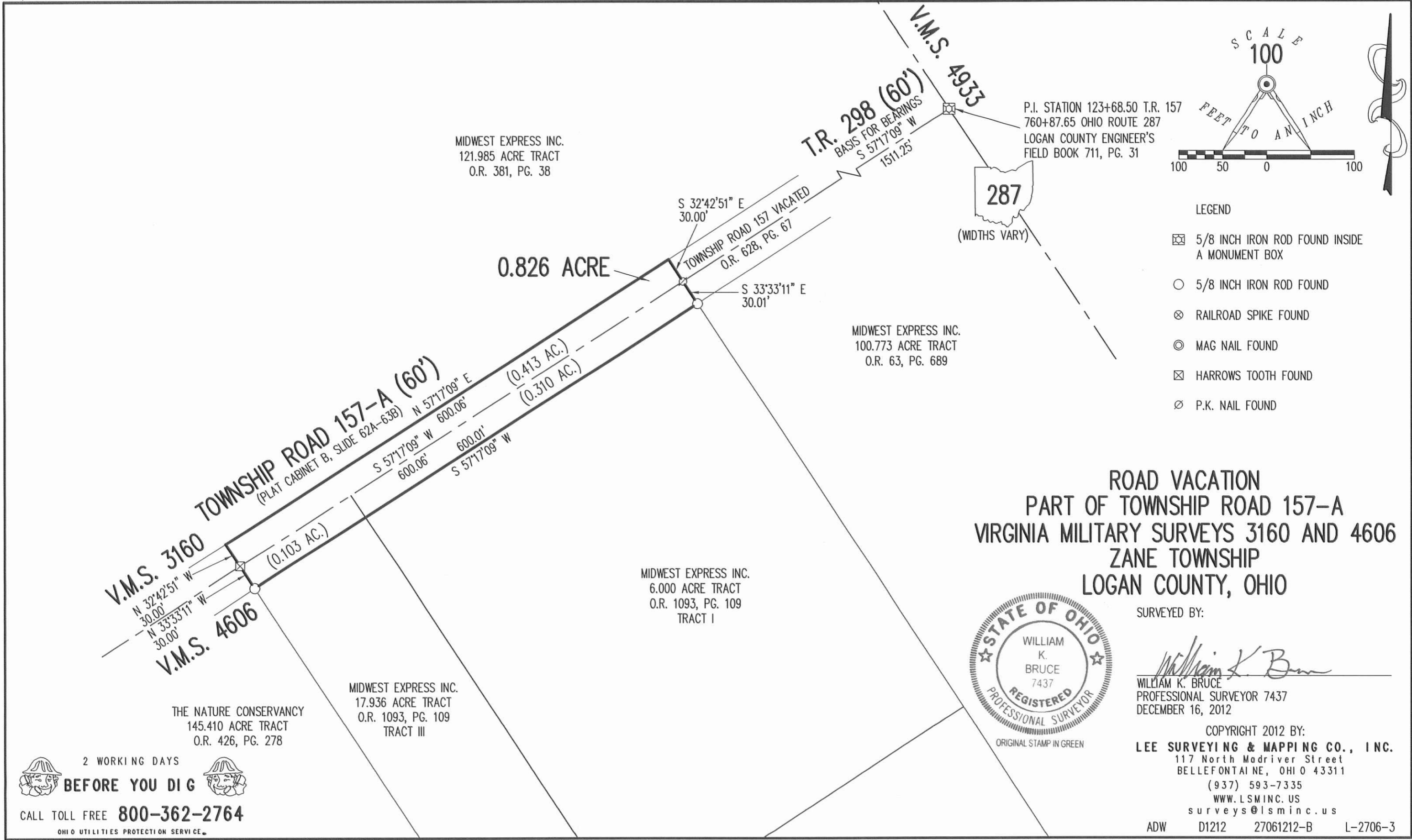
*William K. Bruce*  
William K. Bruce  
Professional Surveyor 7437  
January 24, 2013

INDEXED ON MAP

3263 10-D

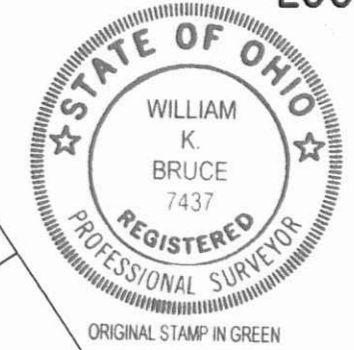
L-2706

✓ **APPROVED**  
1-22-13



- LEGEND
- ☒ 5/8 INCH IRON ROD FOUND INSIDE A MONUMENT BOX
  - 5/8 INCH IRON ROD FOUND
  - ⊗ RAILROAD SPIKE FOUND
  - ⊙ MAG NAIL FOUND
  - ⊠ HARROWS TOOTH FOUND
  - ⊘ P.K. NAIL FOUND

**ROAD VACATION  
PART OF TOWNSHIP ROAD 157-A  
VIRGINIA MILITARY SURVEYS 3160 AND 4606  
ZANE TOWNSHIP  
LOGAN COUNTY, OHIO**



SURVEYED BY:  
*William K. Bruce*  
WILLIAM K. BRUCE  
PROFESSIONAL SURVEYOR 7437  
DECEMBER 16, 2012

COPYRIGHT 2012 BY:  
**LEE SURVEYING & MAPPING CO., INC.**  
117 North Madriver Street  
BELLEFONTAINE, OHIO 43311  
(937) 593-7335  
WWW.LSMINC.US  
surveys@lsminc.us  
ADW D1212 27061212-B L-2706-3

2 WORKING DAYS  
**BEFORE YOU DIG**  
CALL TOLL FREE **800-362-2764**  
OHIO UTILITIES PROTECTION SERVICE

INDEXED ON MAP  
3263 10P

'3-13-13

# Lee Surveying and Mapping Co., Inc.

Land Surveys • Topography • Subdivisions • Construction Layout



117 N. Madriver St.  
Bellefontaine OH 43311



Phone: (937) 593-7335  
Fax: (937) 593-7444  
surveys@lsmc.us

## ROAD VACATION 0.654 ACRE

Lying in Virginia Military Surveys 3160 and 4606, Zane Township, Logan County Ohio.

Being a vacation of all of Township Road 298 (Commissioners Resolution No. 460-03) and being more particularly described as follows:

Beginning on a 5/8 inch iron rod found inside a monument box at the intersection of center-lines of Ohio Route 287 (Widths Vary) and Township Road 298 (60 feet wide) at P.I. Station 123+68.50 for Township Road 298 (formerly Township Road 157) per Logan County Engineer's Field Book 711, Page 31.

THENCE, with the center-line of Township Road 298 and the north line of Virginia Military Survey 4606, S 57°-17'-09"W, a distance of 100.02 feet to a point at the TRUE POINT OF BEGINNING.

THENCE, S 33°-51'-33"E, a distance of 30.01 feet to a point at the east right-of-way of Ohio Route 287, and the south right-of-way of Township Road 298.

THENCE, with the south right-of-way of Township Road 298, S 57°-17'-09"W, a distance of 475.71 feet to a point.

THENCE, with the east line of Township Road 157 Vacated (O.R. 628, Pg. 67), N 32°-42'-51"W, a distance of 60.00 feet to a point, passing a MAG nail found at the southwest corner of the Midwest Express INC 3.001 acre tract (O.R. 1061, Pg. 819), at a distance of 30.00 feet.

THENCE, with the north right-of-way of Township Road 298, N 57°-17'-09"E, a distance of 474.51 feet to a point.

THENCE, S 33°-51'-33"E, a distance of 30.01 feet to the point of beginning.

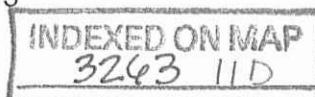
Containing 0.654 acre of which 0.066 acre out of the Midwest Express INC. 121.985 acre tract (O.R. 381, Pg. 38), 0.327 acre out of the Midwest Express INC. 100.773 acre tract (O.R. 63, Pg. 689) and 0.261 acre out of the Midwest Express INC. 3.001 acre tract (O.R. 1061, Pg. 819). There is 0.327 acre in Virginia Military Survey 3160 and 0.327 acre in Virginia Military Survey 4606.

Property is subject to any and all previous easements and rights-of-way of record.

The basis for bearings is the center-line of Township Road 298, being S 57°-17'-09"W, and all other bearings are from angles and distances measured in a field survey by Lee Surveying and Mapping Co., Inc. on December 16, 2012.

Description prepared by:

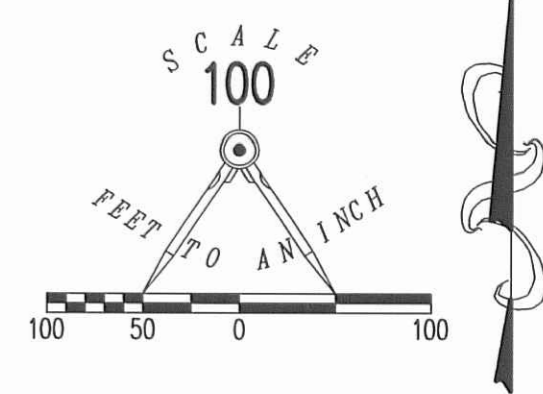
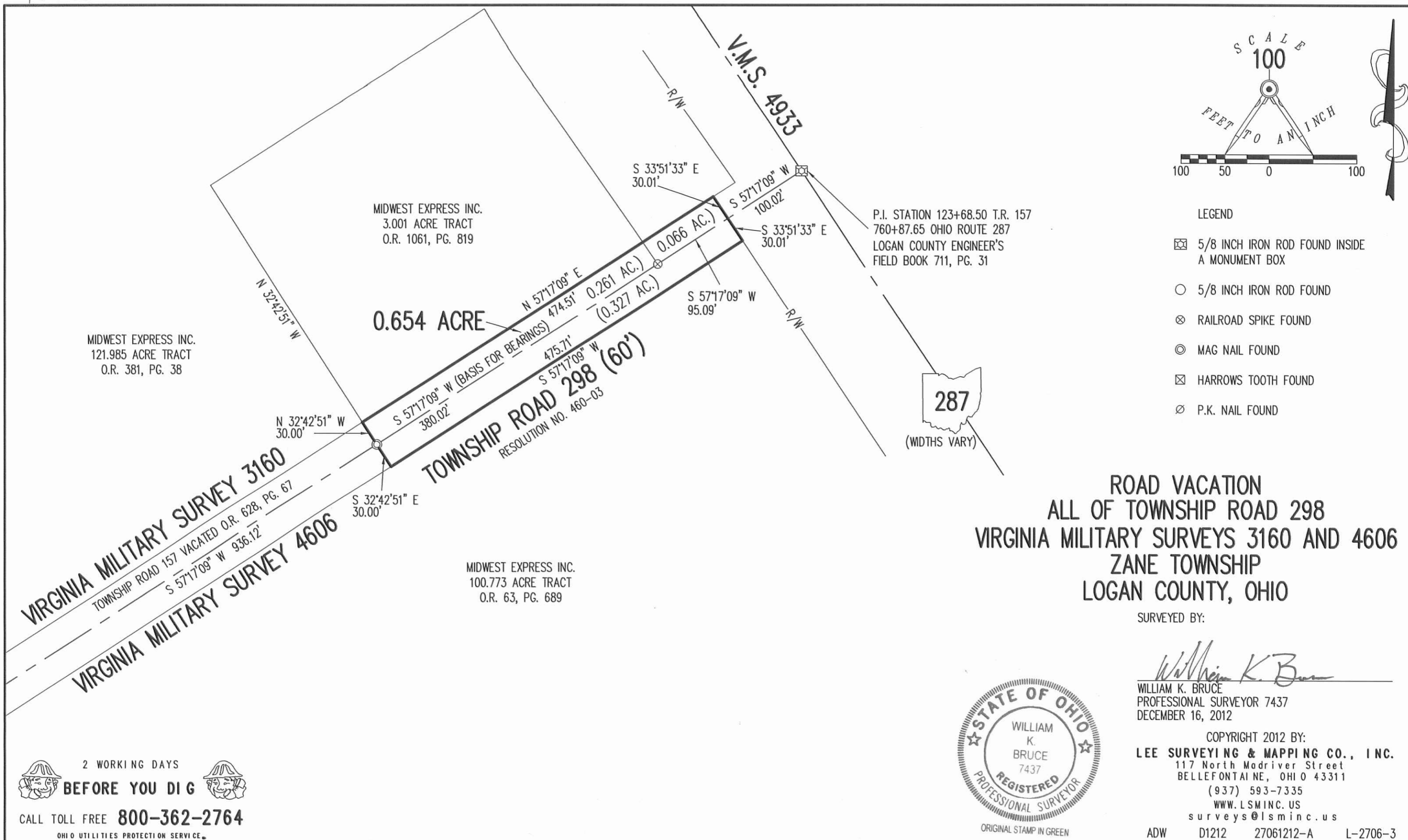
William K. Bruce  
Professional Surveyor 7437  
January 17, 2013  
Revised March 13, 2013



L-2706

**APPROVED**

1-23-13



- LEGEND
- 5/8 INCH IRON ROD FOUND INSIDE A MONUMENT BOX
  - 5/8 INCH IRON ROD FOUND
  - RAILROAD SPIKE FOUND
  - MAG NAIL FOUND
  - HARROWS TOOTH FOUND
  - P.K. NAIL FOUND

**ROAD VACATION  
ALL OF TOWNSHIP ROAD 298  
VIRGINIA MILITARY SURVEYS 3160 AND 4606  
ZANE TOWNSHIP  
LOGAN COUNTY, OHIO**

SURVEYED BY:  
*William K. Bruce*  
WILLIAM K. BRUCE  
PROFESSIONAL SURVEYOR 7437  
DECEMBER 16, 2012



COPYRIGHT 2012 BY:  
**LEE SURVEYING & MAPPING CO., INC.**  
117 North Madriver Street  
BELLEFONTAINE, OHIO 43311  
(937) 593-7335  
WWW.LSMINC.US  
surveys@lsminc.us  
ADW D1212 27061212-A L-2706-3

2 WORKING DAYS  
**BEFORE YOU DIG**  
CALL TOLL FREE **800-362-2764**  
OHIO UTILITIES PROTECTION SERVICE

INDEXED ON MAP  
3263 11P

4-9-13

# Lee Surveying and Mapping Co., Inc.



Land Surveys • Topography • Subdivisions • Construction Layout

117 N. Madriver St.  
Bellefontaine OH 43311



Phone: (937) 593-7335  
Fax: (937) 593-7444  
surveys@lsminc.us

## MIDWEST EXPRESS INC. 11.165 ACRES

Lying in Virginia Military Survey 4606, Zane Township, Logan County, Ohio.

Being all of the Midwest Express INC., 6.000 acre tract and 5.165 acre tract as deeded and described in Official Record 1093, Page 109, Tracts I and II of the Logan County Records of Deeds and being more particularly described as follows:

Commencing at a 5/8 inch iron rod found inside a monument box on the center-line of Ohio Route 287 (widths vary) at the northeast corner of Virginia Military Survey 4606.

THENCE, with the north line of Virginia Military Survey 4606, S 57°-17'-09"W, a distance of 1511.25 feet to a P.K. nail found at the TRUE POINT OF BEGINNING.

THENCE, with the west line of the Midwest Express, INC. 100.773 acre tract (O.R. 63, Pg. 689), S 33°-33'-11"E, a distance of 1080.86 feet to a 5/8 inch iron rod found, passing a 5/8 inch iron rods found at 30.00 feet and 580.86 feet.

THENCE, with the lines of the Midwest Express INC 17.936 acre tract (O.R. 1093, Pg. 109, Tract III) the following two courses:

S 57°-17'-09"W, a distance of 450.00 feet to a 5/8 inch iron rod found.

N 33°-33'-11"W, a distance of 1080.86 feet to a MAG nail found, passing a 5/8 inch iron rods found at 500.00 feet and 1050.86 feet.

THENCE, with the north line of Virginia Military Survey 4606 and the center-line of Township Road 157-A (60 feet wide), N 57°-17'-09"E, a distance of 450.00 feet to the point of beginning.

Containing 11.165 acres of which 0.310 acre is within the highway right-of-way.

Property is subject to any and all previous easements and rights-of-way of record.

The basis for bearings is the center-line of Township Road 157-A, being N 57°-17'-09"E, and all other bearings are from angles and distances measured in a field survey by Lee Surveying and Mapping Co., Inc. on December 16, 2012.

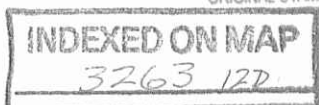
Description prepared by:

William K. Bruce  
Professional Surveyor 7437  
April 3, 2013

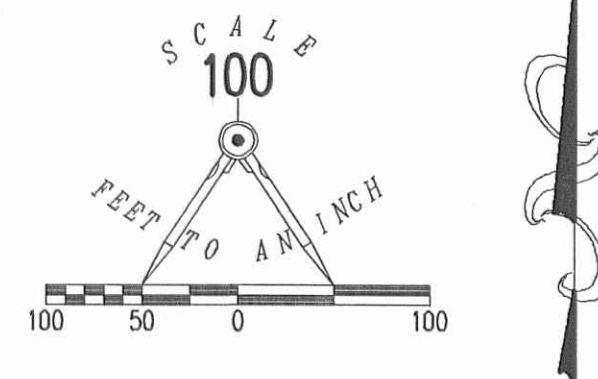


ORIGINAL STAMP IN GREEN

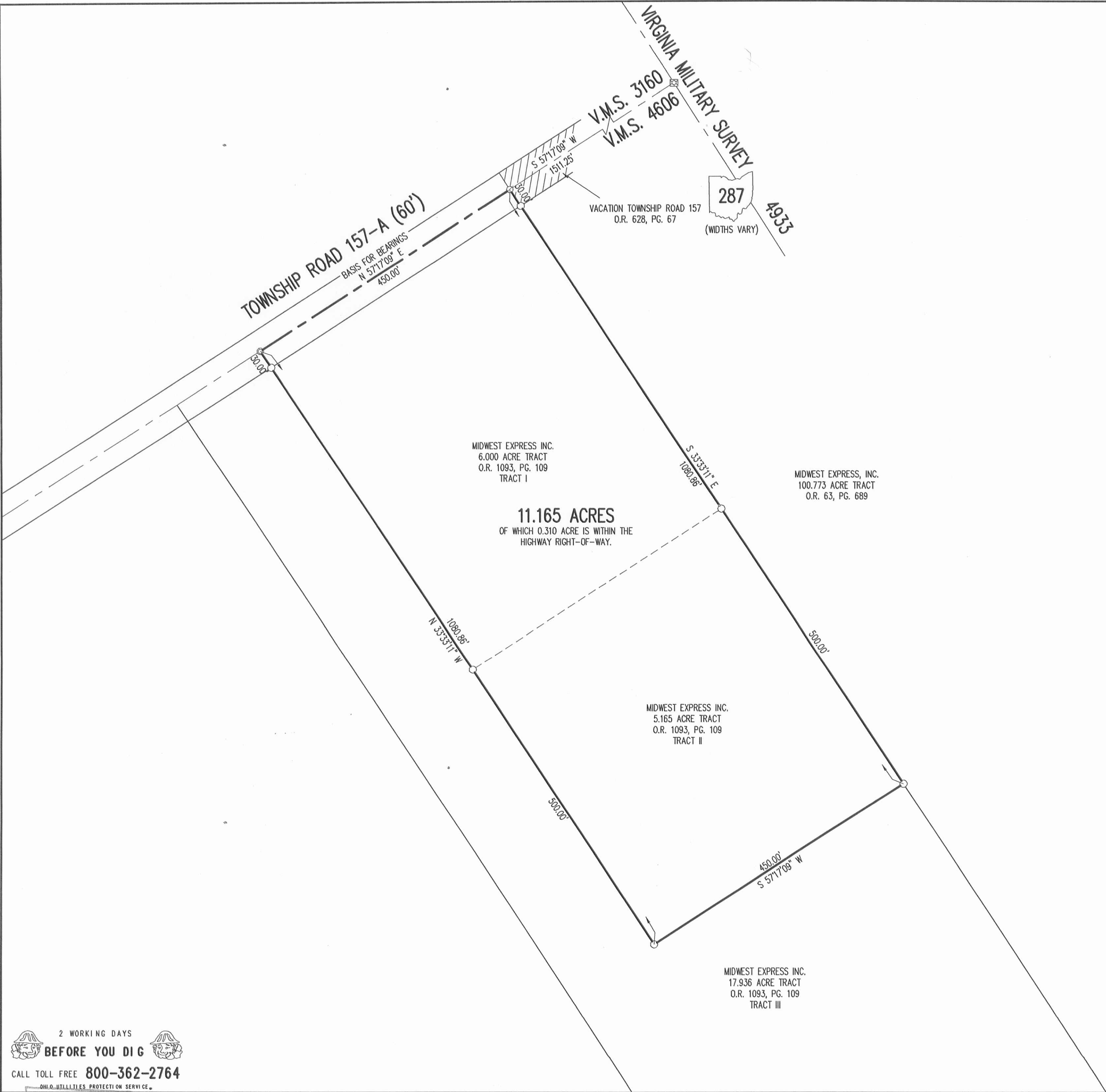
L-27060413





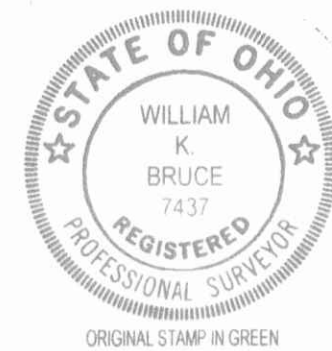


- LEGEND
- 5/8 INCH IRON ROD FOUND
  - ⊠ 5/8 INCH IRON ROD FOUND INSIDE A MONUMENT BOX
  - ⊙ P.K. NAIL FOUND
  - ⊙ MAG NAIL FOUND



A SURVEY OF A 11.165 ACRE TRACT OUT OF ALL OF THE MIDWEST EXPRESS INC. 6.000 ACRE AND 5.165 ACRE TRACTS OFFICIAL RECORD 1093, PAGE 109 TRACT I AND II VIRGINIA MILITARY SURVEY 4606 ZANE TOWNSHIP LOGAN COUNTY, OHIO

SURVEYED BY:  
*William K. Bruce*  
WILLIAM K. BRUCE  
PROFESSIONAL SURVEYOR 7437  
DECEMBER 16, 2012



COPYRIGHT 2013 BY:  
**LEE SURVEYING & MAPPING CO., INC.**  
117 North Madriver Street  
BELLEFONTAINE, OHIO 43311  
(937) 593-7335  
WWW.LSMINC.US  
surveys@lsminc.us  
ADW D0413 27060413 L-2706-2

2 WORKING DAYS  
**BEFORE YOU DIG**  
CALL TOLL FREE 800-362-2764  
OHIO UTILITIES PROTECTION SERVICE

INDEXED ON MAP  
3263 12P

818-14

# Lee Surveying and Mapping Co., Inc.



Land Surveys • Topography • Subdivisions • Construction Layout

117 N. Madriver St.  
Bellefontaine OH 43311



Phone: (937) 593-7335  
Fax: (937) 593-7444  
surveys@lsminc.us

## FED TWO, INC. 28.141 ACRES

Lying in Virginia Military Surveys 4606 and 12256, Zane Township, Logan County and Allen Township, Union County, Ohio.

Being part of the Fed Two, INC. 26.475 acre tract as deeded in Official Record 419, Page 945 Exhibit "C" in Logan County Record of Deeds, all of the Fed Two, INC. 5.938 acre tract as deeded in Official Record 931, Page 128 in Logan County Record of Deeds and all of the Fed Two, INC. 18.975 acre tract as deeded in Official Record 399, Page 20 in Logan County Record of Deeds and Official Record 162, Page 234 in Union County Record of Deeds and being more particularly described as follows:

Beginning at a railroad spike found at the intersection of the south line of Virginia Military Survey 4606 and the center-line of Logan County Highway 153 (60 feet wide).

THENCE, with the center-line of Logan County Highway 153, S 81°-37'-09"W, a distance of 108.32 feet to a P.K. nail found.

THENCE, with the lines of the Raymond Bailey 4.00 acre tract (O.R. 711, Pg. 346 Logan County), the following four courses:

N 30°-59'-50"W, a distance of 256.19 feet to a 1 inch iron pipe found, passing a 1 inch iron pipe found at 32.50 feet.

N 60°-16'-56"E, a distance of 104.42 feet to a 1 inch iron pipe found.

N 30°-51'-32"W, a distance of 254.00 feet to a 1 inch iron pipe found.

S 59°-08'-28"W, a distance of 327.22 feet to a 5/8 inch iron rod set.

THENCE, N 30°-51'-32"W, a distance of 625.00 feet to a 5/8 inch iron rod set.

THENCE, N 59°-08'-28"E, a distance of 225.00 feet to a 5/8 inch iron rod set.

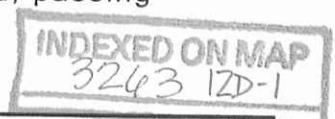
THENCE, N 30°-51'-32"W, a distance of 326.41 feet to a 5/8 inch iron rod found.

THENCE, with the south line of The Nature Conservancy 145.41 acre tract (O.R. 426, Pg. 278 Logan County) and the south line of the Midwest Express INC. 10.000 acre tract (O.R. 1093, Pg. 109, Tract IV Logan County), N 51°-28'-28"E, a distance of 785.23 feet to a 5/8 inch iron rod found.

THENCE, with the west line of the Jean E. Traikovich 65.99 acre tract (O.R. 633, Pg. 783 Logan County and O.R. 448, Pg. 743 Union County), crossing the Logan/Union County Line, S 30°-51'-32"E, a distance of 1627.32 feet to a railroad spike found, passing a 5/8 inch iron rod found at 1597.32 feet.

THENCE, with the center-line of Union County Highway 168A (Stokes Road) (60 feet wide), S 59°-26'-00"W, a distance of 156.69 feet to a railroad spike found.

THENCE, with the east line of the Fed Two, Inc. 1.00 acre tract (O.R. 678, Pg. 472 Logan County and O.R. 496, Pg. 807 Union County) N 30°-59'-50"W, a distance of 206.00 feet to a 5/8 inch iron rod found, passing a 5/8 inch iron rod found at 30.00 feet.



# Lee Surveying and Mapping Co., Inc.

Land Surveys • Topography • Subdivisions • Construction Layout

117 N. Madriver St.  
Bellefontaine OH 43311



Phone: (937) 593-7335  
Fax: (937) 593-7444  
surveys@lsminc.us

THENCE, with the north line of said 1.00 acre tract and the north line of the David J. Cook and Megan Cook 1.50 acre tract (O.R. 871, Pg. 401 Logan County), crossing the Union/Logan County line, S 60°-16'-57"W, a distance of 523.06 feet to a 5/8 inch iron rod found.

THENCE, with the west line of the said 1.50 acre tract, S 30°-59'-36"E, a distance of 195.58 feet to the point of beginning, passing a 5/8 inch iron rod found at 163.07 feet.

Containing 28.141 acres of which 0.183 acre is within the highway right-of-way, 26.587 acres is within Logan County and 1.554 acres is within Union County.

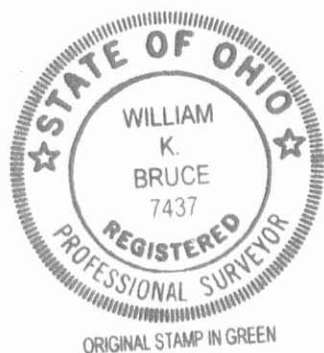
Property is subject to any and all previous easements and rights-of-way of record.

The basis for bearings is the center-line of Union County Highway 168A, being S 59°-26'-00"W, and all other bearings are from angles and distances measured in a field survey by Lee Surveying and Mapping Co., Inc. on July 17, 2014.

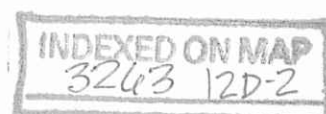
Description prepared by:

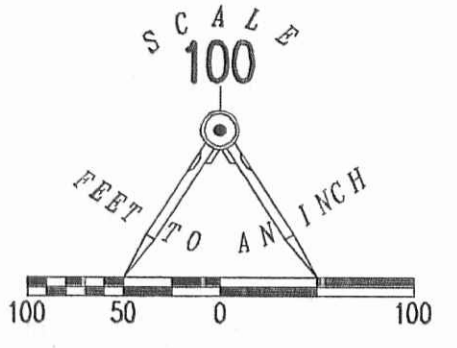
A handwritten signature in black ink that reads "William K. Bruce".

William K. Bruce  
Professional Surveyor 7437  
July 17, 2014

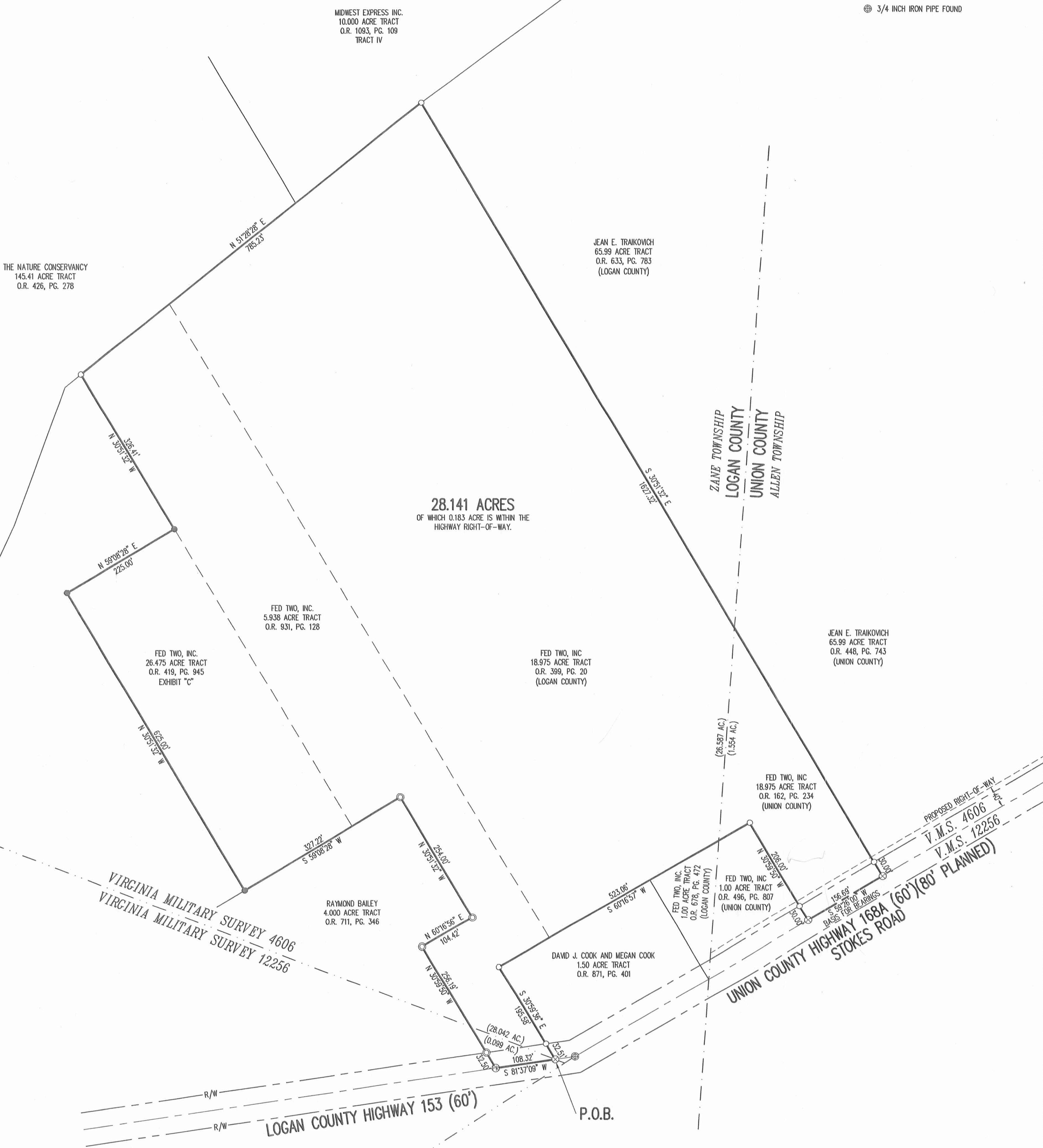


L-27060614





- LEGEND
- 5/8 INCH IRON ROD SET WITH PLASTIC I.D. CAP STAMPED "LSM7437"
  - 5/8 INCH IRON ROD FOUND
  - ⊗ P.K. NAIL FOUND
  - ⊗ RAILROAD SPIKE FOUND
  - ⊗ 1 INCH IRON PIPE FOUND
  - ⊗ 3/4 INCH IRON PIPE FOUND



A SURVEY OF A 28.141 ACRE TRACT  
 PART OF THE FED TWO, INC.  
 26.475 ACRE TRACT  
 OFFICIAL RECORD 419, PAGE 945 EXHIBIT "C" (LOGAN COUNTY)  
 ALL OF THE FED TWO, INC.  
 5.938 ACRE TRACT  
 OFFICIAL RECORD 931, PAGE 128 (LOGAN COUNTY)  
 AND ALL OF THE FED TWO, INC.  
 18.975 ACRE TRACT  
 OFFICIAL RECORD 399, PAGE 20 (LOGAN COUNTY)  
 OFFICIAL RECORD 162, PAGE 234 (UNION COUNTY)  
 VIRGINIA MILITARY SURVEY 4606 AND 12256  
 ZANE TOWNSHIP, LOGAN COUNTY  
 ALLEN TOWNSHIP, UNION COUNTY, OHIO

SURVEYED BY:  
  
 WILLIAM K. BRUCE  
 PROFESSIONAL SURVEYOR 7437  
 JULY 17, 2014



COPYRIGHT 2014 BY:  
 LEE SURVEYING & MAPPING CO., INC.  
 117 North Madriver Street  
 BELLEFONTAINE, OHIO 43311  
 (937) 593-7335  
 WWW.LEESURV.COM  
 surveys@lsmc.us

**FLOOD ZONE NOTE:**  
 BY GRAPHIC PLOTTING ONLY, THE AREA SHOWN IS IN FLOOD ZONE "X" AS SHOWN ON FLOOD INSURANCE RATE MAP (FIRM) COMMUNITY PANEL NUMBER 39158C0218D WITH AN EFFECTIVE DATE OF DECEMBER 16, 2008. (UNION COUNTY)  
 2 WORKING DAYS  
**BEFORE YOU DIG**  
 CALL TOLL FREE 800-362-2764  
 OHIO UTILITIES PROTECTION SERVICE.

INDEXED ON MAP 3263 12P

8-18-14

# Lee Surveying and Mapping Co., Inc.



Land Surveys • Topography • Subdivisions • Construction Layout

117 N. Madriver St.  
Bellefontaine OH 43311



Phone: (937) 593-7335  
Fax: (937) 593-7444  
surveys@lsminc.us

## FED TWO, INC. 28.141 ACRES

Lying in Virginia Military Surveys 4606 and 12256, Zane Township, Logan County and Allen Township, Union County, Ohio.

Being part of the Fed Two, INC. 26.475 acre tract as deeded in Official Record 419, Page 945 Exhibit "C" in Logan County Record of Deeds, all of the Fed Two, INC. 5.938 acre tract as deeded in Official Record 931, Page 128 in Logan County Record of Deeds and all of the Fed Two, INC. 18.975 acre tract as deeded in Official Record 399, Page 20 in Logan County Record of Deeds and Official Record 162, Page 234 in Union County Record of Deeds and being more particularly described as follows:

Beginning at a railroad spike found at the intersection of the south line of Virginia Military Survey 4606 and the center-line of Logan County Highway 153 (60 feet wide).

THENCE, with the center-line of Logan County Highway 153, S 81°-37'-09"W, a distance of 108.32 feet to a P.K. nail found.

THENCE, with the lines of the Raymond Bailey 4.00 acre tract (O.R. 711, Pg. 346 Logan County), the following four courses:

N 30°-59'-50"W, a distance of 256.19 feet to a 1 inch iron pipe found, passing a 1 inch iron pipe found at 32.50 feet.

N 60°-16'-56"E, a distance of 104.42 feet to a 1 inch iron pipe found.

N 30°-51'-32"W, a distance of 254.00 feet to a 1 inch iron pipe found.

S 59°-08'-28"W, a distance of 327.22 feet to a 5/8 inch iron rod set.

THENCE, N 30°-51'-32"W, a distance of 625.00 feet to a 5/8 inch iron rod set.

THENCE, N 59°-08'-28"E, a distance of 225.00 feet to a 5/8 inch iron rod set.

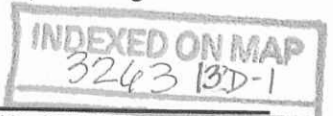
THENCE, N 30°-51'-32"W, a distance of 326.41 feet to a 5/8 inch iron rod found.

THENCE, with the south line of The Nature Conservancy 145.41 acre tract (O.R. 426, Pg. 278 Logan County) and the south line of the Midwest Express INC. 10.000 acre tract (O.R. 1093, Pg. 109, Tract IV Logan County), N 51°-28'-28"E, a distance of 785.23 feet to a 5/8 inch iron rod found.

THENCE, with the west line of the Jean E. Traikovich 65.99 acre tract (O.R. 633, Pg. 783 Logan County and O.R. 448, Pg. 743 Union County), crossing the Logan/Union County Line, S 30°-51'-32"E, a distance of 1627.32 feet to a railroad spike found, passing a 5/8 inch iron rod found at 1597.32 feet.

THENCE, with the center-line of Union County Highway 168A (Stokes Road) (60 feet wide), S 59°-26'-00"W, a distance of 156.69 feet to a railroad spike found.

THENCE, with the east line of the Fed Two, Inc. 1.00 acre tract (O.R. 678, Pg. 472 Logan County and O.R. 496, Pg. 807 Union County) N 30°-59'-50"W, a distance of 206.00 feet to a 5/8 inch iron rod found, passing a 5/8 inch iron rod found at 30.00 feet.



# Lee Surveying and Mapping Co., Inc.

Land Surveys • Topography • Subdivisions • Construction Layout

117 N. Madriver St.  
Bellefontaine OH 43311



Phone: (937) 593-7335  
Fax: (937) 593-7444  
surveys@lsminc.us

THENCE, with the north line of said 1.00 acre tract and the north line of the David J. Cook and Megan Cook 1.50 acre tract (O.R. 871, Pg. 401 Logan County), crossing the Union/Logan County line, S 60°-16'-57"W, a distance of 523.06 feet to a 5/8 inch iron rod found.

THENCE, with the west line of the said 1.50 acre tract, S 30°-59'-36"E, a distance of 195.58 feet to the point of beginning, passing a 5/8 inch iron rod found at 163.07 feet.

Containing 28.141 acres of which 0.183 acre is within the highway right-of-way, 26.587 acres is within Logan County and 1.554 acres is within Union County.

Property is subject to any and all previous easements and rights-of-way of record.

The basis for bearings is the center-line of Union County Highway 168A, being S 59°-26'-00"W, and all other bearings are from angles and distances measured in a field survey by Lee Surveying and Mapping Co., Inc. on July 17, 2014.

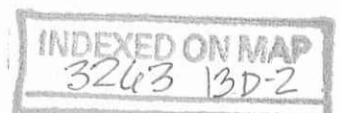
Description prepared by:

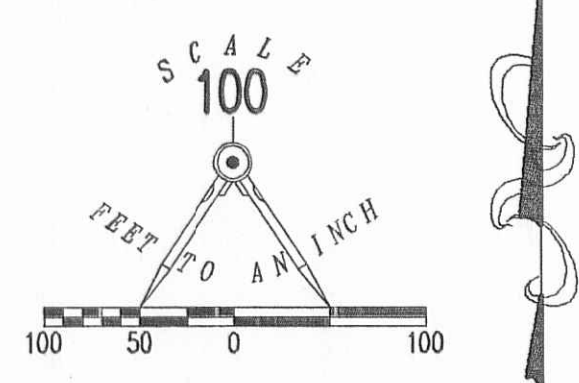
A handwritten signature in black ink that reads 'William K. Bruce'. The signature is written in a cursive, flowing style.

William K. Bruce  
Professional Surveyor 7437  
July 17, 2014

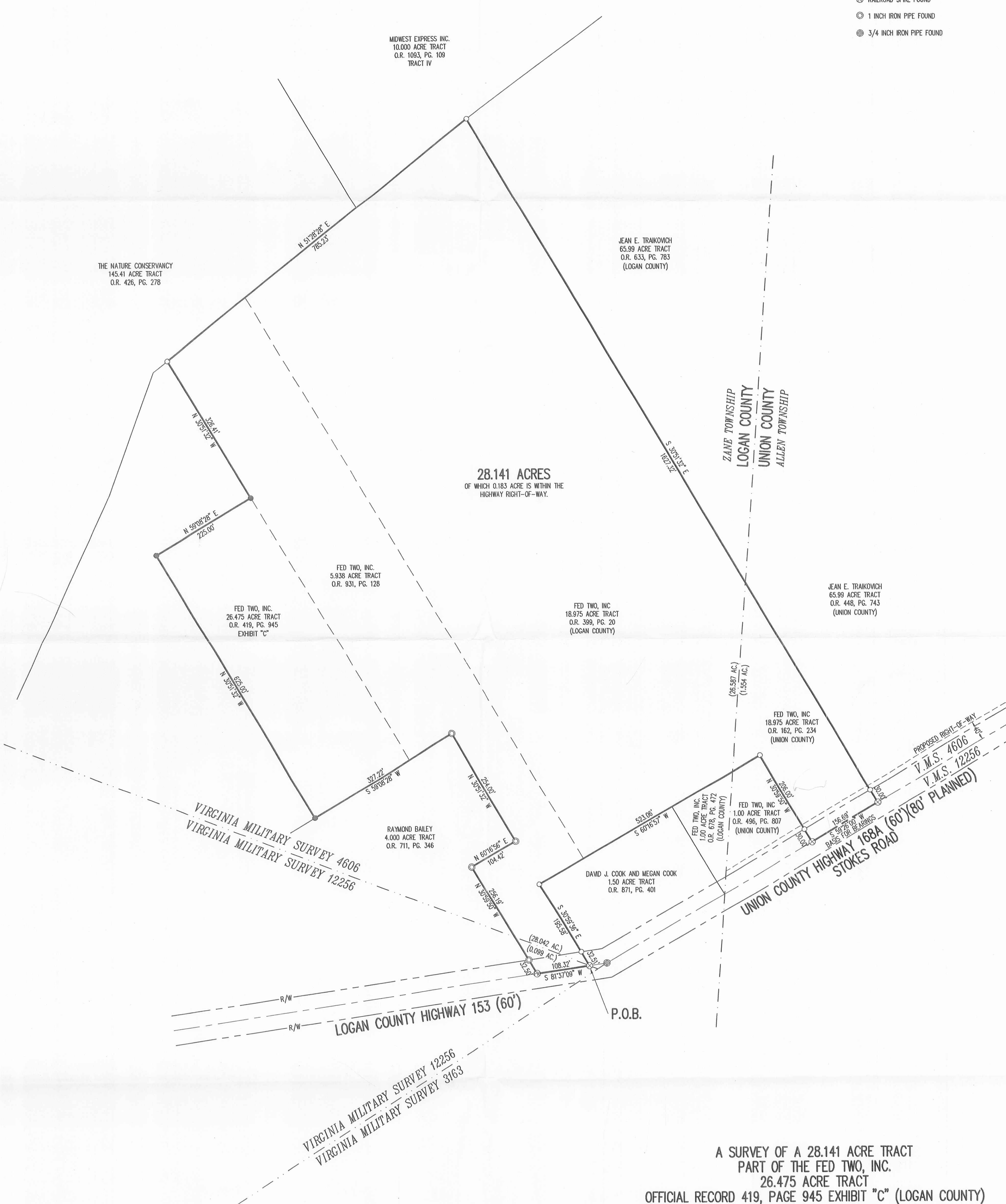


L-27060614





- LEGEND
- 5/8 INCH IRON ROD SET WITH PLASTIC I.D. CAP STAMPED "LSM7437"
  - 5/8 INCH IRON ROD FOUND
  - ⊕ P.K. NAIL FOUND
  - ⊗ RAILROAD SPIKE FOUND
  - ⊙ 1 INCH IRON PIPE FOUND
  - ⊗ 3/4 INCH IRON PIPE FOUND



A SURVEY OF A 28.141 ACRE TRACT  
 PART OF THE FED TWO, INC.  
 26.475 ACRE TRACT  
 OFFICIAL RECORD 419, PAGE 945 EXHIBIT "C" (LOGAN COUNTY)  
 ALL OF THE FED TWO, INC.  
 5.938 ACRE TRACT  
 OFFICIAL RECORD 931, PAGE 128 (LOGAN COUNTY)  
 AND ALL OF THE FED TWO, INC.  
 18.975 ACRE TRACT  
 OFFICIAL RECORD 399, PAGE 20 (LOGAN COUNTY)  
 OFFICIAL RECORD 162, PAGE 234 (UNION COUNTY)  
 VIRGINIA MILITARY SURVEY 4606 AND 12256  
 ZANE TOWNSHIP, LOGAN COUNTY  
 ALLEN TOWNSHIP, UNION COUNTY, OHIO

SURVEYED BY:  
*William K. Bruce*  
 WILLIAM K. BRUCE  
 PROFESSIONAL SURVEYOR 7437  
 JULY 17, 2014



COPYRIGHT 2014 BY:  
 LEE SURVEYING & MAPPING CO., INC.  
 117 North Madriver Street  
 BELLEFONTAINE, OHIO 43311  
 (937) 593-7335  
 WWW.LSMINC.US  
 surveys@lsminc.us

INDEXED ON MAP  
 2443 13P

**FLOOD ZONE NOTE:**  
 BY GRAPHIC PLOTTING ONLY, THE AREA SHOWN IS IN FLOOD ZONE "X" AS SHOWN ON FLOOD INSURANCE RATE MAP (FIRM) COMMUNITY PANEL NUMBER 39159C0218D WITH AN EFFECTIVE DATE OF DECEMBER 16, 2008. (UNION COUNTY)

2 WORKING DAYS  
**BEFORE YOU DIG**  
 CALL TOLL FREE 800-362-2764  
 OHIO UTILITY PROTECTION SERVICE

12-12-14

# Lee Surveying and Mapping Co., Inc.



Land Surveys • Topography • Subdivisions • Construction Layout

117 N. Madriver St.  
Bellefontaine OH 43311



Phone: (937) 593-7335  
Fax: (937) 593-7444  
surveys@lsminc.us

## FED TWO, INC. 15 FOOT WIDE SANITARY SEWER EASEMENT

Lying in Virginia Military Survey 4606, Zane Township, Logan County, Ohio.

Being a 15 foot wide sanitary sewer easement through the part of the Fed Two, Inc. 26.475 acre tract as deeded and described in Official Record 419, Page 945 Exhibit "C", the Fed Two, Inc. 5.938 acre tract as deeded and described in Official Record 931, Page 128 and the Fed Two Inc. 18.975 acre tract as deeded and described in Official Record 399, Page 20 of the Logan County Records of Deeds and being more particularly described as follows:

Commencing at a railroad spike found at the intersection of the north line of Virginia Military Survey 12256 and the center-line of County Highway 153 (60 feet wide).

THENCE, with the center-line of County Highway 153, S 81°-37'-09"W, a distance of 108.32 feet to a P.K. nail found.

THENCE, with the lines of the Raymond Bailey 4.000 acre tract (O.R. 711, Pg. 346) the following four courses:

N 30°-59'-50"W, a distance of 256.19 feet to a 1 inch iron pipe found.

N 60°-16'-56"E, a distance of 104.42 feet to a 1 inch iron pipe found.

N 30°-51'-32"W, a distance of 254.00 feet to a 1 inch iron pipe found.

S 59°-08'-28"W, a distance of 97.22 feet to a point at the TRUE POINT OF BEGINNING.

THENCE, with the center-line of this 15 foot wide easement the following two courses:

N 09°-15'-21"E, a distance of 25.05 feet to a sanitary lift station.

N 11°-17'-36"W, a distance of 572.20 feet to the terminus of this easement.

The sidelines of said easement to be shortened or prolonged to meet at angle point intersections.

Property is subject to any and all previous easements and rights-of-way of record.

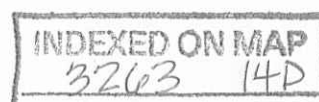
The basis for bearings is the center-line of Stokes Road, being S 59°-26'-00"W, and all other bearings are from angles and distances measured in a field survey by Lee Surveying and Mapping Co., Inc. on December 8, 2014.



Description prepared by:

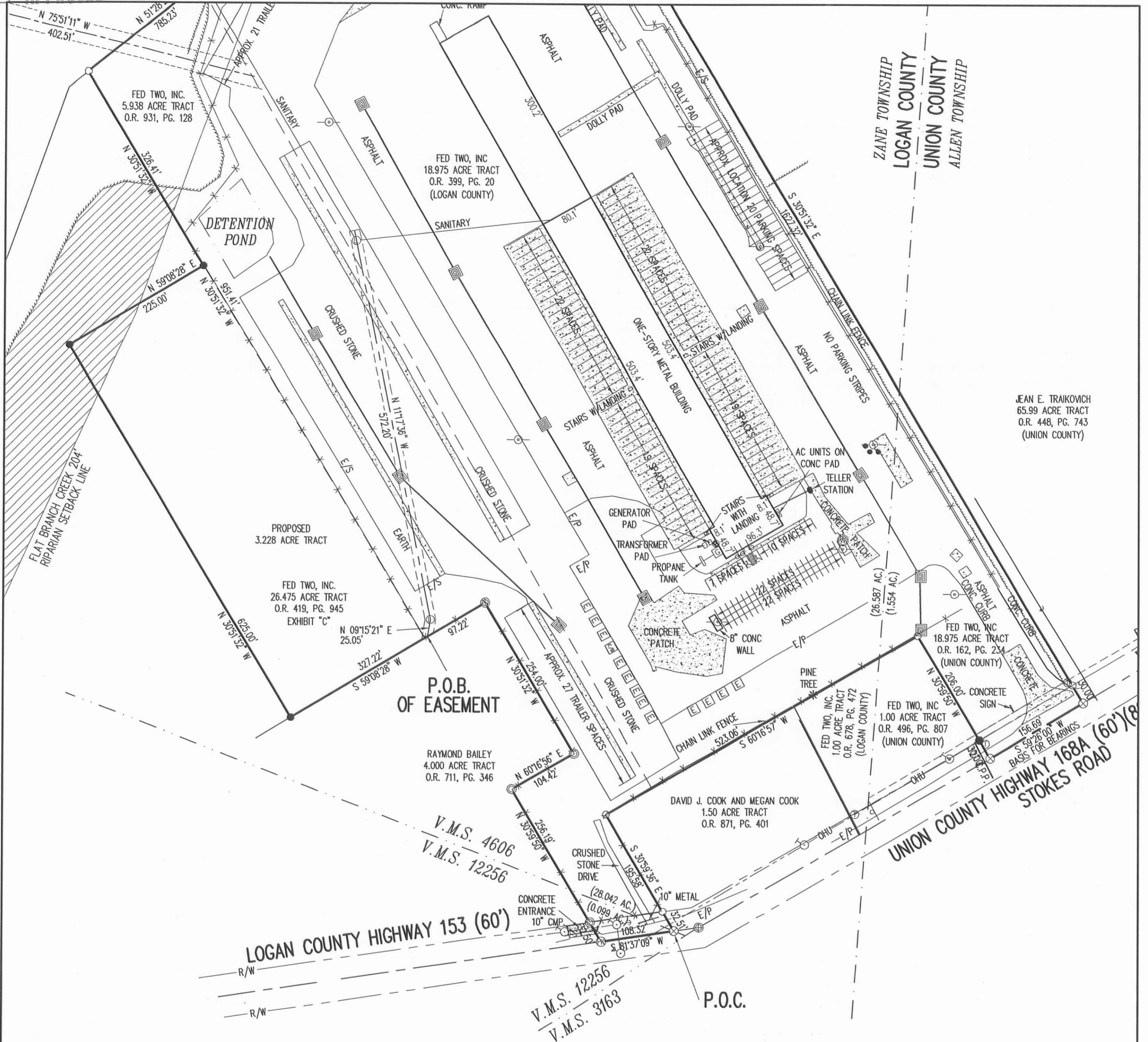
*William K. Bruce*  
William K. Bruce  
Professional Surveyor 7437  
December 8, 2014

27061212





APPROVED



ZANE TOWNSHIP  
 LOGAN COUNTY  
 UNION COUNTY  
 ALLEN TOWNSHIP

JEAN E. TRAIKOVICH  
 65.99 ACRE TRACT  
 O.R. 448, PG. 743  
 (UNION COUNTY)

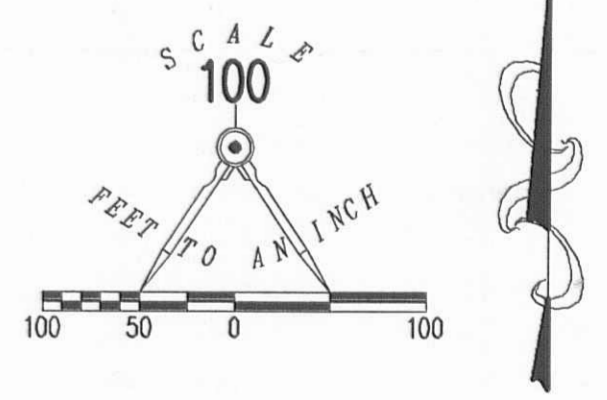
P.O.B.  
 OF EASEMENT

P.O.C.

LEGEND

- 5/8 INCH IRON ROD SET WITH PLASTIC I.D. CAP STAMPED "LSM7437"
- 5/8 INCH IRON ROD FOUND
- ⊗ P.K. NAIL FOUND
- ⊗ RAILROAD SPIKE FOUND
- ⊙ 1 INCH IRON PIPE FOUND
- ⊕ 3/4 INCH IRON PIPE FOUND
- ⊠ CATCH BASIN
- BOLLARD
- ⊕ LIFT STATION

A 15 FOOT SANITARY SEWER EASEMENT THROUGH THE  
 PART OF THE FED TWO, INC.  
 26.475 ACRE TRACT  
 OFFICIAL RECORD 419, PAGE 945 EXHIBIT "C"  
 THE FED TWO, INC.  
 5.938 ACRE TRACT  
 OFFICIAL RECORD 931, PAGE 128  
 AND THE FED TWO, INC.  
 18.975 ACRE TRACT  
 OFFICIAL RECORD 399, PAGE 20  
 VIRGINIA MILITARY SURVEY 4606  
 ZANE TOWNSHIP, LOGAN COUNTY



SURVEYED BY:

*William K. Bruce*  
 WILLIAM K. BRUCE  
 PROFESSIONAL SURVEYOR 7437  
 DECEMBER 8, 2014



COPYRIGHT 2014 BY:  
**LEE SURVEYING & MAPPING CO.**  
 117 North Madriver Street, INC.  
 BELLEFONTAINE, OHIO 43311  
 (937) 593-7335  
 WWW.LSMINC.US  
 surveys@lsminc.us  
 ADW D1214 27061212 L-2706-2

2 WORKING DAYS  
**BEFORE YOU DIG**  
 CALL TOLL FREE 800-362-2764  
 OHIO UTILITIES PROTECTION SERVICE

INDEXED ON MAP  
 3263 14P

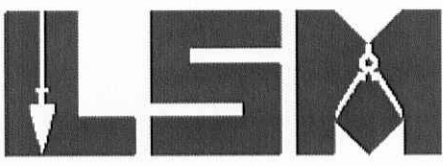
12-16-14

# Lee Surveying and Mapping Co., Inc.



Land Surveys • Topography • Subdivisions • Construction Layout

117 N. Madriver St.  
Bellefontaine OH 43311



Phone: (937) 593-7335  
Fax: (937) 593-7444  
surveys@lsminc.us

## FED TWO, INC. 30 FOOT WIDE SANITARY SEWER EASEMENT

Lying in Virginia Military Survey 4606, Zane Township, Logan County, Ohio.

Being a 30 foot wide sanitary sewer easement through the Fed Two, Inc. 5.938 acre tract as deeded and described in Official Record 931, Page 128 of the Logan County Records of Deeds and being more particularly described as follows:

Commencing at a railroad spike found at the intersection of the north line of Virginia Military Survey 12256 and the center-line of County Highway 153 (60 feet wide).

THENCE, with the center-line of County Highway 153, S 81°-37'-09"W, a distance of 108.32 feet to a P.K. nail found.

THENCE, with the lines of the Raymond Bailey 4.000 acre tract (O.R. 711, Pg. 346) the following four courses:

N 30°-59'-50"W, a distance of 256.19 feet to a 1 inch iron pipe found.

N 60°-16'-56"E, a distance of 104.42 feet to a 1 inch iron pipe found.

N 30°-51'-32"W, a distance of 254.00 feet to a 1 inch iron pipe found.

S 59°-08'-28"W, a distance of 102.22 feet to a point.

THENCE, with the west line of the aforesaid 5.938 acre tract, N 30°-51'-32"W, a distance of 657.61 feet to a point at the TRUE POINT OF BEGINNING, passing a 5/8 inch iron rod set at 625.00 feet.

THENCE, with the center-line of a 30 feet wide sanitary sewer easement, N 03°-28'-23"W, a distance of 256.71 feet to a point at the terminus of this easement.

The sidelines of said easement to be shortened or prolonged to meet at angle point intersections.

Property is subject to any and all previous easements and rights-of-way of record.

The basis for bearings is the center-line of Stokes Road, being S 59°-26'-00"W, and all other bearings are from angles and distances measured in a field survey by Lee Surveying and Mapping Co., Inc. on December 8, 2014.

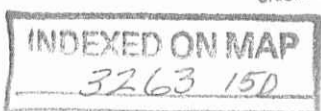
Description prepared by:

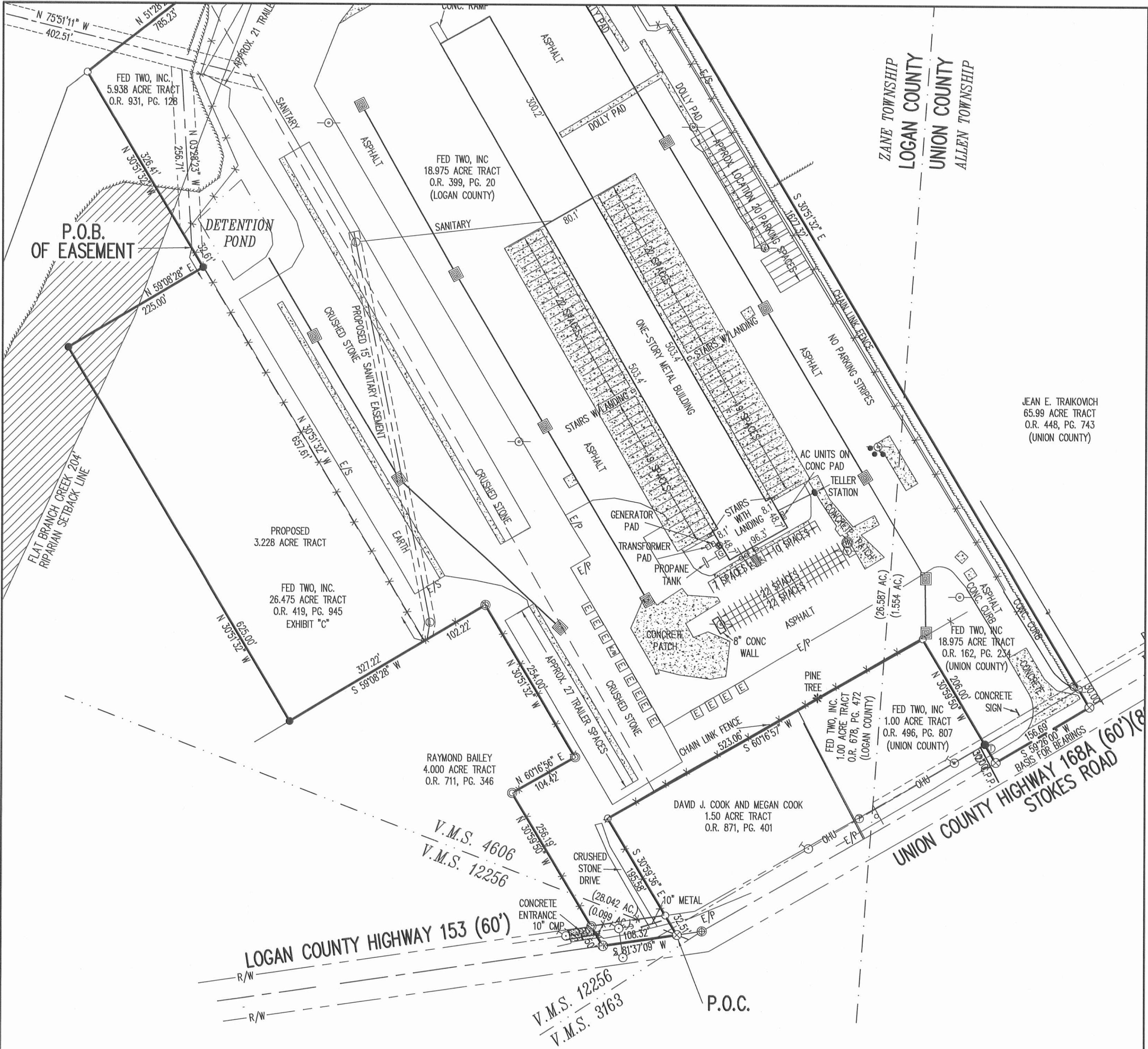
William K. Bruce  
Professional Surveyor 7437  
December 15, 2014



ORIGINAL STAMP IN GREEN

27061214-R



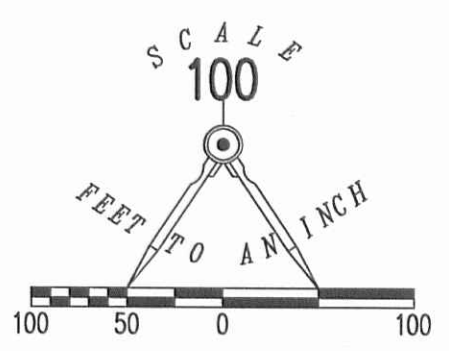


JEAN E. TRAIKOVICH  
 65.99 ACRE TRACT  
 O.R. 448, PG. 743  
 (UNION COUNTY)

ZANE TOWNSHIP  
 LOGAN COUNTY  
 UNION COUNTY  
 ALLEN TOWNSHIP

LEGEND

- 5/8 INCH IRON ROD SET WITH PLASTIC I.D. CAP STAMPED "LSM7437"
- 5/8 INCH IRON ROD FOUND
- ⊕ P.K. NAIL FOUND
- ⊗ RAILROAD SPIKE FOUND
- ⊙ 1 INCH IRON PIPE FOUND
- ⊕ 3/4 INCH IRON PIPE FOUND
- ⊠ CATCH BASIN
- BOLLARD
- ⊕ LIFT STATION



A 30 FOOT SANITARY SEWER EASEMENT THROUGH THE  
 THE FED TWO, INC.  
 5.938 ACRE TRACT  
 OFFICIAL RECORD 931, PAGE 128  
 VIRGINIA MILITARY SURVEY 4606  
 ZANE TOWNSHIP, LOGAN COUNTY, OHIO

SURVEYED BY:

*William K. Bruce*  
 WILLIAM K. BRUCE  
 PROFESSIONAL SURVEYOR 7437  
 DECEMBER 15, 2014



COPYRIGHT 2014 BY:  
**LEE SURVEYING & MAPPING CO**  
 117 North Madriver Street, INC.  
 BELLEFONTAINE, OHIO 43311  
 (937) 593-7335  
 WWW.LSMINC.US  
 surveys@lsminc.us  
 ADW D1214 27061214-R L-2706-2

2 WORKING DAYS  
**BEFORE YOU DIG**  
 CALL TOLL FREE 800-362-2764  
 OHIO UTILITIES PROTECTION SERVICE

INDEXED ON MAP  
 3263 15P

5-14-15

# Lee Surveying and Mapping Co., Inc.



117 N. Madriver St.  
Bellefontaine OH 43311

Land Surveys • Topography • Subdivisions • Construction Layout



Phone: (937) 593-7335  
Fax: (937) 593-7444  
surveys@lsminc.us

## FED TWO, INC. 13.308 ACRES

Lying in Virginia Military Surveys 4606 and 12256, Zane Township, Logan County, Ohio.

Being the remainder of the Fed Two, Inc. 26.475 acre tract as deeded and described in Official Record 419, Page 945 Exhibit "C" and being more particularly described as follows:

Commencing at a railroad spike found at the intersection of south line of Virginia Military Survey 4606 and the center-line of County Highway 153 (60 feet wide).

THENCE, with the center-line of County Highway 153 the following two courses:

S 81°-36'-09"W, a distance of 153.20 feet to a MAG nail found.

S 81°-37'-45"W, a distance of 320.83 feet to a P.K. nail set by Page Engineering at the TRUE POINT OF BEGINNING.

THENCE, with the center-line of County Highway 153 the following two courses:

S 81°-37'-45"W, a distance of 491.35 feet to a 3/4 inch iron rod found.

S 69°-08'-04"W, a distance of 158.51 feet to harrow tooth set.

THENCE, with the center-line of the Flat Branch Creek and the lines of the Nature Conservancy 145.41 acre tract (O.R. 426, Pg. 278) the following five courses:

N 26°-23'-50"W, a distance of 286.94 feet to a point, referenced by a 5/8 inch iron rod set that bears N 70°-26'-16"E, a distance of 28.78 feet.

N 03°-42'-39"W, a distance of 254.95 feet to a point.

N 19°-10'-32"E, a distance of 249.16 feet to a point, referenced by a 5/8 inch iron rod set that bears S 44°-31'-50"E, a distance of 25.55 feet.

N 24°-47'-33"E, a distance of 456.74 feet to a point, referenced by a 5/8 inch iron rod set at that bears S 62°-47'-34"E, a distance of 20.15 feet.

N 19°-53'-50"E, a distance of 266.55 feet to a point.

THENCE, with a line of the said 145.41 acre tract, N 51°-28'-28"E, a distance of 36.75 feet to a 5/8 inch iron rod set.

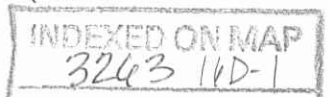
THENCE, with the lines of the ELO Real Estate Investments, LLC 28.141 acre tract (O.R. 1176, Pg. 485, Tract I) the following Three courses:

S 30°-51'-32"E, a distance of 326.41 feet to a 5/8 inch iron rod set.

S 59°-08'-28"W, a distance of 225.00 feet to a 5/8 inch iron rod set.

S 30°-51'-32"E, a distance of 625.00 feet to a 5/8 inch iron rod set.

THENCE, with the lines of the Raymond Bailey 4.000 acre tract (O.R. 711, Pg. 346) the following two courses:



# Lee Surveying and Mapping Co., Inc.

Land Surveys • Topography • Subdivisions • Construction Layout

117 N. Madriver St.  
Bellefontaine OH 43311



Phone: (937) 593-7335  
Fax: (937) 593-7444  
surveys@lsminc.us

S 59°-08'-28"W,  
feet to a 1 inch iron  
Engineering, Inc.

a distance of 114.47  
pipe set by Page

S 30°-51'-32"E, a distance of 368.25 feet to the point of beginning,  
passing a 1 inch iron pipe set by Page Engineering, Inc. at 335.78 feet.

Containing 13.308 acres of which 0.447 acre is within the highway right-of-way, 7.124 acres is within Virginia Military Survey 12256 and 6.184 acres is within Virginia Military Survey 4606.

Property is subject to any and all previous easements and rights-of-way of record.

The basis for bearings is the center-line of County Highway 153, being S 81°-37'-45"W, this is a survey from records, no field work was done at the time of this survey.

Records of surveys in Logan County Engineer's file R-3263

Survey of a 29.101 acre, 10.00 acre and 26.475 acre tract  
Lee Surveying and Mapping Co., Inc.  
Dated May 20, 1999

Survey of a 4.000 acre tract  
Page Engineering, Inc.  
Dated January 30, 2004

Survey of a 28.141 acre tract  
Lee Surveying and Mapping Co., Inc.  
Dated July 17, 2014



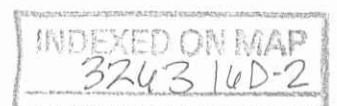
ORIGINAL STAMP IN GREEN

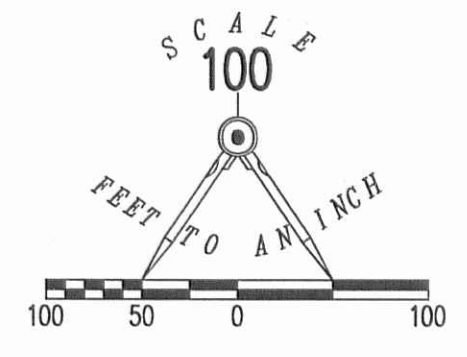
Description prepared by:

*William K. Bruce*

William K. Bruce  
Professional Surveyor 7437  
May 8, 2015

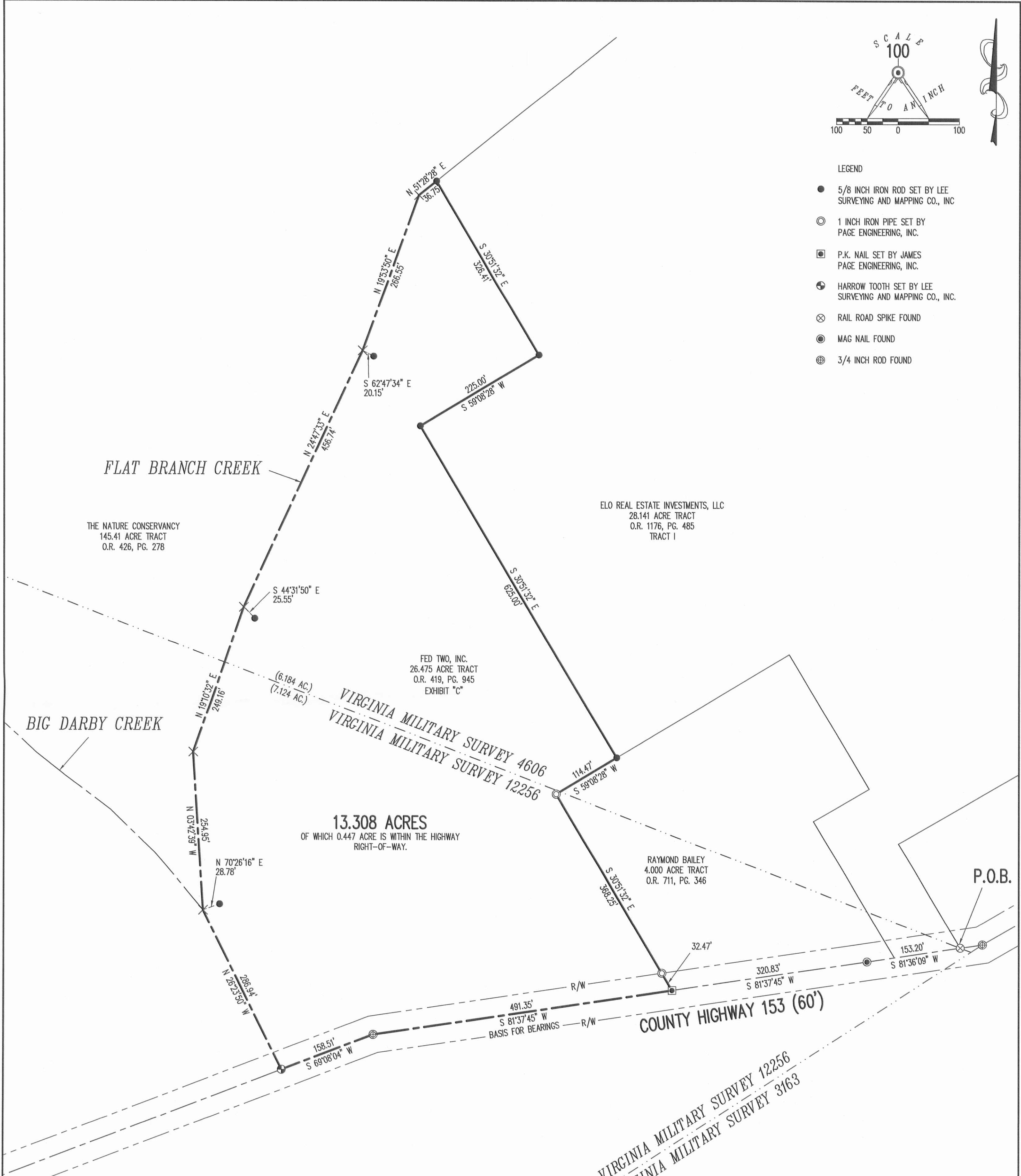
L-27060415





LEGEND

- 5/8 INCH IRON ROD SET BY LEE SURVEYING AND MAPPING CO., INC
- ⊙ 1 INCH IRON PIPE SET BY PAGE ENGINEERING, INC.
- ⊠ P.K. NAIL SET BY JAMES PAGE ENGINEERING, INC.
- ⊕ HARROW TOOTH SET BY LEE SURVEYING AND MAPPING CO., INC.
- ⊗ RAIL ROAD SPIKE FOUND
- ⊙ MAG NAIL FOUND
- ⊕ 3/4 INCH ROD FOUND



THE NATURE CONSERVANCY  
145.41 ACRE TRACT  
O.R. 426, PG. 278

ELO REAL ESTATE INVESTMENTS, LLC  
28.141 ACRE TRACT  
O.R. 1176, PG. 485  
TRACT I

FED TWO, INC.  
26.475 ACRE TRACT  
O.R. 419, PG. 945  
EXHIBIT "C"

RAYMOND BAILEY  
4.000 ACRE TRACT  
O.R. 711, PG. 346

13.308 ACRES  
OF WHICH 0.447 ACRE IS WITHIN THE HIGHWAY  
RIGHT-OF-WAY.

A SURVEY OF THE REMAINDER OF THE  
FED TWO, INC.  
26.475 ACRE TRACT  
OFFICIAL RECORD 419, PAGE 945, EXHIBIT "C"  
VIRGINIA MILITARY SURVEYS 4606 AND 12256  
ZANE TOWNSHIP  
LOGAN COUNTY, OHIO

REFERENCES:

- RECORDS OF SURVEYS IN LOGAN COUNTY ENGINEER'S FILE R-3263
- SURVEY OF A 29.101 ACRE, 10.000 ACRE AND 26.475 ACRE TRACTS  
LEE SURVEYING AND MAPPING CO., INC.  
DATED MAY 20, 1999.
- SURVEY OF A 4.000 ACRE TRACT  
PAGE ENGINEERING, INC.  
DATED JANUARY 30, 2004
- SURVEY OF A 28.141 ACRE TRACT  
LEE SURVEYING AND MAPPING CO., INC.  
DATED JULY 17, 2014

NOTE:  
THIS IS A SURVEY FROM RECORDS, NO FIELD WORK  
WAS DONE AT THE TIME OF THIS SURVEY

PREPARED BY:

*William K. Bruce*  
WILLIAM K. BRUCE  
PROFESSIONAL SURVEYOR 7437  
MAY 8, 2014



COPYRIGHT 2015 BY:  
LEE SURVEYING & MAPPING CO., INC.  
117 North Madriver Street  
BELLEFONTAINE, OHIO 43311  
(937) 593-7335  
WWW.LSMINC.US  
surveys@lsminc.us  
ADW D0415 27060415 L-2706-2

2 WORKING DAYS  
BEFORE YOU DIG  
CALL TOLL FREE 800-362-2764  
OHIO UTILITIES PROTECTION SERVICE

INDEXED ON MAP  
3263 16P

6-10-15

# Lee Surveying and Mapping Co., Inc.



Land Surveys • Topography • Subdivisions • Construction Layout

117 N. Madriver St.  
Bellefontaine OH 43311



Phone: (937) 593-7335  
Fax: (937) 593-7444  
surveys@lsminc.us

## FED TWO, INC. 10.014 ACRES

Lying in Virginia Military Surveys 4606 and 12256, Zane Township, Logan County, Ohio.

Being out of the remainder of the Fed Two, Inc. 26.475 acre tract as deeded and described in Official Record 419, Page 945 Exhibit "C" and being more particularly described as follows:

Commencing at a railroad spike found at the intersection of south line of Virginia Military Survey 4606 and County Highway 153 (60 feet wide).

THENCE, with the center-line of County Highway 153 the following two courses:

S 81°-36'-09"W, a distance of 153.20 feet to a MAG nail found.

S 81°-37'-45"W, a distance of 320.83 feet to a P.K. nail found at the TRUE POINT OF BEGINNING.

THENCE, with the center-line of County Highway 153 the following two courses:

S 81°-37'-45"W, a distance of 491.35 feet to a 3/4 inch iron rod found.

S 69°-08'-04"W, a distance of 158.51 feet to harrow tooth found

THENCE, with the center-line of the Flat Branch Creek and the lines of the Nature Conservancy 145.41 acre tract (O.R. 426, Pg. 278) the following three courses:

N 26°-23'-50"W, a distance of 286.94 feet to a point, referenced by a 5/8 inch iron rod found that bears N 70°-26'-16"E, a distance of 28.78 feet.

N 03°-42'-39"W, a distance of 254.95 feet to a point.

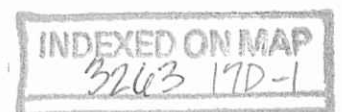
N 19°-10'-32"E, a distance of 249.16 feet to a point, referenced by a 5/8 inch iron rod found that bears S 44°-31'-50"E, a distance of 25.55 feet.

THENCE, N 81°-37'-42"E, a distance of 427.45 feet to a 5/8 inch iron rod set.

THENCE, with the west line of the ELO Real Estate Investments, LLC 28.141 acre tract (O.R. 1176, Pg. 485, Tract I) S 30°-51'-32"E, a distance of 356.69 feet to a 5/8 inch iron rod found.

THENCE, with the lines of the Raymond Bailey 4.000 acre tract (O.R. 711, Pg. 346) the following two courses:

S 59°-08'-28"W, a distance of 114.47 feet to a 1 inch iron pipe found.



# Lee Surveying and Mapping Co., Inc.

Land Surveys • Topography • Subdivisions • Construction Layout

117 N. Madriver St.  
Bellefontaine OH 43311



Phone: (937) 593-7335  
Fax: (937) 593-7444  
surveys@lsminc.us

S 30°-51'-32"E, a distance of 368.25 feet to the point of beginning,  
passing a 1 inch iron pipe found at 335.78 feet.

Containing 10.014 acres of which 0.447 acre is within the highway right-  
of-way, 7.124 acres is within Virginia Military Survey 12256 and 2.890 acres is  
within Virginia Military Survey 4606.

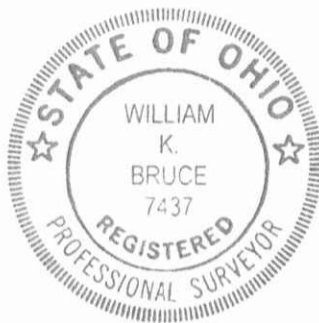
Property is subject to any and all previous easements and rights-of-way of  
record.

The basis for bearings is the center-line of County Highway 153, being  
S 81°-37'-45"W, all other bearings are from angles and distances measured in a  
field survey by Lee Surveying and Mapping Co., Inc. on June 4, 2015.

Description prepared by:

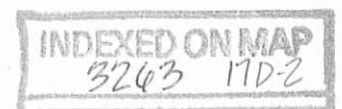
A handwritten signature in black ink that reads "William K. Bruce".

William K. Bruce  
Professional Surveyor 7437  
May 8, 2015  
Revised June 4, 2015



ORIGINAL STAMP IN GREEN

L-27060415A





6-10-15

# Lee Surveying and Mapping Co., Inc.



Land Surveys • Topography • Subdivisions • Construction Layout

117 N. Madriver St.  
Bellefontaine OH 43311



Phone: (937) 593-7335  
Fax: (937) 593-7444  
surveys@lsminc.us

## FED TWO, INC. 3.294 ACRES

Lying in Virginia Military Survey 4606, Zane Township, Logan County, Ohio.

Being out of the remainder of the Fed Two, Inc. 26.475 acre tract as deeded and described in Official Record 419, Page 945 Exhibit "C" and being more particularly described as follows:

Commencing at a railroad spike found at the intersection of south line of Virginia Military Survey 4606 and in the center-line of County Highway 153 (60 feet wide).

THENCE, with the center-line of County Highway 153 the following two courses:

S 81°-36'-09"W, a distance of 153.20 feet to a MAG nail found.

S 81°-37'-45"W, a distance of 320.83 feet to a P.K. nail found.

THENCE, with the Raymond Bailey 4.000 acre tract (O.R. 711, Pg. 346), the following two courses:

N 30°-51'-32"W, a distance of 368.25 feet to a 1 inch iron pipe found, passing a 1 inch iron pipe found at 32.47 feet.

N 59°-08'-28"E, a distance of 114.47 feet to a 5/8 inch iron rod found.

THENCE, with the west line of the ELO Real Estate Investments, LLC 28.141 acre tract (O.R. 1176, Pg. 485, Tract I), N 30°-51'-32"W, a distance of 356.69 feet to a 5/8 inch iron rod found at the TRUE POINT OF BEGINNING.

THENCE, S 81°-37'-42"W, a distance of 427.45 feet to a point, referenced by a 5/8 inch iron rod found that bears S 44°-31'-50"E, a distance of 25.55 feet.

THENCE, with the centerline of the Flat Branch Creek and the lines of the Nature Conservancy 145.41 acre tract (O.R. 426, Pg. 278) the following two courses:

N 24°-47'-33"E, a distance of 456.74 feet to a point, referenced by a 5/8 inch iron rod found that bears S 62°-47'-33"E, a distance 20.15 feet.

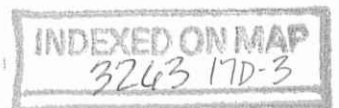
N 19°-53'-50"E, a distance of 266.55 feet to a point.

THENCE, with the line of the said 145.41 acre tract, N 51°-28'-28"E, a distance of 36.75 feet to a 5/8 inch iron rod found.

THENCE, with the lines of the ELO real Estate Investments, LLC 28.141 acre tract (O.R. 1176, Pg. 485, Tract I) the following three courses:

S 30°-51'-32"E, a distance of 326.41 feet to a 5/8 inch iron rod found.

S 59°-08'-28"W, a distance of 225.00 feet to a 5/8 inch iron rod found.



# Lee Surveying and Mapping Co., Inc.

Land Surveys • Topography • Subdivisions • Construction Layout

117 N. Madriver St.  
Bellefontaine OH 43311



Phone: (937) 593-7335  
Fax: (937) 593-7444  
surveys@lsminc.us

S 30°-51'-32"E, a distance of 268.31 feet to the point of beginning.

Containing 3.294 acres.

This parcel is to be attached to an adjoining tract of land and is not to be used as a separate and independent parcel.

Property is subject to any and all previous easements and rights-of-way of record.

The basis for bearings is the center-line of County Highway 153, being S 81°-37'-45"W, all other bearings are from angles and distances measured in a field survey by Lee Surveying and Mapping Co., Inc. on June 4, 2015

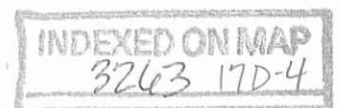
Description prepared by:

A handwritten signature in black ink that reads 'William K. Bruce'.

William K. Bruce  
Professional Surveyor 7437  
May 8, 2015  
Revised June 4, 2015

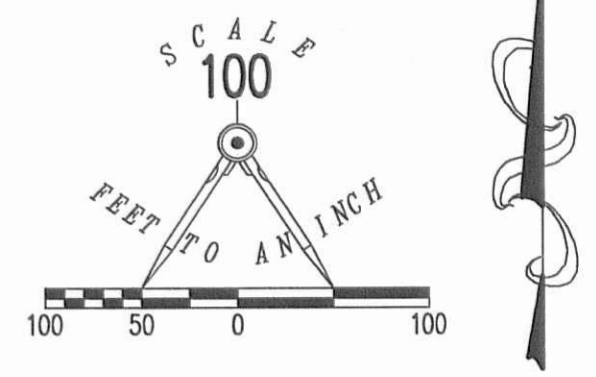


L-27060415A

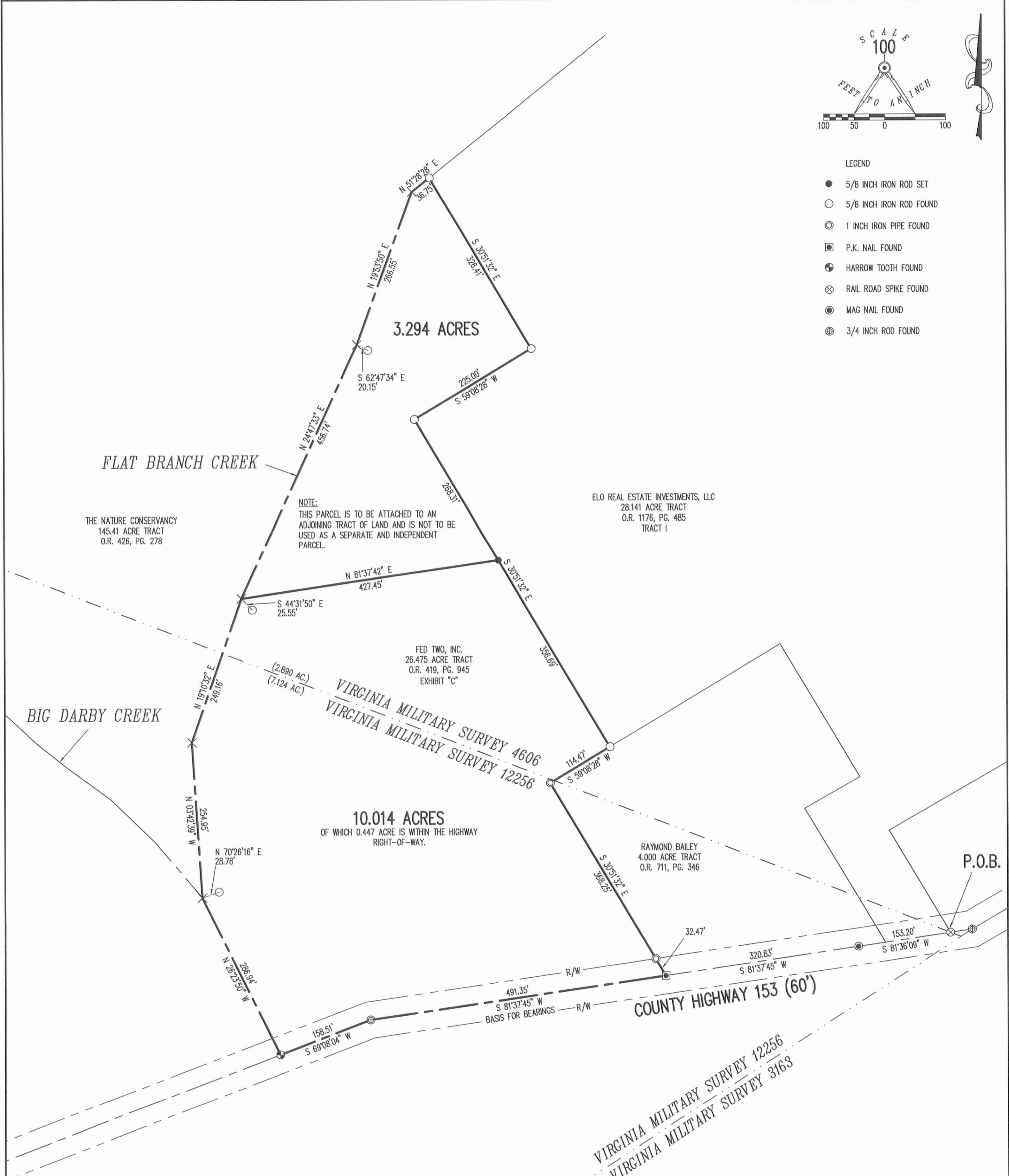


6-10-15

APPROVED



- LEGEND
- 5/8 INCH IRON ROD SET
  - 5/8 INCH IRON ROD FOUND
  - ⊙ 1 INCH IRON PIPE FOUND
  - P.K. NAIL FOUND
  - ⊕ HARROW TOOTH FOUND
  - ⊗ RAIL ROAD SPIKE FOUND
  - ⊙ MAG NAIL FOUND
  - ⊕ 3/4 INCH ROD FOUND



A SURVEY OF 2 TRACTS OUT OF THE REMAINDER OF THE  
FED TWO, INC.  
26.475 ACRE TRACT  
OFFICIAL RECORD 419, PAGE 945, EXHIBIT "C"  
VIRGINIA MILITARY SURVEYS 4606 AND 12256  
ZANE TOWNSHIP  
LOGAN COUNTY, OHIO

- REFERENCES:
- RECORDS OF SURVEYS IN LOGAN COUNTY ENGINEER'S FILE R-3263
  - SURVEY OF A 29.101 ACRE, 10.000 ACRE AND 26.475 ACRE TRACTS  
LEE SURVEYING AND MAPPING CO., INC.  
DATED MAY 20, 1999.
  - SURVEY OF A 4.000 ACRE TRACT  
PAGE ENGINEERING, INC.  
DATED JANUARY 30, 2004
  - SURVEY OF A 28.141 ACRE TRACT  
LEE SURVEYING AND MAPPING CO., INC.  
DATED JULY 17, 2014

PREPARED BY:

*William K. Bruce*

WILLIAM K. BRUCE  
PROFESSIONAL SURVEYOR 7437  
MAY 8, 2015  
REVISED JUNE 4, 2015



COPYRIGHT 2015 BY:  
LEE SURVEYING & MAPPING CO., INC.  
117 North Madriver Street  
BELLEFONTAINE, OHIO 43311  
(937) 593-7335  
WWW.LSMINC.US  
surveys@lsminc.us

ADW D0415 27060415AR L-2706-2

2 WORKING DAYS  
BEFORE YOU DIG

CALL TOLL FREE 800-362-2764

OHIO UTILITIES PROTECTION SERVICE

INDEXED ON MAP  
3263 17P