

DEED 4-19-06 SUMMIT

Lee Surveying and Mapping Co., Inc.

Land Surveys • Topography • Subdivisions • Construction Layout

117 N. Madriver St.
Bellefontaine OH 43311



Phone: (937) 593-7335
Fax: (937) 593-7444

1975-2005 - 30 YEARS OF EXCELLENCE

**CURRENT
3.791 ACRES
TRACT A**

Lying in Virginia Military Survey 3154, Zane Township, Logan County, Ohio.

Being out of the Roy Leon Current and LaNora Current 7.75 acre tract as deeded and described in Official Record 540, Page 552 of the Logan County Records of Deeds and being more particularly described as follows:

Beginning at a 1 inch square iron bolt found on the southeasterly line of Virginia Military Survey 3154 and on the center-line of County Highway 152.

THENCE, with the center-line of County Highway 152 (50 feet wide), N 30°-25'-00"W, a distance of 1726.69 feet to a MAG nail set at the TRUE POINT OF BEGINNING, passing a MAG nail set over a railroad spike found at 1396.50 feet.

THENCE, S 54°-47'-28"W, a distance of 501.63 feet to a 5/8 inch iron rod set, passing a 5/8 inch iron rod set at 25.09 feet.

THENCE, with the northeasterly line of the Frederick T. Deardurff 18.069 acre tract (O.R. 457, Pg. 364), N 30°-20'-09"W, a distance of 329.77 feet to a stone found.

THENCE, with the southeasterly lines of the Carol W. Losey original 40.17 acre tract (Vol. 390, Pg. 696, Tract II) and the James B. Warren 4.43 acre tract (O.R. 76, Pg. 285, Tract I), N 54°-37'-02"E, a distance of 501.29 feet to a MAG nail set over a railroad spike found on the center-line of County Highway 152, passing a 5/8 inch iron rod found at 476.01 feet.

THENCE, with the center-line of County Highway 152, S 30°-25'-00"E, a distance of 331.26 feet to the point of beginning.

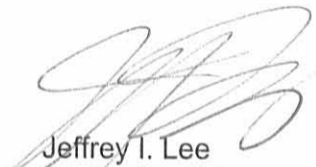
Containing 3.791 acres, of which 0.190 acre is within the highway right-of-way.

The basis for bearings is the center-line of County Highway 152 at the southeasterly line of Virginia Military Survey 3154, being N 30°-25'-00"W, and all other bearings are from angles and distances measured in a field survey by Lee Surveying and Mapping Co., Inc. on April 12, 2006.

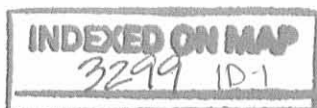


ORIGINAL STAMP IN GREEN

Description prepared by:


Jeffrey I. Lee
Professional Surveyor 6359
April 13, 2006

2531036



REC'D 4-19-06 SML/OK
Lee Surveying and Mapping Co., Inc.

Land Surveys • Topography • Subdivisions • Construction Layout

117 N. Madriver St.
Bellefontaine OH 43311



Phone: (937) 593-7335
Fax: (937) 593-7444

1975-2005 - 30 YEARS OF EXCELLENCE

**CURRENT
3.791 ACRES
TRACT B**

Lying in Virginia Military Survey 3154, Zane Township, Logan County, Ohio.

Being out of the Roy Leon Current and LaNora Current 7.75 acre tract as deeded and described in Official Record 540, Page 552 of the Logan County Records of Deeds and being more particularly described as follows:

Beginning at a 1 inch square iron bolt found on the southeasterly line of Virginia Military Survey 3154 and on the center-line of County Highway 152.

THENCE, with the center-line of County Highway 152 (50 feet wide), N 30°-25'-00"W, a distance of 1396.50 feet to a MAG nail set over a railroad spike found at the TRUE POINT OF BEGINNING.

THENCE, with the northwesterly lines of the Frederick T. Deardurff 2.914 acre tract (O.R. 303, Pg. 782) and the Frederick T. Deardurff 18.069 acre tract (O.R. 457, Pg. 364), S 54°-47'-28"W, a distance of 502.09 feet to a 10 inch wood corner post found, passing a 5/8 inch iron rod found at 25.40 feet and a 5/8 inch iron rod set at 500.09 feet.

THENCE, with the northeasterly line of the said 18.069 acre tract, N 30°-20'-09"W, a distance of 330.23 feet to a 5/8 inch iron rod set, passing a 5/8 inch iron rod set at 2.00 feet.

THENCE, N 54°-47'-28"E, a distance of 501.63 feet to a MAG nail set on the center-line of County Highway 152, passing a 5/8 inch iron rod set at 476.54 feet.

THENCE, with the center-line of County Highway 152, S 30°-25'-00"E, a distance of 330.19 feet to the point of beginning.

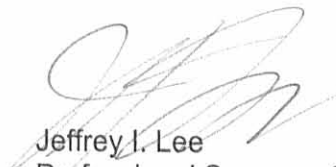
Containing 3.791 acres, of which 0.190 acre is within the highway right-of-way.

The basis for bearings is the center-line of County Highway 152 at the southeasterly line of Virginia Military Survey 3154, being N 30°-25'-00"W, and all other bearings are from angles and distances measured in a field survey by Lee Surveying and Mapping Co., Inc. on April 12, 2006.

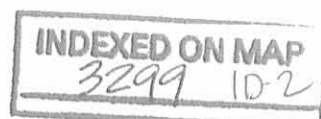


ORIGINAL STAMP IN GREEN

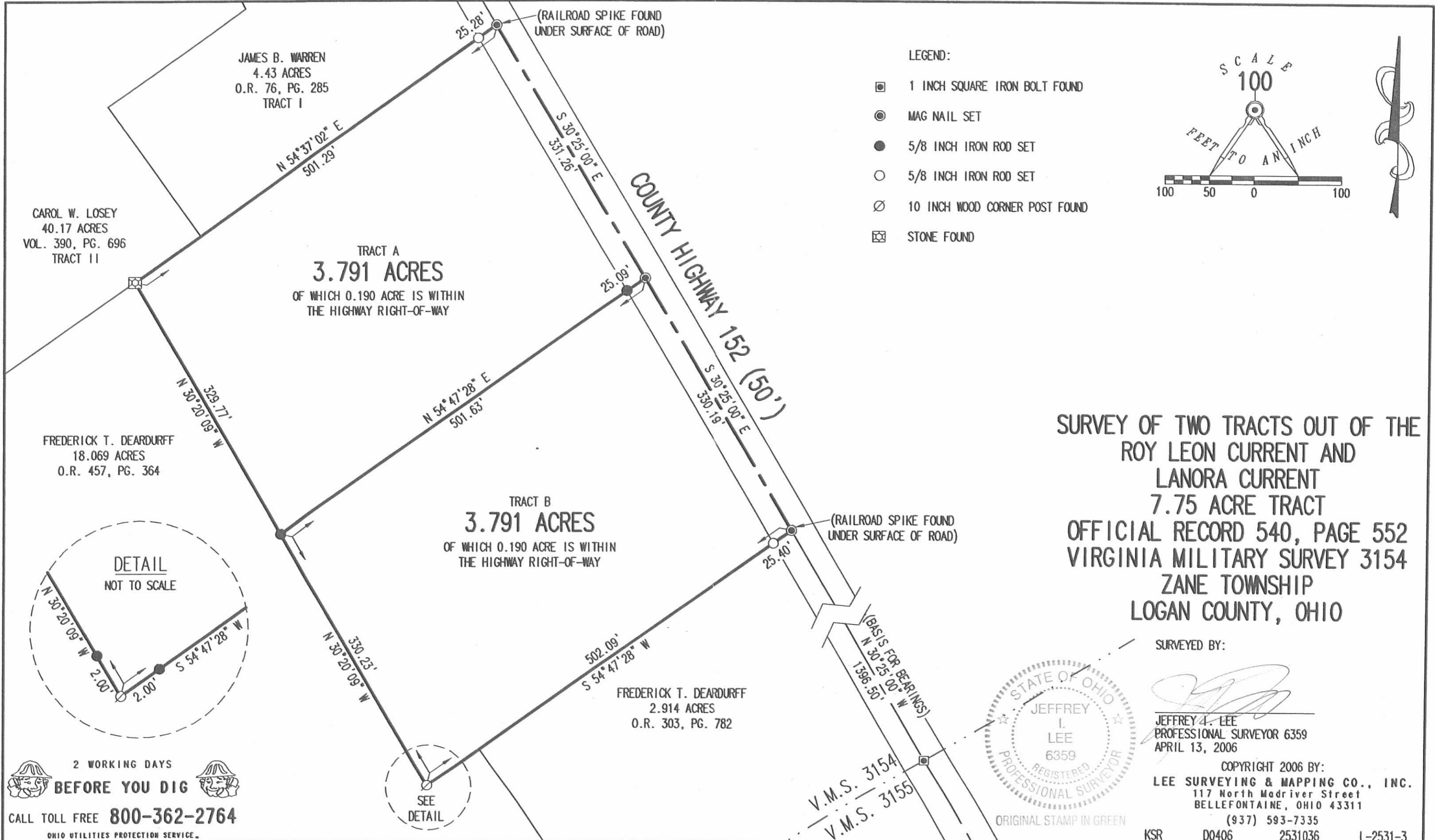
Description prepared by:


Jeffrey I. Lee
Professional Surveyor 6359
April 13, 2006

2531036

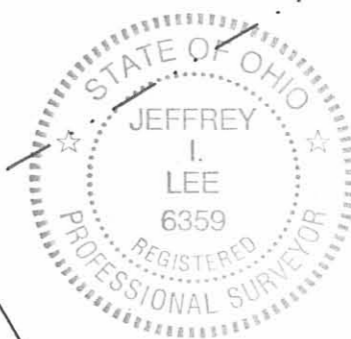


REC'D 4-19-06 SURV OK



SURVEY OF TWO TRACTS OUT OF THE ROY LEON CURRENT AND LANORA CURRENT 7.75 ACRE TRACT OFFICIAL RECORD 540, PAGE 552 VIRGINIA MILITARY SURVEY 3154 ZANE TOWNSHIP LOGAN COUNTY, OHIO

SURVEYED BY:
[Signature]
JEFFREY I. LEE
PROFESSIONAL SURVEYOR 6359
APRIL 13, 2006



COPYRIGHT 2006 BY:
LEE SURVEYING & MAPPING CO., INC.
117 North Madriver Street
BELLEFONTAINE, OHIO 43311
(937) 593-7335
KSR D0406 2531036 L-2531-3

2 WORKING DAYS BEFORE YOU DIG
CALL TOLL FREE **800-362-2764**
OHIO UTILITIES PROTECTION SERVICE.

INDEXED ON MAP
3299 IP

REC'D 5-29-97 slg OK



Lee Surveying and Mapping Co., Inc.



Farm Surveys • Lot Surveys • Topography • Subdivisions • Construction Layout

117 NORTH MADRIVER STREET
BELLEFONTAINE, OHIO 43311

(937) 593-7335
FAX (937) 593-7444

CURRENT 2.298 ACRES

Lying in Virginia Military Survey 3154, Zane Township, Logan County, Ohio.

Being out of the Roy Leon Current and LaNora Elizabeth Marie Current original 7.75 acre tract as deeded and described in Official Record 273, Page 463 of the Logan County Records of Deeds and being more particularly described as follows:

Beginning at a 1 inch bolt found on the center-line of County Highway 152 at Station 54+00 as shown in the Logan County Engineer's Field Book 555, Page 20.

THENCE, with the center-line of County Highway 152 (60 feet wide), S 30°-25'-00" E, a distance of 225.20 feet to a railroad spike found at the TRUE POINT OF BEGINNING.

THENCE, with the center-line of County Highway, S 30°-25'-00" E, a distance of 318.00 feet to a railroad spike set.

THENCE, S 57°-27'-45" W, a distance of 172.83 feet to a 5/8 inch iron rod set, passing a 5/8 inch iron rod set at 25.02 feet.

THENCE, S 86°-38'-16" W, a distance of 201.99 feet to a 5/8 inch iron rod set.

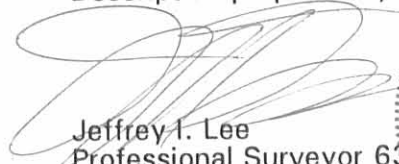
THENCE, N 30°-25'-00" W, a distance of 201.47 feet to a 5/8 inch iron rod set.

THENCE, with the southerly line of the James B. Warren 4.43 acre tract (O.R. 76, Pg. 285), N 54°-33'-00" E, a distance of 353.97 feet to the point of beginning, passing a 5/8 inch iron rod set at 328.87 feet.

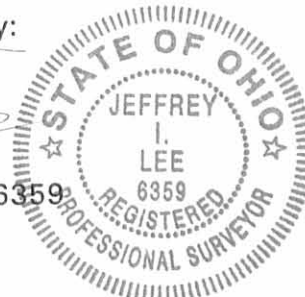
Containing 2.298 acre of which 0.182 acre is within the highway right-of-way.

The basis for bearings is the center-line of County Highway 152 being S 30°-25'-00" E, and all other bearings are from angles and distances measured in a field survey by Lee Surveying and Mapping Co., Inc. on May 23, 1997

Description prepared by:



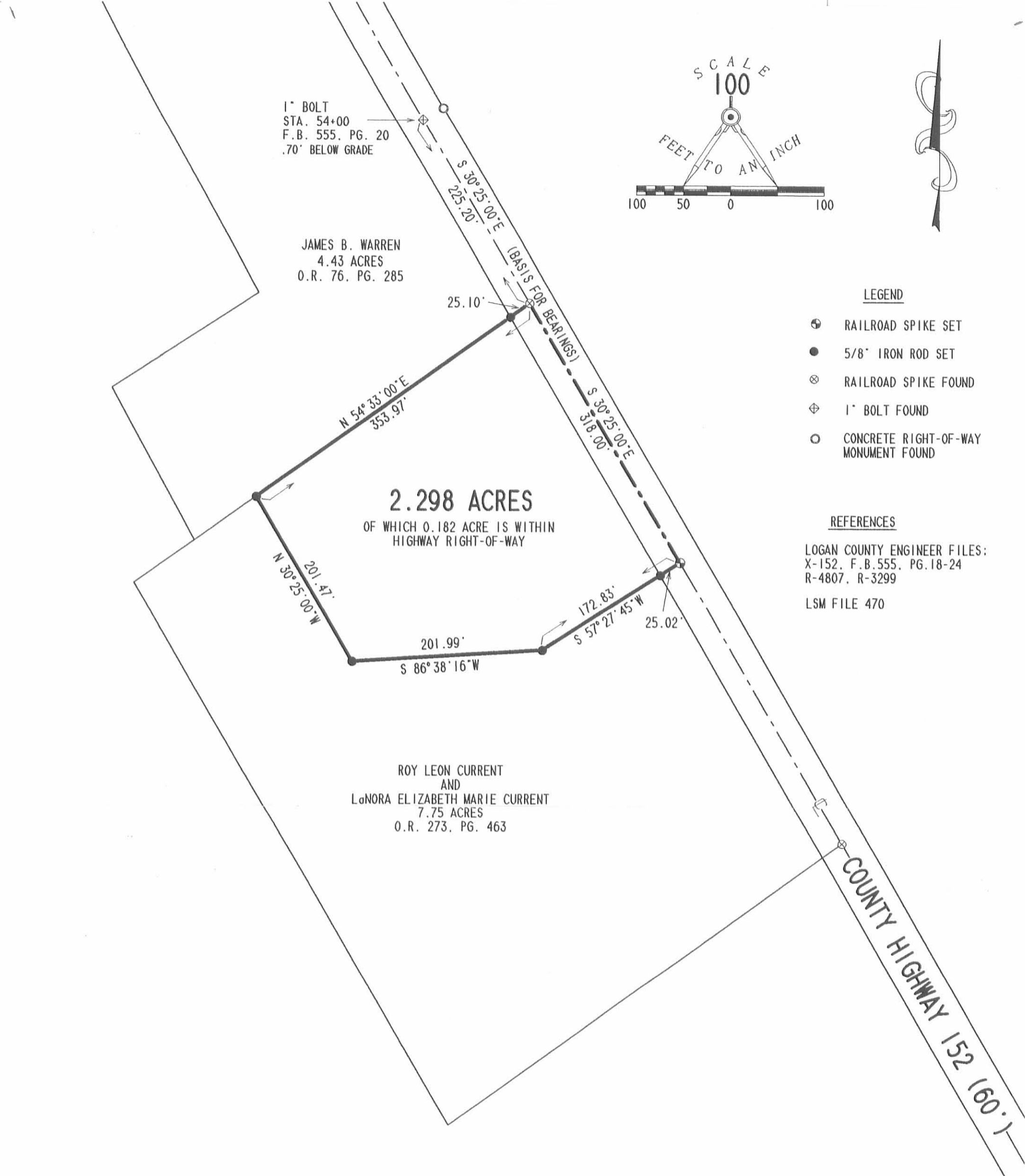
Jeffrey I. Lee
Professional Surveyor 6359
May 29, 1997



L 2531

ORIGINAL STAMP IN GREEN

INDEXED ON MAP
3299 2D



SURVEY OF 2.298 ACRES OUT OF THE
ROY LEON CURRENT AND LONORA ELIZABETH MARIE CURRENT
ORIGINAL 7.75 ACRE TRACT
OFFICIAL RECORD 273, PAGE 463
VIRGINIA MILITARY SURVEY 3154
ZANE TOWNSHIP
LOGAN COUNTY, OHIO

SURVEYED BY:

JEFFREY I. LEE
PROFESSIONAL SURVEYOR 6359
MAY 23, 1997



ORIGINAL STAMP IN GREEN

COPYRIGHT 1997 BY:
LEE SURVEYING & MAPPING CO., INC.
117 North Madriver Street
BELLEFONTAINE, OHIO 43311
(937) 593-7335

2 WORKING DAYS
BEFORE YOU DIG
CALL TOLL FREE 800-362-2764
OHIO UTILITIES PROTECTION SERVICE.

INDEXED ON MAP
3299 2P

D313

ROYCURNT

L-2531

Bishop Survey Zane Township

V.M.S. 3154

March 1955

4.43 Acres

The following described land in Zane Township, Logan County Ohio and being in V.M.S. 3154

Being 4.43 acres ~~off of the east end of the present~~ 44.60 acre tract and being more fully described as follows :

Beginning at an iron in the center of County Road Number 152 known as the East Liberty and Middleburg Pike at the S.E. corner of an old cemetery known as the Darby Creek Cemetery thence with the south side of said Cemetery S. 55 - 24 W. 214.0 feet to a stake thence S. 28 - 42 E. 517.0 feet to a stake thence S. 56 - 52 W. 184.5 feet to a stake near the west end of a concrete garage thence S. 28 - 38 E. 183.5 feet to a stake in the north line of Robert Heath's 7.70 acre tract thence with the north line of said Heath land N. 54 - 33 E. 433.5 feet to an iron in the center of said County Road Number 152 and being station 51 plus 75 of the survey of Road Number 152 as shown in Logan County Engineer's Book 555 page 19 thence with the center of County Road Number 152 N. 30 - 25 W. 225.0 feet to an iron thence again with the center of County Road Number 152 N. 32 - 06 W. 461.0 feet to the place of beginning said tract containing 4.43 acres.

cc
Carl Keysor,
Logan County Deputy Engineer

INDEXED ON MAP
3299 3D

