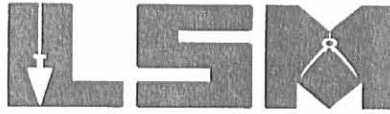


Lee Surveying and Mapping Co., Inc.

Land Surveys • Topography • Subdivisions • Construction Layout



117 N. Madriver St.
Bellefontaine OH 43311

Phone: (937) 593-7335
Fax: (937) 593-7444

1975-2005 - 30 YEARS OF EXCELLENCE

**WELTY
109.633 ACRES**

Lying in Virginia Military Survey 5049, Zane Township, Logan County and Wayne Township, Champaign County, Ohio.

Being out of the Betty Jo Welty and John Welty 113.526 acre tract as deeded and described in Official Record 589, Page 883 of the Logan County Records of Deeds and Official Record 401, Page 2570 of the Champaign County Records of Deeds and being more particularly described as follows:

Beginning at a 3/4 inch iron rod found on the center-line of Logan County Highway 15 and Champaign County Township Road 146 (Johnson Road) at the intersection with the south line of Logan County and the north line of Champaign County.

THENCE, with the center-line of Champaign County Township Road 146 (60 feet wide), the following two courses:

S 16°-21'-29"E, a distance of 339.07 feet to a 5/8 inch iron rod set on the north line of Virginia Military Survey 5049.

S 15°-32'-36"E, a distance of 232.00 feet to a 5/8 inch iron rod set at the TRUE POINT OF BEGINNING.

THENCE, N 64°-36'-20"E, a distance of 628.14 feet to a 3/4 inch iron rod found, passing a 5/8 inch iron rod set at 30.45 feet.

THENCE, with the lines of the Eric M. Svenson 1.719 acre tract (Logan County O.R. 261, Pg. 132, Champaign County O.R. 64, Pg. 116), the following two courses:

N 80°-42'-17"E, a distance of 188.57 feet to a 5/8 inch iron rod set.

N 13°-25'-11"W, a distance of 402.92 feet to a railroad spike set on the north line of Virginia Military Survey 5049 and the center-line of Logan County Highway 44, passing a 5/8 inch iron rod found at 371.09 feet.

THENCE, with the north line of Virginia Military Survey 5049 and the center-line of Logan County Highway 44 (60 feet wide), N 57°-02'-33"E, a distance of 1440.97 feet to a 3/4 inch iron rod found.

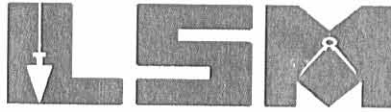
THENCE, with the west line of the Frank M. Slemmons 20.17 acre tract (Logan County O.R. 189, Pg. 444, Tract V, Parcel Four and Champaign County O.R. 110, Pg. 88, Tract V, Parcel Four), S 32°-45'-00"E, a distance of 1929.04 feet to a 5/8 inch iron rod found, passing a 5/8 inch iron rod found at 30.00 feet.

THENCE, with the north lines of the Frank M. Slemmons 39.43 acre tract (Champaign County O.R. 110, Pg. 88, Tract X), the Virginia K. Reid original 34.000 acre tract (Champaign County O.R. 444, Pg. 1398, Tract Two, Parcel Two) and the Mary Diane Diehl 7.451 acre tract and 1.000 acre tract (Champaign County O.R. 235, Pg. 199 and O.R. 42, Pg. 330), S 57°-03'-02"W, a distance of 2898.32

Lee Surveying and Mapping Co., Inc.

Land Surveys • Topography • Subdivisions • Construction Layout

117 N. Madriver St.
Bellefontaine OH 43311



Phone: (937) 593-7335
Fax: (937) 593-7444

1975-2005 - 30 YEARS OF EXCELLENCE

feet to a 5/8 inch iron rod found on the west line of Virginia Military Survey 5049 and on the center-line of Champaign County Township Road 146, passing a 5/8 inch iron rod found at 2866.98 feet.

THENCE, with the west line of Virginia Military Survey 5049 and on the center-line of Champaign County Township Road 146, the following two courses:

N 16°-06'-41"W, a distance of 123.02 feet to a 5/8 inch iron rod found.

N 15°-32'-36"W, a distance of 1665.86 feet to the point of beginning.

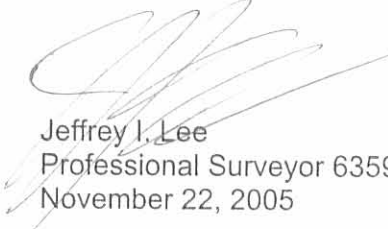
Containing 109.633 acres, of which there are 2.227 acres within the highway rights-of-way. There are 28.989 acres in Logan County, of which there is 0.996 acre within the highway right-of-way and 80.644 acres in Champaign County, of which there are 1.231 acres within the highway right-of-way.

The basis for bearings is the north line of Virginia Military Survey 5049, being N 57°-02'-33"E, and all other bearings are from angles and distances measured in a field survey by Lee Surveying and Mapping Co., Inc. on November 21, 2005.



ORIGINAL STAMP IN GREEN

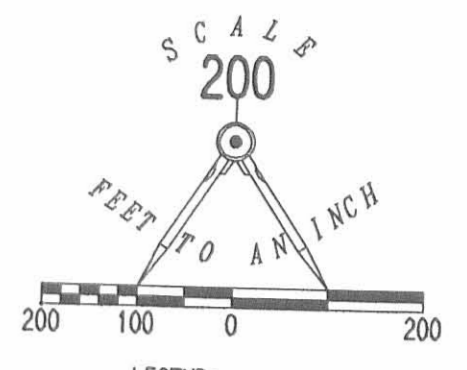
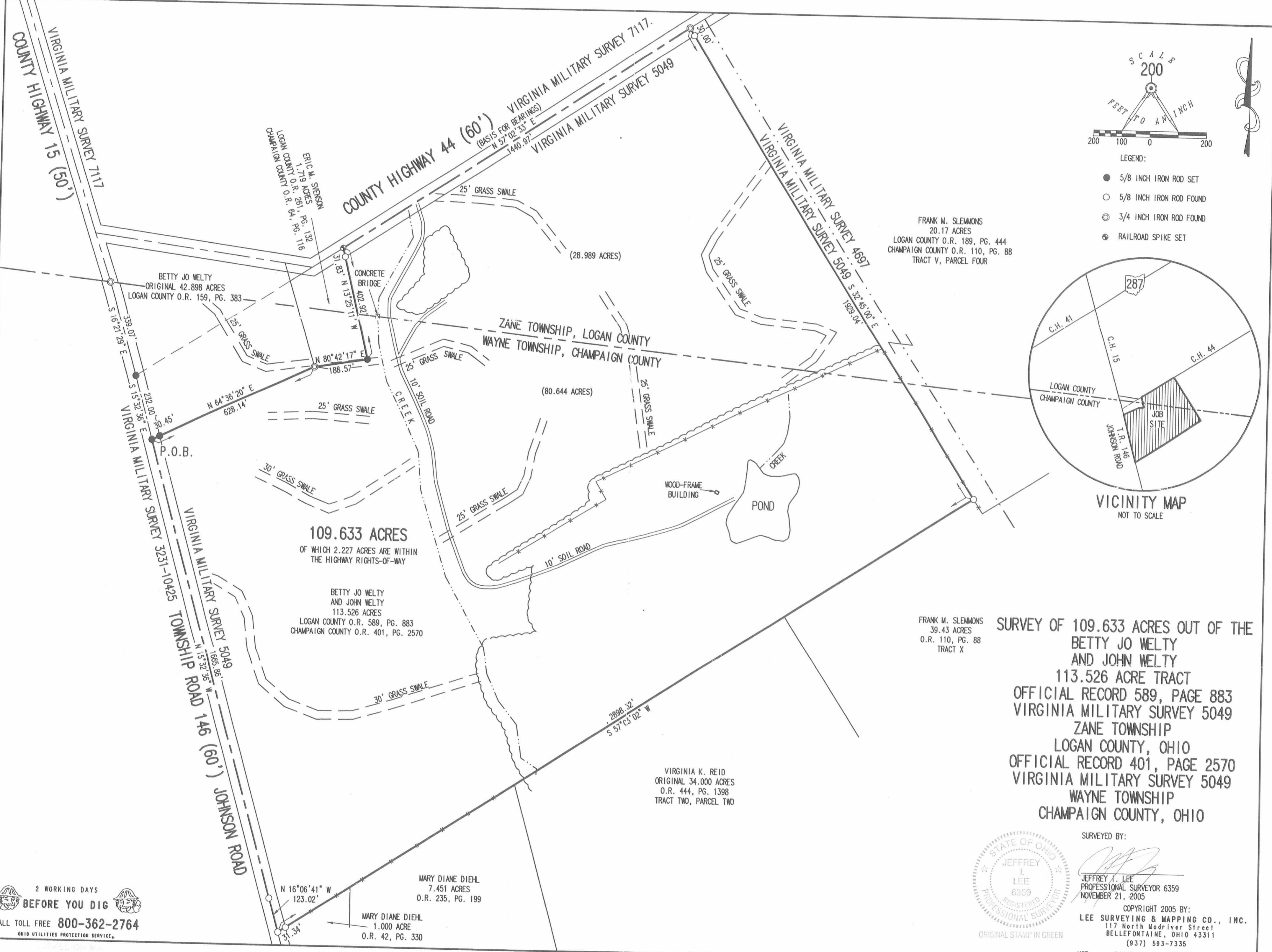
Description prepared by:


Jeffrey I. Lee
Professional Surveyor 6359
November 22, 2005

L-4148

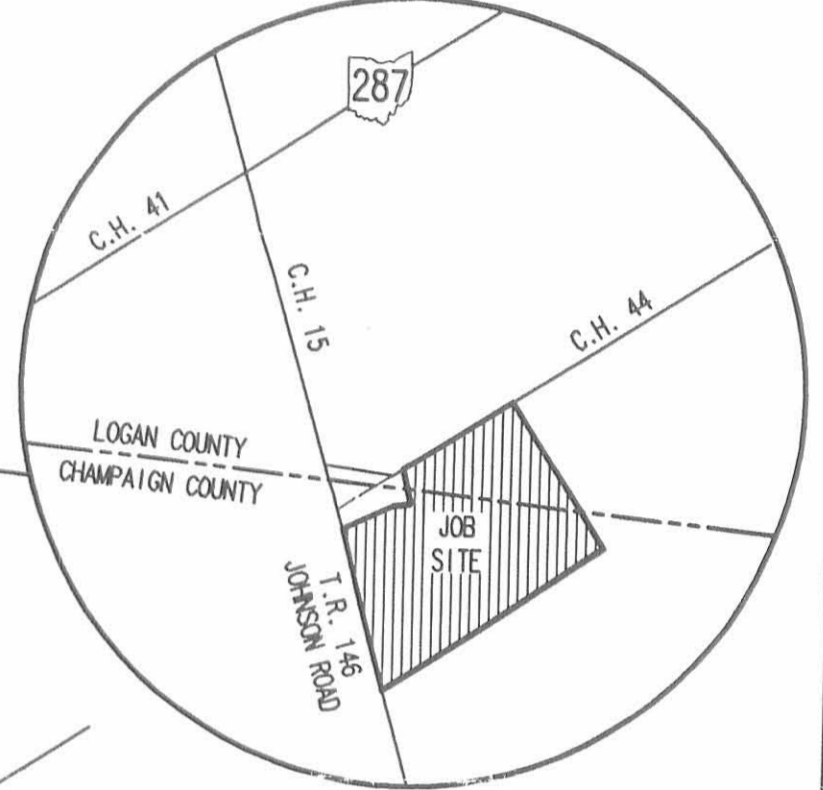
66071D2

2005 1-05 S.M.P.C.



- LEGEND:
- 5/8 INCH IRON ROD SET
 - 5/8 INCH IRON ROD FOUND
 - ⊙ 3/4 INCH IRON ROD FOUND
 - ⊕ RAILROAD SPIKE SET

FRANK M. SLEMONS
20.17 ACRES
LOGAN COUNTY O.R. 189, PG. 444
CHAMPAIGN COUNTY O.R. 110, PG. 88
TRACT V, PARCEL FOUR



VICINITY MAP
NOT TO SCALE

109.633 ACRES
OF WHICH 2.227 ACRES ARE WITHIN
THE HIGHWAY RIGHTS-OF-WAY

BETTY JO WELTY
AND JOHN WELTY
113.526 ACRES
LOGAN COUNTY O.R. 589, PG. 883
CHAMPAIGN COUNTY O.R. 401, PG. 2570

FRANK M. SLEMONS
39.43 ACRES
O.R. 110, PG. 88
TRACT X

**SURVEY OF 109.633 ACRES OUT OF THE
BETTY JO WELTY
AND JOHN WELTY
113.526 ACRE TRACT
OFFICIAL RECORD 589, PAGE 883
VIRGINIA MILITARY SURVEY 5049
ZANE TOWNSHIP
LOGAN COUNTY, OHIO
OFFICIAL RECORD 401, PAGE 2570
VIRGINIA MILITARY SURVEY 5049
WAYNE TOWNSHIP
CHAMPAIGN COUNTY, OHIO**

VIRGINIA K. REID
ORIGINAL 34.000 ACRES
O.R. 444, PG. 1398
TRACT TWO, PARCEL TWO

MARY DIANE DIEHL
7.451 ACRES
O.R. 235, PG. 199

MARY DIANE DIEHL
1.000 ACRE
O.R. 42, PG. 330



SURVEYED BY:
Jeffrey J. Lee
JEFFREY J. LEE
PROFESSIONAL SURVEYOR 6359
NOVEMBER 21, 2005

COPYRIGHT 2005 BY:
LEE SURVEYING & MAPPING CO., INC.
117 North Madriver Street
BELLEFONTAINE, OHIO 43311
(937) 593-7335

KSR D1105 4148105 L-4148-2

2 WORKING DAYS
BEFORE YOU DIG
CALL TOLL FREE 800-362-2764
OHIO UTILITIES PROTECTION SERVICE

66071P

REC'D 12-1-05 8:51 AM CLK

Lee Surveying and Mapping Co., Inc.

Land Surveys • Topography • Subdivisions • Construction Layout

117 N. Madriver St.
Bellefontaine OH 43311



Phone: (937) 593-7335
Fax: (937) 593-7444

1975-2005 - 30 YEARS OF EXCELLENCE

**WELTY
8.000 ACRES**

Lying in Virginia Military Surveys 7117 and 5049, Zane Township, Logan County and Wayne Township, Champaign County.

Being out of the Betty Jo Welty original 42.898 acre tract as deeded and described in Official Record 159, Page 383 of the Logan County Records of Deeds and the Betty Jo Welty and John Welty 113.526 acre tract as deeded and described in Official Record 589, Page 883 of the Logan County Records of Deeds and Official Record 401, Page 2570 of the Champaign County Records of Deeds and being more particularly described as follows:

Beginning at a 1 inch iron bar found on the intersection of center-lines of Logan County Highway 15 and Logan County Highway 44.

THENCE, with the center-line of Logan County Highway 44 (60 feet wide), S 83°-27'-03"E, a distance of 671.40 feet to a 3/4 inch iron bolt found.

THENCE, with the west line of the Eric M. Svenson 1.719 acre tract (Logan County O.R. 261, Pg. 132 and Champaign County O.R. 64, Pg. 116), S 16°-59'-41"E, a distance of 387.10 feet to a 3/4 inch iron rod found, passing a 5/8 inch iron rod set at 32.72 feet, passing a 5/8 inch iron rod found on the south line of Virginia Military Survey 7117 and the north line of Virginia Military Survey 5049 at 70.85 feet and passing a 5/8 inch iron rod found at 356.04 feet.

THENCE, S 64°-36'-20"W, a distance of 628.14 feet to a 5/8 inch iron rod set on the center-line of Champaign County Township Road 146 (Johnson Road), passing a 5/8 inch iron rod set at 597.69 feet.

THENCE, with the center-line of Champaign County Township Road 146 (60 feet wide), the following two courses:

N 15°-32'-36"W, a distance of 232.00 feet to a 5/8 inch iron rod set on the north line of Virginia Military Survey 5049 and the south line of Virginia Military Survey 7117.

N 16°-21'-29"W, a distance of 339.07 feet to a 3/4 inch iron rod found on the north line of Wayne Township, Champaign County and the south line of Zane Township, Logan County.

THENCE, with the center-line of Logan County County Highway 15 (50 feet wide), N 18°-12'-55"W, a distance of 176.11 feet to the point of beginning.

Containing 8.000 acres, of which 0.932 acre is within the highway rights-of-way. There are 2.412 acres in Zane Township, Logan County, of which there is 0.545 acre within the highway right-of-way and 5.588 acres in Wayne Township, Champaign County, of which there is 0.387 acre within the highway right-of-way. There is 4.118 acres in Virginia Military Survey 7117 and 3.882 acres in Virginia Military Survey 5049.

The basis for bearings is the north line of Virginia Military Survey 5049, being N 57°-02'-33"E, and all other bearings are from angles and distances measured in a field survey by Lee Surveying and Mapping Co., Inc. on November 21, 2005 .



ORIGINAL STAMP IN GREEN

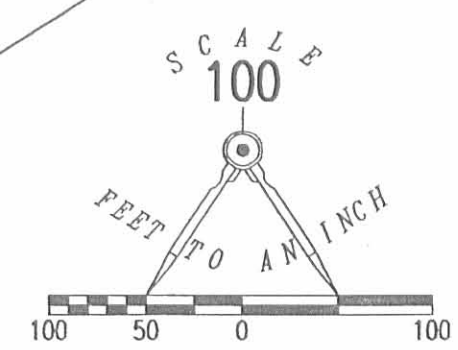
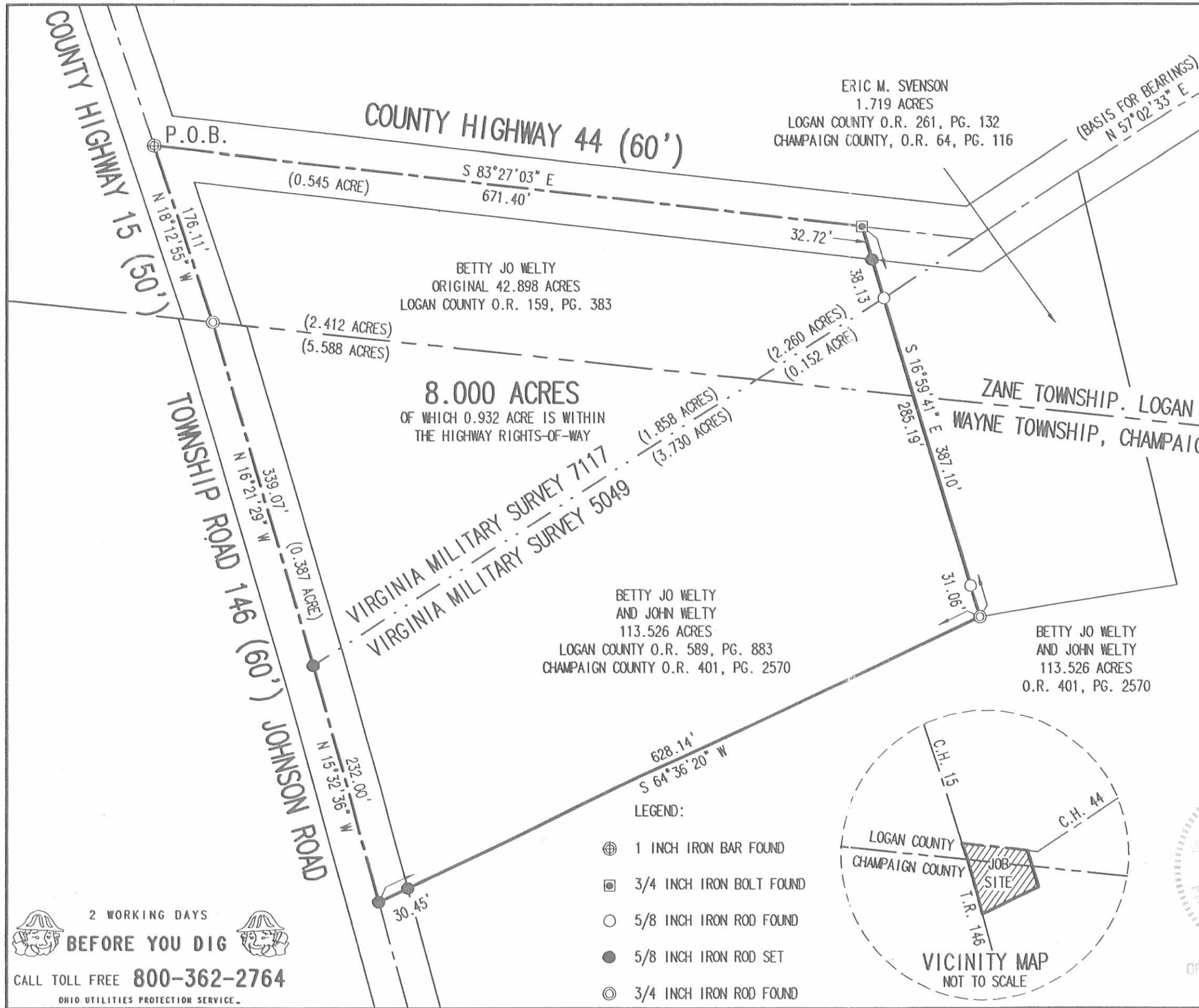
Description prepared by:

Jeffrey I. Lee
Jeffrey I. Lee
Professional Surveyor 6359
November 23, 2005

L-4148

660720

REC'D 12-1-05 S.M.J. OK



**SURVEY OF 8.000 ACRES OUT OF THE
BETTY JO WELTY
ORIGINAL 42.898 ACRE TRACT
OFFICIAL RECORD 159, PAGE 383
VIRGINIA MILITARY SURVEY 7117
ZANE TOWNSHIP, LOGAN COUNTY
AND THE
BETTY JO WELTY
AND JOHN WELTY
113.526 ACRE TRACT
OFFICIAL RECORD 589, PAGE 883
VIRGINIA MILITARY SURVEY 5049
ZANE TOWNSHIP, LOGAN COUNTY
OFFICIAL RECORD 401, PAGE 2570
VIRGINIA MILITARY SURVEY 5049
WAYNE TOWNSHIP, CHAMPAIGN COUNTY
STATE OF OHIO**

SURVEYED BY:

JEFFREY I. LEE
PROFESSIONAL SURVEYOR 6359
NOVEMBER 21, 2005



COPYRIGHT 2005 BY:
LEE SURVEYING & MAPPING CO., INC.
117 North Madriver Street
BELLEFONTAINE, OHIO 43311
(937) 593-7335
KSR D1105 4148105A L-4148-3

2 WORKING DAYS
BEFORE YOU DIG
CALL TOLL FREE **800-362-2764**
OHIO UTILITIES PROTECTION SERVICE.

6607 2P

BETTY JO AND JOHN WELTY SURVEY
5.010 ACRES
November 8, 2002

The following described 5.010 acre tract of land is situated in Virginia Military Surveys 5049 and 7117, Zane Township, Logan County and Wayne Township, Champaign County, Ohio, being part of Betty Jo Welty's original 42.898 acre tract described in Logan County Official Record 159, page 383 and part of Betty Jo and John Welty's 113.526 acre tract described in Logan County Official Record 589, page 883 and in Champaign County Official Record 401, page 2570, said 5.010 acre tract more particularly described as follows:

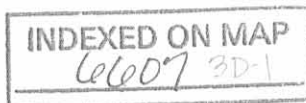
Beginning at a one-inch iron pin found at the intersection of the centerline of Logan County Road 44 (60 feet wide) with the centerline of Logan County Road 15 (50 feet wide), said iron pin being located at the northwest corner of the remainder of said original 42.898 acre tract;

Thence **South 83°26'52" East 671.40 feet**, following the centerline of Logan County Road 44 and the north line of the remainder of said original 42.898 acre tract, to a 3/4 inch iron bolt found at the northwest corner of Eric M. and Barbara H. Svenson's 1.719 acre tract described in Logan County Official Record 261, page 132 and in Champaign County Official Record 164, page 116;

Thence **South 17°01'10" East 355.91 feet**, departing from the centerline of Logan County Road 44, following the west line of said 1.719 acre tract and the east line of the remainder of said original 42.898 acre tract, passing a 5/8 inch iron pin found at 32.73 feet and at 70.79 feet a 5/8 inch iron pin found at the southeast corner of the remainder of said original 42.898 acre tract and at an angle point in the north line of said 113.526 acre tract, said iron pin also being in the south line of V.M.S. 7117 and in the north line of V.M.S. 5049, entering V.M.S. 5049 and following the north line of said 113.526 acre tract thereafter, leaving Zane Township, Logan County and entering Wayne Township, Champaign County, to an iron pin set;

Thence **North 83°26'52" West 669.60 feet**, departing from the west line of said 1.719 acre tract, crossing said 113.526 acre tract and the remainder of said original 42.898 acre tract, departing from V.M.S. 5049 and crossing V.M.S. 7117, passing a 5/8 inch iron pin set at 637.02 feet, to a railroad spike set in the centerline of Wayne Township Road 146 (60 feet wide) and in the west line of V.M.S. 7117;

Thence **North 16°22'49" West 180.56 feet**, following the centerline of Wayne Township Road 146, the west line of V.M.S. 7117, and the west line of the remainder of said original 42.898 acre tract, to a 3/4 inch iron pin found in the north line of Wayne Township, Champaign County and in the south line of Zane Township, Logan County, said iron pin also marking the southernmost point in the centerline of Logan County Road 15;



Thence **North 18°12'38" West 176.12 feet**, following the centerline of Logan County Road 15, the west line of V.M.S. 7117, and the west line of the remainder of said original 42.898 acre tract, to the **place of beginning, containing 5.010 acres**, more or less, and subject to all valid easements and restrictions of record.

Of the above described 5.010 acre tract, 0.669 acre is within the road right-of-way (0.125 acre being within Wayne Township Road 146 and 0.544 acre being within Logan County Road 44 and Logan County Road 15), also 3.717 acres are part of said original 42.898 acre tract (2.215 acre within Zane Township, Logan County and 1.502 acre within Wayne Township, Champaign County) and 1.293 acres are part of said 113.526 acre tract (0.125 acre within Zane Township, Logan County and 1.168 acre within Wayne Township, Champaign County).

The above description was prepared from an actual field survey made by George A. Blackburn, Registered Surveyor #7873, during the month of November 2002. Iron pins set are 5/8 inch by 30 inch reinforcing rods with plastic caps marked "Blackburn RS #7873." Bearings indicated herein are based on the centerline of Logan County Road 44 being South 83°26'52" East.

Description prepared by: George A. Blackburn 11/10/02

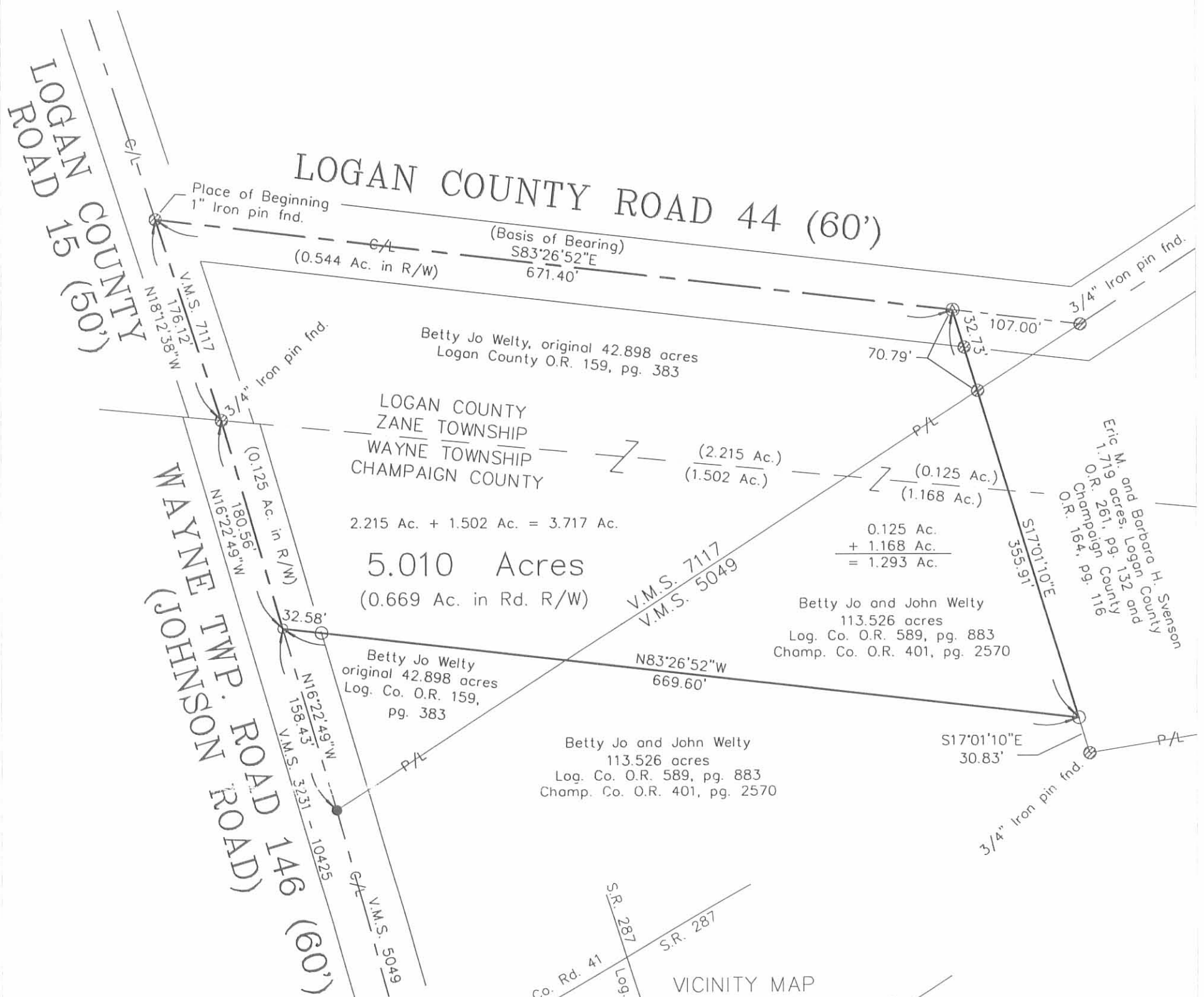
George A. Blackburn, R.S. #7873
12125 Green Street
Middleburg, Ohio 43336
(937) 666-5605



INDEXED ON MAP
6607 302

REV'D 11-19-02 SWJ/ak

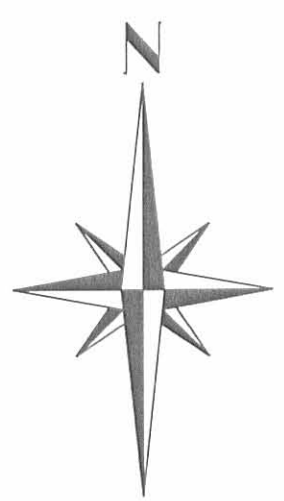
V.M.S. 5049 AND V.M.S. 7117 ZANE TOWNSHIP, LOGAN COUNTY AND WAYNE TOWNSHIP, CHAMPAIGN COUNTY, OHIO



- Railroad spike set
- Railroad spike found
- ⊗ 3/4" Iron bolt found
- 5/8" Iron pin set
- ⊙ 5/8" Iron pin found unless otherwise noted

BETTY JO AND JOHN WELTY SURVEY

Being a 5.010 acre tract split out of Betty Jo Welty's original 42.898 acre tract described in Logan County Official Record 159, page 383 and out of Betty Jo and John Welty's 113.526 acre tract described in Logan County Official Record 589, page 883 and in Champaign County Official Record 401, page 2570.



I hereby certify that this plot was prepared from an actual field survey and that monuments were placed as indicated hereon.

George A. Blackburn 11/1/02
 George A. Blackburn, R.S. 7873

INDEXED ON MAP
6607 3P

Filename: Welty 11-02
 Scale: 1" = 100'
 Date: 11/8/02
 F.B. 8, pg. 23

BLACKBURN SURVEYING

12125 GREEN STREET
 MIDDLEBURG, OHIO 43336
 (937) 666-5605

REV 7-27-00 SWM OK ✓

DESCRIPTION OF 4.116 ACRES

Situated in the State of Ohio, being part in the County of Logan, Township of Zane, in V.M.S. 7117, and being part in the County of Champaign, Township of Wayne, in V.M.S. 7117, of "The Virginia Military District - 1784", being a new survey of part of a 41.254 acres tract as conveyed to Betty Jo Welty by Official Records Volume 159, Page 383 of the Logan County Recorder's Office, and being bounded and described as follows:

Beginning at a 1" iron pin found in the centerline intersection of County Road No. 15 and County Road No. 44 (Note: Reference bearing on the centerline of County Road No. 15 to the north of County Road No. 44 used as North 17°30'00" West as shown on the road note of County Road 15.);

Thence, from said Point of Beginning and running with the centerline of County Road No. 44 (60' wide R/W), South 83°27'04" East a distance of 671.41 feet to a 3/4" bolt found at the northwest corner of a 1.719 acres tract as conveyed to Eric M. Svenson, et. ux. by Official Records Volume 261, Page 132 of the Logan County Recorder's Office and by Official Records Volume 164, Page 116 of the Champaign County Recorder's Office;

Thence, leaving the road with the west line of said Svenson property, South 17°01'44" East a distance of 70.79 feet to an iron pin set in the south line of V.M.S. 7117 and the north line of V.M.S. 5049 and 5043, passing through an iron pin set at a distance of plus 22.50 feet;

Thence, with the south line of V.M.S. 7117 and the north line of V.M.S. 5049 and 5043, South 57°02'33" West a distance of 640.07 feet to a railroad spike set in the centerline of Township Road No. 146 (Johnson Road - 50' wide R/W) in Wayne Township, Champaign County, passing over the Logan County - Champaign County line at a distance of plus 133.43 feet and passing through two iron pins set at distances of plus 510.07 feet and plus 610.07 feet, respectively;

Thence, with the centerline of Township Road No. 146, the west line of V.M.S. 7117, and the east line of V.M.S. 3231 and 10425, North 16°23'01" West a distance of 338.95 feet to a 5/8" iron pin found in the Logan County - Champaign County line;

Thence, with the centerline of County Road No. 15, the west line of V.M.S. 7117, and the east line of V.M.S. 3231 and 10425, North 18°13'32" West a distance of 176.12 feet to The Point of Beginning;

Containing 4.116 acres, more or less, of which:
2.227 acres are in V.M.S. 7117 in Zane Township, Logan County and
1.889 acres are in V.M.S. 7117 in Wayne Township, Champaign County.

Note: 0.563 acres are in the right-of-way of public roads in Logan County and
0.194 acres are in the right-of-way of public roads in Champaign County.

Subject to all legal right-of-ways, easement, restrictions, reservations, and zoning regulations of record.

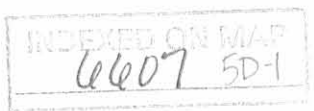
Subject to the right-of-way of County Road No. 15 (Logan County).

Subject to the right-of-way of County Road No. 44 (Logan County).

Subject to the right-of-way of Township Road No. 146 (Champaign County).

Subject to the 100-Year Flood Plain restrictions, if applicable.

All iron pins set are 5/8" x 30" rebar capped and labeled "Claus 6456".



The bearings in this description are for angle calculations only and are based on the centerline of County Road No. 15 to the north of County Road No. 44 used as North 17°30'00" West as shown on the road survey of County Road 15 in Logan County Field Book 558, Page 36.

A plat of the above-described survey has been submitted for file at the County Engineer's Office.

The above description prepared by Roger W. Claus, Registered Surveyor No. 6456, based on an actual field survey of July 9, 2000; said survey being subject to any facts that may be disclosed in a full and accurate title search.

Prior deed: Official Records Volume 159, Page 383 Logan County Recorder's Office
Note: No deed found recorded in Champaign County.

Surveyor: Roger W. Claus
Date: 07-26-00



FILED
6607 5D-2

SURVEY PLAT FOR BETTYJO WELTY

Line	Bearing	Distance
1	N 75°28'35"E	25.00'
2	N 75°28'35"E	351.37'
3	S 34°39'50"E	100.00'
4	S 34°39'50"E	50.00'
5	S 57°02'33"W	277.87'
6	S 57°02'33"W	118.66'
7	N 83°27'04"W	107.00'
8	S 17°01'44"E	22.50'
9	S 17°01'44"E	48.29'
10	S 57°02'33"W	133.43'
11	S 57°02'33"W	100.00'
12	S 57°02'33"W	30.00'
13	N 16°23'01"W	338.95'
14	N 18°13'32"W	176.12'
15	N 17°30'00"W	31.17'

THE BEARINGS ON THIS PLAT ARE FOR ANGLE CALCULATIONS ONLY AND ARE BASED ON AN ASSUMED BEARING ON THE CENTERLINE OF COUNTY ROAD 15 (FORMER HAINES PIKE - 50' R/W) TO THE NORTH OF COUNTY ROAD NO. 44 USED AS NORTH 17°30'00" WEST AS SHOWN IN LOGAN COUNTY FIELD BOOK 558, PG. 36 AND IN F. T. RECORD 5, PG. 441.

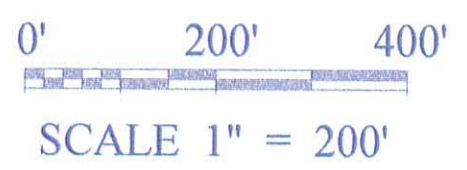
SITUATED IN THE STATE OF OHIO, BEING PART IN THE COUNTY OF LOGAN, TOWNSHIP OF ZANE, IN V.M.S. SURVEY NO. 7117, AND BEING PART IN THE COUNTY OF CHAMPAIGN, TOWNSHIP OF WAYNE, IN V.M.S. 7117, OF "THE VIRGINIA MILITARY DISTRICT - 1784"

PERTINENT DOCUMENTS

- (1) ALL DEEDS AS SHOWN.
- (2) COUNTY TAX MAPS.
- (3) U.S.G.S. QUAD. MAP "NORTH LEWISBURG"
- (4) U.S.G.S. QUAD. MAP "KINGS CREEK"
- (5) ASCS AERIAL PHOTO
- (6) LOGAN CO. SURVEY RD. 15 FROM RD. 44 TO S.H. 607 F.B. 558, PG. 36 AND F.T. RECORD 5, PG. 441
- (7) SURVEY PLAT BY CLAYTON M. LEE (3-17-81)
- (8) SURVEY PLAT BY CLAYTON M. LEE (5-81)
- (9) SURVEY PLAT BY CLAYTON M. LEE (7-11-79)
- (10) SURVEY PLAT BY LESLIE H. GEESLIN (6-24-99)
- (11) SURVEY PLAT BY PAUL R. CLAPSADDLE (10-2-74)
- (12) V.M.S. SURVEY 3230 (SURVEY RECORD "C", PG. 24)
- (13) V.M.S. SURVEY 9657 AND 9740 (DEC. 1, 1818)
- (14) V.M.S. SURVEY 5049 (JAN. 22, 1807)
- (15) V.M.S. SURVEY 7117 (MAY 25, 1832)
- (16) V.M.S. SURVEY 3230 (JUNE 1, 1798)
- (17) V.M.S. SURVEY 5049 (JAN. 22, 1807)
- (18) V.M.S. SURVEY 3231 (NOV. 7, 1823)
- (19) V.M.S. INDEX MAP IN CHAMPAIGN CO., WAYNE TWP.
- (20) ROAD R/W MAP OF ROAD 44 LOGAN CO. MILEAGE LOG POINT 0.00 TO 4.24

SURVEY OF 4.116 ACRES FOR BETTYJO WELTY
2.227 ACRES IN LOGAN CO.
1.889 ACRES IN CHAMPAIGN CO.
OUT OF O.R. VOL. 159, PG. 383 LOGAN CO.
(ORIGINAL DEED 41.254 AC.)
NO DEED FOUND RECORDED IN CHAMPAIGN CO.

0.563 ACRE IN PUBLIC ROAD R/W (LOGAN CO.)
0.194 ACRE IN PUBLIC ROAD R/W (CHAMPAIGN CO.)



- ▲ = MAG. NAIL SET
- = STEEL MONUMENT BOX FOUND IN ROAD "LOGAN COUNTY ENGINEER"
- ⊙ = 5/8" IRON PIN FOUND CAPPED "S-6034"
- = 1" IRON PIN FOUND UNCAPPED.
- ⊗ = 3/4" IRON PIN FOUND UNCAPPED.
- ⊘ = 5/8" IRON PIN FOUND UNCAPPED.
- ⊙ = 3/4" BOLT FOUND
- ⊙ = 1/2" X 30" IRON PIN FOUND CAPPED "CLAUS 6456".
- ⊙ = 5/8" X 30" IRON PIN SET CAPPED "CLAUS 6456"
- ⊙ = 1/2" IRON PIN FOUND UNCAPPED.
- ⊙ = 5/8" IRON PIN FOUND CAPPED "L. GEESLIN S-5248"
- ⊙ = 5/8" IRON PIN FOUND CAPPED "LEE PS-6359"
- ⊙ = 5/8" IRON PIN FOUND CAPPED "CLAPSADDLE RS-6140"
- ⊕ = CONCRETE MONUMENT FOUND
- ⊞ = MARKED STONE FOUND.
- ⊟ = UN-MARKED STONE FOUND
- + = SURVEY ANGLE POINT
- ▲ = RAILROAD SPIKE SET
- ▲ = RAILROAD SPIKE FOUND.
- ⊙ = TREE WITH WIRE FOUND
- = EXISTING PROPERTY LINES
- x-x- = FENCE EVIDENCE FOUND
- = LINES OF THIS SURVEY

SUBJECT TO ALL LEGAL RIGHT-OF-WAYS, EASEMENTS, RESTRICTIONS, RESERVATIONS, AND ZONING REGULATIONS OF RECORD. SUBJECT TO 100 YEAR FLOOD PLAIN RESTRICTIONS, IF APPLICABLE. SUBJECT TO ANY FACTS THAT MAY BE DISCLOSED IN A FULL AND ACCURATE TITLE SEARCH.



SURVEYORS CERTIFICATION:

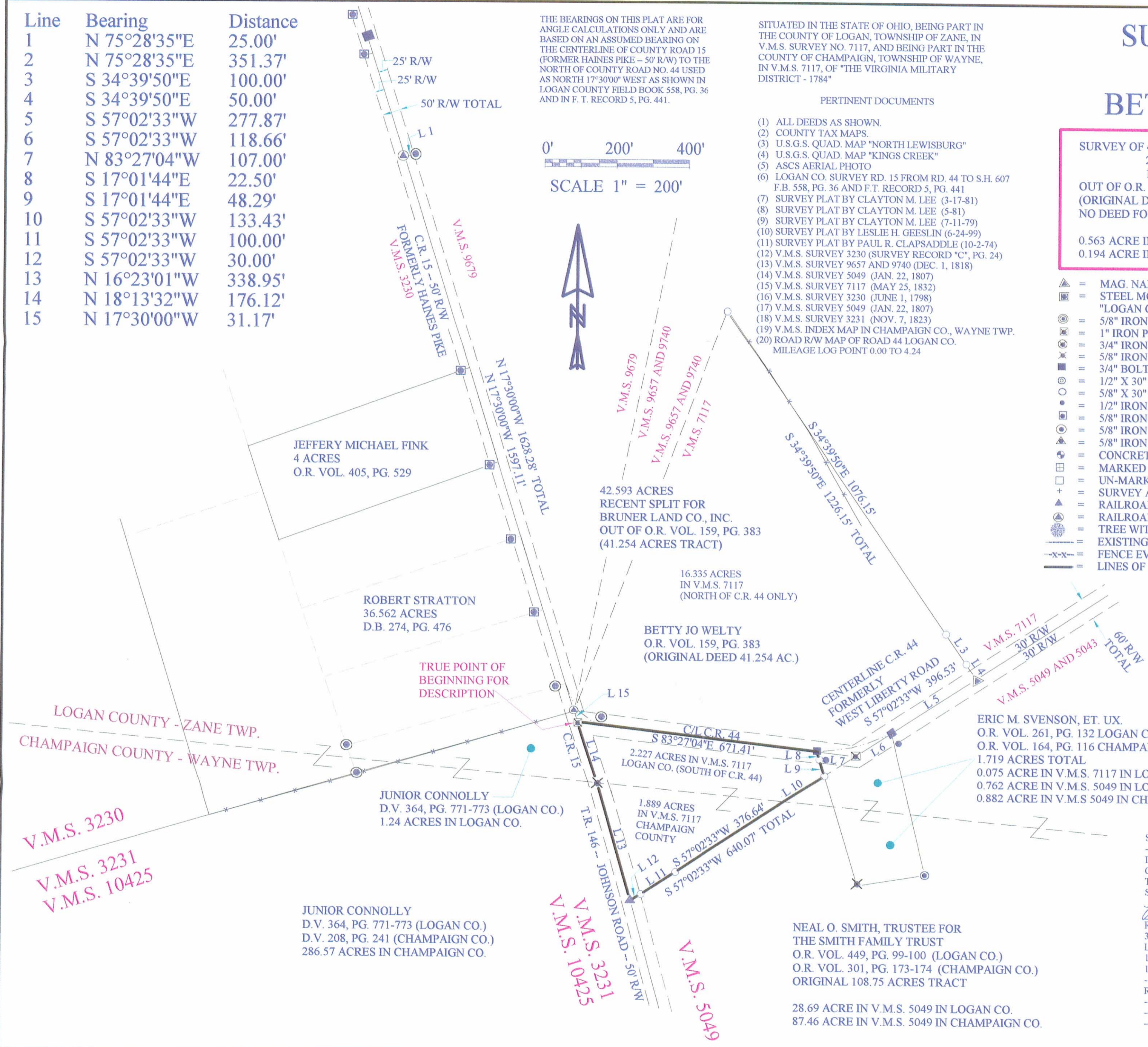
I HEREBY CERTIFY THAT THIS PLAT IS TRUE AND CORRECT TO THE BEST OF MY KNOWLEDGE AND THAT IT WAS PREPARED FROM AN ACTUAL FIELD SURVEY OF THE PREMISES.

Roger W. Claus 07-26-00
 ROGER W. CLAUS, REG. SURVEYOR 6456 DATE:
 33310 CHRISTMAN RIDGE ROAD
 LEWISVILLE, OHIO 43754
 1-740-567-3168
 1-740-567-3106 fax

REVISIONS	DATE	INITIALS

NEAL O. SMITH, TRUSTEE FOR THE SMITH FAMILY TRUST
 O.R. VOL. 449, PG. 99-100 (LOGAN CO.)
 O.R. VOL. 301, PG. 173-174 (CHAMPAIGN CO.)
 ORIGINAL 108.75 ACRES TRACT

28.69 ACRE IN V.M.S. 5049 IN LOGAN CO.
 87.46 ACRE IN V.M.S. 5049 IN CHAMPAIGN CO.



INDEXED ON MAP
6/6/07 5P

NEAL SMITH SURVEY
113.526 ACRES
January 4, 2001
Revised March 12, 2001

The following described 113.526 acre tract of land is situated in Virginia Military Survey 5049, Zane Township, Logan County, Ohio, and Wayne Township, Champaign County, Ohio and being all of an original 107.106 acre tract deeded to Neal O. Smith (1/2 interest), Trustee of the Smith Family Trust, dated April 7, 2000, by Logan County Official Record 449, page 99 and Champaign County Official Record 301, page 173, and also deeded to Donna Graham (1/2 interest) by Logan County Official Record 159, page 387 and Champaign County Official Record 89, page 508, said 113.526 acre tract more particularly described as follows:

Beginning at a railroad spike found in the centerline of Wayne Township Road 146 (Johnson Road, 60 feet wide), at the south corner of V.M.S. 7117, the westernmost corner of V.M.S. 5049, the westernmost corner of said original 107.106 acre tract, and the south corner of Betty Jo Welty's original 42.898 acre tract described in Logan County Official Record 159, page 383, said railroad spike also being in the northeast line of V.M.S. 3231 - 10425 and marking the **place of beginning**;

Thence **North 57°02'33" East 640.12 feet**, departing from the centerline of Wayne Township Road 146 and the northeast line of V.M.S. 3231 - 10425, following the southeast line of V.M.S. 7117, the northwest line of V.M.S. 5049, the southeast line of said original 42.898 acre tract, and the northwest line of said original 107.106 acre tract, passing a 5/8 inch iron pin found at 29.95 feet, leaving Champaign County and entering Logan County, to a 5/8 inch iron pin found in the southwest line of Eric M. and Barbara H. Svenson's 1.719 acre tract described Logan County Official Record 261, page 132, and in Champaign County Official Record 164, page 116;

Thence **South 17°01'10" East 316.20 feet**, departing from the southeast line of V.M.S. 7117 and said original 42.898 acre tract, entering V.M.S. 5049, following the southwest line of said 1.719 acre tract and the northwest line of said original 107.106 acre tract, leaving Logan County and Entering Champaign County, to a 3/4 inch iron pin found;

Thence **North 80°42'17" East 188.57 feet**, following the south line of said 1.719 acre tract and the northwest line of said original 107.106 acre tract, to a 5/8 inch iron pin found;

Thence **North 13°25'11" West 402.92 feet**, following the east line of said 1.719 acre tract and the northwest line of said original 107.106 acre tract, leaving Champaign County and entering Logan County, passing an iron pin set at 371.09 feet, to a 3/4 inch bolt found in the centerline of Logan County Road 44 (60 feet wide), in the southeast line of V.M.S. 7117, and in the northwest line of V.M.S. 5049;

Thence **North 57°02'33" East 1440.97 feet**, following the centerline of Logan County Road 44, the southeast line of V.M.S. 7117, the northwest line of V.M.S. 5049, and the northwest line of said original 107.106 acre tract, to 3/4 inch iron pin found in a monument box at the westernmost corner of Frank M. Slemmons' Tract V, Parcel Four, 20.17 acres, described in Logan County Official Record 189, page 444 and in Champaign County Official Record 110, page 88;

Thence **South 32°45'03" East 1929.21 feet**, departing from the centerline of Logan County Road 44 and the southeast line of V.M.S. 7117, entering V.M.S. 5049, following the southwest line of said 20.17 acre tract and the northeast line of said original 107.106 acre tract, passing an iron pin set at 30.00 feet, leaving Logan County and entering Champaign County, to an iron pin set at an angle point in the northwest line of Frank M. Slemmons' Tract X, 39.43 acres, described in Logan County Official Record 189, page 444, and in Champaign County Official Record 110, page 88;

INDEXED ON MAP
66074D1

Thence **South 57° 03'05" West 2898.29 feet**, departing from the southwest line of said 20.17 acre tract, following the southeast line of said original 107.106 acre tract and the northwest line of said 39.43 acre tract, passing at 787.71 feet a 5/8 inch iron pin found at the north corner of Virginia K. Reid's Tract Two, Parcel Two, originally 34.00 acres, described in Champaign County Official Record 104, page 230, following thereafter, the northwest line of said original 34.00 acre tract, the northwest line of Mary Diane Diehl's 7.451 acre tract described in Champaign County Official Record 235, page 199, and the northwest line of Mary Diane Diehl's 1.000 acre tract described in Champaign County Official Record 42, page 330, also passing a 5/8 inch iron pin found at 2866.96 feet, to an iron pin set in the centerline of Wayne Township Road 146 (60 feet wide), in the northeast line of V.M.S. 3231 – 10425, and in the southwest line V.M.S. 5049;

Thence **North 16°08' 39" West 123.02 feet**, following the centerline of Wayne Township Road 146 (60 feet wide), the northeast line of V.M.S. 3231 - 10425, the southwest line of V.M.S. 5049, and the southwest line of said original 107.106 acre tract, to a 5/8 inch iron pin found;

Thence **North 15°32'44" West 1897.96 feet**, continuing with the centerline of Wayne Township Road 146, the northeast line of V.M.S. 3231 - 10425, the southwest line of V.M.S. 5049, and the southwest line of said original 107.106 acre tract, to the **place of beginning, containing 113.526 acres**, more or less, and subject to all valid easements and restrictions of record.

Of the above described 113.526 acre tract, 0.996 acre is within the road right of way of Logan County Road 44, 1.392 acres are within the road right of way of Wayne Township Road 146, 28.168 acres are within Zane Township, Logan County and 85.358 acres are within Wayne Township, Champaign County.

The above description was prepared from an actual field survey made by George A. Blackburn, Registered Surveyor #7873, during the month of January 2001. Iron pins set are 5/8 inch by 30 inch reinforcing rods with plastic caps marked "Blackburn RS #7873." Bearings indicated herein are based on the centerline of Logan County Road 44 being North 57°02'33" East.

Description prepared by: George A. Blackburn
George A. Blackburn, R.S. #7873
12125 Green Street
Middleburg, Ohio 43336
(937) 666-5605



INDEXED ON MAP
66076D2

Lee Surveying and Mapping Co.



Farm Surveys • Lot Surveys • Topography • Subdivisions • Construction Layout

855 EAST SANDUSKY AVENUE
MONTAINE, OHIO 43311

(513) 593-5780

CLAYTON M. LEE, P.S.
JEFFREY I. LEE, P.S.

PATRICK TO SCHROEDER

Lying in V.M.S. 5049 in both Zane Township, Logan County and Wayne Township, Champaign County and also V.M.S. 7117 in Zane Township, Logan County, Ohio.

Being out of those lands lying in the name of Ruby Patrick as deeded and described in Champaign County Records, Volume 217, Page 1015 (Tract 1) and Logan County Records, Volume 359, Page 226 (Tract 1 and Tract 2) and more particularly described as follows:

Beginning at an iron bolt set on the center-line of Logan County Road 44. This point lying S 84°-04'-20" E, along said center-line from the center-line of Logan County Road 15.

THENCE, continuing with the center-line of County Road 44, S 84°-04'-40" E, a distance of 107.00 feet to an iron rod set in an angle of said County Road 44 on the line between V.M.S. 7117 and V.M.S. 5049.

THENCE, continuing with the said V.M.S. line, the same being the center-line of said County Road 44, N 56°-25' E, a distance of 118.60 feet to a bolt.

THENCE, S 14°-04' E, a distance of 402.68 feet to an iron rod. Passing an iron rod set on the road right-of-way line at 21.22 feet.

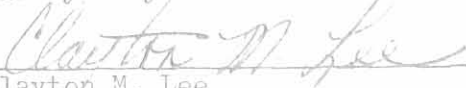
THENCE, S 80°-02' W, a distance of 188.52 feet to an iron rod.

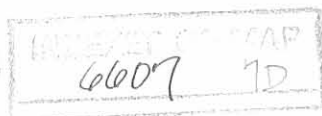
THENCE, N 17°-40' W, a distance of 386.94 feet to the point of beginning. Passing an iron rod set on the road right-of-way line at 365.12 feet.

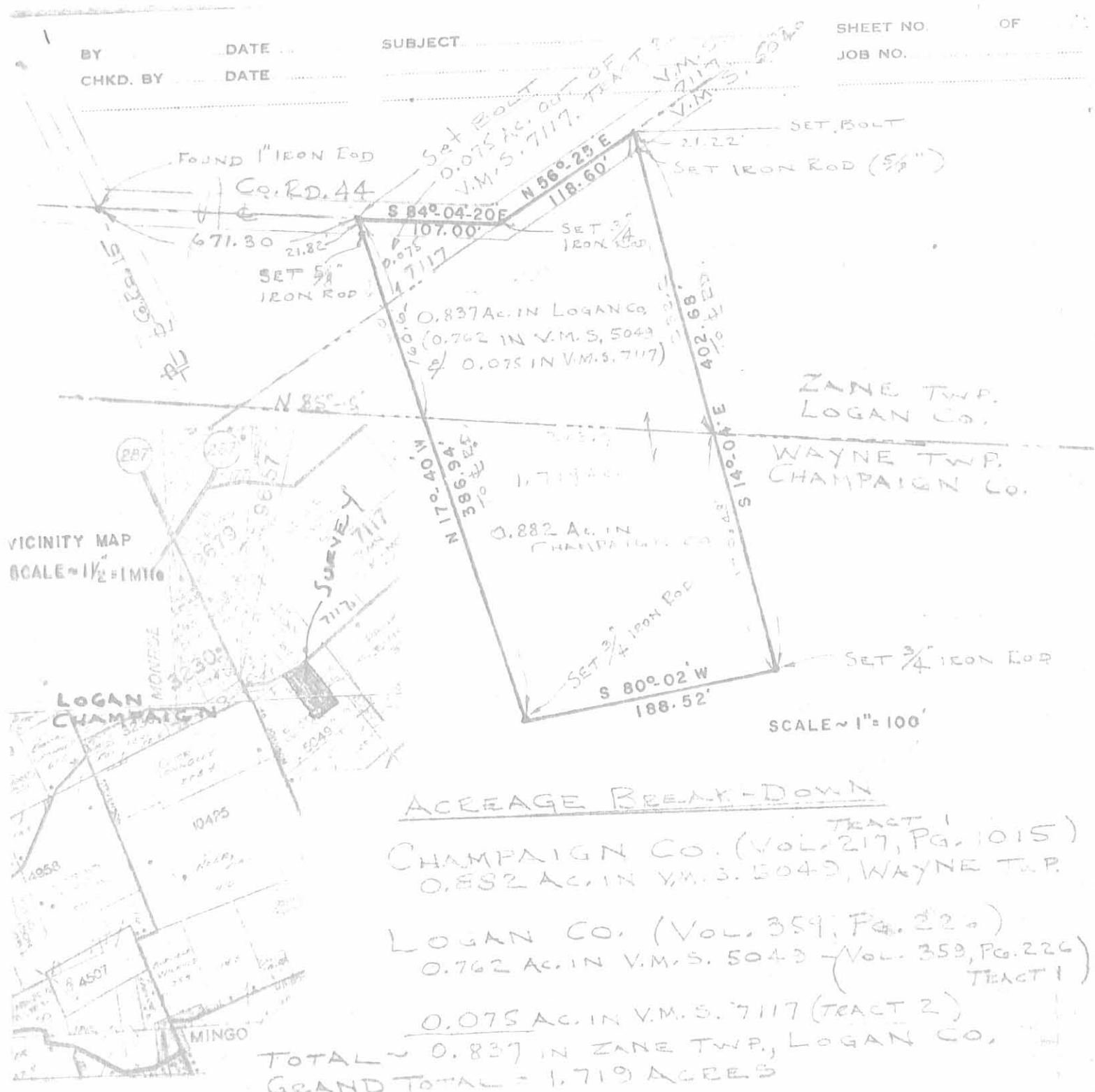
Containing 1.719 acres of which 0.882 acre lies in V.M.S. 5049, Wayne Township, Champaign County; 0.762 acre lies in V.M.S. 5049, Zane Township, Logan County; 0.075 acre lies in V.M.S. 7117, Zane Township, Logan County.

Last previous deed reference: Champaign County Volume 217, Page 1015
Logan County Volume 359, Page 226

Surveyed By:


Clayton M. Lee
Reg. Surveyor No. 6181
3-26-81





VICINITY MAP
 SCALE ~ 1 1/2" = 1 MILE

SCALE ~ 1" = 100'

ACREAGE BREAK-DOWN

TRACT 1
 CHAMPAIGN CO. (Vol. 217, Pg. 1015)
 0.882 AC. IN V.M.S. 5049, WAYNE TWP.

LOGAN CO. (Vol. 359, Pg. 226)
 0.762 AC. IN V.M.S. 5049 (Vol. 359, Pg. 226)
 TRACT 1

0.075 AC. IN V.M.S. 7117 (TRACT 2)

TOTAL ~ 0.837 IN ZANE TWP, LOGAN CO.
 GRAND TOTAL = 1.719 ACRES



SURVEY OF 1.719 ACRES OUT OF THE RUBY PATRICK LANDS
 LOCATED IN V.M.S. 5049, WAYNE TWP, CHAMPAIGN CO. (Vol. 217, Pg. 1015)
 & V.M.S. 5049 And V.M.S. 7117, ZANE TWP, LOGAN CO. (Vol. 359, Pg. 226)
 STATE OF OHIO.

6607 7P
 INDEXED ON MAP



By: Clayton M. Lee
 Clayton M. Lee
 Reg. Surveyor 6181
 3-17-81

LEE SURVEYING & MAPPING CO.
 855 E. Sandusky Ave.
 BELLEFONTAINE, OHIO 43311
 (513) 593-5780

L-805-5