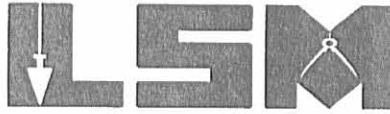


Lee Surveying and Mapping Co., Inc.

Land Surveys • Topography • Subdivisions • Construction Layout

117 N. Madriver St.
Bellefontaine OH 43311



Phone: (937) 593-7335
Fax: (937) 593-7444

1975-2005 - 30 YEARS OF EXCELLENCE

**WELTY
109.633 ACRES**

Lying in Virginia Military Survey 5049, Zane Township, Logan County and Wayne Township, Champaign County, Ohio.

Being out of the Betty Jo Welty and John Welty 113.526 acre tract as deeded and described in Official Record 589, Page 883 of the Logan County Records of Deeds and Official Record 401, Page 2570 of the Champaign County Records of Deeds and being more particularly described as follows:

Beginning at a 3/4 inch iron rod found on the center-line of Logan County Highway 15 and Champaign County Township Road 146 (Johnson Road) at the intersection with the south line of Logan County and the north line of Champaign County.

THENCE, with the center-line of Champaign County Township Road 146 (60 feet wide), the following two courses:

S 16°-21'-29"E, a distance of 339.07 feet to a 5/8 inch iron rod set on the north line of Virginia Military Survey 5049.

S 15°-32'-36"E, a distance of 232.00 feet to a 5/8 inch iron rod set at the TRUE POINT OF BEGINNING.

THENCE, N 64°-36'-20"E, a distance of 628.14 feet to a 3/4 inch iron rod found, passing a 5/8 inch iron rod set at 30.45 feet.

THENCE, with the lines of the Eric M. Svenson 1.719 acre tract (Logan County O.R. 261, Pg. 132, Champaign County O.R. 64, Pg. 116), the following two courses:

N 80°-42'-17"E, a distance of 188.57 feet to a 5/8 inch iron rod set.

N 13°-25'-11"W, a distance of 402.92 feet to a railroad spike set on the north line of Virginia Military Survey 5049 and the center-line of Logan County Highway 44, passing a 5/8 inch iron rod found at 371.09 feet.

THENCE, with the north line of Virginia Military Survey 5049 and the center-line of Logan County Highway 44 (60 feet wide), N 57°-02'-33"E, a distance of 1440.97 feet to a 3/4 inch iron rod found.

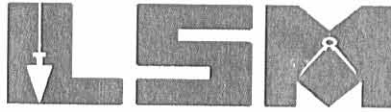
THENCE, with the west line of the Frank M. Slemmons 20.17 acre tract (Logan County O.R. 189, Pg. 444, Tract V, Parcel Four and Champaign County O.R. 110, Pg. 88, Tract V, Parcel Four), S 32°-45'-00"E, a distance of 1929.04 feet to a 5/8 inch iron rod found, passing a 5/8 inch iron rod found at 30.00 feet.

THENCE, with the north lines of the Frank M. Slemmons 39.43 acre tract (Champaign County O.R. 110, Pg. 88, Tract X), the Virginia K. Reid original 34.000 acre tract (Champaign County O.R. 444, Pg. 1398, Tract Two, Parcel Two) and the Mary Diane Diehl 7.451 acre tract and 1.000 acre tract (Champaign County O.R. 235, Pg. 199 and O.R. 42, Pg. 330), S 57°-03'-02"W, a distance of 2898.32

Lee Surveying and Mapping Co., Inc.

Land Surveys • Topography • Subdivisions • Construction Layout

117 N. Madriver St.
Bellefontaine OH 43311



Phone: (937) 593-7335
Fax: (937) 593-7444

1975-2005 - 30 YEARS OF EXCELLENCE

feet to a 5/8 inch iron rod found on the west line of Virginia Military Survey 5049 and on the center-line of Champaign County Township Road 146, passing a 5/8 inch iron rod found at 2866.98 feet.

THENCE, with the west line of Virginia Military Survey 5049 and on the center-line of Champaign County Township Road 146, the following two courses:

N 16°-06'-41"W, a distance of 123.02 feet to a 5/8 inch iron rod found.

N 15°-32'-36"W, a distance of 1665.86 feet to the point of beginning.

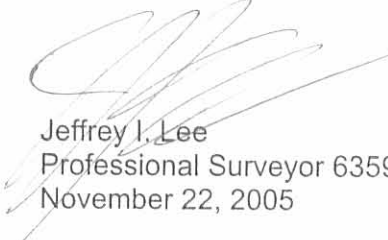
Containing 109.633 acres, of which there are 2.227 acres within the highway rights-of-way. There are 28.989 acres in Logan County, of which there is 0.996 acre within the highway right-of-way and 80.644 acres in Champaign County, of which there are 1.231 acres within the highway right-of-way.

The basis for bearings is the north line of Virginia Military Survey 5049, being N 57°-02'-33"E, and all other bearings are from angles and distances measured in a field survey by Lee Surveying and Mapping Co., Inc. on November 21, 2005.



ORIGINAL STAMP IN GREEN

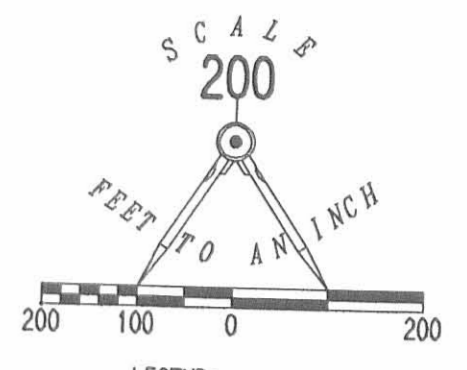
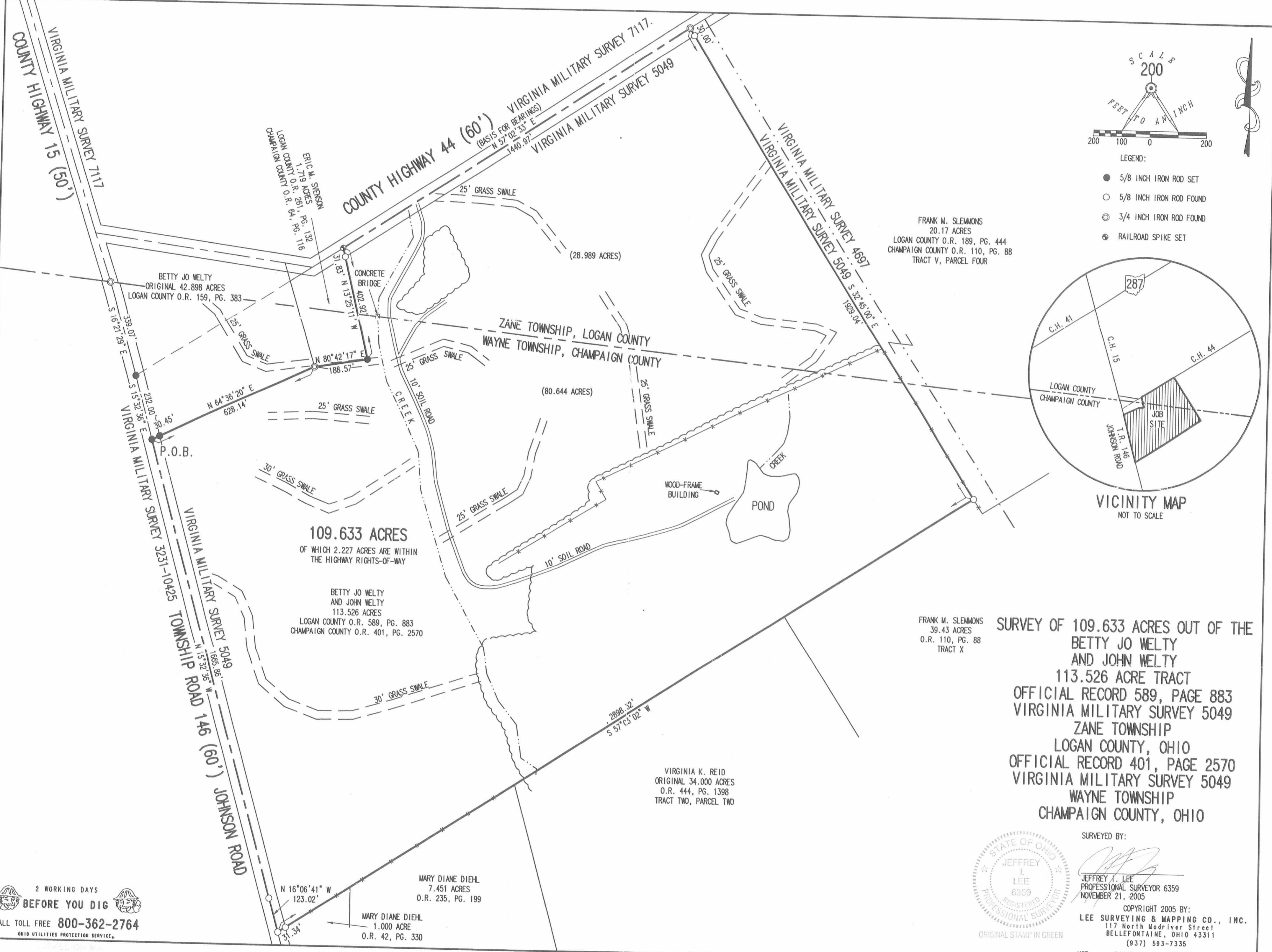
Description prepared by:


Jeffrey I. Lee
Professional Surveyor 6359
November 22, 2005

L-4148

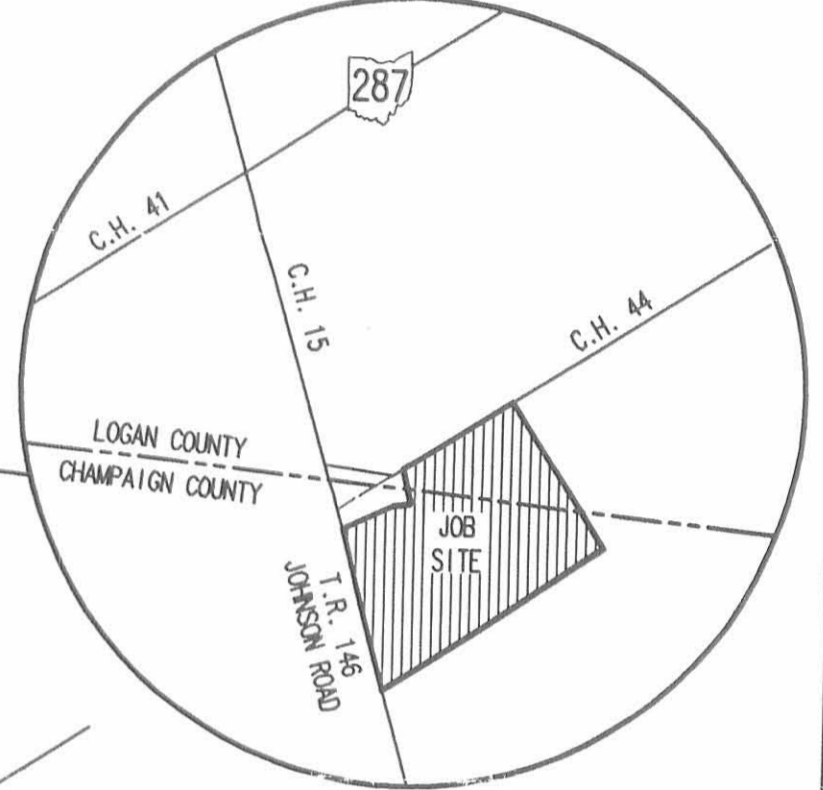
6607.1D2

2005 1-25 S.M.P.C.



- LEGEND:
- 5/8 INCH IRON ROD SET
 - 5/8 INCH IRON ROD FOUND
 - ⊙ 3/4 INCH IRON ROD FOUND
 - ⊕ RAILROAD SPIKE SET

FRANK M. SLEMONS
20.17 ACRES
LOGAN COUNTY O.R. 189, PG. 444
CHAMPAIGN COUNTY O.R. 110, PG. 88
TRACT V, PARCEL FOUR



VICINITY MAP
NOT TO SCALE

109.633 ACRES
OF WHICH 2.227 ACRES ARE WITHIN
THE HIGHWAY RIGHTS-OF-WAY

BETTY JO WELTY
AND JOHN WELTY
113.526 ACRES
LOGAN COUNTY O.R. 589, PG. 883
CHAMPAIGN COUNTY O.R. 401, PG. 2570

FRANK M. SLEMONS
39.43 ACRES
O.R. 110, PG. 88
TRACT X

**SURVEY OF 109.633 ACRES OUT OF THE
BETTY JO WELTY
AND JOHN WELTY
113.526 ACRE TRACT
OFFICIAL RECORD 589, PAGE 883
VIRGINIA MILITARY SURVEY 5049
ZANE TOWNSHIP
LOGAN COUNTY, OHIO
OFFICIAL RECORD 401, PAGE 2570
VIRGINIA MILITARY SURVEY 5049
WAYNE TOWNSHIP
CHAMPAIGN COUNTY, OHIO**

VIRGINIA K. REID
ORIGINAL 34.000 ACRES
O.R. 444, PG. 1398
TRACT TWO, PARCEL TWO

MARY DIANE DIEHL
7.451 ACRES
O.R. 235, PG. 199

MARY DIANE DIEHL
1.000 ACRE
O.R. 42, PG. 330



SURVEYED BY:
Jeffrey J. Lee
JEFFREY J. LEE
PROFESSIONAL SURVEYOR 6359
NOVEMBER 21, 2005

COPYRIGHT 2005 BY:
LEE SURVEYING & MAPPING CO., INC.
117 North Madriver Street
BELLEFONTAINE, OHIO 43311
(937) 593-7335

KSR D1105 4148105 L-4148-2

2 WORKING DAYS
BEFORE YOU DIG
CALL TOLL FREE **800-362-2764**
OHIO UTILITIES PROTECTION SERVICE

66071P

REC'D 12-1-05 8:51 AM CLK

Lee Surveying and Mapping Co., Inc.

Land Surveys • Topography • Subdivisions • Construction Layout

117 N. Madriver St.
Bellefontaine OH 43311



Phone: (937) 593-7335
Fax: (937) 593-7444

1975-2005 - 30 YEARS OF EXCELLENCE

**WELTY
8.000 ACRES**

Lying in Virginia Military Surveys 7117 and 5049, Zane Township, Logan County and Wayne Township, Champaign County.

Being out of the Betty Jo Welty original 42.898 acre tract as deeded and described in Official Record 159, Page 383 of the Logan County Records of Deeds and the Betty Jo Welty and John Welty 113.526 acre tract as deeded and described in Official Record 589, Page 883 of the Logan County Records of Deeds and Official Record 401, Page 2570 of the Champaign County Records of Deeds and being more particularly described as follows:

Beginning at a 1 inch iron bar found on the intersection of center-lines of Logan County Highway 15 and Logan County Highway 44.

THENCE, with the center-line of Logan County Highway 44 (60 feet wide), S 83°-27'-03"E, a distance of 671.40 feet to a 3/4 inch iron bolt found.

THENCE, with the west line of the Eric M. Svenson 1.719 acre tract (Logan County O.R. 261, Pg. 132 and Champaign County O.R. 64, Pg. 116), S 16°-59'-41"E, a distance of 387.10 feet to a 3/4 inch iron rod found, passing a 5/8 inch iron rod set at 32.72 feet, passing a 5/8 inch iron rod found on the south line of Virginia Military Survey 7117 and the north line of Virginia Military Survey 5049 at 70.85 feet and passing a 5/8 inch iron rod found at 356.04 feet.

THENCE, S 64°-36'-20"W, a distance of 628.14 feet to a 5/8 inch iron rod set on the center-line of Champaign County Township Road 146 (Johnson Road), passing a 5/8 inch iron rod set at 597.69 feet.

THENCE, with the center-line of Champaign County Township Road 146 (60 feet wide), the following two courses:

N 15°-32'-36"W, a distance of 232.00 feet to a 5/8 inch iron rod set on the north line of Virginia Military Survey 5049 and the south line of Virginia Military Survey 7117.

N 16°-21'-29"W, a distance of 339.07 feet to a 3/4 inch iron rod found on the north line of Wayne Township, Champaign County and the south line of Zane Township, Logan County.

THENCE, with the center-line of Logan County County Highway 15 (50 feet wide), N 18°-12'-55"W, a distance of 176.11 feet to the point of beginning.

Containing 8.000 acres, of which 0.932 acre is within the highway rights-of-way. There are 2.412 acres in Zane Township, Logan County, of which there is 0.545 acre within the highway right-of-way and 5.588 acres in Wayne Township, Champaign County, of which there is 0.387 acre within the highway right-of-way. There is 4.118 acres in Virginia Military Survey 7117 and 3.882 acres in Virginia Military Survey 5049.

The basis for bearings is the north line of Virginia Military Survey 5049, being N 57°-02'-33"E, and all other bearings are from angles and distances measured in a field survey by Lee Surveying and Mapping Co., Inc. on November 21, 2005 .



ORIGINAL STAMP IN GREEN

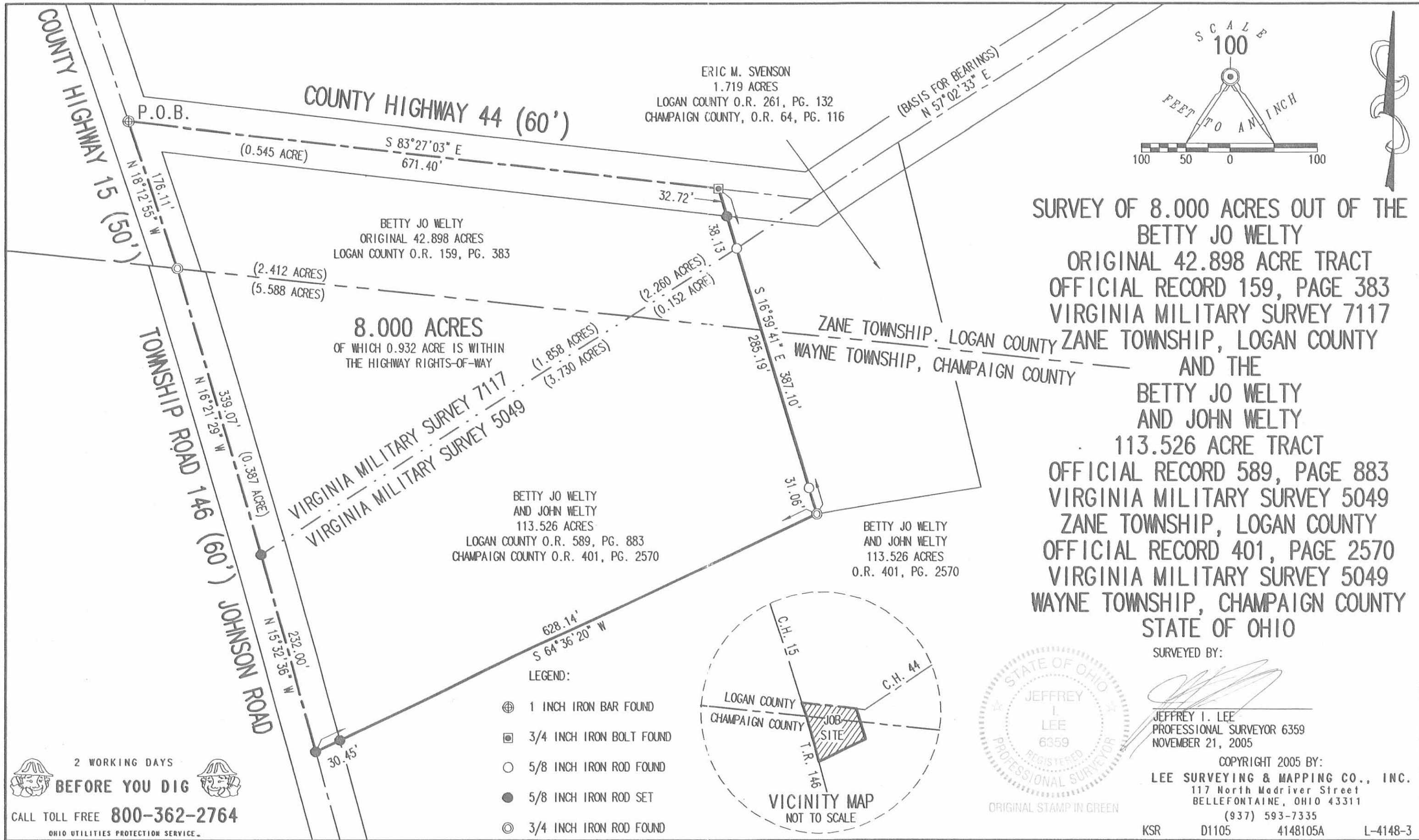
Description prepared by:

Jeffrey I. Lee
Jeffrey I. Lee
Professional Surveyor 6359
November 23, 2005

L-4148

660720

REC'D 12-1-05 S.M.J. OK



SURVEY OF 8.000 ACRES OUT OF THE
BETTY JO WELTY
ORIGINAL 42.898 ACRE TRACT
OFFICIAL RECORD 159, PAGE 383
VIRGINIA MILITARY SURVEY 7117
ZANE TOWNSHIP, LOGAN COUNTY
AND THE
BETTY JO WELTY
AND JOHN WELTY
113.526 ACRE TRACT
OFFICIAL RECORD 589, PAGE 883
VIRGINIA MILITARY SURVEY 5049
ZANE TOWNSHIP, LOGAN COUNTY
OFFICIAL RECORD 401, PAGE 2570
VIRGINIA MILITARY SURVEY 5049
WAYNE TOWNSHIP, CHAMPAIGN COUNTY
STATE OF OHIO

SURVEYED BY:

JEFFREY I. LEE
PROFESSIONAL SURVEYOR 6359
NOVEMBER 21, 2005

COPYRIGHT 2005 BY:
LEE SURVEYING & MAPPING CO., INC.
117 North Madriver Street
BELLEFONTAINE, OHIO 43311
(937) 593-7335
KSR D1105 4148105A L-4148-3

2 WORKING DAYS
BEFORE YOU DIG
CALL TOLL FREE **800-362-2764**
OHIO UTILITIES PROTECTION SERVICE.

6607 2P

BETTY JO AND JOHN WELTY SURVEY
5.010 ACRES
November 8, 2002

The following described 5.010 acre tract of land is situated in Virginia Military Surveys 5049 and 7117, Zane Township, Logan County and Wayne Township, Champaign County, Ohio, being part of Betty Jo Welty's original 42.898 acre tract described in Logan County Official Record 159, page 383 and part of Betty Jo and John Welty's 113.526 acre tract described in Logan County Official Record 589, page 883 and in Champaign County Official Record 401, page 2570, said 5.010 acre tract more particularly described as follows:

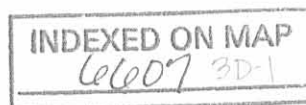
Beginning at a one-inch iron pin found at the intersection of the centerline of Logan County Road 44 (60 feet wide) with the centerline of Logan County Road 15 (50 feet wide), said iron pin being located at the northwest corner of the remainder of said original 42.898 acre tract;

Thence **South 83°26'52" East 671.40 feet**, following the centerline of Logan County Road 44 and the north line of the remainder of said original 42.898 acre tract, to a 3/4 inch iron bolt found at the northwest corner of Eric M. and Barbara H. Svenson's 1.719 acre tract described in Logan County Official Record 261, page 132 and in Champaign County Official Record 164, page 116;

Thence **South 17°01'10" East 355.91 feet**, departing from the centerline of Logan County Road 44, following the west line of said 1.719 acre tract and the east line of the remainder of said original 42.898 acre tract, passing a 5/8 inch iron pin found at 32.73 feet and at 70.79 feet a 5/8 inch iron pin found at the southeast corner of the remainder of said original 42.898 acre tract and at an angle point in the north line of said 113.526 acre tract, said iron pin also being in the south line of V.M.S. 7117 and in the north line of V.M.S. 5049, entering V.M.S. 5049 and following the north line of said 113.526 acre tract thereafter, leaving Zane Township, Logan County and entering Wayne Township, Champaign County, to an iron pin set;

Thence **North 83°26'52" West 669.60 feet**, departing from the west line of said 1.719 acre tract, crossing said 113.526 acre tract and the remainder of said original 42.898 acre tract, departing from V.M.S. 5049 and crossing V.M.S. 7117, passing a 5/8 inch iron pin set at 637.02 feet, to a railroad spike set in the centerline of Wayne Township Road 146 (60 feet wide) and in the west line of V.M.S. 7117;

Thence **North 16°22'49" West 180.56 feet**, following the centerline of Wayne Township Road 146, the west line of V.M.S. 7117, and the west line of the remainder of said original 42.898 acre tract, to a 3/4 inch iron pin found in the north line of Wayne Township, Champaign County and in the south line of Zane Township, Logan County, said iron pin also marking the southernmost point in the centerline of Logan County Road 15;



Thence **North 18°12'38" West 176.12 feet**, following the centerline of Logan County Road 15, the west line of V.M.S. 7117, and the west line of the remainder of said original 42.898 acre tract, to the **place of beginning, containing 5.010 acres**, more or less, and subject to all valid easements and restrictions of record.

Of the above described 5.010 acre tract, 0.669 acre is within the road right-of-way (0.125 acre being within Wayne Township Road 146 and 0.544 acre being within Logan County Road 44 and Logan County Road 15), also 3.717 acres are part of said original 42.898 acre tract (2.215 acre within Zane Township, Logan County and 1.502 acre within Wayne Township, Champaign County) and 1.293 acres are part of said 113.526 acre tract (0.125 acre within Zane Township, Logan County and 1.168 acre within Wayne Township, Champaign County).

The above description was prepared from an actual field survey made by George A. Blackburn, Registered Surveyor #7873, during the month of November 2002. Iron pins set are 5/8 inch by 30 inch reinforcing rods with plastic caps marked "Blackburn RS #7873." Bearings indicated herein are based on the centerline of Logan County Road 44 being South 83°26'52" East.

Description prepared by:

George A. Blackburn Major

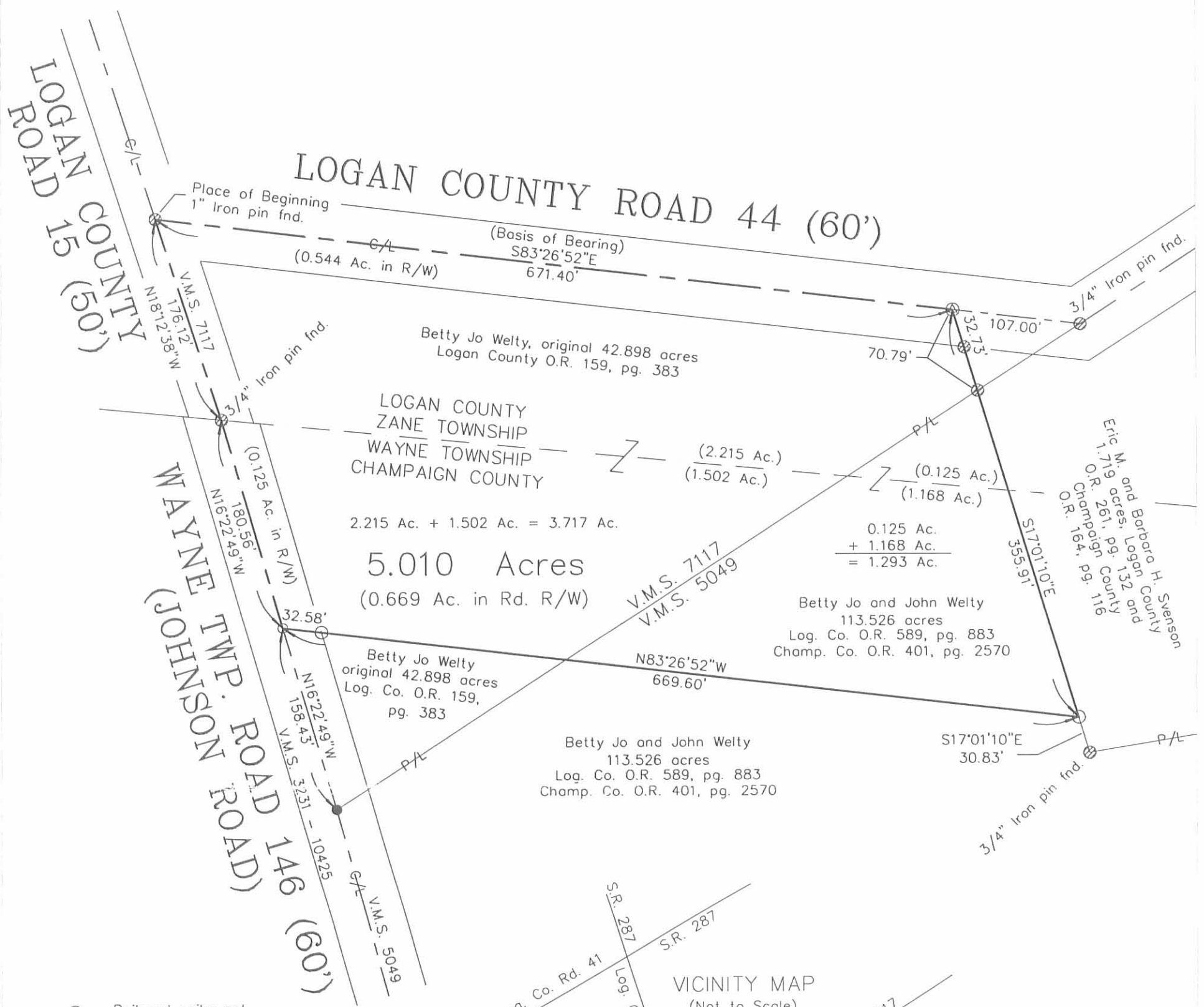
George A. Blackburn, R.S. #7873
12125 Green Street
Middleburg, Ohio 43336
(937) 666-5605



INDEXED ON MAP
6607 302

REV'D 11-19-02 SWJ/ak

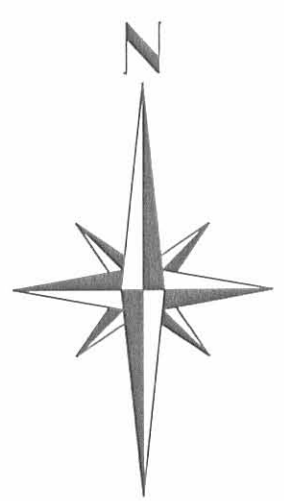
V.M.S. 5049 AND V.M.S. 7117 ZANE TOWNSHIP, LOGAN COUNTY AND WAYNE TOWNSHIP, CHAMPAIGN COUNTY, OHIO



- Railroad spike set
- Railroad spike found
- ⊗ 3/4" Iron bolt found
- 5/8" Iron pin set
- ⊗ 5/8" Iron pin found unless otherwise noted

BETTY JO AND JOHN WELTY SURVEY

Being a 5.010 acre tract split out of Betty Jo Welty's original 42.898 acre tract described in Logan County Official Record 159, page 383 and out of Betty Jo and John Welty's 113.526 acre tract described in Logan County Official Record 589, page 883 and in Champaign County Official Record 401, page 2570.



I hereby certify that this plot was prepared from an actual field survey and that monuments were placed as indicated hereon.

George A. Blackburn 11/1/02
George A. Blackburn, R.S. 7873

INDEXED ON MAP
6607 3P

Filename: Welty 11-02
Scale: 1" = 100'
Date: 11/8/02
F.B. 8, pg. 23

BLACKBURN SURVEYING

12125 GREEN STREET
MIDDLEBURG, OHIO 43336
(937) 666-5605

REV 7-27-00 SMJ OK ✓

DESCRIPTION OF 4.116 ACRES

Situated in the State of Ohio, being part in the County of Logan, Township of Zane, in V.M.S. 7117, and being part in the County of Champaign, Township of Wayne, in V.M.S. 7117, of "The Virginia Military District - 1784", being a new survey of part of a 41.254 acres tract as conveyed to Betty Jo Welty by Official Records Volume 159, Page 383 of the Logan County Recorder's Office, and being bounded and described as follows:

Beginning at a 1" iron pin found in the centerline intersection of County Road No. 15 and County Road No. 44 (Note: Reference bearing on the centerline of County Road No. 15 to the north of County Road No. 44 used as North 17°30'00" West as shown on the road note of County Road 15.);

Thence, from said Point of Beginning and running with the centerline of County Road No. 44 (60' wide R/W), South 83°27'04" East a distance of 671.41 feet to a 3/4" bolt found at the northwest corner of a 1.719 acres tract as conveyed to Eric M. Svenson, et. ux. by Official Records Volume 261, Page 132 of the Logan County Recorder's Office and by Official Records Volume 164, Page 116 of the Champaign County Recorder's Office;

Thence, leaving the road with the west line of said Svenson property, South 17°01'44" East a distance of 70.79 feet to an iron pin set in the south line of V.M.S. 7117 and the north line of V.M.S. 5049 and 5043, passing through an iron pin set at a distance of plus 22.50 feet;

Thence, with the south line of V.M.S. 7117 and the north line of V.M.S. 5049 and 5043, South 57°02'33" West a distance of 640.07 feet to a railroad spike set in the centerline of Township Road No. 146 (Johnson Road - 50' wide R/W) in Wayne Township, Champaign County, passing over the Logan County - Champaign County line at a distance of plus 133.43 feet and passing through two iron pins set at distances of plus 510.07 feet and plus 610.07 feet, respectively;

Thence, with the centerline of Township Road No. 146, the west line of V.M.S. 7117, and the east line of V.M.S. 3231 and 10425, North 16°23'01" West a distance of 338.95 feet to a 5/8" iron pin found in the Logan County - Champaign County line;

Thence, with the centerline of County Road No. 15, the west line of V.M.S. 7117, and the east line of V.M.S. 3231 and 10425, North 18°13'32" West a distance of 176.12 feet to The Point of Beginning;

Containing 4.116 acres, more or less, of which:

2.227 acres are in V.M.S. 7117 in Zane Township, Logan County and

1.889 acres are in V.M.S. 7117 in Wayne Township, Champaign County.

Note: 0.563 acres are in the right-of-way of public roads in Logan County and

0.194 acres are in the right-of-way of public roads in Champaign County.

Subject to all legal right-of-ways, easement, restrictions, reservations, and zoning regulations of record.

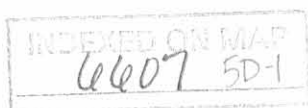
Subject to the right-of-way of County Road No. 15 (Logan County).

Subject to the right-of-way of County Road No. 44 (Logan County).

Subject to the right-of-way of Township Road No. 146 (Champaign County).

Subject to the 100-Year Flood Plain restrictions, if applicable.

All iron pins set are 5/8" x 30" rebar capped and labeled "Claus 6456".



The bearings in this description are for angle calculations only and are based on the centerline of County Road No. 15 to the north of County Road No. 44 used as North 17°30'00" West as shown on the road survey of County Road 15 in Logan County Field Book 558, Page 36.

A plat of the above-described survey has been submitted for file at the County Engineer's Office.

The above description prepared by Roger W. Claus, Registered Surveyor No. 6456, based on an actual field survey of July 9, 2000; said survey being subject to any facts that may be disclosed in a full and accurate title search.

Prior deed: Official Records Volume 159, Page 383 Logan County Recorder's Office
Note: No deed found recorded in Champaign County.

Surveyor: Roger W. Claus
Date: 07-26-00



FILED
6607 50-2

SURVEY PLAT FOR BETTYJO WELTY

Line	Bearing	Distance
1	N 75°28'35"E	25.00'
2	N 75°28'35"E	351.37'
3	S 34°39'50"E	100.00'
4	S 34°39'50"E	50.00'
5	S 57°02'33"W	277.87'
6	S 57°02'33"W	118.66'
7	N 83°27'04"W	107.00'
8	S 17°01'44"E	22.50'
9	S 17°01'44"E	48.29'
10	S 57°02'33"W	133.43'
11	S 57°02'33"W	100.00'
12	S 57°02'33"W	30.00'
13	N 16°23'01"W	338.95'
14	N 18°13'32"W	176.12'
15	N 17°30'00"W	31.17'

THE BEARINGS ON THIS PLAT ARE FOR ANGLE CALCULATIONS ONLY AND ARE BASED ON AN ASSUMED BEARING ON THE CENTERLINE OF COUNTY ROAD 15 (FORMER HAINES PIKE - 50' R/W) TO THE NORTH OF COUNTY ROAD NO. 44 USED AS NORTH 17°30'00" WEST AS SHOWN IN LOGAN COUNTY FIELD BOOK 558, PG. 36 AND IN F. T. RECORD 5, PG. 441.

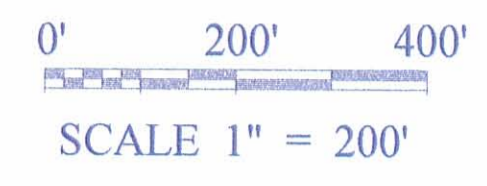
SITUATED IN THE STATE OF OHIO, BEING PART IN THE COUNTY OF LOGAN, TOWNSHIP OF ZANE, IN V.M.S. SURVEY NO. 7117, AND BEING PART IN THE COUNTY OF CHAMPAIGN, TOWNSHIP OF WAYNE, IN V.M.S. 7117, OF "THE VIRGINIA MILITARY DISTRICT - 1784"

PERTINENT DOCUMENTS

- (1) ALL DEEDS AS SHOWN.
- (2) COUNTY TAX MAPS.
- (3) U.S.G.S. QUAD. MAP "NORTH LEWISBURG"
- (4) U.S.G.S. QUAD. MAP "KINGS CREEK"
- (5) ASCS AERIAL PHOTO
- (6) LOGAN CO. SURVEY RD. 15 FROM RD. 44 TO S.H. 607 F.B. 558, PG. 36 AND F.T. RECORD 5, PG. 441
- (7) SURVEY PLAT BY CLAYTON M. LEE (3-17-81)
- (8) SURVEY PLAT BY CLAYTON M. LEE (5-81)
- (9) SURVEY PLAT BY CLAYTON M. LEE (7-11-79)
- (10) SURVEY PLAT BY LESLIE H. GEESLIN (6-24-99)
- (11) SURVEY PLAT BY PAUL R. CLAPSADDLE (10-2-74)
- (12) V.M.S. SURVEY 3230 (SURVEY RECORD "C", PG. 24)
- (13) V.M.S. SURVEY 9657 AND 9740 (DEC. 1, 1818)
- (14) V.M.S. SURVEY 5049 (JAN. 22, 1807)
- (15) V.M.S. SURVEY 7117 (MAY 25, 1832)
- (16) V.M.S. SURVEY 3230 (JUNE 1, 1798)
- (17) V.M.S. SURVEY 5049 (JAN. 22, 1807)
- (18) V.M.S. SURVEY 3231 (NOV. 7, 1823)
- (19) V.M.S. INDEX MAP IN CHAMPAIGN CO., WAYNE TWP.
- (20) ROAD R/W MAP OF ROAD 44 LOGAN CO. MILEAGE LOG POINT 0.00 TO 4.24

SURVEY OF 4.116 ACRES FOR BETTYJO WELTY
2.227 ACRES IN LOGAN CO.
1.889 ACRES IN CHAMPAIGN CO.
OUT OF O.R. VOL. 159, PG. 383 LOGAN CO.
(ORIGINAL DEED 41.254 AC.)
NO DEED FOUND RECORDED IN CHAMPAIGN CO.

0.563 ACRE IN PUBLIC ROAD R/W (LOGAN CO.)
0.194 ACRE IN PUBLIC ROAD R/W (CHAMPAIGN CO.)



- ▲ = MAG. NAIL SET
- = STEEL MONUMENT BOX FOUND IN ROAD "LOGAN COUNTY ENGINEER"
- ⊙ = 5/8" IRON PIN FOUND CAPPED "S-6034"
- = 1" IRON PIN FOUND UNCAPPED.
- ⊗ = 3/4" IRON PIN FOUND UNCAPPED.
- ⊘ = 5/8" IRON PIN FOUND UNCAPPED.
- ⊙ = 3/4" BOLT FOUND
- ⊙ = 1/2" X 30" IRON PIN FOUND CAPPED "CLAUS 6456".
- ⊙ = 5/8" X 30" IRON PIN SET CAPPED "CLAUS 6456"
- ⊙ = 1/2" IRON PIN FOUND UNCAPPED.
- ⊙ = 5/8" IRON PIN FOUND CAPPED "L. GEESLIN S-5248"
- ⊙ = 5/8" IRON PIN FOUND CAPPED "LEE PS-6359"
- ⊙ = 5/8" IRON PIN FOUND CAPPED "CLAPSADDLE RS-6140"
- ⊕ = CONCRETE MONUMENT FOUND
- ⊞ = MARKED STONE FOUND.
- ⊟ = UN-MARKED STONE FOUND
- + = SURVEY ANGLE POINT
- ▲ = RAILROAD SPIKE SET
- ▲ = RAILROAD SPIKE FOUND.
- ⊙ = TREE WITH WIRE FOUND
- = EXISTING PROPERTY LINES
- x-x- = FENCE EVIDENCE FOUND
- = LINES OF THIS SURVEY

SUBJECT TO ALL LEGAL RIGHT-OF-WAYS, EASEMENTS, RESTRICTIONS, RESERVATIONS, AND ZONING REGULATIONS OF RECORD. SUBJECT TO 100 YEAR FLOOD PLAIN RESTRICTIONS, IF APPLICABLE. SUBJECT TO ANY FACTS THAT MAY BE DISCLOSED IN A FULL AND ACCURATE TITLE SEARCH.



SURVEYORS CERTIFICATION:

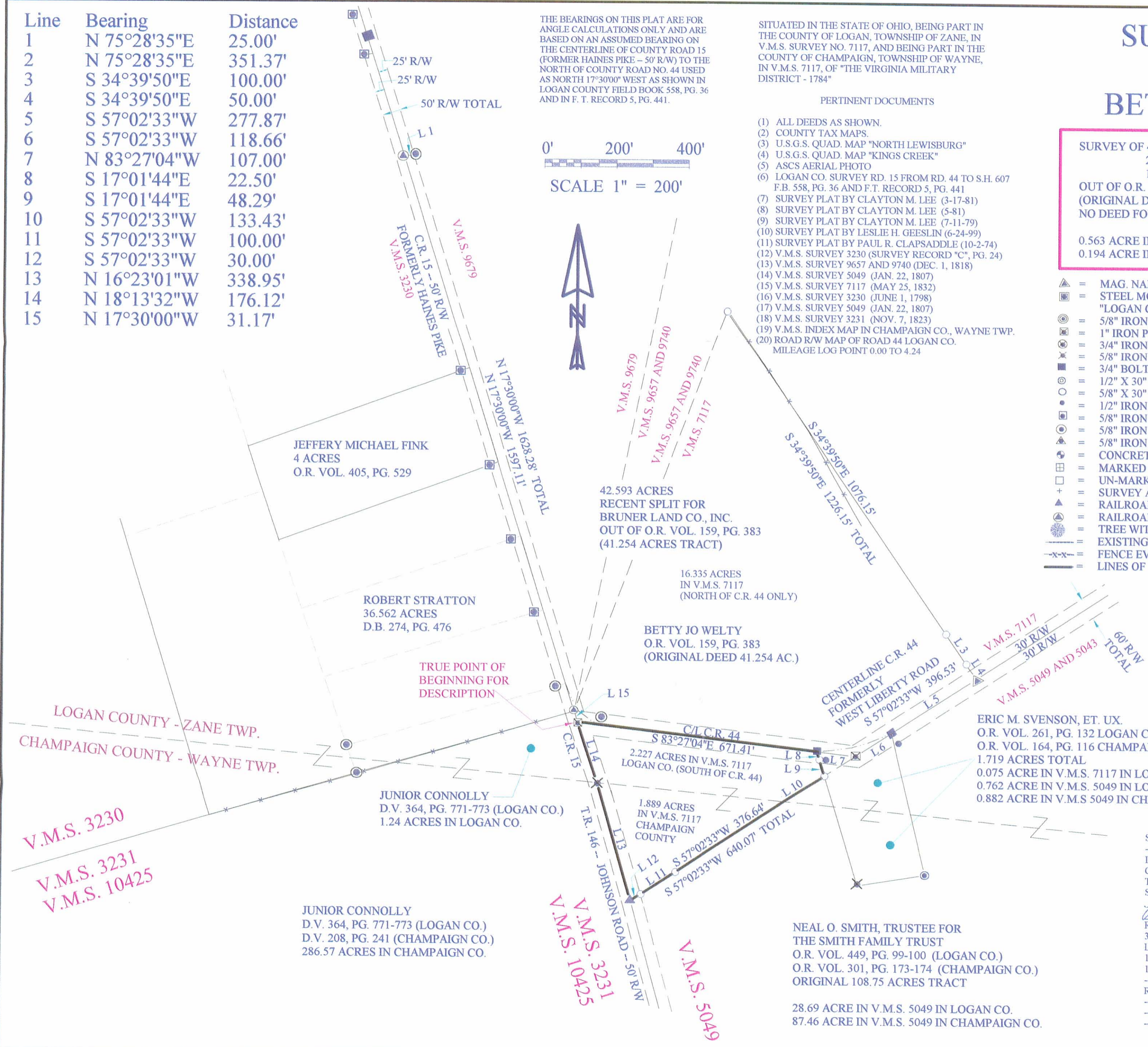
I HEREBY CERTIFY THAT THIS PLAT IS TRUE AND CORRECT TO THE BEST OF MY KNOWLEDGE AND THAT IT WAS PREPARED FROM AN ACTUAL FIELD SURVEY OF THE PREMISES.

Roger W. Claus 07-26-00
 ROGER W. CLAUS, REG. SURVEYOR 6456 DATE:
 33310 CHRISTMAN RIDGE ROAD
 LEWISVILLE, OHIO 43754
 1-740-567-3168
 1-740-567-3106 fax

REVISIONS	DATE	INITIALS

NEAL O. SMITH, TRUSTEE FOR THE SMITH FAMILY TRUST
 O.R. VOL. 449, PG. 99-100 (LOGAN CO.)
 O.R. VOL. 301, PG. 173-174 (CHAMPAIGN CO.)
 ORIGINAL 108.75 ACRES TRACT

28.69 ACRE IN V.M.S. 5049 IN LOGAN CO.
 87.46 ACRE IN V.M.S. 5049 IN CHAMPAIGN CO.



INDEXED ON MAP
6/6/07 5P

NEAL SMITH SURVEY
113.526 ACRES
January 4, 2001
Revised March 12, 2001

The following described 113.526 acre tract of land is situated in Virginia Military Survey 5049, Zane Township, Logan County, Ohio, and Wayne Township, Champaign County, Ohio and being all of an original 107.106 acre tract deeded to Neal O. Smith (1/2 interest), Trustee of the Smith Family Trust, dated April 7, 2000, by Logan County Official Record 449, page 99 and Champaign County Official Record 301, page 173, and also deeded to Donna Graham (1/2 interest) by Logan County Official Record 159, page 387 and Champaign County Official Record 89, page 508, said 113.526 acre tract more particularly described as follows:

Beginning at a railroad spike found in the centerline of Wayne Township Road 146 (Johnson Road, 60 feet wide), at the south corner of V.M.S. 7117, the westernmost corner of V.M.S. 5049, the westernmost corner of said original 107.106 acre tract, and the south corner of Betty Jo Welty's original 42.898 acre tract described in Logan County Official Record 159, page 383, said railroad spike also being in the northeast line of V.M.S. 3231 - 10425 and marking the **place of beginning**;

Thence **North 57°02'33" East 640.12 feet**, departing from the centerline of Wayne Township Road 146 and the northeast line of V.M.S. 3231 - 10425, following the southeast line of V.M.S. 7117, the northwest line of V.M.S. 5049, the southeast line of said original 42.898 acre tract, and the northwest line of said original 107.106 acre tract, passing a 5/8 inch iron pin found at 29.95 feet, leaving Champaign County and entering Logan County, to a 5/8 inch iron pin found in the southwest line of Eric M. and Barbara H. Svenson's 1.719 acre tract described Logan County Official Record 261, page 132, and in Champaign County Official Record 164, page 116;

Thence **South 17°01'10" East 316.20 feet**, departing from the southeast line of V.M.S. 7117 and said original 42.898 acre tract, entering V.M.S. 5049, following the southwest line of said 1.719 acre tract and the northwest line of said original 107.106 acre tract, leaving Logan County and Entering Champaign County, to a 3/4 inch iron pin found;

Thence **North 80°42'17" East 188.57 feet**, following the south line of said 1.719 acre tract and the northwest line of said original 107.106 acre tract, to a 5/8 inch iron pin found;

Thence **North 13°25'11" West 402.92 feet**, following the east line of said 1.719 acre tract and the northwest line of said original 107.106 acre tract, leaving Champaign County and entering Logan County, passing an iron pin set at 371.09 feet, to a 3/4 inch bolt found in the centerline of Logan County Road 44 (60 feet wide), in the southeast line of V.M.S. 7117, and in the northwest line of V.M.S. 5049;

Thence **North 57°02'33" East 1440.97 feet**, following the centerline of Logan County Road 44, the southeast line of V.M.S. 7117, the northwest line of V.M.S. 5049, and the northwest line of said original 107.106 acre tract, to 3/4 inch iron pin found in a monument box at the westernmost corner of Frank M. Slemmons' Tract V, Parcel Four, 20.17 acres, described in Logan County Official Record 189, page 444 and in Champaign County Official Record 110, page 88;

Thence **South 32°45'03" East 1929.21 feet**, departing from the centerline of Logan County Road 44 and the southeast line of V.M.S. 7117, entering V.M.S. 5049, following the southwest line of said 20.17 acre tract and the northeast line of said original 107.106 acre tract, passing an iron pin set at 30.00 feet, leaving Logan County and entering Champaign County, to an iron pin set at an angle point in the northwest line of Frank M. Slemmons' Tract X, 39.43 acres, described in Logan County Official Record 189, page 444, and in Champaign County Official Record 110, page 88;

INDEXED ON MAP
66074D1

Thence **South 57° 03'05" West 2898.29 feet**, departing from the southwest line of said 20.17 acre tract, following the southeast line of said original 107.106 acre tract and the northwest line of said 39.43 acre tract, passing at 787.71 feet a 5/8 inch iron pin found at the north corner of Virginia K. Reid's Tract Two, Parcel Two, originally 34.00 acres, described in Champaign County Official Record 104, page 230, following thereafter, the northwest line of said original 34.00 acre tract, the northwest line of Mary Diane Diehl's 7.451 acre tract described in Champaign County Official Record 235, page 199, and the northwest line of Mary Diane Diehl's 1.000 acre tract described in Champaign County Official Record 42, page 330, also passing a 5/8 inch iron pin found at 2866.96 feet, to an iron pin set in the centerline of Wayne Township Road 146 (60 feet wide), in the northeast line of V.M.S. 3231 – 10425, and in the southwest line V.M.S. 5049;

Thence **North 16°08' 39" West 123.02 feet**, following the centerline of Wayne Township Road 146 (60 feet wide), the northeast line of V.M.S. 3231 - 10425, the southwest line of V.M.S. 5049, and the southwest line of said original 107.106 acre tract, to a 5/8 inch iron pin found;

Thence **North 15°32'44" West 1897.96 feet**, continuing with the centerline of Wayne Township Road 146, the northeast line of V.M.S. 3231 - 10425, the southwest line of V.M.S. 5049, and the southwest line of said original 107.106 acre tract, to the **place of beginning, containing 113.526 acres**, more or less, and subject to all valid easements and restrictions of record.

Of the above described 113.526 acre tract, 0.996 acre is within the road right of way of Logan County Road 44, 1.392 acres are within the road right of way of Wayne Township Road 146, 28.168 acres are within Zane Township, Logan County and 85.358 acres are within Wayne Township, Champaign County.

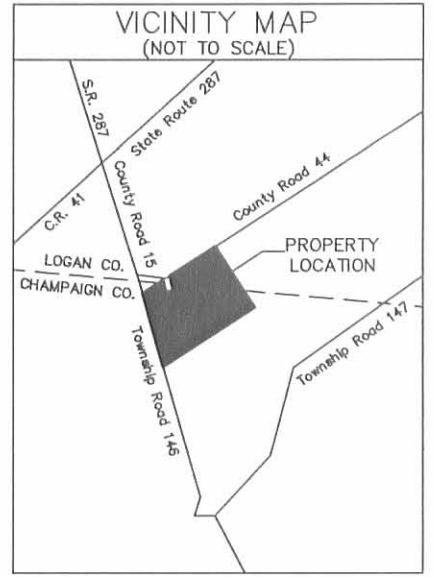
The above description was prepared from an actual field survey made by George A. Blackburn, Registered Surveyor #7873, during the month of January 2001. Iron pins set are 5/8 inch by 30 inch reinforcing rods with plastic caps marked "Blackburn RS #7873." Bearings indicated herein are based on the centerline of Logan County Road 44 being North 57°02'33" East.

Description prepared by: George A. Blackburn
George A. Blackburn, R.S. #7873
12125 Green Street
Middleburg, Ohio 43336
(937) 666-5605

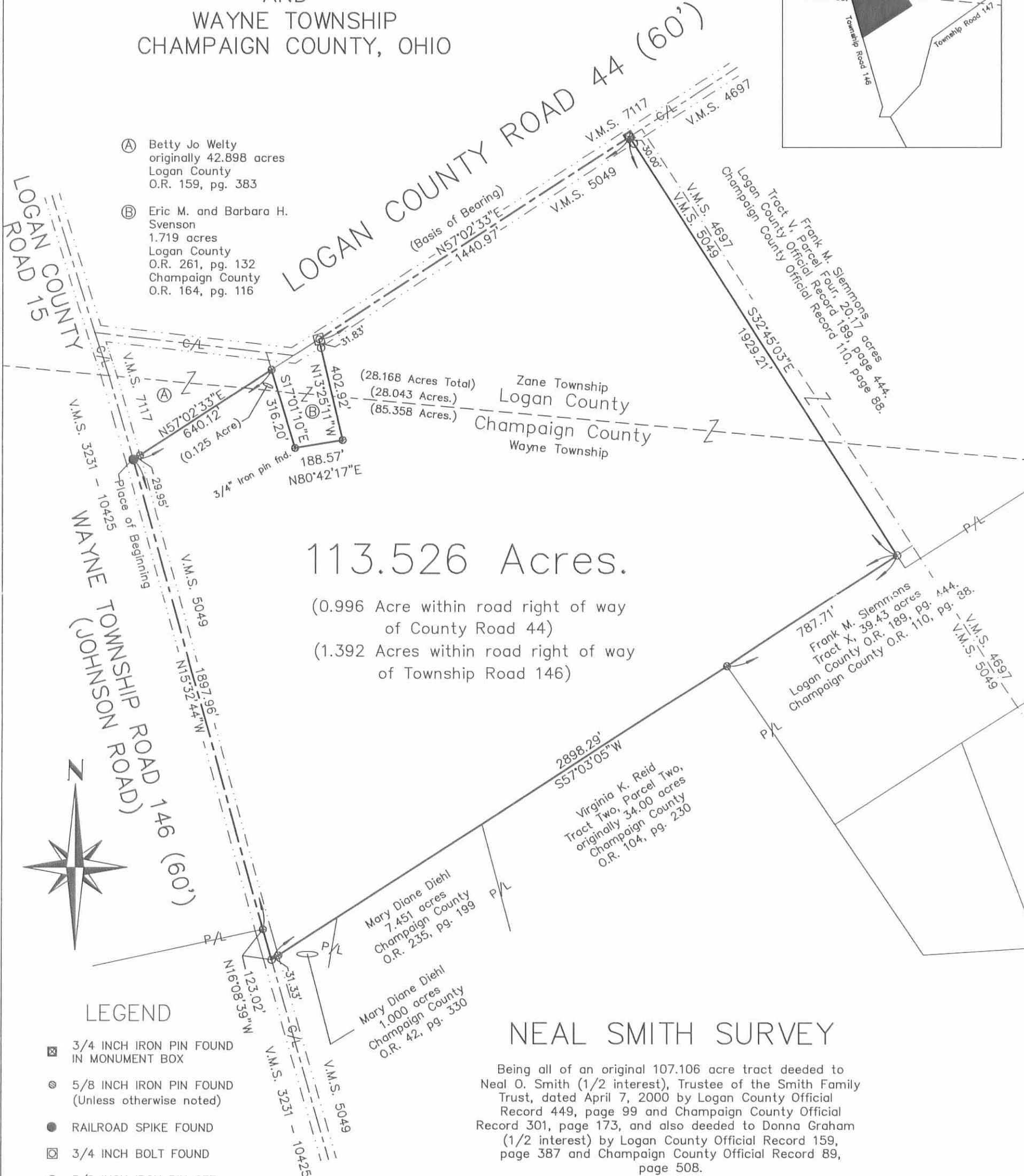


INDEXED ON MAP
66076D2

VIRGINIA MILITARY SURVEY 5049
 ZANE TOWNSHIP
 LOGAN COUNTY, OHIO
 AND
 WAYNE TOWNSHIP
 CHAMPAIGN COUNTY, OHIO

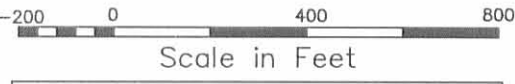


- Ⓐ Betty Jo Welty
originally 42.898 acres
Logan County
O.R. 159, pg. 383
- Ⓑ Eric M. and Barbara H. Svenson
1.719 acres
Logan County
O.R. 261, pg. 132
Champaign County
O.R. 164, pg. 116



LEGEND

- ☒ 3/4 INCH IRON PIN FOUND IN MONUMENT BOX
- ⊙ 5/8 INCH IRON PIN FOUND (Unless otherwise noted)
- RAILROAD SPIKE FOUND
- ☐ 3/4 INCH BOLT FOUND
- 5/8 INCH IRON PIN SET



BLACKBURN SURVEYING
 George A. Blackburn, P.S.
 12125 Green Street
 Middleburg, Ohio 43336
 (937) 666-5605

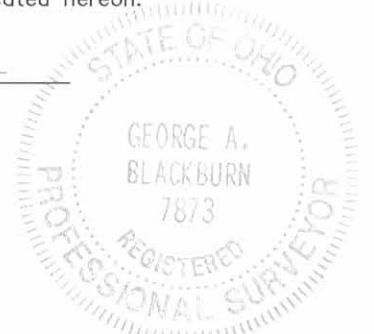
Filename: Smith 1-02-01.FLX
 Scale: 1" = 400'
 Date: 1-04-01
 Revised: 3-12-01
 F.B. 5, pg. 59

NEAL SMITH SURVEY

Being all of an original 107.106 acre tract deeded to Neal O. Smith (1/2 interest), Trustee of the Smith Family Trust, dated April 7, 2000 by Logan County Official Record 449, page 99 and Champaign County Official Record 301, page 173, and also deeded to Donna Graham (1/2 interest) by Logan County Official Record 159, page 387 and Champaign County Official Record 89, page 508.

I hereby certify that this plat was prepared from an actual field survey and that monuments were placed as indicated hereon.

George A. Blackburn
 George A. Blackburn, R.S. # 7873



INDEXED ON MAP
 66074P

Lee Surveying and Mapping Co.



Farm Surveys • Lot Surveys • Topography • Subdivisions • Construction Layout

855 EAST SANDUSKY AVENUE
MONTAINE, OHIO 43311

(513) 593-5780

CLAYTON M. LEE, P.S.
JEFFREY I. LEE, P.S.

PATRICK TO SCHROEDER

Lying in V.M.S. 5049 in both Zane Township, Logan County and Wayne Township, Champaign County and also V.M.S. 7117 in Zane Township, Logan County, Ohio.

Being out of those lands lying in the name of Ruby Patrick as deeded and described in Champaign County Records, Volume 217, Page 1015 (Tract 1) and Logan County Records, Volume 359, Page 226 (Tract 1 and Tract 2) and more particularly described as follows:

Beginning at an iron bolt set on the center-line of Logan County Road 44. This point lying S 84°-04'-20" E, along said center-line from the center-line of Logan County Road 15.

THENCE, continuing with the center-line of County Road 44, S 84°-04'-40" E, a distance of 107.00 feet to an iron rod set in an angle of said County Road 44 on the line between V.M.S. 7117 and V.M.S. 5049.

THENCE, continuing with the said V.M.S. line, the same being the center-line of said County Road 44, N 56°-25' E, a distance of 118.60 feet to a bolt.

THENCE, S 14°-04' E, a distance of 402.68 feet to an iron rod. Passing an iron rod set on the road right-of-way line at 21.22 feet.

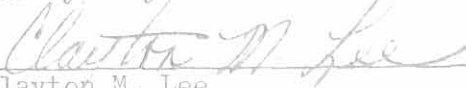
THENCE, S 80°-02' W, a distance of 188.52 feet to an iron rod.

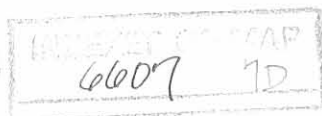
THENCE, N 17°-40' W, a distance of 386.94 feet to the point of beginning. Passing an iron rod set on the road right-of-way line at 365.12 feet.

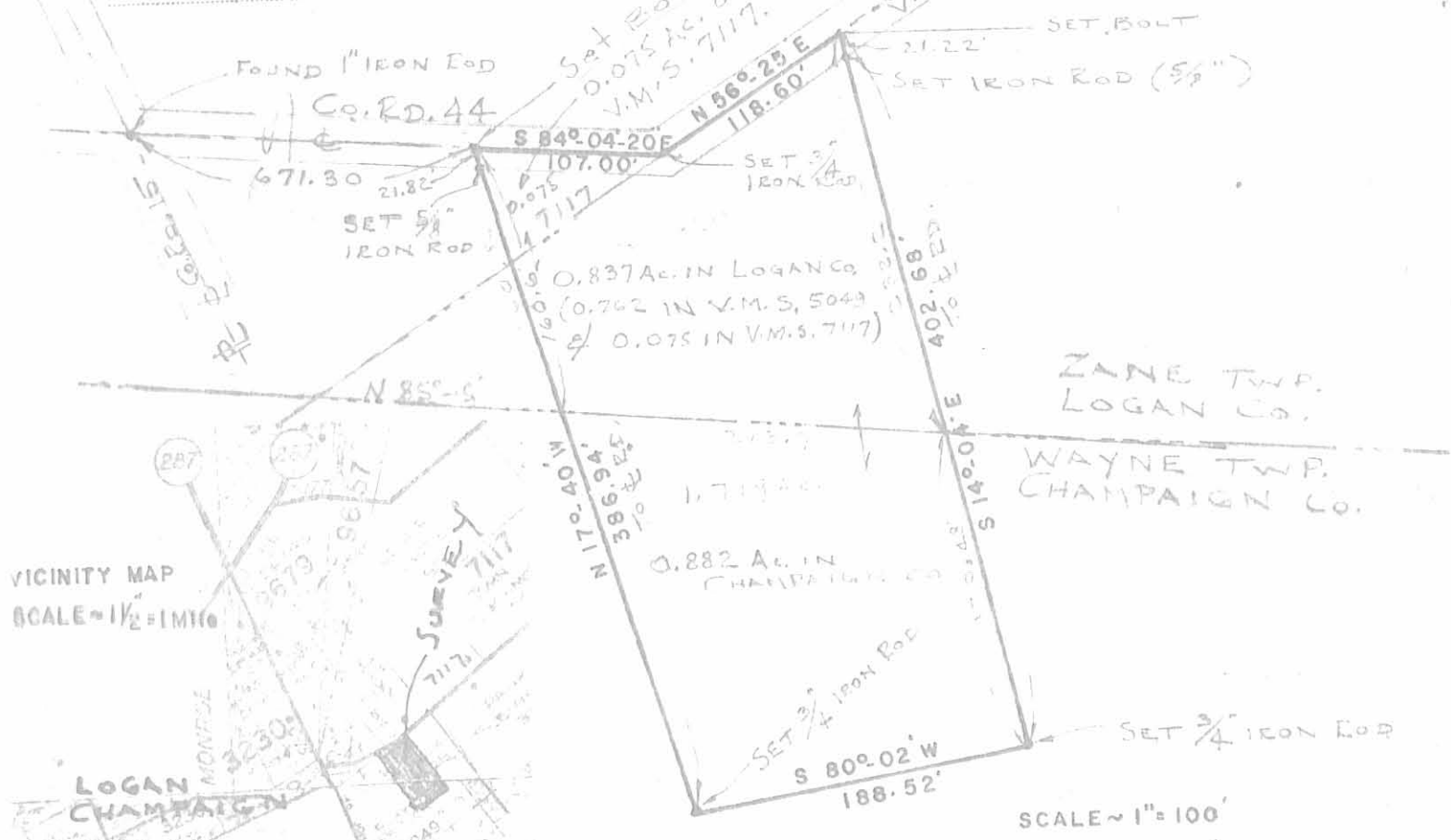
Containing 1.719 acres of which 0.882 acre lies in V.M.S. 5049, Wayne Township, Champaign County; 0.762 acre lies in V.M.S. 5049, Zane Township, Logan County; 0.075 acre lies in V.M.S. 7117, Zane Township, Logan County.

Last previous deed reference: Champaign County Volume 217, Page 1015
Logan County Volume 359, Page 226

Surveyed By:


Clayton M. Lee
Reg. Surveyor No. 6181
3-26-81





ACREAGE BREAK-DOWN

TRACT 1
 CHAMPAIGN CO. (Vol. 217, Pg. 1015)
 0.882 AC. IN V.M.S. 5049, WAYNE TWP.

LOGAN CO. (Vol. 359, Pg. 226)
 0.762 AC. IN V.M.S. 5049 (Vol. 359, Pg. 226)
 TRACT 1

0.075 AC. IN V.M.S. 7117 (TRACT 2)

TOTAL ~ 0.837 IN ZANE TWP, LOGAN CO.
 GRAND TOTAL = 1.719 ACRES



SURVEY OF 1.719 ACRES OUT OF THE RUBY PATRICK LANDS
 LOCATED IN V.M.S. 5049, WAYNE TWP, CHAMPAIGN CO. (Vol. 217, Pg. 1015)
 & V.M.S. 5049 And V.M.S. 7117, ZANE TWP, LOGAN CO. (Vol. 359, Pg. 226)
 STATE OF OHIO.

6607 7P
 INDEXED ON MAP



By: Clayton M. Lee
 Clayton M. Lee
 Reg. Surveyor 6181
 3-17-81

LEE SURVEYING & MAPPING CO.
 855 E. Sandusky Ave.
 BELLEFONTAINE, OHIO 43311
 (513) 593-5780

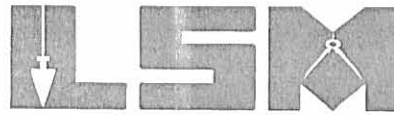
1

REC'D 3-15-06 JMY OK

Lee Surveying and Mapping Co., Inc.

Land Surveys • Topography • Subdivisions • Construction Layout

117 N. Madriver St.
Bellefontaine OH 43311



Phone: (937) 593-7335
Fax: (937) 593-7444

1975-2005 - 30 YEARS OF EXCELLENCE

COUNTRYTME GROVE CITY LTD.

**LOT 8-G
20.324 ACRES**

Lying in Virginia Military Survey 5049, Zane Township, Logan County and Wayne Township, Champaign County, Ohio.

Being out of the Countrytyme Grove City Ltd. 109.633 acre tract as deeded and described in Official Record 814, Page 876 of the Logan County Records of Deeds and Official Record 451, Page 11 of the Champaign County Records of Deeds and being more particularly described as follows:

Beginning at a 3/4 inch iron rod found on the center-line of Logan County Highway 15 and Champaign County Township Road 146 (Johnson Road) at the intersection with the south line of Logan County and the north line of Champaign County.

THENCE, with the center-line of Champaign County Township Road 146 (60 feet wide) the following two courses:

S 16°-21'-29"E, a distance of 339.07 feet to a 5/8 inch iron rod set on the north line of Virginia Military Survey 5049.

S 15°-32'-36"E, a distance of 232.00 feet to a 5/8 inch iron rod set.

THENCE, N 64°-36'-20"E, a distance of 628.14 feet to a 3/4 inch iron rod found, passing a 5/8 inch iron rod set at 30.45 feet.

THENCE, with the south line of the Eric M. Svenson 1.719 acre tract (Logan County O.R. 261, Pg. 132, Champaign County O.R. 64, Pg. 116), N 80°-42'-17"E, a distance of 188.57 feet to a 5/8 inch iron rod set at the TRUE POINT OF BEGINNING.

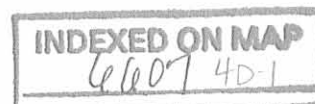
THENCE, with the east line of the said 1.719 acre tract, N 13°-25'-11"W, passing into Logan County, a distance of 402.92 feet to a railroad spike set on the north line of Virginia Military Survey 5049 and the center-line of Logan County Highway 44, passing a 5/8 inch iron rod found at 371.09 feet.

THENCE, with the north line of Virginia Military Survey 5049 and the center-line of Logan County Highway 44 (60 feet wide), N 57°-02'-33"E, a distance of 150.00 feet to a railroad spike set.

THENCE, S 32°-57'-27"E, passing into Champaign County, a distance of 960.00 feet to a 5/8 inch iron rod set.

THENCE, N 57°-02'-33"E, a distance of 189.31 feet to a 5/8 inch iron rod set.

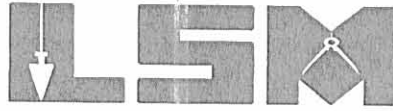
THENCE, S 30°-16'-56"E, a distance of 969.91 feet to a 5/8 inch iron rod set.



Lee Surveying and Mapping Co., Inc.

Land Surveys • Topography • Subdivisions • Construction Layout

117 N. Madriver St.
Bellefontaine OH 43311



Phone: (937) 593-7335
Fax: (937) 593-7444

1975-2005 - 30 YEARS OF EXCELLENCE

THENCE, with the north line of the Virginia K. Reid original 34.000 acre tract (O.R. 104, Pg. 230, Tract Two, Parcel Two), subject to a Land Contract to Amy Todhunter, Vendee, 126.679 acre tract (O.R. 444, Pg. 1398), S 57°-03'-02"W, a distance of 681.98 feet to a point in the center of a creek, passing a 5/8 inch iron rod found at 666.21 feet.

THENCE, with the center of the creek, the following fifteen courses:

N 51°-02'-15"W, a distance of 72.06 feet to a point, referenced by a 5/8 inch iron rod set S 74°-49'-05"W, a distance of 27.00 feet.

N 8°-23'-33"W, a distance of 116.95 feet to a point.

N 38°-31'-35"W, a distance of 106.24 feet to a point.

N 24°-33'-32"W, a distance of 101.67 feet to a point.

N 9°-08'-53"W, a distance of 35.98 feet to a point, referenced by a 5/8 inch iron rod set S 75°-17'-05"W, a distance of 9.70 feet.

N 9°-08'-53"W, a distance of 61.06 feet to a point

N 29°-25'-30"W, a distance of 281.50 feet to a point.

N 17°-24'-32"W, a distance of 30.50 feet to a point, referenced by a 5/8 inch iron rod set S 75°-16'-54"W, a distance of 18.00 feet.

N 17°-24'-32"W, a distance of 251.28 feet to a point, referenced by a 5/8 inch iron rod set S 75°-16'-47"W, a distance of 25.00 feet

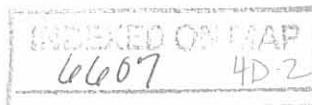
N 17°-24'-32"W, a distance of 40.33 feet to a point

N 4°-38'-05"W, a distance of 126.23 feet to a point.

N 13°-45'-00"W, a distance of 11.51 feet to a point.

N 25°-54'-39"W, a distance of 105.32 feet to a point, referenced by a 5/8 inch iron rod set S 71°-05'-52"W, a distance of 17.00 feet.

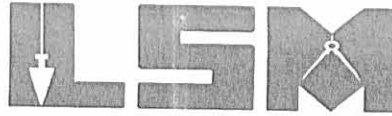
N 25°-54'-39"W, a distance of 160.92 feet to a point



Lee Surveying and Mapping Co., Inc.

Land Surveys • Topography • Subdivisions • Construction Layout

117 N. Madriver St.
Bellefontaine OH 43311



Phone: (937) 593-7335
Fax: (937) 593-7444

1975-2005 - 30 YEARS OF EXCELLENCE

N 13°-10'-57"W, a distance of 86.50 feet to a point.

THENCE, S 80°-42'-17"W, a distance of 50.29 feet to the point of beginning.

Containing 20.324 acres, of which 0.107 acre is within the highway right-of-way. There are 1.463 acres in Zane Township, Logan County and 18.861 acres in Wayne Township, Champaign County.

The basis for bearings is the north line of Virginia Military Survey 5049, being N 57°-02'-33"E, and all other bearings are from angles and distances measured in a field survey by Lee Surveying and Mapping Co., Inc. on February 17, 2006.



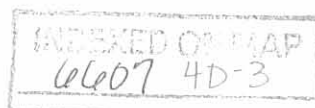
Description prepared by:

A handwritten signature in black ink, appearing to read 'Jeffrey L. Lee', written over the typed name and title.

Jeffrey L. Lee
Professional Surveyor 6359
February 17, 2006

4148026

ORIGINAL STAMP IN GREEN

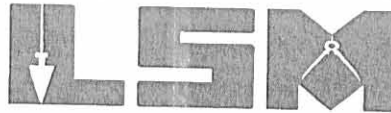


REC'D 3-15-06 SWM/AR

Lee Surveying and Mapping Co., Inc.

Land Surveys • Topography • Subdivisions • Construction Layout

117 N. Madriver St.
Bellefontaine OH 43311



Phone: (937) 593-7335
Fax: (937) 593-7444

1975-2005 - 30 YEARS OF EXCELLENCE

**COUNTRYTME GROVE CITY LTD.
LOT 9-H
5.204 ACRES**

Lying in Virginia Military Survey 5049, Zane Township, Logan County and Wayne Township, Champaign County, Ohio.

Being out of the Countrytyme Grove City Ltd. 109.633 acre tract as deeded and described in Official Record 814, Page 876 of the Logan County Records of Deeds and Official Record 451, Page 11 of the Champaign County Records of Deeds and being more particularly described as follows:

Beginning at a 3/4 inch iron rod found on the center-line of Logan County Highway 15 and Champaign County Township Road 146 (Johnson Road) at the intersection with the south line of Logan County and the north line of Champaign County.

THENCE, with the center-line of Champaign County Township Road 146 (60 feet wide) the following two courses:

S 16°-21'-29"E, a distance of 339.07 feet to a 5/8 inch iron rod set on the north line of Virginia Military Survey 5049.

S 15°-32'-36"E, a distance of 232.00 feet to a 5/8 inch iron rod set.

THENCE, N 64°-36'-20"E, a distance of 628.14 feet to a 3/4 inch iron rod found, passing a 5/8 inch iron rod set at 30.45 feet.

THENCE, with the lines of the Eric M. Svenson 1.719 acre tract (Logan County O.R. 261, Pg. 132, Champaign County O.R. 64, Pg. 116), the following two courses:

N 80°-42'-17"E, a distance of 188.57 feet to a 5/8 inch iron rod set.

N 13°-25'-11"W, a distance of 402.92 feet to a railroad spike set on the north line of Virginia Military Survey 5049 and the center-line of Logan County Highway 44, passing a 5/8 inch iron rod found at 371.09 feet.

THENCE, with the north line of Virginia Military Survey 5049 and the center-line of Logan County Highway 44 (60 feet wide), N 57°-02'-33"E, a distance of 150.00 feet to a railroad spike set at the TRUE POINT OF BEGINNING.

THENCE, with the north line of Virginia Military Survey 5049 and the center-line of Logan County Highway 44 (60 feet wide), N 57°-02'-33"E, a distance of 227.55 feet to a railroad spike set.

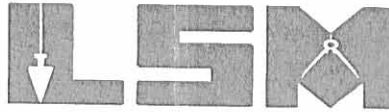
THENCE, S 33°-58'-58"E, passing into Champaign County, a distance of 960.15 feet to a 5/8 inch iron rod set, passing a 5/8 inch iron rod set at 30.00 feet.

INDEXED ON MAP
6607 4D-4

Lee Surveying and Mapping Co., Inc.

Land Surveys • Topography • Subdivisions • Construction Layout

117 N. Madriver St.
Bellefontaine OH 43311



Phone: (937) 593-7335
Fax: (937) 593-7444

1975-2005 - 30 YEARS OF EXCELLENCE

THENCE, S 57°-02'-33"W, a distance of 244.73 feet to a 5/8 inch iron rod set.

THENCE, N 32°-57'-27"W, passing into Logan County, a distance of 960.00 feet to the point of beginning, passing a 5/8 inch iron rod set at 930.00 feet.

Containing 5.204 acres, of which 0.157 acre is within the highway right-of-way. There are 2.692 acres in Zane Township, Logan County and 2.512 acres in Wayne Township, Champaign County.

The basis for bearings is the north line of Virginia Military Survey 5049, being N 57°-02'-33"E, and all other bearings are from angles and distances measured in a field survey by Lee Surveying and Mapping Co., Inc. on February 17, 2006.



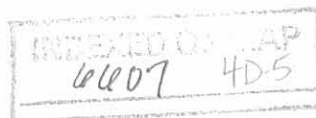
ORIGINAL STAMP IN GREEN

Description prepared by:

A handwritten signature in black ink, appearing to read 'Jeffrey I. Lee'.

Jeffrey I. Lee
Professional Surveyor 6359
February 17, 2006

4148026

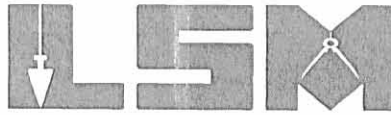


REC'D 3-15-06 SAMPSON

Lee Surveying and Mapping Co., Inc.

Land Surveys • Topography • Subdivisions • Construction Layout

117 N. Madriver St.
Bellefontaine OH 43311



Phone: (937) 593-7335
Fax: (937) 593-7444

1975-2005 - 30 YEARS OF EXCELLENCE

**COUNTRYTME GROVE CITY LTD.
LOT 10-J
5.289 ACRES**

Lying in Virginia Military Survey 5049, Zane Township, Logan County and Wayne Township, Champaign County, Ohio.

Being out of the Countrytyme Grove City Ltd. 109.633 acre tract as deeded and described in Official Record 814, Page 876 of the Logan County Records of Deeds and Official Record 451, Page 11 of the Champaign County Records of Deeds and being more particularly described as follows:

Beginning at a 3/4 inch iron rod found on the center-line of Logan County Highway 15 and Champaign County Township Road 146 (Johnson Road) at the intersection with the south line of Logan County and the north line of Champaign County.

THENCE, with the center-line of Champaign County Township Road 146 (60 feet wide) the following two courses:

S 16°-21'-29"E, a distance of 339.07 feet to a 5/8 inch iron rod set on the north line of Virginia Military Survey 5049.

S 15°-32'-36"E, a distance of 232.00 feet to a 5/8 inch iron rod set.

THENCE, N 64°-36'-20"E, a distance of 628.14 feet to a 3/4 inch iron rod found, passing a 5/8 inch iron rod set at 30.45 feet.

THENCE, with the lines of the Eric M. Svenson 1.719 acre tract (Logan County O.R. 261, Pg. 132, Champaign County O.R. 64, Pg. 116), the following two courses:

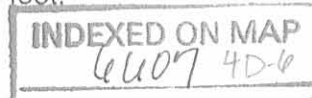
N 80°-42'-17"E, a distance of 188.57 feet to a 5/8 inch iron rod set.

N 13°-25'-11"W, a distance of 402.92 feet to a railroad spike set on the north line of Virginia Military Survey 5049 and the center-line of Logan County Highway 44, passing a 5/8 inch iron rod found at 371.09 feet.

THENCE, with the north line of Virginia Military Survey 5049 and the center-line of Logan County Highway 44 (60 feet wide), N 57°-02'-33"E, a distance of 377.55 feet to a railroad spike set at the TRUE POINT OF BEGINNING.

THENCE, with the north line of Virginia Military Survey 5049 and the center-line of Logan County Highway 44 (60 feet wide), N 57°-02'-33"E, a distance of 240.00 feet to a railroad spike set.

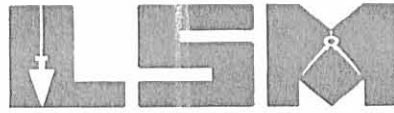
THENCE, S 33°-58'-58"E, passing into Champaign County, a distance of 960.15 feet to a 5/8 inch iron rod set, passing a 5/8 inch iron rod set at 30.00 feet.



Lee Surveying and Mapping Co., Inc.

Land Surveys • Topography • Subdivisions • Construction Layout

117 N. Madriver St.
Bellefontaine OH 43311



Phone: (937) 593-7335
Fax: (937) 593-7444

1975-2005 - 30 YEARS OF EXCELLENCE

THENCE, S 57°-02'-33"W, a distance of 240.00 feet to a 5/8 inch iron rod set.

THENCE, N 33°-58'-58"W, passing into Logan County, a distance of 960.15 feet to the point of beginning, passing a 5/8 inch iron rod set at 930.15 feet.

Containing 5.289 acres, of which 0.165 acre is within the highway right-of-way. There are 3.861 acres in Zane Township, Logan County and 1.428 acres in Wayne Township, Champaign County.

The basis for bearings is the north line of Virginia Military Survey 5049, being N 57°-02'-33"E, and all other bearings are from angles and distances measured in a field survey by Lee Surveying and Mapping Co., Inc. on February 17, 2006.

Description prepared by:

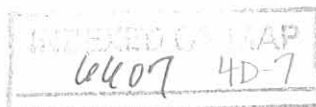


ORIGINAL STAMP IN GREEN

A handwritten signature in black ink, appearing to read 'Jeffrey I. Lee', written over a faint background of the seal.

Jeffrey I. Lee
Professional Surveyor 6359
February 17, 2006

4148026

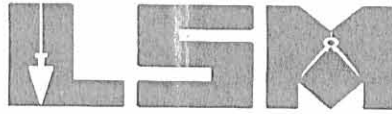


REC'D 3 15 06 SMY OK

Lee Surveying and Mapping Co., Inc.

Land Surveys • Topography • Subdivisions • Construction Layout

117 N. Madriver St.
Bellefontaine OH 43311



Phone: (937) 593-7335
Fax: (937) 593-7444

1975-2005 - 30 YEARS OF EXCELLENCE

**COUNTRYTME GROVE CITY LTD.
LOT 11-K
5.289 ACRES**

Lying in Virginia Military Survey 5049, Zane Township, Logan County and Wayne Township, Champaign County, Ohio.

Being out of the Countrytyme Grove City Ltd. 109.633 acre tract as deeded and described in Official Record 814, Page 876 of the Logan County Records of Deeds and Official Record 451, Page 11 of the Champaign County Records of Deeds and being more particularly described as follows:

Beginning at a 3/4 inch iron rod found on the center-line of Logan County Highway 15 and Champaign County Township Road 146 (Johnson Road) at the intersection with the south line of Logan County and the north line of Champaign County.

THENCE, with the center-line of Champaign County Township Road 146 (60 feet wide) the following two courses:

S 16°-21'-29"E, a distance of 339.07 feet to a 5/8 inch iron rod set on the north line of Virginia Military Survey 5049.

S 15°-32'-36"E, a distance of 232.00 feet to a 5/8 inch iron rod set.

THENCE, N 64°-36'-20"E, a distance of 628.14 feet to a 3/4 inch iron rod found, passing a 5/8 inch iron rod set at 30.45 feet.

THENCE, with the lines of the Eric M. Svenson 1.719 acre tract (Logan County O.R. 261, Pg. 132, Champaign County O.R. 64, Pg. 116), the following two courses:

N 80°-42'-17"E, a distance of 188.57 feet to a 5/8 inch iron rod set.

N 13°-25'-11"W, a distance of 402.92 feet to a railroad spike set on the north line of Virginia Military Survey 5049 and the center-line of Logan County Highway 44, passing a 5/8 inch iron rod found at 371.09 feet.

THENCE, with the north line of Virginia Military Survey 5049 and the center-line of Logan County Highway 44 (60 feet wide), N 57°-02'-33"E, a distance of 617.55 feet to a railroad spike set at the TRUE POINT OF BEGINNING.

THENCE, with the north line of Virginia Military Survey 5049 and the center-line of Logan County Highway 44 (60 feet wide), N 57°-02'-33"E, a distance of 240.00 feet to a railroad spike set.

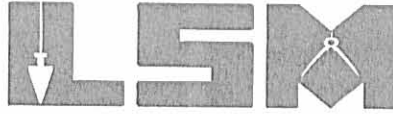
THENCE, S 33°-58'-58"E, a distance of 960.15 feet to a 5/8 inch iron rod set, passing a 5/8 inch iron rod set at 30.00 feet.



Lee Surveying and Mapping Co., Inc.

Land Surveys • Topography • Subdivisions • Construction Layout

117 N. Madriver St.
Bellefontaine OH 43311



Phone: (937) 593-7335
Fax: (937) 593-7444

1975-2005 - 30 YEARS OF EXCELLENCE

THENCE, S 57°-02'-33"W, passing into Champaign County, a distance of 240.00 feet to a 5/8 inch iron rod set.

THENCE, N 33°-58'-58"W, passing into Logan County, a distance of 960.15 feet to the point of beginning, passing a 5/8 inch iron rod set at 930.15 feet.

Containing 5.289 acres, of which 0.165 acre is within the highway right-of-way. There are 4.928 acres in Zane Township, Logan County and 0.361 acre in Wayne Township, Champaign County.

The basis for bearings is the north line of Virginia Military Survey 5049, being N 57°-02'-33"E, and all other bearings are from angles and distances measured in a field survey by Lee Surveying and Mapping Co., Inc. on February 17, 2006.

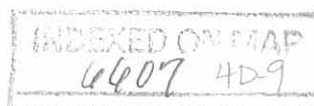


ORIGINAL STAMP IN GREEN

Description prepared by:

A handwritten signature in black ink, appearing to read 'J. Lee', written over the typed name and title.
Jeffrey I. Lee
Professional Surveyor 6359
February 17, 2006

4148026

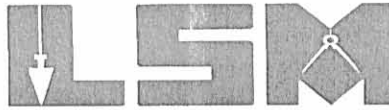


REC'D 3-15-06 SMJ CLK

Lee Surveying and Mapping Co., Inc.

Land Surveys • Topography • Subdivisions • Construction Layout

117 N. Madriver St.
Bellefontaine OH 43311



Phone: (937) 593-7335
Fax: (937) 593-7444

1975-2005 - 30 YEARS OF EXCELLENCE

COUNTRYTME GROVE CITY LTD.

**LOT 12-L
19.248 ACRES**

Lying in Virginia Military Survey 5049, Zane Township, Logan County and Wayne Township, Champaign County, Ohio.

Being out of the Countrytyme Grove City Ltd. 109.633 acre tract as deeded and described in Official Record 814, Page 876 of the Logan County Records of Deeds and Official Record 451, Page 11 of the Champaign County Records of Deeds and being more particularly described as follows:

Beginning at a 3/4 inch iron rod found on the center-line of Logan County Highway 15 and Champaign County Township Road 146 (Johnson Road) at the intersection with the south line of Logan County and the north line of Champaign County.

THENCE, with the center-line of Champaign County Township Road 146 (60 feet wide) the following two courses:

S 16°-21'-29"E, a distance of 339.07 feet to a 5/8 inch iron rod set on the north line of Virginia Military Survey 5049.

S 15°-32'-36"E, a distance of 232.00 feet to a 5/8 inch iron rod set.

THENCE, N 64°-36'-20"E, a distance of 628.14 feet to a 3/4 inch iron rod found, passing a 5/8 inch iron rod set at 30.45 feet.

THENCE, with the lines of the Eric M. Svenson 1.719 acre tract (Logan County O.R. 261, Pg. 132, Champaign County O.R. 64, Pg. 116), the following two courses:

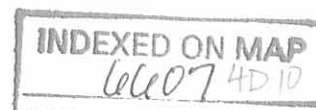
N 80°-42'-17"E, a distance of 188.57 feet to a 5/8 inch iron rod set.

N 13°-25'-11"W, a distance of 402.92 feet to a railroad spike set on the north line of Virginia Military Survey 5049 and the center-line of Logan County Highway 44, passing a 5/8 inch iron rod found at 371.09 feet.

THENCE, with the north line of Virginia Military Survey 5049 and the center-line of Logan County Highway 44 (60 feet wide), N 57°-02'-33"E, a distance of 857.55 feet to a railroad spike set at the TRUE POINT OF BEGINNING.

THENCE, with the north line of Virginia Military Survey 5049 and the center-line of Logan County Highway 44 (60 feet wide), N 57°-02'-33"E, a distance of 150.00 feet to a railroad spike set.

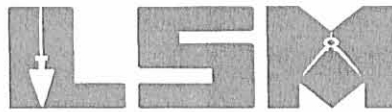
THENCE, S 33°-58'-58"E, passing into Champaign County, a distance of 1929.28 feet to a 5/8 inch iron rod set, passing 5/8 inch iron rods set at 30.00 feet and 960.15 feet.



Lee Surveying and Mapping Co., Inc.

Land Surveys • Topography • Subdivisions • Construction Layout

117 N. Madriver St.
Bellefontaine OH 43311



Phone: (937) 593-7335
Fax: (937) 593-7444

1975-2005 - 30 YEARS OF EXCELLENCE

THENCE, with the north lines of the Frank M. Slemmons 39.43 acre tract (O.R. 110, Pg. 88, Tract X) and the Virginia K. Reid original 34.000 acre tract (O.R. 104, Pg. 230, Tract Two, Parcel Two), subject to a Land Contract to Amy Todhunter, Vendee, 126.679 acre tract (O.R. 444, Pg. 1398), S 57°-03'-02"W, a distance of 748.03 feet to a 5/8 inch iron rod set, passing a 5/8 inch iron rod found at 395.70 feet.

THENCE, N 30°-16'-56"W, a distance of 969.93 feet to a 5/8 inch iron rod set.

THENCE, N 57°-02'-33"E, passing into Logan County, a distance of 535.42 feet to a 5/8 inch iron rod set, passing 5/8 inch iron rods set at 55.42 feet and 295.42 feet.

THENCE, N 33°-58'-58"W, a distance of 960.15 feet to the point of beginning, passing a 5/8 inch iron rod set at 930.15 feet.

Containing 19.248 acres, of which 0.103 acre is within the highway right-of-way. There are 3.662 acres in Zane Township, Logan County and 15.586 acres in Wayne Township, Champaign County.

The basis for bearings is the north line of Virginia Military Survey 5049, being N 57°-02'-33"E, and all other bearings are from angles and distances measured in a field survey by Lee Surveying and Mapping Co., Inc. on February 17, 2006.



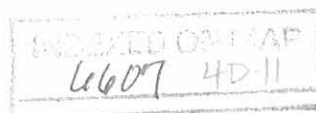
ORIGINAL STAMP IN GREEN

Description prepared by:

A handwritten signature in black ink, appearing to read 'Jeffrey I. Lee'.

Jeffrey I. Lee
Professional Surveyor 6359
February 17, 2006

4148026

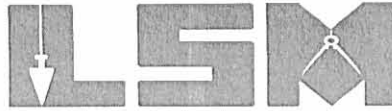


REC'D 3 15-06 SWM/OK

Lee Surveying and Mapping Co., Inc.

Land Surveys • Topography • Subdivisions • Construction Layout

117 N. Madriver St.
Bellefontaine OH 43311



Phone: (937) 593-7335
Fax: (937) 593-7444

1975-2005 - 30 YEARS OF EXCELLENCE

COUNTRYTyme GROVE CITY LTD.

**LOT 13-M
5.289 ACRES**

Lying in Virginia Military Survey 5049, Zane Township, Logan County, Ohio.

Being out of the Countrytyme Grove City Ltd. 109.633 acre tract as deeded and described in Official Record 814, Page 876 of the Logan County Records of Deeds and being more particularly described as follows:

Beginning at a 3/4 inch iron rod found on the center-line of Logan County Highway 15 and Champaign County Township Road 146 (Johnson Road) at the intersection with the south line of Logan County and the north line of Champaign County.

THENCE, with the center-line of Champaign County Township Road 146 (60 feet wide) the following two courses:

S 16°-21'-29"E, a distance of 339.07 feet to a 5/8 inch iron rod set on the north line of Virginia Military Survey 5049.

S 15°-32'-36"E, a distance of 232.00 feet to a 5/8 inch iron rod set.

THENCE, N 64°-36'-20"E, a distance of 628.14 feet to a 3/4 inch iron rod found, passing a 5/8 inch iron rod set at 30.45 feet.

THENCE, with the lines of the Eric M. Svenson 1.719 acre tract (Logan County O.R. 261, Pg. 132, Champaign County O.R. 64, Pg. 116), the following two courses:

N 80°-42'-17"E, a distance of 188.57 feet to a 5/8 inch iron rod set.

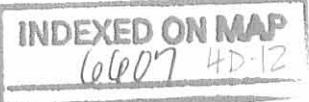
N 13°-25'-11"W, a distance of 402.92 feet to a railroad spike set on the north line of Virginia Military Survey 5049 and the center-line of Logan County Highway 44, passing a 5/8 inch iron rod found at 371.09 feet.

THENCE, with the north line of Virginia Military Survey 5049 and the center-line of Logan County Highway 44 (60 feet wide), N 57°-02'-33"E, a distance of 1007.55 feet to a railroad spike set at the TRUE POINT OF BEGINNING.

THENCE, with the north line of Virginia Military Survey 5049 and the center-line of Logan County Highway 44 (60 feet wide), N 57°-02'-33"E, a distance of 240.00 feet to a railroad spike set.

THENCE, S 33°-58'-58"E, a distance of 960.15 feet to a 5/8 inch iron rod set, passing a 5/8 inch iron rod set at 30.00 feet.

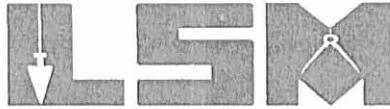
THENCE, S 57°-02'-33"W, a distance of 240.00 feet to a 5/8 inch iron rod set.



Lee Surveying and Mapping Co., Inc.

Land Surveys • Topography • Subdivisions • Construction Layout

117 N. Madriver St.
Bellefontaine OH 43311



Phone: (937) 593-7335
Fax: (937) 593-7444

1975-2005 - 30 YEARS OF EXCELLENCE

THENCE, N 33°-58'-58"W, a distance of 960.15 feet to the point of beginning, passing a 5/8 inch iron rod set at 930.15 feet.

Containing 5.289 acres, of which 0.165 acre is within the highway right-of-way.

The basis for bearings is the north line of Virginia Military Survey 5049, being N 57°-02'-33"E, and all other bearings are from angles and distances measured in a field survey by Lee Surveying and Mapping Co., Inc. on February 17, 2006.

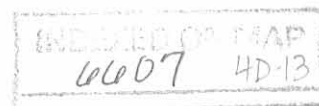


ORIGINAL STAMP IN GREEN

Description prepared by:

Jeffrey I. Lee
Professional Surveyor 6359
February 17, 2006

4148026

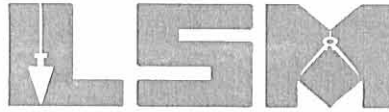


DEC'D 3-14-06 SUM/OK

Lee Surveying and Mapping Co., Inc.

Land Surveys • Topography • Subdivisions • Construction Layout

117 N. Madriver St.
Bellefontaine OH 43311



Phone: (937) 593-7335
Fax: (937) 593-7444

1975-2005 - 30 YEARS OF EXCELLENCE

COUNTRYTyme GROVE CITY LTD.

**LOT 14-N
12.985 ACRES**

Lying in Virginia Military Survey 5049, Zane Township, Logan County and Wayne Township, Champaign County, Ohio.

Being out of the Countrytyme Grove City Ltd. 109.633 acre tract as deeded and described in Official Record 814, Page 876 of the Logan County Records of Deeds and Official Record 451, Page 11 of the Champaign County Records of Deeds and being more particularly described as follows:

Beginning at a 3/4 inch iron rod found on the center-line of Logan County Highway 15 and Champaign County Township Road 146 (Johnson Road) at the intersection with the south line of Logan County and the north line of Champaign County.

THENCE, with the center-line of Champaign County Township Road 146 (60 feet wide) the following two courses:

S 16°-21'-29"E, a distance of 339.07 feet to a 5/8 inch iron rod set on the north line of Virginia Military Survey 5049.

S 15°-32'-36"E, a distance of 232.00 feet to a 5/8 inch iron rod set.

THENCE, N 64°-36'-20"E, a distance of 628.14 feet to a 3/4 inch iron rod found, passing a 5/8 inch iron rod set at 30.45 feet.

THENCE, with the lines of the Eric M. Svenson 1.719 acre tract (Logan County O.R. 261, Pg. 132, Champaign County O.R. 64, Pg. 116), the following two courses:

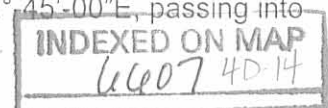
N 80°-42'-17"E, a distance of 188.57 feet to a 5/8 inch iron rod set.

N 13°-25'-11"W, a distance of 402.92 feet to a railroad spike set on the north line of Virginia Military Survey 5049 and the center-line of Logan County Highway 44, passing a 5/8 inch iron rod found at 371.09 feet.

THENCE, with the north line of Virginia Military Survey 5049 and the center-line of Logan County Highway 44 (60 feet wide), N 57°-02'-33"E, a distance of 1247.55 feet to a railroad spike set at the TRUE POINT OF BEGINNING.

THENCE, with the north line of Virginia Military Survey 5049 and the center-line of Logan County Highway 44 (60 feet wide), N 57°-02'-33"E, a distance of 193.42 feet to a 3/4 inch iron rod found.

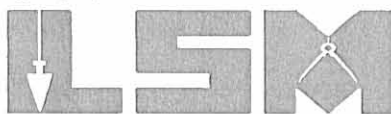
THENCE, with the west line of the Frank M. Slemmons 20.17 acre tract (Logan County O.R. 189, Pg. 444 and Champaign County O.R. 110, Pg. 88, Tract V, Parcel Four), S 32° 45'-00"E, passing into



Lee Surveying and Mapping Co., Inc.

Land Surveys • Topography • Subdivisions • Construction Layout

117 N. Madriver St.
Bellefontaine OH 43311



Phone: (937) 593-7335
Fax: (937) 593-7444

1975-2005 - 30 YEARS OF EXCELLENCE

Champaign County, a distance of 1929.04 feet to a 5/8 inch iron rod found, passing a 5/8 inch iron rod found at 30.00 feet.

THENCE, with the north line of the Frank M. Slemmons 39.43 acre tract (O.R. 110, Pg. 88, Tract X), S 57°-03'-02"W, a distance of 391.91 feet to a 5/8 inch iron rod set.

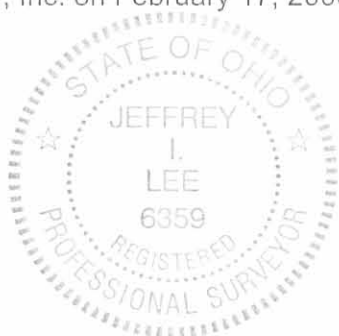
THENCE, N 33°-58'-58"W, passing into Logan County, a distance of 969.13 feet to a 5/8 inch iron rod set.

THENCE, N 57°-02'-33"E, a distance of 240.00 feet to a 5/8 inch iron rod set.

THENCE, N 33°-58'-58"W, a distance of 960.15 feet to the point of beginning, passing a 5/8 inch iron rod set at 930.15 feet.


Containing 12.985 acres, of which 0.133 acre is within the highway right-of-way. There are 7.094 acres in Zane Township, Logan County and 5.891 acres in Wayne Township, Champaign County.

The basis for bearings is the north line of Virginia Military Survey 5049, being N 57°-02'-33"E, and all other bearings are from angles and distances measured in a field survey by Lee Surveying and Mapping Co., Inc. on February 17, 2006.

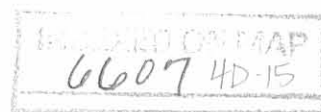


ORIGINAL STAMP IN GREEN

Description prepared by:


Jeffrey I. Lee
Professional Surveyor 6359
February 17, 2006

4148026

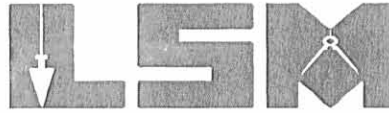


REV'D 3-15-06 SMY OK

Lee Surveying and Mapping Co., Inc.

Land Surveys • Topography • Subdivisions • Construction Layout

117 N. Madriver St.
Bellefontaine OH 43311



Phone: (937) 593-7335
Fax: (937) 593-7444

1975-2005 - 30 YEARS OF EXCELLENCE

COUNTRYTYME GROVE CITY LTD. DRIVEWAY EASEMENT #1

Lying in Virginia Military Survey 5049, Zane Township, Logan County, Ohio.

Being a driveway easement over the Countrytyme Grove City Ltd. 109.633 acre tract as deeded and described in Official Record 814, Page 876 of the Logan County Records of Deeds and being more particularly described as follows:

Beginning at a 3/4 inch iron rod found on the center-line of Logan County Highway 15 and Champaign County Township Road 146 (Johnson Road) at the intersection with the south line of Logan County and the north line of Champaign County.

THENCE, with the center-line of Champaign County Township Road 146 (60 feet wide) the following two courses:

S 16°-21'-29"E, a distance of 339.07 feet to a 5/8 inch iron rod set on the north line of Virginia Military Survey 5049.

S 15°-32'-36"E, a distance of 232.00 feet to a 5/8 inch iron rod set.

THENCE, N 64°-36'-20"E, a distance of 628.14 feet to a 3/4 inch iron rod found, passing a 5/8 inch iron rod set at 30.45 feet.

THENCE, with the lines of the Eric M. Svenson 1.719 acre tract (Logan County O.R. 261, Pg. 132, Champaign County O.R. 64, Pg. 116), the following two courses:

N 80°-42'-17"E, a distance of 188.57 feet to a 5/8 inch iron rod set.

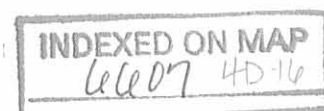
N 13°-25'-11"W, a distance of 402.92 feet to a railroad spike set on the north line of Virginia Military Survey 5049 and the center-line of Logan County Highway 44, passing a 5/8 inch iron rod found at 371.09 feet.

THENCE, with the north line of Virginia Military Survey 5049 and the center-line of Logan County Highway 44 (60 feet wide), N 57°-02'-33"E, a distance of 150.00 feet to a railroad spike set at the TRUE POINT OF BEGINNING.

THENCE, with the north line of Virginia Military Survey 5049 and the center-line of Logan County Highway 44, N 57°-02'-33"E, a distance of 227.55 feet to a railroad spike set.

THENCE, S 33°-58'-58"E, a distance of 120.02 feet to a point, passing a 5/8 inch iron rod set at 30.00 feet.

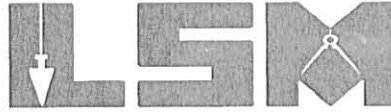
THENCE, S 57°-02'-33"W, a distance of 118.98 feet to a point.



Lee Surveying and Mapping Co., Inc.

Land Surveys • Topography • Subdivisions • Construction Layout

117 N. Madriver St.
Bellefontaine OH 43311



Phone: (937) 593-7335
Fax: (937) 593-7444

1975-2005 - 30 YEARS OF EXCELLENCE

THENCE, S 11°-24'-33"W, a distance of 158.33 feet to a point.

THENCE, N 32°-57'-27"W, a distance of 233.19 feet to the point of beginning, passing a 5/8 inch iron rod set at 203.19 feet.

The basis for bearings is the north line of Virginia Military Survey 5049, being N 57°-02'-33"E, and all other bearings are from angles and distances measured in a field survey by Lee Surveying and Mapping Co., Inc. on February 17, 2006.



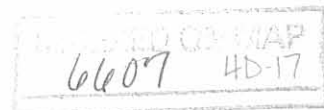
Description prepared by:

A handwritten signature in black ink, appearing to read 'Jeffrey I. Lee', written over the typed name and date.

Jeffrey I. Lee
Professional Surveyor 6359
March 10, 2006

4148036

ORIGINAL STAMP IN GREEN

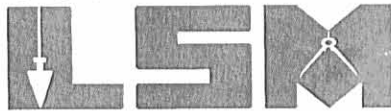


REC'D 3 15 06 8M/OL

Lee Surveying and Mapping Co., Inc.

Land Surveys • Topography • Subdivisions • Construction Layout

117 N. Madriver St.
Bellefontaine OH 43311



Phone: (937) 593-7335
Fax: (937) 593-7444

1975-2005 - 30 YEARS OF EXCELLENCE

COUNTRYTYME GROVE CITY LTD. DRIVEWAY EASEMENT #2

Lying in Virginia Military Survey 5049, Zane Township, Logan County, Ohio.

Being a driveway easement over the Countrytyme Grove City Ltd. 109.633 acre tract as deeded and described in Official Record 814, Page 876 of the Logan County Records of Deeds and being more particularly described as follows:

Beginning at a 3/4 inch iron rod found on the center-line of Logan County Highway 15 and Champaign County Township Road 146 (Johnson Road) at the intersection with the south line of Logan County and the north line of Champaign County.

THENCE, with the center-line of Champaign County Township Road 146 (60 feet wide) the following two courses:

S 16°-21'-29"E, a distance of 339.07 feet to a 5/8 inch iron rod set on the north line of Virginia Military Survey 5049.

S 15°-32'-36"E, a distance of 232.00 feet to a 5/8 inch iron rod set.

THENCE, N 64°-36'-20"E, a distance of 628.14 feet to a 3/4 inch iron rod found, passing a 5/8 inch iron rod set at 30.45 feet.

THENCE, with the lines of the Eric M. Svenson 1.719 acre tract (Logan County O.R. 261, Pg. 132, Champaign County O.R. 64, Pg. 116), the following two courses:

N 80°-42'-17"E, a distance of 188.57 feet to a 5/8 inch iron rod set.

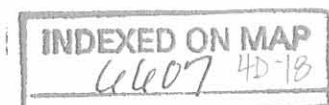
N 13°-25'-11"W, a distance of 402.92 feet to a railroad spike set on the north line of Virginia Military Survey 5049 and the center-line of Logan County Highway 44, passing a 5/8 inch iron rod found at 371.09 feet.

THENCE, with the north line of Virginia Military Survey 5049 and the center-line of Logan County Highway 44 (60 feet wide), N 57°-02'-33"E, a distance of 377.55 feet to a railroad spike set at the TRUE POINT OF BEGINNING.

THENCE, with the north line of Virginia Military Survey 5049 and the center-line of Logan County Highway 44, N 57°-02'-33"E, a distance of 100.02 feet to a point.

THENCE, S 33°-58'-58"E, a distance of 120.02 feet to a point.

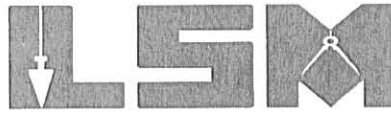
THENCE, S 57°-02'-33"W, a distance of 100.02 feet to a point.



Lee Surveying and Mapping Co., Inc.

Land Surveys • Topography • Subdivisions • Construction Layout

117 N. Madriver St.
Bellefontaine OH 43311



Phone: (937) 593-7335
Fax: (937) 593-7444

1975-2005 - 30 YEARS OF EXCELLENCE

THENCE, N 33°-58'-58"W, a distance of 120.02 feet to the point of beginning, passing a 5/8 inch iron rod set at 90.02 feet.

The basis for bearings is the north line of Virginia Military Survey 5049, being N 57°-02'-33"E, and all other bearings are from angles and distances measured in a field survey by Lee Surveying and Mapping Co., Inc. on February 17, 2006.



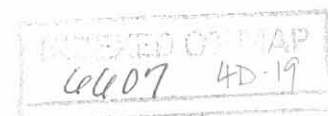
ORIGINAL STAMP IN GREEN

Description prepared by:

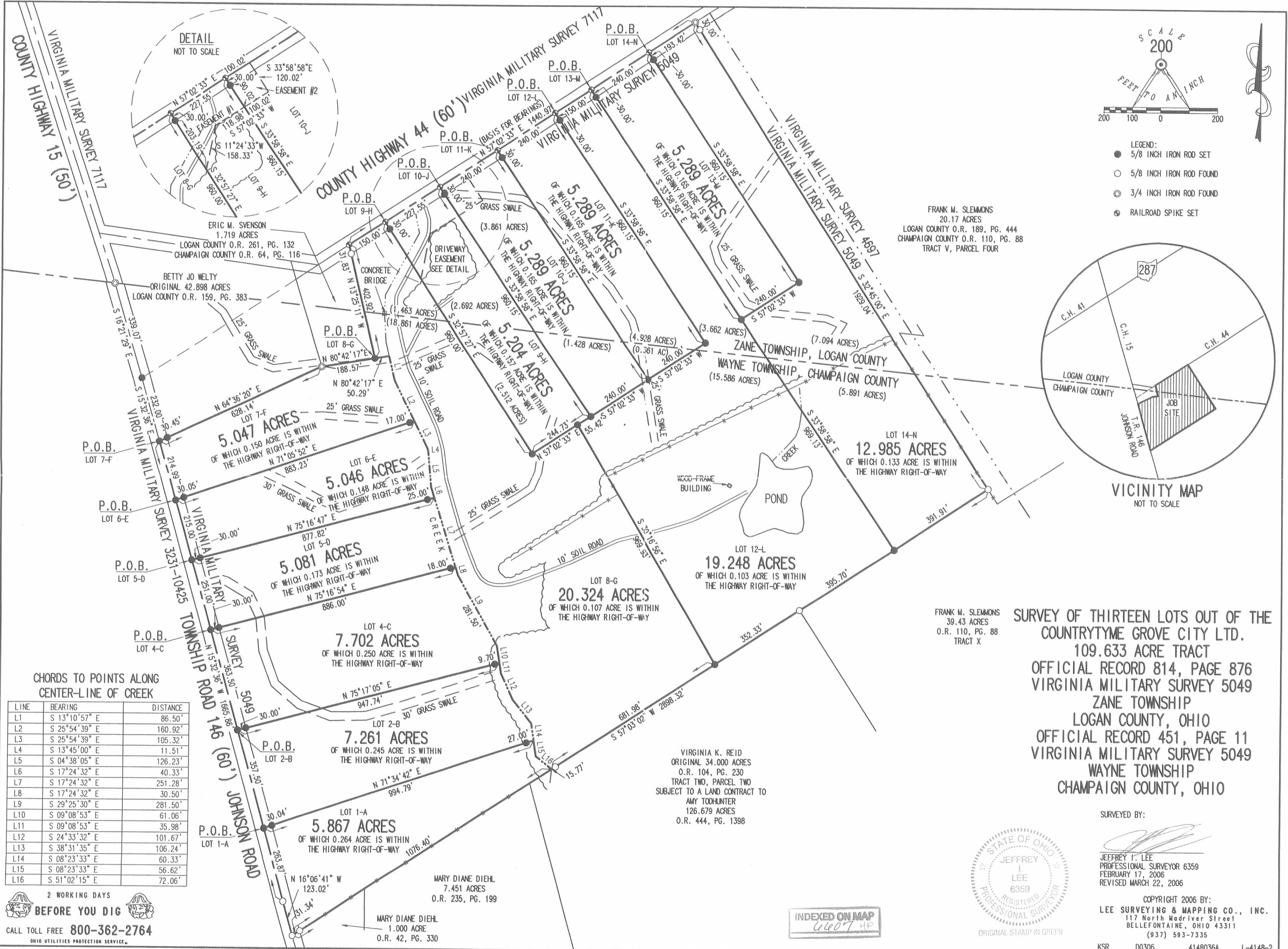
A handwritten signature in black ink, appearing to read 'J. Lee', written over the typed name and date.

Jeffrey I. Lee
Professional Surveyor 6359
March 10, 2006

4148036



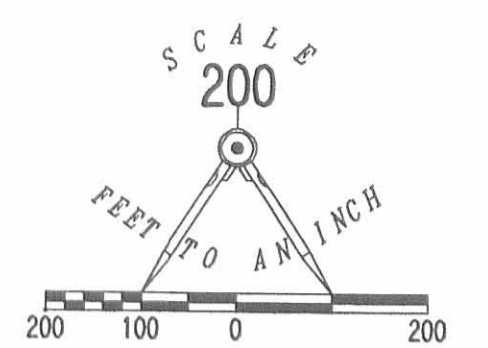
ROAD 3-28-06 8MM DK



CHORDS TO POINTS ALONG CENTER-LINE OF CREEK

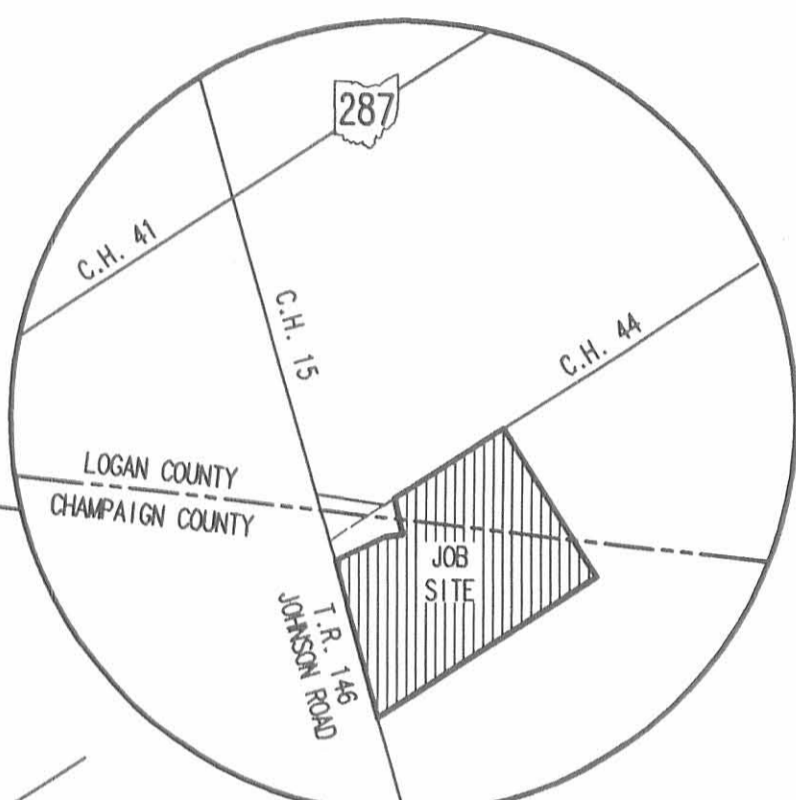
LINE	BEARING	DISTANCE
L1	S 13°10'57" E	86.50'
L2	S 25°54'39" E	160.92'
L3	S 25°54'39" E	105.32'
L4	S 13°45'00" E	11.51'
L5	S 04°38'05" E	126.23'
L6	S 17°24'32" E	40.33'
L7	S 17°24'32" E	251.28'
L8	S 17°24'32" E	30.50'
L9	S 29°25'30" E	281.50'
L10	S 09°08'53" E	61.06'
L11	S 09°08'53" E	35.98'
L12	S 24°33'32" E	101.67'
L13	S 38°31'35" E	106.24'
L14	S 08°23'33" E	60.33'
L15	S 08°23'33" E	56.62'
L16	S 51°02'15" E	72.06'

2 WORKING DAYS
BEFORE YOU DIG
 CALL TOLL FREE 800-362-2764
 OHIO UTILITIES PROTECTION SERVICE



- LEGEND:
- 5/8 INCH IRON ROD SET
 - 5/8 INCH IRON ROD FOUND
 - ⊙ 3/4 INCH IRON ROD FOUND
 - ⊕ RAILROAD SPIKE SET

FRANK M. SLEMMONS
 20.17 ACRES
 LOGAN COUNTY O.R. 189, PG. 444
 CHAMPAIGN COUNTY O.R. 110, PG. 88
 TRACT V, PARCEL FOUR



VICINITY MAP
 NOT TO SCALE

FRANK M. SLEMMONS
 39.43 ACRES
 O.R. 110, PG. 88
 TRACT X

**SURVEY OF THIRTEEN LOTS OUT OF THE
 COUNTRYTME GROVE CITY LTD.
 109.633 ACRE TRACT
 OFFICIAL RECORD 814, PAGE 876
 VIRGINIA MILITARY SURVEY 5049
 ZANE TOWNSHIP
 LOGAN COUNTY, OHIO
 OFFICIAL RECORD 451, PAGE 11
 VIRGINIA MILITARY SURVEY 5049
 WAYNE TOWNSHIP
 CHAMPAIGN COUNTY, OHIO**

VIRGINIA K. REID
 ORIGINAL 34.000 ACRES
 O.R. 104, PG. 230
 TRACT TWO, PARCEL TWO
 SUBJECT TO A LAND CONTRACT TO
 AMY TODHUNTER
 126.679 ACRES
 O.R. 444, PG. 1398

MARY DIANE DIEHL
 7.451 ACRES
 O.R. 235, PG. 199

MARY DIANE DIEHL
 1.000 ACRE
 O.R. 42, PG. 330



SURVEYED BY:

 JEFFREY T. LEE
 PROFESSIONAL SURVEYOR 6359
 FEBRUARY 17, 2006
 REVISED MARCH 22, 2006

COPYRIGHT 2006 BY:
LEE SURVEYING & MAPPING CO., INC.
 117 North Madriver Street
 BELLEFONTAINE, OHIO 43311
 (937) 593-7335

INDEXED ON MAP
 6607 4P

REC'D 8-24-11 SWY OK

JOHN AND BETTY JO WELTY SURVEY
8.000 ACRES
August 23, 2011

The following described 8.000 acre tract of land is situated in Virginia Military Surveys 5049 and 7117, Zane Township, Logan County and Wayne Township, Champaign County, Ohio and being part of Betty Jo Welty's original 42.898 acre tract described in Logan County Official Record Volume 159, page 383 and part of Betty Jo and John Welty's original 113.526 acre tract described in Logan County Official Record Volume 589, page 883 and in Champaign County Official Record Volume 401, page 2570, said 8.000 acre tract more particularly described as follows:

Beginning at a one inch iron bar found at the intersection of the centerline of Logan County Road 44 (60 feet wide) with the centerline of Logan County Road 15 (50 feet wide), said iron bar being located at the northwest corner of the remainder of said original 42.898 acre tract and in the west line of V.M.S. 7117;

Thence **South 83°26'52" East 671.40 feet**, following the centerline of Logan County Road 44 and the north line of the remainder of said original 42.898 acre tract, entering V.M.S. 7117, to a 3/4 inch iron bolt found at the northwest corner of Eric M. and Barbara H. Svenson's 1.719 acre tract described in Logan County Official Record Volume 261, page 132 and in Champaign County Official Record Volume 164, page 116;

Thence **South 17°01'10" East 387.10 feet**, departing from the centerline of Logan County Road 44, following the west line of said 1.719 acre tract and the east line of the remainder of said original 42.898 acre tract, passing a 5/8 inch iron bar found at 32.73 feet and a 5/8 inch iron bar found at 70.79 feet at the southeast corner of the remainder of said original 42.898 acre tract and at the northeast corner of the remainder of said original 113.526 acre tract, said iron bar also in the south line of V.M.S. 7117 and in the north line of V.M.S. 5049, following the east line of the remainder of said original 113.526 acre tract thereafter, entering V.M.S. 5049, leaving Zane Township, Logan County and entering Wayne Township, Champaign County, and passing another 5/8 inch iron bar found at 356.04 feet, to a 3/4 inch iron bar found at an angle point in the north line of Travis John Kimble's 5.047 acre tract described in Champaign County Official Record Volume 472, page 1224;

Thence **South 64°36'25" West 628.08 feet**, following the north line of said 5.047 acre tract and the south line of the remainder of said original 113.526 acre tract, passing a 5/8 inch iron bar found at 597.65 feet, to a 5/8 inch iron bar found in the centerline of Johnson Road (Wayne Township Road 146, 60 feet wide) and in the west line of V.M.S. 5049;

Thence **North 15°33'56" West 232.00 feet**, following the centerline of Johnson Road (Wayne Township Road 146), the west line of V.M.S. 5049, and the west line of the remainder of said original 113.526 acre tract, to a 5/8 inch iron bar found at the



southwest corner of V.M.S. 7117 and at the southwest corner of the remainder of said original 42.898 acre tract;

Thence **North 16°22'49" West 339.07 feet**, following the centerline of Johnson Road (Wayne Township Road 146), the west line of V.M.S. 7117, and the west line of the remainder of said original 42.898 acre tract, to a ¼ inch iron bar found in the south line of Zane Township, Logan County and in the north line of Wayne Township, Champaign County, said iron bar also at the southernmost point of termination of the centerline of Logan County Road 15;

Thence **North 18°12'38" West 176.12 feet**, following the centerline of Logan County Road 15, the west line of V.M.S. 7117, and the west line of the remainder of said original 42.898 acre tract, entering Zane Township, Logan County, to the **place of beginning, containing 8.000 acres**, more or less, and subject to all valid easements and restrictions of record.

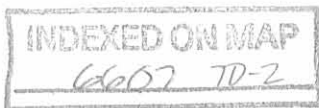
Of the above-described 8.000 acre tract of land, 4.117 acres are all of the remainder of said original 42.898 acre tract (2.215 acres being within Zane Township, Logan County and 1.902 acres being within Wayne Township, Champaign County) and 3.883 acres are all of the remainder of said original 113.526 acre tract (0.125 acre being within Zane Township, Logan County and 3.758 acres being within Wayne Township, Champaign County). The total acreage within Zane Township, Logan County being 2.340 acres and the total acreage within Wayne Township, Champaign County being 5.660 acres.

The above-described 8.000 acre tract of land contains 0.932 acre within the road right-of-way (0.544 acre is within Logan County Road 15 and Logan County Road 44 and 0.388 acre is within Johnson Road (Wayne Township Road 146)).

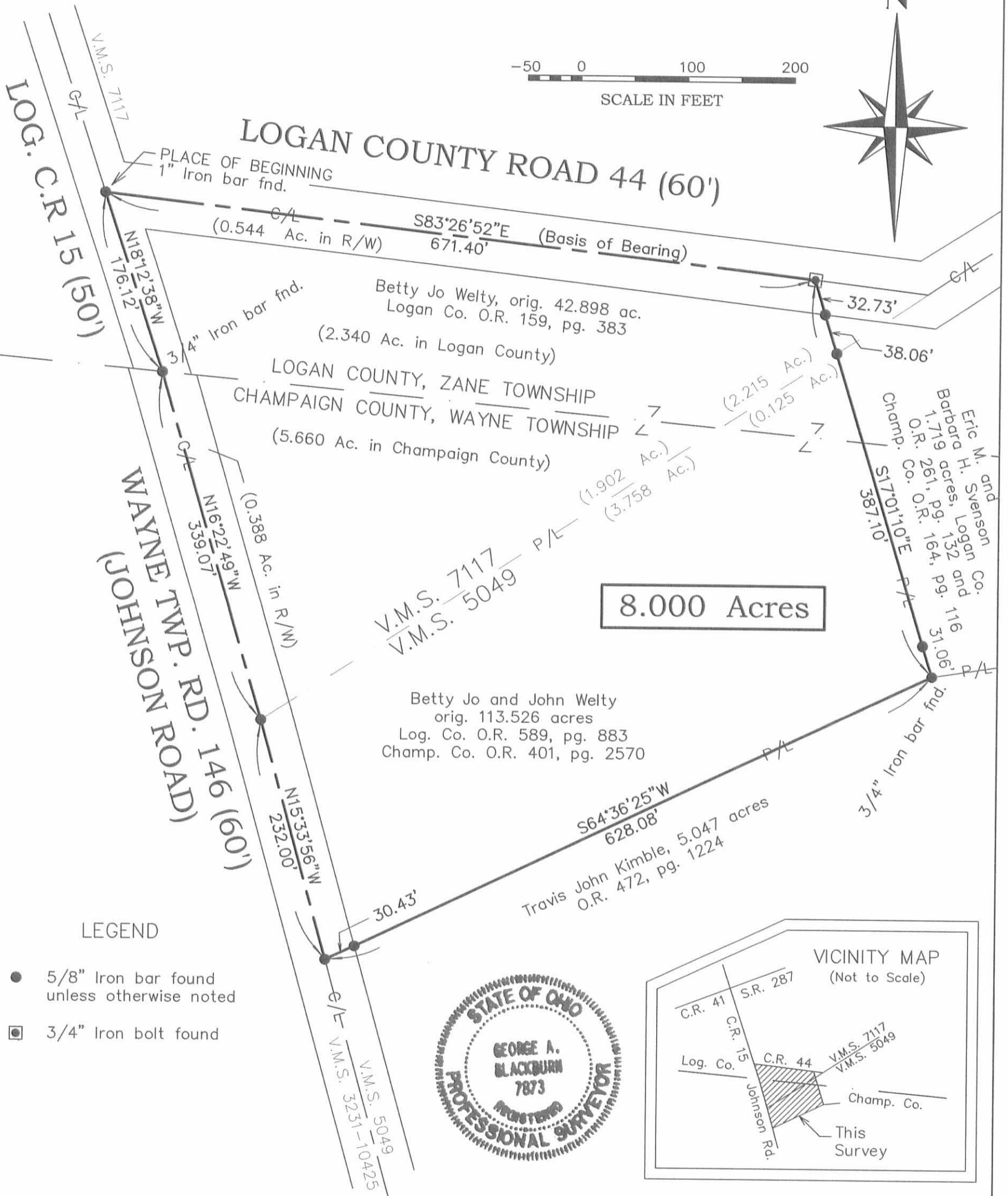
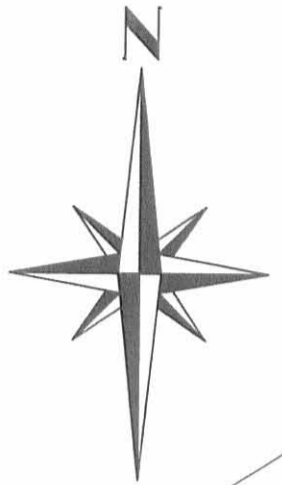
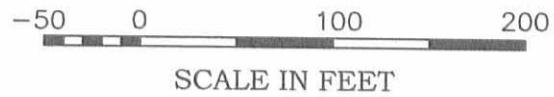
The above description was prepared from an actual field survey made by George A. Blackburn, Registered Surveyor #7873, during the month of August 2011. Iron bars set are 5/8 inch by 30 inch reinforcing rods with plastic caps marked "Blackburn RS #7873." Bearings indicated herein are based on the centerline of Logan County Road 44 (60 feet wide) bearing South 83°26'52" East.

Description prepared by:

George A. Blackburn 8-23-2011
George A. Blackburn, R.S. #7873
12125 Green Street
Middleburg, Ohio 43336
(937) 666-5605



PLAT OF SURVEY IN VIRGINIA MILITARY SURVEYS 5049 AND 7117 ZANE TOWNSHIP, LOGAN COUNTY AND WAYNE TOWNSHIP, CHAMPAIGN COUNTY, OHIO



I hereby certify that this plat was prepared from an actual field survey and that monuments were placed as indicated hereon.

George A. Blackburn 8-23-2011
George A. Blackburn, R.S. 7873

BLACKBURN SURVEYING
12125 GREEN STREET, MIDDLEBURG, OHIO 43336
(937) 666-5605 & (937) 597-2700

DATE: 8/23/2011
SCALE: 1" = 100'
F.B. 8, PG. 23
File: Welty 8-11

PLAT PREPARED FOR
JOHN AND BETTY WELTY

Sheet
1
of
1

INDEXED ON MAP
6607 7P

FRANK M. SLEMMONS SURVEY
35.031 ACRES
January 27, 2012

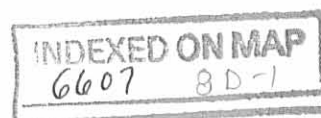
The following described 35.031 acre tract of land is situated in Virginia Military Survey 5049, Zane Township, Logan County and Wayne Township, Champaign County, Ohio and being all of Frank M. Slemmons, Trustee's 5.204 acre tract described in Logan County Official Record Volume 1049, page 714 and in Champaign County Official Record Volume 501, page 2984 and all of Exhibit A (Lot 10-J, 5.289 acres), Exhibit B (Lot 11-K, 5.289 acres), and Exhibit C (Lot 12-L, 19.248 acres) all being described in Logan County Official Record Volume 1047, page 156 and in Champaign County Official Record Volume 501, page 909, said 35.031 acre tract more particularly described as follows:

Beginning for reference at a $\frac{3}{4}$ inch iron bar found at an angle point in the centerline of Logan County Road 44 (60 feet wide), said iron bar being in the northwest line of V.M.S. 5049 and in the southeast line of V.M.S. 7117, said iron bar also at a point where the centerline of said road departs from the northwest line of V.M.S. 5049 in a westerly direction toward Logan County Road 15 (60 feet wide), said iron bar also at an angle point in the northwest line of Eric M. Svenson's and Barbara H. Svenson's 1.719 acre tract described in Logan County Official Record Volume 261, page 132 and in Champaign County Official Record Volume 164, page 116;

Thence North $57^{\circ}02'33''$ East 268.60 feet, following the centerline of Logan County Road 44, the northwest line of V.M.S. 5049, the southeast line of V.M.S. 7117, the northwest line of said 1.719 acre tract, and the northwest line of a 20.324 acre tract conveyed to Dwight A. King and Sharon L. King in Logan County Official Record Volume 823, page 855 and to Dwight King in Champaign County Official Record Volume 501, page 1828, to a railroad spike found at the westernmost corner of said 5.204 acre tract, said railroad spike marking the **place of beginning**;

Thence North $57^{\circ}02'33''$ East **857.55 feet**, following the centerline of Logan County Road 44, the northwest line of V.M.S. 5049, the southeast line of V.M.S. 7117, the northwest line of said 5.204 acre tract, the northwest line of said 5.289 acre tract (Exhibit A, Lot 10-J), the northwest line of said 5.289 acre tract (Exhibit B, Lot 11-K), and the northwest line of said 19.248 acre tract (Exhibit C, Lot 12-L), to a railroad spike found at the westernmost corner of Randy D. Longshore's and Melody S. Longshore's 5.289 acre, Tract I, described in Logan County Official Record Volume 982, page 396 and in Champaign County Official Record Volume 486, page 1832;

Thence South $33^{\circ}58'58''$ East **1929.28 feet**, departing from the centerline of Logan County Road 44 and the southeast line of V.M.S. 7117, entering V.M.S. 5049, following the northeast line of said 19.248 acre tract (Exhibit C, Lot 12-L), the southwest line of said Longshore's 5.289 acre tract, and the southwest line of Randy D. Longshore's and Melody S. Longshore's 12.985 acre, Tract II, described in Logan County Official



Record Volume 982, page 396 and in Champaign County Official Record Volume 486, page 1832, leaving Zane Township, Logan County and entering Wayne Township, Champaign County, passing a 5/8 inch iron bar found at 30.00 feet, to a 5/8 inch iron bar found in the northwest line of Frank M. Slemmons' 39.43 acre, Tract X, described in Champaign County Official Record Volume 110, page 88;

Thence **South 57°03'02" West 748.03 feet**, following the southeast line of said 19.248 acre tract (Exhibit C, Lot 12-L), the northwest line of said 39.43 acre tract, and the northwest line of James P. Todhunter's and Amy D. Todhunter's 126.679 acre tract described in Champaign County Official Record Volume 470, page 3010, to a 5/8 inch iron bar found at the easternmost corner of said 20.324 acre tract;

Thence **North 30°16'57" West 969.93 feet**, departing from the northwest line of said 126.679 acre tract, following the southwest line of said 19.248 acre tract (Exhibit C, Lot 12-L) and a northeast line of said 20.324 acre tract, to a 5/8 inch iron bar found in the southeast line of said 5.204 acre tract;

Thence **South 57°02'33" West 189.31 feet**, following the southeast line of said 5.204 acre tract and a northwest line of said 20.324 acre tract, to a 5/8 inch iron bar found;

Thence **North 32°57'27" West 960.00 feet**, following the southwest line of said 5.204 acre tract and a northeast line of said 20.324 acre tract, leaving Wayne Township, Champaign County and re-entering Zane Township, Logan County, passing a 5/8 inch iron bar found at 930.00 feet, to the **place of beginning, containing 35.031 acres**, more or less, and subject to all valid easements and restrictions of record.

Of the above-described 35.031 acre tract of land, 15.144 acres are within Zane Township, Logan County and 19.887 acres are within Wayne Township, Champaign County.

The road right-of-way of Logan County Road 44 contains 0.591 acre.

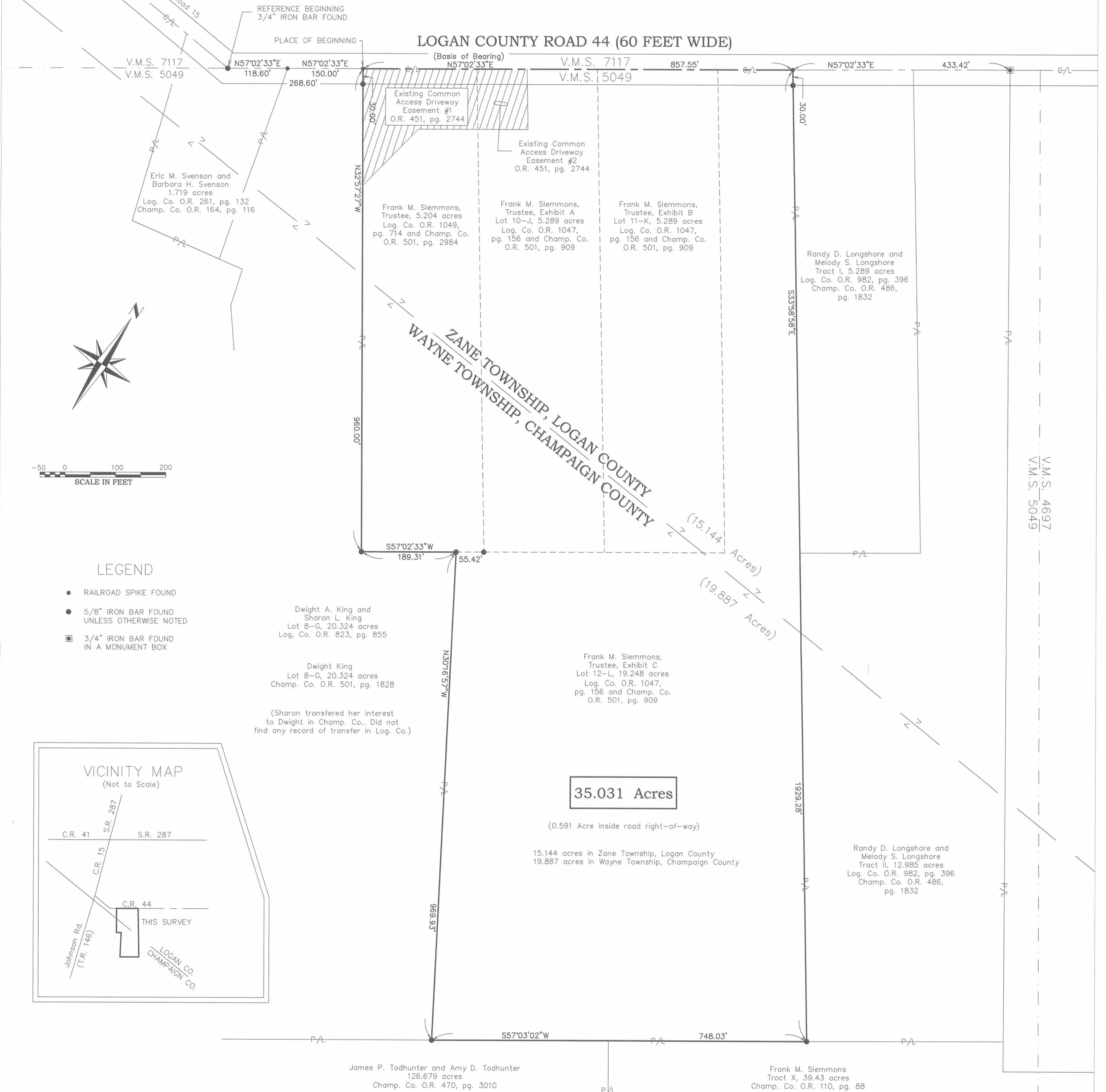
The above description was prepared from an actual field survey made by George A. Blackburn, Registered Surveyor #7873, during the month of January 2012. Iron bars set are 5/8 inch by 30 inch reinforcing rods with plastic caps marked "Blackburn RS #7873." Bearings indicated herein are based on the centerline of Logan County Road 44 and the northwest line of V.M.S. 5049 bearing North 57°02'33" East.

Description prepared by: George A. Blackburn 1-27-2012
George A. Blackburn, R.S. #7873
12125 Green Street
Middleburg, Ohio 43336
(937) 666-5605

INDEXED ON MAP
6607 8D-2

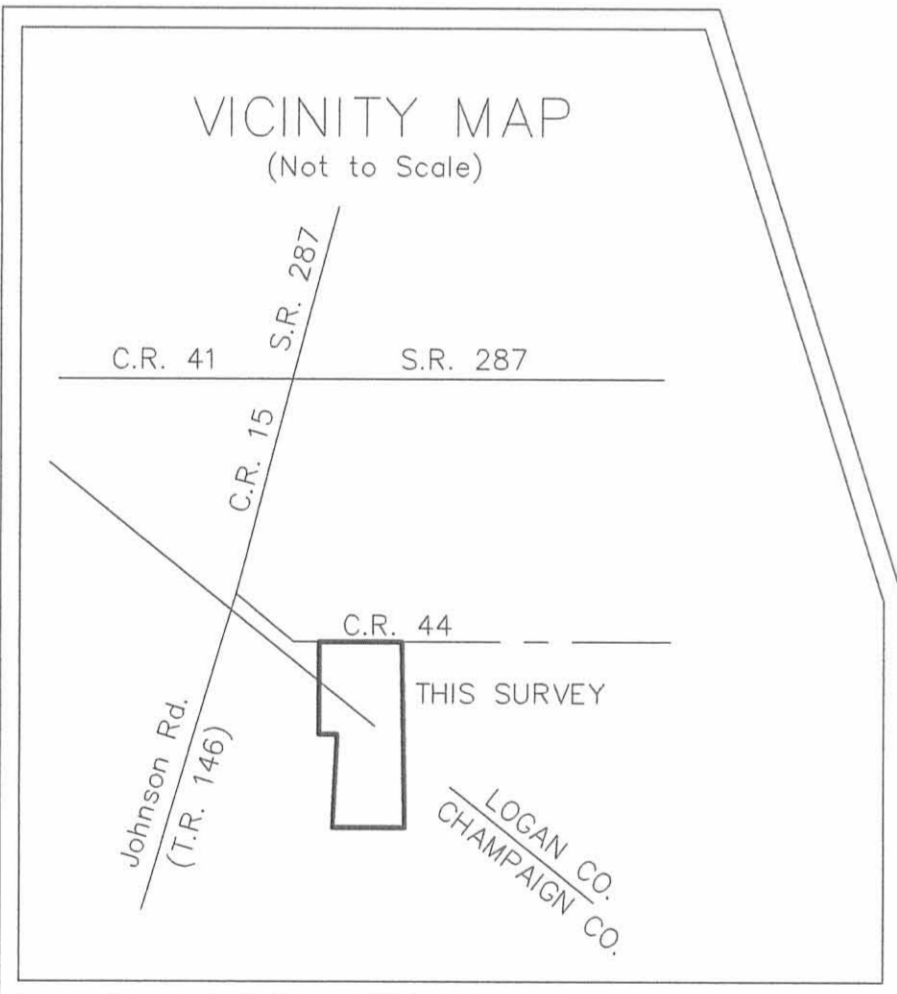


PLAT OF SURVEY IN
 VIRGINIA MILITARY SURVEY 5049
 ZANE TOWNSHIP, LOGAN COUNTY AND
 WAYNE TOWNSHIP, CHAMPAIGN COUNTY, OHIO



LEGEND

- RAILROAD SPIKE FOUND
- 5/8" IRON BAR FOUND UNLESS OTHERWISE NOTED
- 3/4" IRON BAR FOUND IN A MONUMENT BOX



35.031 Acres

(0.591 Acre inside road right-of-way)
 15.144 acres in Zane Township, Logan County
 19.887 acres in Wayne Township, Champaign County

CERTIFICATION:

I hereby certify that this plat was prepared from an actual field survey and that monuments were placed as indicated hereon.
George A. Blackburn 1-26-2012
 George A. Blackburn, R.S. 7873



BLACKBURN SURVEYING
 12125 GREEN STREET
 MIDDLEBURG, OHIO 43336
 (937) 666-5605

DATE : 1/26/2012
 SCALE : 1" = 100'
 File: Slemmons 1-12

INDEXED ON MAP
 6607 8P

**PLAT PREPARED FOR
 FRANK M. SLEMMONS**

SHEET
 1
 OF 1

10-17-2022
APPROVED

**DESCRIPTION OF SURVEY FOR
BETTY JO WELTY
2.000 ACRES
October 2, 2022**

The following described 2.000 acre tract of land is situated in Virginia Military Surveys 5049 and 7117, Zane Township, Logan County and Wayne Township, Champaign County, Ohio and being part of John Welty's and Betty Jo Welty's 8.000 acre tract described in Logan County Official Record Volume 1042, page 538 and in Champaign County Official Record Volume 500, page 388, said 2.000 acre tract more particularly described as follows:

Beginning for reference at a one inch iron bar found at the intersection of the centerline of Logan County Road 44 (60 feet wide) with the centerline of Logan County Road 15 (50 feet wide), said iron bar also in the west line of V.M.S. 7117, the east line of V.M.S. 3231-10425 and at the northwest corner of said 8.000 acre tract;

Thence **South 82°35'29" East 457.42 feet**, following the centerline of Logan County Road 44 and the north line of said 8.000 acre tract, entering V.M.S. 7117, to a magnetic nail set and marking the **place of beginning**;

Thence **South 82°35'29" East 213.95 feet**, following the centerline of Logan County Road 44 and the north line of said 8.000 acre tract, to a ¼ inch iron bolt found at the northwest corner of Eric M. Svenson's and Barbara H. Svenson's 1.719 acre tract described in Logan County Official Record Volume 261, page 132 and in Champaign County Official Record Volume 164, page 116;

Thence **South 16°09'30" East 386.98 feet**, departing from the centerline of Logan County Road 44, following the west line of said 1.719 acre tract and the east line of said 8.000 acre tract, leaving Zane Township, Logan County and entering Wayne Township, Champaign County, also leaving V.M.S. 7117 and entering V.M.S. 5049, passing 5/8 inch iron bars found at 32.60 feet, 70.72 feet and at 355.92 feet, to a 3/4 inch iron bar found in the north line of Jennifer L. Eaton's 5.047 acre tract described in Champaign County Official Record Volume 543, page 3373;

Thence **South 65°27'41" West 198.22 feet**, following the north line of said 5.047 acre tract and the south line of said 8.000 acre tract, to an iron bar set;

Thence **North 16°09'30" West 501.42 feet**, departing from the north line of said 5.047 acre tract and crossing said 8.000 acre tract, leaving V.M.S. 5049 and entering V.M.S. 7117, also leaving Wayne Township, Champaign County and re-entering Zane Township, Logan County,

INDEXED ON MAP

6607

passing an iron bar set at 468.69 feet, to the **place of beginning, containing 2.000 acres** more or less and subject to all valid easements and restrictions of record.

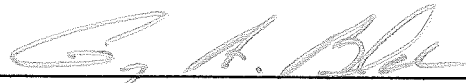
The 2.000 acre tract of land described herein has 0.728 acres within Zane Township, Logan County (0.599 acres are within V.M.S. 7117 and 0.129 acres are within V.M.S. 5049) and 1.272 acres within Wayne Township, Champaign County (1.233 acres are within V.M.S. 5049 and 0.039 acres are within V.M.S. 7117).

The road right-of-way of Logan County Road 44 contains 0.147 acres.

This description was prepared in the absence of a complete and accurate title search and does not guarantee title.

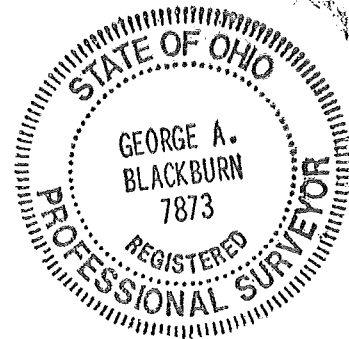
The above description was prepared from an actual field survey made by Blackburn Surveying LLC, George A. Blackburn, Registered Surveyor #7873, during the month of October 2022. Iron bars set are 5/8 inch by 30 inch reinforcing rods with plastic caps marked "Blackburn RS #7873." Bearings indicated herein are based on the centerline of Logan County Road 44 (60 feet wide) bearing South 82°35'29" East.

Description prepared by:

 10.2.2022

George A. Blackburn, R.S. #7873
6879 State Route 287
West Liberty, Ohio 43357
(937) 465-0424

INDEXED ON MAP
6607



10-17-2022



**DESCRIPTION OF SURVEY FOR
BETTY JO WELTY
6.000 ACRES
October 2, 2022**

The following described 6.000 acre tract of land is situated in Virginia Military Surveys 5049 and 7117, Zane Township, Logan County and Wayne Township, Champaign County, Ohio and being part of John Welty's and Betty Jo Welty's 8.000 acre tract described in Logan County Official Record Volume 1042, page 538 and in Champaign County Official Record Volume 500, page 388, said 6.000 acre tract more particularly described as follows:

Beginning at a one inch iron bar found at the intersection of the centerline of Logan County Road 44 (60 feet wide) with the centerline of Logan County Road 15 (50 feet wide), said iron bar also in the west line of V.M.S. 7117, the east line of V.M.S. 3231-10425 and at the northwest corner of said 8.000 acre tract;

Thence **South 82°35'29" East 457.42 feet**, following the centerline of Logan County Road 44 and the north line of said 8.000 acre tract, entering V.M.S. 7117, to a magnetic nail set;

Thence **South 16°09'30" East 501.42 feet**, departing from the centerline of Logan County Road 44, crossing said 8.000 acre tract, passing an iron bar set at 32.73 feet, leaving Zane Township, Logan County and entering Wayne Township, Champaign County, leaving V.M.S. 7117 and entering V.M.S. 5049, to an iron bar set in the north line of Jennifer L. Eaton's 5.047 acre tract described in Champaign County Official Record Volume 543, page 3373;

Thence **South 65°27'41" West 429.97 feet**, following the north line of said 5.047 acre tract and the south line of said 8.000 acre tract, passing a 5/8 inch iron bar found at 399.54 feet, to a 5/8 inch iron bar found in the centerline of Johnson Road (Wayne Township Road 146, 60 feet wide), said iron bar also in the west line of V.M.S. 5049 and in the east line of V.M.S. 3231-10425;

Thence **North 14°42'01" West 232.00 feet**, following the centerline of Johnson Road, the west line of V.M.S. 5049, the east line of V.M.S. 3231-10425 and the west line of said 8.000 acre tract, to a 5/8 inch iron bar found at the southwest corner of V.M.S. 7117;

Thence **North 15°30'22" West 338.98 feet**, following the centerline of Johnson Road, the west line of V.M.S. 7117, the east line of V.M.S. 3231-10425 and the west line of said 8.000 acre tract, to a 3/4 inch iron bar found in the north line of Wayne Township, Champaign County, in the south line of Zane Township, Logan County and at the southernmost point in the centerline of Logan County Road 15;

INDEXED ON MAP
6607

Thence **North 17°20'52" West 176.12 feet**, following the centerline of Logan County Road 15, the west line of V.M.S. 7117, the east line of V.M.S. 3231-10425 and the west line of said 8.000 acre tract, entering Zane Township, Logan County, to the **place of beginning, containing 6.000 acres** more or less and subject to all valid easements and restrictions of record.

The 6.000 acre tract of land described herein has 1.624 acres within Zane Township, Logan County (all within V.M.S. 7117) and 4.376 acres within Wayne Township, Champaign County (2.520 acres are within V.M.S. 5049 and 1.856 acres are within V.M.S. 7117).

The road right-of-way of Logan County Road 15, Logan County Road 44 and Wayne Township Road 146 (Johnson Road) contain 0.387 acres.

This description was prepared in the absence of a complete and accurate title search and does not guarantee title.

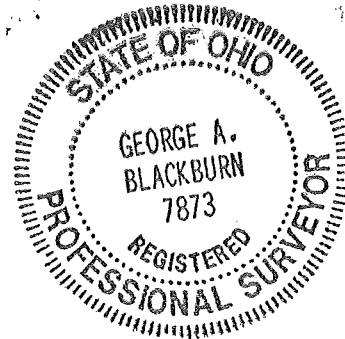
The above description was prepared from an actual field survey made by Blackburn Surveying LLC, George A. Blackburn, Registered Surveyor #7873, during the month of October 2022. Iron bars set are 5/8 inch by 30 inch reinforcing rods with plastic caps marked "Blackburn RS #7873." Bearings indicated herein are based on the centerline of Logan County Road 44 (60 feet wide) bearing South 82°35'29" East.

Description prepared by:

George A. Blackburn 10-2-2022

George A. Blackburn, R.S. #7873
6879 State Route 287
West Liberty, Ohio 43357
(937) 465-0424

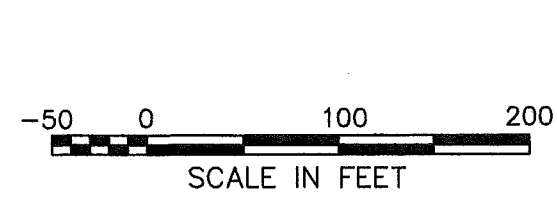
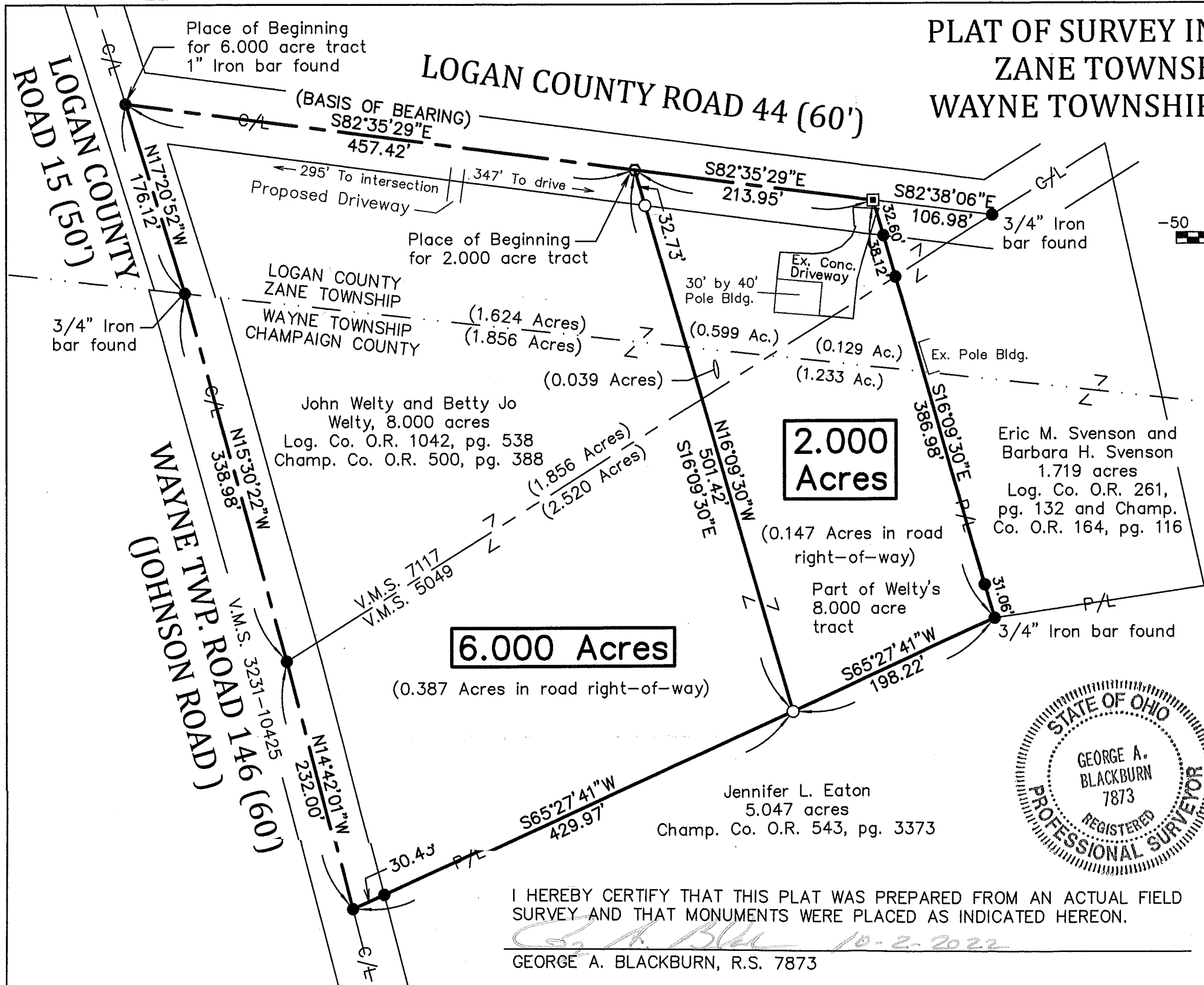
INDEXED ON MAP
6607



10-17-2022

APPROVED

PLAT OF SURVEY IN V.M.S. 5049 AND V.M.S. 7117 ZANE TOWNSHIP, LOGAN COUNTY AND WAYNE TOWNSHIP, CHAMPAIGN COUNTY, OHIO

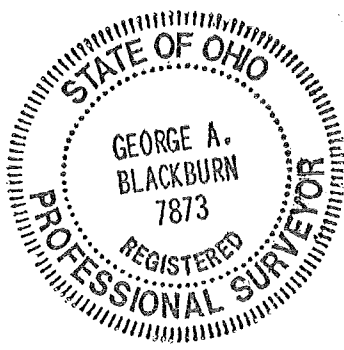


LEGEND

- Magnetic nail set
- ◻ 3/4" Iron bolt found
- 5/8" Iron bar found unless otherwise noted
- 5/8" Iron bar set

ACCESS MANAGEMENT REGULATIONS:
 County Road 44 is classified a local road.
 Minimum driveway spacing is 250'.
 Minimum stopping sight distance is to be greater than 495' at 55 mph.

NOTES:
 Speed limit is reduced at the curves.
 This plat was prepared in the absence of a complete and accurate title search and does not guarantee title.
 Contact County Health Department for septic system approval.



I HEREBY CERTIFY THAT THIS PLAT WAS PREPARED FROM AN ACTUAL FIELD SURVEY AND THAT MONUMENTS WERE PLACED AS INDICATED HEREON.

 GEORGE A. BLACKBURN, R.S. 7873

BLACKBURN SURVEYING, LLC
 6879 STATE ROUTE 287
 WEST LIBERTY, OHIO 43357
 (937) 465-0424

DATE: 10/2/2022
 SCALE: 1" = 100'
 FILE: Betty Jo Welty 9-22

REVISIONS	DATE	BY

PLAT PREPARED FOR BETTY JO WELTY

SHEET
 1
 OF 1

INDEXED ON MAP
 6607