

Lee Surveying and Mapping Co.



Farm Surveys • Lot Surveys • Topography • Subdivisions • Construction Layout

855 EAST SANDUSKY AVENUE
BELLEFONTAINE, OHIO 43311

(513) 593-5780

CLAYTON M. LEE, P.S.
JEFFREY I. LEE, P.S.

DESCRIPTION

Lying in V.M.S. 4606 and V.M.S. 12242 in both Zane Township, Logan County, Ohio and Allen Township, Union County, Ohio.

Being a re-tracement survey of that 100 acres (deed) as deeded and recorded in Volume 349, Page 888 (Tract 2) of the Logan County Records of Deeds and Volume 185, Page 49 of the Union County Records of Deeds and being more particularly described as follows:

Beginning at a railroad spike found at the inter-section of the center-lines of Logan County Township Road 157 and U.S. Route 33, marking the northeast corner of said deeded 100 acres.

THENCE, with the center-line of said U.S. Route 33, and the center-line of abandoned U.S. Route 33, S 32°-56'-38" E, a distance of 1463.18 feet to a railroad spike found at the Logan-Union County line.

THENCE, with the center-line of Union County Road 150-A, S 32°-57'-20" E, a distance of 1600.00 feet to a railroad spike (found).

THENCE, continuing with the said center-line of Union County Road 150-A, S 33°-18'-40" E, a distance of 90.94 feet to a railroad spike set at the southeast corner of said 100 acres.

THENCE, with the south line and fence line of said 100 acres, the following 3 bearings and distances:

- S 72°-26'-20" W, 803.29 feet to a 5/8" iron rod (set).
- N 31°-05'-22" W, 223.95 feet to a 5/8" iron rod (set).
- S 55°-29'-50" W, 747.24 feet to a corner stone (found).

THENCE, with the west line and fence line of the said 100 acre tract, N 32°-53'-51" W, a distance of 2761.53 feet to a railroad spike on the center-line of Township road 157.

THENCE, with the said center-line, N 57°-57'-58" E, a distance of 1511.27 feet to the point of beginning.

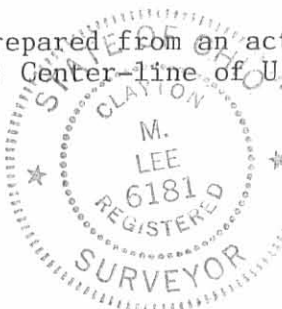
Containing 100.773 acres, of which 80.483 acres are in V.M.S. 4606-12242, Logan County and 20.29 acres are in V.M.S. 4606-12242, Union County; with 1.142 acres within highways in Union County and 2.482 acres within highways in Logan County.

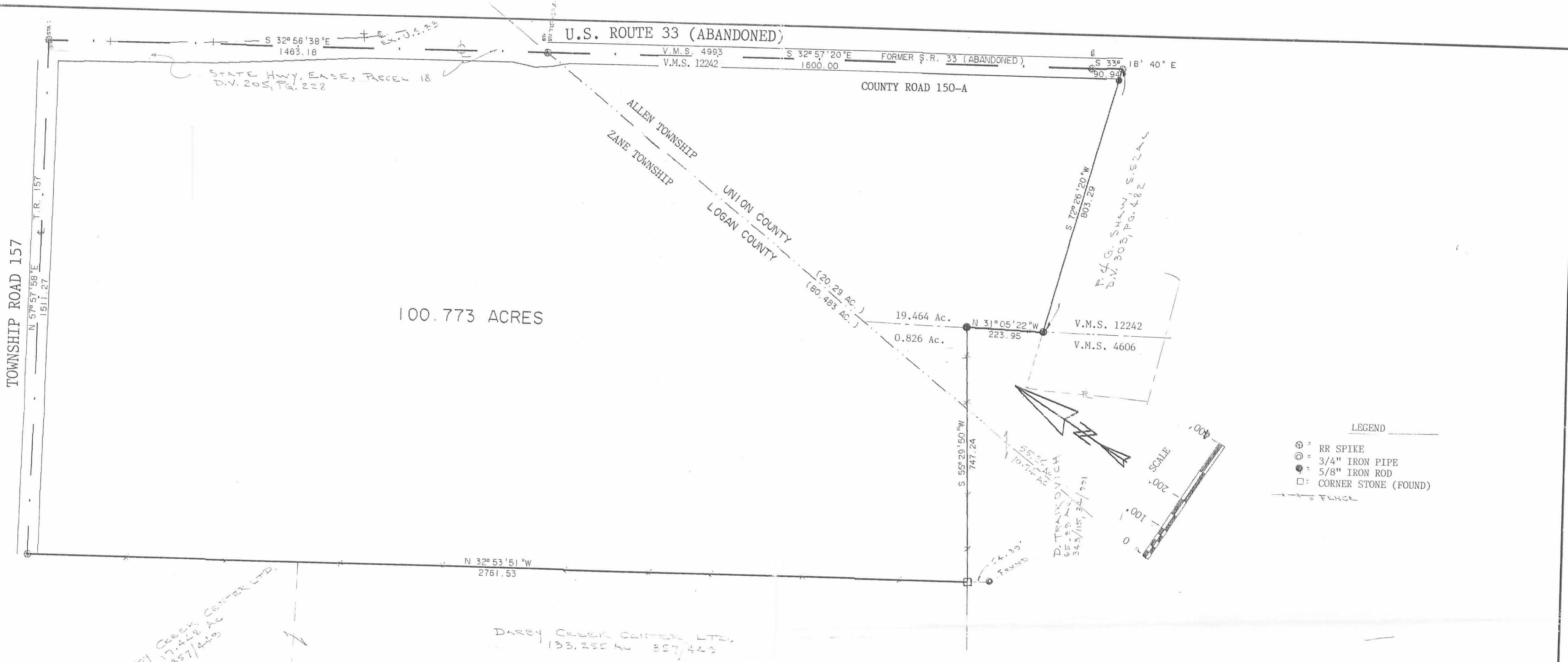
This description prepared from an actual field survey.
Basis for bearings: Center-line of U.S. Route 33 (S 32°-56'-38" E).

Prepared by:

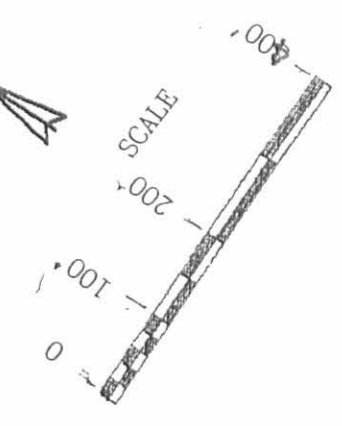
Clayton M. Lee
Registered Professional Surveyor No. 6181

INDEXED ON MAP
7765 ID





LEGEND
 ⊙ RR SPIKE
 ⊙ 3/4" IRON PIPE
 ⊙ 5/8" IRON ROD
 □ CORNER STONE (FOUND)
 --- FENCE



DARBY CREEK CENTER LTD.
 17.412 AC
 357/449

DARBY CREEK CENTER LTD.
 133.255 AC
 357/449

DESCRIPTION

Lying in V.M.S. 4606 and V.M.S. 12242 in both Zane Township, Logan County, Ohio and Allen Township, Union County, Ohio.

Being a re-tracement survey of that 100 acres (deed) as deeded and recorded in Volume 349, Page 888 (Tract 2) of the Logan County Records of Deeds and Volume 185, Page 49 of the Union County Records of Deeds and being more particularly described as follows:

Beginning at a railroad spike found at the inter-section of the center-lines of Logan County Township Road 157 and U.S. Route 33, marking the northeast corner of said deeded 100 acres.

THENCE, with the center-line of said U.S. Route 33, and the center-line of abandoned U.S. Route 33, S 32°-56'-38" E, a distance of 1463.18 feet to a railroad spike found at the Logan-Union County line.

THENCE, with the center-line of Union County Road 150-A, S 32°-57'-20" E, a distance of 1600.00 feet to a railroad spike (found).

THENCE, continuing with the said center-line of Union County Road 150-A, S 33°-18'-40" E, a distance of 90.94 feet to a railroad spike set at the southeast corner of said 100 acres.

THENCE, with the south line and fence line of said 100 acres, the following 3 bearings and distances:
 S 72°-26'-20" W, 803.29 feet to a 5/8" iron rod (set).
 N 31°-05'-22" W, 223.95 feet to a 5/8" iron rod (set).
 S 55°-29'-50" W, 747.24 feet to a corner stone (found).

THENCE, with the west line and fence line of the said 100 acre tract, N 32°-53'-51" W, a distance of 2761.53 feet to a railroad spike on the center-line of Township road 157.

THENCE, with the said center-line, N 57°-57'-58" E, a distance of 1511.27 feet to the point of beginning.

Containing 100.773 acres, of which 80.483 acres are in V.M.S. 4606-12242, Logan County and 20.29 acres are in V.M.S. 4606-12242, Union County; with 1.142 acres within highways in Union County and 2.482 acres within highways in Logan County.

This description prepared from an actual field survey.
 Basis for bearings: Center-line of U.S. Route 33 (S 32°-56'-38" E).

SURVEYOR'S CERTIFICATION

I hereby certify to LOCKLAND PRODUCTS CORPORATION and COMMONWEALTH LAND TITLE INSURANCE COMPANY that the above survey prepared by me entitled "Survey of 100.773 acres" was actually made upon the ground and that it and the information and lines of actual possession are the same, that the title lines and lines of actual possession are the same, that the size, location and type of buildings and improvements are as shown and all are within the boundary lines of the property, and that there are no easements, encroachments or uses affecting this property appearing from a careful physical inspection of the same, other than those shown and depicted thereon. This survey is made in accordance with the "Minimum Standard Detail Requirements for Land Title Surveys" jointly established and adopted by ALTA and ACSM in 1962.



Jeffrey I. Lee
 Registered Professional Surveyor No. 6359
 May 10, 1988

**RE-TRACEMENT SURVEY OF THE TEHAN 100 ACRE (DEED)
 100.773 ACRES (ACTUAL). V.M.S. 4406 and V.M.S. 12242
 ZANE TOWNSHIP, LOGAN COUNTY and ALLEN TOWNSHIP, UNION
 COUNTY, OHIO.**

INDEXED ON MAP
 7765 1P

TOLERANCES (EXCEPT AS NOTED)	REVISIONS			DRAWN BY	SCALE	MATERIAL
	NO.	DATE	BY			
DECIMAL ±	1					
FRACTIONAL ±	2					
ANGULAR ±	3					
	4			CHK'D	DATE	DRAWING NO.
	5			TRACED	APP'D	1657-2