

Received 2-20-90

OK 2-21-90

**LESLIE H. GEESLIN**  
REGISTERED SURVEYOR NO. 5248  
P. O. BOX 274  
RUSHSVLVANIA, OHIO 43347

TELEPHONE: (513) 468-2793

PAINTER SURVEY

February, 1990

The following described real estate situated in the State of Ohio, County of Logan, Township of Zane, being in Virginia Military Survey 3688 and more particularly described as follows:

Beginning at a 1/2 inch iron bar set in the centerline of County Highway 44, that is S. 52° 00' W. 1301.44 feet from a p. k. nail found at the intersection of the centerlines of County Highway 44 State Route 559.

Thence S. 38° 00' E. 520.36 feet to a 5/8 inch iron bar set, passing a 5/8 inch iron bar set at 30.00 feet.

Thence S. 52° 00' W. 211.33 feet to a 5/8 inch iron bar set.

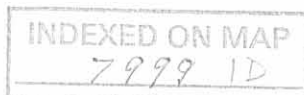
Thence N. 38° 00' W. 520.36 feet to a 1/2 inch iron bar set in the centerline of said C. H. 44, passing a 5/8 inch iron bar set at 490.36 feet.

Thence with said centerline N. 52° 00' E. 211.33 feet to the place of beginning.

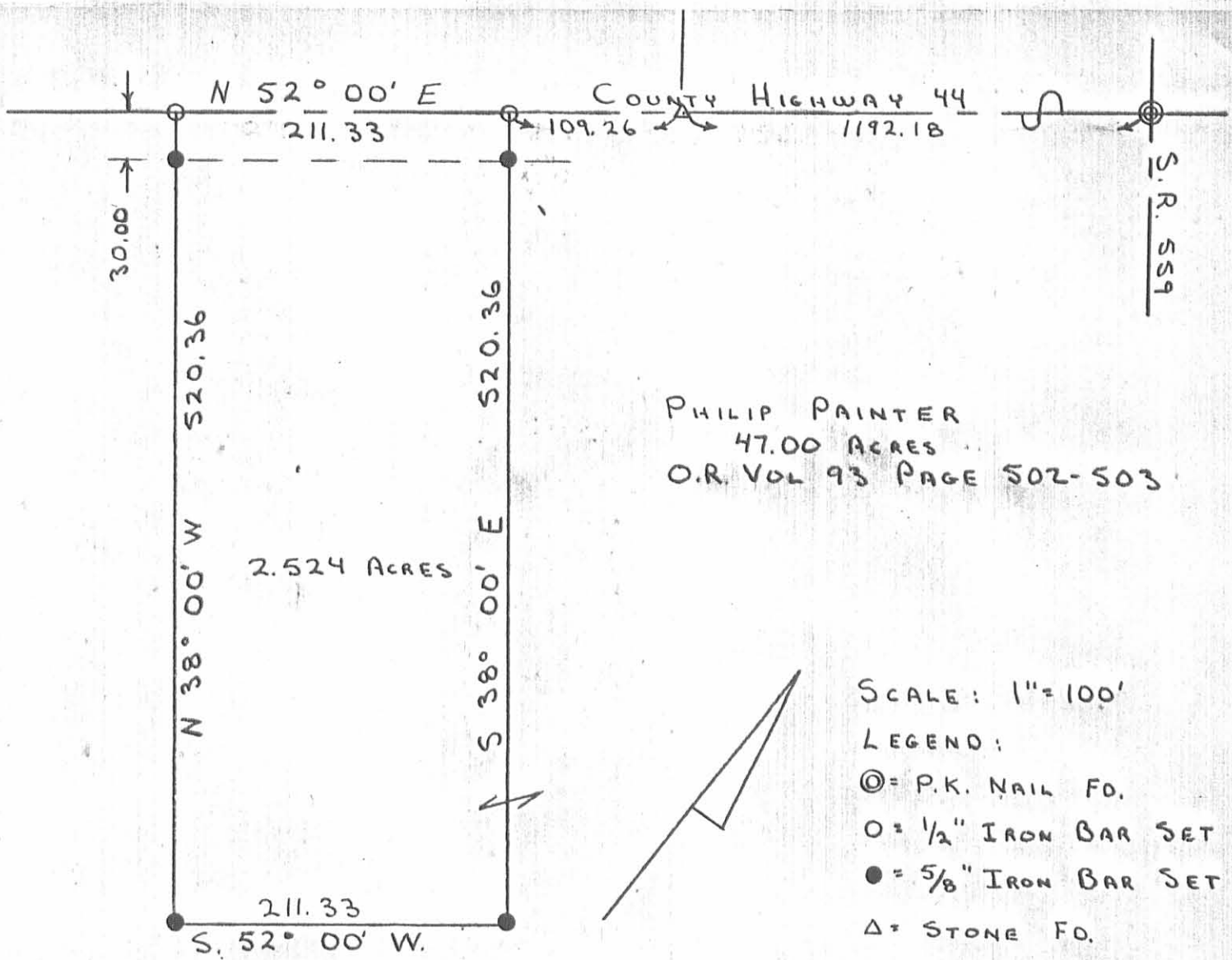
Containing 2.524 acres more or less.

The above described 2.524 acre tract being on the north side of Philip Painter's 47.00 acre tract as described in O. R. Vol. 93, Page 502-503.

Bearings are based on an assumed bearing for the centerline of County Highway 44, in this field survey.



*Leslie H. Geeslin*



PHILIP PAINTER  
 47.00 ACRES  
 O.R. VOL 93 PAGE 502-503

SCALE: 1" = 100'

LEGEND:

- ⊙ = P.K. NAIL FD.
- = 1/2" IRON BAR SET
- = 5/8" IRON BAR SET
- △ = STONE FD.

SURVEY OF A 2.524 ACRE TRACT  
 IN V.M.S. 3688, ZANE TWP.,  
 LOGAN CO., OHIO. FEBRUARY 14, 1990



INDEXED ON MAP  
 7999 IP

*Leslie H. Geeslin*  
 LESLIE H. GEESLIN  
 RUSHSVANIA, OHIO

# Lee Surveying and Mapping Co.

Land Surveys • Topography • Subdivisions • Construction Layout

117 N. Madriver St.  
Bellefontaine OH 43311Phone: (937) 593-7335  
Fax: (937) 593-7444  
surveys@lsminc.us

## PAINTER 46.436 ACRES

Lying in Virginia Military Survey 3688, Zane Township, Logan County, Ohio.

Being all of the Robert D. and Judy L. Painter 50 1/2 acre tract as deeded and described in Official Record 227, Page 549, Tract One of the Logan County Records of Deeds and being more particularly described as follows:

**BEGINNING** at a railroad spike found at the southeast corner of Virginia Military Survey 4953 and the northeast corner of said Virginia Military Survey 3688 at the intersection of the center-lines of Ohio Route 559 (60 feet wide) and County Highway 44 (60 feet wide);

THENCE, with the east line of said Virginia Military Survey 3688 and the center-line of said Ohio Route 559, S 38°-19'-15"E, a distance of 776.36 feet to a MAG nail set at the northeast corner of the William L. Hempy and Sharon K. Hempy 92-1/2 acre tract as deeded and described in O.R. 135, Pg. 251, Tract II;

THENCE, with the north line of said 92-1/2 acre tract, S 51°-48'-26"W, a distance of 2738.59 feet to a point, passing a 5/8 inch iron rod set at a distance of 30.00 feet and 6 inch wood corner post found at a distance of 2738.40 feet on the northeast line of the Chamberlain Farms, LLC, 64.401 acre tract as deeded and described in O.R. 1078, Pg. 569, Tract I;

THENCE, with the east line said 64.401 acre tract, N 38°-09'-40"W, a distance of 777.35 feet to a MAG nail found on the north line of said Virginia Military Survey 3688, the south line of said Virginia Military Survey 4953 and the center-line of said County Highway 44, passing a 5/8 inch iron rod set at 1.00 feet and a 5/8 inch iron rod found at a distance of 747.35 feet;

THENCE, with said north line of Virginia Military Survey 3688 and said center-line of County Highway 44, N 51°-36'-52"E, a distance of 1221.25 feet to a railroad spike found at the northwest corner of the Marzetta B. Painter 2.524 acre tract as deeded and described in O.R. 103, Pg. 471;

THENCE, with the lines of said 2.524 acre tract, the following three (3) courses:

- 1) S 37°-58'-33"E, a distance of 521.00 feet to a 5/8 inch iron rod found, passing a 5/8 inch iron rod found at a distance of 29.86 feet;
- 2) N 51°-46'-04"E, a distance of 211.82 feet to a 5/8 inch iron rod found.
- 3) N 38°-02'-13"W, a distance of 520.14 feet to a railroad spike found on the north line of said Virginia Military Survey 3688 and said center-line of County Highway 44, passing a 5/8 inch iron rod found at a distance of 490.16 feet.

INDEXED ON MAP  
7999

# Lee Surveying and Mapping Co.

Land Surveys • Topography • Subdivisions • Construction Layout

117 N. Madriver St.  
Bellefontaine OH 43311



Phone: (937) 593-7335  
Fax: (937) 593-7444  
surveys@lsminc.us

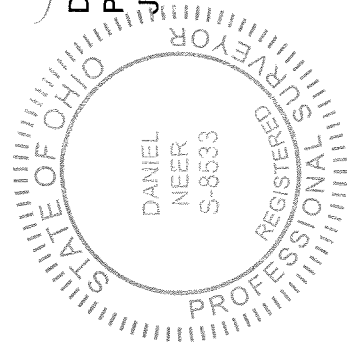
THENCE, with said north line of Virginia Military Survey 3688 and said center-line of County Highway 44, N 52°-00'-00"E, a distance of 1303.92 feet to the **POINT OF BEGINNING**, passing MAG nails found at a distance of 109.06 feet and a distance of 452.56 feet.

Containing 46.436 acres, more or less, of which 2.257 acres lie within the highway rights-of-way.

Property is subject to any and all previous easements and rights-of-way of record.

The basis for bearings, described herein, is the east line of Virginia Military Survey 3688, being S 38°-19'-15"E, and all other bearings are from angles and distances measured in a field survey by Lee Surveying and Mapping Co. on January 15, 2018.

Description prepared by:



*D. Neer*  
Daniel A. Neer

Professional Surveyor No. 8533  
January 16, 2018

63281217

INDEXED ON MAP

7999

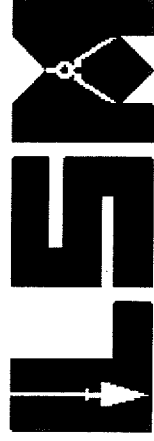
1-26-18

# Lee Surveying and Mapping Co.

Land Surveys • Topography • Subdivisions • Construction Layout



117 N. Madriver St.  
Bellefontaine OH 43311



Phone: (937) 593-7335  
Fax: (937) 593-7444  
surveys@lsminc.us

## PAINTER 82.503 ACRES

Lying in Virginia Military Surveys 4953 and 3680, Zane Township, Logan County, Ohio.

Being all of the Robert D. and Judy L. Painter 13.81 acre tract, 3.38 acre tract, 9.50 acre tract, 2 acre tract, 7.50 acre tract, 1 acre tract and 43 acre tract as deeded and described in Official Record 227, Page 549, Tract Two, Tract Three, Tract Four, Tract Six, Second Tract One, Second Tract Two and Second Tract Three of the Logan County Records of Deeds and being more particularly described as follows:

**BEGINNING** at a railroad spike found at the southeast corner of said Virginia Military Survey 4953 and the northeast corner of Virginia Military Survey 3688 at the intersection of the center-lines of Ohio Route 559 (60 feet wide) and County Highway 44 (60 feet wide);

**THENCE**, with the south line of said Virginia Military Survey 4953 and said center-line of County Highway 44, S 52°-00'-00"W, a distance of 851.36 feet to a MAG nail set at the southeast corner of the James Lewis Griffin and Marylyn Virginia Griffin, Co-Trustees, 2-3/4 acre tract as deeded and described in O.R. 564, Pg. 771;

**THENCE**, with the east line of the said 2-3/4 acre tract, N 40°-13'-10"W, a distance of 450.36 feet to a 5/8 inch iron rod set, passing a 5/8 inch iron rod set at a distance of 30.02 feet at the northeast corner of said 2-3/4 acre tract;

**THENCE**, with the north lines of said 2-3/4 acre tract and the James Lewis Griffin and Marylyn Virginia Griffin, Co-Trustees, 5/8 acre tract as deeded and described in O.R. 564, Pg. 771, S 52°-00'-00"W, a distance of 332.09 feet to a 5/8 inch iron rod set;

**THENCE**, with the west line of said 5/8 acre tract, S 38°-46'-02"E, a distance of 450.06 feet to a MAG nail set on the south line of said Virginia Military Survey 4953 and said center-line of County Highway 44, passing a 5/8 inch iron rod set at a distance of 420.06 feet;

**THENCE**, with the south line of said Virginia Military Survey 4953 and said center-line of County Highway 44, the following two (2) courses:

- 1) S 52°-00'-00"W, a distance of 320.32 feet to a railroad spike found, passing a railroad spike found at a distance of 109.06 feet;
- 2) S 51°-36'-52"W, a distance of 1299.47 feet to a MAG nail found at the southeast corner of the Four Henry LLC, 179.685 acre tract as deeded and described in O.R. 1076, Pg. 943, Tract 6, passing a MAG nail found at a distance of 1221.25 feet;

**THENCE**, with the lines of the said 179.685 acre tract, the following three (3) courses:

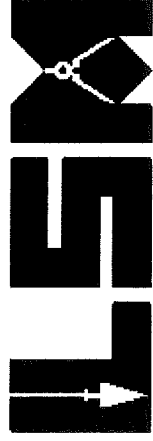
- 1) N 05°-30'-55"E, a distance of 1330.54 feet to a 5/8 inch iron rod set, passing a 5/8 inch iron rod found at a distance of 41.37 feet;
- 2) N 01°-58'-08"E, a distance of 288.75 feet to a 5/8 inch iron rod set;



# Lee Surveying and Mapping Co.

Land Surveys • Topography • Subdivisions • Construction Layout

117 N. Madriver St.  
Bellefontaine OH 43311



Phone: (937) 593-7335  
Fax: (937) 593-7444  
surveys@lsmc.us

3) N 36°-56'-34"W, a distance of 1029.02 feet to a 1/2 inch iron rod found on the center-line of Township Road 177 at Station 108+72.7 (Logan County Engineer's Field Book 599, Pg. 40), passing a concrete post found at a distance of 979.88 feet;

THENCE, within the right-of-way of Township Road 172 (60 feet wide), the following two (2) courses:

1) N 88°-41'-49"E, a distance of 609.95 feet to a 5/8 inch iron rod found;  
2) N 62°-50'-38"E, a distance of 1280.52 feet to a MAG nail found on the center-line of said Ohio Route 559;

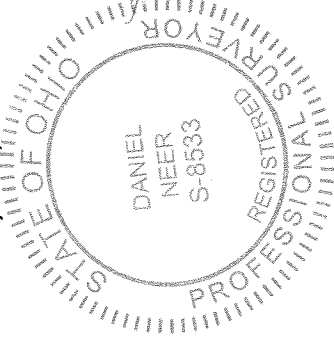
THENCE, with said center-line, S 27°-56'-51"E, a distance of 319.63 feet to a railroad spike found on the east line of said Virginia Military Survey 4953 and the west line of Virginia Military Survey 3680;

THENCE, with said center-line and east line, S 38°-08'-16"E, a distance of 1286.17 feet to the **POINT OF BEGINNING**.

Containing 82.503 acres, more or less, of which 3.670 acres lie within the highway rights-of-way, of which 82.292 acres lie within Virginia Military Survey 4953 and 0.211 acre lies within Virginia Military Survey 3680.

Property is subject to any and all previous easements and rights-of-way of record.

The basis for bearings, described herein, is the east line of Virginia Military Survey 3688, being S 38°-19'-15"E, and all other bearings are from angles and distances measured in a field survey by Lee Surveying and Mapping Co. on January 15, 2018.



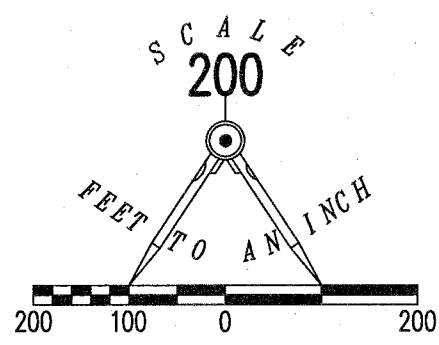
Description prepared by:

Daniel A. Neer  
Professional Surveyor No. 8533  
January 16, 2018

63281217

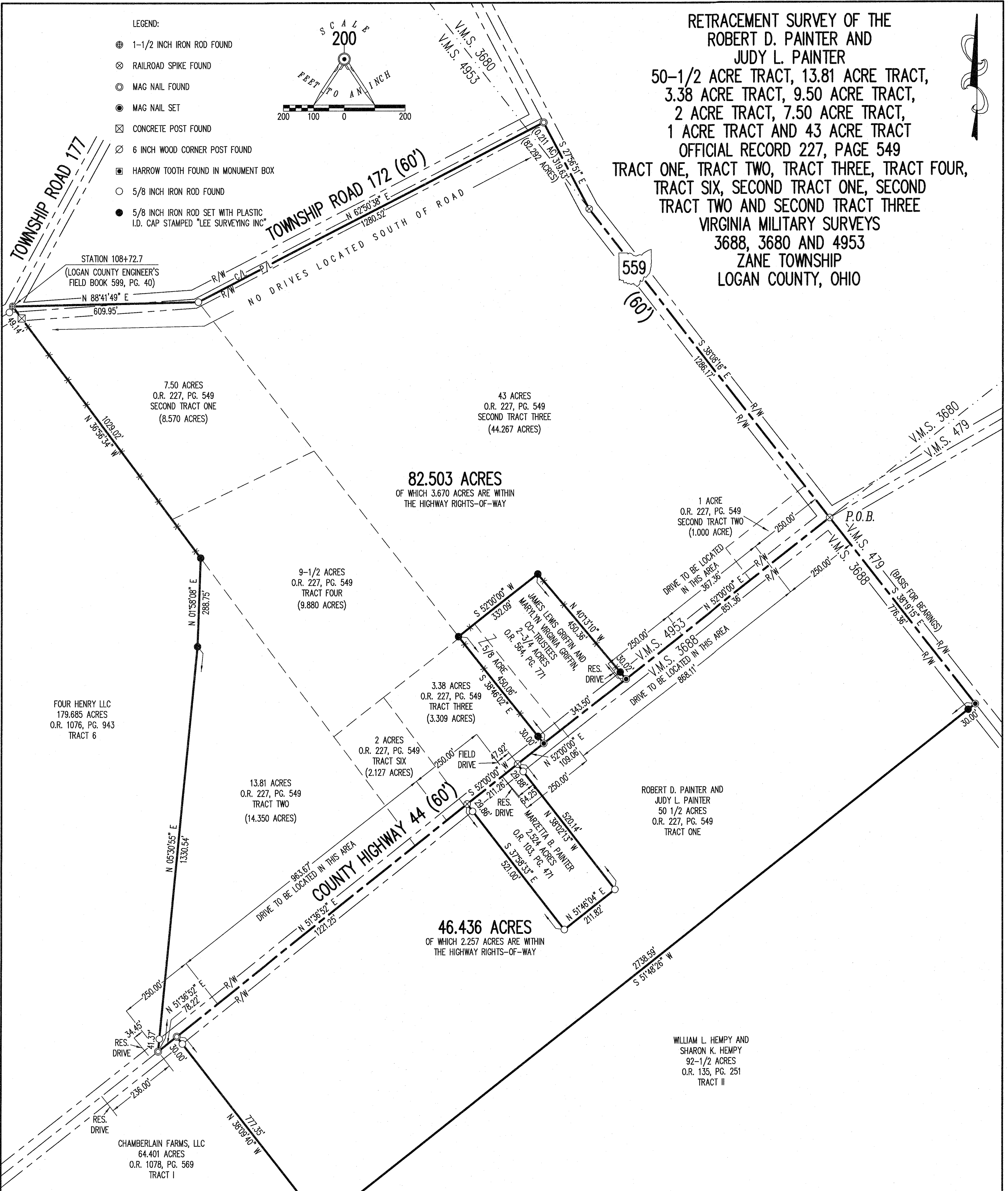
INDEXED ON MAP  
7999

- LEGEND:
- ⊕ 1-1/2 INCH IRON ROD FOUND
  - ⊗ RAILROAD SPIKE FOUND
  - ⊙ MAG NAIL FOUND
  - MAG NAIL SET
  - ⊠ CONCRETE POST FOUND
  - ⊞ 6 INCH WOOD CORNER POST FOUND
  - ⊡ HARROW TOOTH FOUND IN MONUMENT BOX
  - 5/8 INCH IRON ROD FOUND
  - 5/8 INCH IRON ROD SET WITH PLASTIC I.D. CAP STAMPED "LEE SURVEYING INC."



RETRACEMENT SURVEY OF THE  
ROBERT D. PAINTER AND  
JUDY L. PAINTER

50-1/2 ACRE TRACT, 13.81 ACRE TRACT,  
3.38 ACRE TRACT, 9.50 ACRE TRACT,  
2 ACRE TRACT, 7.50 ACRE TRACT,  
1 ACRE TRACT AND 43 ACRE TRACT  
OFFICIAL RECORD 227, PAGE 549  
TRACT ONE, TRACT TWO, TRACT THREE, TRACT FOUR,  
TRACT SIX, SECOND TRACT ONE, SECOND  
TRACT TWO AND SECOND TRACT THREE  
VIRGINIA MILITARY SURVEYS  
3688, 3680 AND 4953  
ZANE TOWNSHIP  
LOGAN COUNTY, OHIO



82.503 ACRES  
OF WHICH 3.670 ACRES ARE WITHIN  
THE HIGHWAY RIGHTS-OF-WAY

46.436 ACRES  
OF WHICH 2.257 ACRES ARE WITHIN  
THE HIGHWAY RIGHTS-OF-WAY

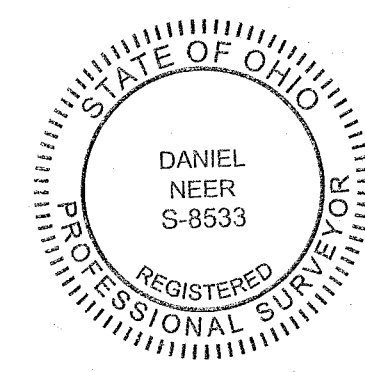
**ACCESS MANAGEMENT NOTE:**  
TOWNSHIP ROAD 172 AND COUNTY HIGHWAY 44  
ARE CLASSIFIED AS LOCAL ROADS  
MINIMUM DRIVE SPACING IS 250'  
MINIMUM STOPPING SIGHT DISTANCE IS >495 (55 MPH)

**NOTE:**  
THIS SURVEY WAS PREPARED IN THE ABSENCE OF  
A COMPLETE AND ACCURATE TITLE SEARCH AND  
DOES NOT GUARANTEE TITLE.

2 WORKING DAYS  
**BEFORE YOU DIG**  
CALL TOLL FREE **800-362-2764**  
OHIO UTILITIES PROTECTION SERVICE.

**DEED AND SURVEY REFERENCES:**  
PLAT OF SURVEY BY TIMOTHY L. GUIDER, P.S. 7752  
DATED SEPTEMBER 21, 2016 (JOB #16168 BROWN)  
O.R. 103, PG. 471  
O.R. 135, PG. 251  
O.R. 227, PG. 549  
O.R. 564, PG. 771  
O.R. 1076, PG. 943  
O.R. 1078, PG. 569

**BASIS FOR BEARINGS:**  
THE BASIS FOR BEARINGS SHOWN HEREON IS THE EAST  
LINE OF VIRGINIA MILITARY SURVEY 3688.



SURVEYED BY:  
*D. Neer*  
DANIEL A. NEER  
PROFESSIONAL SURVEYOR NO. 8533  
JANUARY 15, 2018

COPYRIGHT 2018 BY:  
**LEE SURVEYING & MAPPING CO.**  
117 North Madriver Street  
BELLEFONTAINE, OHIO 43311  
(937) 593-7335  
WWW.LSMINC.US  
surveys@lsminc.us



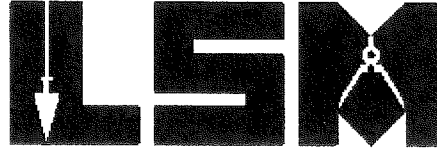
11-16-18

# Lee Surveying and Mapping Co.

Land Surveys • Topography • Subdivisions • Construction Layout



117 N. Madriver St.  
Bellefontaine OH 43311



Phone: (937) 593-7335  
Fax: (937) 593-7444  
surveys@lee-surveying.com

## GRIFFIN, CO-TRUSTEES 3.491 ACRES

Lying in Virginia Military Survey 4953, Zane Township, Logan County, Ohio (all records referenced herein refer to the Logan County Records of Deeds).

Being all of the James Lewis Griffin and Marylyn Virginia Griffin, Co-Trustees, 2-3/4 acre and 5/8 acre tracts as deeded and described in Official Record 564, Page 771 and being more particularly described as follows:

**COMMENCING** at a railroad spike found at a common corner to Virginia Military Surveys 4953, 3688, 3680 and 479, being at the intersection of the center-lines of Ohio Route 559 (60 feet wide) and County Highway 44 (60 feet wide);

THENCE, with a common line to said Virginia Military Surveys 4953 and 3688 and the center-line of said County Highway 44, S 52°-00'-00" W, a distance of 851.36 feet to a MAG nail found at the **TRUE POINT OF BEGINNING**, being the southeast corner to said 2-3/4 acre tract and a southwest corner to the Robert Painter II and Philip Painter, Co-Trustees, 82.503 acre tract as deeded and described in Official Record 1293, Page 58;

THENCE, continuing with said Surveys and center-line and the south line of said 2-3/4 acre and 5/8 acre tracts, S 52°-00'-00" W, a distance of 343.50 feet to a MAG nail found at a corner common to said 82.503 acre and 5/8 acre tracts;

THENCE, with the lines of said 82.503 acre tract, the following three (3) courses:

- 1) N 38°-46'-02" W, passing a 5/8 inch iron rod found (I.D. cap stamped "Lee Surveying Inc") at a distance of 30.00 feet, a total distance of 450.06 feet to a 5/8 inch iron rod found (I.D. cap stamped "Lee Surveying Inc");
- 2) N 52°-00'-00" E, a distance of 332.09 feet to a 5/8 inch iron rod found (I.D. cap stamped "Lee Surveying Inc"); and

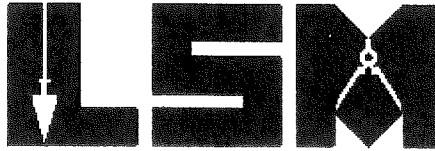
INDEXED ON MAP  
7999



# Lee Surveying and Mapping Co.

Land Surveys • Topography • Subdivisions • Construction Layout

117 N. Madriver St.  
Bellefontaine OH 43311



Phone: (937) 593-7335  
Fax: (937) 593-7444  
surveys@lee-surveying.com

- 3) S 40°-13'-10" E, passing a 5/8 inch iron rod found (I.D. cap stamped "Lee Surveying Inc") at a distance of 420.34 feet, a total distance of 450.36 feet to the **POINT OF BEGINNING**.

Containing 3.491 acres, more or less, of which 0.235 acre is within the highway right-of-way.

Property is subject to any and all previous easements and rights-of-way of record.

The basis for bearings, described herein, is an assumed bearing for the center-line of County Highway 44, being S 52°-00'-00" W . Distances are expressed in U.S. Survey Feet. All other measurements are from angles and distances measured in a field survey by Lee Surveying and Mapping Co. on November 7, 2018.

Description prepared by:

A handwritten signature in black ink, appearing to read 'D. Neer', is written over the typed name.

Daniel A. Neer  
Professional Surveyor No. 8533  
November 9, 2018

63281018

INDEXED ON MAP

7999

