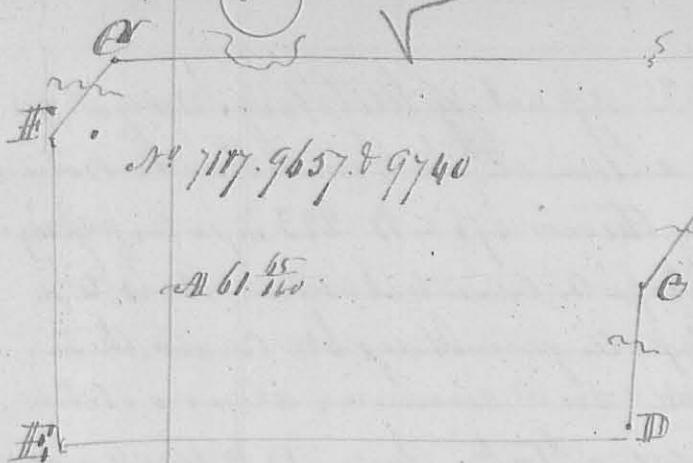


N^o 264

8340

1834

211.



N 71^o 96' 57" E 9740

A 61^o 45' 110

Surveyed Jan^y 7th 1835 for Wood
 & Allen a tract of land on the water
 of Early, as shown by the annexed
 plat Beginning at Ash & Lewis
 & Maple (Ash & Maple down) see
 letter A Easterly corner to Richard
 Kennon Survey N^o 4570 in the line
 of R. P. Owen Survey N^o 3680 then

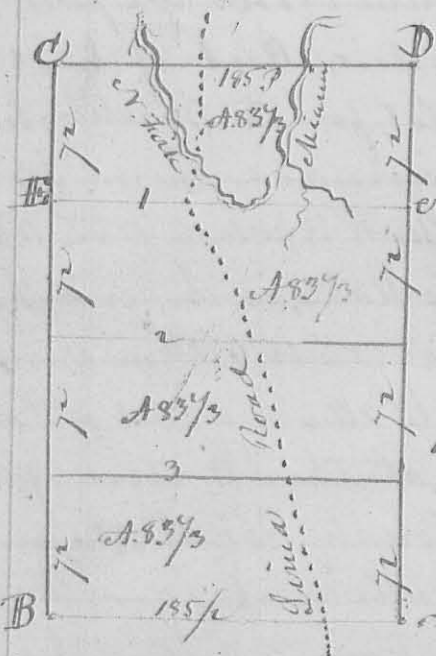
with his line N 38^o E 16 poles to a stone, then South 24 poles crossing a small
 branch to a stone, then N 31^o E 30 poles, crossing a small branch to a stone, then
 S 52^o W 118 poles to a small Iron rod, then N 29^o W 63¹/₂ poles, to a stone, then
 N 40^o E 9 poles to a stone, then N 20^o W 16³/₄ poles, crossing a small branch
 to a stone, then N 56^o E 129 poles, crossing several small branches to
 the beginning. Containing 41¹/₂ Acres.

Elbert Sharp
 Levi Sharp & Ch. Carr.

David Hopkins L. Surveyor

N^o 265

8341



This plat represents A. Maples part of Survey
 N^o 10503 on the water of Miami Surveyed
 February 4th 1834 on application of John
 Harrod as follows. Beginning at a black
 hickory and a hump South with plat, then
 N 78^o W 185 poles to a stake, near an Ash & black
 pine on road, then N 12^o W 288 poles, to a swamp
 Alker & Gray, Ash, thence N 78^o E 185 poles, cross-
 ing North into two, and then a road into
 to a Beech in the block line, to letter D, then
 S 12^o E 288 poles, to the beginning 33 3/4 acres.

4th Street Sub divided this survey into four lots of 85 3/4 Acres, each. South
 & Street plat, beginning for the first division line at the 72 poles S 12^o E from
 Ch. Carr C. at a Gray Ash, then N 78^o E 185 poles, crossing big road North part
 (a bend of) area, two small branches to a dogwood cherry & hickory
 2nd division line begins at Logan & Lyman in the East line of the
 Survey S 12^o E 72 poles from the termination of the first division line,
 then N 78^o W 185 poles, crossing the big road to two Hornbeam & Elm trees,
 then begin S 12^o E 72 poles from the stake corner, at a Beech, & Hornbeam, run
 N 85^o E 185 poles, to small Ash, Elm & Hickory

D. Hopkins L. Surveyor