

REC'D 2-22-95 JML OK ✓



Lee Surveying and Mapping Co.



Farm Surveys • Lot Surveys • Topography • Subdivisions • Construction Layout

143 EAST COLUMBUS AVENUE
BELLEFONTAINE, OHIO 43311

(513) 593-7335

JEFFREY I. LEE, P.S.

FLORENCE B. SHIRK 6.885 ACRES

Lying in Virginia Military Survey 3159, Zane Township, Logan County, Ohio.

Being out of the Florence B. Shirk original 115.69 acre tract as deeded and described in Volume 400, Page 309 of the Logan County Records of Deeds and being more particularly described as follows:

Beginning at a PK nail found at the intersection of center-lines of County Highway 144 and County Highway 153.

THENCE, with the center-line of County Highway 153, S 55°-54'-20" E, a distance of 86.13 feet to a railroad spike found.

THENCE, continuing with the center-line of County Highway 153, S 51°-20'-01" E, a distance of 289.59 feet to a PK nail set at the TRUE POINT OF BEGINNING.

THENCE, with the center-line of County Highway 153, S 51°-20'-01" E, a distance of 808.87 feet to a railroad spike found.

THENCE, continuing with the center-line of County Highway 153, S 53°-58'-51" E, a distance of 141.93 feet to a railroad spike found.

THENCE, with the west line of the Jimmy Baker, etal Trustees 10.05 acre tract (O.R. 141, Pg. 206), S 8°-49'-32" W, a distance of 340.49 feet to a 5/8 inch iron rod set.

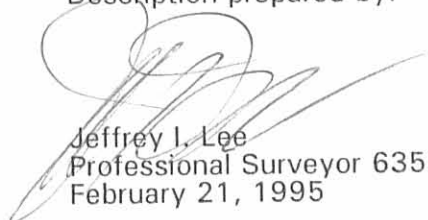
THENCE, N 51°-20'-01" W, a distance of 1119.33 feet to a 5/8 inch iron rod found.

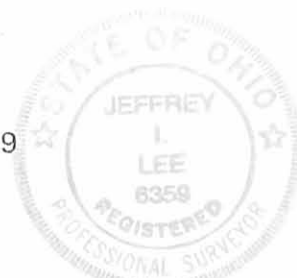
THENCE, with the easterly line of the Richard Lusby 6.88 acre tract (Vol. 408, Pg. 73), N 38°-31'-07" E, a distance of 288.79 feet to the point of beginning.

Containing 6.885 acres of which 0.661 acre is within the highway right-of-way.

The basis for bearings is based upon the center-line of County Highway 153 immediately southeast of the intersection with County Highway 144 being S 55°-54'-20" E, and all other bearings are from angles and distances measured in a field survey by Lee Surveying and Mapping Company on February 21, 1995.

Description prepared by:

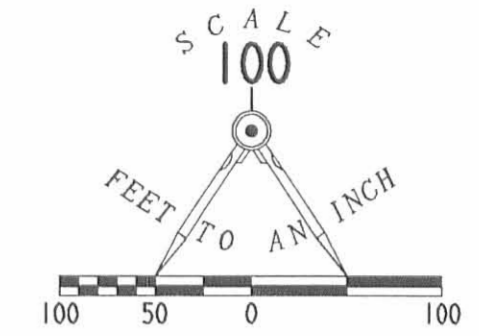

Jeffrey I. Lee
Professional Surveyor 6359
February 21, 1995



L 2263

ORIGINAL STAMP IN GREEN

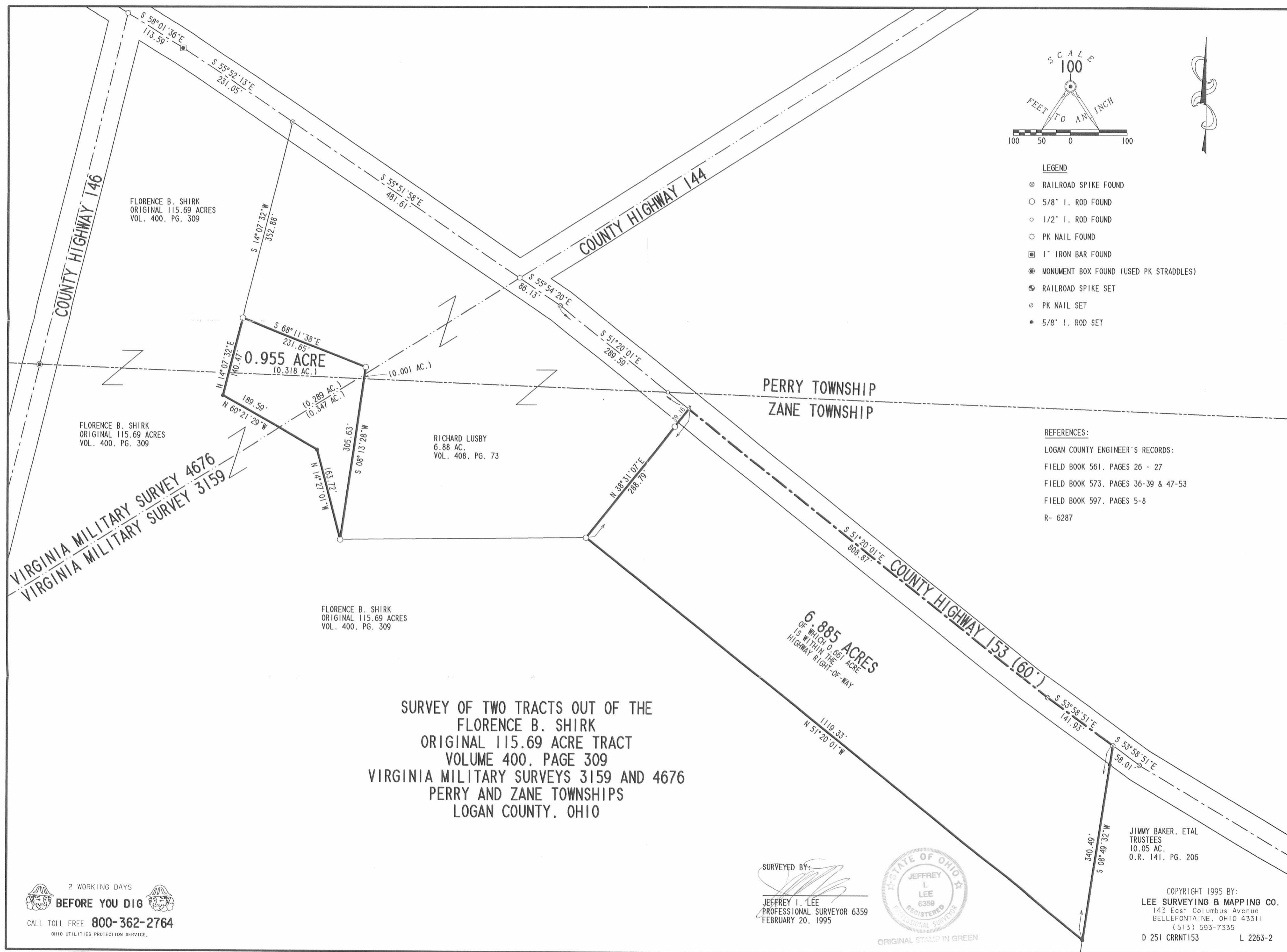
INDEXED ON MAP
8991 1D



- LEGEND**
- ⊗ RAILROAD SPIKE FOUND
 - 5/8" I. ROD FOUND
 - 1/2" I. ROD FOUND
 - PK NAIL FOUND
 - ⊠ 1" IRON BAR FOUND
 - ⊙ MONUMENT BOX FOUND (USED PK STRADDLES)
 - ⊕ RAILROAD SPIKE SET
 - ⊙ PK NAIL SET
 - 5/8" I. ROD SET

REFERENCES:
 LOGAN COUNTY ENGINEER'S RECORDS:
 FIELD BOOK 561, PAGES 26 - 27
 FIELD BOOK 573, PAGES 36-39 & 47-53
 FIELD BOOK 597, PAGES 5-8
 R- 6287

**SURVEY OF TWO TRACTS OUT OF THE
 FLORENCE B. SHIRK
 ORIGINAL 115.69 ACRE TRACT
 VOLUME 400, PAGE 309
 VIRGINIA MILITARY SURVEYS 3159 AND 4676
 PERRY AND ZANE TOWNSHIPS
 LOGAN COUNTY, OHIO**



FLORENCE B. SHIRK
 ORIGINAL 115.69 ACRES
 VOL. 400, PG. 309

FLORENCE B. SHIRK
 ORIGINAL 115.69 ACRES
 VOL. 400, PG. 309

RICHARD LUSBY
 6.88 AC.
 VOL. 408, PG. 73

FLORENCE B. SHIRK
 ORIGINAL 115.69 ACRES
 VOL. 400, PG. 309

JIMMY BAKER, ETAL
 TRUSTEES
 10.05 AC.
 O.R. 141, PG. 206

2 WORKING DAYS
BEFORE YOU DIG
 CALL TOLL FREE **800-362-2764**
 OHIO UTILITIES PROTECTION SERVICE.

SURVEYED BY:

JEFFREY I. LEE
 PROFESSIONAL SURVEYOR 6359
 FEBRUARY 20, 1995



ORIGINAL STAMP IN GREEN

COPYRIGHT 1995 BY:
LEE SURVEYING & MAPPING CO.
 143 East Columbus Avenue
 BELLEFONTAINE, OHIO 43311
 (513) 593-7335
 D 251 CRRT153 L 2263-2

INDEXED ON MAP
 89911P