

FB 711

Twp. Road No. 151
 Lane Twp. Logan Co., Ohio
 V.M.S. 3480

174+32.05 - P.I. - R.R. Spike Fd.

shown as Sta. 174+32.5
 in F.B.K. 558, pg. 42 & on
 R/W plans L-25.

161+23.37 - P.I. - R.R. Spike Set -
 Intersection E.T.R. 151 w/
 E.S.R. 287

160+43.05 - P.O.T. - R.R. Spike Fd.

144+93 - P.I. - 5/8" iron Fd. -

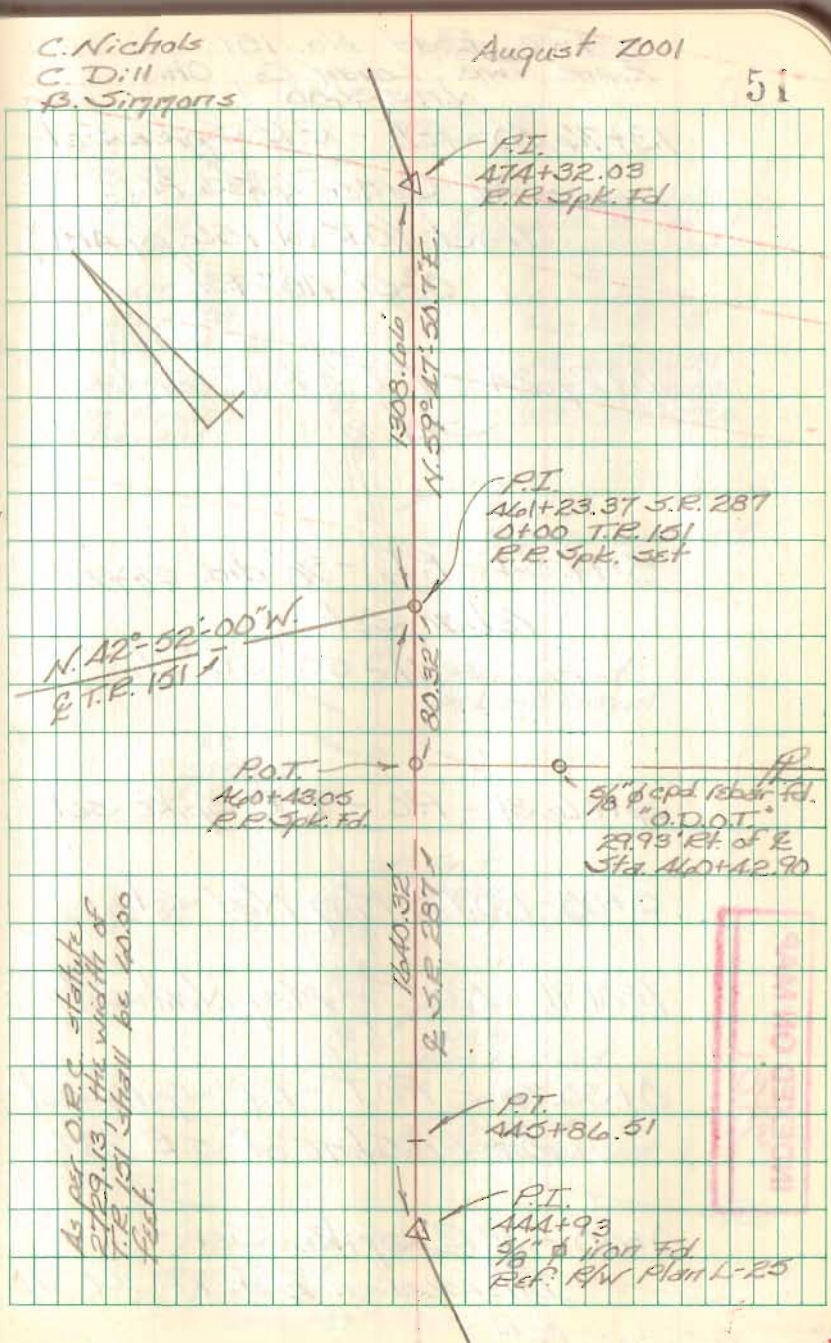
Ref. 1983 "Lee" Survey
 (Index No. 4896) - Also see
 F.B.K. 558, pg. 41 & R/W plan
 L-25

INDEXED ON MAP
 9481

C. Nichols
 C. Dill
 B. Simmons

August 2001

51



As per O.R.C. statute
 2729.13, the width of
 T.R. 151 shall be 40.00
 feet.

1640.32
 E.S.R. 287

P.I.
 144+93

P.I.
 144+93
 5/8" iron Fd.
 Ref. R/W Plan L-25

FB 711

Twp. Road No. 151
Zane Twp., Logan Co., Ohio
V.M.S. 3480

13+76.50 - P.I. - R.R. Spike Set -
S.W. Corner 4.33 Ac.
Tract (O.R. Vol. 156, pg 481)
0°-51'-40" Rt.

10+27.24 - P.T. - R.R. Spike
Set

8+17.54 - P.I. - 5/8" dia. capped
rebar set
11°-55'-35" Lt.

4+06.31 - P.C. - R.R. Spike set

5+00 - P.O.T. - Mag Nail Set

1+81.91 - P.O.T. - Mag Nail Set

0+30.75 - P.O.T. - R.R. Spike set -
on P/W line of S.R. 287

0+00 - R.R. Spike Set -
Intersection E of T.R. 151 w/
E of S.R. 287

C. Nichols
C. Dill
B. Simmons

August 2001

52

P.I.
13+76.50
R.R. Spike set
0°-51'-40" Rt.
No Curve.

P.T.
10+27.24
R.R. Spike set
Mag Nail Set
on forward
tangent.

+76.50 P

Curve Data
 $\Delta = 11^\circ 55' 35''$ Lt
 $R = 2022.20'$
 $T = 211.23'$
 $L = 420.93'$
 $D_g = 2^\circ 56' 00''$
 $PC = 4+06.31$
 $PI = 8+17.54$
 $PT = 10+27.24$

P.I.
8+17.54
5/8" dia. capped rebar set
11°-55'-35" Lt.

Mag Nail Set
on Back Tangent

P.C.
4+06.31
R.R. Spike set

52.97 Ac.

P.O.T.
5+00
R.R. Spike set

P.O.T.
1+81.91
Mag Nail Set

P.O.T.
0+30.75
R.R. Spike set

P.I.
0+00 T.R. 151
4+1+23.37 S.R. 287
R.R. Spike set

INDEXED ON MAP

948

