

Copy
YOUNG DESCRIPTION
(Nov., 1963)

Being situated in Jefferson Township, Logan County, Ohio;
and being a part of V.M.S. #3137 in the Village of Zanes field.

Beginning at the intersection of the north right of way
line of County Road #10 (Bristle Ridge Pike) and the west line
of the Baldwin Mill Road.

Thence with the north line of County Road #10 N63°-48' W
15.5 feet to a angle in the road.

Thence continuing with the north line of County Road #10
N88°-48' W 311.2 feet to a iron in the east line of Eleyet's
0.27 acre tract.

Thence with Eleyet's east line N12°-02' E132.8 feet to a
iron.

Thence S77°-32'E 22.8 feet to a iron.

Thence N16°-07'E 28.4 feet to a iron.

Thence N39°-45'E 37.6 feet to a corner post.

Thence S73°-21'E 210.5 feet to the center of the Pennock
ditch.

Thence with the center of the Pennock ditch N 1°-45' W
124.0 feet.

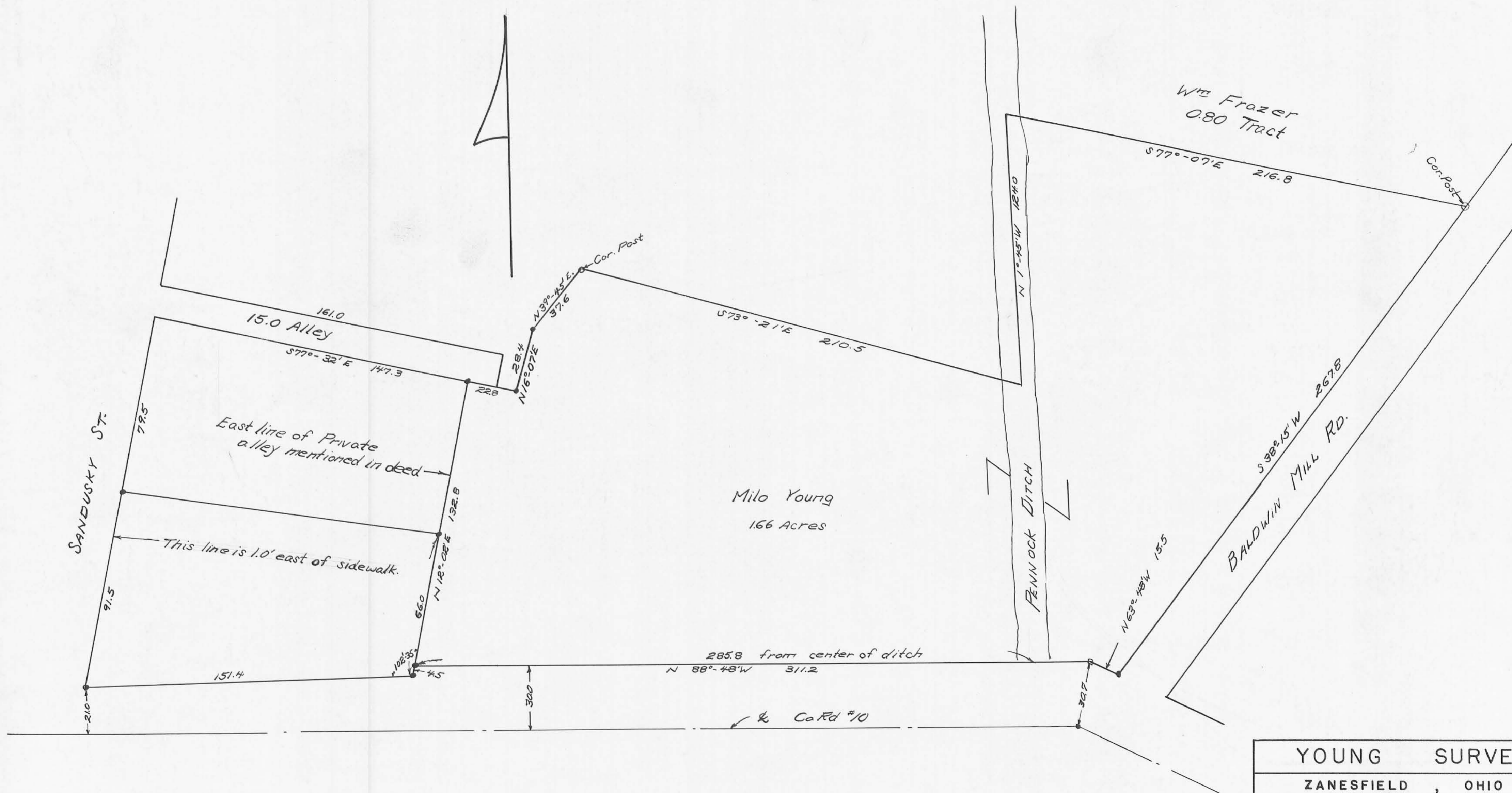
Thence S77°-07'E 216.8 feet to a Corner Post in the
Baldwin Mill Road west line.

Thence with the west line of the Baldwin Mill Road S38°-15'
W 267.8 feet to the place of beginning.

Containing 1.66 acres more or less.

Owen K. Shirk
Surveyor #4271

INDEXED ON MAP
3607 1D



Milo Young
166 Acres

W^{1/2} Frazer
0.80 Tract

SANDUSKY ST.

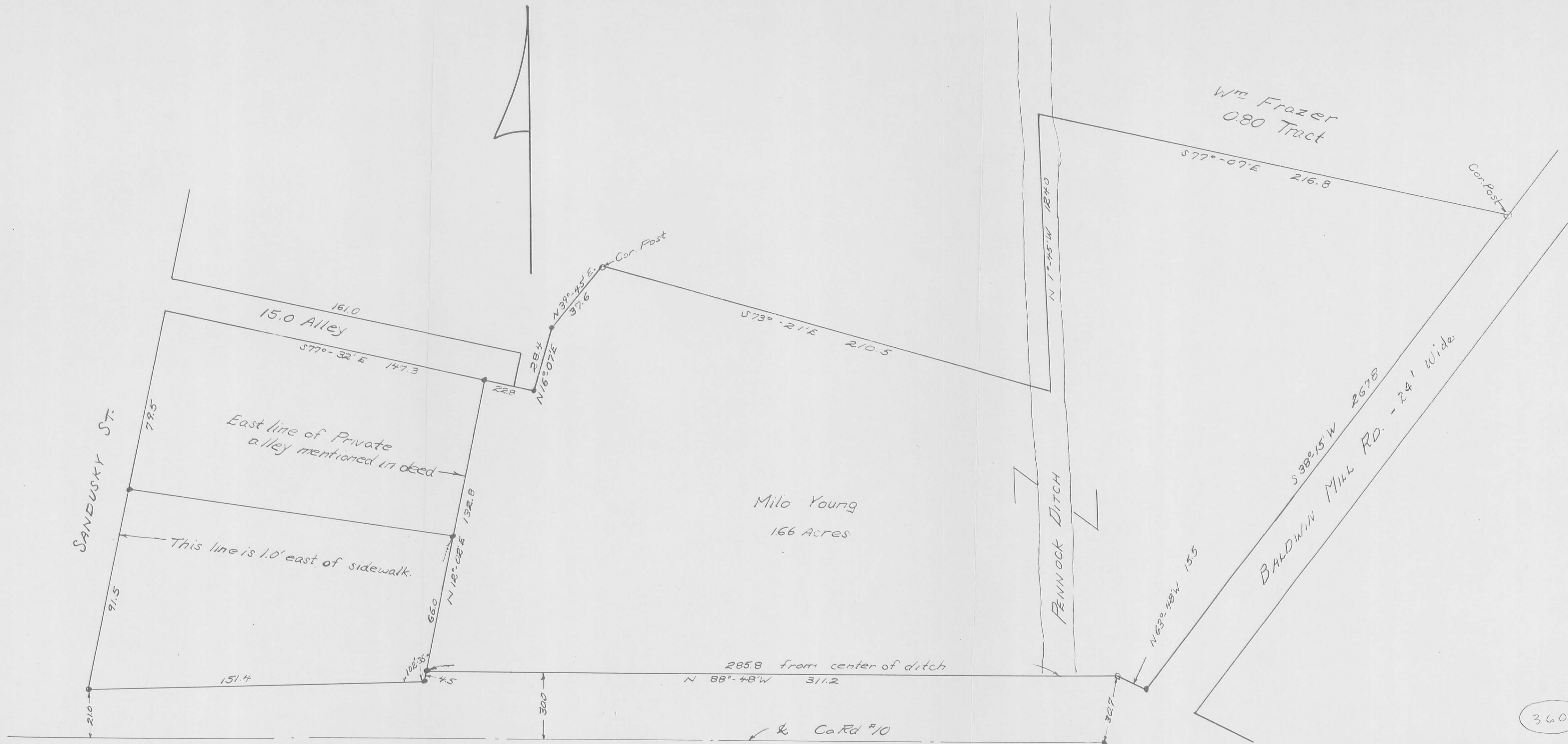
15.0 Alley

PENNOCK DITCH

BALDWIN MILL RD.

YOUNG SURVEY	
ZANESFIELD , OHIO	
LOGAN COUNTY	
V.M.S. 3137	1" = 30'
OWEN K. SHIRK ; SURVEYOR 4271	

Surveyed : Nov, 1963



3607 IP

INDEXED ON MAP

YOUNG SURVEY	
ZANESFIELD , OHIO	
LOGAN COUNTY	
V.M.S. 3137	1" = 30'
OWEN K. SHIRK ; SURVEYOR 4271	

Surveyed: Nov, 1963