

Lee Surveying and Mapping Co., Inc.

Land Surveys • Topography • Subdivisions • Construction Layout

117 N. Madriver St.
Bellefontaine OH 43311



Phone: (937) 593-7335
Fax: (937) 593-7444

EXHIBIT A-1 16 FEET WIDE SUGAR ALLEY VACATION

Lying in the Village of Zanesfield, Virginia Military Survey 3137, Jefferson Township, Logan County, Ohio.

Being for the purpose of vacating the portion of Sugar Alley (16 feet wide), formerly known as Cherry Alley on the Zanesfield Original Plat (Plat Cabinet A, Slide 199), lying east of Cherry Alley (16 feet wide) and between Lot 3 and Lot 4 of the said original plat. See the attached Exhibit A.

Parcel # 14-109-09-03-016 (LOT 4)
14-109-09-03-013 (LOT 3)

Description prepared by:

William K. Bruce
Professional Surveyor 7437
August 29, 2000

L-3016

DESCRIPTION CHECKED
LOGAN CO. ENGINEER

BY SKY 8-31-00

INDEXED ON MAP
9332 1D

Lee Surveying and Mapping Co., Inc.

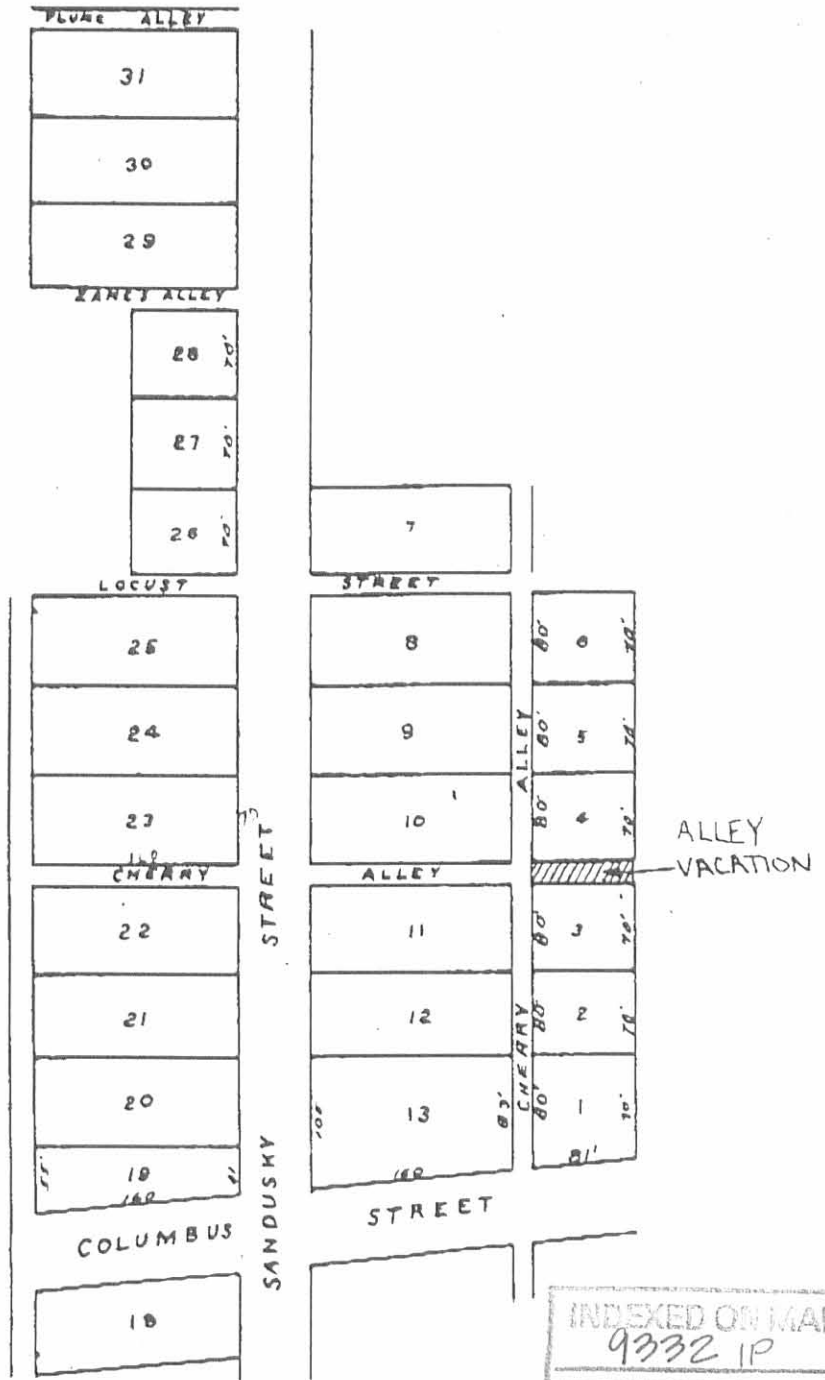
Land Surveys • Topography • Subdivisions • Construction Layout

117 N. Madriver St.
Bellefontaine OH 43311



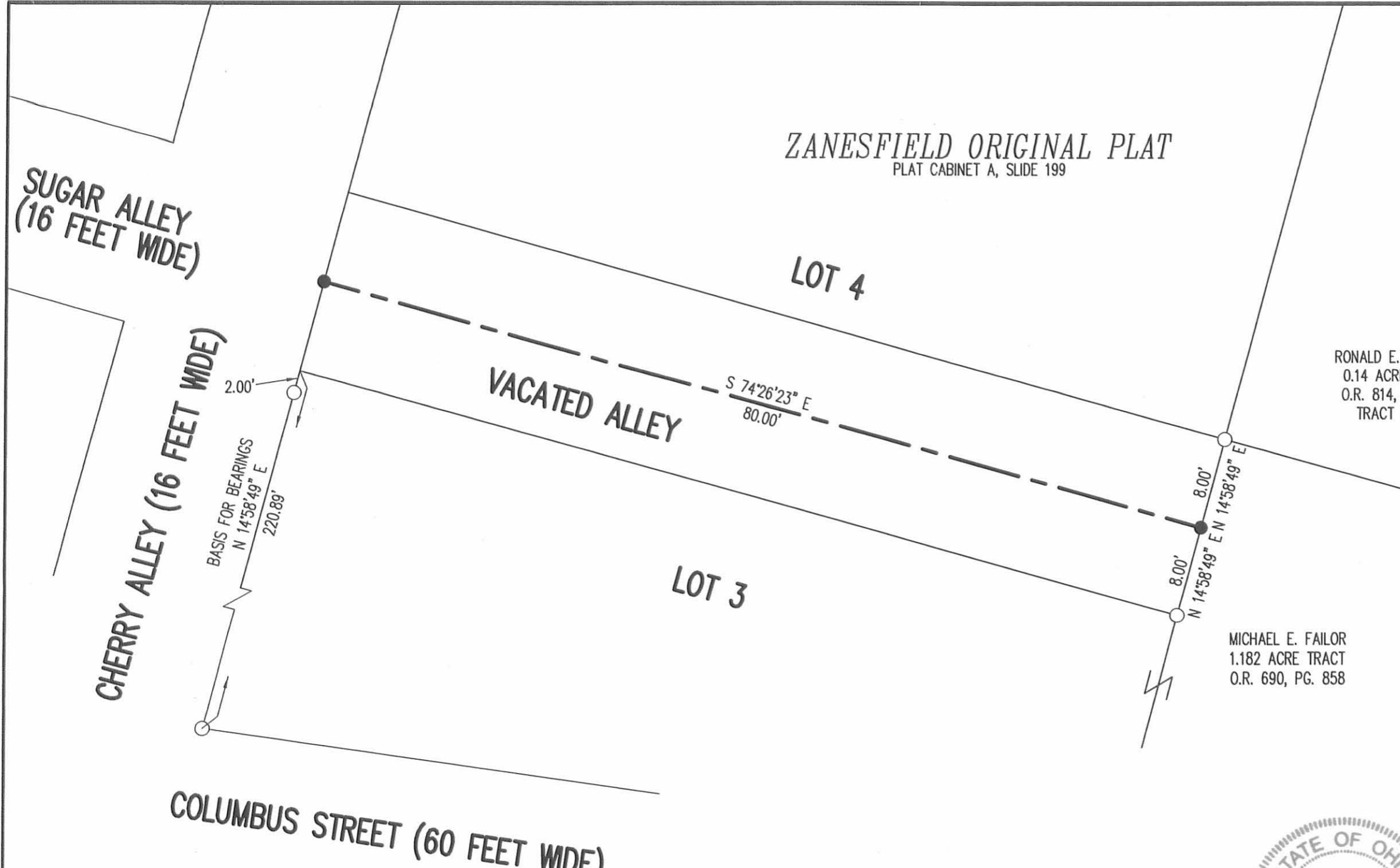
Phone: (937) 593-7335
Fax: (937) 593-7444

EXHIBIT A-2 ZANESFIELD ORIGINAL PLAT

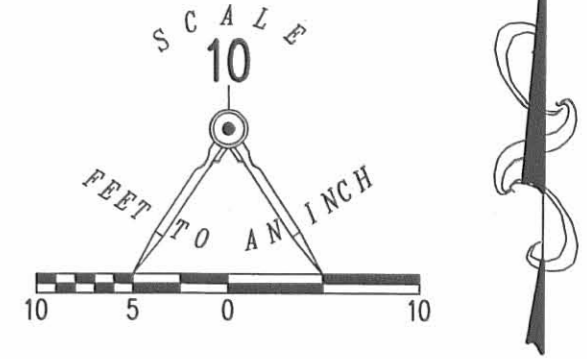


INDEXED ON MAP
9332 1P

REC'D 10-11-11 SMY/OL



ZANESFIELD ORIGINAL PLAT
PLAT CABINET A, SLIDE 199



LEGEND

- 5/8 INCH IRON ROD SET WITH PLASTIC I.D. CAP STAMPED "LSM 7437"
- 5/8 INCH IRON ROD FOUND

RONALD E. JACKSON
0.14 ACRE TRACT
O.R. 814, PG. 292
TRACT THREE

MICHAEL E. FAILOR
1.182 ACRE TRACT
O.R. 690, PG. 858

SURVEY OF THE
CENTER-LINE OF VACATED
SUGAR ALLEY
ZANESFIELD ORIGINAL PLAT
PLAT CABINET A, SLIDE 199
VILLAGE OF ZANESFIELD
VIRGINIA MILITARY SURVEY 3137
JEFFERSON TOWNSHIP
LOGAN COUNTY, OHIO

SURVEYED BY:



William K. Bruce
WILLIAM K. BRUCE
PROFESSIONAL SURVEYOR 7437
OCTOBER 7, 2011

COPYRIGHT 2011 BY:
LEE SURVEYING & MAPPING CO., INC.
117 North Madriver Street
BELLEFONTAINE, OHIO 43311
(937) 593-7335
WWW.LSMINC.US
surveys@lsminc.us

ADW D1011 12011011 L-1201-3

2 WORKING DAYS
BEFORE YOU DIG
CALL TOLL FREE 800-362-2764
OHIO UTILITIES PROTECTION SERVICE.

INDEXED ON MAP
9332 AP