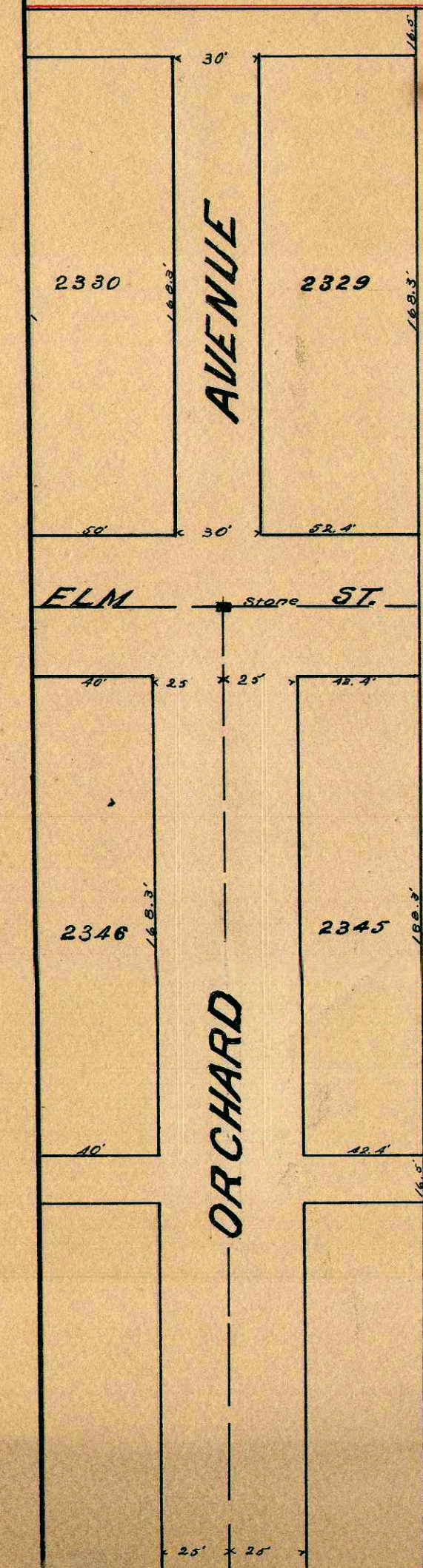


Property Line



Crocker and McCulloch Lands.

John Hantz to B. & I. March 17 1851.  
 Book 46 - P. 25 Release. Cons. \$100.  
 Part of E. 1/4 - N. W. 1/4 - Sec. 35 T. 4. - R. 14. } Original A. of Way.

R. P. Kennedy W. D. to B. & I. Oct 12. 1887.  
 Book 84 - P. 513 Cons. \$2800. Right of Way.

S. H. McCulloch et al. W. D. to C. C. C. & S. L. Ry  
 Book 78 - P. 25 - Sept. 1, 1891, Cons. \$255.25. Extra Ground.

N. 3°30' E.