

1. D. B. ...
 2. J. ...
 3. ...
 4. ...
 5. ...
 6. ...
 7. ...
 8. ...

LOGAN COUNTY
 PERRY TOWNSHIP

UNION COUNTY
 LIBERTY TOWNSHIP

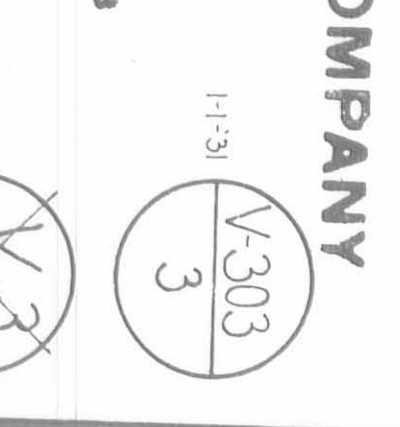
ST. MARYS BRANCH -- MAIN LINE
 FROM STATION 201+29.5 TO STATION 305+1.0

SCALE 1 INCH = 200 FEET

OFFICE OF VALUATION ENGINEER, COLUMBUS, OHIO

RIGHT OF WAY AND TRACK MAP
 THE TOLEDO AND OHIO CENTRAL RAILWAY
 OPERATED BY
 THE TOLEDO AND OHIO CENTRAL RAILWAY COMPANY

JUNE 30, 1918



3036
 10
 1
 2
 3
 4
 5

SCHEMATIC OF PROJECT
 DATE
 RECORD
 CHECKED
 REMARKS

LOGAN COUNTY
 PERRY TOWNSHIP
 JEFFERSON TOWNSHIP

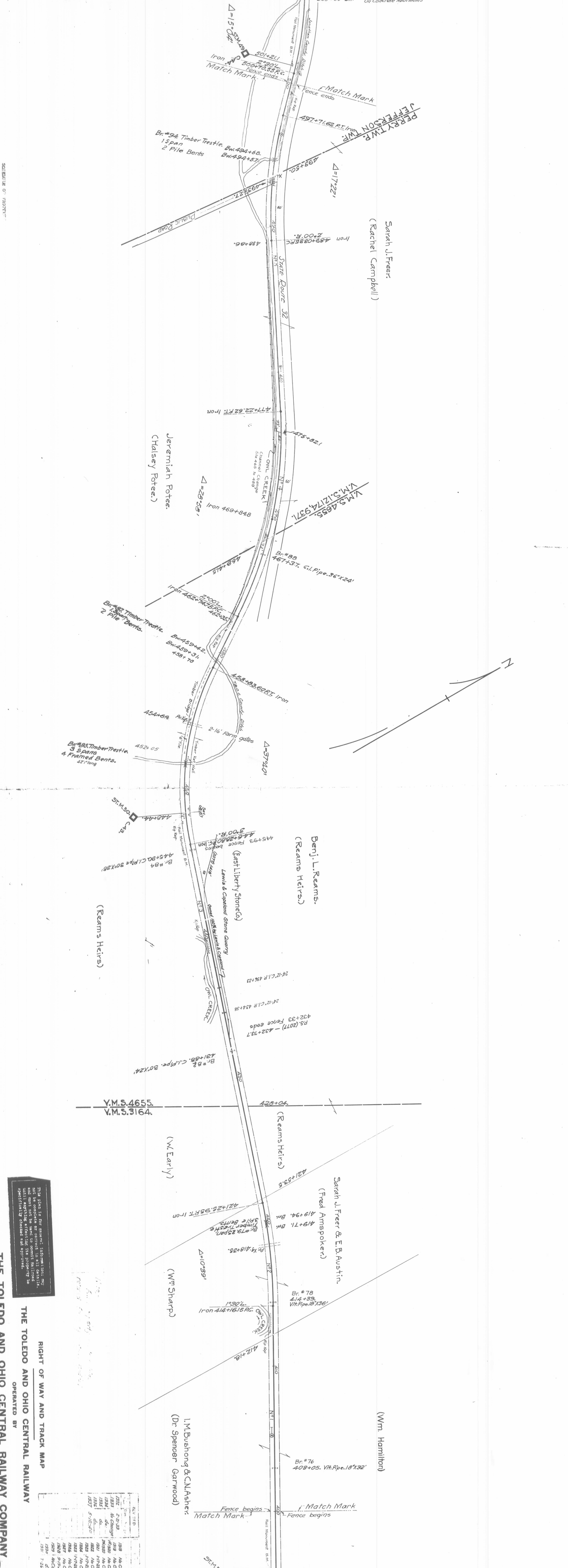
ST. MARYS BRANCH -- MAIN LINE
 FROM STATION 400+00 TO STATION 500+00
 SCALE 1 INCH = 200 FEET
 JUNE 30, 1918

RIGHT OF WAY AND TRACK MAP
 THE TOLEDO AND OHIO CENTRAL RAILWAY
 OPERATED BY
 THE TOLEDO AND OHIO CENTRAL RAILWAY COMPANY

ST. MARYS BRANCH -- MAIN LINE
 FROM STATION 400+00 TO STATION 500+00
 SCALE 1 INCH = 200 FEET
 JUNE 30, 1918

OFFICE OF VALUATION ENGINEER, CALUMBA, OHIO.
 OPERATED BY THE NEW YORK CENTRAL RAILROAD
 COMPANY SUBSEQUENT TO DECEMBER 31, 1921

R-36
 V-303
 5



This plan is for record; information not to be complete or correct, and not to be used for anything but the purpose for which it was prepared. The engineer assumes no responsibility for any errors or omissions.

KEY	DESCRIPTION
1918	No Change
1919	No Change
1920	No Change
1921	No Change
1922	No Change
1923	No Change
1924	No Change
1925	No Change
1926	No Change
1927	No Change
1928	No Change
1929	No Change
1930	No Change

303-9
 10 Joseph Shoofs
 T & O C Ry Co
 No. 1 - Conveyed to J & I N Ry Co. by J. T. Adams by G. D. Deed, Feb 18, 1899
 Recorded Vol. 95, Page 1301, Dist. No. 1317

STATE OF OHIO

OFFICE OF THE COMMISSIONER OF LANDS

RECORDS

Map 7

Map 5

STATE OF OHIO

OFFICE OF THE COMMISSIONER OF LANDS

RECORDS

Map 7

Map 5

STATE OF OHIO

OFFICE OF THE COMMISSIONER OF LANDS

RECORDS

Map 7

Map 5

STATE OF OHIO

OFFICE OF THE COMMISSIONER OF LANDS

RECORDS

Map 7

Map 5

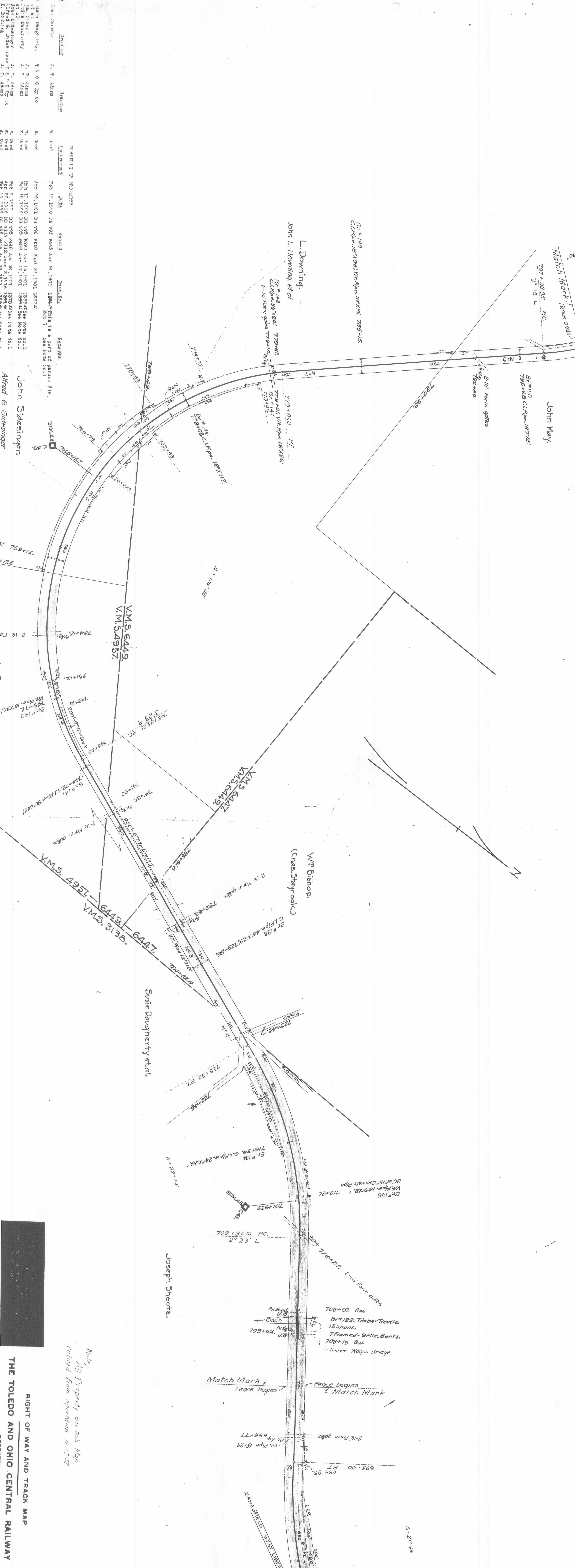
STATE OF OHIO

OFFICE OF THE COMMISSIONER OF LANDS

RECORDS

Map 7

Map 5



RIGHT OF WAY AND TRACK MAP
 THE TOLEDO AND OHIO CENTRAL RAILWAY
 OPERATED BY
 THE TOLEDO AND OHIO CENTRAL RAILWAY COMPANY

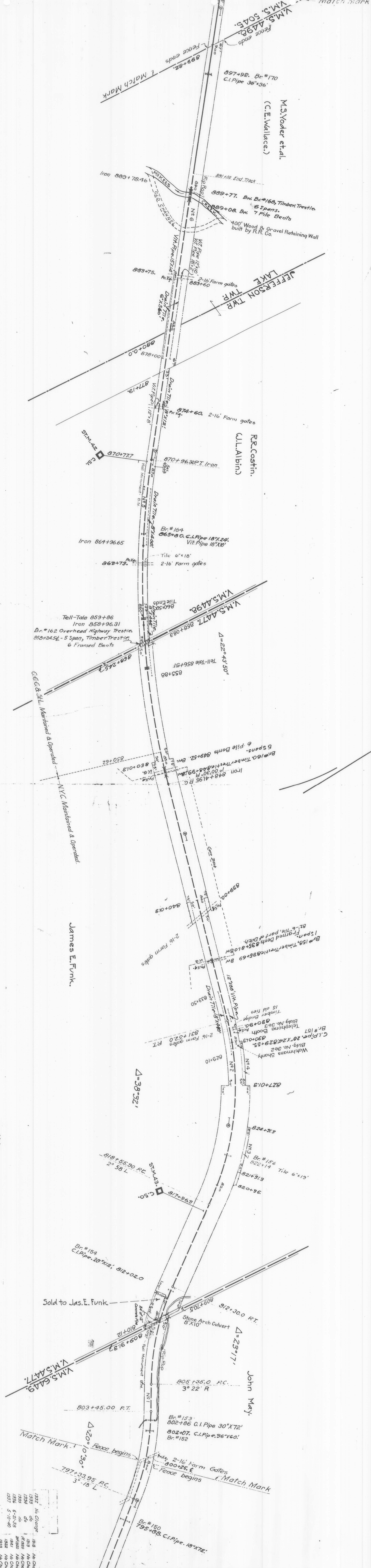
ST. MARYS BRANCH -- MAIN LINE
 FROM STATION 700+00 TO STATION 800+00
 SCALE 1 INCH = 200 FEET
 OFFICE OF VALUATION ENGINEERS, COLUMBUS, OHIO.
 JUNE 30, 1918

REVISIONS

1912	1/2	Change
1913	1/2	Change
1914	1/2	Change
1915	1/2	Change
1916	1/2	Change
1917	1/2	Change
1918	1/2	Change

Notes:
 All Property on this Map
 relied from operation 12-15-37

SUMMIT
OHIO.



303.10

No.	Inspector	Station	Date	Remarks
1	J. W. May	800+00	Apr 2, 1899	DB 795 1431 Apr 22, 1901 3426.58m Note No. 1, Mile 1.8 part of parcel 47, Map 6
2	J. W. May	800+00	Apr 11, 1899	DB 795 1431 Apr 17, 1901 3426.58m Note No. 1
3	J. W. May	800+00	Apr 18, 1902	DB 795 1431 Apr 17, 1901 3426.58m Note No. 1
4	J. W. May	800+00	Apr 27, 1901	DB 795 1431 Apr 17, 1901 3426.58m Note No. 1
5	J. W. May	800+00	Apr 27, 1901	DB 795 1431 Apr 17, 1901 3426.58m Note No. 1
6	J. W. May	800+00	Apr 27, 1901	DB 795 1431 Apr 17, 1901 3426.58m Note No. 1
7	J. W. May	800+00	Apr 27, 1901	DB 795 1431 Apr 17, 1901 3426.58m Note No. 1
8	J. W. May	800+00	Apr 27, 1901	DB 795 1431 Apr 17, 1901 3426.58m Note No. 1
9	J. W. May	800+00	Apr 27, 1901	DB 795 1431 Apr 17, 1901 3426.58m Note No. 1
10	J. W. May	800+00	Apr 27, 1901	DB 795 1431 Apr 17, 1901 3426.58m Note No. 1

RIGHT OF WAY AND TRACK MAP
 THE TOLEDO AND OHIO CENTRAL RAILWAY
 OPERATED BY
 THE TOLEDO AND OHIO CENTRAL RAILWAY COMPANY

ST. MARYS BRANCH -- MAIN LINE
 FROM STATION 800+00 TO STATION 899+82.
 SCALE 1 INCH = 200 FEET
 JUNE 30, 1918

LOGAN COUNTY
 JEFFERSON TOWNSHIP
 LAKE TOWNSHIP

James E. Funk.

Note: All Property on this Map East of Sta. 881+00 retired from operation 12-15-37

Match Mark

Match Mark

303.10

NO. 1 - Corrected to D. S. T. R. Co. by J. W. May, Apr. 27, 1901, Note No. 1

NO. 2 - Corrected to D. S. T. R. Co. by J. W. May, Apr. 27, 1901, Note No. 1

NO. 3 - Corrected to D. S. T. R. Co. by J. W. May, Apr. 27, 1901, Note No. 1

NO. 4 - Corrected to D. S. T. R. Co. by J. W. May, Apr. 27, 1901, Note No. 1

NO. 5 - Corrected to D. S. T. R. Co. by J. W. May, Apr. 27, 1901, Note No. 1

NO. 6 - Corrected to D. S. T. R. Co. by J. W. May, Apr. 27, 1901, Note No. 1

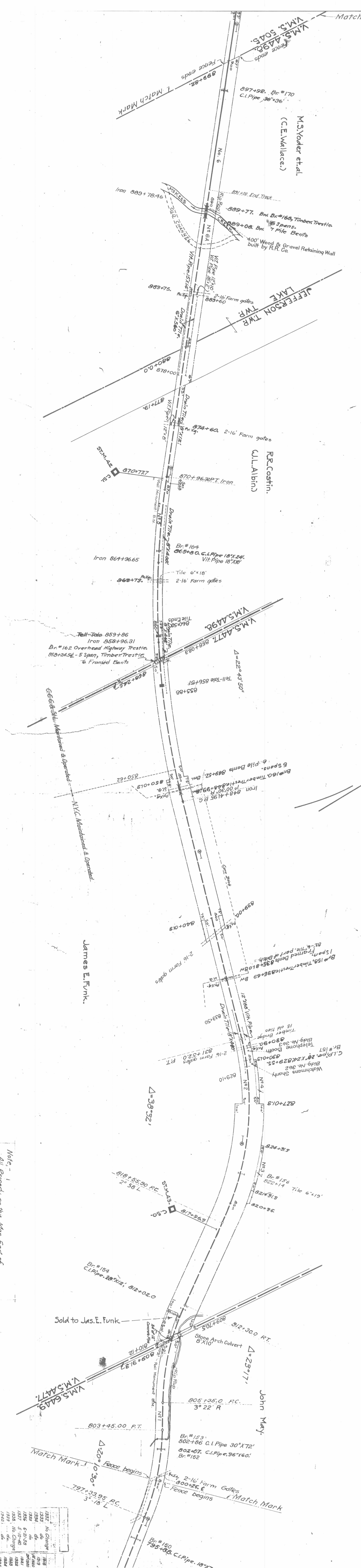
NO. 7 - Corrected to D. S. T. R. Co. by J. W. May, Apr. 27, 1901, Note No. 1

NO. 8 - Corrected to D. S. T. R. Co. by J. W. May, Apr. 27, 1901, Note No. 1

NO. 9 - Corrected to D. S. T. R. Co. by J. W. May, Apr. 27, 1901, Note No. 1

NO. 10 - Corrected to D. S. T. R. Co. by J. W. May, Apr. 27, 1901, Note No. 1

SUMMIT
OHIO.



Note: -
All Property on this Map East of
Sta. 891+00 relieved from operation 12-15-37

RIGHT OF WAY AND TRACK MAP
THE TOLEDO AND OHIO CENTRAL RAILWAY
OPERATED BY
THE TOLEDO AND OHIO CENTRAL RAILWAY COMPANY

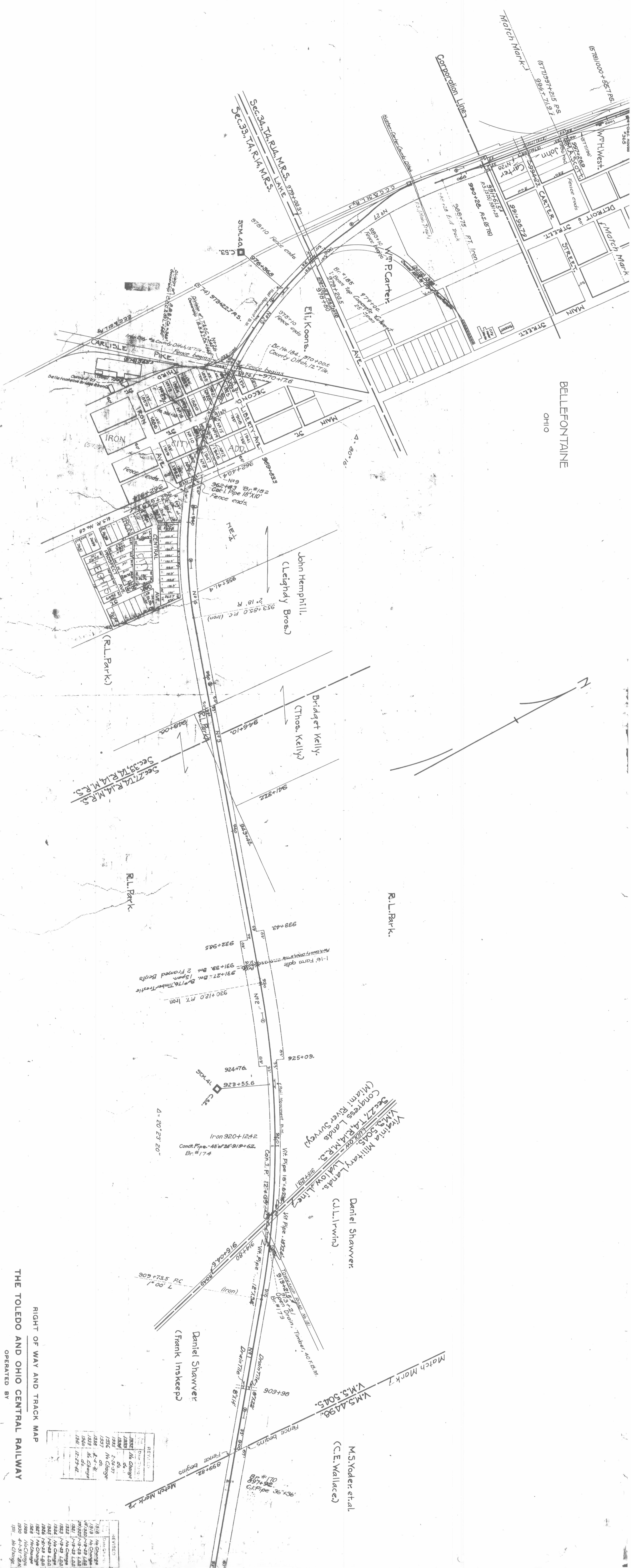
1327	No Change	1818	No Change
1328	do	1819	No Change
1329	do	1820	No Change
1330	do	1821	No Change
1331	do	1822	No Change
1332	do	1823	No Change
1333	do	1824	No Change
1334	do	1825	No Change
1335	do	1826	No Change
1336	do	1827	No Change
1337	do	1828	No Change
1338	do	1829	No Change
1339	do	1830	No Change
1340	do	1831	No Change
1341	do	1832	No Change
1342	do	1833	No Change
1343	do	1834	No Change
1344	do	1835	No Change
1345	do	1836	No Change
1346	do	1837	No Change
1347	do	1838	No Change
1348	do	1839	No Change
1349	do	1840	No Change

LOGAN COUNTY
JEFFERSON TOWNSHIP
LAKE TOWNSHIP

SHEET NO. 10 OF 24 OF THE TOLEDO AND OHIO CENTRAL RAILWAY
FROM STATION 800+00 TO STATION 899+82
VALUATION ENGINEER

ST. MARY'S BRANCH -- MAIN LINE
FROM STATION 800+00 TO STATION 899+82
SCALE 1 INCH = 200 FEET
OFFICE OF VALUATION ENGINEER, COLUMBUS, OHIO
JUNE 30, 1918

V-303
9
R-36



BELLEFONTAINE
OHIO

LOGAN COUNTY
LAKE TOWNSHIP

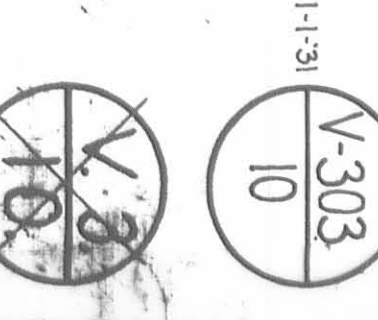
RIGHT OF WAY AND TRACK MAP
THE TOLEDO AND OHIO CENTRAL RAILWAY
OPERATED BY
THE TOLEDO AND OHIO CENTRAL RAILWAY COMPANY

ST. MARY'S BRANCH -- MAIN LINE
FROM STATION 899+02. TO STATION 996+71.9
SCALE 1 INCH = 200 FEET
JUNE 30, 1918

REVISION	DATE	BY	DESCRIPTION
1	1918	J. C. ...	Original
2	1918	J. C. ...	No Change
3	1918	J. C. ...	No Change
4	1918	J. C. ...	No Change
5	1918	J. C. ...	No Change
6	1918	J. C. ...	No Change
7	1918	J. C. ...	No Change
8	1918	J. C. ...	No Change
9	1918	J. C. ...	No Change
10	1918	J. C. ...	No Change
11	1918	J. C. ...	No Change
12	1918	J. C. ...	No Change
13	1918	J. C. ...	No Change
14	1918	J. C. ...	No Change
15	1918	J. C. ...	No Change
16	1918	J. C. ...	No Change
17	1918	J. C. ...	No Change
18	1918	J. C. ...	No Change
19	1918	J. C. ...	No Change
20	1918	J. C. ...	No Change

SHEET NO. 11 OF 34 OF THE TOLEDO AND OHIO CENTRAL RAILWAY
FROM SURVEY STATION 899+02 TO SURVEY STATION 996+71.9
J. C. ...
VALUATION ENGINEER

OPERATED BY THE NEW YORK CENTRAL & PAU RY
COMPANY SUBSIDIARY TO DECEMBER 31, 1918
OFFICE OF VALUATION ENGINEER, COLUMBUS, OHIO
R-36



Match Mark



LOGAN COUNTY
LAKE TOWNSHIP

RIGHT OF WAY AND TRACK MAP
 THE TOLEDO AND OHIO CENTRAL RAILWAY
 OPERATED BY
 THE TOLEDO AND OHIO CENTRAL RAILWAY COMPANY

ST. MARYS BRANCH -- MAIN LINE
 FROM STATION 994+71.9 TO STATION 1050+00
 SCALE 1 INCH = 100 FEET
 OFFICE OF ENGINEERING AND CONSTRUCTION
 THE TOLEDO AND OHIO CENTRAL RAILWAY COMPANY
 CLEVELAND, OHIO
 1-1-31

NO.	DATE	REVISIONS
1232	1/16/20	No Change
1233	1/16/20	do
1234	1/16/20	do
1235	1/16/20	do
1236	1/16/20	do
1237	1/16/20	No Change
1238	1/16/20	do
1239	1/16/20	do
1240	1/16/20	No Change
1241	1/16/20	No Change

REVISIONS
 1232 No Change
 1233 do
 1234 do
 1235 do
 1236 do
 1237 No Change
 1238 do
 1239 do
 1240 No Change
 1241 No Change

R-36

Br. #209
1103+51 C.I. Pipe 12"x30"

Hannah Robinson.

Elizabeth Pash.
(Sallie Pash.)

Edward Houz.

BELLEFONTAINE
OHIO

Match Mark 7 1099+49
Fence ends
Pr. # 1099+30. 1-16 Farm gate
Match Mark
Fence ends
Pr. # 1099+30. 1-16 Farm gate

1090+75
Pr. # 1090+75
1-16 Farm gate
1080+89
1080+78 Br. No. 206
32" of 12" Cor. I. Pipe

1081+92.6
Fall Monument B.M.
C.S.S.
1082+00.28
F.T.C. Iron
1079+76.22 R.C.C. Iron
O. 4.0' 10" L.

Br. #205
1079+58 Vit. Pipe 18"x48"
Vit. Pipe 12"x4"

Corporation Line 1074+46.7

1073+76.22 R.C.C. Iron 1.3' L. of E
1071' L.

Michael Cartmell
Δ=3°21'

1069+35.7
Fence begins

0° 34' L.
Iron 1067+26.14 R.C.C.

1066+12.1
Pr. # 1066+12.1
1065+09
Fence ends
Cement Block Co.

1062 L.
Iron 1061+75.8 R.C.C.

Br. #201
1060+52
Open Drain, timber
350 F.B.M.
1059+89 Fence begins
1058+15 (325)

HARRISON TOWNSHIP
TROY ST.
Sec. 5, 13, 14, R. 14, M. 13.
LAKE TOWNSHIP
Sec. 35, 14, R. 14, M. 13.

Year	Change
1922	No Change
1923	do
1924	do
1925	do
1926	do
1927	do
1928	do
1929	do
1930	do
1931	do
1932	do

RIGHT OF WAY AND TRACK MAP
THE TOLEDO AND OHIO CENTRAL RAILWAY
OPERATED BY
THE TOLEDO AND OHIO CENTRAL RAILWAY COMPANY

ST. MARYS BRANCH -- MAIN LINE
FROM STATION 1050+00 TO STATION 1099+49
JUNE 30, 1918

LOGAN COUNTY
LAKE TOWNSHIP
HARRISON TOWNSHIP

SHEET NO. 13 OF 34 OF THE TOLEDO AND OHIO CENTRAL RAILWAY
ST. MARYS BRANCH MAIN LINE
FROM STATION 1050+00 TO STATION 1099+49

VALUATION ENGINEER

SCALE 1 INCH = 100 FEET
OFFICE OF VALUATION ENGINEER, COLUMBUS, OHIO.

11-3
V-303
12

R-36
12

OPERATED BY THE NEW YORK CENTRAL RAILROAD COMPANY SUBSEQUENT TO DECEMBER 31, 1917.
JUNE 30, 1918