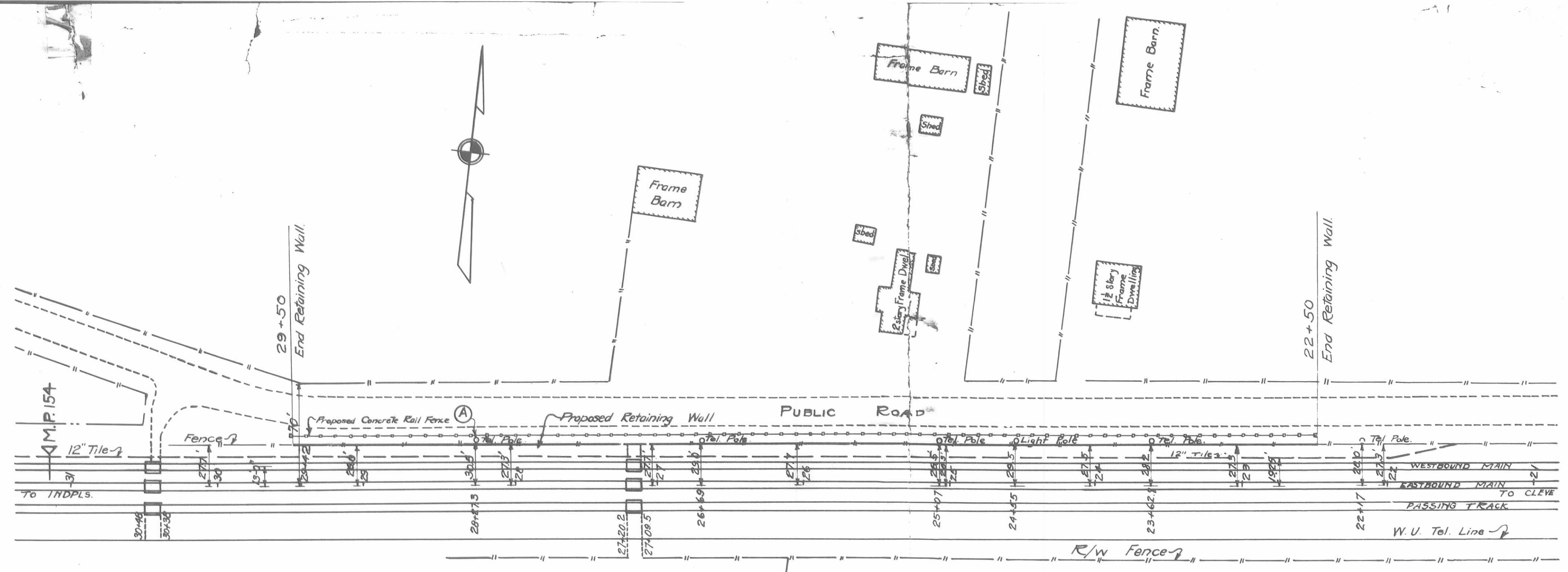
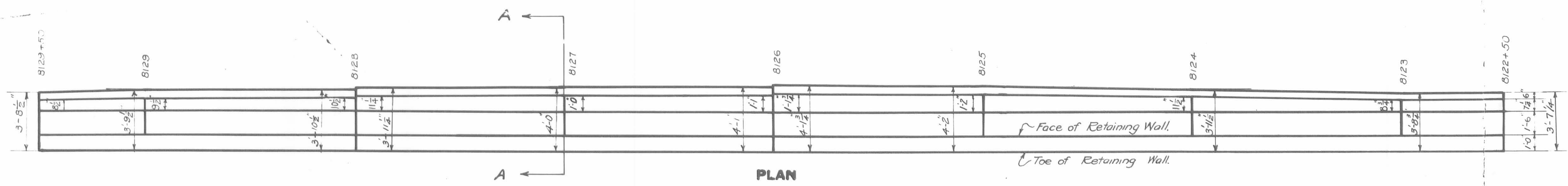


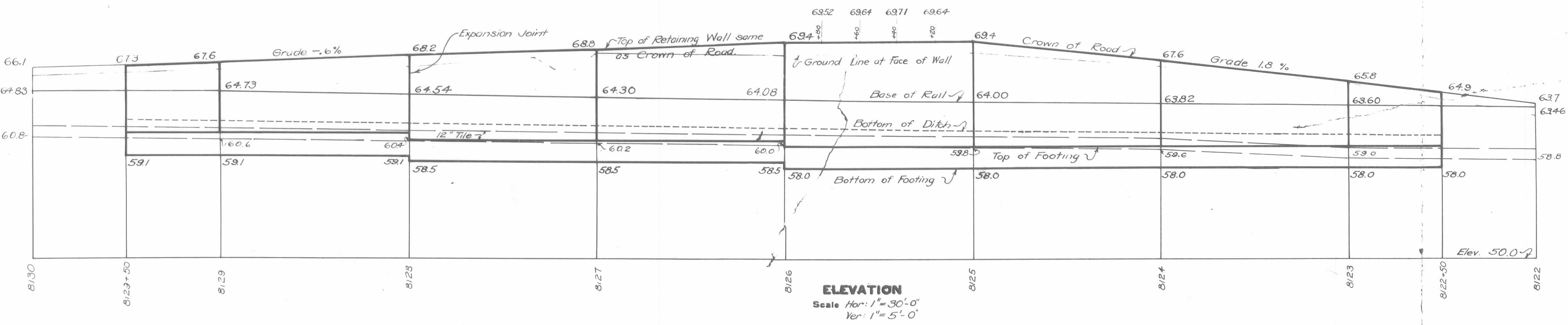
**SECTION "A-A"**  
Scale 1/4" = 1'-0"



**SITUATION PLAN**  
Scale 1" = 50'-0"



**PLAN**



**ELEVATION**  
Scale Hor: 1" = 30'-0"  
Ver: 1" = 5'-0"

LIST OF OTHER PLANS		
DESCRIPTION	PLAN	FILE
Cross Sec for Prop Retaining Wall at Morgan Ave	Res Engr	11-12-25
Situation Plan	"	"
Details of Concrete Post & Rail	22515	917-36

CONCRETE SPECIFICATIONS	
Designed Strength	2500*
Slump	3"
Sand	0-
Crushed Stone or boulders	7/8
FM of Mixed Aggregates	3.0
True Mix	1-4.8

APPROX. QUANTITIES	
Concrete Class 25 Footing	205 Cu. Yds.
" " " " Network	390 " "
350 Burs 3/8" x 4'-0"	1460 Pounds

**THE CLEVELAND, CINCINNATI, CHICAGO & ST. LOUIS RY. CO.**  
VAL. SEC. 41 SHEET NO. 37  
INDIANAPOLIS DIVISION  
**RETAINING WALL ALONG WESTWARD TRACK  
WEST OF MORGAN OHIO R-41**  
GENERAL PLAN

CORRECT \_\_\_\_\_  
APPROVED \_\_\_\_\_  
CHIEF ENGINEER

REVISIONS		
DATE	BY	DESCRIPTION

Scales as shown  
Sheet 1 of 1  
Office of Chief Engineer  
Cincinnati, Ohio, Jan. 11, 1926  
DRAWN BY W. L. ANDERSON,  
TRACED BY W. L. ANDERSON,  
CHECKED BY \_\_\_\_\_  
PLAN NO. 24826  
FILE NO. 1110-26