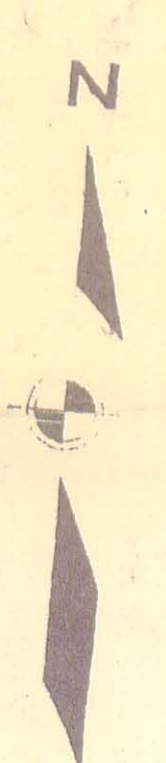


Item	A.F.E.	Quantity	Unit	Amount
Plan of Ry. water thru water station	CE 2391	2391	1	1916
Drilling 12" well hole from A. & C. I. P.	CE 2392	2392	1	1916
Open ditch 100' x 10' x 10'	CE 2393	2393	1	1916
Open ditch 100' x 10' x 10'	CE 2394	2394	1	1916
Open ditch 100' x 10' x 10'	CE 2395	2395	1	1916
Open ditch 100' x 10' x 10'	CE 2396	2396	1	1916
Open ditch 100' x 10' x 10'	CE 2397	2397	1	1916
Open ditch 100' x 10' x 10'	CE 2398	2398	1	1916
Open ditch 100' x 10' x 10'	CE 2399	2399	1	1916
Open ditch 100' x 10' x 10'	CE 2400	2400	1	1916
Open ditch 100' x 10' x 10'	CE 2401	2401	1	1916
Open ditch 100' x 10' x 10'	CE 2402	2402	1	1916
Open ditch 100' x 10' x 10'	CE 2403	2403	1	1916
Open ditch 100' x 10' x 10'	CE 2404	2404	1	1916
Open ditch 100' x 10' x 10'	CE 2405	2405	1	1916
Open ditch 100' x 10' x 10'	CE 2406	2406	1	1916
Open ditch 100' x 10' x 10'	CE 2407	2407	1	1916
Open ditch 100' x 10' x 10'	CE 2408	2408	1	1916
Open ditch 100' x 10' x 10'	CE 2409	2409	1	1916
Open ditch 100' x 10' x 10'	CE 2410	2410	1	1916
Open ditch 100' x 10' x 10'	CE 2411	2411	1	1916
Open ditch 100' x 10' x 10'	CE 2412	2412	1	1916
Open ditch 100' x 10' x 10'	CE 2413	2413	1	1916
Open ditch 100' x 10' x 10'	CE 2414	2414	1	1916
Open ditch 100' x 10' x 10'	CE 2415	2415	1	1916
Open ditch 100' x 10' x 10'	CE 2416	2416	1	1916
Open ditch 100' x 10' x 10'	CE 2417	2417	1	1916
Open ditch 100' x 10' x 10'	CE 2418	2418	1	1916
Open ditch 100' x 10' x 10'	CE 2419	2419	1	1916
Open ditch 100' x 10' x 10'	CE 2420	2420	1	1916
Open ditch 100' x 10' x 10'	CE 2421	2421	1	1916
Open ditch 100' x 10' x 10'	CE 2422	2422	1	1916
Open ditch 100' x 10' x 10'	CE 2423	2423	1	1916
Open ditch 100' x 10' x 10'	CE 2424	2424	1	1916
Open ditch 100' x 10' x 10'	CE 2425	2425	1	1916
Open ditch 100' x 10' x 10'	CE 2426	2426	1	1916
Open ditch 100' x 10' x 10'	CE 2427	2427	1	1916
Open ditch 100' x 10' x 10'	CE 2428	2428	1	1916
Open ditch 100' x 10' x 10'	CE 2429	2429	1	1916
Open ditch 100' x 10' x 10'	CE 2430	2430	1	1916
Open ditch 100' x 10' x 10'	CE 2431	2431	1	1916
Open ditch 100' x 10' x 10'	CE 2432	2432	1	1916
Open ditch 100' x 10' x 10'	CE 2433	2433	1	1916
Open ditch 100' x 10' x 10'	CE 2434	2434	1	1916
Open ditch 100' x 10' x 10'	CE 2435	2435	1	1916
Open ditch 100' x 10' x 10'	CE 2436	2436	1	1916
Open ditch 100' x 10' x 10'	CE 2437	2437	1	1916
Open ditch 100' x 10' x 10'	CE 2438	2438	1	1916
Open ditch 100' x 10' x 10'	CE 2439	2439	1	1916
Open ditch 100' x 10' x 10'	CE 2440	2440	1	1916
Open ditch 100' x 10' x 10'	CE 2441	2441	1	1916
Open ditch 100' x 10' x 10'	CE 2442	2442	1	1916
Open ditch 100' x 10' x 10'	CE 2443	2443	1	1916
Open ditch 100' x 10' x 10'	CE 2444	2444	1	1916
Open ditch 100' x 10' x 10'	CE 2445	2445	1	1916
Open ditch 100' x 10' x 10'	CE 2446	2446	1	1916
Open ditch 100' x 10' x 10'	CE 2447	2447	1	1916
Open ditch 100' x 10' x 10'	CE 2448	2448	1	1916
Open ditch 100' x 10' x 10'	CE 2449	2449	1	1916
Open ditch 100' x 10' x 10'	CE 2450	2450	1	1916



1951 No Change
 1952 " "
 1953 " "
 1954 " "
 1955 4.1-58
 1956 No Change
 1957 2.4-60
 1959 No Change

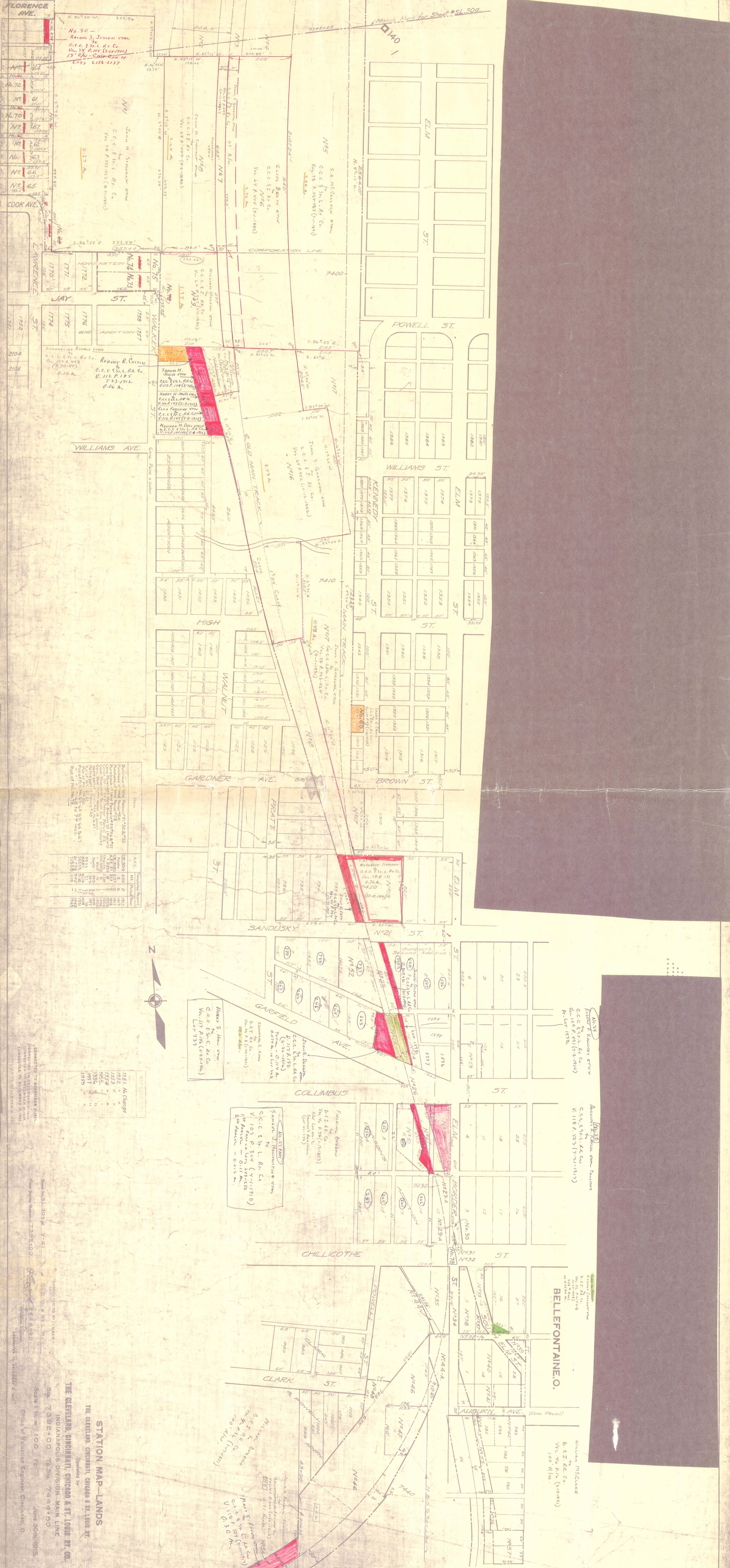
CONNECTED TO DECEMBER 31, 1955
 CONNECTED TO DECEMBER 31, 1955
 CONNECTED TO DECEMBER 31, 1955
 CONNECTED TO DECEMBER 31, 1955

Sheet No. ST.30a of 4
 From Survey Station 7385+20
 S. C. C. & S. L. Ry. Co.
 Station 7385+20
 Station 7438+00

STATION MAP—TRACKS AND STRUCTURES
 THE CLEVELAND, CINCINNATI, CHICAGO & ST. LOUIS RY. CO.
 INDIANAPOLIS DIVISION—MAIN LINE
 THE CLEVELAND, CINCINNATI, CHICAGO & ST. LOUIS RY.
 Operated by

Office of Valuation Engineers, Cincinnati, O.
 June 30th, 1915
 Scale 1 in. = 100 FT.





RECORDS

No.	Year	Volume	Page
No. 50	1917	157	157
No. 51	1917	157	157
No. 52	1917	157	157
No. 53	1917	157	157
No. 54	1917	157	157
No. 55	1917	157	157
No. 56	1917	157	157
No. 57	1917	157	157
No. 58	1917	157	157
No. 59	1917	157	157
No. 60	1917	157	157
No. 61	1917	157	157
No. 62	1917	157	157
No. 63	1917	157	157
No. 64	1917	157	157
No. 65	1917	157	157
No. 66	1917	157	157
No. 67	1917	157	157
No. 68	1917	157	157
No. 69	1917	157	157
No. 70	1917	157	157
No. 71	1917	157	157
No. 72	1917	157	157
No. 73	1917	157	157
No. 74	1917	157	157
No. 75	1917	157	157
No. 76	1917	157	157
No. 77	1917	157	157
No. 78	1917	157	157
No. 79	1917	157	157
No. 80	1917	157	157
No. 81	1917	157	157
No. 82	1917	157	157
No. 83	1917	157	157
No. 84	1917	157	157
No. 85	1917	157	157
No. 86	1917	157	157
No. 87	1917	157	157
No. 88	1917	157	157
No. 89	1917	157	157
No. 90	1917	157	157
No. 91	1917	157	157
No. 92	1917	157	157
No. 93	1917	157	157
No. 94	1917	157	157
No. 95	1917	157	157
No. 96	1917	157	157
No. 97	1917	157	157
No. 98	1917	157	157
No. 99	1917	157	157
No. 100	1917	157	157

STATION MAP-LANDS
 THE CLEVELAND, CINCINNATI, CHICAGO & ST. LOUIS R.R. CO.
 INDIANAPOLIS DIVISION MAIN LINE
 Prepared by
 THE CLEVELAND, CINCINNATI, CHICAGO & ST. LOUIS R.R. CO.
 Scale 1 in. = 100 Ft.
 Date 1917
 Office of Valuation Engineers, Cincinnati, O.





CROSSING
NO. 14107.1IN

CROSSING
NO. 14244.1IN

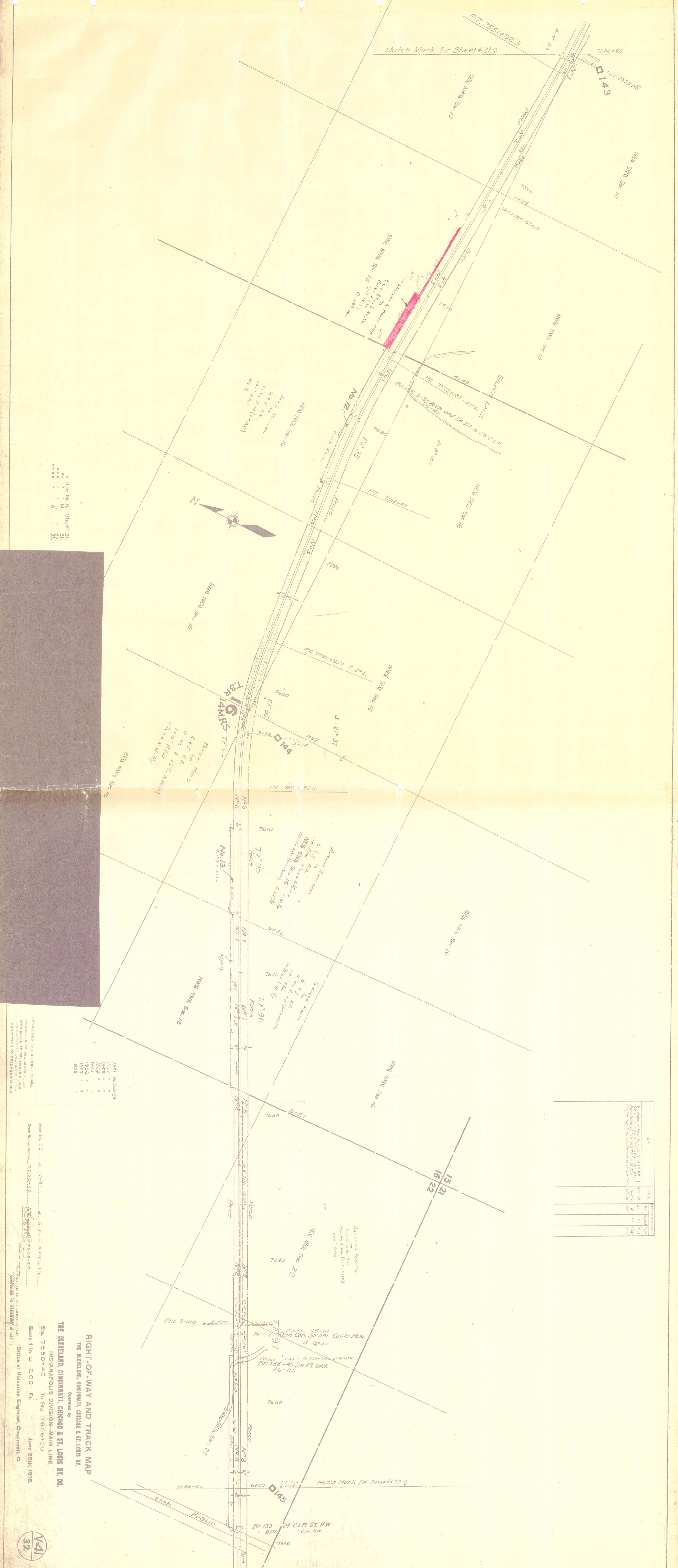
Station	A.F.E.	W.P.	Point	Year
11841				
11842				
11843				
11844				
11845				
11846				
11847				
11848				
11849				
11850				
11851				
11852				
11853				
11854				
11855				
11856				
11857				
11858				
11859				
11860				
11861				
11862				
11863				
11864				
11865				
11866				
11867				
11868				
11869				
11870				
11871				
11872				
11873				
11874				
11875				
11876				
11877				
11878				
11879				
11880				
11881				
11882				
11883				
11884				
11885				
11886				
11887				
11888				
11889				
11890				
11891				
11892				
11893				
11894				
11895				
11896				
11897				
11898				
11899				
11900				

1951 A.C. Change
1952
1953 1-2-57
1954 5-2-57
1955 4-2-58
1956 18-4-60
1957 18-4-60
1958 No Change
1959 No Change

CONNECTED TO BUCKEYER SHIPS.
CONNECTED TO DECEMBER 31, 1958.
CONNECTED TO DECEMBER 31, 1959.

THE CLEVELAND, CINCINNATI, CHICAGO & ST. LOUIS RY. CO.
RIGHT-OF-WAY AND TRACK MAP
THE CLEVELAND, CINCINNATI, CHICAGO & ST. LOUIS RY. CO.
INDIANAPOLIS DIVISION—MAIN LINE
Scale 1 in. = 200 ft.
June 30th, 1915.
Office of Valuation Engineer, Cincinnati, O.





Year	Acres	AP E	AP S	AP W	AP N	AP E	AP S	AP W	AP N
1915	1.00								
1916	1.00								
1917	1.00								
1918	1.00								
1919	1.00								
1920	1.00								
1921	1.00								
1922	1.00								
1923	1.00								
1924	1.00								
1925	1.00								
1926	1.00								
1927	1.00								
1928	1.00								
1929	1.00								
1930	1.00								

- 1931 No Change
- 1932 " "
- 1933 " "
- 1934 " "
- 1935 " "
- 1936 " "
- 1937 " "
- 1938 " "
- 1939 " "

SHEET NO. 32
 FROM SURVEYING...
 CONNECTED TO DECEMBER 31, 1936
 CONNECTED TO DECEMBER 31, 1937
 CONNECTED TO DECEMBER 31, 1938
 CONNECTED TO DECEMBER 31, 1939
 CONNECTED TO DECEMBER 31, 1940
 CONNECTED TO DECEMBER 31, 1941
 CONNECTED TO DECEMBER 31, 1942
 CONNECTED TO DECEMBER 31, 1943
 CONNECTED TO DECEMBER 31, 1944
 CONNECTED TO DECEMBER 31, 1945
 CONNECTED TO DECEMBER 31, 1946
 CONNECTED TO DECEMBER 31, 1947
 CONNECTED TO DECEMBER 31, 1948
 CONNECTED TO DECEMBER 31, 1949
 CONNECTED TO DECEMBER 31, 1950
 CONNECTED TO DECEMBER 31, 1951
 CONNECTED TO DECEMBER 31, 1952
 CONNECTED TO DECEMBER 31, 1953
 CONNECTED TO DECEMBER 31, 1954
 CONNECTED TO DECEMBER 31, 1955
 CONNECTED TO DECEMBER 31, 1956
 CONNECTED TO DECEMBER 31, 1957
 CONNECTED TO DECEMBER 31, 1958
 CONNECTED TO DECEMBER 31, 1959
 CONNECTED TO DECEMBER 31, 1960

RIGHT-OF-WAY AND TRACK MAP
 THE CLEVELAND, CINCINNATI, CHICAGO & ST. LOUIS RY.
 OPERATED BY
THE CLEVELAND, CINCINNATI, CHICAGO & ST. LOUIS RY. CO.
 INDIANAPOLIS DIVISION—MAIN LINE
 Scale 1 in. = 200 FT.
 June 30th, 1915.
 Office of Valuation Engineer, Cincinnati, O.

