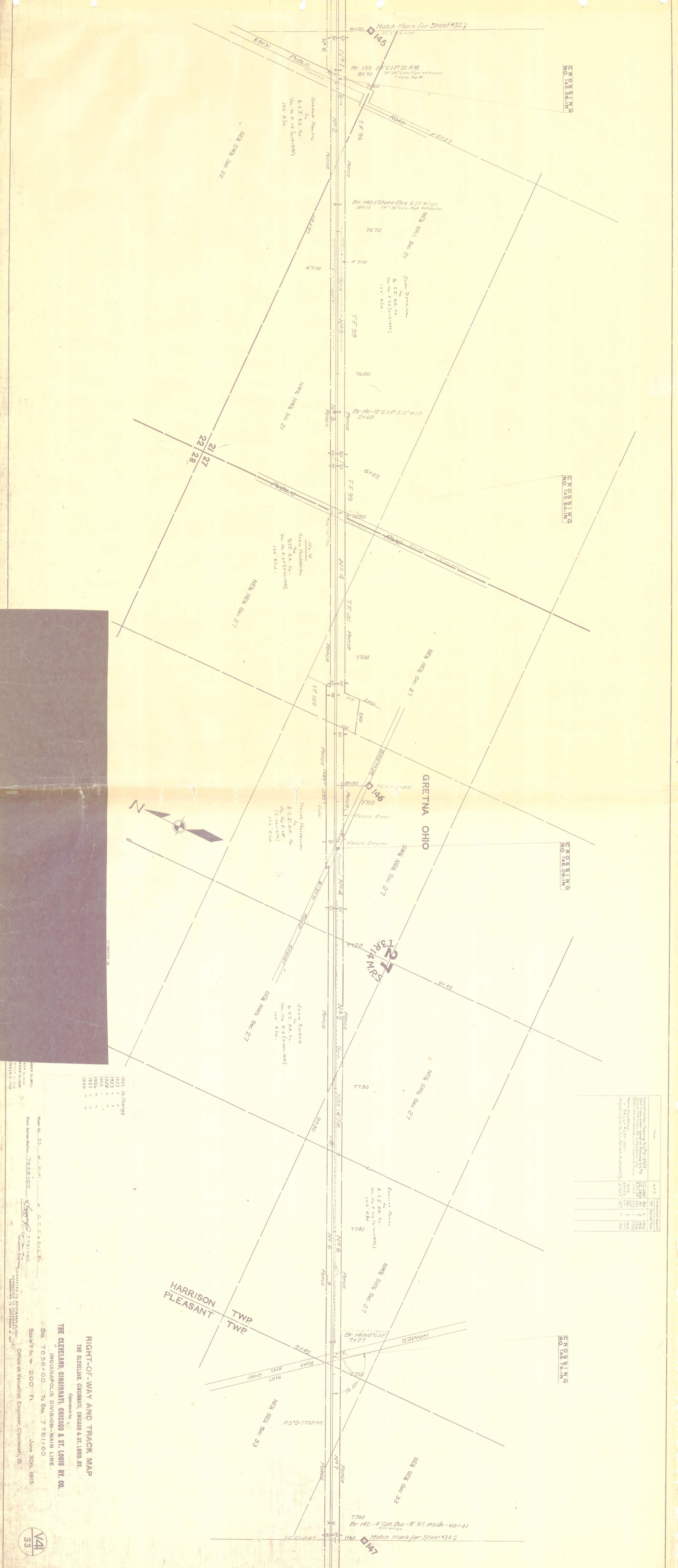


CROSSING  
NO. 145, 05-IN.

CROSSING  
NO. 145, 64-IN.

CROSSING  
NO. 146, 09-IN.

CROSSING  
NO. 145, 15-IN.



Year	Construction	Structure	Material
1916	Construction	Br 145	Concrete
1916	Construction	Br 146	Concrete
1916	Construction	Br 147	Concrete
1916	Construction	Br 148	Concrete
1916	Construction	Br 149	Concrete
1916	Construction	Br 150	Concrete
1916	Construction	Br 151	Concrete
1916	Construction	Br 152	Concrete
1916	Construction	Br 153	Concrete
1916	Construction	Br 154	Concrete
1916	Construction	Br 155	Concrete
1916	Construction	Br 156	Concrete
1916	Construction	Br 157	Concrete
1916	Construction	Br 158	Concrete
1916	Construction	Br 159	Concrete
1916	Construction	Br 160	Concrete

Year	Change
1931	No Change
1933	"
1934	"
1935	"
1936	"
1937	"
1938	"
1939	"

Scale 1 in. = 200 ft.

Office of Valuation Engineers, Cincinnati, O.

June 30th, 1915

RIGHT-OF-WAY AND TRACK MAP  
THE CLEVELAND, CINCINNATI, CHICAGO & ST. LOUIS RY. CO.  
INDIANAPOLIS DIVISION—MAIN LINE

Operated by  
THE CLEVELAND, CINCINNATI, CHICAGO & ST. LOUIS RY. CO.

Scale 1 in. = 200 ft.

Sta. 7656+00 To Sta. 7761+60

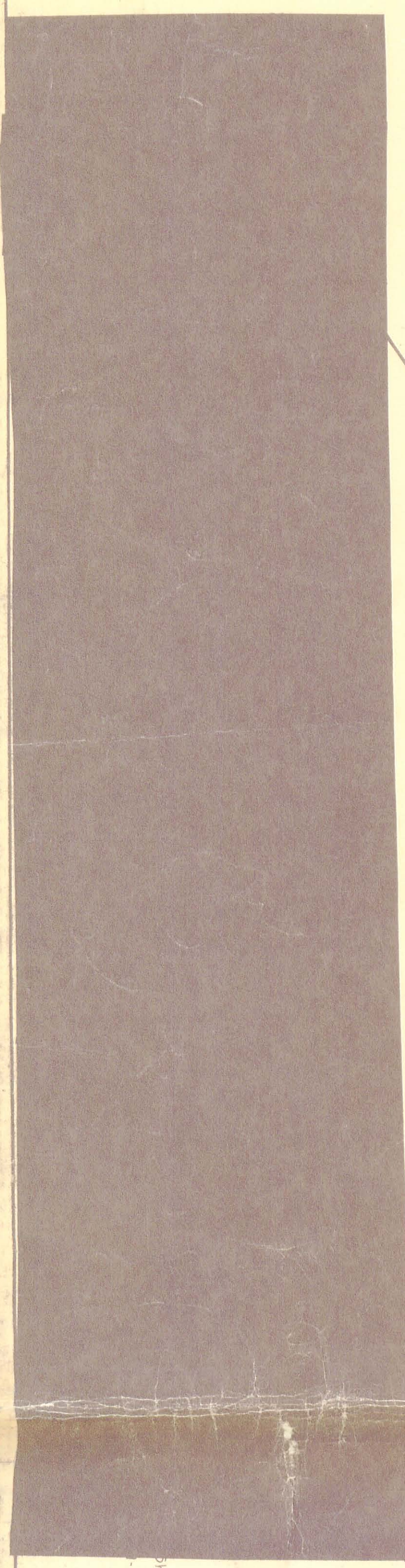
June 30th, 1915





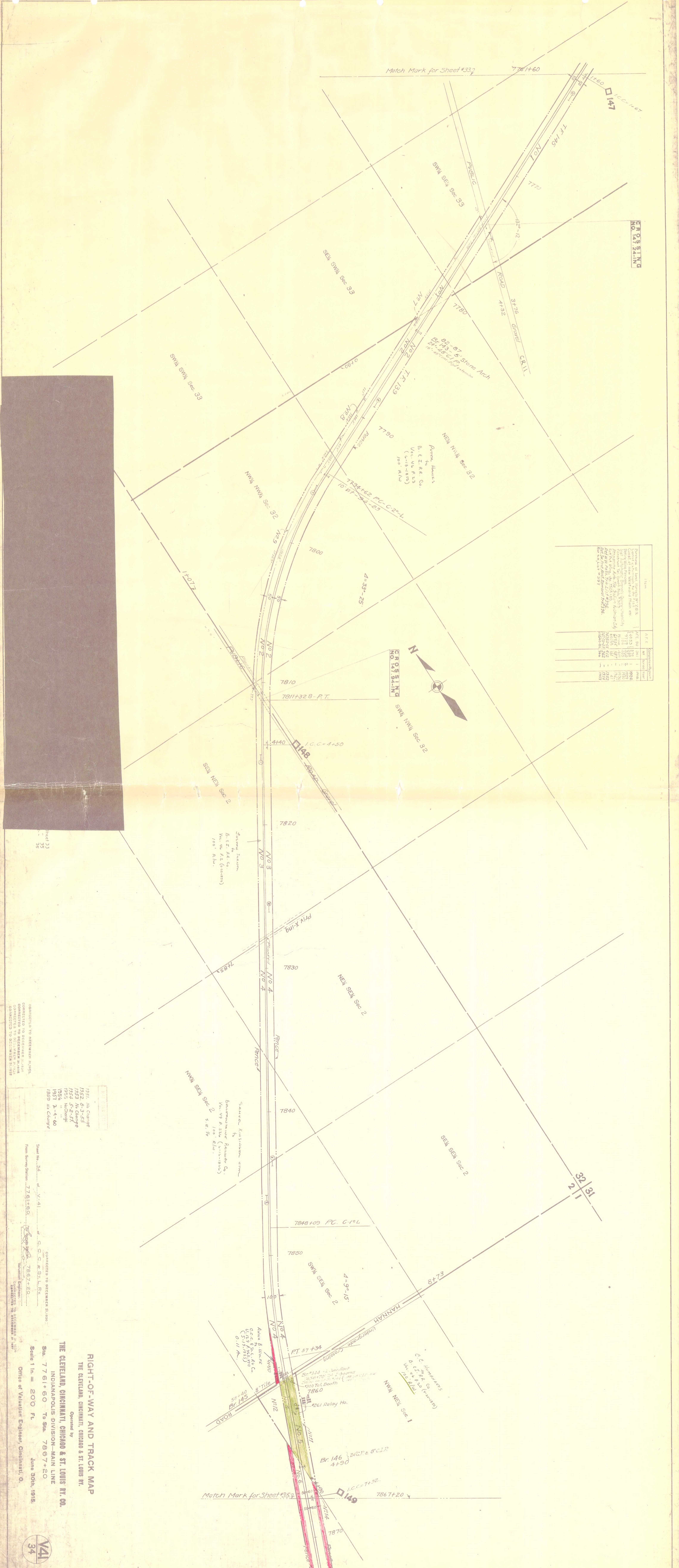
CROSSING  
NO. 147 24-IN.

Item	A.F.E.	Construction
Percentage of Total Property 77.9%	1	1946
Construction of Building	1	1946
Construction of Foundation	1	1946
Construction of Roof	1	1946
Construction of Walls	1	1946
Construction of Windows	1	1946
Construction of Doors	1	1946
Construction of Stairs	1	1946
Construction of Elevators	1	1946
Construction of Mechanical	1	1946
Construction of Electrical	1	1946
Construction of Plumbing	1	1946
Construction of Heating	1	1946
Construction of Air Conditioning	1	1946
Construction of Other	1	1946



Year	Description
1951	No Change
1952	8-3-55
1953	No Change
1954	No Change
1955	No Change
1956	No Change
1957	2-4-60
1959	No Change

RIGHT-OF-WAY AND TRACK MAP  
THE CLEVELAND, CINCINNATI, CHICAGO & ST. LOUIS RY.  
OPERATED BY  
THE CLEVELAND, CINCINNATI, CHICAGO & ST. LOUIS RY. CO.  
INDIANAPOLIS DIVISION - MAIN LINE  
Scale 1 in. = 200 Ft.  
June 30th, 1915.  
Office of Valuation Engineer, Cincinnati, O.



Match Mark for Sheet #337

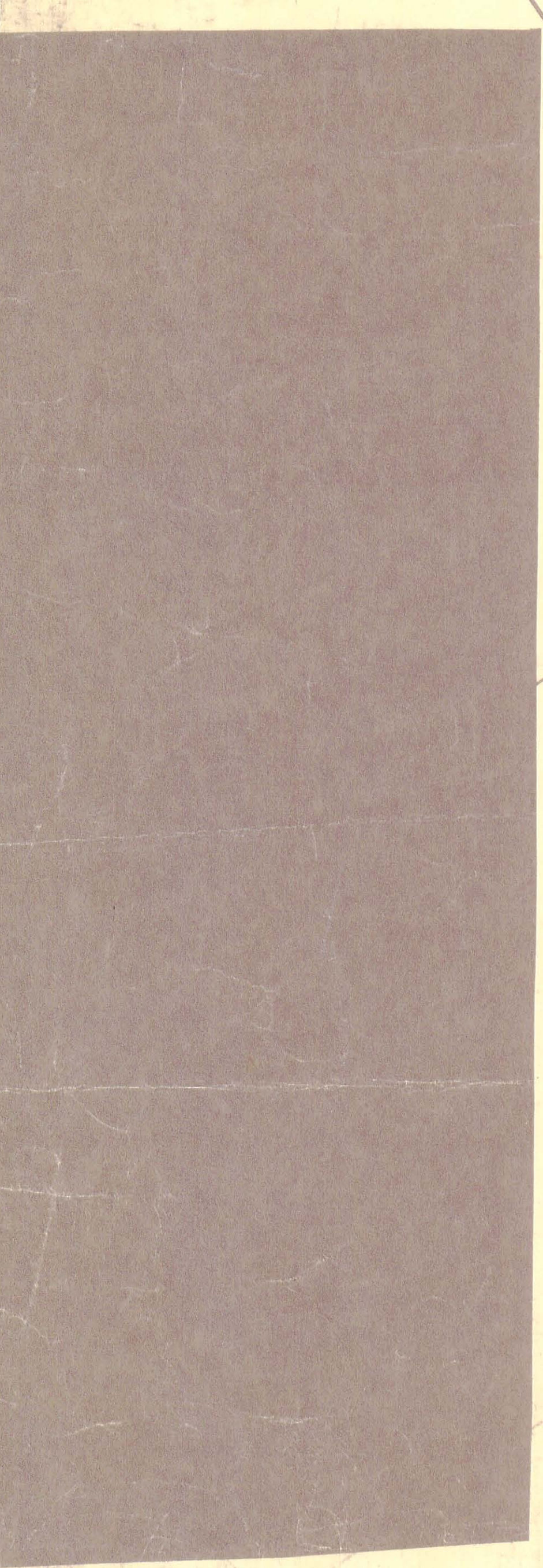
31  
32  
31

Match Mark for Sheet #352



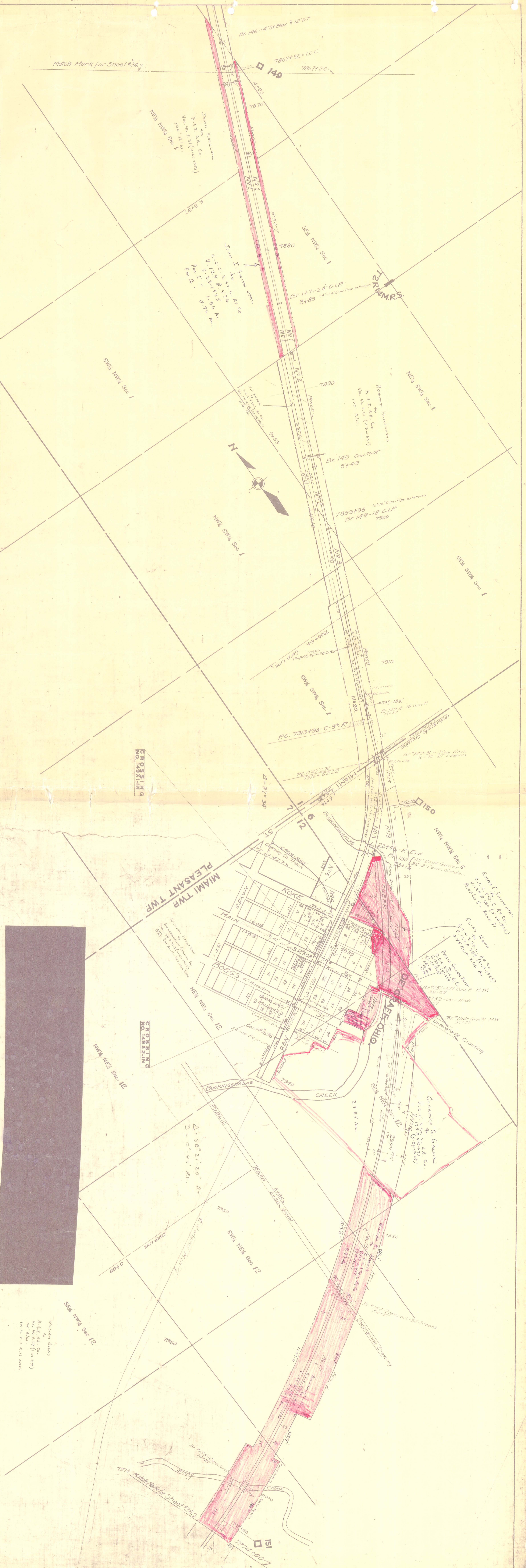
Match Mark for Sheet #347

Item	Amount	Completion Date
Professional Fee	100.00	1915
Field Work	100.00	1915
Office Expenses	100.00	1915
Printing	100.00	1915
Travel	100.00	1915
Materials	100.00	1915
Subcontractors	100.00	1915
Contingency	100.00	1915
Total	1000.00	1915



Year	Change
1951	No Change
1952	8-3-55
1953	No Change
1954	5-3-57
1955	4-1-58
1956	10-30-58
1957	No Change

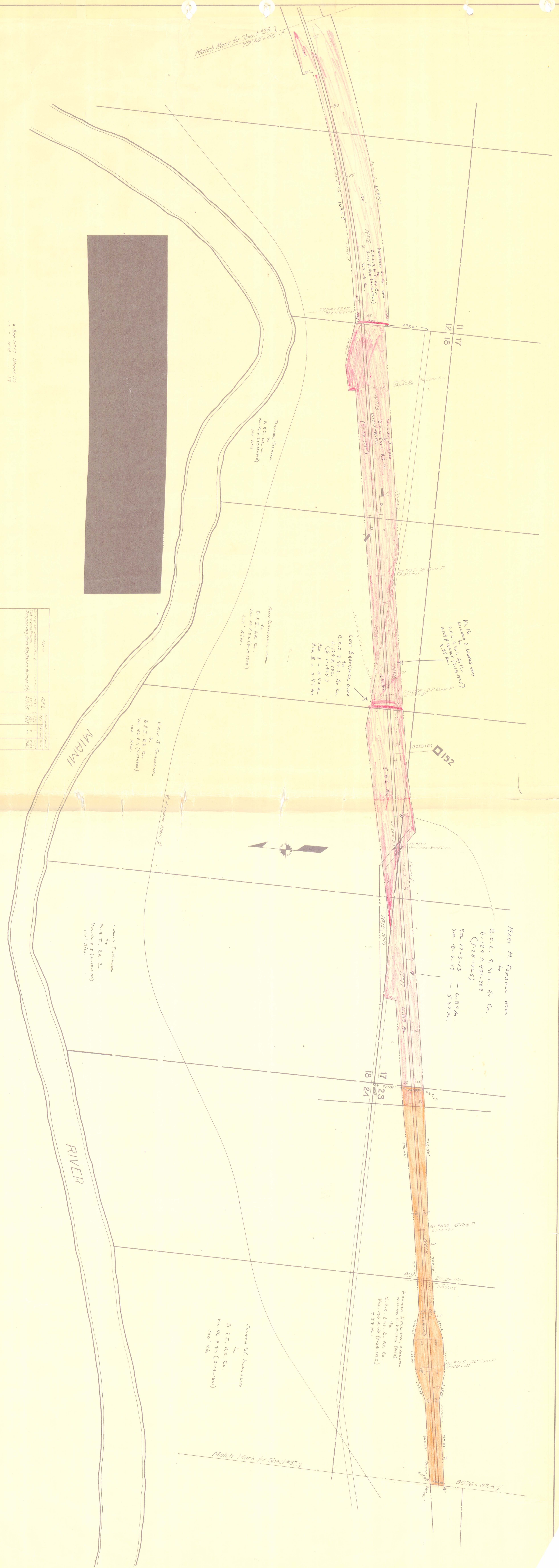
Sheet No. 35 of 35  
 From Survey Station 7867+20  
 C.C. & S.P. Co. Inc.  
 7878+80  
 THE CLEVELAND, CINCINNATI, CHICAGO & ST. LOUIS RY. CO.  
 INDIANAPOLIS DIVISION - MAIN LINE  
 Sta. 7867+20 To Sta. 7972+80  
 Scale 1 in. = 200 Ft.  
 June 30th, 1915  
 Office of Valuation Engineer, Cincinnati, O.



William E. Hill  
 B. E. & S. P. Co. Inc.  
 188 Kilbuck  
 South E. 1/2 S. 41/2 E. 21/2



Match Mark for Sheet #35.7  
7974+00



\* See 1917 - Sheet 35  
1918  
1919

Date	A.T.E.	Computation Date
1917	1917	1917
1918	1918	1918
1919	1919	1919

1931 No Change  
1932 "  
1933 "  
1934 "  
1935 "  
1936 "  
1937 "  
1938 "  
1939 "

**RIGHT-OF-WAY AND TRACK MAP**  
THE CLEVELAND, CINCINNATI, CHICAGO & ST. LOUIS RY.

Operated by  
**THE CLEVELAND, CINCINNATI & ST. LOUIS RY. CO.**  
INDIANAPOLIS DIVISION - MAIN LINE  
Sta. 7974+00 To Sta. 8076+87.87  
Dec. 31st, 1927

Office of Valuation Engineer, Cincinnati, O.

Scale 1 in. = 200 Ft.

Valuation Engineer, Cincinnati, O.

Dec. 31st, 1927

Scale 1 in. = 200 Ft.

Dec. 31st, 1927

Dec. 31st, 1927

Dec. 31st, 1927

Dec. 31st, 1927

Dec. 31st, 1927

Dec. 31st, 1927

Dec. 31st, 1927

Dec. 31st, 1927

Dec. 31st, 1927

Dec. 31st, 1927

Dec. 31st, 1927

Dec. 31st, 1927

Dec. 31st, 1927

Dec. 31st, 1927

Dec. 31st, 1927

Dec. 31st, 1927

Dec. 31st, 1927

Dec. 31st, 1927

Dec. 31st, 1927

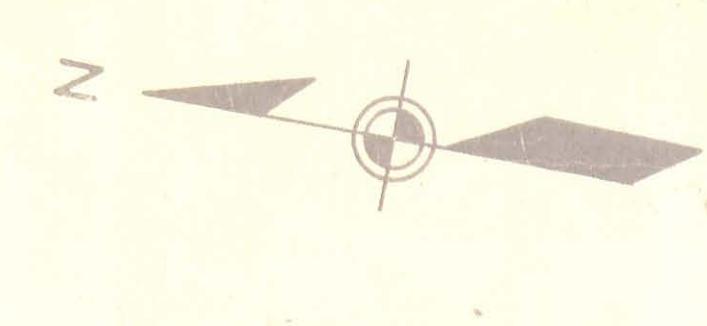
Dec. 31st, 1927



Match Mark for Sheet #36



Item	A.F.L.	Construction
Right-of-Way and Ditch Line	1924	1924
Right-of-Way and Ditch Line	1925	1925
Right-of-Way and Ditch Line	1926	1926
Right-of-Way and Ditch Line	1927	1927
Right-of-Way and Ditch Line	1928	1928
Right-of-Way and Ditch Line	1929	1929
Right-of-Way and Ditch Line	1930	1930
Right-of-Way and Ditch Line	1931	1931
Right-of-Way and Ditch Line	1932	1932
Right-of-Way and Ditch Line	1933	1933
Right-of-Way and Ditch Line	1934	1934
Right-of-Way and Ditch Line	1935	1935
Right-of-Way and Ditch Line	1936	1936
Right-of-Way and Ditch Line	1937	1937
Right-of-Way and Ditch Line	1938	1938
Right-of-Way and Ditch Line	1939	1939
Right-of-Way and Ditch Line	1940	1940



1951 No Change  
 1952 " " "  
 1953 " " "  
 1954 " " "  
 1955 No Change  
 1956 " " "  
 1957 " " "  
 1958 8-24-60  
 1959 11-28-61

See N1 - Sheet 38  
 16

**RIGHT-OF-WAY AND TRACK MAP**  
 THE CLEVELAND, CINCINNATI, CHICAGO & ST. LOUIS RR.  
 OPERATED BY  
**THE CLEVELAND, CINCINNATI, CHICAGO & ST. LOUIS RY. CO.**  
 INDIANAPOLIS DIVISION—MAIN LINE  
 STA. 9078+40 TO 9184+00  
 Scale 1 in. = 200 Ft.  
 Office of Valuation Engineers, Cincinnati, O.  
 June 30th, 1915

V-41  
 37

Match Mark for Sheet #36



Match Mark for Sheet #37

8184+00  
C.C. # 8163+37

35

CROSSING  
NO. 155-71-IN

MIAMI TWP.  
LOGAN CO.  
SHELBY CO.  
PERRY TWP.

Item	A/E	Checked	Date
Contract No. 155-71-IN			
Quantity of Work			
Estimated			
Actual			
Per Unit			
Total			
Approved			
Accepted			
Per Unit			
Total			
Approved			
Accepted			
Per Unit			
Total			



- 1951 4-27-53
- 1952 8-3-55
- 1953 1-2-57
- 1954 In Change
- 1955 "
- 1957 "
- 1959 "

PEMBERTON, O.

CROSSING  
NO. 155-75-IN

CROSSING  
NO. 156-82-IN

Match Mark for Sheet #39

38

**RIGHT-OF-WAY AND TRACK MAP**  
THE CLEVELAND, CINCINNATI, CHICAGO & ST. LOUIS RY. CO.  
THE CLEVELAND, CINCINNATI, CHICAGO & ST. LOUIS RY.

Created by

THE CLEVELAND, CINCINNATI, CHICAGO & ST. LOUIS RY. CO.  
INDIANAPOLIS DIVISION—MAIN LINE

Sta. 8164+00 To Sta. 8289+60

Scale 1 in. = 200 Ft. June 30th 1915.

Office of Valuation Engineer, Cincinnati, O.