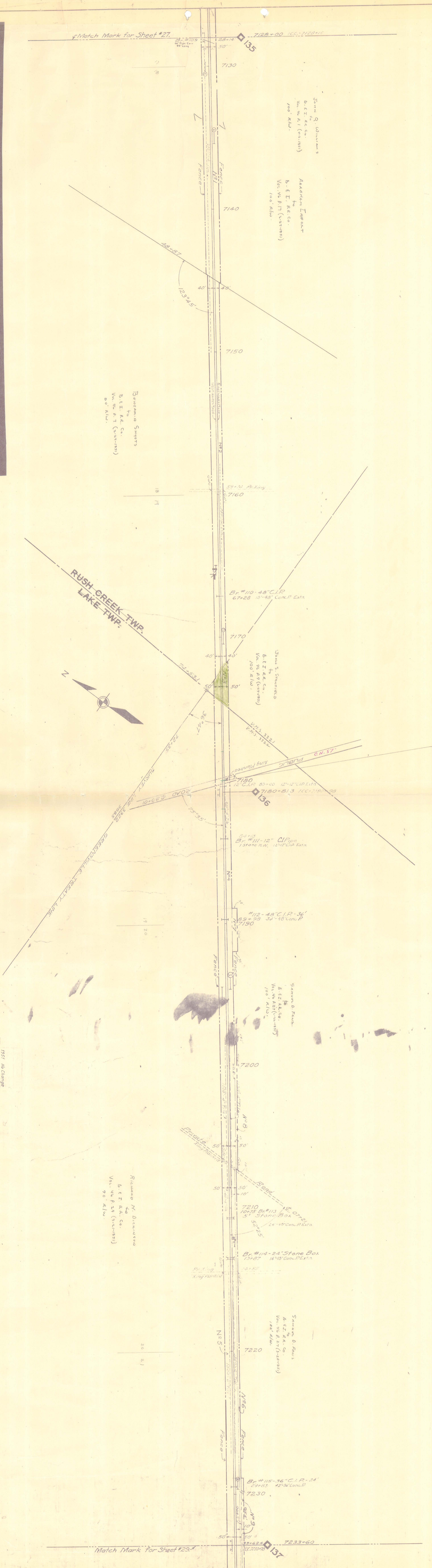


Match Mark for Sheet #27

7128+00 I.C. 112815



Item	Quantity	Unit	Value	Remarks
Grade 2 1/2" Non-Aerated Concrete	587.40	cu yd	1.17	
2 1/2" Non-Aerated Concrete	1.17	cu yd	1.17	
Concrete	1.17	cu yd	1.17	
Reinforcing Steel	1.17	cu yd	1.17	
Gravel	1.17	cu yd	1.17	
Earth	1.17	cu yd	1.17	
Excavation	1.17	cu yd	1.17	
Drainage	1.17	cu yd	1.17	
Gravel	1.17	cu yd	1.17	
Earth	1.17	cu yd	1.17	
Excavation	1.17	cu yd	1.17	
Drainage	1.17	cu yd	1.17	

CROSSING  
NO. 135, 99-IN.

Year	Change
1951	Exchange
1952	"
1953	"
1954	"
1955	"
1956	"
1957	"
1958	"
1959	"
1960	"

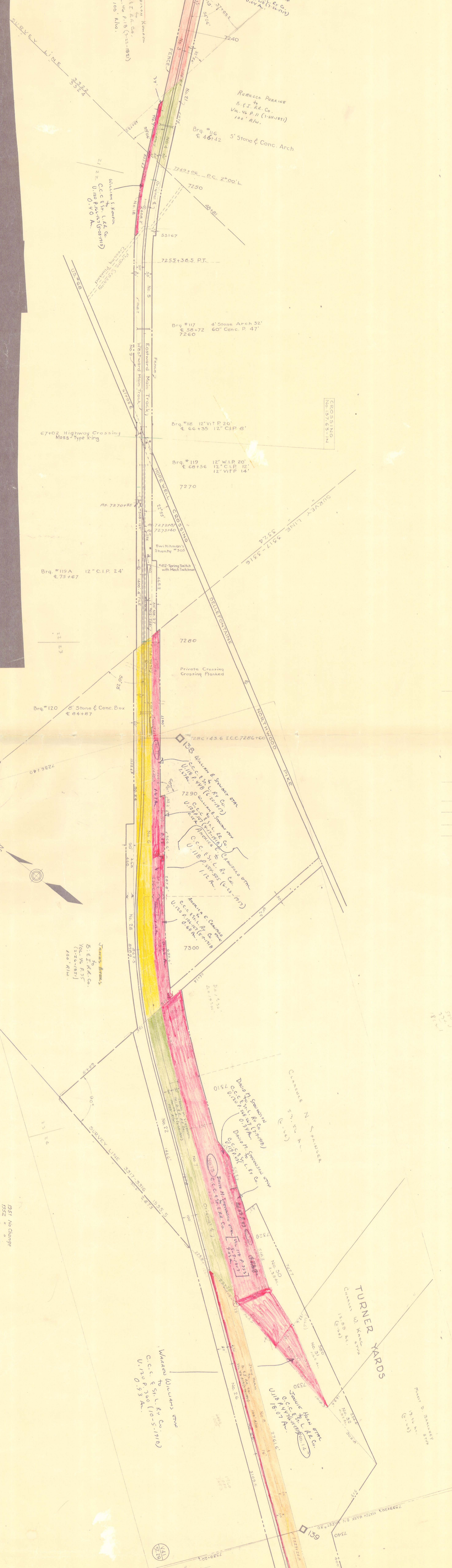
### RIGHT-OF-WAY AND TRACK MAP

THE CLEVELAND, CINCINNATI, CHICAGO & ST. LOUIS RY. CO.  
THE CLEVELAND, CINCINNATI, CHICAGO & ST. LOUIS RY.  
Operated by  
**THE CLEVELAND, CINCINNATI, CHICAGO & ST. LOUIS RY. CO.**  
INDIANAPOLIS DIVISION - MAIN LINE  
Sta. 7128+00 To Sta. 7233+60  
Scale 1 in. = 200 Ft.  
June 30th, 1915.  
Office of Valuation Engineer, Cincinnati, O.

Sheet No. 88. V. 4. I. C. & S. T. L. Ry. Co.  
From Survey Station 7128+00  
Valuation Engineer  
Checked by  
Approved by  
Connects to Sheet #134  
Connects to Sheet #135

Match Mark for Sheet #29

7233+60 I.C. 112815



ITEM	A.F.E. No.	Amount	Quantity	Unit	Total
1.00	7233160	1.00	1.00	sq. ft.	1.00
1.01	7233161	1.00	1.00	sq. ft.	1.00
1.02	7233162	1.00	1.00	sq. ft.	1.00
1.03	7233163	1.00	1.00	sq. ft.	1.00
1.04	7233164	1.00	1.00	sq. ft.	1.00
1.05	7233165	1.00	1.00	sq. ft.	1.00
1.06	7233166	1.00	1.00	sq. ft.	1.00
1.07	7233167	1.00	1.00	sq. ft.	1.00
1.08	7233168	1.00	1.00	sq. ft.	1.00
1.09	7233169	1.00	1.00	sq. ft.	1.00
1.10	7233170	1.00	1.00	sq. ft.	1.00
1.11	7233171	1.00	1.00	sq. ft.	1.00
1.12	7233172	1.00	1.00	sq. ft.	1.00
1.13	7233173	1.00	1.00	sq. ft.	1.00
1.14	7233174	1.00	1.00	sq. ft.	1.00
1.15	7233175	1.00	1.00	sq. ft.	1.00
1.16	7233176	1.00	1.00	sq. ft.	1.00
1.17	7233177	1.00	1.00	sq. ft.	1.00
1.18	7233178	1.00	1.00	sq. ft.	1.00
1.19	7233179	1.00	1.00	sq. ft.	1.00
1.20	7233180	1.00	1.00	sq. ft.	1.00

- See N.E. Sheet 28
- 1 - 51.50a
- 1 - 51.50b
- 1 - 51.50c
- 1 - 51.50d
- 1 - 51.50e
- 1 - 51.50f
- 1 - 51.50g
- 1 - 51.50h
- 1 - 51.50i
- 1 - 51.50j
- 1 - 51.50k
- 1 - 51.50l
- 1 - 51.50m
- 1 - 51.50n
- 1 - 51.50o
- 1 - 51.50p
- 1 - 51.50q



1951 No Change  
 1952 " "  
 1953 1-2-57  
 1954 No Change  
 1955 4-3-58  
 1956 No Change  
 1957 " "  
 1958 " "

CORRECTED TO DECEMBER 31, 1950.  
 Sheet No. 28, of A.C. & S.L.R. Co.,  
 From Survey Station 7233160  
 Valuation Engineer

**RIGHT-OF-WAY AND TRACK MAP**  
 CLEVELAND, CINCINNATI, CHICAGO & ST. LOUIS RY.  
 OPERATED BY  
**THE CLEVELAND, CINCINNATI, CHICAGO & ST. LOUIS RY. CO.**  
 INDIANAPOLIS DIVISION - MAIN LINE  
 STA. 7233160 TO STA. 7339120  
 SCALE 1 IN. = 200 FT. JUNE 30TH, 1915  
 Office of Valuation Engineer, Cincinnati, O.



Match Mark for Sheet #29.



BELLEFONTAINE, O.

1921, No Change  
 1923 " "  
 1924 " "  
 1925 " "  
 1926 " "  
 1927 " "  
 1928 " "  
 1929 " "

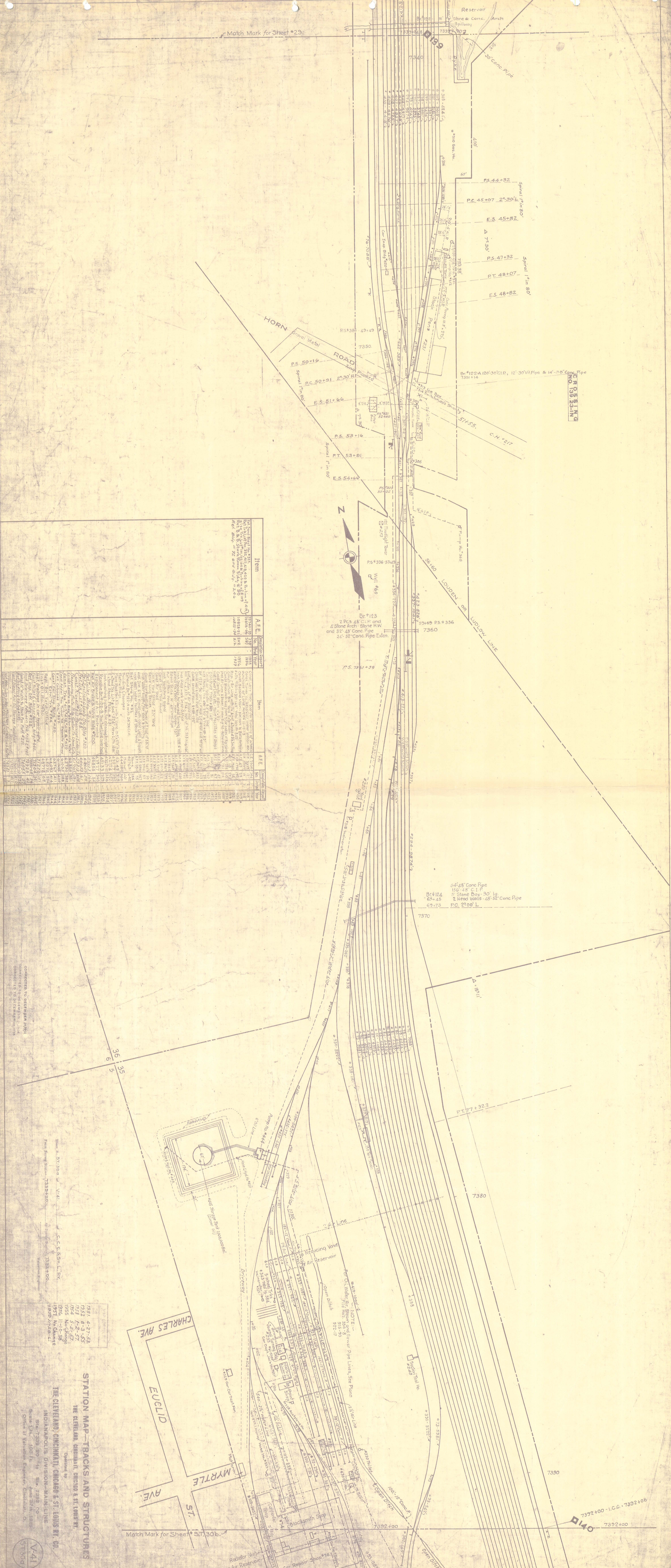
CONNECTED TO DECEMBER, 1919.  
 CONNECTED TO DECEMBER, 1919.  
 CONNECTED TO DECEMBER, 1919.  
 CONNECTED TO DECEMBER, 1919.

Sheet No. 30 of V-41  
 From Survey Station 7339+20 to Sta. 7444+80  
 THE CLEVELAND, CINCINNATI, CHICAGO & ST. LOUIS RY. CO.  
 THE CLEVELAND, CINCINNATI, CHICAGO & ST. LOUIS DIVISION - MAIN LINE  
 INDIANAPOLIS  
 Scale 1 in. = 200 ft.  
 June 30th, 1916  
 Office of Assistant Engineer, Cincinnati, O.

V-41  
 30

Match Mark for Sheet #29

ROSLING  
NO. 13923-IN



Item	A.F.E. No.	Comp. Date	Year	Item	A.F.E. No.	Comp. Date	Year
1. 24" Dia. Water Main, 1000' Long	1382-30	1936		1. 24" Dia. Water Main, 1000' Long	1382-30	1936	
2. 24" Dia. Sewer Main, 1000' Long	1382-31	1936		2. 24" Dia. Sewer Main, 1000' Long	1382-31	1936	
3. 24" Dia. Water Main, 500' Long	1382-32	1936		3. 24" Dia. Water Main, 500' Long	1382-32	1936	
4. 24" Dia. Sewer Main, 500' Long	1382-33	1936		4. 24" Dia. Sewer Main, 500' Long	1382-33	1936	
5. 24" Dia. Water Main, 250' Long	1382-34	1936		5. 24" Dia. Water Main, 250' Long	1382-34	1936	
6. 24" Dia. Sewer Main, 250' Long	1382-35	1936		6. 24" Dia. Sewer Main, 250' Long	1382-35	1936	
7. 24" Dia. Water Main, 125' Long	1382-36	1936		7. 24" Dia. Water Main, 125' Long	1382-36	1936	
8. 24" Dia. Sewer Main, 125' Long	1382-37	1936		8. 24" Dia. Sewer Main, 125' Long	1382-37	1936	
9. 24" Dia. Water Main, 62.5' Long	1382-38	1936		9. 24" Dia. Water Main, 62.5' Long	1382-38	1936	
10. 24" Dia. Sewer Main, 62.5' Long	1382-39	1936		10. 24" Dia. Sewer Main, 62.5' Long	1382-39	1936	

**STATION MAP—TRACKS AND STRUCTURES**

THE CLEVELAND, CINCINNATI, CINCINNATI & ST. LOUIS RR.  
 THE CLEVELAND, CINCINNATI, CINCINNATI & ST. LOUIS RR. CO.

INDIANAPOLIS DIVISION—MAIN LINE  
 Office of Valuation Engineer, Cincinnati, O.

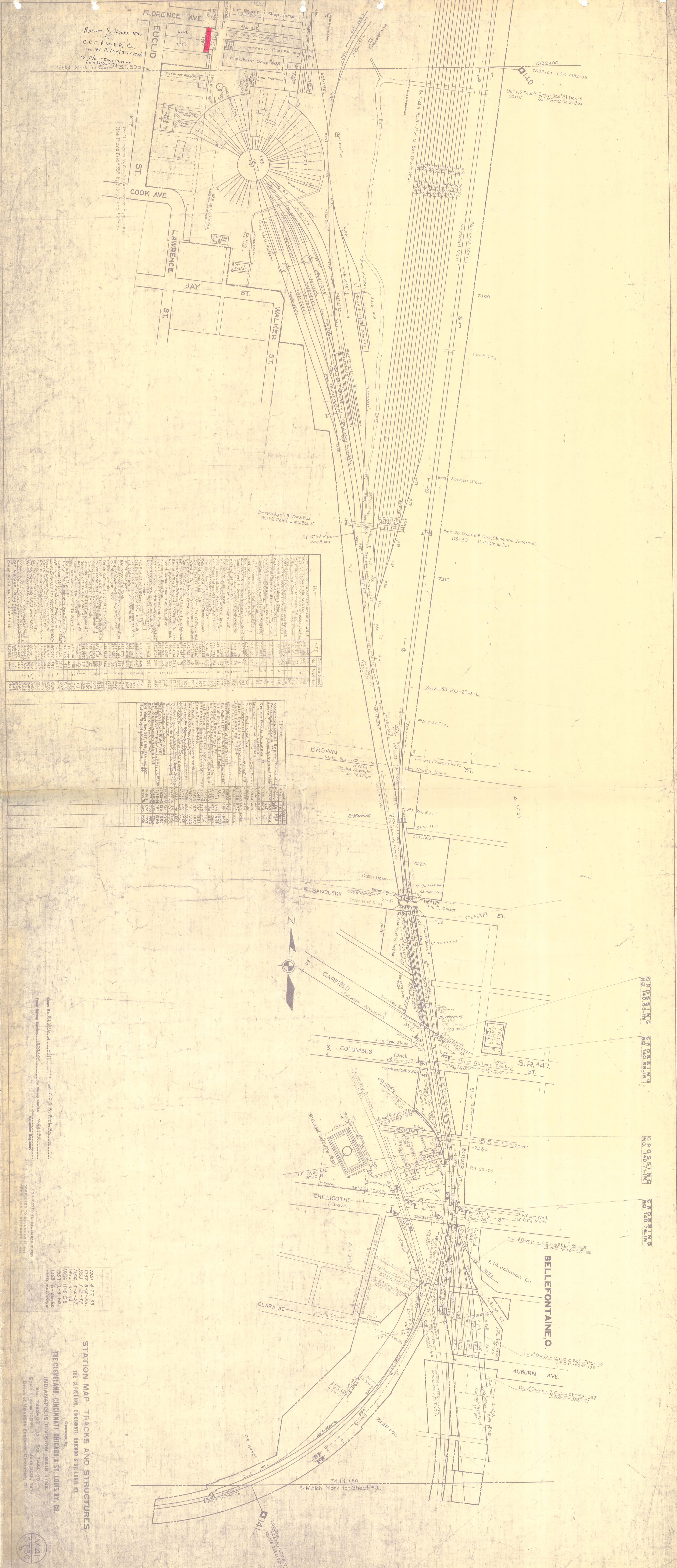
1951 4-27-53  
 1952 8-9-53  
 1953 5-5-53  
 1954 5-5-53  
 1955 No Change  
 1956 11-10-58  
 1957 No Change  
 1958 No Change

CONNECTED TO DEPARTMENT  
 CONDUCTED TO DEPARTMENT

V-41  
 1350

RACHEL S. JOSELYN ET AL.  
 C.C.C. & S.P. CO.  
 U.S. 94, P. 107 (3-22-1908)  
 15' E/W - CORNER OF  
 LAY 112 & 113

NOTE:  
 For All Street Water and Sewer Connections  
 See Plans P. 16-36, 37, 38, 39, 40, 41, 42, 43, 44, 45, 46, 47, 48, 49, 50, 51, 52, 53, 54, 55, 56, 57, 58, 59, 60, 61, 62, 63, 64, 65, 66, 67, 68, 69, 70, 71, 72, 73, 74, 75, 76, 77, 78, 79, 80, 81, 82, 83, 84, 85, 86, 87, 88, 89, 90, 91, 92, 93, 94, 95, 96, 97, 98, 99, 100, 101, 102, 103, 104, 105, 106, 107, 108, 109, 110, 111, 112, 113, 114, 115, 116, 117, 118, 119, 120, 121, 122, 123, 124, 125, 126, 127, 128, 129, 130, 131, 132, 133, 134, 135, 136, 137, 138, 139, 140, 141, 142, 143, 144, 145, 146, 147, 148, 149, 150, 151, 152, 153, 154, 155, 156, 157, 158, 159, 160, 161, 162, 163, 164, 165, 166, 167, 168, 169, 170, 171, 172, 173, 174, 175, 176, 177, 178, 179, 180, 181, 182, 183, 184, 185, 186, 187, 188, 189, 190, 191, 192, 193, 194, 195, 196, 197, 198, 199, 200, 201, 202, 203, 204, 205, 206, 207, 208, 209, 210, 211, 212, 213, 214, 215, 216, 217, 218, 219, 220, 221, 222, 223, 224, 225, 226, 227, 228, 229, 230, 231, 232, 233, 234, 235, 236, 237, 238, 239, 240, 241, 242, 243, 244, 245, 246, 247, 248, 249, 250, 251, 252, 253, 254, 255, 256, 257, 258, 259, 260, 261, 262, 263, 264, 265, 266, 267, 268, 269, 270, 271, 272, 273, 274, 275, 276, 277, 278, 279, 280, 281, 282, 283, 284, 285, 286, 287, 288, 289, 290, 291, 292, 293, 294, 295, 296, 297, 298, 299, 300, 301, 302, 303, 304, 305, 306, 307, 308, 309, 310, 311, 312, 313, 314, 315, 316, 317, 318, 319, 320, 321, 322, 323, 324, 325, 326, 327, 328, 329, 330, 331, 332, 333, 334, 335, 336, 337, 338, 339, 340, 341, 342, 343, 344, 345, 346, 347, 348, 349, 350, 351, 352, 353, 354, 355, 356, 357, 358, 359, 360, 361, 362, 363, 364, 365, 366, 367, 368, 369, 370, 371, 372, 373, 374, 375, 376, 377, 378, 379, 380, 381, 382, 383, 384, 385, 386, 387, 388, 389, 390, 391, 392, 393, 394, 395, 396, 397, 398, 399, 400, 401, 402, 403, 404, 405, 406, 407, 408, 409, 410, 411, 412, 413, 414, 415, 416, 417, 418, 419, 420, 421, 422, 423, 424, 425, 426, 427, 428, 429, 430, 431, 432, 433, 434, 435, 436, 437, 438, 439, 440, 441, 442, 443, 444, 445, 446, 447, 448, 449, 450, 451, 452, 453, 454, 455, 456, 457, 458, 459, 460, 461, 462, 463, 464, 465, 466, 467, 468, 469, 470, 471, 472, 473, 474, 475, 476, 477, 478, 479, 480, 481, 482, 483, 484, 485, 486, 487, 488, 489, 490, 491, 492, 493, 494, 495, 496, 497, 498, 499, 500, 501, 502, 503, 504, 505, 506, 507, 508, 509, 510, 511, 512, 513, 514, 515, 516, 517, 518, 519, 520, 521, 522, 523, 524, 525, 526, 527, 528, 529, 530, 531, 532, 533, 534, 535, 536, 537, 538, 539, 540, 541, 542, 543, 544, 545, 546, 547, 548, 549, 550, 551, 552, 553, 554, 555, 556, 557, 558, 559, 560, 561, 562, 563, 564, 565, 566, 567, 568, 569, 570, 571, 572, 573, 574, 575, 576, 577, 578, 579, 580, 581, 582, 583, 584, 585, 586, 587, 588, 589, 590, 591, 592, 593, 594, 595, 596, 597, 598, 599, 600, 601, 602, 603, 604, 605, 606, 607, 608, 609, 610, 611, 612, 613, 614, 615, 616, 617, 618, 619, 620, 621, 622, 623, 624, 625, 626, 627, 628, 629, 630, 631, 632, 633, 634, 635, 636, 637, 638, 639, 640, 641, 642, 643, 644, 645, 646, 647, 648, 649, 650, 651, 652, 653, 654, 655, 656, 657, 658, 659, 660, 661, 662, 663, 664, 665, 666, 667, 668, 669, 670, 671, 672, 673, 674, 675, 676, 677, 678, 679, 680, 681, 682, 683, 684, 685, 686, 687, 688, 689, 690, 691, 692, 693, 694, 695, 696, 697, 698, 699, 700, 701, 702, 703, 704, 705, 706, 707, 708, 709, 710, 711, 712, 713, 714, 715, 716, 717, 718, 719, 720, 721, 722, 723, 724, 725, 726, 727, 728, 729, 730, 731, 732, 733, 734, 735, 736, 737, 738, 739, 740, 741, 742, 743, 744, 745, 746, 747, 748, 749, 750, 751, 752, 753, 754, 755, 756, 757, 758, 759, 760, 761, 762, 763, 764, 765, 766, 767, 768, 769, 770, 771, 772, 773, 774, 775, 776, 777, 778, 779, 780, 781, 782, 783, 784, 785, 786, 787, 788, 789, 790, 791, 792, 793, 794, 795, 796, 797, 798, 799, 800, 801, 802, 803, 804, 805, 806, 807, 808, 809, 810, 811, 812, 813, 814, 815, 816, 817, 818, 819, 820, 821, 822, 823, 824, 825, 826, 827, 828, 829, 830, 831, 832, 833, 834, 835, 836, 837, 838, 839, 840, 841, 842, 843, 844, 845, 846, 847, 848, 849, 850, 851, 852, 853, 854, 855, 856, 857, 858, 859, 860, 861, 862, 863, 864, 865, 866, 867, 868, 869, 870, 871, 872, 873, 874, 875, 876, 877, 878, 879, 880, 881, 882, 883, 884, 885, 886, 887, 888, 889, 890, 891, 892, 893, 894, 895, 896, 897, 898, 899, 900, 901, 902, 903, 904, 905, 906, 907, 908, 909, 910, 911, 912, 913, 914, 915, 916, 917, 918, 919, 920, 921, 922, 923, 924, 925, 926, 927, 928, 929, 930, 931, 932, 933, 934, 935, 936, 937, 938, 939, 940, 941, 942, 943, 944, 945, 946, 947, 948, 949, 950, 951, 952, 953, 954, 955, 956, 957, 958, 959, 960, 961, 962, 963, 964, 965, 966, 967, 968, 969, 970, 971, 972, 973, 974, 975, 976, 977, 978, 979, 980, 981, 982, 983, 984, 985, 986, 987, 988, 989, 990, 991, 992, 993, 994, 995, 996, 997, 998, 999, 1000



Item	Quantity	Unit	Notes
Excavation	100	cu yd	For foundation
Concrete	50	cu yd	For foundation
Reinforcing Steel	1000	lb	For foundation
Brick	10000	sq ft	For foundation
Plaster	1000	sq ft	For foundation
Paint	100	gal	For foundation
Formwork	1000	sq ft	For foundation
Iron Pipe	100	ft	For foundation
Cast Iron Pipe	100	ft	For foundation
Galvanized Pipe	100	ft	For foundation
Steel Pipe	100	ft	For foundation
Concrete Pipe	100	ft	For foundation
Brick	10000	sq ft	For foundation
Plaster	1000	sq ft	For foundation
Paint	100	gal	For foundation
Formwork	1000	sq ft	For foundation
Iron Pipe	100	ft	For foundation
Cast Iron Pipe	100	ft	For foundation
Galvanized Pipe	100	ft	For foundation
Steel Pipe	100	ft	For foundation
Concrete Pipe	100	ft	For foundation

Item	Quantity	Unit	Notes
Excavation	100	cu yd	For foundation
Concrete	50	cu yd	For foundation
Reinforcing Steel	1000	lb	For foundation
Brick	10000	sq ft	For foundation
Plaster	1000	sq ft	For foundation
Paint	100	gal	For foundation
Formwork	1000	sq ft	For foundation
Iron Pipe	100	ft	For foundation
Cast Iron Pipe	100	ft	For foundation
Galvanized Pipe	100	ft	For foundation
Steel Pipe	100	ft	For foundation
Concrete Pipe	100	ft	For foundation
Brick	10000	sq ft	For foundation
Plaster	1000	sq ft	For foundation
Paint	100	gal	For foundation
Formwork	1000	sq ft	For foundation
Iron Pipe	100	ft	For foundation
Cast Iron Pipe	100	ft	For foundation
Galvanized Pipe	100	ft	For foundation
Steel Pipe	100	ft	For foundation
Concrete Pipe	100	ft	For foundation

STATION MAP - TRACKS AND STRUCTURES  
 THE CLEVELAND, CINCINNATI, CHICAGO & ST. LOUIS RR  
 THE CLEVELAND, CINCINNATI, CHICAGO & ST. LOUIS RR CO.  
 INDIANAPOLIS DIVISION - MAIN LINE  
 Scale: 1 inch = 100 feet  
 Date: June 20th, 1915  
 Office of Mechanical Engineers, Cincinnati, O.

1951 4-27-53  
 1952 9-3-55  
 1953 1-2-57  
 1954 5-2-57  
 1955 11-5-58  
 1957 2-4-60  
 1958 9-24-60  
 1959 11-19-60

