

corner tree, and the roots of a medium  
 sized Sugar tree, which sd. Thornton told me  
 was one of the corner trees; here I marked a  
 Sugar 12 Ln. Dis. thus 'X' bearing S. 64° E. 42 links  
 from said stone, another Sugar 13 Ln. Dis. N.  
 74° E. 38 links; and a Pidgeon oak 4 Ln.  
Dis. N. 85° W. 37 links; Thence with the line  
 between Surveys Nos. 9892 & 9893 S. 10° E. 110  
 Poles to an Ash Sapling 2 Ln. Dis., at the  
 N. W. corner of Wm. Furrows land, by the  
 side of which I planted a lime stone  
 marked '+', and from which I marked a white  
 maple 15 Ln. Dis. bearing S. 11° E. 18 links, &  
 a Sour Elm 18 Ln. Dis. N. 32° E. 22 links;  
 Thence N. 77° E. 44 Poles to a lime stone  
 marked '+', at William Furrows N. E. corner,  
 which was established at this point before  
 me on the said 26<sup>th</sup> day of Oct. A. D. 1858,  
 by the mutual agreement of the said  
 Charles H. Thornton, Job Wickersham,  
 and William Furrow, from which I  
 marked a Black Ash 13 Ln. Dis. bearing S.  
 77° W. 28 links; Thence S. 9° E. 29 Poles  
 to a lime stone marked '+', John Furrows  
 N. W. corner in Wm. Furrows East line, from  
 which a Lyncd 26 Ln. Dis. bears N. 52° E.  
 43 links; Thence N. 77° E. 44 Poles to an  
 Ironwood 4 Ln. Dis. (by the side of which is  
 a lime stone marked '+') at John Furrows  
 N. E. corner, & from which I marked a  
 Beech 19 Ln. Dis. bearing S. 84½° E. 10 links;  
 Thence S. 11° E. 81½ Poles to the centre  
 of a Sour Elm 30 Ln. Dis., and S. E. corner  
 to the land sold to John Furrow by  
 Charles H. Thornton; Thence S. 10° & 20° E.  
 (crossing Bokes creek at 72½ Poles) 108

Poles to a lime stone marked '+' which I planted at the S. E. corner of Harriet Murrey's land, from which I marked a Sugar 5 Ln. Dir. bearing N. 17 1/4 E. 8 1/2 links, & a Sugar 7 Ln. Dir. S 79 1/2 W. 50 links; Thence S. 81 W. 89 2/10 poles to a lime stone marked '+' which I planted in a large-hollow-hickory stump in the West line of said Survey No. 9893, and at the S. W. corner of the said Harriet Murrey's land, from which I marked an Ironwood 8 Ln. Dir. bearing S. 80 1/2 W. 10 links, and a Beech 16 Ln. Dir. S. 23 W. 23 links. Thence S. 9 3/4 E. 100 2/10 Poles with the west line of said Survey to the place of beginning, containing three hundred & eighty two acres and eighty eight hundredths of an acre, (382 88/100 acres) ---

All the above named witness, and corner trees are marked thus 'X', cut with an ax in the side facing the corner; except the large Elm at John Furrow's S. E. corner, which is not thus marked.

Job Wickersham }  
 Charles H. Thornton } Chain Men, by mutual agreement.

I do hereby certify that the foregoing plat and Report of Survey, are correct.

Henry C. Moore, County Surveyor  
 of Logan County, Ohio.

328

Survey No. 781

8223

Magnetic Meridian

John McCall's

Block line  $N. 53^{\circ} \frac{3}{4} W. 138^{\circ} \frac{1}{10}$  Poles

Beginning

Part of Vir. Mil. Sur.  
No. 4655  
Perry Tp.

B. & C. S. Co. Road

Stone & small sugar

John Garwood's land

255 Poles

Charles H. Thornton  
 $239^{\frac{26}{100}}$  Acres

Stone quarry

N. 57 W

Asher's heirs

N.  $53^{\circ} 25'$  E. 150 Poles

Block line &  $\frac{1}{2}$  m Road

George Vernon's land  
McFairy's heirs

S. 37 E. 70 Poles

S. 36 E. 171 Poles

Scale  
40 Poles or  
16 chains or  
to an inch

Surveyor's Office, Bellefontaine, Ohio  
Nov. 11<sup>th</sup> A. D. 1858

The above plat is a representation of  $239^{\frac{26}{100}}$  Acres of land, being a part of Virginia Military Survey No. 4655, in the name of the Representatives of Leuelling Jones, and and in Perry Township of Logan County Ohio.



399  
As surveyed by me, Th. C. Moore, the  
County Surveyor of said County of Logan,  
on the 28<sup>th</sup> & 29 days of October A. D. 1858,  
at the Request of John Wickersham, of  
Boker Creek Township of sd. County of Logan  
for the purpose of establishing the lines,  
and corners thereof, and ascertaining the  
number of Acres contained therein; which  
I did in the following manner; to wit;

Beginning, at a Stone in the North  
line of said Survey, and at the S. W.  
corner of John Gorwood's land, (in the  
same survey) from which a Sugar tree 6 In.  
Diameter bears S. 58° E. two links distant,  
run thence with the North line of said  
Survey, at 5<sup>3</sup>/<sub>4</sub> M. 138<sup>7</sup>/<sub>10</sub> Poles, crossing a  
branch at 9<sup>3</sup>/<sub>4</sub> Poles, & a spring branch at  
109 Poles, to a stone at the North  
side of a road leading from Hanesfield  
to East Liberty, from which a lime  
stone bears N. 60° W. 11 links. Thence S. 60° E.  
10<sup>2</sup>/<sub>10</sub> Poles, crossing said road, (at very acute  
angles,) to a Rock Stone, near the South  
side of said road, from which a  
Walnut tree 12 In. Diameter bears N. 54<sup>1</sup>/<sub>4</sub> W.  
33 links; Thence S. 34<sup>1</sup>/<sub>4</sub> W. 15<sup>7</sup>/<sub>10</sub> poles to  
a Rock stone, from which a Beech  
22 In. Diameter bears S. 13<sup>1</sup>/<sub>2</sub> E. 8 links; Thence  
S. 57° W. two poles to a Rock Stone from  
which said Beech 22 In. Diameter bears S. 67<sup>1</sup>/<sub>2</sub> E.  
47 links; Thence S. 37° E., with the East  
line of John McCalley's land 70<sup>2</sup>/<sub>10</sub> Poles  
to a rock stone, from which a Walnut  
tree 6 In. Diameter bears S. 81<sup>1</sup>/<sub>2</sub> W. 64 links,  
Thence N. 52° E. two Poles to a stone,  
Thence at 36<sup>1</sup>/<sub>2</sub> E., with the East line of the lands

The original of this page is blank or missing.

owned by John Mc Lain's heirs, and George Vernon, 171<sup>3</sup>/<sub>10</sub> Poles, (passing the corner betw said ~~said~~ heirs & Vernon. at 86 poles) to a Stone in the angle of a road, at said Vernons S. W. corner, and in the south line of said Survey, from which a Bee 18<sup>1</sup>/<sub>2</sub> Dir. bears S. 4<sup>0</sup> E. 26 links; Thence with said Road & south line of survey, N 5<sup>3</sup>/<sub>8</sub> E. 25<sup>0</sup> E. 150<sup>7</sup>/<sub>10</sub> Poles, (crossing a branch at 44<sup>5</sup>/<sub>10</sub> poles, and passing a stone at the corner between Austins heirs at 64<sup>5</sup>/<sub>10</sub> poles to a stone in said Road, & Survey line at the Widow Howes S. W. corner, from which a stone bears N. 37<sup>0</sup> W. 50 links, Thence N. 37<sup>0</sup> W. with the west line of said Widow Howe, and John Garwoods Land, 255 poles, (crossing said Road leading from Hanesfield to East Liberty at 105 poles,) to the place of beginning

Containing Two Hundred & Thirty nine Acres, and twenty six hundredths of an acre = (239<sup>26</sup>/<sub>100</sub> acres)

All the afore named witness trees are marked thus, 'X' cut in the side facing the corner

Charles H. Thornton }  
 Job Wickersham } Co. by mutual agreement

I hereby certify that the foregoing plat and Report are correct

Henry C. Moore, County Surv.  
 of Logan County Ohio





333  
12 links, a Cherry 6 Ln. Dir. S.  $14^{\circ}$  W.  $16\frac{1}{2}$  links  
and an Ash 12 Ln. Dir. S.  $5\frac{3}{4}$  E.  $25\frac{1}{2}$  links  
distant: Run thence S.  $9^{\circ}$  &  $52'$  E. with  
said Rudiger's East line,  $198\frac{8}{10}$  Poles,  
(passing 4 old line trees in the first 50  
rod, and a Stone in the centre of a  
County Road at  $127\frac{1}{10}$  Poles,) to a stone  
which I planted in said Rudiger's E. line  
at the N.W. corner of Mr. William's heirs,  
from which I marked a Beech 20 Ln. Dir.  
bearing S.  $80^{\circ}$  W. 6 links; & a Sugar 17 Ln.  
Dir. S.  $7\frac{1}{2}$  E. 28 links distant, Thence N.  $79^{\circ}$  E.  
 $160\frac{3}{10}$  Poles, (crossing Bokes Creek at 80 poles)  
to a stone which I planted in Oliver  
Corwin's West line, from which I marked  
a Beech 10 Ln. Dir. bearing N.  $70^{\circ}$  E.  $12\frac{1}{2}$  links,  
and a Beech 12 Ln. Dir. S.  $7^{\circ}$  W. 89 links;  
Thence N.  $9^{\circ}$  &  $33'$  W.  $65\frac{9}{10}$  Poles, (passing the  
centre of a Black Walnut tree 4 feet in Dir.  
at  $7\frac{48}{100}$  chains) to a stone which I planted  
in the middle of a County Road, at said  
Oliver Corwin's N.W. corner, from which  
I marked a Bur Oak 23 Ln. Dir. S.  $70^{\circ}$  W. 16 links,  
& a Bur Oak 8 Ln. Dir. S.  $1\frac{1}{2}$  W.  $50\frac{1}{2}$  links,  
Thence with the same bearing, (N.  $9^{\circ}$  &  $33'$  W.)  
crossing Bokes Creek at  $21\frac{1}{2}$  poles, (or  $95\frac{1}{4}$  poles  
from the S.E. corner,)  $130\frac{7}{10}$  Poles, (or  $196\frac{3}{10}$  poles  
from the S.E. corner) to a stone which  
I planted in the N. line of said survey,  
from which I marked a Sugar tree 28 Ln.  
Dir. S.  $47^{\circ}$  W. 11 links, a Beech 13 Ln. Dir.  
S.  $74^{\circ}$  W. 13 links, & a Beech 12 Ln. Dir. N.  
 $80^{\circ}$  E. 14 links; Thence S.  $80\frac{1}{4}$  W. with the  
N. line of the said Survey  $160\frac{9}{10}$  Poles to  
the place of beginning, containing



One Hundred & Ninety eight acres, and <sup>3/4</sup> one  
half of an acre = (198 <sup>3</sup>/<sub>4</sub> acres) - - - -

All of the afore named corner stones are  
marked with a notch in the top, & the  
witness trees thus 'X' cut in the side  
facing the ~~the~~ corner, - - - -

Done in presence of

Joseph N. Dickinson

Lawson Rudiger

Oliver Corwin

Christopher Bline

& James Jordan

Christopher Bline

James Jordan

Chain Men: - - -

I hereby certify that the fore-  
going plat & Report are correct - - -

Henry C. Moore,

County Surveyor of Logan Co., W. Va.

575

8636

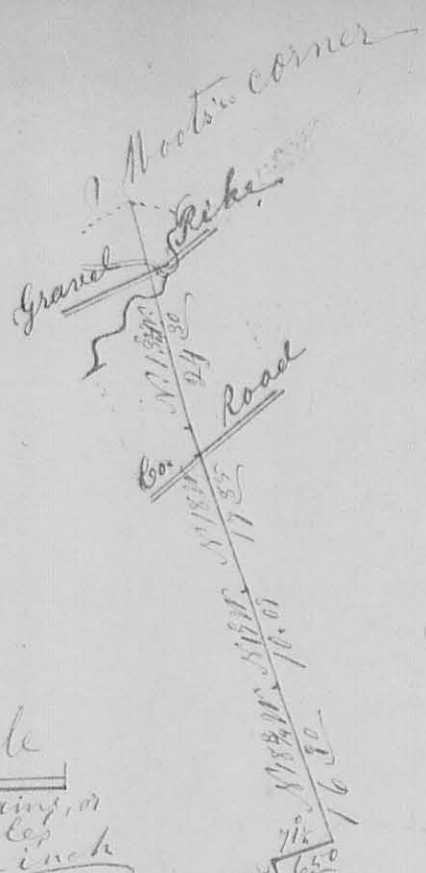
Survey No. 803

1 May, 1858

Scale  
20 chains, or  
80 poles  
to an inch

Follow line

N 71° E  
40.85 chains  
Beginning



Surveyor's Office Bellefontaine Ohio  
December 6<sup>th</sup> A.D. 1858

The above plat is a representation of seven lines of A. Sanders, Piatt, land, in Mouse Township of Logan County, State of Ohio; being on the water of Machehack in Win. M. Surveys Nos. 4492 and 4479, as surveyed by me, G. C. Moore, the County Surveyor of the said County of Logan, on the 26 day of November A.D. 1858, at the request of said A. Sanders Piatt, for the purpose of establishing said lines, and the corners therewith connected; which I did in the following

manner; to wit:

Beginning at a small stake  
& small stone in the Ludlow line,  
at Adam Miller's N. W. corner, run  
thence N. 71° E. 40<sup>85</sup>/<sub>100</sub> chains (or = 163<sup>70</sup>/<sub>100</sub> poles)  
crossing a road at 30<sup>25</sup>/<sub>100</sub> chains; to a  
stone, from which a Cherry 17 In. Dia.  
bear N. 56<sup>1</sup>/<sub>4</sub> W. 20 links;

Thence N. 19<sup>1</sup>/<sub>2</sub> W. 4.2<sup>0</sup>/<sub>100</sub> chains to a  
Black Walnut stump; thence N. 71<sup>0</sup>/<sub>2</sub> E.  
6.5<sup>0</sup>/<sub>100</sub> chains to a stone, from which  
a Hickory 10 In. Dia. bear N. 34 W. 4 links  
& a Hickory 9 In. Dia. S. 34 E. 5 links;  
thence N. 18<sup>0</sup>/<sub>4</sub> W. 16.8<sup>0</sup>/<sub>100</sub> chains to a stone;  
thence N. 17<sup>1</sup>/<sub>4</sub> W. 10.9<sup>0</sup>/<sub>100</sub> chains to a stone  
from which a red Oak 30 In. Dia.  
bear N. 41 W. 15 links; thence N. 13<sup>0</sup>/<sub>4</sub> W.  
17.8<sup>5</sup>/<sub>100</sub> chains to a stone; passing a  
stone in a Co. Road at 15.05 chains;  
thence N. 13<sup>1</sup>/<sub>4</sub> W. passing a stone at  
Lewis Seaman's corner at 11<sup>24</sup>/<sub>100</sub> chains;  
crossing Mackachack at 14<sup>50</sup>/<sub>100</sub> chains;  
crossing the Gravel pike; and  
crossing Piatt's mill race at 18 chains  
to a stone at Moots' corner, from  
which a Bur Oak 14 In. Dia. bear  
N. 15<sup>0</sup>/<sub>2</sub> E. 13 links, and a Hollow Hickory  
20 In. Dia. S. 15<sup>0</sup>/<sub>2</sub> E. 13 links - - -

Done in presence of, A Sander, Piatt,  
Lewis Seaman  
and Henry Foresythe &  
Peter King } Chain Men

I hereby certify the foregoing plat  
and report to be correct -

Henry C. Moore Co. Surveyor & Est. Co.