

My 29 1827

C. H. Austin
 James B. Dillon
 Joseph S. Carl
 Robt. Cullana
 W. J. Whitcraft
 J. H. Garwood

my 30th

I proceeded to take Evidence & make survey as follows
 having first found the Beginning Corner described in John and
 Mary Sharp's Deed of Conveyance to the Party Meeting (as
 "Beginning at a Sugar tree by a Spring about 30 poles South-
 East from John Sharp's dwelling house" but the point
 where ~~the~~ ^{some} Sugar tree stood being ascertained, John Sharp Esq
 Jesse Warner, Samuel Warner, John Marmen, and J. Sharp
 on behalf of Applicants, being first duly qualified,
 testified as follows

1 Question of Applicants to John Sharp Senior

is near which ~~the~~

Do you know where the Spring
 is near which the Sugar tree stood at the Beginning Corner of
 the Meeting house lot

Answer, About two feet from three Buck Eyes from 1 Stamp

2 Question of Same, Do you know where the Sugar tree stood
 which was marked as a Corner

Answer, I Do not

3 Question of Same, Did you Ever see any marked trees or
 bushes near the Spring

Answer, I think I have seen some bushes about ten
 feet S 15 W from the three Buck Eyes marked

4 Question of Same, Was the Spring on the Meeting house
 lot, Answer, I told them to take it in

1 Question

John ^{his} Sharp
 Mark

1 Question of Applicants to Jesse Warner

Do you know where the Spring is near which a Sugar tree
 stood at the Beginning Corner of the Meeting house lot

Answer, I think about ten feet West from the three
 Buck Eyes from one Stamp

2 Question of Same, Did you Ever see the Sugar tree
 which was marked as a Corner near the Spring and
 if so where and it stand

3 Question, Did you ever see a Sugar tree near the Spring ~~and if so~~ which was shown to you as a corner and if so where did it stand

Answer, I saw a Sugar tree about 6 poles from the three Buck Eyes in a west course

4 Question of Same, How long since it was shown to you and by whom was it shown to you?

Answer About 30 years ago it was shown to me by John and Gold Curt as their corner of the meeting house lot
Jesse Warner

1 Question of Applicants to Saml Warner

Do you know where the Spring is near which the Sugar tree at the corner of the meeting house lot

Answer I suppose it to be at or near the three Buck ^{Eyes}

2 Question of Same, Did you ever see a Sugar tree marked as a corner near the Spring and if so where was it

Answer, I believe I have seen a Sugar tree about 6 poles from the three Buck Eyes in a western direction

3 Question of Same, Did you ever hear it spoken of as a corner tree and if so of whom, Answer, I never did

This deposition was requested to be signed

1 Question of Applicants to John Warner

Did you ever see the Sugar tree which was marked as a corner of the meeting house lot near the Spring and if so where was it.

Answer, I was not present when the corners were made but I have seen it frequently and think it stood about 4 poles from the Buck Eyes in a western direction

2 Question of Same, Do you know where the Coal house used by the friends formerly stood and if so where was it

Answer, The Door in the East End of the house stood about 3 poles or links from the Buck Eyes,

3 Question of Same, About what time was the Coal house built, Was it intended to be on the meeting house lot, And were the lines and corner trees standing when it was built,

Answer, In about 1810 or 1811, And was intended to be
 on the meeting house lot - And I think the lines and corner
 trees were at that time standing

1 Question An Cross Examination to Same

Do you know that the Coal house was on the lot

Answer, Only by hearsay J Am Manner

1 Question to Jas Sharp & Applicants

Do you know where the Sugar tree
 Corner was near the Spring, And if so where was it.

Answer, I think it was West of the tree Buck Eyes
 of Sharp

Jas C. being first duly sworn and asked if
 Jas S. Curl says in answer to 1 Question, Did you
 ever see a Beginning Corner to the meeting house lot, &
 if so state where it stood

Answer, I think it stood about 2 poles 14 links
 from the Buck Eyes in a North direction

2 Question by Same, Did the tree stand where a stone
 is now planted

Answer, Thereabouts as near as I can recollect,

3 Question, Was it marked for a corner of the meeting
 house lot, Answer, It was

4 Question, At what time did you see the marks
 on this tree, Answer, About 1817

5 Question, Do you know any thing about this cor-
 ner since that time

Answer, In Company with Jas S. Curl I bought
 to the stone above mentioned from Jas Curl Sr
 And arrived from this corner

6 Question by Same, Did the Sugar at that time
 stand where the stone now stands,

Answer, As near as I can recollect, it does And
 I set by fence to it

Cross Examined by Applicants

1 Question, When was it that you fenced to this cor-
 ner - Answer, In about 1828

2 Question of Same, How long did the fence remain there, Answer, Until I removed to Green Co

3 Question of Same, Was the stone put there while the fence stood, Answer, I do not know

4 Question of Same, Was there a Corner of your field or land ~~or was it any~~ where the stone stands, or was it only in the line of your land, Answer, It was at the Corner,

5 Question of Same, Is there any land marks now standing, to show that the stone now stands where your man your Corner, And if so what is it

Answer, The track ran there or four feet West of the place where the stone now stands,

6 Question of Same, Have you since sold and conveyed the land and if so to whom,

Answer, I have and it has been conveyed to Joseph S Curl by Joseph Curl Sr

7 Question of Same, Are you a son of Joseph Curl Sr Answer, I am

8 Question of Same, In the area from Joseph Curl Sr to Joseph Curl Jr was this Corner of the Meeting house lot described as one of the Corners, Answer, It was

9 Question of Same, Did you receive any property, either real or personal from the Estate of Joseph Curl Sr, and if so how much,

Answer, I am at my Mother's death to receive an Equal share of which I have already received a part

Goel Curl

Exceptions taken to the Goel Curl's testimony of Applicant Charles Curl being first and only qualified on behalf of Joseph S Curl says in Answer to 1 Question What do you know about the Meeting house lot Answer, I recollect that a Sugar Supposia to be the Corner stood at or near the place where a stone now stands and was the Corner from which Jas S Curl and Goel Curl divided their land

2 Question by Same, Was the Sugar tree marked as a corner, Answer, I Can not tell,

~~3 Question by Same, Cross Examined by Applicant's~~

Witness, When and by whom was the stump planted
Answer, Sometime during winter of 1826, L. J.

2 Question by Same Was there any fence or other land marks there when the stump was planted

Answer, I do not think there was,

3 Question by Same, What has become of the Sugar tree which you say formerly stood there, and how long has it been gone

Answer, It blew up and is decayed and rotted away about 14 or 15 years ago

4 Question by Same, Are you a son of Joseph Carl yes
And how old are you, Answer, I am and am in my 28 year

Charles Carl,

In accordance with the evidence which seemed to correspond, to the greatest extent, with the conveyance for this lot, and particularly with Jesse Warners and John Marman's evidence, the latter of whom pointed out a place as being in very near the place where the Sugar stood, which place proved by course and distance to be S 59 E 30 poles from the house formerly occupied by John Sharp and to be N 77 W 4 poles 20 links from 3 Buck Eyes from one stump or rather root and also in consequence of this point being the following courses and distances from a large lime stem now standing as the South East Corner of said meeting house lot to wit, S 49 W 14 poles, then N 41 W 16 poles 17 links; the above mentioned large lime stem being placed at a point which was ascertained to be the South East Corner of the lot by the testimony of witnesses hereinafter recited, and the courses and distances from the lime stem to the place pointed out by John Marman being the calls of the deed for the lot reversed I planted a lime stem as the Beginning Corner of the

81

Meeting house lot 30 poles S 59° E from the house
formerly occupied by Jam Sharp, and 4 poles 22
links or 77 1/2 W from the Buck Eye from one end
and ran S 41° E 16 poles 17 links to a point in Ant-
trims line, where planted stone, witnessed by White
Oak 2 1/2 ft D, N 45° E 4 poles 1 link from stone
then N 29° E 14 poles to a point in Anttrims line, at
which place the following testimony was taken,

M Evans being first duly sworn Said in Answer
to 1 Question of Applicants, Do you know
where the stone called for in Anttrims line at the
S E or E Corner of the Meeting house lot was originally
made And if so where was it

Answer, I think there never was a stone planted, but
I think it was not more than one rod from where
the 14 poles come to from the first Corner called
for in Anttrims line, and would think as likely to
be exactly at the ~~same~~ distance as any other way from
it.

2 Question of Same, What means saw you of knowing
where this Corner was made

Answer, By seeing Jasua Garver a Surveyor when it
was first run off for the purpose of School house
lot, when Carried by Jam Sharp for that purpose

M Evans

Jasua Sharp having been sworn in Answer to
1 Question of Applicants, Do you know where the
South East or E Corner of the Meeting house lot in
Anttrims line was originally made And if so when was it
Answer, I think the distance of 14 poles from the first
Corner named in Anttrims line is not 5 feet from the
place where the Corner was, and I am enabled to come
to this Conclusion by the old rowa marks, and that it is
2 poles S 2° E from a Buck 16 D - Jasua Sharp

Joseph Glascock being first sworn on part of Applicants, 1 Question, State Whether Joseph Curl for ever staked you the East or S E Corner of the Meeting house lot And if so when was it

Answer, Joseph Curl and Abraham B Dillon staked me the S E Corner of the Meeting house lot - And I think it was about 2 poles S 2 E from a Buck 16 2 D, which Conclusion I came to from the position large black stump immediately across the track of the road from where the Corner was pointed out to me

2 Question by Same, Who owned the land adjoining this Corner at the time it was pointed out to you

Answer, The Meeting house lot lay on one side, Mr Dillon owned on the other, And Mr J S Curl owned the farm adjoining the Meeting house lot on the North West,

3 Question by Same, Where you ever staked Curls N E Corner between him and land owned by Dillon And if so by whom and when is it

Answer, The Corner was staked to me by Jas S Curl and A B Dillon, And a stone now near to the remains of a bar post to be the Corner,

Cross Examination of J S Curl,

1 Question, When did I stake this Corner
Answer by Same, When the land was run off ~~to me~~ by A B Dillon to me
Joseph Glascock

In accordance with this testimony I planted a large lime stump for the Corner witness'd by a Buck 15 2 D, or 3 3/4 W 53 links from stump, then ran N 3 1/2 W 15 poles 17 links to a point claimed by Applicants to be the Corner, and which was believed to be the Corner from the Correspondance of Courses and distances rather than a point referred to by the testimony following to wit

Jo S Curl on behalf of J S Curl

1 Question by J S Curl, State where the North East Corner of the Meeting house lot is, And when your Corner

at the same place was
Answer, I think the Iron-wood stood about 3 poles
18 links East of the present track of the road, and on
the bank of Channel of branch as then run

2 Question by Same, How did you know this to be
the Corner of the Meeting House lot

Answer, By my father, Isaac Dillan looking at the
Corner when the road was first run and Mr Dillan
saying that the road would be on the Meeting House
ground, and by seeing it measured from the Corner to
the Corner at the Spring,

3 Question by Same, What was the distance to the Spring
Answer, about 25 or 26 poles

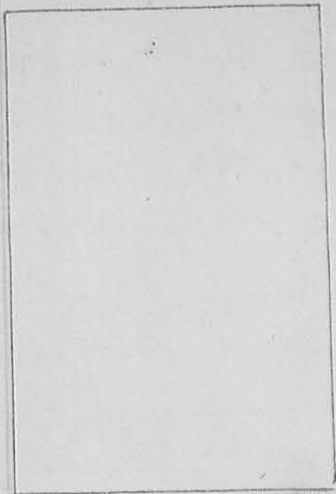
Cross Examination of applicants

1 Question, Was there any marked trees at the
Corner the first time you saw it or any at any
after time,

Answer, Not the first time I saw it but I think
I did after, Joel Curb

According to the Course and distance from the last
stone set, I established the Corner in the West side of
side of the road, but as it would likely be removed by
improvements of the road did not plant any stone
but took witnesses as follows; to wit, a large stone
in natural position, 5 poles 1 link S 1/4 W from
Corner and a lime stone 12 1/2 links S 87 1/2 W from
Corner, then ran S 81 1/2 W 25 3/4 poles to the Begin-
ing containing 17 8/10 acres, The last Course and
distance given from calculation, Corner stone
planted in presence of Jesse Hanna, Isaac Sparks
David Wilkiss, Thomas Dillan, Gas S Curb, and
Smith Seaman
John Clingerman }
John Airston } Clerks
M Hartman
C S Lee

84
 Survey
 590



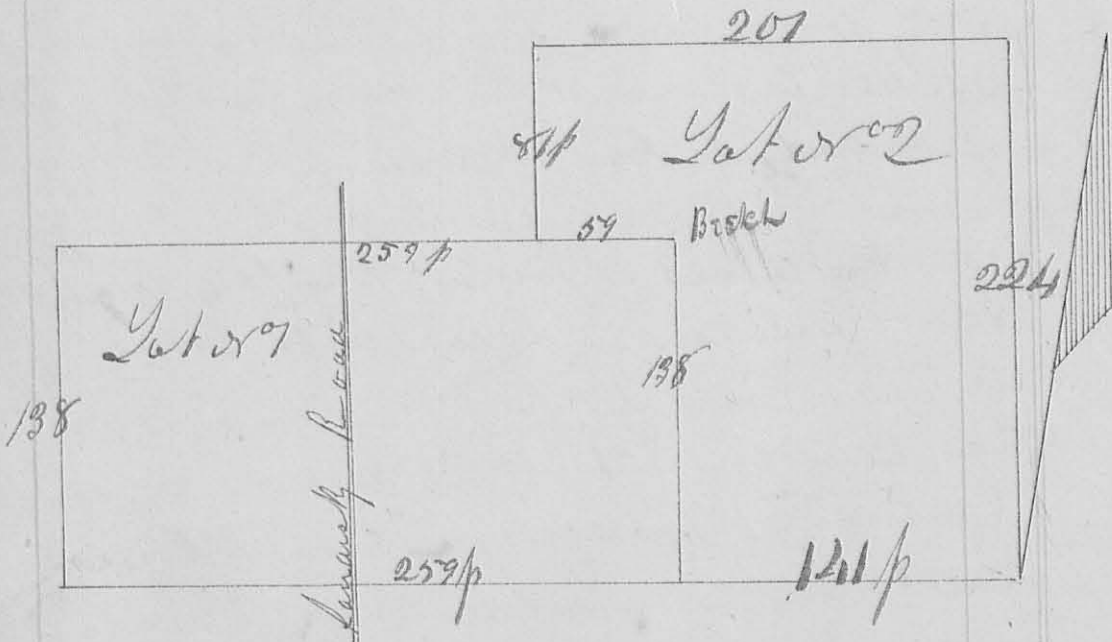
Survey July 26 1827 for
 Jacob Boreas the following
 lot of land being part of
 Survey no Beginning
 at a grey ash & Iron woods
 Corner to Des Gaffield & S. Duce
 & run N 12 W 117 poles to blue
 Ash Corner to Jas Bull, S. Duce
 and Jacob Kerns in a County road
 then S 78 W 66 2/10 poles to a stake

in said road then S 12 E 107 poles to a Sugar tree
 & a Buck in Jacob Boreas South line then with
 said line N 78 E 66 2/10 poles to the Beginning Cor
 taining 211 66/100 Acres

Jas Bull
 Saml Duce

S. J. Marlison
 C. S. L. Co. C

Survey
 591



25

Surveyed Aug 28th 1857 for John Ann Jacob
 Gabriel the following described lands; by
 Surveys & Ann Beginning at
 at a blue oak, two Sugars and a beech (ash
 gone) corner to John Harrison's Porterfields
 land and run N 10° 10' W 138 poles to a Sugar
 and a Beech, then N 80° E 210 poles to 2 Su-
 gars and a Beech, then N 10° W 84 poles to 2 Sugars
 in the line of McArthur's Survey or 10637
 corner to Evans Survey or 12536, then
 N 80° E 201 poles to 3 Beech & a Sugar then S 11° E
 221 poles to N E corner of Porterfields land
 then S 80° W 201 poles to the Beginning
 containing 448 Acres
 See plat for size of Lots

J. Harrison
 C. Geo. O.

Survey
 592

8529



V

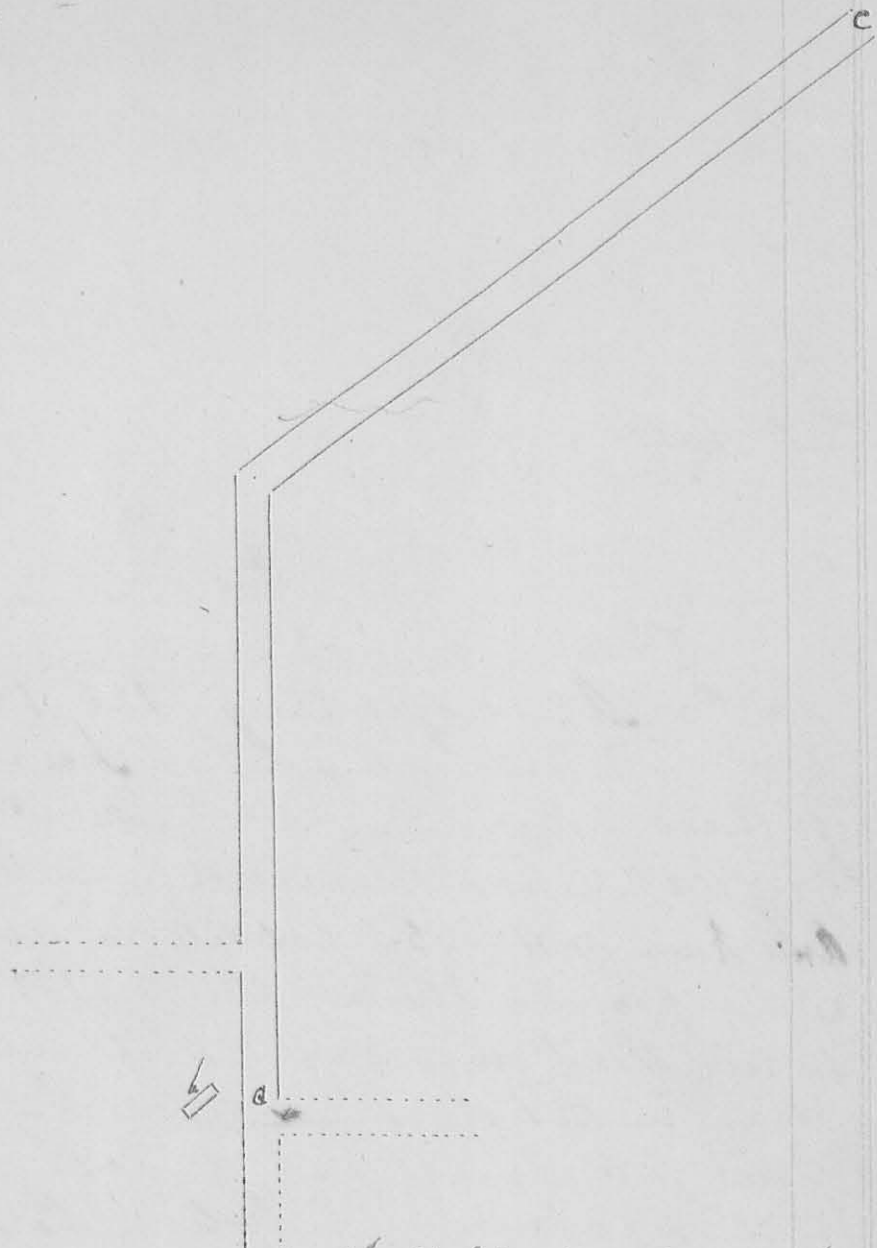
Surveyed Aug 30th 1847 for Jas Richards
 and Above as the following described
 lands being part of Survey No 9902

Lot No 1, Beginning at a Stake in Ch-
 ake ~~road~~ and Lewis town road (planted stake)
 at the S W corner of D Garratts land &
 run with Garratts line N 12° W 200 poles to a
 stake (W Oak 20° S 2 h & 25 links, dist; &
 W Oak 18, 9 D, S 61 W, 2 1/2 h links, dist.) then S 79 W
 80 poles to two grey oak, 6 1/2 D, then S 12 E
 200 poles to a Stake in Lewis town road
 then with said road N 78 E to the Begin-
 ing containing 100 Acres

Lot No 2, Beginning at a Stake in
 Lewis town road South West corner to Lot
 No 1, and run with the West line thereof N 12° W
 200 poles to a Stake in Lewis town road then
 with said road N 78 E 80 poles to two grey
 oak 6 1/2 D, then S 78 W 80 poles to a Stake then
 S 12 E 200 poles to a Stake in Lewis town
 road then with said road N 78 E 80 poles
 to the Beginning containing 100 Acres

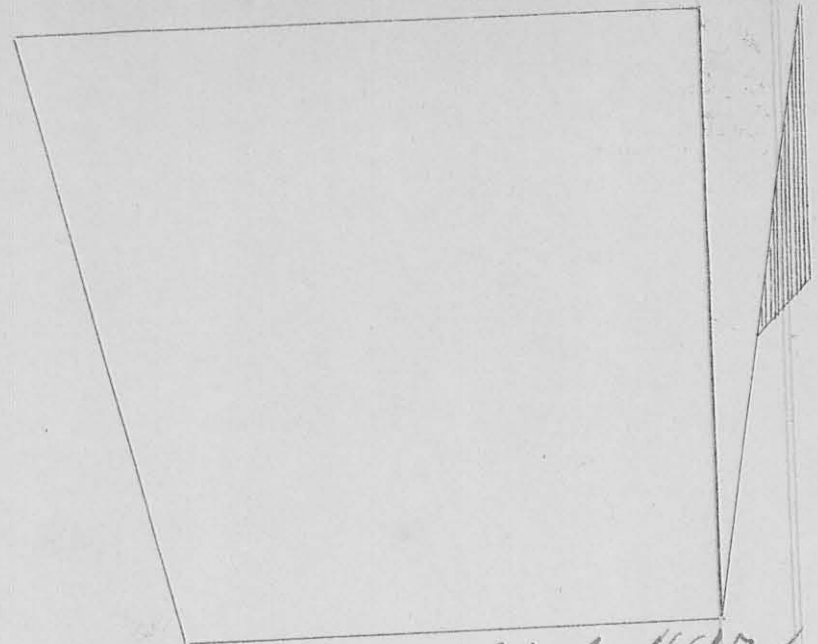
Jason Thompson J P Harrison
 Jacob Barira 3rd C S Seal

Survey
593



Surveyed Aug 10th 1847 for J. M. Pittman & Son
at Court House as follows; Beginning at a
point in the Loganville road and Lima road
opposite Mr. R. Patrick's house (now Plummer's)
and run N 66 poles then N 54 E 78 poles
to a point 1/2 pole, S 3 E from the place
^{which} Cherry ~~stone~~ said was, about the place
where the angle ~~at~~ at the end of distance
in said road was made when it was laid
out, this plot was made at time of survey by J. Harrison
but laid until after were received. OS L. C.

85.
Survey
594

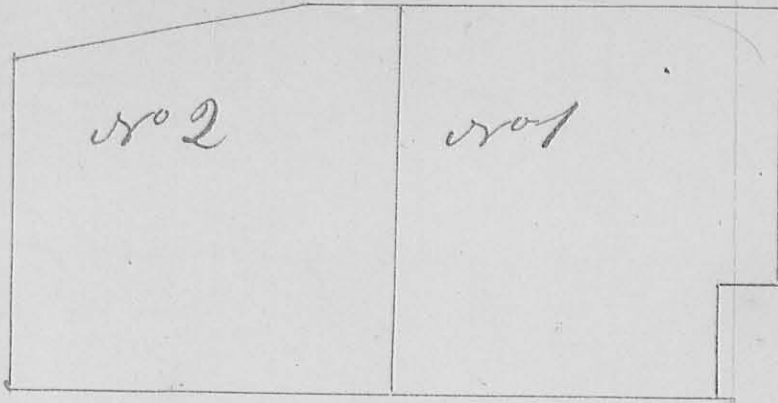


Surveyed Aug 31st 1847 for
Fleming a part of Survey 17th as
follows; Beginning at 2 small Hickories, a
Grey Ash, and a Box Oak (and Hickory gum)
Acres Run, or N 11 W 126 poles to an Ash and a White
Elm (planted stone) then S 79 W 125 poles
to two Hickories and a White Oak (planted
stone) in the Roberts line then S 26 1/2 E 130
poles to a small Ash, W Oak and Hickory
then N 78 1/2 E 111 1/2 poles to the Beginning
Containing 100⁹⁵/₁₀₀ Acres

J. Harrison
C. S. Lee

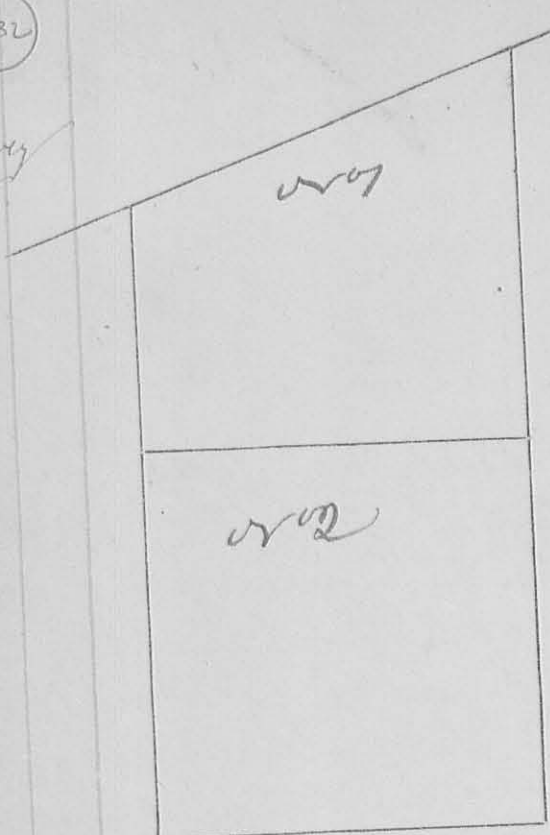
Survey
595

3530



Surveyed Sept 1st 1847 for James Stewart
 and David Uder, a part of Sect 13, 32, R 15
 T 4 N, Beg at the N E Corner of said Sec-
 tion (W Oak, 16 1/2 D, S 88 E 28 links dist; And W Oak
 20 1/2 D, N 58 1/2 W 210 links dist) And run S 1 1/2 W
 119 poles to a stake in J Laurences field
 then N 88 1/2 W 26 poles to a stake (W Oak 22
 1/2 D, S 50 1/4 W 32 links dist) then S 1 1/2 W 2 1/3 poles
 to a stake South of Spring branch, then N 88 1/2 W
 130 1/2 poles to stake (W Oak 22 1/2 D, N 40 1/4 W 25 links)
 then N 1 1/2 E 161 poles to stake (Hickory 18 1/2 D,
 S 22 E 15 links) then S 88 1/2 E 162 1/2 poles to
 the Beginning containing 156 5/100 Acres
 Lot No 2 Beginning at the N W Corner
 of No 1 (Hickory 18 1/2 D, S 22 E 15 links) And
 run N 88 W 35 1/2 poles to a stake in Greenwille
 treaty line then with said line S 80 W 132 poles
 to the N W Corner of said Section in Greenwille
 treaty line then S 1 1/2 W 38 poles to Genistons
 road, 136 poles to a stake in Court road
 (W Oak 18 1/2 D, N 88 1/4 E 3 1/2 14 links) then S 88 1/2 E
 162 1/2 poles to stake W Oak 22 1/2 D N 40 1/4 W
 26 links, then N 1 1/2 E 166 poles to the Beg-
 ining containing 153 96/100 Acres
 Elias Idampson }
 John Miller } Chas
 J. S. L. Co

Survey
596

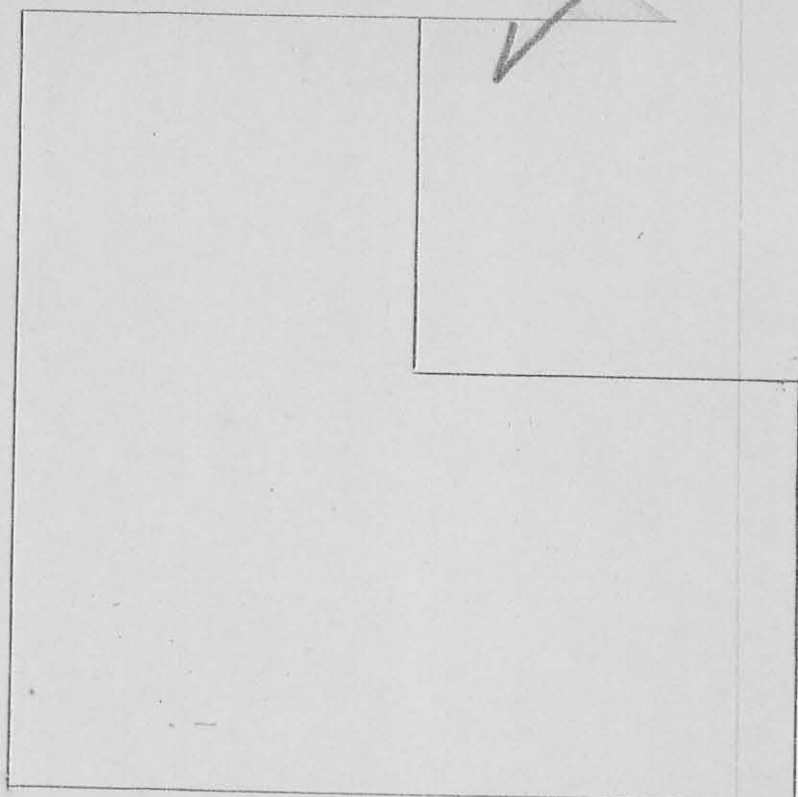


Surveyed and subdivided
Sept 12 1847 for James
Miller and Fleming
the East half of Section
19, 22, R 15. As follows
Set v07 Beginning at the
N W corner of said Section
and run S 1/2 W 136 poles
to a stake in Centre of
Candy-roun (W Oak 88 3/4
E 3 poles 14 links) then
88 1/2 W 162 1/2 poles to a
stake (Jack Oak 2 1/2 D, N
2 E, 31 links, and Jack Oak
6 1/2 D, 566 E 36 links) then

N 1/2 E 10 1/2 poles to stake in Greenilly
treaty line (W Oak 12 1/2 D 528 1/2 E 28 links)
then N 80 E 164 poles to the Beginning
Containing 120 00/100 Acres
Set v02, Beginning at the South East
Corner of said Section (W Oak 12 1/2 D, S 1/2 W
12 links, and W Oak, 16 1/2 D N 6 1/2 E 31 links
this last tree down but stump found) and run
N 88 1/2 W 162 1/2 poles to stake (W Oak, 18 1/2 D
N 67 1/2 E 37 links) then N 1/2 E 160 poles to
a stake (Jack Oak 2 1/2 D, N 2 E 31 links
and Jack Oak 6 1/2 D, 566 E 36 links) then S
88 1/2 E 162 1/2 poles to stake in Candy-
roun (W Oak 18 1/2 D N 88 3/4 E 3 poles 14 links
then with said road S 1/2 E 160 poles to the
Beginning Containing 162 1/2 Acres
Elias Thompson
Saml Hurst
A Harrison
C S Geo D

8533

Survey
596



Surveyed Sept 1st 1847 for Robt Patterson
 Administrator of A & S Spencers Estate a part
 of the N E q of Sect 15, 23, R 14, as follows
 Beginning at a stone in Sect line 80 poles or 88 1/2
 W from N E Corner of said Section, and run
 N 88 1/2 W 163 1/2 poles to a Stake (Hickory 14 1/2
 S 35 W 10 links, W Oak 12 1/2, S 75 E, 35 links)
 then S 1 1/2 W 138 poles to a Stake, (W Oak 20 1/2,
 S 1 1/2 W 50 links) then S 88 1/2 E 95 poles to
 West edge of prairie, 163 1/2 poles to a Stake
 in prairie then N 1/2 E 86 poles to Stake
 in prairie then N 88 1/2 W 62 1/2 poles to West
 edge of prairie 80 poles to a Stake in field
 then N 1/2 E 72 poles to the Beginning con-
 taining 125 45/100 Acres

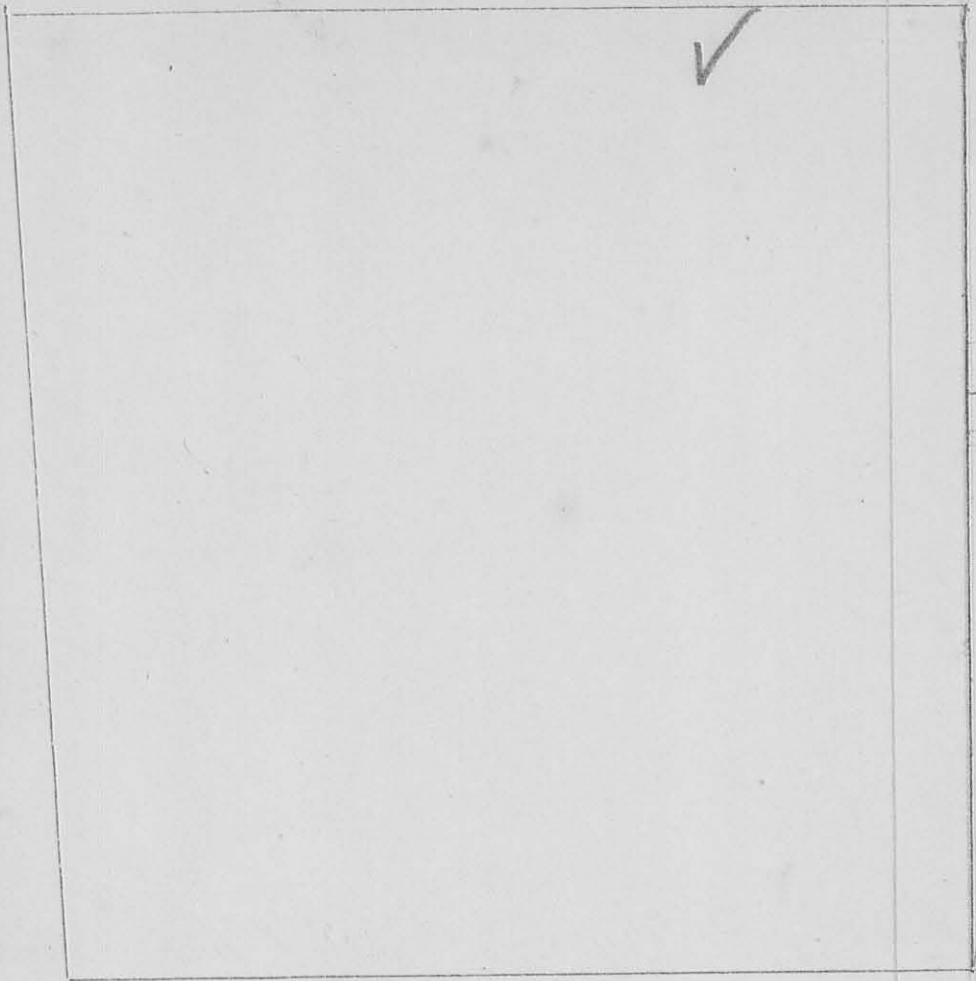
J D Kinn
 A Bossart

A Harrison
 C S Yool

92

8534

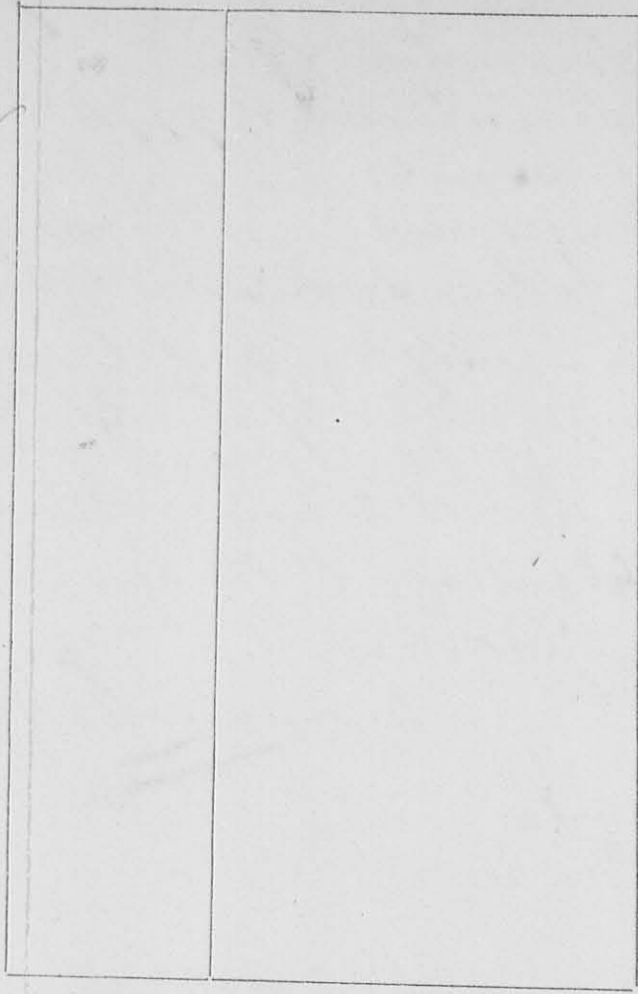
Survey
5-97



Surveyed Sept 4th 1847 for John Kautzman
 Survey No 9888. As follows;
 Beginning at a blue oak, Sugar tree and Elm
 (elm gone) in Greenville tract line at the South
 East Corner of Jamison's and others Survey 9887
 and run with said tract line N 80° E Crossing
 one branch at 30 poles one at 106 poles and
 one at 178 poles 380 poles to 2 Buck (both
 gone then N 10° W 106 poles to branch 171 poles
 to Mill Creek, 340 poles to Spring branch
 210 poles to Stone then, S 80° W 200 poles
 to the two Sugar trees and a buck N 70° W
 Corner of said Jamison's Survey then
 S E 440 poles to the Beginning
 Containing 976^{7/10} Acres
 J Kautzman 3
 Geo Kautzman 3
 A. Harrison

Survey
598

8535



Surveyed Sept 9th 1847 for Smith and Robt Edmiston a part of Survey No 9902, as follows:
 Lot No 1 Beginning at a Stake in R Edmiston's East line and Run N 80 E Cross Cherokee road at 27 poles 23 poles to a stake then S 10 E 20 1/4 poles to a Stake in Edmiston road then S 80 W 43 poles to a Stake then N 10 W 200 1/4 poles to the Beginning containing 53 95/100 Acres

Lot No 2, Beginning at a Hickory, Dog-wood and Iron-wood (Dog-wood & Iron-wood) N 11 E 66 poles to Cherokee Creek, 202 poles Stake in Edmiston road then with said road S 80 W 88 1/2 poles to a Stake then N 10 W 201 poles to a Stake in North line of said Survey then with said Survey N 80 W 87 poles to the Beginning containing 110 21/100 Acres

A. Harrison
 C. Lee C

94

8536

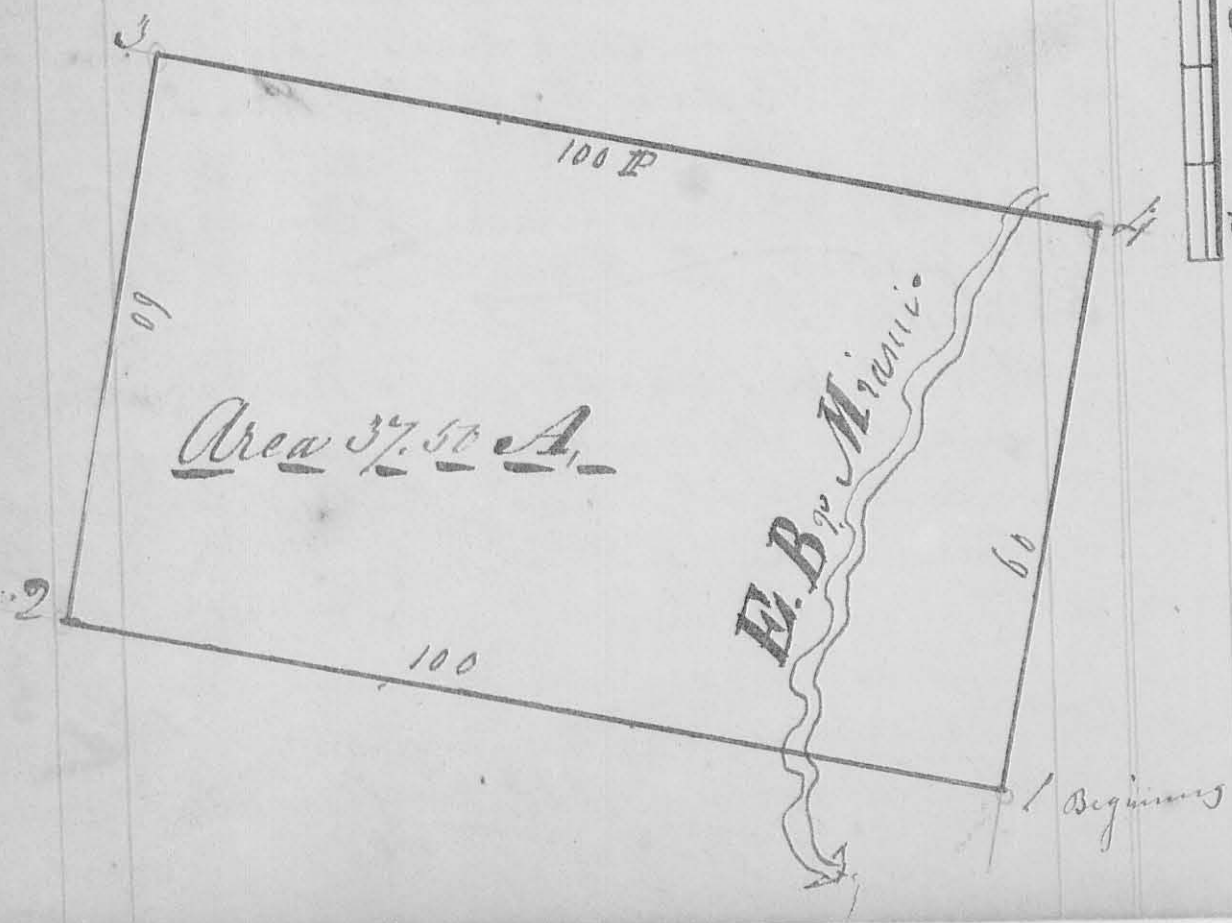
Surveyed Jan. 8th. 1848 for John Guin-
 of Rusherick Township La. County Ohio
 part of Military survey N^o 9976 as
 follows to wit, Beginning at an ash-
 and Beech (Ash down) Thence S 11 E.
 100 P. 46 Links to two sugars and Beech-
 (all down). Thence S 79° N. 60 P. to N. Oak-
 48 Inches Diameter West 37 Links Thence
 N 11 W. 100 P. 6 Links to a crossing E. Br.
 Survey of Miami river at 20 poles. to a stake
 N 59° E. Thence N 79° E. 60 poles to the beginning
 containing 37.50 Acres.

O. Hayes ^{Junr} Ld. Ohio

Jos. Hull
 Peter Bowers Chm. Crs.
 Michael Guin Marker.

True Mer.

Scale 20 P. to an Iⁿ.

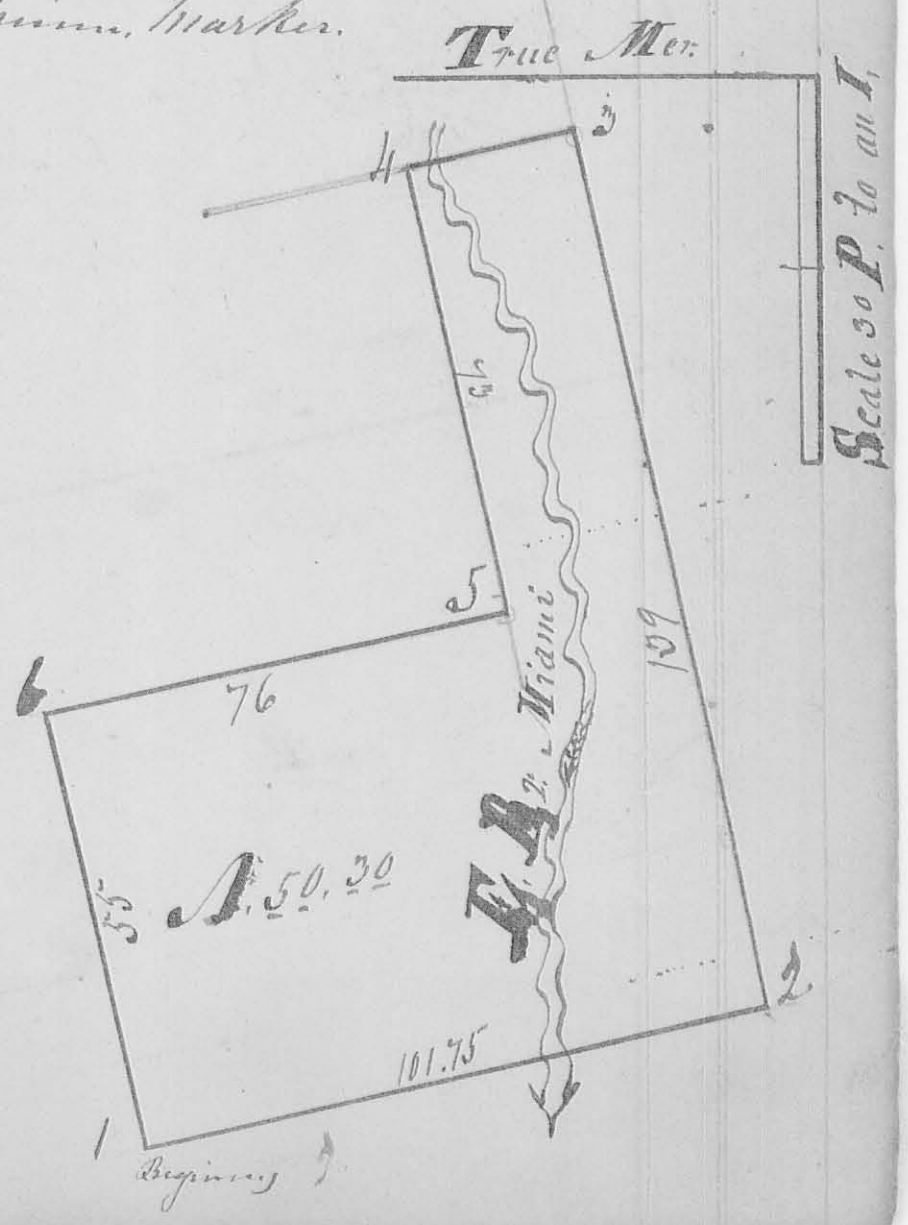


(8536)

Surveyed Jan^y 8th 1848 for Charles Quinn
 part of Military Survey No 9976 on the
 waters of the G. Miami in Rensselaer Co.
 Logan County Ohio as follows to wit
 Beginning at a Beech stump South of
 thence S 11° E 101.75 Poles Beech 16 in. diam 48 1/2
 48 Links dist. thence N 79° E 139 P. N. Oak 48
 in. diam. West 37 1/2 thence N 11° N. 26 Poles Stake
 thence S 79° W 73 Poles Stake in field
 thence N 20° W 76 Poles Sugar 16 in. diam.
 N 37 1/2° E 30 Links thence S 79° N. 55 poles
 to Beginning containing 50.30 Acre

John Hull & Charles
 Peter Powers Ch. Caris
 Mich^l Quinn, Marker. Charles Quinn Chio

Survey
No 600



96

8537

Surveyed January 17th 1848 for Ephraim
 Murrell of Rush Creek Tp. Logan county
 on the waters of Rush Creek - part of
 Military Survey No. 13, 446 - as follows
 to wit, Beginning at a stake in the
 road leading from the town of Rush-
 sylvania to Harman county line
 thence S. 12° N. 203 poles to a Hickory &
 Sugar and Elm: thence S 78° E. 113 poles to
 three Beech and a Sugar. S. E. corner
 thence S 11° E. 202 poles to Ironwood & Hickory
 (Hickory down) thence S 78° N. 106 poles to
 the beginning containing one hundred
 and thirty eight acres two Rods and
 thirteen perches - (138 A. 2 R. 13^{ps}) -

James Howard
 John Rawling & Co.

O. Hays Sur. L. C. Ohio

808

Surveyed for Mr. Pollock of Rich-
land Twp. Logan county Ohio on the
20th day of Aug. 1848 part of Military Survey
No 9972 on the waters of the Miami as
follows to wit; Beginning in the east
line of said Survey at 2 Sugar trees and
Buckeye Sugar & Buckeye (acorns) S. E. corner
to Samuel Lyster 80 acres. thence S 78° W
151.5 poles - Beech. thence S 12° E 104.7 poles
to a stake and 2 Beeches in the south line
of said Survey. thence S 79° W 68.7 poles
to an Ash and Ironwood, thence S 12° W
139 poles to 2 Hickories. thence S 78° E 103.5
poles to an Elm ash & Hopelder thence S 12° W
130.75 poles to a stake 6 feet from E. bank
of tail race of Pollock and Johnston mill
thence S 78° E (sup said race) 24 poles to a stake
thence S 80° E 6 poles to an Elm, thence S 30° E
22 poles to a Hackberry thence S 24° E 8 poles
to a white Ash, thence S 42 1/4° E. 8.75 poles
to a Maple, thence S 30 1/2° E. 24 poles to an
Elm. thence S 72° E 40.5 poles to an
thence S 9 1/2° W 4 poles to an Elm
thence S 58 1/2° E 23 poles to a Bur Oak stump
S 11° E 70.75 poles to the beginning containing
One hundred and seventy nine acres and a
half more or less

Milox & ch. ex
J. A. Johnston

O. Hayes Sur. & Co.

Note. In the above survey
I did not run round the
whole tract, Mr Pollock only
wanted one line run which
I did therefore I say "more or
less" and do not consider myself bound as to the
accuracy of the survey except the one line. the other
Bearings and distances were given me by Mr. P. 1848

✓

N^o 603 Surveyed Jan^y 29th 1848
for William Henry Admr. of
the estate of Isaac Rea Sr. decd. late
of Perry Sp. S. County Ohio part of Military
Survey N^o 6232 on the waters of Mill Cr.
as follows to wit Beginning at Sym-
thumps and take thence S 5^W 38 poles to
an Elm. Thence S 38^E 237 poles to a sugar
and two Iron woods. Thence 453^E
63 poles to a planted stone, thence 415^W
17¹/₂ poles to a planted stone Thence 483^W
1510.5 poles to the Beginning containing
150 Acrey Also subdivided said tract be-
tween Saml. N. Costin Job Smith and Geo. W.
Sudduth as follows. gave Costin fifty
acres of the North end of said tract bound-
ed South by a line parallel with the
North line and divided the balance
between Smith and Sudduth by running
a line along the centre of the Bellefontaine
and Franklinton Free Turnpike for
plat and notes see next pages 99 &

101

Levi ^(Seaman) SeamanWm. ^(Morse) Morse Ch. Crs.

C. Hays Sur. & Co.

Cottins begins at the N.W. corner of said tract at a Lym and Beech (both down but stump of Lym still there) thence S 5 N. 38 poles to an Elm thence S 38 E 23 poles to a Stake. Thence S 83 E 154 poles to a stake thence N 15 W 57.0 poles to a planted stone thence N 83 W 150.5 poles to the Beginning containing fifty acres -

Job Smith described as follows - Beginning at Cottins' S.W. corner at a Stake thence S 38 E 101.5 poles to a stake in the centre of the Bellefontaine and Franklinton Free Turnpike. thence along the centre of said road S 67 1/2 E 104 poles to a stake thence N 15 W 25.0 poles to a stone planted thence N 83 W 154.5 poles to the beginning containing ^{43.000} ~~100~~ ^{and 120} ~~acres~~ ^{Perches}

Geo. W. Sudduth is described as follows Beginning at Smith's S.E. corner at the Stake in the aforesaid Bellefontaine and Franklinton Free Turnpike thence S 38 E 112.6 poles to a Sugar and 2 Ironwoods then N 32 E 63 poles to a stone planted and small Beech. thence N 15 W 98 poles to a stake in the centre of the aforesaid Free Turnpike thence along the centre of said Free Turnpike S 67 1/2 W 104 poles to the beginning corner containing 51.84 acres - for plat and so forth see next page - 101 -

No. 604. Surveyed Feb'y 5th. 1848 for
 Isaac N. McBeth 20 acres in the
 South side of the N. R. gr. of Sect. 35 T5 Range
 13 N.R. also 32 Acres and 88 perches off the
 the North side of the S. E. gr. of Sect 34 T5
 R. 13 N.R. as follows "to wit" beginning
 at the N. W. corner of said 20 acre lot
 thence S 89 1/2 E 173 poles to a stone in the
 Springfield and Sandusky Free Turnpike
 thence S 1/2 N 38 poles to a stone at the
 corner of sections 28, 29, 34 and 35, thence
 S 60 1/2 N 93 poles to a stone on the centre
 of the State road leading from West
 Liberty to Quincy thence along the centre
 of said Road N 84 N 91.5 poles to a stone
 thence N 1/2 E 78 1/2 poles to a stone at
 the Beginning containing Seventy two
 acres and 88 Perches -

I. N. McBeth &
 Wm. McBeth Sch. ers -

O. Hayes Sur. L. C.