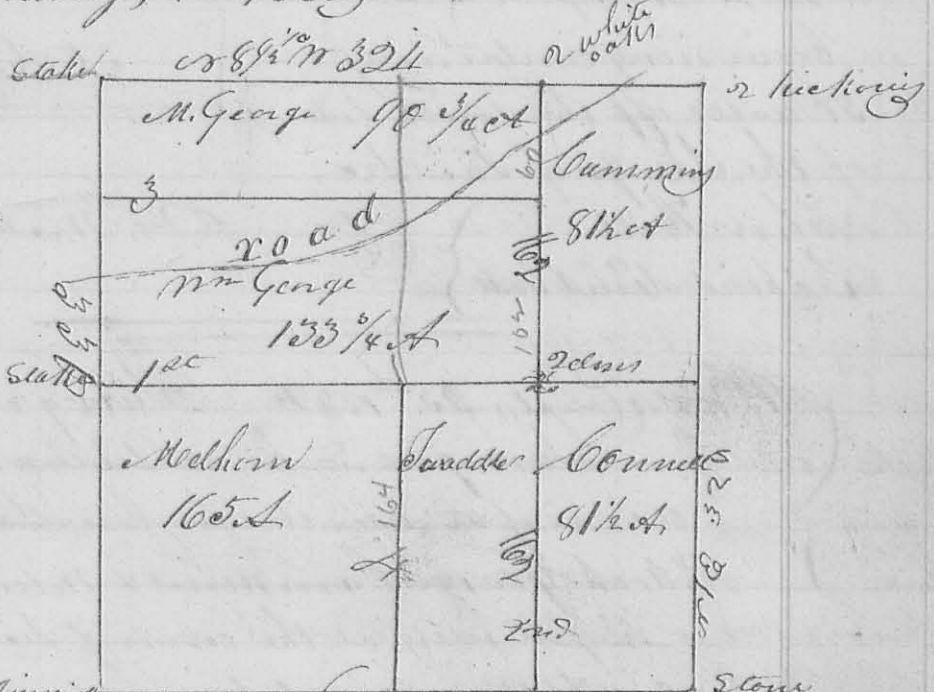


original corner trees are destroyed, thence between
 Sec 22 & 28 N 1° E 324 poles to the corner of Sec 22,
 23, 28 & 29, a hickory 524 N 22 links original bearing
 line standing the other is down, I marked a hick
 ory, or 76° N 21 links - thence between Sec 28 & 29
 or 8 1/2° N 324 poles & opened a road at 44 poles, to corner
 of sec 28, 29, 34 & 35 - the original corner trees are cut
 down, - thence between Sec 28 & 34 (opened the road
 at 102 poles, a branch at 108) 3° 30' poles to the begin
 ning, containing 657 acres -

The 1st
 division line
 begins at a
 stake in the west
 line 165 poles
 from either
 corner thence
 58 3/4° E 322
 poles to the east
 line, a hickory
 586 N 6 links -



The 2nd
 division
 line begins 80 1/2 poles west of the South East corner of the Sec.
 a hickory or 29° E 10 links do 56° N 26 links thence
 or 1° E 162 poles a stake in a pond an elm or 61° E 64 links
 do or 22° E 51 links, continued 324 to the north line, a
 white oak or 75° N 18 links do. 68° E 18 links

The 3rd line begins in the 2nd line 60 poles South of
 the last named corner the white oak or 45° E 12 links do,
 or 36° N 12 links - thence or 89 1/2° N 242 poles to a stake
 in the west line of the sec.

The 4th line begins at the original 90 sec. corner
 in the South 161 poles from either corner thence or 1° E
 164 poles to a white oak or 53° E 13 links do 52, 76 18 links
 the centre of the sec.

Nathan & John George Feb 5
 J. W. McCarmon
 C. S. Cole

9th Mo. Sept. 22nd 1832 Survey n^o 190 152

(8776)

John Taylor n^o 190

Surveyed 50 acres of land for John Taylor
 Beginning at the S.E. corner of Section 30 T 5 R 13
 M.P. a black oak $\text{S } 27^{\circ} \text{ W } 50$ links, a white oak $\text{N } 63^{\circ} \text{ W } 18$ links - thence $\text{N } 59^{\circ} \text{ W}$ with the line between sec^s 29 & 30 164 poles to the 9th sec corner a white oak $\text{N } 33^{\circ} \text{ E } 15$ links - thence $\text{S } 71^{\circ} \text{ E } 47.2$ poles, a kicklog $\text{S } 87^{\circ} \text{ E } 18$ links - thence $\text{S } 89^{\circ} \text{ E } 164$ poles to a stake in the east line of the section, thence with said line $\text{S } 76^{\circ} \text{ W } 49.2$ poles to the beginning containing 50 acres off the south side of the S.E. q^r of said sec, John Will Richard Sims hall



Chas. W. Harmon 1832

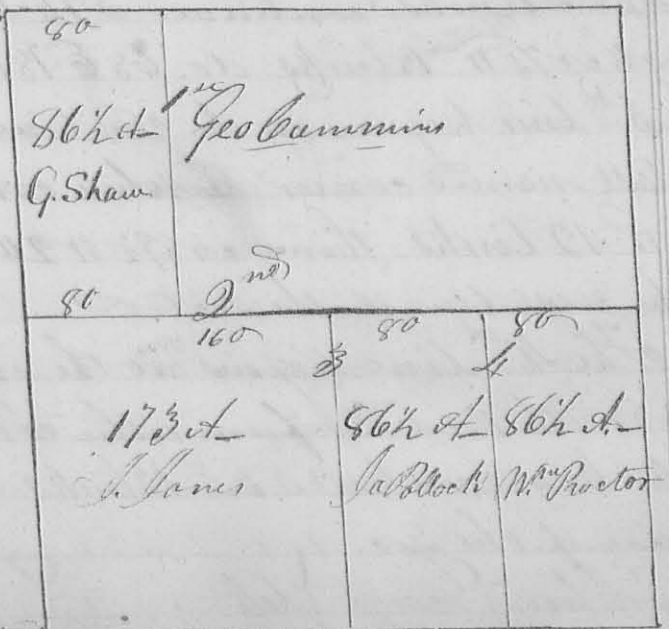
A. Jones
Geo. Pollock
Geo. Camminis
Geo. Shaw
Wm Proctor

9th Mo. Sept. 25th 1832 Survey n^o 191

(8777)

Surveyed and divided section 29 T 5 R 13 M.P. as hereafter described for Jonathan Jones James Pollock George Camminis & William Proctor
 Beginning at the corner of sec^s 29, 30, 35 & 36 in said T 5 R. original bearing trees standing, a kicklog 8 inches diam $\text{N } 76^{\circ} \text{ E } 14$ links a white oak $\text{S } 12^{\circ} \text{ W } 33$ links, thence between sec^s 29 & 30 $\text{S } 89^{\circ} \text{ E}$, crossing a branch at 86 poles, passed the original 9th sec corner at 160 poles a W. Oak $\text{S } 20^{\circ} \text{ W } 8$ links, dist a W. Oak $\text{N } 87^{\circ} \text{ E } 18$ links Beginning

320 poles
 found no corner but at the intersection of the original lines I marked a black oak a W. Oak 17 3/4 links a black oak $\text{N } 72^{\circ} \text{ E } 21$ links



thence with the original line between sec 23 and 29 (S 1/4 W 1/4) 346 poles to the corner between sec 22, 23, 28 & 29 one of the original bearing trees standing a hickory 224 N 22 links the other a hickory is down - thence between sections 28 & 29 N 87 1/2 W 320 poles to the corner of sec 28 29 34 & 35 - the old corner trees are all destroyed here - thence between sec 29 & 35 N 10 E 346 poles to the beginning containing 6 1/2 acres - - The 1st division line begins at a stake in the north line, a bur oak N 38 E 18 links on an elm N 87 1/2 W 24 links thence S 1/4 W 173 poles to a stake in a cornfield -

2nd The 2nd division line begins at the gr. sec. corner between sec 29 & 35 173 poles from either corner a hickory S 40 E 12 links, a hickory N 87 1/2 W 12 links - thence S 89 1/2 E 160 poles a hickory N 71 1/2 W 17 links a hickory S 53 E 29 links in the center of the section - Continued 100 poles further to the gr. sec. corner between 23 & 29 a red oak N 60 W 14 links a black walnut 65 E 21 links -

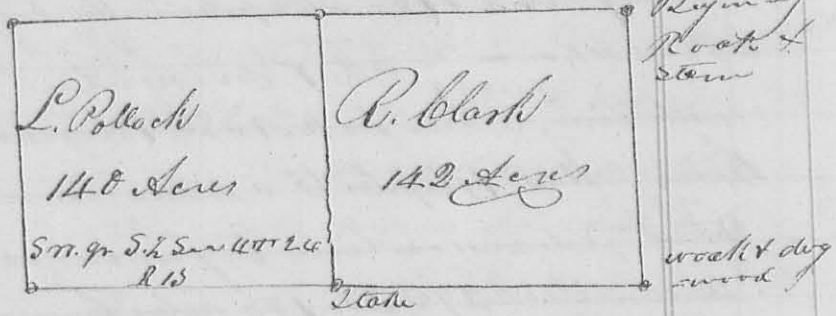
3rd The 3rd division line begins at the gr. sec. corner between sec 28 & 29 100 poles from either corner a white oak N 23 1/2 W 8 links - thence N 10 E 173 poles to the center corner -

4th The 4th line begins in the line between sec 28 & 29 80 poles from the SE corner of the sec. a red oak N 75 W 18 links a red oak S 65 E 18 links - thence N 10 E 173 poles to a black oak N 30 W 7 links a hick S 35 E 12 links in the line through the center of the sec -

James Block }
George Shaw } C. W. Morrison 65 1/2

ymos Sept 26 1832 Surveyor 1920
L. Pollock }
Robert Clark } (278) Surveyed and divided the South half of
sec. 22 & 23 R. 13. N. 1/2 for Layton Pollock & Robert
Clark as follows viz: Beginning at the
gr. sec. corner between sec 18 & 24 original bearing
tree yet standing a red oak N 20 E 150 links - thence
with the line between said sec. south 104 poles to
the corner of sec 17, 18, 23 & 24, original bearing trees
standing a red oak N 38 W 13 links, a dog wood N 85 E 26
links

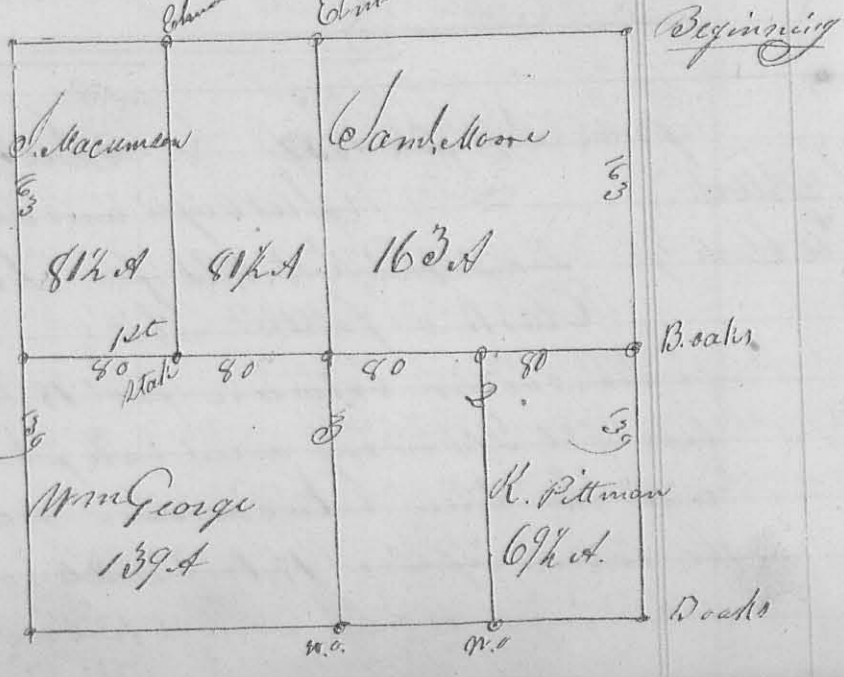
154 - thence between 23 & 24 $88\frac{1}{2}$ W 320 poles, crossing a Spring branch, to the corner of 23, 24, 29, 30 a black oak N 11 E 9 links a black oak N 72 E 21 links - thence N 139 poles to the gr. sec. corner between sec 24 & 30 a black oak N 76 W 12 links, a black oak north 23 links thence $89\frac{1}{2}$ E 320 poles, crossing the spring branch to the beginning con - taining 288 acres -



The division line begins at a stake in the south line of the sec. 160 poles from each corner & runs north 14 1/2 poles to a stake in the north line of the half sec. in the prairie - dividing the half sec. as above marked on the plat
 James Pollock }
 Robert Pittman } L.C. J. W. Macammon L.C.

1833
 Saml. Moore - 9th mo. 27, Sept. 1832
 Robt. Pittman }
 Jno Macammon }
 Wilson George }
 Survey No 193
 Surveyed Sec. 30. T. 4 N. R. 13 W. for Samuel Moore, Robert Pittman, John Macammon & William George as follows - Beginning at a stake in a prairie the original of Secs 24 & 30 in T. 4 N. thence N 88 1/2 W with the original line 320 poles to the corner of Secs 30 & 36 a stone in a prairie - thence 304 poles, passing the origin - al gr. sec. corner between Secs 30 & 36 a bar oak S 22 E

29 links, a hickory East 12 links at 163 poles) 304 poles to the corner of Secs 29, 30, 35 & 36 original bearing trees a hickory N 76 E 14 links, a white oak N 12 W 33 links - thence between 29 & 30 S 89 1/2 E 320 poles passing the original



155
 gr. sec. corner at 160 poles, a W. oak (20 W 8 links
 a white oak N 87° E 28 links) to the corner of Sec 23, 24, 29
 & 30 a black oak N 11° E 9 links, a black oak N 72° E 21 links
 thence between Sec 24 & 30 north 304 poles (passing the
 gr. sec. corner at 139 poles) to the beginning containing
 608 acy -

1st. The 1st division line begins at the original gr. sec.
 corner in the line between Sec 29 & 30 - thence S 89° E at
 80 poles set a stake in a prairie, at 160 poles set a stone in
 a swamp at the centre of the sec., at 240 poles
 set a stone on a hill side, 320 poles to the gr. sec. corner
 between Sec 24 & 30 a black oak N 70° W 12 L. a black
 oak north 23 L -

2nd. The 2nd division line begins at the stone
 on the hill 80 poles west of the gr. sec. corner last named thence
 South 139 poles to a white oak N 83° W 19 L in the south line
 of the sec.

3rd. The 3rd line begins at the original gr. sec. corner
 on the line between Sec 29 & 30 a W. oak - thence north
 passed the stone in the swamp & centre of the sec. at 139 poles
 304 poles to an elm in the north line of this sec 160 E

4th. 25 links - The 4th line begins in the north line of this
 sec 80 poles east of the north west corner thence an elm N 80° W
 12 links thence 163 poles to a stake in a prairie. All of which
 may seen on the plat.

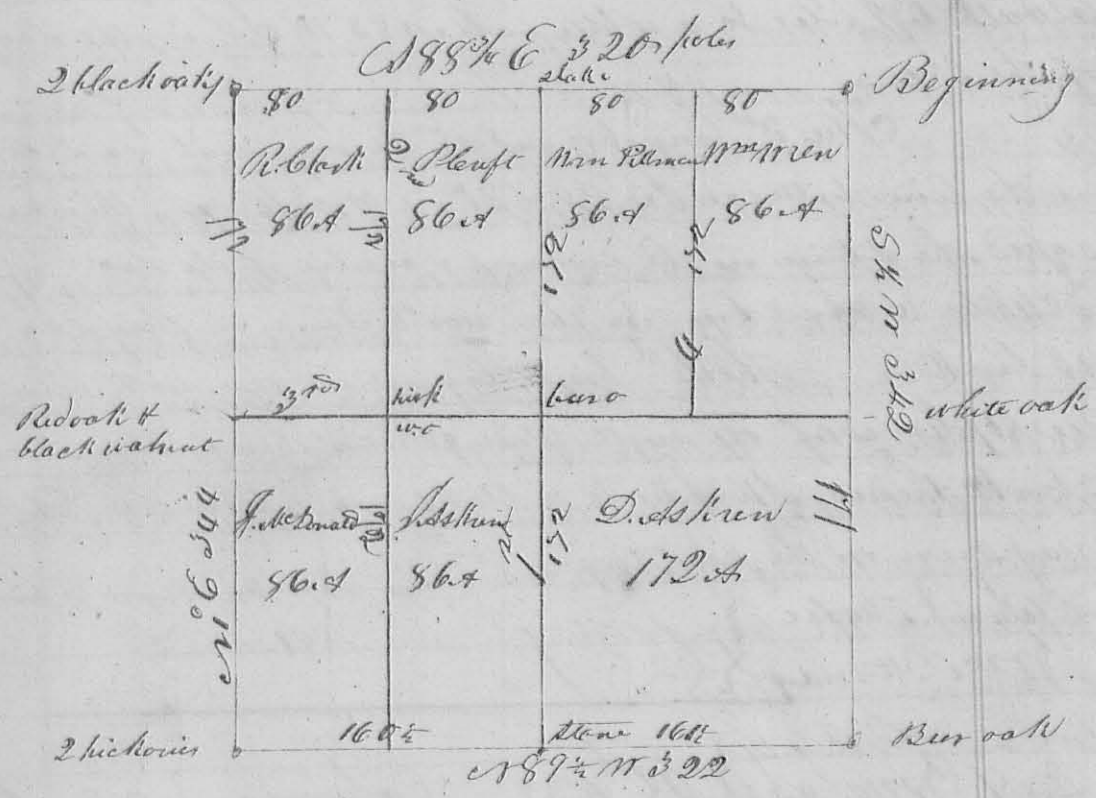
W. M. Marrison S. L. C.
 Saml. Moore }
 Wm Pittman } C. C.

184
 9th mo. Sept, 28th 1832 } Survey 20 174
 D. Ashen } Surveyed and divided Sec. 23, T. 4 R. 13 N. R. 13.
 J. Ashen } as hereafter described for David Ashen, John Ashen
 Wm Pittman } William Pittman Robert Clark John McDonald &
 R. Clark } William Wren Beginning at the corner of,
 Geo. McDonald } Secs. 17, 18, 23 & 24 a white oak S 38° W 13 links - a dog wood
 Mrs Wren et al } N 85° E 26 L - thence on the line between Sec. 17 & 23
 S 11° W 342 poles to the original corner of Sec. 16, 17, 22 &
 23 a bur oak N 11° W 16 L - the other tree is across, which
 is called for here - thence between Secs 22 & 23 -

8280

156

$r 89\frac{1}{2} N 322$ poles, passed a stone, the gr. sec. corner
 at $161\frac{1}{2}$ poles to the corner between sec. 22, 23, 28 & 29
 a hickory $S 24 N 22 E$. a hickory $N 76 N 21 E$. Thence
 $r 1^{\circ} E$, with the line between 23 & 29 (crossed a road at
 20 poles, passed the gr. sec. corner at 472 poles & red
 oak. $r 60 W 14 E$, a black walnut $r 68 E 21 E$
 344 poles to the corner of sec. 23, 24, 29 & 30 a black
 oak $r 11 E 9 E$. a black oak $r 72\frac{1}{2} E 21 E$. Thence
 between sec. 23 & 24 $S 88\frac{3}{4} E 320$ poles to the corner
 of sec. 17, 18 23 & 24 a white oak $r 38 N 13 E$. a dogwood
 $r 85 E 26 E$ Links original corner - Thence between
 sec. 17 & 23 $S 4 N$ with the old line 342 poles to the
 beginning containing 688 acres -
 Plat



The 1st division line begins in the south line of the sec.
 160 $\frac{1}{2}$ poles from the the southeast corner thereof, thence
 $r 1^{\circ} E$ at 172 poles passed a bur oak $r 72^{\circ} E 15 E$. the center of the
 sec. 342 poles to a stake in a prairie in the north line of the
 sec. The 2nd division line begins at a hickory $r 75^{\circ} E 6 E$ a
 hickory south 60 in the north line 80 poles from the N.W.
 corner of the sec. thence $S 1^{\circ} W$ 172 poles a white oak $r 58 E 28 E$
 a hickory $r 63 E 17 E$ 344 a stake in a prairie in the south line

of the sec 80 poles from the N.W. corner then of
 The 3rd line begins at the gr. sec. corner in the west
 line of the sec. Thence S 7 1/2° E 340 poles (passing the centre
 corner) to a small white oak in the centre of the east
 line - The 4th line begins at a stone 80 poles west
 of the last named corner; Thence N 1° E 172 poles to a stone
 a hickory S 25° W 26 L. in the north line 80 poles west of
 the N.E. corner of the sec. The number of acres and the
 owners names are marked on each division of
 the plat

Saml. Moore }
 David Piatt } C.C.

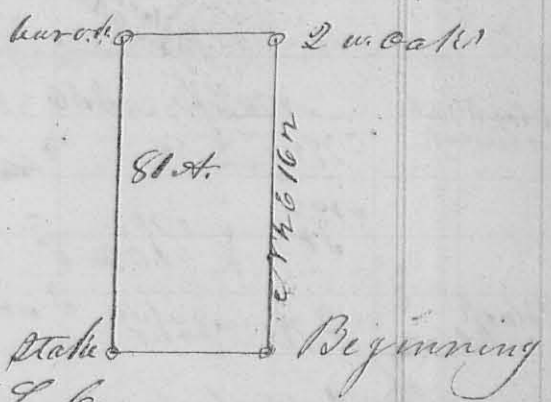
La Mettarron
 Co, S, L, C,

Robert Clark 9th mo. (Sept. 29th 1832)

Survey # 195

Surveyed the east half of the N.E. qr of sec. 24 T4 R13
 M. for Robert Clark. - beginning at the gr. sec. cor-
 -ner between sec 18 & 24 a stone in a prairie from which
 a red oak bears N 20° E 150 L. an original bearing tree
 thence between sec 18 & 24 N 1/2° E 162 poles to the
 N.E. corner of said sec. a white oak S 5° W 17 L
 a white oak N 10 1/2° E 34 L - Thence N 89 1/2° W with
 the original line 80 poles to a stone, a bar oak
 S 70° E 68 L - Thence S 1/2° W

162 poles to a stake in a
 prairie thence S 89 1/2° E
 80 poles to the beginning,
 containing 8 acres



Layton Pollock }
 John Wren } C.C.

La Mettarron Co, S, L, C.

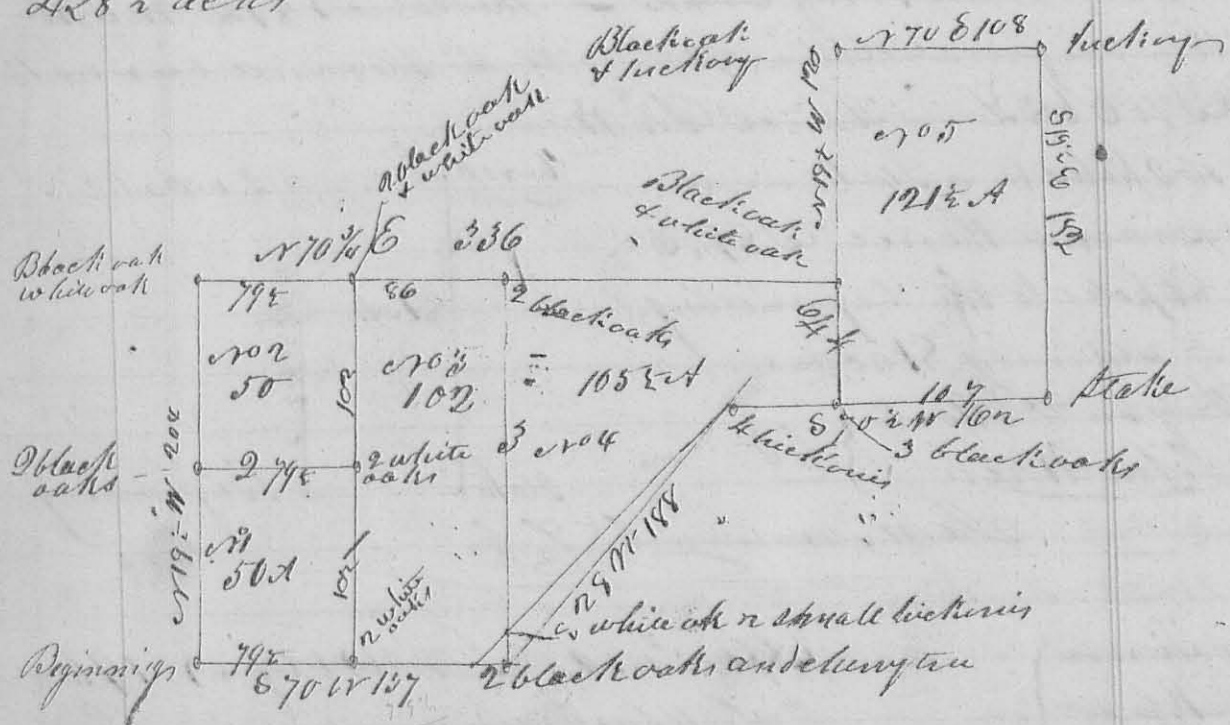
Luke Simon }
 by J. W. Farmer }

10 mo. 8th 1832 Survey # 196

resurveyed and divided Zedock
 Walker's survey of 1816 for Luke Simon
 at the request of his atty John W. Farmer
 Beginning at a white a dead black oak in Lad.
 Cow's line N.W. corner of Thomas Worthington's survey

158
Deeke
Siemen

Survey of 4479 and at the 30 mile tree on said
 line - thence with Ludlow's line N 19 1/2 W 204 poles
 to a black oak & white oak, (formerly 2 black oaks)
 N.W. corner to Zabolli, Walker's said survey & C.M.
 corner to Samuel Finley's Survey of 4493 & 4525
 thence with the South line of Finley's survey N 75 1/2 E
 336 poles to a black oak & white oak (S.E. corner to
 Finley's & used a road at 164 & at 270 poles) - thence
 N 19 1/2 W crossed the road at 76 poles, 120 poles to
 a black oak and hickory, in the east line of Finley's
 Survey, thence N 70 1/2 E 108 poles to a hickory, found
 it 4 pole east, the other hickory is down - thence N 19 1/2 E
 182 poles (crossed a branch at 105 poles) to a stake in the
 north line of Thomas Worthington's Survey of 4479
 thence N 70 1/2 W 107 poles (passed 2 black oaks & corner) at
~~162 poles crossed a road at 162 poles to to where for~~
 - muddy flood & hickory northward corner to Worthing-
 ton's Survey, thence N 28 W 188 poles to a black oak
 hickory and cherry tree another corner to Worthington
 thence S 70 W 107 poles to the beginning containing
 2128 1/2 acres



The 1st division line begins at 2 white oaks in the south-
 west of line of the Survey 79 1/2 poles from the south west cor-
 ner thence N 19 1/2 W 102 poles to paper 2 white oaks
 corner, 204 poles to 2 black oaks & white oak in Finley's

107 South line - The 3rd line begins at 2 black oaks in Ludlow's line 102 poles from either corner thence N 70° E 79 1/2 poles to the 2 white oaks in the 1st division line -

The 5th line begins at 2 black oaks in Finley's line 86 poles east of the 3 oaks at the end of the 1st line, thence S 19 1/2° E 172 poles to a white oak & 2 small hickories in the line of Northington's survey or 28° E 122 poles from the 2 black oaks and cherry tree corner to Northington

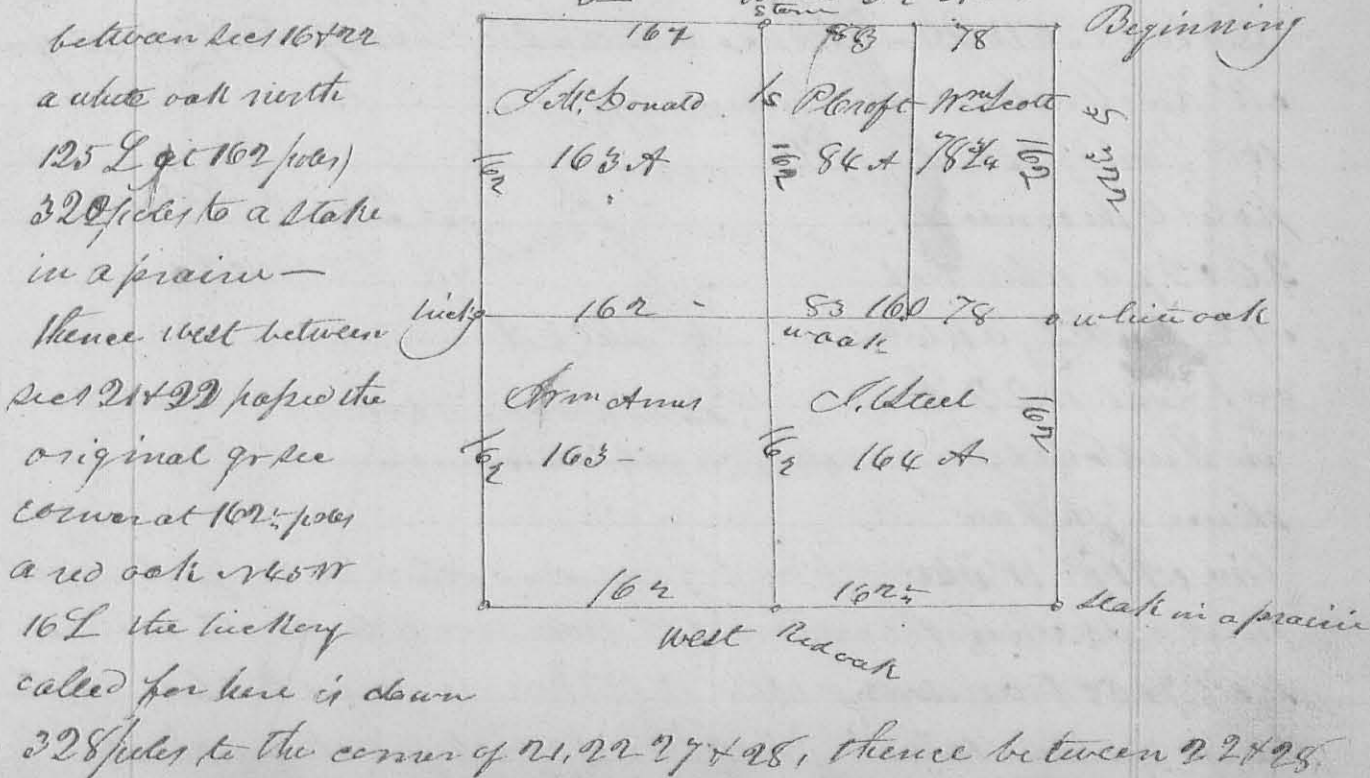
The 4th line begins at the white and black oak easterly corner to Finley, thence S 19 1/2° E 64 poles to the 3 black oaks in Northington's north line. The lots each bear the number of acres in each

Richd Shockey }
 Jeffrey Williams }
 Geo. Moot maker }
 J. M. Mearns
 G. S. L. Co.

10 mo. Oct. 10th 1832 Survey No 116 (8283)

P. Croft }
 Wm Scott }
 J. Steel }
 David Davis }
 Wm Adams }
 Samuel Brown }
 a.d.
 Sec. corner

Surveyed and divided section 22, 23 & 24 N 13 M.R.s. as follows for Philip Croft, Wm Adams, James Steel, David Davis, Wm Scott & John Mc Donald beginning at the corner of 1617, 22, 24 a bur oak N 13 1/2° W 16 L, the other bearing tree is down thence south with the old line (rapped the original 92



11° E 324 poles (passed the gr. sec. corner at 162 poles a hickory
 west 6 links) 324 to corner of sec 22, 23, 28, 29, original corner
 trees yet standing - thence between sec 22, 23, S 89 1/2° E passed
 a stone at 162 poles the gr. sec. corner) 322 poles to the beginning
 The 1st line, being at the stone in the center of the north of
 the sec. thence south 162 poles a white oak S 40° E 26 poles
 322 poles to the gr. sec. corner in the south line -

The 2nd division line begins at the gr. corner in the
 line of the sec, a hickory west 6 L. thence 89 1/2° E 162 poles,
 passed the center corner, 322 poles to the gr. sec. corner in the
 east line 3rd division line begins at 89 1/2° W 78 poles from
 the last named corner at a stake, thence north 162
 poles to a stake in the north line of the sec 78 poles from
 its e. c. corner

Henry Melhamon }
 David Platt }

Samuel Melhamon
 C. S. G. C.

(8284)

10th mo, Oct, 27 1832

Surveyor No 197

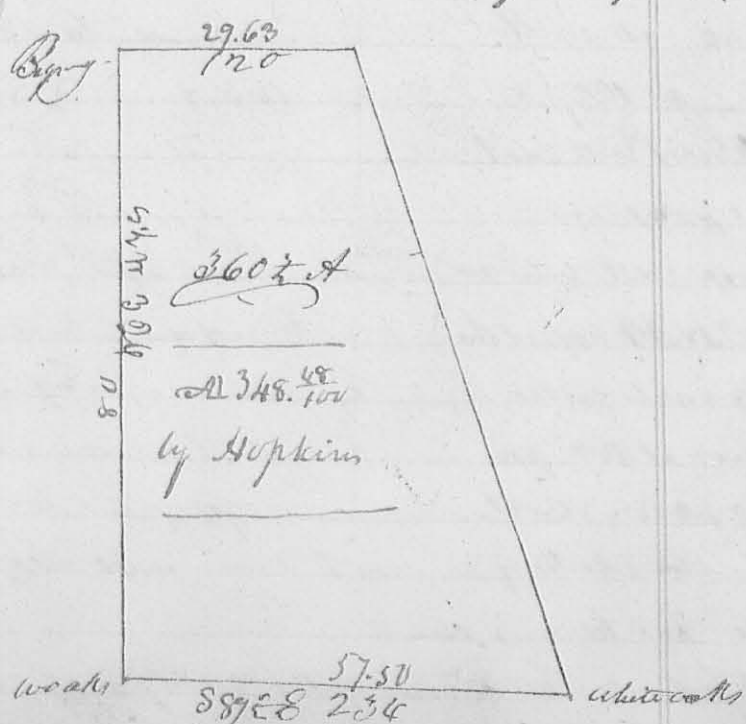
John Gordon 3

Surveyed fractional sec. 27, T4 N 14 E R14

for James Gordon; Beginning at the corner of

sec 27, 28, 33 & 34, the original bearing trees are all down -
 thence between sec 27 & 33 S 71° W 326 poles to the origin-
 -al corner of sec 26, 27, 32 & 33, a white oak 120 S 57° W
 20 L, a white oak 67 S 43° L all down marked a white
 oak 120 N 24 L thence between sec 26 & 27 S 89 1/2° E, crossed

at Key break at
 160 poles) 234
 poles to the corner of
 26 & 27 a white oak
 or 256 32 L a white
 oak (the N 22 L
 in Ludlow's line
 thence with said
 line or 195 W 346
 poles to the corner of
 sec 27 & 28 trees down
 thence between said



Sec. 189 1/2 N 120 poles to the beginning containing 360 1/2 acres

John Gunn }
Walter Gunn } 66

La Motte
C. G.

11th Nov. 1832

Survey 198

Geo. Smith }
Thomas Macumson }
Jonathan Rorton }

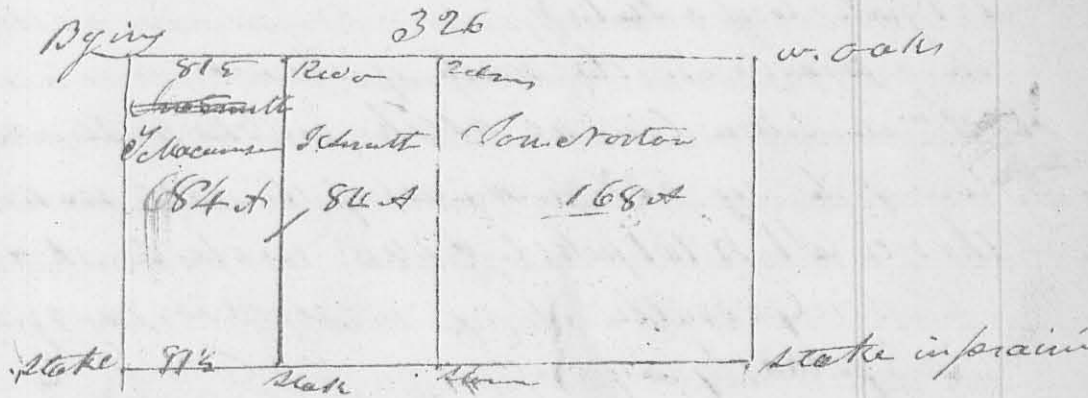
Surveyed the north half of Sec. 26
T. 3 R. 16. N. 13. for John Smith Thomas
Macumson & Jonathan Rorton as follows

8295

198

Beginning at the corner of sec 26, 27 & 28
a red oak corner tree; thence between sec 26 & 27

S 89 1/2 E 326 poles to the corner of sec 26, 27 & 28 a white oak S 85 E 142. a white oak N 87 W 50 L. - Thence between sec. 26 & 26 S 1/2 W 162 poles to a stake in a prairie in the east line of sec 26 - thence N 89 E measuring a branch at 42 poles 326 poles to a stake in a prairie in the west line of sec. 26 - thence N E 162 poles to the beginning containing 328 acres -



The 1st division line begins at a stake in the north line of the sec 81 1/2 poles from the N.W. corner of said sec a red oak S 85 E 142 a white oak N 87 W 50 L. - thence S 1/2 W 162 poles to a stake in the south line of the half sec. - The 2nd line begins at a stone in the center of the sec. thence N 1/2 E at 81 1/2 poles marked a white oak N 63 E 56 L. a white oak N 86 W 33 L, continued 162 poles to 2 small stones & a red oak in the north line of the sec. in a swamp.

La Motte

162) 11th Mo. (Nov) 5th 1832

Surveyor No 199 162

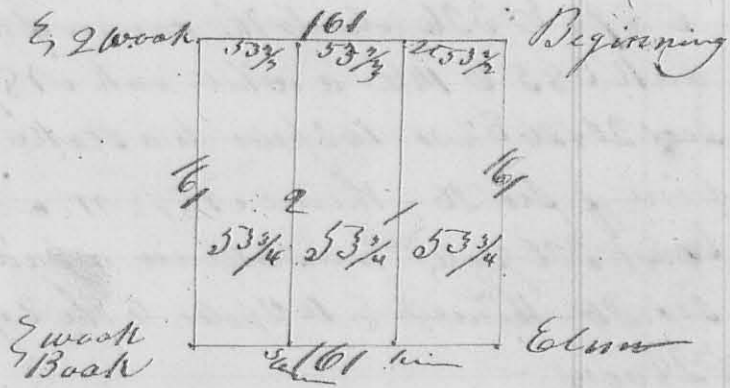
G. Broughton }
Amos & Abram }
James }

Surveyed and divided the S.E. q^r of Sec
2 T3R14MRA for Gurdon Broughton Amos
James & Abram James as follows Beginning

(8286)

at the corner of sec 2 & 3 in said T3R, a white oak
N62°E 102 a black oak N73°W 25 L. original bearing trees
thence between said sec. 2 & 3 177 161 poles, a white N3°E 25 L
a oak N53°E 29 L. thence S 17 161 poles, a white oak
N15°E 11 L a black oak N86°W 18 L. thence S 89°E 161 poles to
a white elm N91°W 45 L. in the east line of the sec —
thence with said line N1°E 161 poles to the beginning con-
-taining 162 acres

The 1st division line
begins in the South
line of the q^r
53 3/4 poles west of
the S.E. corner of the
q^r a hickory N10°W
24 L thence N1°E
161 poles to a stake
in a prairie in the north of the sec —



The 2nd division line at a stake in the prairie in the north
line of the sec. 53 3/4 poles west of the last named corner
thence S1°W 161 poles to a stone in the south line of the q^r.

John Grindle } 66
Elephas Gray } 66
Surrey & Mannon
65 L L

(8287) 11th Mo. (Nov) 6th 1832

Surveyor No 200

John Grindle }
No 200 }

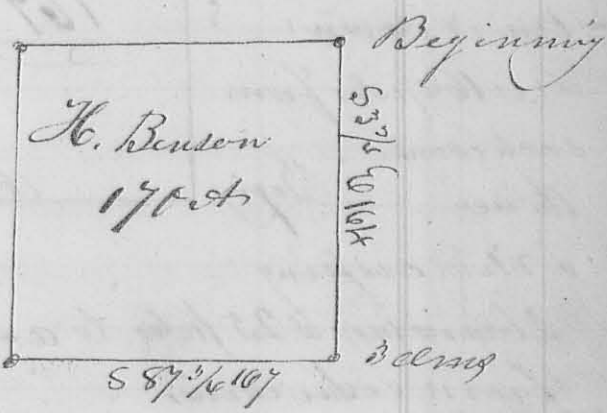
Surveyed the S.E. q^r of Sec 1 Town 3
R14MRA for John Grindle: Beginning
at the corner of

sec 1 & 2 in said T3R,
a white oak N21°W 30 L
a hickory N14°W 65 L
thence S17°W 162 poles
to a stone a white oak
S53°E 8 L thence



163
 187. N. cuping a prairie 162 poles a white oak
 188 N 302 a. n. 128 E 33 L. thence N 10 E 162 poles a white
 oak 83 E 16 L original golden corner in the north line
 of the sec. - thence with said line 189 E 162 poles to the be-
 ginning containing 164 acres
 Gorden Broughton }
 Abraham James } De Mearns, 65 46

11th Mo. 1832 Survey #201
 Wannah Benson } Surveyed the east half and the west half
 201 } of the N E q^r of Sec. 26, R 12 E T 4 S, Harder
 County for Wannah Benson - Beginning in
 the north line of said sec. 84 poles west of the E corner
 thereof a bar oak 106 4 L - a maple 156 N 28 L. thence
 S 3/4 E crossing the Sandusky road at 46 poles, 164 poles to
 3 rods - thence S 7 1/2 W, cuping said road, 167 poles
 a bush 158 N 7 L
 a bush 58 5/8 E 17 L
 thence N 3/4 W 16 3/8 poles
 a bush 157 1/2 N 20 L
 a bush 46 9/2 E 23 L
 in the north line of
 the sec - thence with
 said line 187 1/2 E
 167 poles to the beginning
 containing 170 acres
 Philip Hackethorn }
 Samuel Simson } De Mearns, 65 46



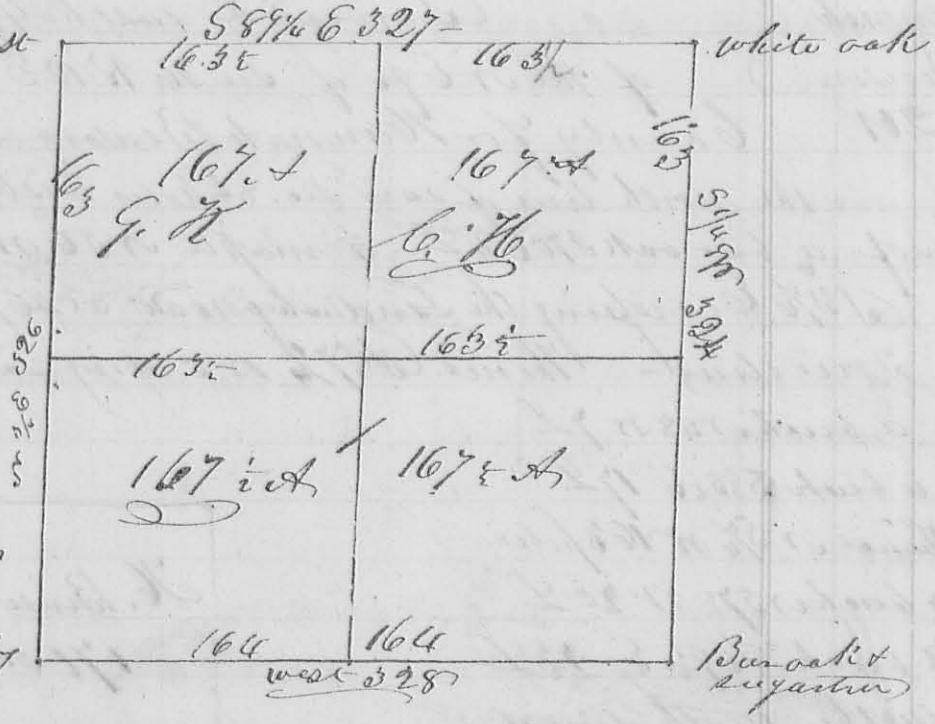
11 Mo. 1832 Survey #202
 Geo Kellerman } Surveyed divided Sec. 12 & 14
 Christy Houtz }
 + others } a. n. for Christy Houtz, George
 Kellerman, & others, Beginning at the corner
 of Sec 11, 12, 17 & 18 a white oak original corner
 down; thence between Secs 12 & 14 N 3/4 E crossing a
 branch at 25 2 poles, 32 1/2 poles to the N. W. corner of sec
 12, the original corner down, set a stake - thence

(8288)

164 thence S 89 1/4 E, crossing a road at 234 poles, one at 260 poles) 327 poles to the corner of Sec 6+12, a white oak S 7 1/2 W 62 No or 74 E 26 L. thence S 7 1/2 W, crossed a road at 78 poles one at 120 poles, a branch at 236 poles & one at 312 poles) 324 poles to the corner of Sec 5+6, 11+12 a bur oak or 37 W 26 L a sugar tree N 60 E 10 L now down) thence between p 11+12 west crossing Jack's run at 40 poles a small pond at 138, 328 poles to the

beginning
of the 1st division

line begins at the original gr. sec corner in the south line of the sec. a white oak (S 47 E 28 L (the other bearing true is down) it is 164 poles from each corner



thence
crossed crossing

2 branches) 325 poles to a stake in the north line 163 1/2 poles from either corner

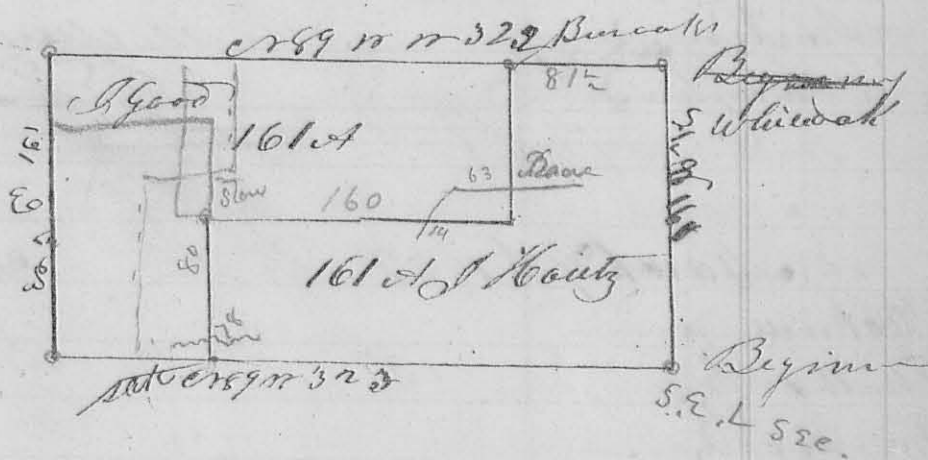
The 2nd division line begins at the original gr. sec corner in the east line of the sec. 163 poles from the N.E. corner of the sec a red oak or 84 E 21 L a white or 76 W 14 L thence or 89 1/2 W, cross, a branch) 327 poles to a white oak or 23 E 20 L a white oak 10 E 16 L in the west line 163 poles from the E.W. corner of said sec

Henry McPherson }
John Hautz }
John McPherson }
C. S. L.

John Hautz }
Jacob Good }
N. M. R. }
12th Mo. Dec. 7 1832 Survey of 203
Survey the South half of sec 4
for John Hautz and Jacob
Good Beginning in the north line at the S.E. corner

165 of said sec. a white oak 161 N 13 E, a white oak N 50 E 53 S, thence between sec 3 & 4 & 189 W crossing a branch at 248 poles) 323 poles to the corner of sec 3 & 4 9 & 10 a black oak N 34 E 12 S a white oak 166 W 46 S thence Sec 4 & 10 N 1/2 E crossing a spring branch at 98 poles) 160 poles to the original gr sec corner, a white oak N 2 E 50 S a white oak 115 N 25 S, the latter is down - thence 189 1/2 (crossing a branch at 298 poles), 322 poles to a small bur oak in the east line of the sec - thence S 1/2 W crossing a branch at 160 poles) 160 poles to the beginning containing 322 ac 2/3

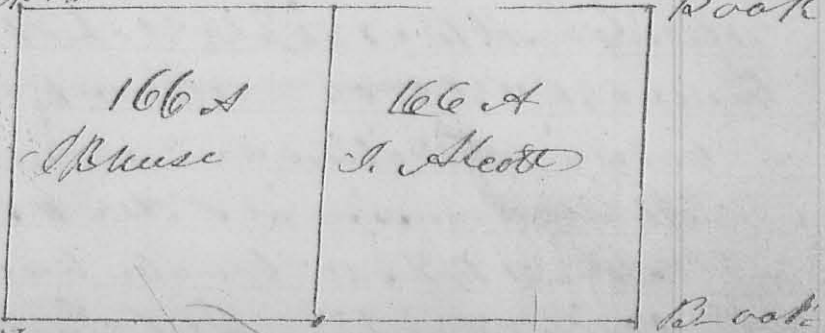
The division line begins in the north line of the sec. 81 1/2 poles from the corner of the gr a bur oak



east 6 S a bur oak oak N 43 W 13 E - thence S 1/2 W crossing a mill race at 63 poles) 80 poles to a white oak N 42 E 16 S thence E 189 1/4 W crossing the mill race at 14 poles) 160 poles to a stone - thence S 1/2 W crossing a branch at 78 poles 80 poles to a stake in a prairie in the south line of the sec -

J. Meatt } 2nd mo. Feb. 1833 } Survey No 204 (8290)
 J. Meuse }
 No 204 } Surveyed the south half of sec
 } 4 & 4 R 13 M. S. for Isaac Meatt & John Meuse
 Beginning at the corner of sec 3, 4, 9 & 10 a hickory
 north 5 S oak & sic Book

a hickory S 24 E 16 S
 thence between
 sec 3 & 4 East 326
 poles to the corner
 between 3 & 4 a
 black oak S 61 E 13 S 13 1/2

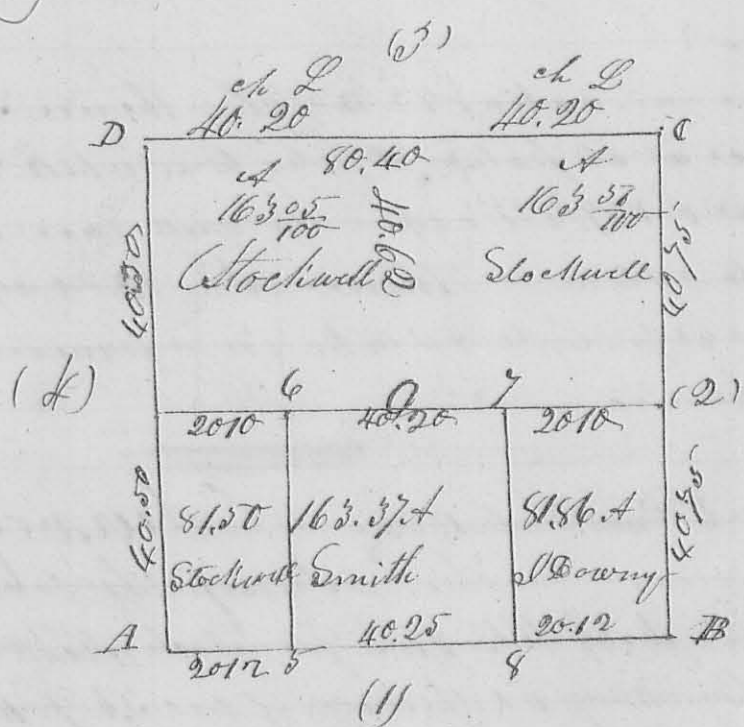


Note a bar oak at 65 W 12 L the black oak is broken down
 thence on the east line of the sec. 7 1/2 E (at a small
 branch at 118 poles) 16 3/4 poles marked a small black
 oak at 85 E 11 L a black oak bush at 26 W 10 1/2 L
 thence west 32 3/4 poles to the original 90 sec corner between
 Secs 10 & 11 a white oak 57 7/8 W 12 L a hickory at 37 6/8 20 L
 thence between Secs 10 & 11 S 1/4 W 16 3/4 poles to the beginning
 containing 33 1/2 acres - The division line begins in
 the south line of the sec. at 16 3/4 poles from each
 corner a hickory at 29 6/8 16 L a hickory 55 8 W 12 L thence
 at 16 3/4 poles to a stake in the centre of the sec.
 La King & Co. La. W. Warner
 J. C. Clayton

March 9th 1833

Survey No. 205

Stockwell }
 Smith }
 Downy }
 3291
 No. of
 Duplicates
 returned



Bearing of the section lines in the above plat is as
 follows A. B. is 8 1/4 E 80 ch 50 L thence 75 W 81.50 ch
 thence 88 W 50.40 ch - thence 5 8 1/2 ch W -

Corners of section and division lines are as follows
 At A Sec. corner - at 5 Ash W N. D. 11 E 3 1/2 L Iron
 = wood 183 W 17 L. at 6 water beech 4 1/2 S 30 1/2 W 17 L
 ash 22 1/2 E 2 7/8 At O Lynn 36 ch East 17 L

Two imp. ch. 18th S. 26th 1792^L - at 7 bech 18th S. 26th 17th 15th 2
 bech 18th S. north 50th L At original corner post -
 At B see corner - at 2 old gr. sep. post - at C see
 corner - at D bech 18th S. 26th 17th 15th 2
 11th L at D see corner at A bech 3th S. 24th 21th 21th
~~12th L at 18th S. 25th 21th 21th -~~ Corner tree

I certify the foregoing to be correct and true as made
 by me March 9th 1833 for - Stockwell, Smith &
 Israel Downy on them or being the return of said
 subdivision of sec 26th 21th 25th E - D Hopkins Depty S. 26th

I certify the foregoing a true copy as returned to me

J. W. Mearns

[Signature]
 1833

March 15th 1833

Survey No 206

Hugh Rowell }
 R. Braider }
 + Hoays }
 No 206 }
 _____ }

No 2 of
 Depty
 Survey
 at

Red oak

	East		
50.15	39.08	39.16	63
	156.22 A		
	38.57		
50.15	26.1	12.90	63
	104.36	50.4	
		11.31 A	
		1/2 S. 26 th	
	25.70	12.90	
		38.18	

original corner
 at Hickory

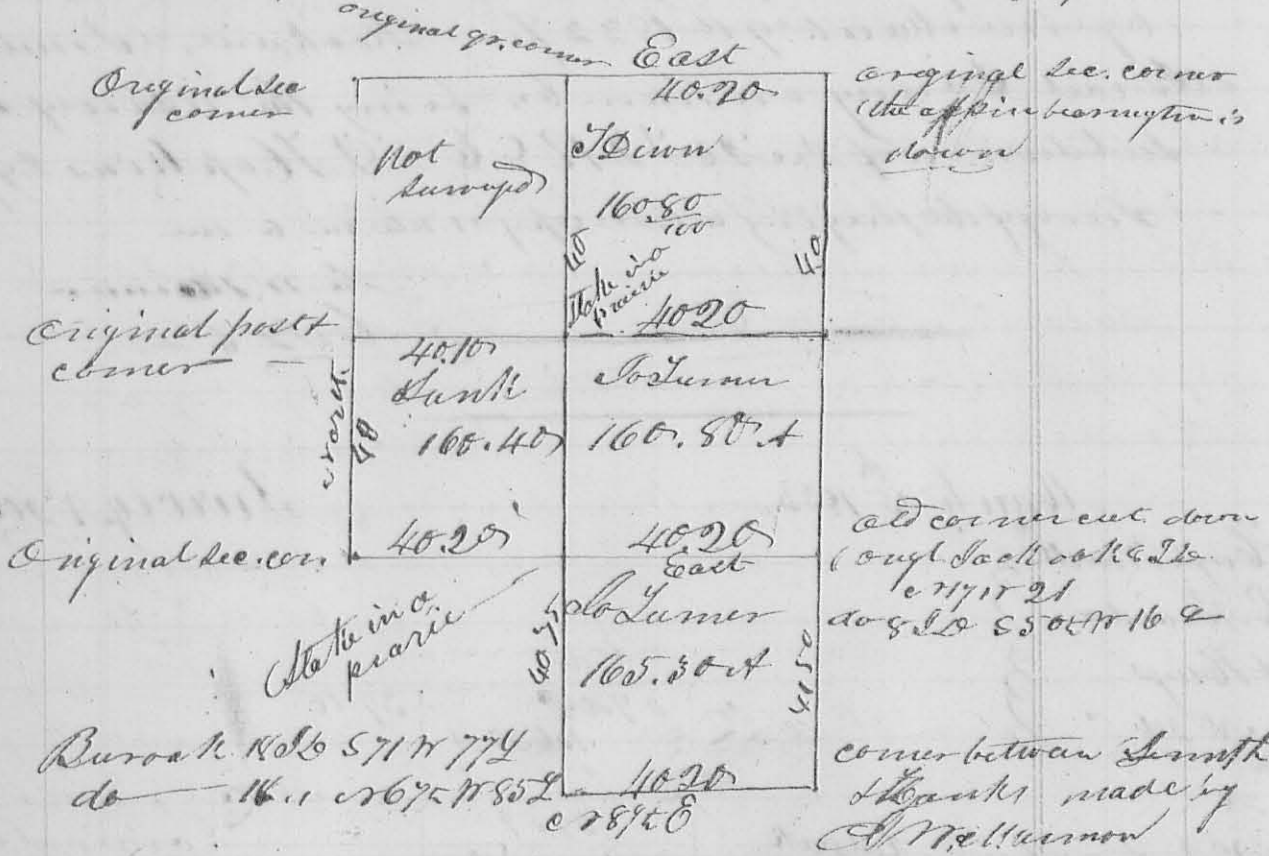
Original corner
 of the sec -

The two north corners of the above fifty acres lot
 no trees near - This survey No 2 (of survey returned
 of my Deputy) represents sec 11 T. 16 N. 13 W. for
 Hugh Rowell, R. Braider, Hoays & Hoays - adjoining
 Brown - March 15th 1833 D. Hopkins Depty Surveyor
 I certify the foregoing to be a correct copy of the survey No 2
 of my Deputy D. Hopkins as returned to me for record -

J. W. Mearns
 1833

[Faint handwritten notes and scribbles at the bottom of the page]

168 (8293) April 3rd 1833 Survey n^o 207
 Adams } Survey n^o 207 represents Sect. n^o 3 T²
 Hunt } R. McMillan & Co. gr of Sect 2 Same Town.
 T. Diun } Ship & Range - Owners names on marked
 no 3 of } on the several quarters
 Dept work } Orsen & Ed. Bordie chains
 Surveyed April 3rd 1833 E. Hopkins Deputy S



I certify the above to be a correct copy of Survey n^o 3 as made or returned to me by Dan Hopkins Deputy Surveyor Fla. - James McMillan

[Signature]

April, 4th mo, 29th 1833 Survey n^o 208
 Wm. McBeth } Surveyed, for Daniel Russell & William
 no 4 of (8294) McBeth, the r. & c. gr of Sect 36 T² R 13. W. 2
 Dept Survey } as follows - Beginning at the r. & c. corner of
 the section at a black oak 12 1/2 c. corner tree, thence
 S 2^o W 40.25 chs to original corner on the east side of
 the sec. thence west 42.50 chs to a jack oak 6 1/2 c. 758 1/2
 50 L, and a jack oak 3 1/2 c. 26 c 57 L (Stake in the Liberty
 road) - thence in the road 1 3/4 c 41 1/2 chs to a W.O.

169 15 S. 140 E 30 L. Black oak 15 S. 168 N 56 L. on the north line of the sec. Thence with said line S 89 1/2 E. 43.75 ch. to the beginning containing 174.80 acres —

Then cut off the south side of said gr. for million.

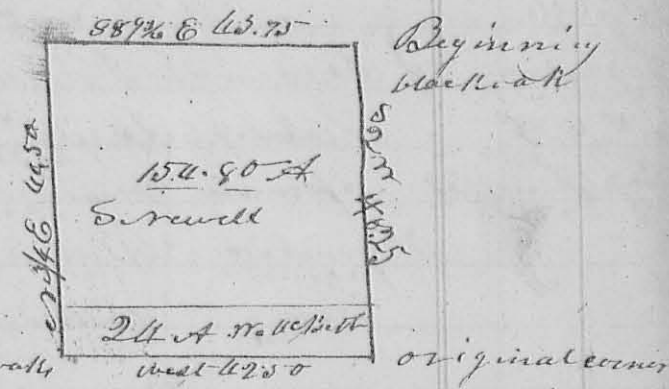
• McBeth 24 acres by a line as follows — begin —

— running N 1/4 E. 5.54 chains from the S.W. corner thence

at a N. 0. 18 S. 133 N 3 3/4 L. & W. 0 22 S. 650 M 2 oak oak

35 L — Thence East 4 1/2 chains to a N. 0. 18 S. 117 N 3 2 L —

Surveyed April 29th 1833 George F. Rock } 66. Handy Powell }



I certify the foregoing to a correct as returned to my office by D. Hopkins Depty Surveyor James W. Harmon C. L. C.

Madison 1805 sep April 30th 1833

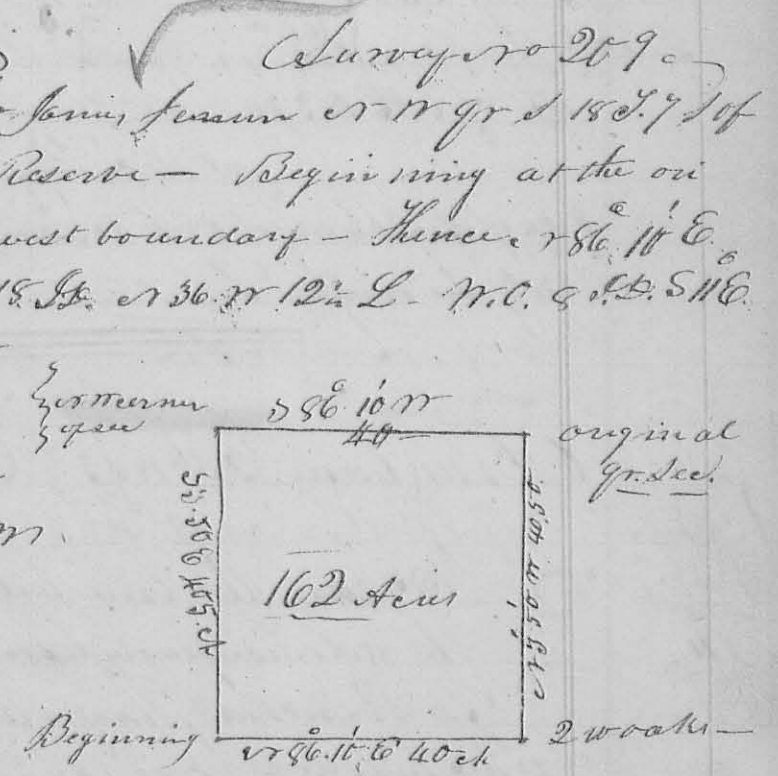
8295

R. G. & Lewis town Reserve — Beginning at the original gr corner on the west boundary — Thence N 86 1/2 E. 40 chains to a white oak 18 S. 136 N 12 1/2 L. N. 0. 9 S. 5 1/2 E.

5 Links thence N 3 5/8 W 40.50 ch to original gr. sec corner on the north line of the sec. — Thence S 86 10' N 40 ch to N.W. corner of sec.

Thence with its west line at 3 5/8 E 40.50 ch to the beginning, containing 162 acres

Martin Luger } 66 James Luger } 66 April 30th 1833



I certify the foregoing to a correct copy of Surveyors returned to my office by D. Hopkins — James W. Harmon C. L. C.

May 5th 1833

Surveyor 210
Subdivision of Sec 36 T3 R14 MB

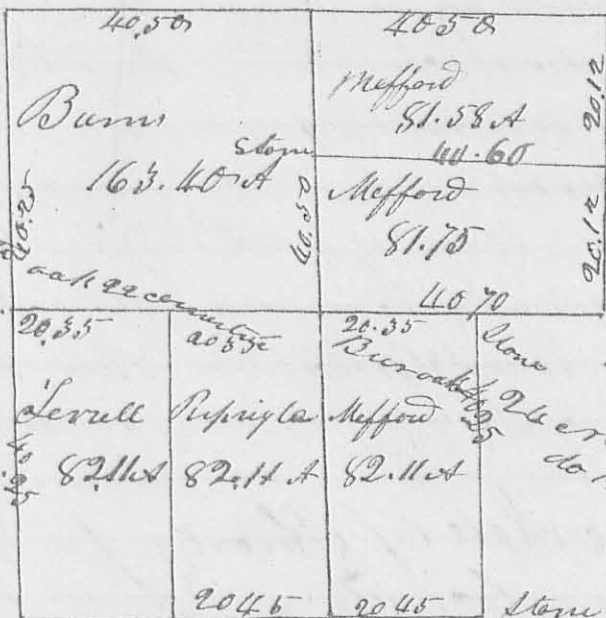
Burns
Mefford
Rippling
Serrell
No 6 of
Dept Survey

Stake in a prairie

Line in prairie

Stake in a prairie

Stake in a prairie



Hickory 65721172

Bur oak 185266255

Bur oak 8566729

Hickory 5554820

do 125786182

No. 15 20 130 11 23 2
do 18 2 565 6 47 2

Section of sec

Stone in a prairie

Shoemaker &
Daw. Jones
1 May 5th 1833

D Hopkins Depty Surveyor

I do certify the above to be a correct copy of Surveyor No 6 returned to my office by D Hopkins Depty Surveyor L.C. Cla Wethermon 6526

6th Madison, 28th 1833 Surveyor 211

V. Gray
e 10-211

I ran the line between Sec 147 T3 R. 14 MB. the adverse party having previous notice thereof for Vincent Gray and took the depositions which follow on the grounds - Beginning at a stake in a prairie, which stake is the one referred to by Abram Noddy in his depositions No 1 thence N 66 at 90 poles took the depositions of George L Dumb No 2 John Haller 3 and Abram Noddy No 40 it being on the south bank of a small lake or canal to the water

171 in the lake at 104 poles, it is 20 poles wide at 160 of 171
poles took the deposition of John Hall at 5' end of G &
Dunn & Co. and here I caused a stone to be planted
which bears N 86° E 6 poles and 3 links from a spring at
the base of the hill, present John Hall at Snoddy Geo &
Dunn, Rachel Blaylock, Samuel Carter, & chain men,
continued same course, passed an old lime tree at 272 poles
322 poles to the line between the 1st & 2nd tier of sec in this
township, planted a stone, from which a white oak
bears N 45° E 54 links -

Isaac Powell }
Abraham Coffey } Co. James McManis } S L C

Depositions taken on the ground when
making the foregoing survey -

The State of Ohio }
Logan County }
June 28th 1833

The deposition of Abner Snoddy taken relative to
the distance of a stake at the intersection of the line
running east and west & north and south at the
corner of sections 6 & 12 T 4 R 13 & 1 & 7 S 3 R 14 M B
which was taken the 28th day of June A D 1833, the
adverse party having previous notice, who being duly
sworn deponent and saith "That in the summer of
1830 (the deponent) in company with John Dunn &
John Foster searched for said corner, and found an
old stake in the following manner (to wit, by placing
one of their party in the prairie, while the other
two took the range of the lines, and gave directions
to the one in the prairie to stand at the point of
intersection, but that before they had fully accom-
plished their directions, by taking the range of the
lines, the one in the prairie cried out to them
that he had found the stake, and that he the de-
ponent has ever since been acquainted with
the place and really believes that the old stump of

172 a stake now remaining in this prairie is at ¹⁷²
the same place, it having been recognized by the neigh-
-bor over since as a section corner" and further this de-
-ponent saith not here Sworn to and subscribed
on the ground before me by said Honer Snoddy
the date above written J. McKinnon C.S.L.C.

N^o 2

The deposition of George H. Dunn
taken on the line between Sec 147 Town
N^o 3 R. N^o 16 at 90 poles from the south corner
of said Sec. who being duly sworn deponent
and saith

That he has known that there was a line marked here
on some of the trees in this grove, and that he has re-
peatedly seen said line, and that he has seen one or
more line trees between this point and the corner marked
a line from more than twenty years ago, and frequently
since that period until the trees were cut down"
and further this deponent saith not G. H. Dunn
Sworn to and subscribed on the ground before me this
28th of June A.D. 1833 J. McKinnon C.S.L.C.

N^o 3

The deposition of John Hall taken on the line
aforesaid, who being duly sworn deponent
and saith— That he traced this line from
the corner south, to this ~~place~~ 24 years ago, and that
there were three trees marked between the corner and the
lake, and that they were at or near the place which
I have just now removed! and further this deponent
saith not John Hall

Sworn to and subscribed before me on the
ground this 28th day of June A.D. 1833 J. McKinnon
C.S.L.C.

N^o 4

The deposition of Honer Snoddy taken
on the line between Sec 147 T. N. 14 R. 14 at
90 poles from who being duly sworn deponent and saith

173
173 a That for a period of 23 years he has known
that there was a line on this bank marked as a
line between said Sec. & that said tree formerly
stood near the line which the Surveyor has just
now run." — At 156 poles he further saith that
he knows that there were trees marked on this
bank near this place, which were considered by
himself and others as a continuation of said sec
line" and further the deponent saith not —

Abner Snoddy,

Sworn and subscribed on the ground before me
this 28 of June. A.D. 1833 J. M. W. M. M. C. S. L. G.

No 5

The deposition of John Hall
taken on the aforesaid line at 160 poles
who being duly sworn deposes & saith

"That 18 or 20 years ago he was here, and at this point
there stood 2 trees marked as a gr. sec. corner trees
usually are —

Questioned by Surveyor

What kind of timber were these trees?

Ans^r of the deponent — They were white oak

Q. by Surveyor — What was the size of these trees?

Ans^r — They were about 15 inches in diameter

Q. by the Surveyor. How were these trees marked?

Ans^r — They were blazed about 7 inches long about
three feet from the ground, and a small notch
cut into this blaze —

Q. by Surveyor. On which side were these trees marked?

A. — The tree that stood most easterly was marked
the westerly side, and the one most westerly was
marked on the northerly side"

Q. by Surveyor — Are thou sure that the roots which I caused
to be dug up to day were at the place where one
of said trees stood —

Ans^r — I believe that it is the place, and further this deponent
saith not

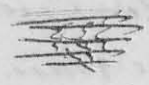
John Hall

174 Sworn to and subscribed on the ground before me
the 28th day of June A^d 1834 James Williamson
C. S. L. C.

N^o 16 The deposition of George F. Dunn taken on
the aforesaid line at 160 poles it being on a
bank north of a small lake, who being duly
sworn deposes and saith "That about 20 years
ago he was first acquainted with this place, that there
were then, and for several years since trees somewhere
near this point marked as quarter section corners
and believes the place when the roots were dug out and
referred to in John Wells' deposition were at the place
when one of said trees stood" — And further this depo-
nent saith not. G. F. Dunn

Sworn to and subscribed before me on the ground
the 28th day of June A^d 1833 J. M. Williamson
C. S. L. C.

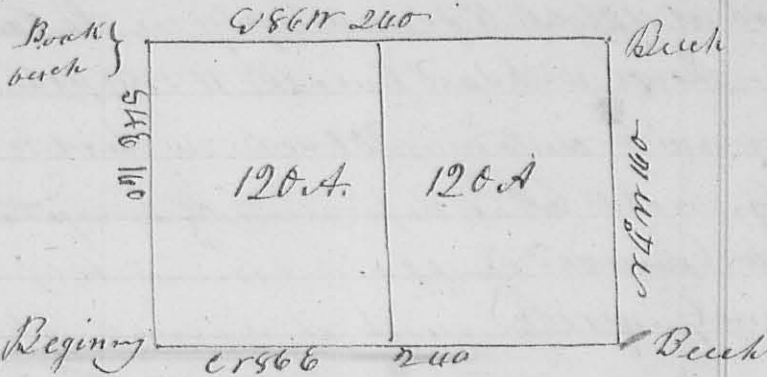
I James Williamson County Surveyor of Logan
County do hereby certify that the foregoing are
true copies from the original as taken on the ground
and place on file in my office Jan^y 28th 1833
James Williamson
C. S. L. C.



(8197)
P. H. Intine & Winters
No 212
11th mo^r 1833
Survey N^o 212
Surveyed the S. W. q^r. and E. 1/2 of S. E. q^r. of
Sec. 9 T. 1 R. 8 E. of Meridian for Patrick McIntire
and Owen Winters. Beginning at the southwest
corner of said sec. original bearing trees standing a "beech S 52 E
27 L. a beech N 27 W 5 L. thence between sec. 9 & 16 N 86 E
240 poles a beech South 7 L. thence N 4 W 160 poles (crossing
the road from Bellefontaine to Chidney) to a beech east
29 L. thence S 86 W 240 poles a bur oak S 58 E 12 L. a
beech N 71 E 13 1/2 L in the west line of the sec. — thence with
said line S 4 E 160 poles (crossing said road) to the beginning

containing 240 acres

The division line begins on the south line of the sec. a large white oak 52077 8 L. a buck 160 546 160 14 L. thence N 4 W



(Crossing the road) 160 poles to a buck S 82 E 169. in the north line of the 90 sec. making two equal lots of 120 acres each

Samuel Hannon 65 L. to.

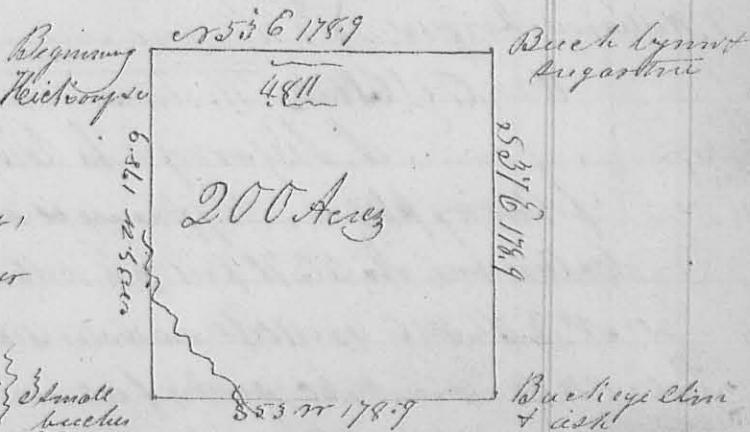
A Brown
A^c 213

11th mo 1800, 9th 1833, Surveyor No 213
Surveyed 200 acres of land for Aaron Brown

who presented to me a certificate from Judge Thomas Kopp Auditor of Logan County dated at Bellefontaine Decr. 12th 1831 certifying "that 200 acres of parts of 711 acres

of land surveyed in the name of Richard Call et al of Entry 4810 on the waters of Mill Cr. in said County which land is forfeited to the State of Ohio in the name of Jeremiah Mc Lane for non payment of taxes interest and penalty for the years 1823 to 1831 inclusive, amounting to \$7.74.7 was this day sold by me to Aaron Brown, "a quality to an act entitled an act to provide for the sale of lands forfeited to the state for the non payment of taxes, passed March 16th 1831" You are therefore hereby required to proceed at the request of the purchaser to ascertain the boundaries of such tract of land so purchased. - Wherefore I began at the north west corner of Richard

Call's survey No 4810 on the waters of Mill Cr. at a Hickory Sugar tree, buck eye & walnut all of which are down, except the Hickory, corner to said survey and N 6 corner to Wm Croghan's survey No 4689. -



thence with the north line of Call's survey S 37 E (present bearing)

178.9 poles to a buck, by nut and Sugar tree - thence S 37 E 178.9 poles, to a