

N^o 295

8360

Surveyed for Fielding Bodin, the north half of the NW quarter of S. 36 T. 4 R. 13 N. R. 1 S. as follows Beginning East line of said q^r sect. one pole north of the center then at a White Oak 22¹/₂ N 78¹/₂ W 12 Links then S 15¹/₂ W 11 Links then N 7¹/₂ E 17. 62 cuping Honey Creek ^{at 14.50} to a State in a prairie 4¹/₂ rods S 4¹/₂ W from the North East Corner of said q^r sect. then N 89¹/₂ W 22.75 to a State in a field then S 10¹/₂ W 8.07 to a Bar Oak 2¹/₂ S 14¹/₂ E 17 Links then S 10¹/₂ W 33. then N 89¹/₂ W 18 chains to White Oak 22¹/₂ N 9¹/₂ E 7¹/₂ Links then S 10¹/₂ W 11 Links then S 4¹/₂ W 9.33 to Hickory 10¹/₂ S 15¹/₂ W 13 Links then S 89¹/₂ E 40.75 cuping Honey Creek ^{at 14.50} to the beginning Containing 60 ⁶³/₁₀₀ Acs.

Nov. 18. 1835

Land Hopkin, L. Sawyer

N^o 296

8361

Surveyed Nov. 19. 1835 for Raphael Moore Fifty acres of land being part of the NW q^r of S. 19 T. 3. R. 13 N. R. 1 S. beginning 50 poles west of the Center Corner in the South line of the Section at a Black 15¹/₂ N 10¹/₂ E 21 Links. then S 10¹/₂ W 58.66 57¹/₂ Links then S 10¹/₂ W 17 poles Links. cuping the Creek at 43 poles, and 32 poles, and 26 poles to a White Oak 2¹/₂ S 10¹/₂ W 14 Links a Spruce Jack Oak 36¹/₂ S 35¹/₂ E 35 Links. then N 89¹/₂ E 26.25 cuping road at 11 poles to a White then 7¹/₂ Corner tree from which a Bar Oak 22¹/₂ bears East 13 Links. then South ^{19.04} to the NW corner of the Section. a State in a prairie. then S 89¹/₂ E 26.25 Links to the beginning Containing 50 acres.

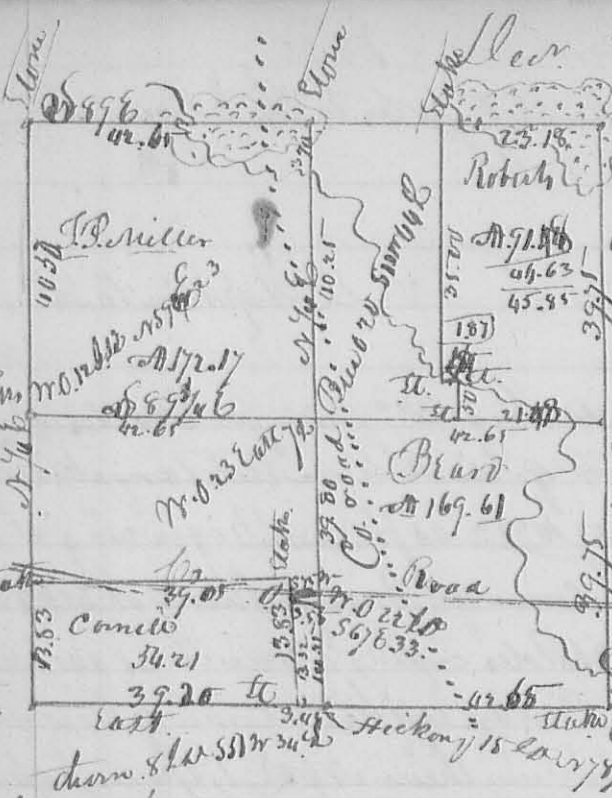
Robert Moore land. Moore Ch. Cur.

Land Hopkin, L. Sawyer

N^o 297

Surveyed Dec 2nd 1835 for L. P. Wysong a part of Military Survey N. 9955. as follows to wit: Beginning at the South East Corner of 100 Acres of land conveyed by James B. Over to John Hemphill sent at a Sugar stump in a County road. then with the East line of said 100 acres S 12¹/₂ W 18¹/₂ feet or 11 poles to a State in the edge of a Street of Richland then S 48¹/₂ W 33¹/₁₀ poles to a Sugar tree 6 inches diameter. Corner tree in the edge of a State road. then with the Course of said road S 38¹/₂ W 16¹/₁₀ poles. cuping along a large creek at 12 poles to a State in the South line of said 100 Acres. then with said line S 78¹/₂ E

N. 300



Dec. 1835 ✓
 State back O. & W. N 69 1/2 E 107 Links
 to 110 S 82 E 102 1/2 Links -
 Corners at O. S 75 W 355 from N 22 W 56 1/2
 32 Links in a N. O. 16 W 59 W 49 1/2 Hick
 12 W N 89 E 56 Links
 Wh. O. 15 W S 21 E 8 Links.

This plat represents the survey &
 Sub-division of S 33 T 5 R 12 E
 between P. Miller Cornel &
 Robert.

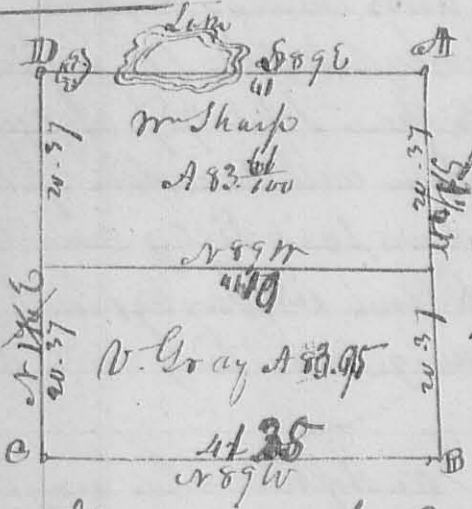
John Richards }
 John McSmith }
 John Samples }
 & the gd. Dec. 1835

wide begin at Hickory & then then N 76 1/2 W. then S 75 W 355
 then S 74 W 13.32 to stake in South line of the plat. then East
 3.45 to beginning containing 4 acres 82 hundredths.

D. Hopkins L. C. Surveyor.

N. 301

8363



Surveyed & Sub. divided. Dec. 10. 1835
 for Sharp & Gray the N. W. q. of S 1. R 12 E
 14 N. 1/2 as follows Begining at station
 N. E. corner of the q. then N 76 1/2 W 41
 3/4 to station (see letter D) then W N 89 W
 41 chain 35 Links to station. then with
 40 ch. 75 Links to the NW corner of the
 section. a white Oak 18 1/2 D. N 70 E 41
 Links. then N 89 E 41 ch. to the beginning. Containing 167 3/4
 divided from center of West line begining at a Red Oak
 14 W. N 22 1/2 E 82 Links. then N 89 E 41 ch. 19 Links to
 White Oak W. S. 75 W 41 Links. then S 75 W 355 Links
 center of East line of the spot.

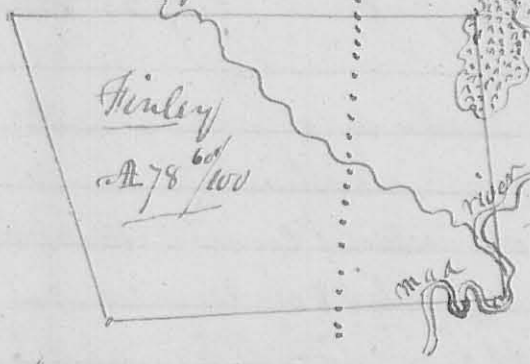
John Grindley
 D. A. Hopkins } Ch. Cor.
 Dec. 10. 1835

Dan Hopkins L. C. Surveyor.

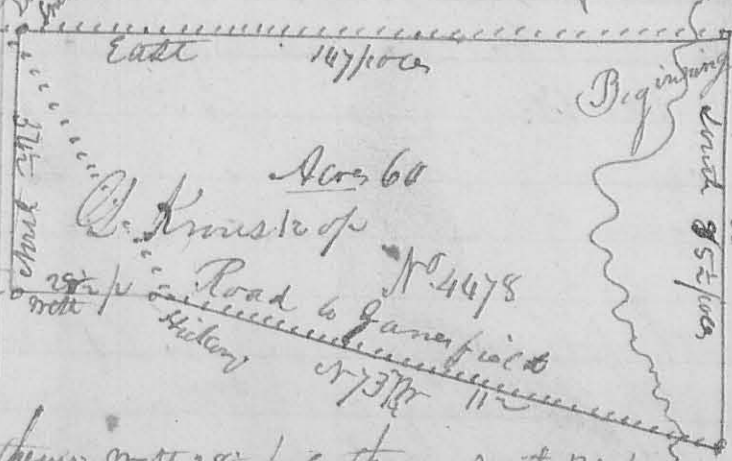
Dec. ✓ 1835

13523
 N^o 301 Surveyed Dec. 16. 1835 for Michael Muffelman the follow-
 ing tract of land to wit Beginning at a stake from 3 poles
 from the South Easterly, Comes to Lincoln McArthur's Survey
 N^o 406 & 10179. thence N 80 E 126 poles, crossing Rush Creek at
 84 & small branch at 110 poles, to an Elm Ash & Gum, thence N 12 W
 138 poles, crossing Rush Creek at 118 poles, to an Elm & 2 oaks on
 black & gray, thence S 26 W 196 poles, crossing a bend of Rush Creek
 at 104 poles, to the beginning containing 27.16 acres.
 M. Muffelman }
 J. Muffelman } ch. can.
 D. Hopkins S. G.

8364
 N^o 302 A part of N^o 4493 Surveyed Dec. 21. 1835 for Land Sturtevant
 Beginning at a Crab Apple bush in
 the edge of a prairie, thence S 70 W
 134 poles, crossing a big road & small
 branch several times, to a stake on the
 top of a ridge near a hickory &
 small Jack Oak stub, thence N 38 E
 93 poles, to small W. & 66. Oak.
 thence N 67 E 121 poles, crossing the big road a small river stream
 to a stake in a bunch of willows on the bank of the river, thence
 N 20 W 89 poles, crossing the river twice to the beginning. Con-
 taining 78 acres 60 hundredths.
 L. Sturtevant }
 Derby, Survey } ch. new
 D. Hopkins S. G.



8365
 N^o 303 Surveyed for George Sturtevant
 Jan'y 22. 1836. Begin-
 ning at a stake marked
 thence S 55 E poles, thence
 N 73 W 112 poles, to a stake
 in a big road.
 D. Hopkins S. G.



January

1836

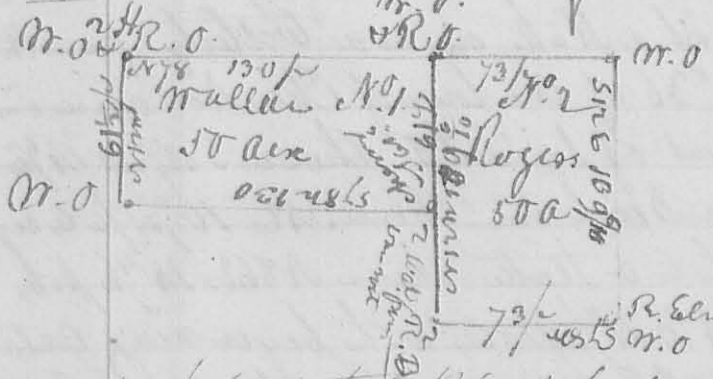
231

and ash, thence S12E 202 poles to a Sugar and two
ironwoods, thence S78W 95 poles to three Beech, thence N12W
202 poles to the beginning. Containing 120 acres.

Divided by A. Latham to said Claggs. - Divi-
ded by me on the 22nd of January as follows. Beginning
at a stake about one pole Northwesterly from a Beech, 25
poles, S12E from the NW corner of said 120 acre lot -
thence S38E 162 poles to the NW line of Rushsylvania, at
the westerly end of Rush Street, a stake in a county road
thence S38W to the SW corner of said town, thence S58E to
the south line of said lot, thence with said line S78W to 3 Beech
at SW corner thereof, thence N12W 177 poles to the beginning
Containing 216 1/2 acres, (more or less) for iron claggs, and
from said stake at the end of Rush Street in a county
road in the NW line of Rushsylvania N32E to the NW
corner of said town plat, thence S38E with said plot to
the East line of said 120 acre lot, thence with said line
N12W to two Beech and ash, N.E. corner of said lot,
thence S78W 95 poles to 2 Beech & ironwood, thence S12E 25 poles
to the beginning of said Division line. Containing
6.6 1/2 acres, for J.B. Claggs. - Jan'y 22, 1836.

David Hopkins Surveyor
D.C.

N^o 306



Surveyed for E. Haran part of
Military Survey on warrant
N^o 4688. Beginning at a
Hickories, White Oak & Red Oak
center of the west line of the
Survey, thence S12E 61 1/2 poles
to a White Oak, thence N78E
130 poles to two Black Walnuts from one root Sassafras & wild Cherry
all S in all, thence N12W 61 1/2 poles to White Oak & Red Oak, thence
S78W 120 poles to the beginning, Cont'g. 30. N^o 1. for N^o Begin-
at a m.o. thence S12E 109 1/2 poles to Red Oak m.o. thence S78W 73 1/2 poles to 2 road roads
thence N12W 109 1/2 poles passing Wallace corner at 48 poles to Red O. & W. O. thence
N78E 73 1/2 poles to beginning Cont'g. 30 acres. David Hopkins S. L. C.
Haran, David Haran ch. e. Feb'y 2, 1836

130 poles to two Black Walnuts from one root Sassafras & wild Cherry
all S in all, thence N12W 61 1/2 poles to White Oak & Red Oak, thence
S78W 120 poles to the beginning, Cont'g. 30. N^o 1. for N^o Begin-
at a m.o. thence S12E 109 1/2 poles to Red Oak m.o. thence S78W 73 1/2 poles to 2 road roads
thence N12W 109 1/2 poles passing Wallace corner at 48 poles to Red O. & W. O. thence
N78E 73 1/2 poles to beginning Cont'g. 30 acres. David Hopkins S. L. C.
Haran, David Haran ch. e. Feb'y 2, 1836

Bellefontaine Feb 7 1836

Surveyed for Hays and Caspell the three following lots of land to wit Military Survey N^o 9903 the first lot Beginning at a stake in a prairie near a bunch of willow center of the north line of said Survey thence with said line N 78^o E 74³/₁₀ poles to a stake corner to Caspell thence S 11^o E 70 poles to a stake near a water Elm another of his corners thence N 78^o E 44 poles to a stake in said Caspell well line thence with said line S 11^o E 3³/₁₀ poles to a stake thence S 71^o W 118³/₁₀ poles to a W. Elm Jack Oak & Quaking asp all small thence N 11^o W 73³/₁₀ poles to the beginning containing thirty five acres Also Beginning at a stake in the north line of said Survey S 78^o W 118³/₁₀ poles from the N E corner thence S 78^o W 44 poles to a stake thence S 11^o E 70 poles to a water Elm thence N 78^o E 44 poles to stake in a prairie thence S 11^o W 70 poles to the beginning containing 17¹/₂ acres

Also Beginning at a stone near a white oak in the line of A. Elders land and 118³/₁₀ poles S 78^o W from said Elders N. E. corner thence N 78^o E 44 poles to two white oaks thence N 11^o W 7 poles to two Bar oaks thence S 78^o W 44 poles to a stake in the edge of a prairie thence S 11^o E to the beginning containing 17¹/₂ acres

Feb 7. 1836 Dan Hopkins County Surveyor &c

Hays to Caspell
 David Miller
 Caspell to Hays

Surveyed for James Collins 97¹/₁₀₀ acres of ground as follows Beginning at a stake on road westerly from the N W corner of lot N^o 36 of the town of Cherokee and in a range with the front of said lot thence S 82^o W 14³/₁₀ poles to a stone near a Beech tree thence S 4^o E 10³/₁₀ poles crossing a spring branch to a stake thence N 86^o E 14³/₁₀ poles to a stone thence N 4^o W 11³/₁₀ poles to the beginning containing 97¹/₁₀₀ acres Feb 7. 1836 Dan Hopkins S. C.

Military Survey N^o 881. Stewart & Coy

Surveyed for James Stewart Beginning at a Red oak in a NW direction from A. Georians Mill house in the Linn Road thence S 78^o W 11 poles to a stake thence N 12^o W 9 poles 11 links to stake thence N 78^o E 17 poles to stake thence S 12^o E 9 poles 11 links to the beginning - one acre Feb 7. 1836 D Hopkins S. C.

Feb 1836

233

N^o 310

8263

Surveyed for Robert Edmiston a lot of ground adjoining the town of Cherokee as follows Beginning at the S.E. corner of Lot N^o 3 thence N 86° E 6 poles, thence N 46° 32 poles to a stake - thence S 78° W 16 2/10 poles to a stone, thence S 46° E 18 7/10 poles to a stake in the North Side of the North Alley of said town, thence thence N 86° E 10 poles to a stake parallel with the East line of Lot N^o 3 above said, thence S 46° E 11 poles to the beginning. Containing 3 Acres 41 hundredths.

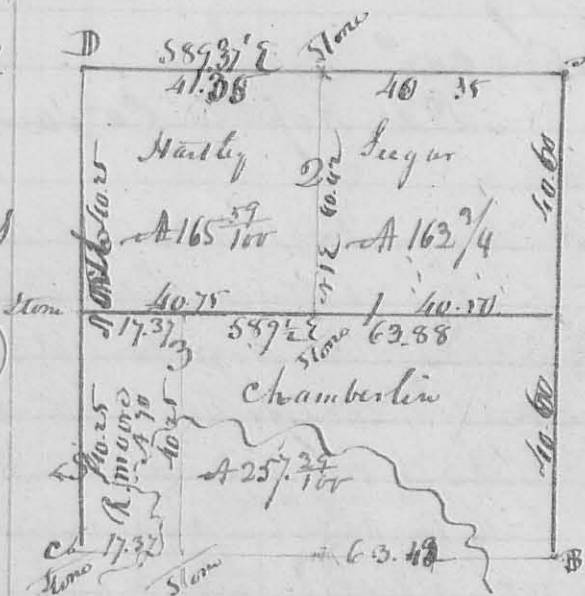
Feb 5. 1836

D. Hopkins County Surveyor &c

N^o 311

S1353
R14MRS

8370



Surveyed February 10th 1836 for Aaron Hartley and Chamberlin S12 S3 R14 MRS as follows Beginning at the N.E. Corner of the section at a Stone the original corner trees gone thence N 79° W 81 ch 20 links to a Stone bearing trees yet standing thence N 89 1/4 W 80 ch 57 Links cupping branch at 30 poles a laid rail and

another small branch to a stone bearing trees yet standing - thence North 80 ch 57 Links cupping a branch at 31.32 & 36 poles to the N.W. corner of the lot thence S 87 3/4 E 81.75 ch to the beginning. Containing 657 7/10 acres. First Division line begins at a Stone in the West line of the section in a prairie 161 1/2 poles from the corner of the section a White Oak 22 S 1/2 S 1/2 E 134 Links - thence S 89 1/2 E 25 ch 25 links to East line of the section a Jack Oak 3 S 1/2 S 1/2 E 12 links Plum bush 2 S 1/2 N 56 W 5 Links. 162 7/10 poles from either corner of the section. The second line begins at the original qrt. corner 165 1/10 poles Easterly from the N.W. corner of the section, a Stone. The original bearing trees in a decaying condition. thence S 17° W 40 ch 42 links to a Stone 163 poles from the center of the West line of the lot. - the 3rd line begins at a Bur. O. 8 S 1/2 N 77 E 16 links and Bur. O 12 S 1/2 S 1/2 W 5 ch then South 40.25 to Stone in a prairie.

D. Chamberlin S. Seegar ch. com.

D. Hopkins Co. Surveyor &c

234

Feb 7 1836

N^o 312

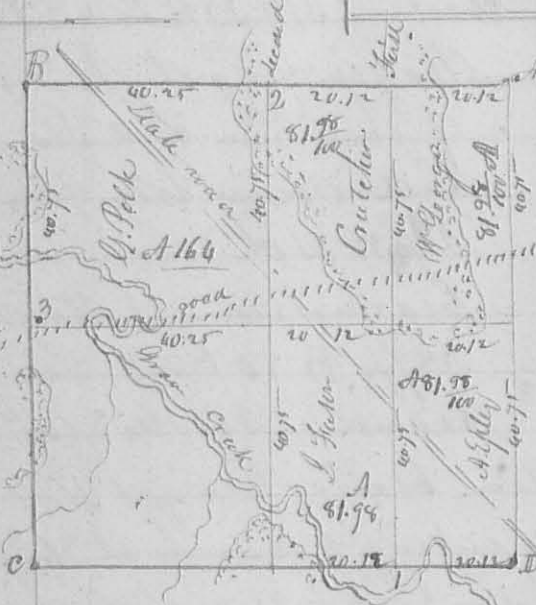
Surveyed February 11. 1836 for Wm McMillin
 the NW cor of 17 T³ R 14 S¹ N. beginning at the
 NW corner of said Sect. a stone corner tree down the
 S¹/₄ R 40. Ch 60 links to a Jack Oak 3¹/₂ S¹/₂ E 12 Pl
 um bush 2¹/₂ N 56 W 5 links, thence S 89 E 39 ch 15
 links to a white oak 15 S¹/₂ W 5¹/₂ E 40 and N. O. 15¹/₂ W
 N 54 W 5¹/₂ links, thence N 74 E 40 ch. 30 links to the
 original gr corner in the North line of the section bearing
 tree gone, thence N 89 W 40 ch. 25 links to the beginning
 containing 162⁰⁰/₁₀₀ acres -

8371

Sparsing Chamberlain
 Samuel Seeger } ch. ex^r
 Feb 7 11. 1836

San Hopkins Co. Surveyor
D.C.

N^o 313



third line

8372

Surveyed Feb 7, 1836 for William
 George & others (see the plat) S 34¹/₂ W 4 R 12
 N. R. 1 as follows: Beginning at the N E
 corner of said section (the letter A) at a
 stake, the original tree gone, thence
 with the North line of said section S 89¹/₂ W
 80 ch. 48 links to the north west corner of
 the section cupping a Big pond at rock
 to a white oak 12¹/₂ W N 68 W 30 links
 & white oak 16¹/₂ W N 55 E 26 links, thence
 S¹/₂ W 81 ch 50 links cupping creek at 20.50 road at 42 ch & oak
 at 77 ch to a stake in a prairie, thence S 89¹/₂ E 80. ch 50 links
 cupping a small branch at 29.50 on at 45.25. 69.75 & 73 ch to South
 East corner of the section original bearing tree a Bur Oak 18¹/₂ W
 N 86 12 links, on recently marked S 36 35 links, thence N¹/₂ E 81.50
 cupping two roads to the beginning. The first division line
 begins west of the SE corner of the Sect. 20.12 (see fig 1) at a
 W. Oak 16¹/₂ West 6 link thence N¹/₂ E 81.50 cupping two roads to a
 stake in a prairie 20.12 from the N E corner of the section -
 the second line begins west of the above termination 20 ch 12
 at a stake in a prairie, thence S¹/₂ West cupping two roads 82.50
 creek at 78.50 to a stake in a prairie a willow 2¹/₂ East 22 link

235

The third line begins at a stake in the edge of a field in
 the West line of the section, and 162 poles from either corner
 thence S 89° E 80 ch 50 L crossing road & grass creek 5 times passing
 the center corner on the 2nd division at 40 ch 25 links a white oak
 36 L S 30 E 8 1/2 links a white oak 12 L N 48 W 75 links a road at
 52 ch passing center corner on the 1st Division line a willow 8 L
 N 60 E 4 links in the edge of a prairie 162 poles from either end of the
 division line to a stake in the East line of the section. 162 poles from
 either corner (no timber near on which to make a corner) Course in paces
 & quantities of acres marked on the plat.

Nathan George
 George Fuson } ch. men
 and Carter

David Hopkins Surveyor Logan County

N^o 314 Surveyed February 23rd 1836 for John Grindle the South East 1/4 of
 Benjamin Wall the N^o 1/4 of Sect. 15th R 14th M. 1st as follows Beginning at the South East corner of said section
 a stone thence N 89° W 40 ch 50 links entering a pond at 162 poles left
 at 123 making the pond 34 poles a cord to a stone a white oak
 22 inches diameter N 70° W 69 1/2 links and a white oak 12 L
 S 63° W 69 links, thence N 1/4° E 39 ch 75 links to a stone a white oak
 8 L S 67° W 16 links a white oak 18 L N 81° E 25 links thence
 S 89° E 41 ch to a stone a white oak 55° E 8 links corner made by
 Mr Marmor thence S 50° W 40 ch to the beginning containing
 162^{1/4} poles. For Beginning of B. Wall, Sth 1/4. See second
 corner as above thence with Grindle West line N 1/4° E 39 75 to
 Grindle 3rd corner at above thence N 89° W 40 ch 25 links to
 a stone in Alex. Doker East line thence N 1/4° W 40 ch crossing
 the lake to the South West corner of the section in a prairie
 a white oak bears S 14° E 11.8 poles thence S 89° E 40 ch 50 links
 to the beginning containing 162^{1/4} poles.

John Grindle Jr.
 William Sharp } ch. evr. David Hopkins S. D. C.

N^o 315 Surveyed March 3rd 1836 for Philip Diehnich the
 Sth 1/4 of Sect. 15th R 14th M. 1st as follows Beginning at
 the 1st corner between 2nd & 2nd an Oak 8 L S 50° E 19 links
 a white oak (now cut down) 12 L N 86° W 21 links

March

1836

thence S 89° W 39.30 to a stake in a prairie, thence
 N 75° E 39.30 to a White Oak 152° W 39° W 3 links,
 a White Oak 22° S 20° E 22 links, thence East 39° ch.
 80 Links, crossing a branch at 13 ch to a Hickory, 152° W
 N 35° E 36 Links, a Bur Oak 18° S 35° W 57 Links, then
 S 7° W 39.25 crossing a branch at 37 ch to the beginning
 containing 156. ¹⁰⁰/₁₀₀ acres Dan Hopkins S. Co. Surveyor

N^o 316

Surveyed for James McColloch a lot of land as follows -
 Beginning at two Hickories & Red Oak N. West corner to
 James McColloch Survey N^o 495, thence N 31° E 100 poles to a large
 flat stem in the edge of a branch a small W. Oak
 grub & Ash on each side of it, thence S 60° W 75 poles to
 two hickories thence N 30° W 110 poles to a stem White oak
 two hickory grubs & W. Walnut in the Southern line of
 J. Mc Colloch's land thence with said line N 60° E 72
 poles to the beginning containing 45 acres - part of survey
 8762 8303 8485 & 10852. also Surveyed at same time another lot
 out of same original survey, as follows Beginning S 88° E
 19 poles from the N. West corner to Ellison's lot. (which begins
 at dog woods & hickory in J. Mc Bayley's East line) at a stem
 thence S 33° E 34 poles to 3 W. O. Grubs, 2 from one end thence
 S 88° E 22 3/4 poles, crossing a branch to a stake, a Red oak &
 L. O. bean N 44° E 42 Links - thence North 34 1/2 poles to a small
 Red Oak, thence N 88° W 33 1/2 poles to the beginning - contg
 6 ¹⁰⁰/₁₀₀ acres. March 9. 1836. Dan Hopkins Co. Surveyor J. C.

N^o 317

Surveyed March 14th 1836 for Samuel Hall a part of
 Survey N^o 9905, as follows Beginning at a Buck in the line
 of Watson's land N. W. corner to Richard Stecker, thence
 N 78° E 97 poles, crossing a branch at 80 1/4 poles to two bucks, thence
 N 12° W 135 poles, crossing the White Sulphur branch at 61.94 & 100 poles
 to an Elm, corner stake in Church's, thence down the creek
 with the Meander, thence as follows N 12° W 16 1/2 poles, S 69° W 20 1/2 poles
 S 96° 13' W 10 poles, S 34° W 12 poles, S 51° W 12 poles, S 15° W 11 poles, S 97° E 9 poles -
 S 70° W 11 1/2 poles, S 50° W 8 poles to the mouth of the Sulphur branch

March 1836

237

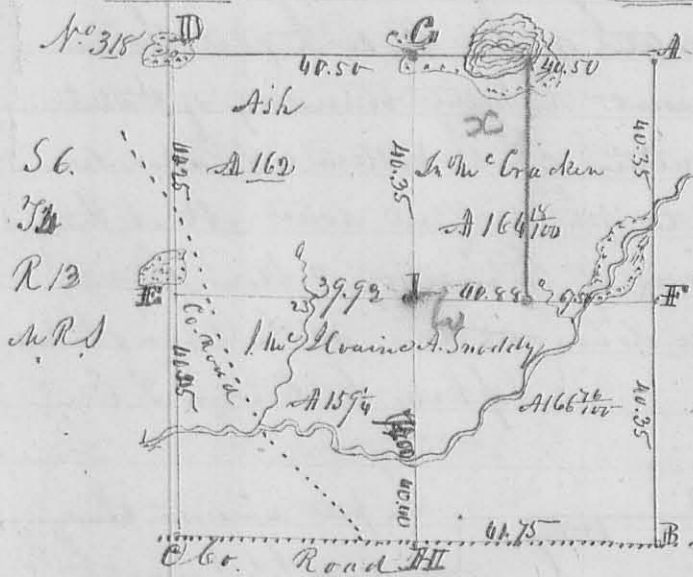
to a White Oak & Ash, then a S12E 57 poles to 2 beeches then a S78W 22 1/2 poles to a stake in Watson's line, then a S12E 59 poles to the beginning containing 7 Acres,

Joshua Amos
James Roof

Land Office County Surveyor S.C.

Same time Surveyed part of Haystack 7 1/2 acres part of same survey beginning at the mouth of the Sulphur branch of a creek then S12E 57 poles to two beeches, then S78W 22 1/2 poles to a stake in Watson's line, then with said line N12W 43 poles to two Sugar trees the corner in the creek, then up the creek in its center to the beginning containing an above 7 acres.

J. Hopkins Surveyor S.C.



Surveyed & sub. divided for John McKee in Abner Snoddy John M. Hoain and Ash. S.C. T.R. 14 m. r. s. shown by the plat as follows, beginning at the S.E. corner of the Sect. (See letter A) then a S78W 80 ch. 70 l. curving N.E. to a stake in a barrow in a County road, then a N89W 80 ch. 62 links, passing the original gr. l. corner, a White Oak 16 l. S 266 26 l. and N. V. 16 l. N59W 11 l. (down) at 41 ch. 75 l.

to the S.W. corner of the section (See letter C) a R. Oak 12 l. S 152 W 17 l. and R. Oak 14 l. South 14 l. (cut down), then a N7E 80 ch. 70 l. passing the original gr. l. corner (a White Oak 10 l. S 14 l. and White Oak 14 l. S57W 31 links) at 40 ch. 45 links, curving N.E. at 19.50 to a stake in a prairie (See letter D), then a S89E 81 chains curving a prairie and a pond to the beginning. The first division line (See letter E) begins at the original bearing tree on the west line of the section, marked for the quarter section corner (See letter F) then a S89E 80 ch 81 links curving a Spring branch at 23 chains, passing the interior corner (See letter G, a White Oak 15 l. S 396 27 l. links a Hickory 15 l. S 116 E 32 links) at 39 ch. 93 links, curving N.E. at 67.50 to a White Oak 14 l. S 80 W 20 links a White Oak 15 l. S 89 W 48 links.

The second division line (See letter H) begins on the north line of the section, 40 ch. 50 l. from either section corner, at a White Oak 22 l. S 77 W 62 l. links, distant and a White Oak 12 l. S 63 W 69 links, then a S12W 80 ch. 75 links, passing

at D. Stand in a prairie. At E. Original Corner, The lot marked ²³⁹
 "G. Mairgater, represents 100 acres, not surveyed, when this subdivision
 in was made, but formerly occupied by said G. Mairgater, and is
 only marked on the plat to show its situation. The Eastern third
 contains 346 ⁶⁰/₁₀₀ acres, laid off agreeably to the original conveyance
 132 ¹/₂ pole wide, extending the length of the survey.

Surveyed April 5. 1826.

D. Hopkins Surveyor G.

Linniah Laughlin

William Robt Ch. Com.

N^o 321 Surveyed April 20th. 1836 for John Wheeler, Admt. of Philomena Rogers
 dec. part of Survey N^o 9975. Beginning at 2 beeches, N.W. corner
 of said Rogers, tot of land, thence S 12 ¹/₂ E 104 poles, crossing a large
 branch at 86 poles, to 3 sugar oaks of them now cut down. thence N 78 ⁶/₁₀
 E 100 poles, crossing a Mill race at 38 poles, Crake at 52 poles, and
 Mill race at 88 poles, to 2 beeches, now cut down, thence N 12 ¹/₂ W
 104 poles, crossing Crake at 52 poles, to big oak, Hickory, 12 beeches, thence
 S 78 W 100 poles, to the beginning containing 65 acres, laid off at
 said term, on this side of the foregoing lot to the Widow of said deceased
 for dower as follows - Beginning at the N.E. corner of said Rogers
 land, described as aforesaid at a Hickory, 12 beeches, Sugar thence S 78 W
 33 ³/₁₀ poles, to an Ironwood and Buck Eye, thence S 10 ¹/₂ E 104 poles,
 to a stake in the land line of said Lot, thence with said line
 N 78 ⁶/₁₀ E 22 ¹/₂ poles, crossing a Mill Race to Elm & beeches, the beeches
 now cut down - thence N 12 ¹/₂ W 104 poles, crossing Crake at 52 poles, to
 the beginning, containing 28 ⁶⁰/₁₀₀ acres.

L. B. Andersen 3

Hiram Hutton 3 Ch. men

D. Hopkins Surveyor G.

N^o 322 Surveyed for George Houtz & Mrs. Craig, April. 1836 the NW
 Qr. of S 21. T 2 R 14 W R 1. as follows. Beginning at the quarter
 Section Corner between S 21 & 22. at a Stand in a Road, one pole
 original bearing trees yet standing, thence S ¹/₂ W 40 ch. 60 ¹/₂ crossing
 a branch at 84 poles, to a stem, comes to Hudson, a White 22 in. do S 68 W
 25 Links, and White Oak 10 L.P. N 81 ¹/₂ E 59 Links - thence N 8 ¹/₂ E 40 ch
 50 Links, to a Hickory, 8 in. do N 52 E 22 links, Elm 8 in. do, S 28 E 34 ¹/₂
 thence N ¹/₂ E 50 chains, to a stake in a prairie, thence N 88 ³/₄ E 34 ¹/₂
 N L chain to the beginning containing 161 ²⁰/₁₀₀ acres. Also

8377

N L

3210

at same time Surveyed 80 acres off the North end of
the foregoing quarter Section as follows. beginning at above
then $S 89^{\circ} 20'$ 39 ch. 50 L. to a stake in a prairie, then $S 74^{\circ} 10'$
 20 ch. 25 Links, curving around to an Elm 8 inches diameter
Corner tree - then $N 89^{\circ} 20'$ 39 ch. 50 Links to an Elm 8 in. d.
 $N 80^{\circ} 14'$ Links, a White oak 3 in. d. $S 45^{\circ} 68'$ Links - then $N 74^{\circ}$
 20 ch. 25 Links -

D. Hopkins Co. Surveyor G. B.

N^o 323

8378

Surveyed April 29th 1836 for John Pattato, brother a Division
line between them, dividing a lot of land containing $199^{\frac{11}{100}}$ acres
Acres into two equal parts (See Survey N^o 248 page 204) as follows -
beginning on the East line of said lot 22 chain from either corner
at a Buck 12 in. d. $S 40^{\circ} 21'$ Links, Ash 2 in. d. $N 62^{\circ} 11'$ Links, then
 $N 89^{\circ} 20'$ 45 ch. 30 Links curving Indian Creek at 19 chain to a black
Ash 18 in. d. $N 64^{\circ} 11'$ 20 Links, Cypress 20 in. d. $S 63^{\circ} 32'$ Links, in the West
Line of said Lot, and of the distant from either corner, dividing the
lot into two equal parts, containing each $99^{\frac{7}{100}}$ acres -

N^o 324

8378

Surveyed July 29th 1836 for Griffin Johnson a lot of land including
a Saw mill and appurtenances as follows. Beginning at the NW
Corner of $S 35^{\circ} 59'$ $R 12$ in. $R 12$, then $S 74^{\circ} 10'$ 9 ch. $48^{\frac{1}{2}}$ Links to a Buck
 15 in. d. $S 35^{\circ} 12'$ Links, 10. 15 in. d. $N 35^{\circ} 55'$ Links, then $S 89^{\circ} 20'$ 9 ch. $48^{\frac{1}{2}}$
Links to a Cherry 18 in. d. $S 63^{\circ} 32'$ 50 Links, Logwood 4 in. d. $N 20^{\circ} 11'$ 49
Links, then $N 74^{\circ} 10'$ 9 ch. $48^{\frac{1}{2}}$ Links to a Buck 15 in. d. $E 11^{\circ} 18'$ $18^{\frac{1}{2}}$ Links
and Buck 6 in. d. $S 48^{\circ} 11'$ $31^{\frac{1}{2}}$ - then $N 89^{\circ} 20'$ 9 ch. $48^{\frac{1}{2}}$ Links curving
Indian Creek to the beginning. Containing 9 acres.

D. Hopkins Co. Surveyor G. B.

N^o 325

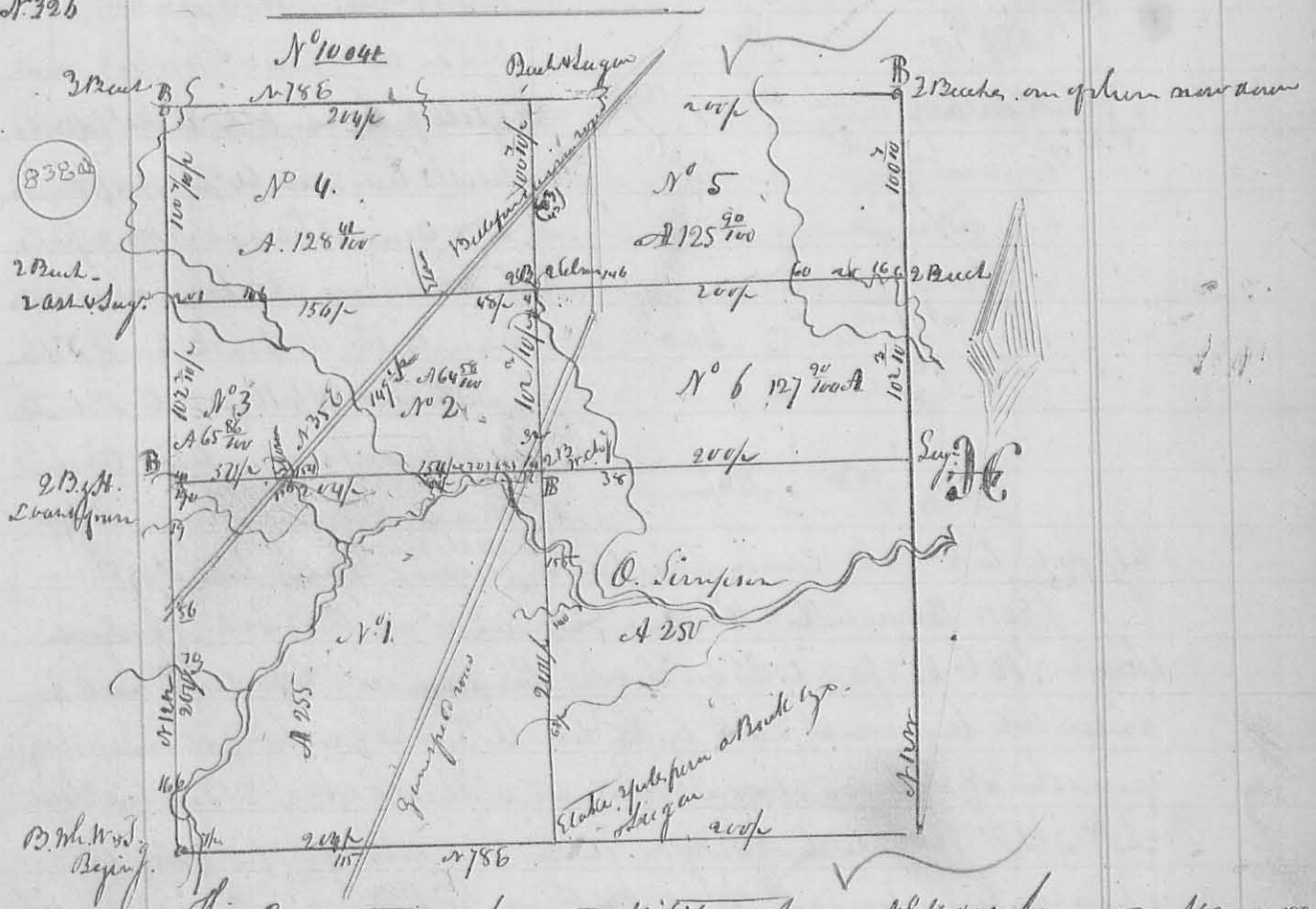
8379

Surveyed for John Leach Mrs Dryden the NW quarter of $S 16^{\circ} 43'$
 $R 12$ in. $R 12$. Beginning at the N.E. corner of said quarter Section
at a White oak 6 in. d. $N 80^{\circ} 14'$ 10 L. a Buck 12 in. d. $S 62^{\circ} 16'$ Links - then
 $S 74^{\circ} 10'$ 41 ch. 20 Links, Co. Road at 11.50 to a Buck 12 in. d. $S 25^{\circ} 56'$ 20 L. and
White Buck 2 in. d. $N 77^{\circ} 11'$ Links, then West 40 ch. 25 Links to the o.
iginal q. corner on the West line of the Section, then $N 74^{\circ} 10'$ 41 ch. 20
Links to the NW corner of the Section, then with the North line thence
 $S 89^{\circ} 20'$ East 40 ch. 25 Links to the beginning. Containing $166^{\frac{43}{100}}$ acres.

then dividing the same into ten parts as follows. Beginning on the south line of said quarter section, 20 ch. 12 links from either corner, at a White Oak 26 inches diameter 880 E 26 Links. Reach 16 in. dr. N 80 W 11 Links - then on N 2 E 41 chain 35 Links to a Bush 10 in. dr. N 41 1/2 E 6 1/2 links to a S. D. 156 W 29 Links, in the north line of said Q 20.12 from either corner -

D. Hopkins Co. Surveyor L. C.

N^o 326



This connection represents Military Survey N^o 10041 surveyed May 9, 1836 for Signs starting E.S. lying on the waters of Rush Creek - The course of the lines N 12 W. & at right angles therewith, except the line between Lots N^o 2 & 3, which runs with the Big road from a stone in the road, when the north line of lot N^o 1 crosses N 35 E to a stone, when the north line of N^o 4 crosses the Survey road, the figures with the letter p before them on the lines represent their respective lengths from corner to corner, the others (smaller) show the pole at which the branches were capped in going round the survey. B this letter denotes the beginning of each lot - except N^o 1 which begins in the south West corner of the origin of survey, the course, as noted on the map, and also the contents in acres.

Thos. Jones
John Fay } ch. men
Jacob Geary H. S. K.

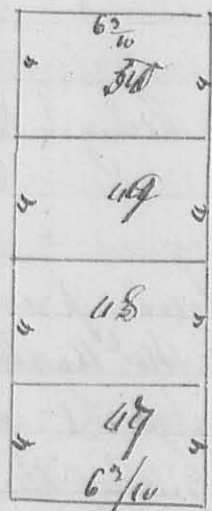
D. Hopkins Co. Surveyor L. C.

thence N 80° 6 7/10 parts in a County, said to a Bevoak, corner 243
 Corner to Kirkpatrick. thence N 10° E with said Kirkpatrick East
 by line 59 7/10 parts to a stone near small kitchen, from which
 N. by N. of Loch's N. W. thence N 80° E with his north line 64 10/100 parts to
 a stone in a pond south westing about one pole from an old the
 beginning corner of the tract in this survey divided between the bounds
 thence with their west line N 10° W 245 parts, passing Lewis' corner 44
 gain at 222 parts to the beginning containing 99 40/100 acres.

John Horn }
 John Taylor } Ch. carriers
 Dan Hopkins Secy. Jan. 26

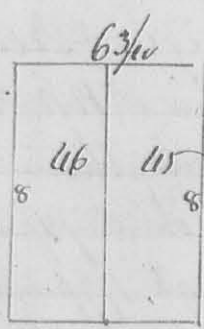
N 328

(876)

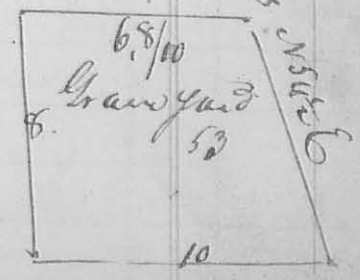
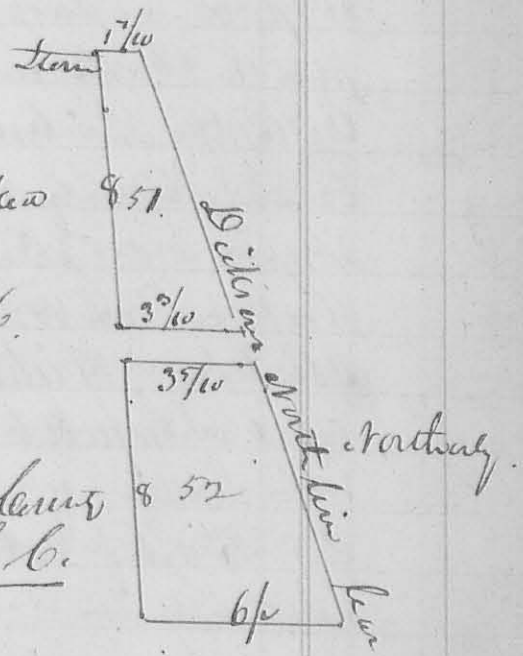
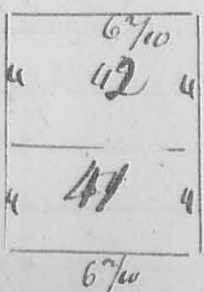
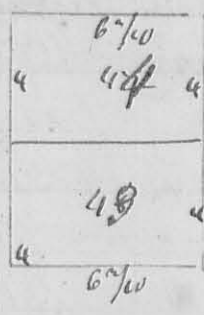


This plat represents a South Addition to
 the town of Legansville, and shows lots in the North
 as by the plat. The course of the line and the form as the
 former plat. see page 126. The lots in the South ad-
 dition point on the Sidney road as marked on the plat.
 the figures represent feet. there on the North part
 on the streets and alleys of the old town, and extend
 to Dickson's north line as marked in feet.

Sidney Road



Plantation stone as marked
 above.
 Surveyed June 9. 1826.
 James Bennett
 Mr Douglas chmn.
 Dan Hopkins Secy.
 Jan. 26



N^o 329

8382

Surveyed for Robert Wilson part of Survey N^o 12178
 water of Miami as follows Beginning at a Peach-
 Corn to Taylor and Marks, N. 6^{or} 9987
 & N to N^o 9988. thence N 12 W 160 poles, crossing a branch at
 9 poles N. Fork of Miami at 7 poles, to 2 Elm and 60. Ash-
 thence S 78 W 605 poles, crossing a branch at 119 poles, gone at
 285 poles to a Peach Ash and Ironwood in the West line of the
 Survey. thence N 26 E 157 poles to 2 beech & Elm original corn
 or thence N 78 E 405 poles, crossing branch at 30 poles, north pole
 at 282 poles, branch at 354. 356, & 358 poles, to the beginning Contain-
 ing 40 1/2 Acres.

J. Dunlap 3
 J. Peck 3 ch. cov. D. Hopkins Sec. Survey & L. C.
 June 13. 1836.

N^o 330

Surveyed May 16th 1836 for George Irwin part of
 Military Survey N^o in name of Mr Arthur as
 follows. Beginning at a Peach & Ironwood S. E. corner
 to land sold by Mr Arthur to said Irwin. thence S 78 W
 202 poles, crossing a Big road at 20 poles, branch at 148 & 150
 poles to 2 beech in the western line of the original Survey, and
 center of said line thence with said line N 12 W 118 poles
 crossing County road at 84 poles to 2 beech thence N 78 E
 202 poles, crossing branch at 22 poles, ^(crossed at 56) and on at 74 poles, crossing
 drop-run at 100. 103. 131 ahead of same at 177 poles to an
 Ash, Elm & Hickory - thence S 12 E 118 poles, crossing Big
 road at 86 poles to the beginning containing 150 Acres -

Alf. Loring 3
 W. Bayley 3 ch. cov. - D. Hopkins Sec. Survey & L. C.

Note This Survey should be in precedence the
 foregoing - compare date of survey.

N^o 391

June 1836

July 245

8383



W. of N. 5816 1/2
 W. of N. 5816 1/4
 W. of N. 5816 1/2
 W. of N. 5816 1/4

Surveyed June 4. 1836 for James Black
 the N^o 6 p. of S 35 7/4 R 13 W. as follows

Beginning at the North East corner of said
 Section. a white oak south 26 links hickory
 N 74 E 24 links now down, then west with
 the North line of the Section ending a sprain
 to a stake in a prairie (wood line) then
 N 14 W 40 do. 85 links to Stacy Locust 15

W. 519 6 21 links in a prairie then a celt 40 do. 12 links
 to Hickory 540 E 12 links and a line N 87 W 12 links (original
 corner here a white oak 12 L. S 78 W 4 Links same 12 L. N 70 W
 32 links, not found) then N 16 W 42.85 to the beginning. contain-
 ing 171 ⁶⁵/₁₀₀ ac.

George Curran 2
 Robert Laro 3 do. com.

Dan Hopkins, Co. Sec. G.

N^o 382

Surveyed July 11. 1836 for Sam^l Mason part of Military
 Survey N^o 4478. as follows - Beginning at a white oak sugar
 3/4 do. N W corner to Edward Mason's land then West 123
 poles to a stake, then North 8 poles to a sugar & Elm, then
 N 77 E 102 poles to a stake in the junefield Road, then in said
 Road ^{S 71 E} 95.7 poles to a stake, then South 78 poles to the beginning
 Containing 64 ⁷⁵/₁₀₀ ac.

Lep^r Millner Sam^l Mason Sec^r do. Sec^r Dan Hopkins, Co. Sec. G.

N^o 333

Surveyed July 12th for George Moots part of Military
 Survey N^o 4479 as follows. Beginning at Black Oak N E corner
 to Thomas Cathegton N^o as a prairie, then S 70 W 276 poles.
 passing a stem near two white oak ^{at 187 1/2} poles and ^{at 187 1/2} poles to a stem
 in a prairie, then S 28 W 203 poles passing a stem. Moots N E
 corner at 52 poles, to Thicker's original corner of the Survey, one
 of them now down - These lines were run for the purpose of establish-
 ing boundary between said Moots & Lewis & Sumner. at same
 time Surveyed for J. Wittels and Brother part of Sam^l Survey
 beginning as above then S 70 W 137 poles to stem be. oak and
 hickory N. oak, then N 70 W 16 1/2 poles to 21 aspen hickory.

July 1836.

then N70E 137 poles to a Stake in the original Line -
then S20E 14 1/2 poles to the beginning containing 1240/100 acres.
then in Armstrong }
Jeffrey William } do men D Hopkins Co Sur. I.C.

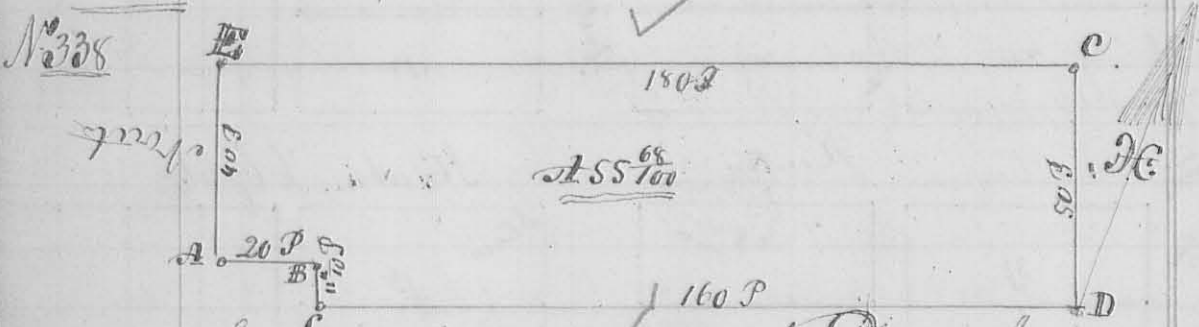
N^o 334 Surveyed for ^{James} ~~George~~ Grimes a lot of Land, commencing at James
McPherson as agent for Walter Tunn, Beginning at a Stake in
a Line in S. W. things North line of survey N^o 4479. then N70
E 109 poles to a Stake, come to Benjamin Long, then N21W
177 poles, passing 2 black oaks, originally the beginning come to
the survey at 108 poles to a Stake, then S70N 107 poles to 2
hickories, then N20E 178 poles to the beginning containing
1197 2/100 acres.
George Mott 3
C. Rand 3 do men D Hopkins Co Sur. I.C.

N^o 335 Surveyed for McAnis Roberts as follow part of Lyn Star
Lipps Survey N^o 3323 Beginning at a corner between John
Corwin and said Roberts, being S. E. corner to said Corwin about
Elm & Ironwood then N 70W 27 poles to a small Elm and oak
thence N80E 25 poles to a stake in a swamp, an oak 15 inches di-
ameter bears S57E 29 links, then S10E 130 poles to a post -
then S80W 102 poles to a Stake, then W. Elm Cherry and dog
wood S E corner of the survey, then N10W 102 7/10 poles to a
Oak and hickory, then N70E 187 poles to the beginning
Containing 128 - acres. at same time Surveyed as
follow. Beginning at S. E. corner of the original survey at little
Cherry and dogwood above named then N10W 102 7/10 poles
to Bar oak & Hickory - then N80E 118 poles to 2 oaks then
N10E 51 2/10 poles to Stake, then S80W 49 poles to a Stake, then
N10E 51 2/10 poles to a stake in the South line of the original
survey then with said line S80W 69 poles to the beginning
Containing 64 acres -
D Hopkins Co Sur. I.C.

August 3rd 4th 1836. ✓

The foregoing plat of North Alexander is located in lot N^o 4 of subdivision of Military Survey N^o 9975, and was surveyed Aug^t 3rd 4th 1836. as follows, the Course is N 10^o E crossing at right angles, Lots N^o 1 to 4 inclusive front on Kenton Street 3 rods by 12 back. N^o 5 to 8 inclusive front on same Street 3 poles extending back 12 poles. N^o 44 to 48 inclusive front on Richland Street 4 poles, and extend back to the west line of White Lane, as marked on the lines, and are partitioned into lots. The other lots are each 4 rods front by 10 back and contain each one quarter of an acre. Main and Kenton Streets are each 60 feet wide. Richland Street is 33 feet wide, and the Alleys each 16 1/2 feet. at the N. W. Corner of Lot N^o 13 planted a triangular stone with the point up, marked X. Lots N^o 20, 21 belong to Sam^l White, the others to White.

Proprietor
 Sam^l White 3
 Peter Crop 3 ch. men. Dan^l Hopkins Co. Surveyor 26



Surveyed August 2nd 1836 for David Johnston parts of Military Survey N^o 4494 as follows. Beginning at a Hickory and Red Oak, both now down, the stump of the standing planted a stone in letter A then S 20^o E 20 poles to a stone, then S 70^o W 11 1/2 poles, then S 20^o E 160 poles to a stone, then N 70^o E 50 poles to crossing a drain at 2 poles to a stone near two dog wood bushes. then N 20^o W 180 poles to a stone, a sugar and forked Mulberry, then S 70^o W 40 poles to the beginning, containing 55 6/100 Acres.

Benjamin Evans 3
 William Evans 3 ch. men Dan^l Hopkins Co. Surveyor 26

N^o 339

Survey for John Sharp part of Military Survey N^o as follows Beginning at a Gum & Sugar & White oak, S & White oak down, then S35E 420 poles to a Stone poplar Ash and Hickory, Ash & Hickory down, cross a Big road at 400 poles, then at 48E 398 poles, crossing Big road at 40 pole, Spring run at 176 poles, crossing daily creek to fork a buckeye in the bank of the creek, then N34 3/4 W 400 poles, crossing daily at 44 poles, and 103 poles to a Stone in a Saw - the original corner tree, all down, then S52 W 400 poles, crossing creek to the beginning containing 102 7/10 acres. Divide into two equal parts by a line beginning ^{at line marked on the} center of the Eastern line of the Survey, at a stake from which a Stone bears N47W 10 Links, then S50W 399 poles, to a Beech in center of the Western line of the Survey, and also Survey for Henry Scamman begin as above, then N34 3/4 W 60 1/2 poles, to stake 40 links from a hickory marked as a corner, then S50W 399 1/2 poles, to an elm & built about 100 poles north of the corner, and in the westerly line of the Survey - then S35E 60 3/4 poles to the center of the Survey on the line at a Beech, then with the division line a fence in N35E 399 poles, to the beginning containing 150 acres -

Saml. Kitley }
 John Ballinger } Ch. Carrier Dan Hopkins Sec. Sur. G. C.

N^o 340

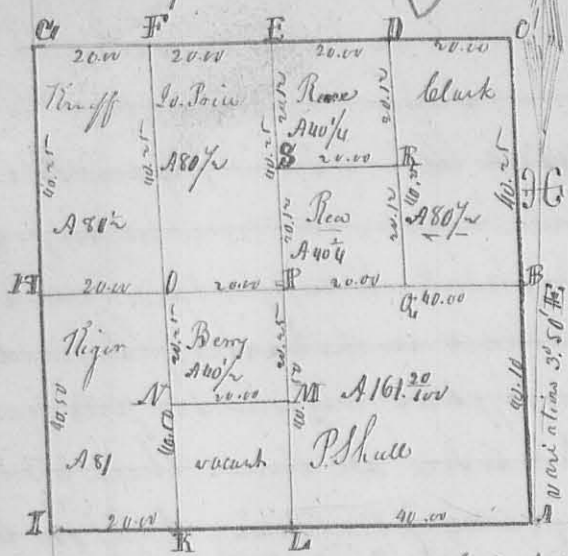
8386

Survey for Asher de Lyra part of Survey N^o 3323 as follows Beginning at a stake in the Sandusky Road then N80E 160 poles, to a Sugar, then N10W 71 1/4 poles, to a State Beech & Sugar then S80W 140 poles to a stake in the Sandusky Road, then with its meander to the beginning containing 69 7/10 acres. also for James Parkins as follows Beginning at the State Beech and Sugar above mentioned, in the north line of the original Survey, then with said line S70W 140 poles, to a stake in the middle of the Sandusky Road, then S18W 28 poles, and 80 poles to a stake then N80E 159 poles, to Beech and 4 Runways, then N10W 33 1/2 poles, to the beginning containing 33 1/4 acres.

Wm. Carnis }
 Saml. Hopkins } Ch. Sur. D. Hopkins Sec. Sur. G. C.

850
N^o 341
8387

S 21 T 5 R 8 E.



The annexed plat represents the survey and sub-division of S 21 T 5 R 8 E, made Sept. 9th 1836 for the persons who names are marked thereon. The beginning is at the S.E. corner, at 22. corner N 3° 50' W, and at right angle. Contents of each lot in the section, as marked on the plat.

Description of corners -

Section corner B. Bur Oak 15 S. D. S 40 W 24 1/2 links, and Bur Oak 12 S. D. N 44 E 25 links. C. Section corner. D. Ash 12 S. D. corner tree. E. Elm 6 S. D. N 14 E 7 links, do 5 1/4 W 33 links. F. Beech 20 S. D. S 85 E 25 1/2 4 Beech 20 S. D. S 85 W 38 links. G. N.W. corner of the section. H. Beech 22 S. D. S 69 E 22 links, White Oak 12 S. D. N 4 W 4 links. I. S.W. corner of the section. K. White Oak 5 S. D. N 60 W 21 links. Lynn 15 S. D. N 55 E 20 links. L. Elm 36 S. D. N 35 E 20, marked Bur. Oak 24 S. D. S 73 W 30 links, M. Bur. Oak 18 S. D. N 20 E 34 links, Lynn 58 W 25 links, N. Beech 22 S. D. N 56 E 4 1/2 links, do. 4 S 33 W 10 links. O. Ash 15 S. D. N 59 W 8 links, Lynn 15 S. D. S 39 E 10 1/2 links, P. Ash 12 S. D. N 85 E 38 S. Cedar 5 S. D. S 6 E 40 links. Q. Dogwood 3 S. D. S 33 W 3 links, dogwood N 41 W 22 R. Ash 8 S. D. N 40 E 14 links. Br. wood 4 S. D. S 89 W 14 S. Ash 8 S. D. S 86 E 18 1/2 links. do. 12 S. D. S 68 W 22 links.

Joseph Poire 3
Gadock Stephens } do. ex. Dan. McKim Co. Sur. J. C. Ohio

N^o 362
8169

Surveyed Sept. 16. 1836 for Daniel Hunt part of Survey N^o 3437 as follows Beginning at a stem near a Lynn and Elm, S.E. corner to J. P. Parkinson, thence S 10 E 81 poles to a stake in a County road, thence with said road S 79 W 99 poles to a stake, S 15 E 20 links from a large stem, thence N 18 W 83 poles with the East line of John Longwell's land to a stake about one pole from a small bush in the Southwesterly line of J. S. Parkinson's land, thence with said line N 80 E 106 poles to the beginning, Containing 5 1/4 acres
D. McKim Co. Sur. J. C. O.