

276.

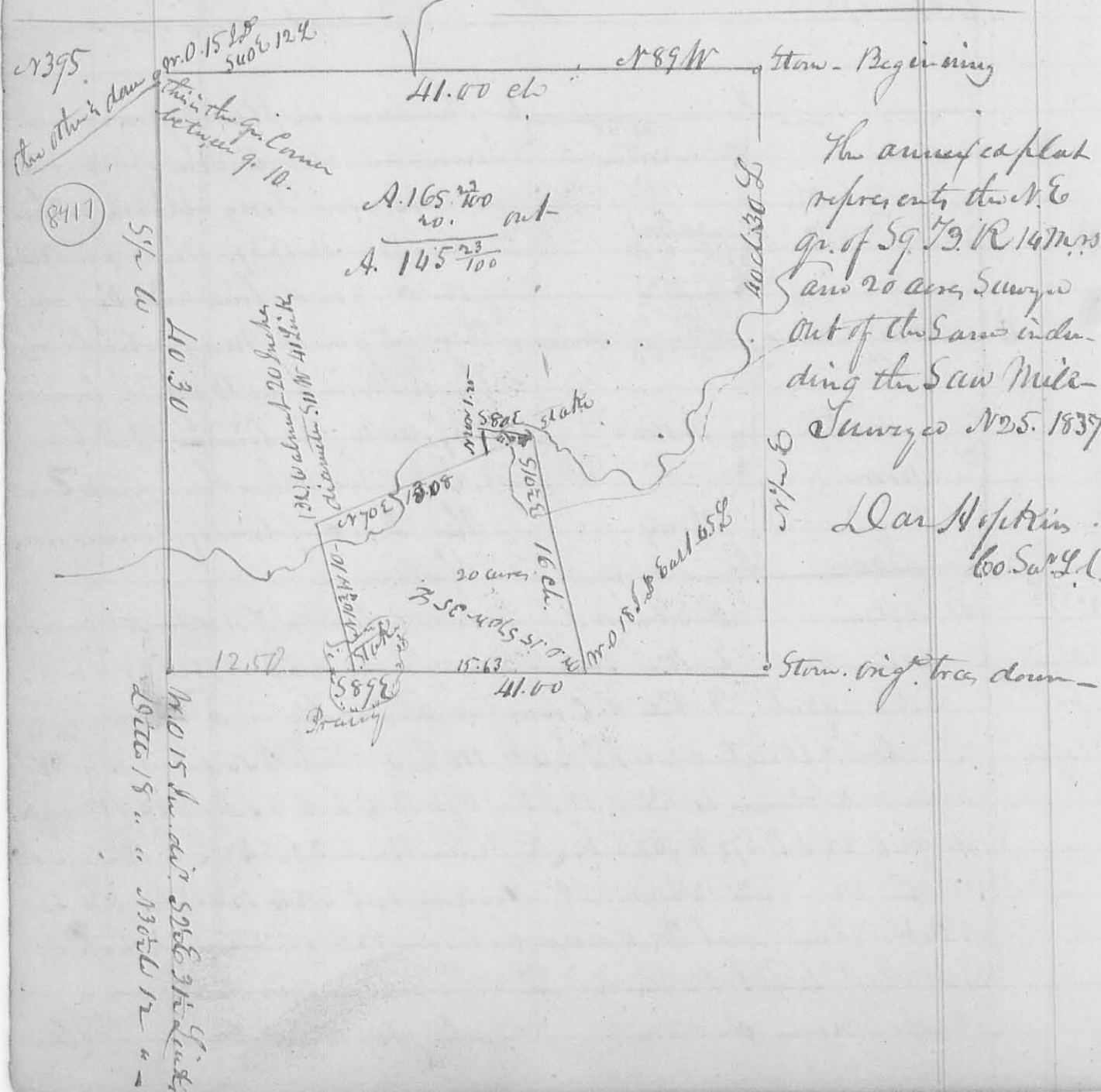
Nov. 1837.

N^o 394

Surveyed Nov. 17. 1837 for George Jones and Barton Patten
 as follows. Beginning at a Sugar tree N.E. Corner to George
 Jones, thence S 24 1/2° E 9 1/2 poles, crossing Big road to a stem
 near a Beech & Sugar tree, thence S 69° 15' W 13 1/2 poles to 2
 Beech, one down, the other dead, planter a stem - here
 also planter a stem for Jones, in running the last line at
 7 1/2 poles, and run thence to his beginning corner N 30° W
 1 1/2 poles, to Ch. Walnut-Elm Sugar, thence run to N 30° W
 7 1/2 poles to 2 Beeches in the line of James Monroe & Lewis
 then N 63° E 6 1/2 poles to the Sugar tree at the beginning of
 this survey.

S 65° W 5 1/2 poles
 from end of 9 1/2
 poles Sugar
 N 30° W 2 1/2
 Error in desc.

J. P. Monroe } Ch. Corn?
 Nathl. Monroe } Dan Hopkins Co. Sur. G. L.



N^o 396

(8278)

Surveyed Nov. 14. 1837 for Layton Pollock the 277
 SW quarter of 526th R. 18 m. N. S. as follows. Beginning at
 the S. W. Corner of said Section a Wh. Oak 12th D. 376 262
 and a White Oak 12th D. N. 53 W. 40th Link, thence North 38 ch 09
 Link, to a stem of Wh. Oak 12 inch dia. N 85 W 10 Link, and a
 Hickory 6th D. N 72 E 24 Link, thence S 87 E 40 chains to a stake
 in a prairie, thence S 3/4 W 37 ch. 63 Link, to a stem in the
 Center of the South Line of the Section thence with said Line
 N 89 W 39 ch. 50 Link, to the beginning containing 150⁴⁹/₁₀₀
 acres.

San Hopkins Co. S. W. L. C. O.

N^o 397

(8418)

Surveyed Nov. 28. 1837 for George M. Colbeck, part of
 Military Survey N^o 3439 as follows. Beginning at a Hickory
 Beech of White Oak South easterly, comes to Robert Pawan
 Survey N^o 3682, thence N 10 W 87 pole, to an Elm & Small Ash
 thence N 80 E 134 pole, ending a Branch at 24 pole to a stem
 in a prairie. Wh. poplar & Red Oak. thence S 4 W 46 pole
 to a Small poplar, thence S 37 W 32 pole, to a Stake thence S 3 W
 20¹⁰/₁₀₀ pole, ending a Branch at 2 pole to a Beech in the
 South line of said Survey, thence with said Line S 80 W 93¹/₂
 pole, to the beginning. Containing 54⁴⁴/₁₀₀ acres.

G. M. Colbeck Jr.

San Hopkins Co. S. W. L. C. O.

Good News. Bayly Downy ch & aw^o.

N^o 398

(8378)

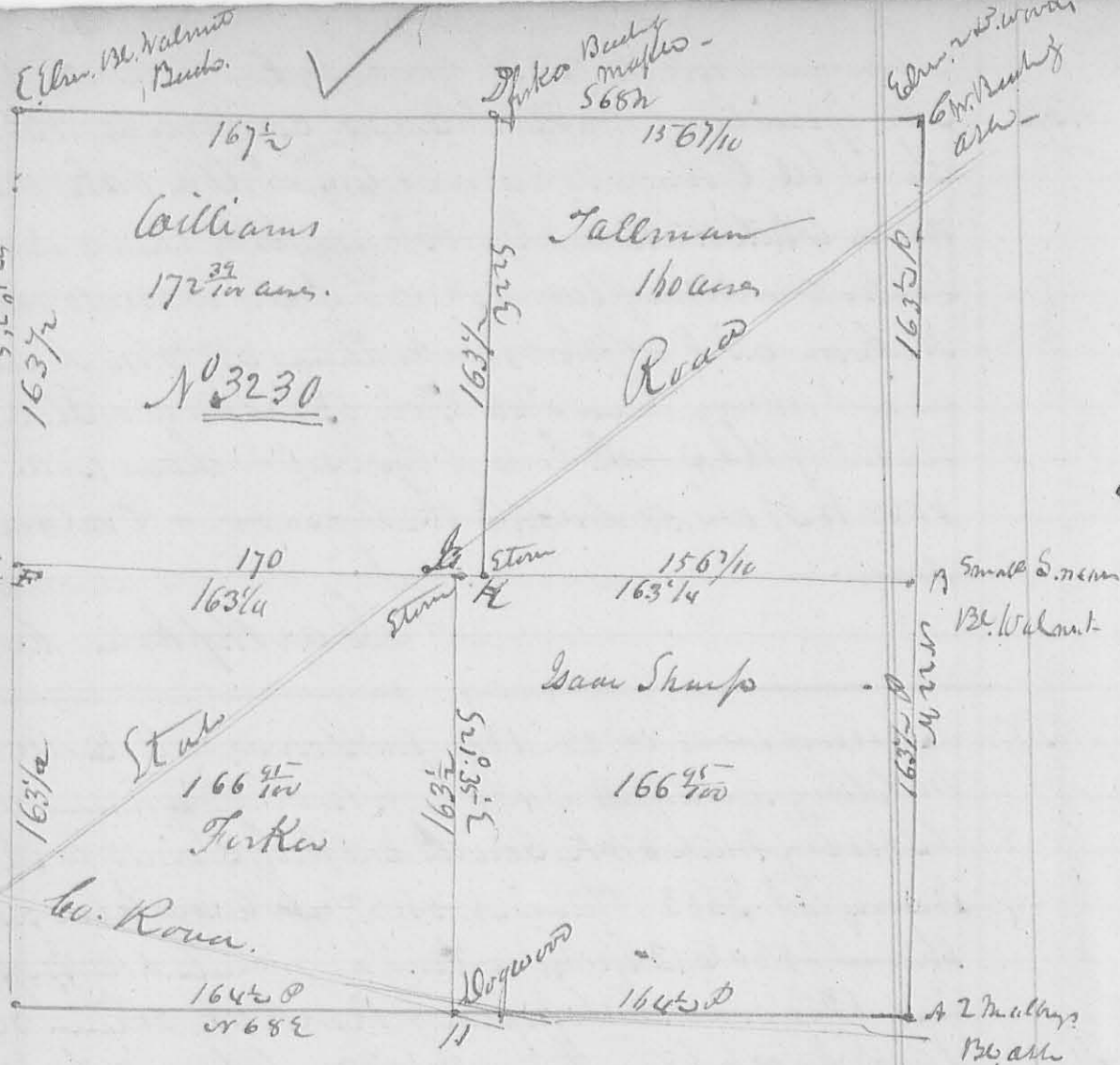
Surveyed Dec. 13. 1837 for W. Chamberlin part of the SW
 q^r of 537th R. 14 m. N. S. as follows. Beginning at the S. E
 Corner to Robert Morn 70 acres (a part of said q^r) at a
 stem in a prairie, thence with the south boundary of the
 Section S 89¹/₂ E 18 ch 89 Link to a White Oak 12th D. N 79 W 34
 Link & Hickory 10th D. N 18 E 32, thence North 40 chain
 25 Link to a White Oak 20th D. S 55 W 67 Link in the North
 Line of said quarter S. thence with said Line N 89¹/₂ W 18 ch
 89 Link to a Red Oak 8th D. N 77 E 16 Link, 12 in Oak 12th D
 S 17 W 52 Link N. E. Comes to said Morn 70 acres. thence with
 his East Line South 40 ch 25 Link to the beginning Cont^g 7¹/₂ acres

San Hopkins Co. S. W. L. C. O.

278

A. J. Smith.

no. 8419
399



Surveyed Dec 22. 1837 for Isaac Shump & others.

Bruce Blair.
Survey: Shump & Co. con.

Dan Hopkins Co. S. W. L. 60

No. 400

8419

Surveyed Dec. 30. 1837 for Joseph Dickin part of Military Survey No. 322 as follows. Beginning at the S. E. C. of John Robt. p. at 212 ends of poplar. thence in South N. line thence North 48 1/2 pole, crossing a branch at 4 p. goes at 3 1/2 to Beech & poplar thence East 7 1/2 pole, crossing branch at 3 1/2 to a Hickory, 3 Beech & Ash thence South 48 1/2 pole to Hickory, Ironwood & Ash thence West 7 1/2 pole, crossing a run at 4 pole, to the beginning Cont. g. 22 area. also

Survey for John Robt. Beginning in Joseph Dickin's west line corner between John Robt. & Cook thence South 8 pole, crossing a branch at 8 pole, to a stake in a swamp, thence East 16 1/2 pole, to a stake in a run, a Hickory, fine all Ash, thence down said run with 1/2

its Meander to a White Elm, Water Beeds & Sugar. 279
the Sugar on the Eastern bank of the Creek, thence North
105° to pole to a Lyrus Ironwood & Sugar in the N. Line of said
John Robt land, thence East with said line 22 pole,
crossing a branch at 18 pole to the beginning. Cont^d 9.15 acs.
Dan Hopkins Co. Sur. S. C.

N^o 401

Surveyed Jan^y 25. 1838 for Richard Clarkson Survey N^o 9913
as follows. Beginning at a Stone S.W. c to said Survey, the
Corner tree 3 beeches, all down and decayed, thence N 78 E 95 pole
to Lyrus of Beech (Beech down) thence N 11 W 169 pole to 2 small
Beeches & Ironwood, in N. Line of said lot thence S 78 W 95 pole
to a Black Ironwood & Beech tree thence S 11 E 170 pole to
the beginning. Containing 100⁷/₁₀₀ acs.
Lepus Hill Dan Hopkins Co. Sur. S. C.

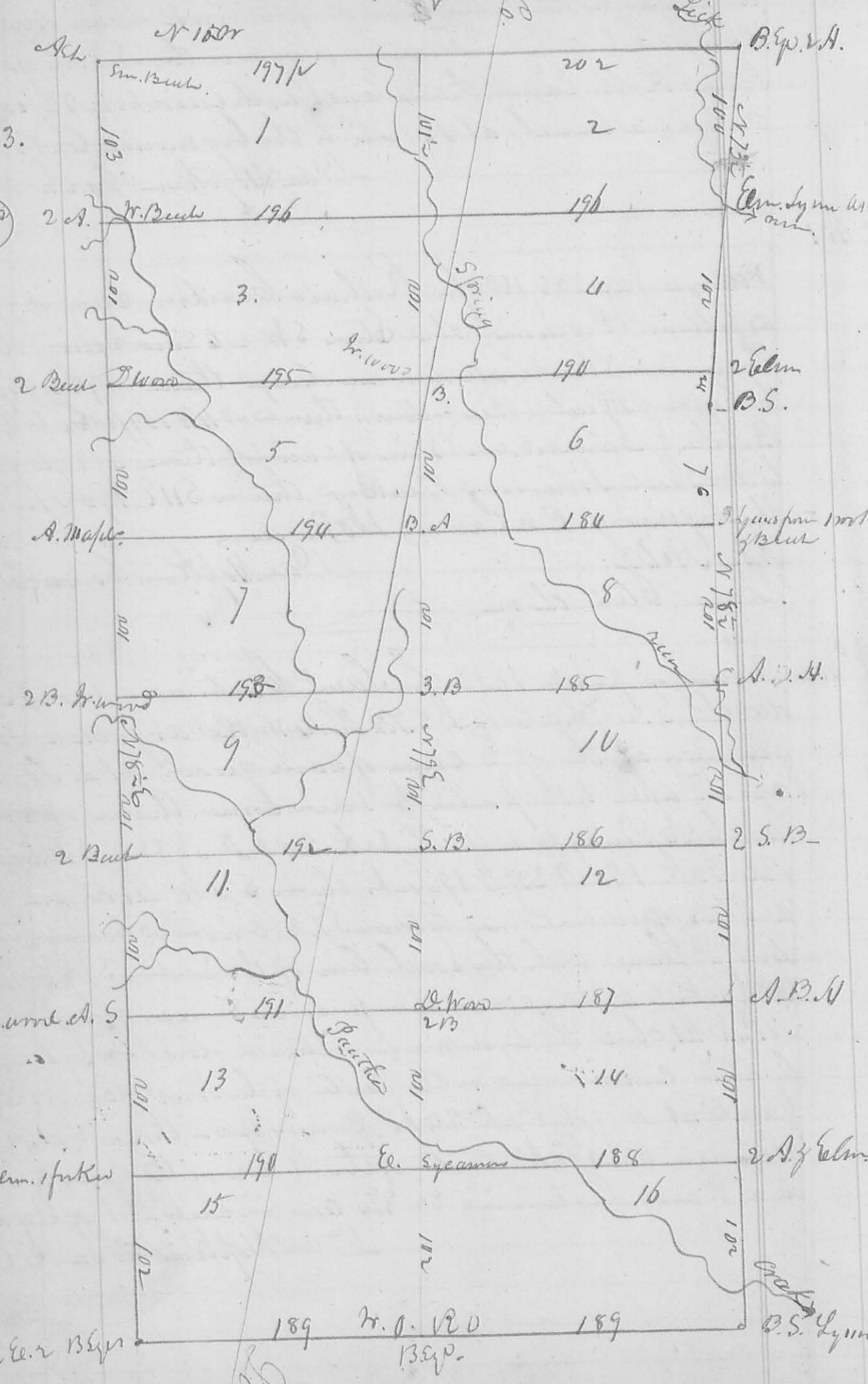
N^o 402 Surveyed Jun^y 1838 for Saml Carter and Jacob Sey-
den the S. E. quarter of 58.53 R. 14 m. 0. 0. as follows. Be-
ginning at the N. E. Corner of said quarter at a Stake
agreed upon by the parties for said corner, thence N 89 W
40 ch & 4 Links to a White Oak 20 L. D. N 85 E 26 Links
130. Oak 18 L. D. S 37 W 59 Links, thence S 3/4 W 41 chain to
a Stone quarter corner between S. 8. Origin'd bearing true
down - thence with the South line of the Section S 89 E 40 ch
13 Links to a Stone agreed upon for corner to said quarter thence
N 13 E 41 ch to the beginning - thence divides the same
by a line commencing on the center of the South line of the
quarter at a 130. Oak 24 L. D. corner tree - thence N 14 E
41 chain to a Stake center of the N. Line of the quarter S.
in a Prairie. Containing 82⁹⁸/₁₀₀ acs. in each Lot or half ac.
Dan Hopkins Co. Sur. S. C.

Military Survey N. 10 2 39



N. 403.

8422



Q. S.

N^o 404

8423

Surveyed March 7. 1838 for John Mitchell part 281
of Military Survey N^o 9993 as follows. Beginning at the NW
Corner of said Survey at a Red Oak & Beech. thence S 12 E
100 poles crossing a branch at 90 poles to 2 Ironwood from one root
and small Beech top. thence N 77 E 80 poles. crossing creek at 16 p.
Big wood at 28 p & same branch at 47. 53. 62 p & 69 p to a Stone
thence N 11 W 100 poles crossing Big wood at 68 p to Dogwood & 3 B.
in the N Line of said Survey thence S 79 W 80 poles to the beginning
Containing 37 acres.

David Hopkins, C.S.

N^o 405

8424

Surveyed March 8. 1838 for William Clark part of Military
Survey N^o 9932 as follows - Beginning at the center corner of
the South line of said Survey at 2 Beech & 2 Sugar. thence
N 11 W 105 poles. crossing big wood & small branch to a Beech and
Ironwood corner to David Kirkland. thence N 79 E 52 poles to Beech
Hickory and Elm another of said Kirklands corner. thence N 78 E
70 poles. crossing a Big Road to 2 Beech. thence S 11 E 106 poles.
passing a corner at 6 poles to 2 Beech & Sugar in the South line
of the Survey. thence with said line S 79 W 122 poles to the beginning
Containing 81 ^{1/2} Acres. Also at Samston

Survey Beginning at Center of the East Line of said
Survey at 2 Blue Ash. 2 Beech & Beech top. thence with the
division line of said Survey S 79 W 125 poles to 2 beech in a Co. road
corner to J. Kirkland. thence South with said Kirkland E
line 96 poles to a Beech Hickory & Elm. thence N 78 E 70 p
to 2 beech. corner to W. Clark. thence S 11 E 6 poles to an Iron
wood thence N 79 E 80 poles to a Stake in the East Line of the
Survey. thence with said line N 11 W 100 poles to the beginning
Containing 81 ^{1/2} Acres.

David Hopkins, C.S.

N^o 405

8384

Surveyed March 10. 1838 for Saml. Hallow part of
Military Survey N^o 4678 as follows. Beginning at a
Stone in the East Line of Midway Run, land corner to G. Kunkle
thence East 58 poles crossing run at 26 poles to 3 small Ash
Hickory & low. Walnut. thence South 55 poles crossing
branch at 23 poles to small Ash. Cherry & Hickory - thence

282

thence West 58/100, crossing a branch at 25 poles to a Stake in Knopf's said Lin. thence with said Lin North 55.2/100 poles, crossing branch at 25 1/2 and on at 36 p. to the beginning. Containing 20 acs. Peter Knopf, J. F. Knemkopf ch. men.

Dan Hopkins Co. S. T. C. O.

N^o 406

8490

Surveyed March 14. 1838 a Lin between William McV^o Sts and David Shields, Heir. as follows.

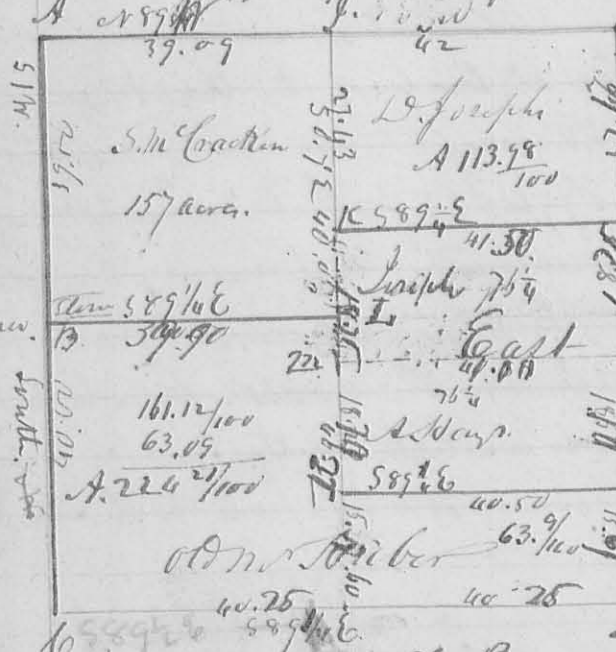
Beginning on the line dividing S. 34. T. 5. R. 13 N. W. 1/4 from north to south. and N. 69 ch. 37 Links from a stem in the center of the South line of said section at a White Oak 24 1/2 ch. 12 Links thence S. 87 1/2 E. 62 ch. 65 Link to a stem in the East Lin of said section and N. 69 ch. 37 Links from J. P. Miller N. W. corner -

Dan Hopkins Co. S. T. C. O.

N^o 407

8426

Survey and Subdivision of S. 74. R. 13 N. W. 1/4 for Saml McFrank on Dan. Joseph, Alfred Hays and Horner made March 23rd 1838



1838 made by James Carter ch. men.

Description of Corners.

By A. N. W. Corner of the section the original bearing true down planted stem and marked White Oak 15 1/2 D. 55 7/8 61 Links - B. Oak 12 D. 32 1/2 18 links planted stem. C. SW Sect corner. planted stem in a Stake and D. Bur. 0 12 152 1/2 17 Links. E - Jack Oak 8 1/2 D. 589 1/4 65 Links. F. Bur. Oak 6 1/2 D. 137 1/4 8 Links ditto G. 56 1/2 1/4 64 Links. G. Stem. H. Jack Oak 10 1/2 D. 110 E 11 Links. ditto 6. 1/2 D. 523 E 9 Links. I. Stem. orig. tree standing a white oak 20 1/2 D. 542 E 29 Links. K. Stem. I. Mickay 6 1/2 D. 115 1/2 15 Links Jack oak 3 1/2 D. 564 E 18 Links. m - Bl. Oak 15 1/2 D. 130 E 29 Link. an oak 500 1/4 15 Links -

Dan Hopkins Co. S. T. C. O.

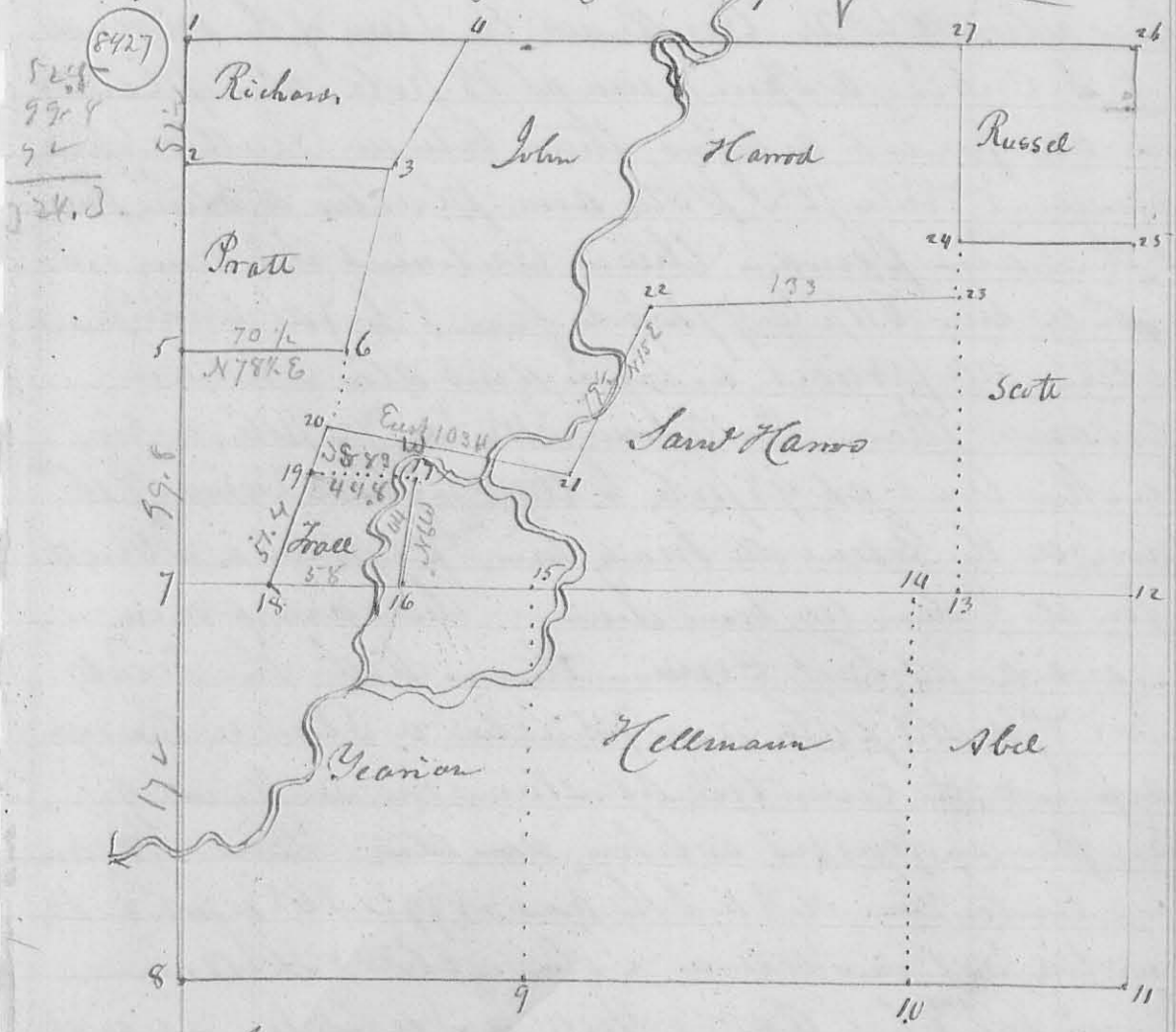
N^o 408

293

Surveyed March 27. 1838 for William Douglas and
 Jacob Keith part of the South West and South East quarter
 of 59⁷/₂ R 14 M. 1 S as follows. Beginning at the Southeast
 Corner of the NW q^r. of said Section. then N 89° W 3 ch 78 links
 to a Hickory tree in diameter South 7 links, then S 13° W
 5 chain 94 links to a Stake. then S 86° E 8 chain 4 links
 to a stone in a prairie. then N 12° E 6 chain 56 links to a
 Stake. then N 89° W 3 chain 96 links to a Stake. then
 N 12° E 78 links to the beginning, which is North 9 links from
 a white oak stump about 8 feet high. the interior
 quarter Section Corner in said Section. Containing Acres.
 Dan Hopkins T. S. L. C.

N^o 409

Military Survey N^o 10307



In pursuance of an act entitled "An Act to enable the
 holders of land within this State to perpetuate testi-
 mony relative to their land," Surveyed on March 28.
 & 29. 1838, and planted corners, in Military Survey N^o 10307
 as represented by the foregoing plat, the figure showing
 the points at which corners were planted. Beginning at

the NW Corner of the Original Survey in the Linn
 State Road when a County Road crosses in Road
 the Corner tree here being all cut down planted a
 Stone from which the S. E. Corner of the Deeds Making
 house bears N 68 W 10 1/2 pole; Orient John Manon
 John Abel Chain Camin, Sam Manon Mark, and
 Saul Richard & Calvin Pratt, South 11 1/2 East 52 1/2 pole
 in the Linn Road to figure 2 representing the Corner between
 Pratt & Richard, planted a Stone from the same
 person as before; thence N 78 1/2 E 91 pole to 3. Planted a
 Stone here in the presence of the same Individuals as before
 thence N 17 1/2 E 60 1/2 pole to 4, in the North line of the block
 planted a Stone, all present as at the other corner -
 thence returned to 2. Continued the Survey of the original
 line to 5, crossing a Spring run at 18 pole, at 5 planted
 Stone all present as before; thence between Pratt & John
 Manon N 78 1/2 E 70 1/2 pole, and planted a Stone, ^{at 6} present
 the same person. Thence continued the Survey of the
 original line S 11 1/2 E 99 1/2 pole, from 5 to 7 at which planted
 a Stone, all present as before, and also Adam
 Meorian; thence continued S 11 1/2 E 172 pole, crossing
 Cherokee Creek at 98 pole, to the original corner of the
 Survey in the Greenville tract line, planted a Stone, the
 original corner tree being down - the same person
 present as at last corner - thence with the Treaty
 line N 79 E 144 pole and planted a Stone in the eye
 of a point, the corner trees all standing. See figures 9.
 Same person present as before, and also John Adelman,
 thence continued crossing the road N 79 E 165 1/2 pole to 10,
 planted a Corner between John Abel & Adelman -
 between two white Oaks & Hickory, same present as at
 the last corner. Continued 90 1/2 to the SE corner of the
 Survey and planted a Corner Stone in the presence of the same
 Individuals, the white Oak called for here is now dead and
 in a decaying condition, 2 black standing, thence N 11 1/2
 174 pole to 2 Sugar & white Oak, one Sugar entirely rotten
 & gone, planted a Stone, same person present as before

52, 5

99.8

172

then 579W 72 pole, planted a Stone between Samuel
 Hanon, Thomas Scott in John Abel, N. S. W.; then
 present. Continued 579W 187 1/2 pole, planted a Stone
 between John Abel & John Helmann, present same person.
 present. Continued 579W 162 3/4 pole, crossing Chuska to a Black
 Oak & Buck Eye; planted a Stone in the presence of the same
 Chain Carrier & before, and also John Helmann, Samuel
 Patrick & Samuel Hanon. Continued 579W 53 pole,
 crossing a run at 54 pole, planted a Stone S. E. Corner to Fall
 in yearian, line. Present the same person as at last corner, and
 also Calvin Pratt; then N. 6 W. 44 pole, crossing a bend of
 Creek at 20 pole, planted a Stone at the foot of a small
 White Oak Fall, N. E. L. Present as before also Fall and
 Abel & King. Then returned to Fall, N. E. Continued
 the line 579W 58 pole, crossing Chuska at 3 pole, & planted
 a Stone on the West side of a Big road, Fall, S. W. (see the
 plat figure 18. present Chain Carrier, Fall, Prato, Semi-
 an, Thomas Scott Esq. & Helmann & Samuel Hanon.
 then N 9 1/2 E 57 1/2 pole, to Fall, NW Corner in a Co. Road, planted
 a Stone J. Scott Esq. about. then continued 99 1/2 E 21 pole
 and planted a Stone between Samuel & John Hanon. Pre-
 sent. Present the same person as at Fall NW. Also also
 George W. Jackson; then East 103 1/2 pole, crossing a run at 13
 pole, ditch at 20 pole, a bend of the Creek at 41. a Ditch at 44
 Creek at 48 & 30 pole & Spring run at 70 pole, to a Stone, planted
 in presence of the same person as at last corner, from this Stone
 a Cottonwood 8 Inch diameter beam N 31 W 38 Sinks, then
 N 15 E 79 pole, crossing the Creek at 56 pole, planted a Stone, pre-
 sent Chain Carrier Calvin Prato Samuel Hanon & Adam
 Yearian; then N 77 1/2 E 133 pole, came to a deep pond at 78
 pole, which is 22 pole wide, planted a Stone in the line of Thomas
 Scott, present the same person as at last corner, also Thomas
 Scott; then with Scott's line N 10 W 23 pole, planted a Stone
 between Rufel & Scott, present as at last corner, then between
 Scott & Rufel N 78 E 71 pole, planted a Stone near a New Oak
 mark as a Corner in the East line of the Survey. Present the
 same person as at the two last corners; then with said line

286

N 101st 90th poles to the N. E. Corner of the Survey, in a County Road 3rd of the Corner tree, here are cut down, and one dead, Planted a Stem in the presence of the Chairman, Colon. Prate Samuel Hanna & Adam Scarian, thence with the North line of the Survey N 79th 68th poles to Ruptel, at N Corner, Planted a Stem, Present as at last Corner, also John Ruptel. Continued the measure of this line, crossing Cherokee at 156th p., 163th p. & 172th p., from the N. E. Corner of the Survey, reaching the 4th Corner planted (see figure 4.) at 282 poles. - The dotted line on the plot were not measured, and the figures show the manner in which the Survey was made -

L. Can. Hoptkin. Co. Sur.

N. 410

(8477)

Surveyed March 31. 1838 for John Hanna part of Survey N^o 10307 as follows Beginning at a Stone SW Corner of the Survey in the Lima Road, thence N 11th W 79 poles, crossing Cherokee at 77 poles to a Stone, thence East 88th pole, crossing the Creek at 72th pole, 75 & 81 poles, to a Locust and further Elm thence S 11th W 67 poles, to a White Oak & Red Oak in the Great Limber in a County Road, thence with said Line S 80th W 87 poles to the beginning Containing 40 Acs.

L. Can. Hoptkin. Co. Sur.

N. 411

(8478)

Surveyed for John Hanna agent for McArthur, part of Military Survey N^o 10631. Beginning at a Small Buckeye Sugar tree & Walnut on the West bank of the Creek N. E. Corner to Puddledon Survey N^o 9909 & South knot to Richard Kenna Survey N^o 10041, thence with Kenna line N 78th E 214 poles, crossing Rich. Creek at 42 poles, and a Big road at 116 poles to a Stone N W Corner to John Wolf Survey of 100 Acs, thence with his West Line S 12th 170 poles, crossing a branch at 100 poles, ^{120 & 125 p.} to 30 Sugar trees, SW Corner to said Wolf's said Survey, thence S 78th W 215 poles to 2 Sugar & Beech, thence N 12th W 170 poles, crossing Creek at 54 poles to the beginning Containing 440 Acs. - (410)

March 31. 1838

L. Can. Hoptkin. Co. Sur.

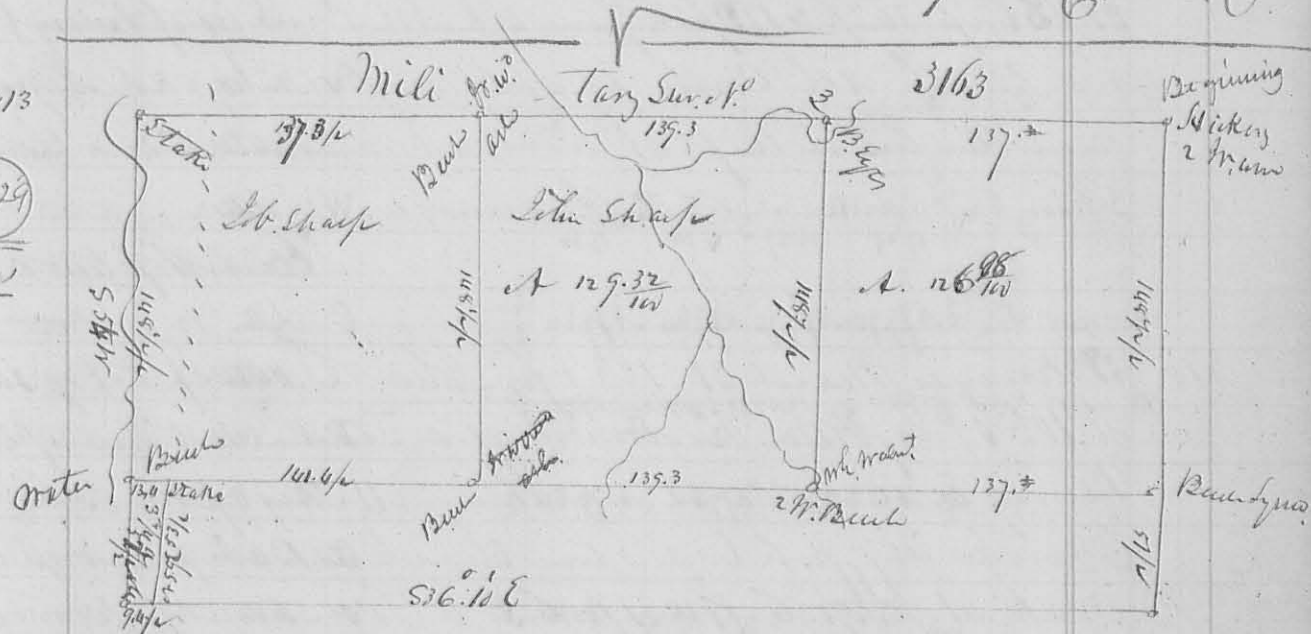
N^o 412

Surveyed April 10th 1838 an out lot adjoining 287 to Middlebury. Beginning N 22^o W 35 Links from the North westerly Corner of Lot N^o 102; thence N 47^o East 8.94 chains to a Stake; thence S 42^o E 4.47 chains to a Stake; thence S 49^o W 8.94 chains to a Stake; thence N 42^o W 4.47 chains to the beginning. Containing 4 Aers.

Dan Hopkins C. Sur. S. C.

(8271)

N^o 413



(8429)

Erw

Surveyed April 11. 1838 for Heidy of Kentucky -
John Surman
John Sharp et al.
D Hopkins C. Sur.

414

Surveyed April 12. 1838 for Doct. Mt. Land part of S 34. T 4. R 14 N. W. Beginning at a Stake 20 feet South of the line of Buckingham here, thence S 17^o E 6 chains to a Stake. Come to John Marguin. And Peter Lister, thence with Lister line S 78^o W 6 ch 67 Links to a Stake; thence N 1^o E 6 chains to a Stake 20 feet from said Buckingham; thence S 89^o E 6 chains 67 Links to the beginning. Containing 4 Aers.

D Hopkins Sur. S. C.

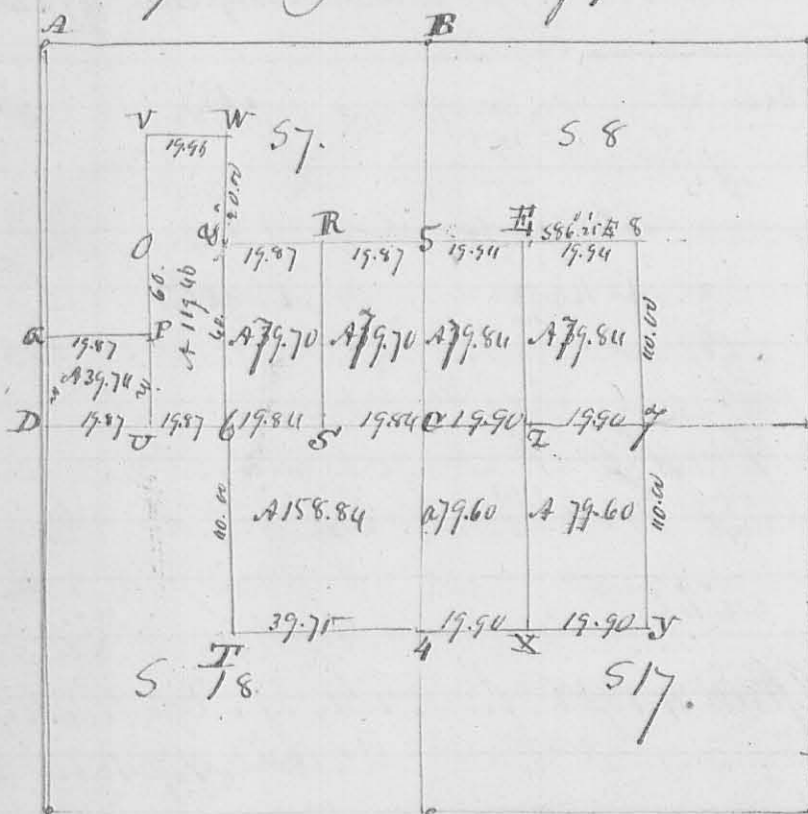
N^o 415

Surveyed April 26th 1838 for Georg. Sulzemburg & others. Sects 7, 8, 17. 18 & N 2^o & S 2^o of part of 51. of T 7 S of R 7 & 8 E. the part of 51. Begin at the S. E. Corn. origin at bearing true, an Elm 10 Links N 57^o W 27 Links a Buck 6 Links S 38^o E 30 Links thence N 3^o 51^o W 39.86 chain to a Sycamore 48 h. d. S 57^o W 11 Links a Gray ash 24 Links S 85^o E 31 Links - thence S 86^o 10' W 35 ch 8 Links to a Gramp ash 15 Links Corn. tree - this Corn. tree is the

(8436)

Records of Survey.

Western bank of Little Muckinip - thence $S 3^{\circ} 10' E$ 40 chains to a Red Oak 18 in. Diameter $S 83^{\circ} E$ 8 Links - a Sugar tree 15 in. $S 74^{\circ} W$ 7 Links - thence $N 86^{\circ} 10' E$, ^{35 chs.} ending a creek to the beginning. Containing 139.91/100 acres. For remainder of this survey see the following connection of plots.



Description of Corners

- V Hickory 5 Inches dia. N 62 W 15 "
- ditto 6 " " S 40 E 24 "
- W ditto 2 " " S 65 W 15 "
- Beach 18 " " N 65 E 25 "
- O ditto 12 " " S 48 W 6 "
- ditto 24 " " S 70 E 25 "
- P Red Oak 15 " " N 34 W 21 "
- Bur Oak 18 " " S 29 W 10 "
- Q Beach 14 " " N 86 W 98 "
- R ditto 15 " " N 21 W 17 "
- S Gray ash 6 " " S 21 E 10 "
- T Red Oak 18 " " S 28 W 17 "
- ditto 6 " N 48 E 6 "

- 5. Beach 16 Inches diameter N 28 E 18 Links, W. Oak 6 Links, Sugar 16 Links
- H Red Oak 22 " " S 82 E 29 " Elm 10 " N 72 W 20 "
- 8 S. Ash 15 " " S 23 E 4 " S. Ash 15 " N 62 W 17 "
- D North West Corner of Section Number 18 - S 10 to East -
- O S. Ash 15 " " N 62 E 17 " Bur. 18, S 47 W 29 Links
- W. Ash 18 " " S 75 W 17 " Beach 14 " N 70 E 4 "
- 6 Beach 14 " " N 66 E 22 " Log 4 " S 60 W 8 "
- S Hickory 10 " " N 6 E 6 " S. Ash 8 " N 86 W 14 "
- C Beach 30 " " N 55 W 25 " Beach 10 " S 58 E 24 "
- Z ditto 24 " " S 80 W 16 " Cherry 4 " N 65 E 24 "
- 7 Beach 10 " " N 63 E 22 " Log 4 " S 40 W 8 "
- I Red Oak 8 " " N 50 E 28 " Elm 6 " S 55 W 33 "
- 4 Beach 24 " " N 78 W 14 " Red Oak 6 " S 73 E 30 "
- X Hickory 15 " " S 11 E 22 " Beach 20 " N 31 E 15 "
- J Spruce 5 " " N 83 W 5 " Spruce 5 " N 57 E 17 "

John Maggart 3
 Mrs. Maggart 3

W. H. Johnson & Co. (Ct.)

N. 415. Cont. in no. 1.

Trails Recorded

N^o 416

Survey

8431

Survey April 30. 1838 for Daniel K. Colvin part of Military Survey N^o 9989. Beginning at an Ash South East corner to the original Survey (also 2nd run) thence N 11^o W 100 poles to a Sargo Ash; thence S 78^o W 80^o poles to a Beech & Sugar thence S 11^o E 98 poles to a stake thence N 77^o E 80 poles to the beginning containing 2nd run.

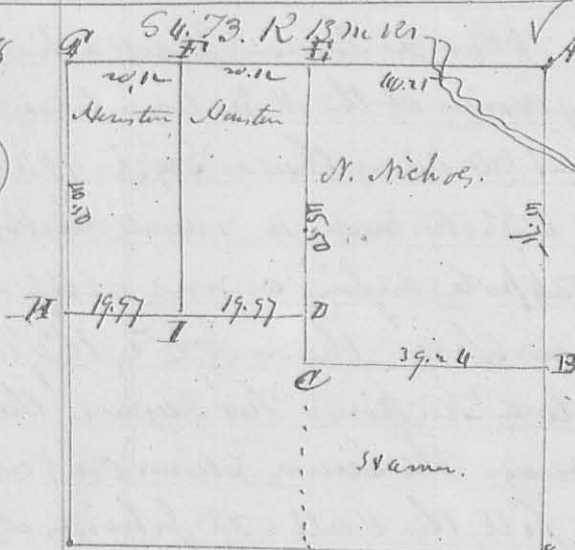
D. Hoffman A. S. W. S. C.

N^o 417

Survey May 29. 1838 for Andrew Roberts part of Survey 9889. Beginning at a Sargo & Beech Patent call for a stake thence N 11^o W 200 poles crossing a Creek at 128 poles to 2 Sugar (New Cut down) being the beginning call of the Patent thence N 78^o E 107 poles back at 20 poles to a Beech & Cypress, the Cypress down; thence S 10^o E 200 poles to a Beech thence S 7^o E 105 poles crossing run at 14 poles back at 45 & 60 poles to the beginning.

D. Hoffman A. S. W. S. C.

N^o 418



Corner.

- A. Wh. Oak 12 S. D. N 68^o W 30 Links
- title 10 " " N 55^o E 20 "
- B Stam in a drain
- C. Wh. Oak 20 S. D. N 80^o W 33. "
- D Bl. Walnut 3 " " S 59^o E 17^o "
- Bl. Oak 8 " " N 57^o W 61 "
- title 12 " " N 58^o E 50 "
- Hickory 15 " " N 17^o W 33 "
- F Stake.

G Red Elm 5 S. D. South 27 Links down and gone. (plate-stone)
 Bl. Walnut 10 S. D. N 57^o W 23 Links.
 H Lack Oak 6. S 48^o W 57 Links. Elm 12 S. D. N 80^o E 61 Links (stone)
 I Stam & Wh. Oak 12 S. D. N 30^o E 57 Links and White O 15 S. D. N 61^o W 95
 then Beginning at C. thence ~~Call~~ ch to Stam & white oak 20 S. D.
 N 13^o E 75 Links; thence N 24^o E 16 ch to a Stam - thence N 52^o E 10.50 Links
 to a Sargo Stam; thence N 45^o W 7.88 ch to a Bl. Walnut 12 S. D. S 29^o E
 37 Links; thence on a Walnut 12 S. D. N 29^o E 42 Links - thence

to 2 Bech & a Sugar (Sugar down), then S 78 1/2 W to a Bech edge
then S 10 1/2 E 200 poles to a Bech S E E to 98 89; then S 78 1/2 W
105 poles to the beginning (this Survey was made by request of
Mr. J. the Agent but it interferes with other Surveys south
of it, one of which is its elder, and which it of course cannot
sup.

D Hopkins C.S.D.

222

8435

Surveyed Sept. 6. 1838 for Thomas Spencer to fill the calls of
his deca. part of Military Survey N^o 9950 as follows. Beginning
at the SW C. of Maiden Stouphells Lot. at a Stone, then
N 11 1/2 W 126 1/2 poles to a Stone marked T.S. then S 78 1/2 W 63 1/4 poles
to a Stone & two therefrom one root & Crab Apple, then S 11 1/2 E 126 1/2
poles to a Stake in a field (this line for 60 poles in length, taken at right
about 3 poles wide off & 13 W going lot) then N 78 E 63 1/4 poles to
the beginning.

223

8262

Surveyed Sept. 13. 1838 for John Dickson 10 Lots determined in
the South Addition to ⁵ ^{addition} ^D Logans with as follows. Beginning at the
S E corner, come to Lot N^o 47 of the old or first South addition, west
side of Center Street, then S 29 1/2 W 60 feet crossing Sidney Road, plan
red a Stone for the beginning, then putting said road and extending 8 feet
back on a course of S 35 E & running N 55 W 4 poles each, laid off 4 lots; again
commencing S 55 E 60 feet from the stone, laid off 2 lots same & made
an alley east of them 10 feet. Continued two other lots same size, and
made White Oak Street 3 poles wide, then copied said street and
made two other lots same size, in all 10 Lots.

William Mearn

Thos Ellis chmn

D Hopkins C.S.D.

N^o 224

8436

Surveyed for James Ritchey 150 acres of Land, as follows. Begin
ning at a Lime Stone marked + at the SW Corner to Military Survey
N^o 9929, the original Corner Oak Elm which lay all down. Then N 11 1/2 W
100 poles to a Stone in the Lima Road then S 78 1/2 W 240 poles to
a Stone, from which a Gray Ash 18 inches in diameter bears N 5 E 32
Links, then S 11 1/2 E 100 poles to a Stone, then N 78 E 240 poles to the beginning

Containing 150 Aers. Also Surveyed 75 aers part of said Survey N^o 9929 beginning as aforesaid; then N 11¹/₂ W 200 poles to a Stone in a prairie then N 78¹/₂ E 60 poles to a Stone; then S 11¹/₂ E 200 poles to a Stone; then S 78¹/₂ W 60 poles to the beginning. Also Surveyed for William Laughhead

Laughhead

Beginning at 3 Elm and a Stone N W Corner of said Survey; then S 11¹/₂ E 150 poles to a Stone in the Prairie; then N 78¹/₂ E 80 poles to a Stone in a Prairie; then N 11¹/₂ W 150 poles to a Stone in a prairie in the N line of the Survey; then S 78¹/₂ W 80 poles to the beginning Containing 75 Aers. Also

Watt

Surveyed for John Watt. Beginning at a Stone in the West line of said Survey N^o 9929, and N 11¹/₂ W 170 poles from its SW c. then S 78¹/₂ W 285 poles crossing a Big wood at 82 poles to a Stone & S m all picks; then N 11¹/₂ W 70 poles to a Stake, N 78¹/₂ E 185 poles to a Stone; then N 11¹/₂ W 185 poles to a Stone to Black & Elm; then S 78¹/₂ E 100 poles to a Stone in the West line of Survey 9929; then with said line S 11¹/₂ E 175 poles to the beginning Containing 190³/₄ Aers. Also Surveyed for John Gabbe

Gabbe

Part of said Survey 9929 Beginning at a Black White Oak & Elm in a County Road. SE Corner to James Conroy by Carter to Brighton & Maughlin; then S 78¹/₂ W 230 poles to a White oak & Mulberry in Ritchys Eastly line Corner to Adcock Carter; then N 11¹/₂ W with Ritchys line 121 poles passing Ritchys Corner at 117 poles to a Stake in a prairie; then S 78¹/₂ E 20 poles to a Stake; then N 11¹/₂ W 50 poles to a Stone Corner to William Laughhead; then N 78¹/₂ E 87 poles to a Stone; then S 11¹/₂ E 140 poles to a Stone; Corner to Alex andw Creighton; then N 78¹/₂ E 202 poles to a Sugar; then S 11¹/₂ E 25 poles to the

beginning Containing 60 Aers; also for said Gabbe Beginning at W^m Laughhead's N. E. Corner a Stone in a prairie in N line of the original Survey; then with said line N 78¹/₂ E 20 poles to a Stake; then S 11¹/₂ E 40 poles to a Stake. Corner to Creighton; then S 78¹/₂ W 20 poles to a Stake in Laughhead's line; then with said line N 11¹/₂ W 40 poles to the beginning

Creighton

Containing 5 Aers, and for Alex andw Creighton part of said Survey. Beginning at a Sugar, NE Corner to John Gabbe; then N 11¹/₂ W 40 poles to a Black Oak, Corner to James Maughlin; then S 78¹/₂ W 100 poles to a Stone another of said Maughlin's Corner; then N 11¹/₂ E 48 poles to a Stone in a Prairie; then S 78¹/₂ W 8 poles to Stone in Prairie; then N 11¹/₂ W 100 poles to Stake in a prairie; then S 78¹/₂ W 40 poles to Stake (the preceding Corner are all Corners to J^o Maughlin) then N 11¹/₂ W 60 poles to Stake Corner to Gabbe 5 Aers.

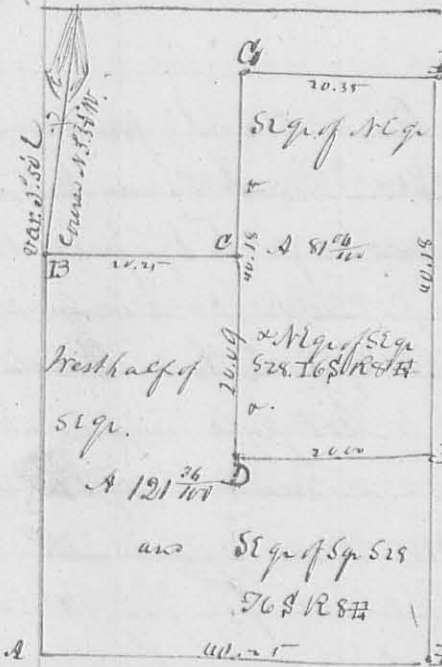
Maughlin.

thence S 78° W 20 poles to a Stake; in NW Lawhead in, thence with said
 line S 11° E 110 poles to a Stake; in SE corner; thence N 74° E 8 poles to a Stake;
 thence S 11° E 146 poles to a Stake, Corner to Oak; thence N 78° E 202 po-
 les to the beginning. Containing 120 Acres. also part of same Survey for
 James Maughlin, Beginning at a small Bur Oak, Hickory on
 the bank of a small drain; thence S 11° E 48 1/2 poles to a Stake near a large
 Black Oak; thence S 78° W 140 poles to a Stake; thence N 11° W 45 1/2 poles
 to a Stake; thence S 78° W 8 poles to a Stake; thence N 11° W 100 poles to a
 Stake; thence S 78° W 40 poles to a Stake; thence N 11° W 100 poles to a Stake
 in the N Line of the Survey; thence with said line N 78° E 84 poles to
 the Stake N W Corner to William Wallaw; thence S 11° E 189 poles crossing
 a run to a Stake; thence N 78° E 29 poles to a Stake; thence S 11° E 11 poles
 to a Stake; thence N 78° E 76 poles to the beginning. Containing
 120 Acres. at same time Surveyed for Leida Miller part of the Survey
 adjoining this original Survey in the West is follow. Beginning at a Stake
 SW Corner to William Wood; thence N 11° W 100 poles to a Stake; thence
 S 78° W 63 7/8 poles to a Stake, Ash & Hickory; thence N 11° W 70 7/8 poles to a Stake
 Southwardly about one pole from a small hickory; thence S 78° W 56 7/8 poles to
 a Stake & two Sugar; thence S 11° E 170 7/8 poles to a hickory, Bur Oak, Elm
 Red Oak & hickory; thence N 78° E 120 7/8 poles to the beginning. Containing
 120 Acres. Surveyed for Leida Miller
 L. A. Depkin Sur. L. C. O.

Miller.

N^o 425.

(8437)



This Survey was made Sept. 1838 for James Simpson
 & William Artw. in 528, 76 & 188, Linton Rivers
 Description of corners.

- A Beech 16 In. diameter S 44 W 62 Links
- ditto 16 " N 65 E 35 Links
- B White Oak 24 " diameter S 26 W 25 Links
- Beech 8 " " N 4 W 9 "
- C ditto 12 " " S 17 W 8 "
- D Hickory 15 " " N 57 E 18 "
- E Elm 3 " " N 86 E 9 1/2 "
- ditto 4 " " N 78 1/2 W 5 " "
- F Hickory 18 1/2 " S 84 W 3 Links, Red Oak 16 1/2 " N 61 E 9 " "
- G South 6 corner of the section; Red Oak 48 1/2 " S 63 E 15 " "
- H Ash 3 2/2 " N 45 W 9 Links; Red Oak 18 1/2 " S 69 W 33 Links -
- Black 8 2/2 " N 52 E 15 1/2 Links -

L. A. Depkin Sur. L. C. O.

Survey No. 3, 1838 for Casbolt & Roberts part of Survey
 113 R 14 M^{rs}, as follows. Beginning at a hickory, 11th SW
 Corner town between 517 & 23; thence S 7/2 W 40 ch. 50 links to SW Corner
 of 517. Corner town White oak 18th SW Out down. Thence East
 40 ch 50 links to a stem White oak 18th SW S 58 W 35 links to White
 Oak 10th SW N 17 W 139 links - thence N 7/2 E 80.50 chain to a stake
 in a prairie. Thence N 89 W 40.50 links to Corner between 517, 18, 23. 4
 thence West 20 chain to a stake in a Creek Center of N line of N
 7/2 of 523. thence S 7/2 W 40.50 chain to a stake Center of the South
 line of said pr. sect. thence E 60 chain 25 links to the beginning,
 Containing 408^{7/10} acs.

D. N. Perkins Co. S. L. C. O.

427.

8438

Survey No. 6, 1838 for Joseph Reed for the purpose of Marking
 Conveyance, no calculation of contents being required. Beginning
 at a stem in a County Road in the southerly line of Survey No. 570
 thence with said Road S 57^{1/2} W 27^{1/2} poles to a stem, thence N 7/2 W 122 to
 pole 2 dogwood; thence N 57^{1/2} E 56^{1/2} poles to a stem; thence S 67^{1/2} E 17^{1/2}
 poles to a stem in a County Road thence with said Road S 18 W 59
 poles to a stem, thence S 12 W 40^{1/2} poles; S 9 W 18^{1/2}; S 32 W 37^{1/2} poles to
 the beginning

428.

8439

Survey No. 7, 1838 for ———— Reed & Broth, part of Survey
 No. 11, as follows: Beginning at the Small West Corner of said Sur-
 vey 9970. at a hickory & Gum, thence N 78 E 195 poles to a hick-
 ory & Elm, thence N 12 W 405 poles crossing N. Fork of Miami at 18th SW
 to a Buck & two G. woods. thence S 78 W 195 poles to a Buck, N. W
 Corner of the Survey; thence South 12^{1/2} W 405 poles crossing N. Fork
 of Miami at 70 poles to the beginning. Containing 49^{5/10} acs.
 And at same time laid off on the North West of said Survey 158^{7/10}
 as follows. Beginning at 3 G. woods. S 16 E 230 poles from the NW L. thence
 thence N 78 E 110^{1/2} to a stake near a dead Gum; thence N 12 W
 230 poles crossing N. Fork to an Elm & 2 acs. in the N line of the
 Survey, and 110^{1/2} poles from its NW L.

D. N. Perkins Co. S. L. C. O.

N^o 429

8438

Survey Nov. 1. 1838 for M^r Allen to his camp to Joseph
 Reed part of Survey N^o 4570. Beginning at an old Elm & Maple
 (all now decaying) thence N 37 3/4 W 144 poles to a Stone in a Co.
 Road from whence a Sugar 8 in. diameter bears S 37 3/4 E 532.
 thence S 8 W 43 7/10 poles to a stone in a Road: S 18 W 84 poles to a Stone:
 S 12 W 40 7/10 poles to a Stone: S 9 W 18 poles to a Stone: S 32 W 37 7/10 poles
 to a Stone, in the ^{eastly} line of the Survey. thence with said line
 N 57 1/2 E 177 1/4 poles containing acres (more or less)

D. Hopkins C^o Sur^r & C.

N^o 430

8440

Survey Nov. 1. 1838 for Sam^l Reed part of Survey N^o
 9740 to find the corner called for in his deed: Beginning at
 2 Sugar & Red Oak & Large Rock in the West line of 4570.
 thence S 37 E 89 poles to 2 Sugar, ash and an Elm down ^{marked}
 Stone: S 75 1/2 W 126 poles to a Stone: ^{N 77 1/2 W 5 poles to a Stone} ~~N 77 1/2 E 101 1/2 poles to a Stone~~
 in the ~~North~~ ^{East} line of the Survey in a County Road: thence with said
 Road & line of the beginning: no calculation required. - this
 Record merely made to preserve the notes.

D. Hopkins C^o Sur^r & C.

431

8435

Survey Dec 4. 1838 for O^r Warner the West part of the SE q^r of S 4
 T 3 R 13 W R. as follows: Beginning at a White Oak 200 N 80 W 33 S in
 also a Stone SW corner to Benjamin Nichols Jr. & South's chain from the NW
 Corner of said q^r. thence S 89 1/2 E 25.73 chain to a stone White oak
 24 inches diameter S 81 W 135 S in k^t: thence S 7 1/2 W 35.50 to a Jack oak
 4 in. S 13 E 64 S in k^t, & Stone, in the south line of the Section: thence with said
 line N 89 1/2 E 35.43 chain to a stone the original corner tree between S 30 1/4,
 both given: thence N 1/4 E 35.94 chain, to the beginning, containing 9 1/10
 acres.

D. Hopkins C^o Sur^r & C.

432

8441

Survey for James Newman (Missouri) the E 1/2 SE q^r S 16 T 3 R 13 W R. Beginning
 at John Newman's NW corner thence West 20.25 to a Rock 18 in. West 4 S in k^t
 Dogwood S 54 E 16 S in k^t: thence S 2 W 44.40 S in k^t to a Hickory 15 in. S 38 W 21 S in k^t
 S Oak N 85 E 20 S in k^t: thence East 20.25 S in k^t to SE corner sub. thence N 1/2 E 6 1/4
 38 S in k^t to beginning contg. 8 1/2 ac.

D. Hopkins C^o Sur^r & C.

296

Magnetic Mer. var. 30° E

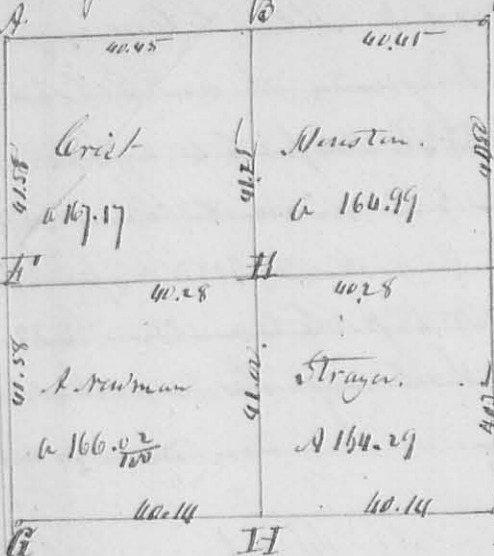
Description of Corner.

S10.73113

m. 128.

N^o 433

8442



- A Hickory 12 L. S. 11 W. 21 S. (down).
- ditto 12 L. S. N 26 W 30. (down) planted Stam.
- B White Oak 15 L. S. S 47 E 23 Links.
- ditto - S. N 80 W 15 Links.
- C Corner tree all down. Stam planted.
- D Jack O. 6 L. S. 20 S 48 W 5 Links & Stam.
- Elm 12 L. S. N 80 E 61 "
- E White O. 15 L. S. East 7 "
- ditto O. S. N 14 W 17 "
- F Buckskin 8 L. S. 55 W 31 "

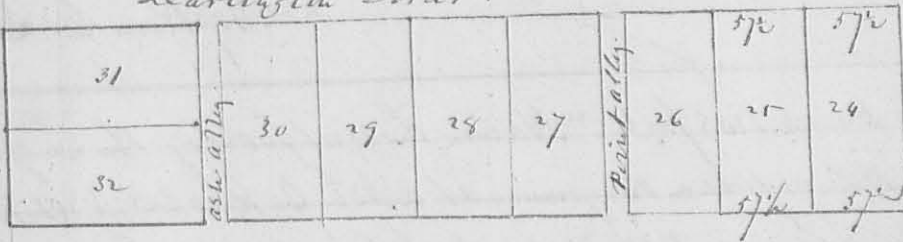
a White Oak 20 L. S. N 80 E 57 Links, + Stam - C Buck O. S. S 5 E 3 Links. Cherry 18. 1 24 W 19 S. H Sycamore 15 L. S. S 89 E 52 Links, + Stam. cap of creek - I. S. E Corner of Sect. Bearing tree all decayed. at same time Strayer for N. Strayer. Beginning at D. thence East 12 chains to Red Oak 18 L. S. E. Corner thence S 1/2 W 25 chains to a 12 inch Walnut 3 L. S. Corner tree, thence West 12 chains to a Dogwood 6 L. S. Corner tree, thence N 1/2 E 25 chains to the beginning containing 30 acres. Surveyed Dec. 4, 5 & 6th. L. S. S. P. C. O.

Charlinton Street.

434

8443

Liberty Street.



The foregoing plat represents an addition to Chambers addition to Quinay made by Chambers Jan. 1st 1839. The survey continues from the former addition, on the same course, the lots all being 4 poles front by 8 poles back, excepting N^o 24.5 which front only 5 1/2 feet.

L. S. S. P. C. O.

435

8444

Survey Jan. 1st 1839 for Man. Lov. Chambers, part of the 1/4 quarter of S 28.73.12.13 m. R. as follows: Beginning at a Buck 6 L. S. S 15 W 7. and Buck 6 L. S. S 88 E 11 Links East of the SW Corner of said q. 280 ch. thence N 1/2 E 11.7 chains to an Ash 3 L. S. East 24 links. Buck Oak 15 L. S. N 11 W 17 Links thence East 17 chains to a Buck 8 L. S. N 18 E 25 Links White Oak 48 L. S. N 45 W 7 Links, thence S 1/2 W

11.76 chain to a Black 18 S D N 62 W 10 Links. Black 15 S D N 88 E 11 Links then West 17 chains to the beginning containing 20 acres -
 Thence from the White Oak & Black corner, N 7 E 9.42 chain to Black 18 S D N 62 W 4 Links; thence West 17 chains to a Black Ash 8 S D N 60 E 15 Links ash 4 S D 26 Links; thence S 1/2 W 9.42 chain to an ash 3 S D East 24 Links, Bar Oak 15 S D N 110 W 17 Links; thence East 17 chains to the beginning containing 16 acres -

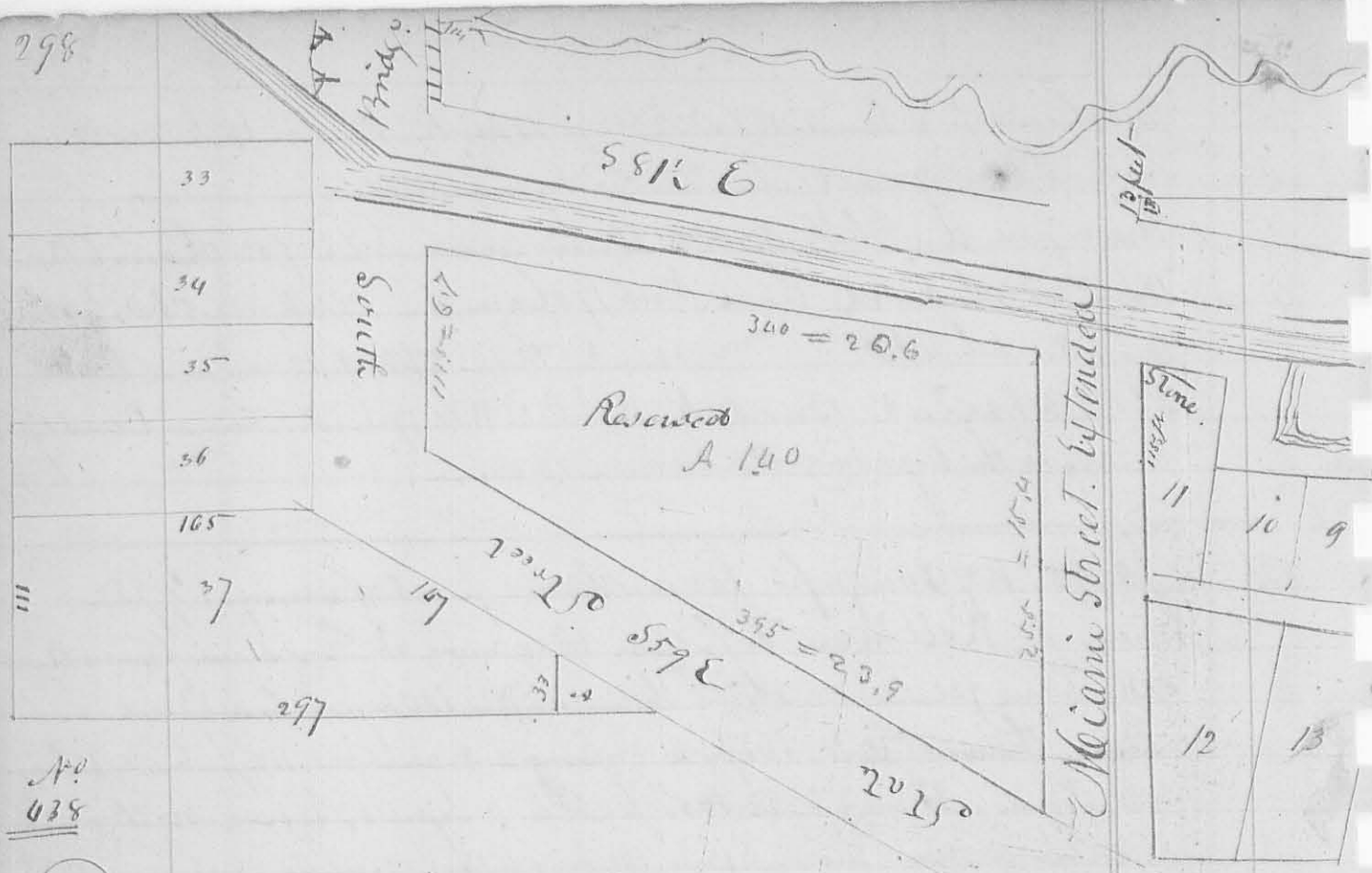
436
 (8443)

Surveyed for James Hanrod, part of Survey N 9952 in name of Robt Meam as follows. Beginning at Ford Lym, from 1 Root both down, planted a stem, thence N 78 E 100 1/2 pole to a Black ash stem, thence N 12 W 165 pole crossing a branch at 112 1/2 to an Elm and Lym. thence S 78 W 100 1/2 pole to a Lym & Sugar, with bank of a large run, thence S 12 E 165 pole to the beginning containing 103 2/100 acres.
 D. Hopkins S. D. C. O.

437
 (8446)

Surveyed for Henry Ramer January 28. 1839 part of Survey N 4682. Beginning at two Sugar & Poplar both down, thence N 37 W 196 pole to R. Oak Poplar & Lym, thence S 25 W 33 pole, passing 3 Black 77 1/2 corner to Henry Ramer at 195 pole, (Stem & 2 Sugar) to two Sugar, Lym & Elm (all down) thence thence S 65 E 48 pole to 2 Lym, cut down, thence N 53 E 270 pole, passing a stem at 138 pole to the beginning, containing 215 acres: a gap for the stem and 2 Sugar, passed in the 2nd line, at 195 pole & S 65 E 60 pole to a Black; thence at S 3 E 88 1/2 pole to a Lym & Black, thence N 1/2 W 74 pole to a stem & poplar, thence N 80 W 70 pole to 3 Black, passed as above at 77 pole, thence S 25 W 118 pole to the beginning. (83.78) acres.
 of one more cut: S 55 E 111 pole to stem paper. 3
 in the closing line of foregoing 215 acres.
 D. Hopkins S. D. C. O.

A 63.56 + 67.66 + 83.78 = 215.



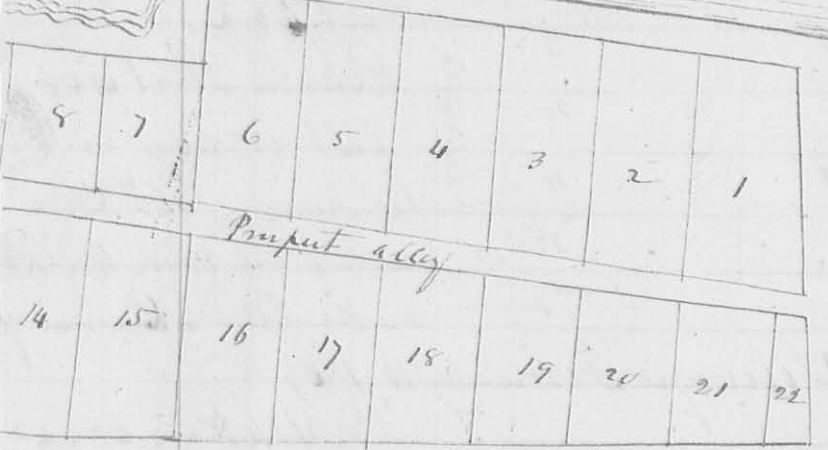
A:
638
8443

Note: This Survey should have been Run to the 633.
but was not taken.

The foregoing plat Represents Heriman's Addition to Quincy made Dec. 15th 1838, Lots N^o 1 to 6 inclusive front on Canal Street, (which is 77¹/₂ feet wide) 50 feet, and extend to Prospect alley 115¹/₂ feet, (the said alley being 16¹/₂ feet), N^o 7 to 10 inclusive front on the Basin 50 feet, and extend back 66 feet, N^o 11 front Canal Street 45 feet, extending with Miami Street of the old town, extending 115¹/₂ feet, and is 27 feet wide in the alley, N^o 12 is 77 feet in the alley, and 47 on Walnut Street of the old town, N^o 13 to 21 inclusive front on Prospect alley 50 feet, and extend to Walnut Street, N^o 22 front the alley 20 feet extending on Poplar Street 78¹/₂ feet, N^o 23 to 28 inclusive front Canal Street, 50 feet, and extend as marked, 33 to 36 inclusive front State Street 50 feet, extending back due West 165 feet, N^o 37 as described, A is not numbered, therefore not considered as part of the plat, Canal Street N^o 81¹/₂ N^o from its eastern end, and all the lots fronting on it, extend at right angle from it - A W Corner of N^o 11, is a true Stone, thence N 81¹/₂ W 28 pole finds the corner between N^o 33 & 34. Canal Street is 49¹/₂ feet on south side of the Canal, N side is 12 feet and ten parts. D. Nipkin S. L. C. O.

Meigs River

297



Walnut Street of da Fiddi

Poplar Street da. town boundary

439. Survey for George ^{Land} Naylor February 11. 1839 part of
 S34.74. R 14 M R. thence S 1 W 4.18 chain to stake in a
 pond thence S 89 1/2 E 4.18 ch to a White Oak 18 L & S 87 1/2 E
 18 Links; thence N 1 E 4.18 chain to a White Oak 18 L & W
 N 33 E 7/8 Links; thence N 89 1/2 W 4.18 to the beginning Contain-
 ing 1 1/4 acres. L. N. Naylor & Co. Surveyors

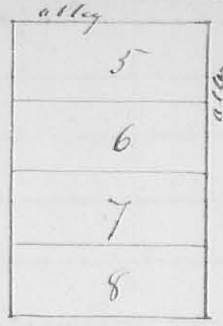
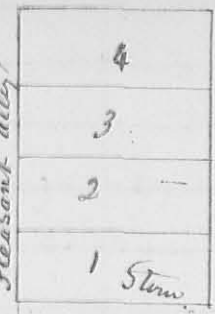
440. Survey February 12. 1839 for Jacob F. Powell, Beginning
 S 89 1/2 E 52 pole from the NW Corner of S34.74. R 14 M R.
 thence S 2 W 15 chain crossing a branch at 47 pole to a stem; thence
 S 89 1/2 E 3.33 chain to a stem, from which a hickory 4 L & W
 bears N 10 W 20 Links; thence N 2 W 15 chain, crossing a run
 to a stem in a Big Road; thence N 89 1/2 W 3.33 chain to the
 beginning. Containing 5 acres, part of the North
 West quarter of said S34. —

8447

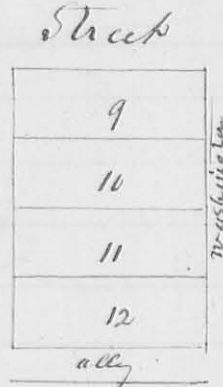
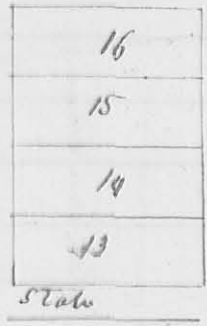
L. N. Naylor & Co. Surveyors

0300

N^o 440



Wayne



Temperanceville
 Located on Survey N^o 9838.
 Andrew A. Wilson
 Proprietor.

Lot N^o 1.

Surveyed February 10. 1839

L. Hopkins, C. S. & Co.

Notes.

Lots N^o 1 to 16 inclusive
 are 3 Rods front by 8 back
 17. 18. 19 & 20 are same
 front - & 12 rods back.
 Liberty Street is 66
 feet wide. its corner
 is N 88 E. -
 Wayne Street is 66
 feet wide. its
 corner is S 62 E. the
 alleys are each 16 feet
 wide. Stem & W corner of

N^o 441.

(8442)

Surveyed February 23rd 1839 for Daniel Shaw. Beginning
 at John's E. Corner, a small black Walnut on the side of
 the creek or Run; thence North 25 chain to a white oak
 18 L. 20^o S 44 E 19. Hickory 5 L. 20^o S 82 W 30 Links in the North
 Line of the Section; thence N 89 W 25 chain to the quarter
 Section Corner between sq. 10. a Wh. Oak 15 L. 20^o S 40 E 15
 Links other bearing true down. Thence South 40 chain 30 L
 to the South West Corner of the q. S. of which this is part.
 Thence S 89 E 12 chain 50 links to a Stake in a Prairie; thence
 N 10 3/4 W 10 ch. to a black Walnut 20 L. 20^o S 11 W 40 Links - then
 N 70 E 13.08 chain to a Stake; thence N 20 W 1.25 chain to a
 Stake; thence S 41 E 4.24 to the beginning. 81 1/2 acres.
 pt. at E. q. sq. 13. R 14 N. R 14 - also Beginning at
 the S. E. C. of SW q. of S. 37 30 R 14 N. R. Thence N 89 1/2 W
 25 chain to a Wh. Oak 18 L. 20^o S 60 W 18 Links a white oak
 12 L. 20^o N 35 E 30 Links - thence N 4 E 20 chain to a Stem; then
 S 89 1/2 E 10 chain to a Stem. Thence N 1/2 E 20 chain to a Stem.
 then S 89 1/2 E 15 chain to the N E Corner of said q. then
 S 1/2 W 10 chain to the beginning Containing 80 acres.

L. Hopkins, C. S. & Co.