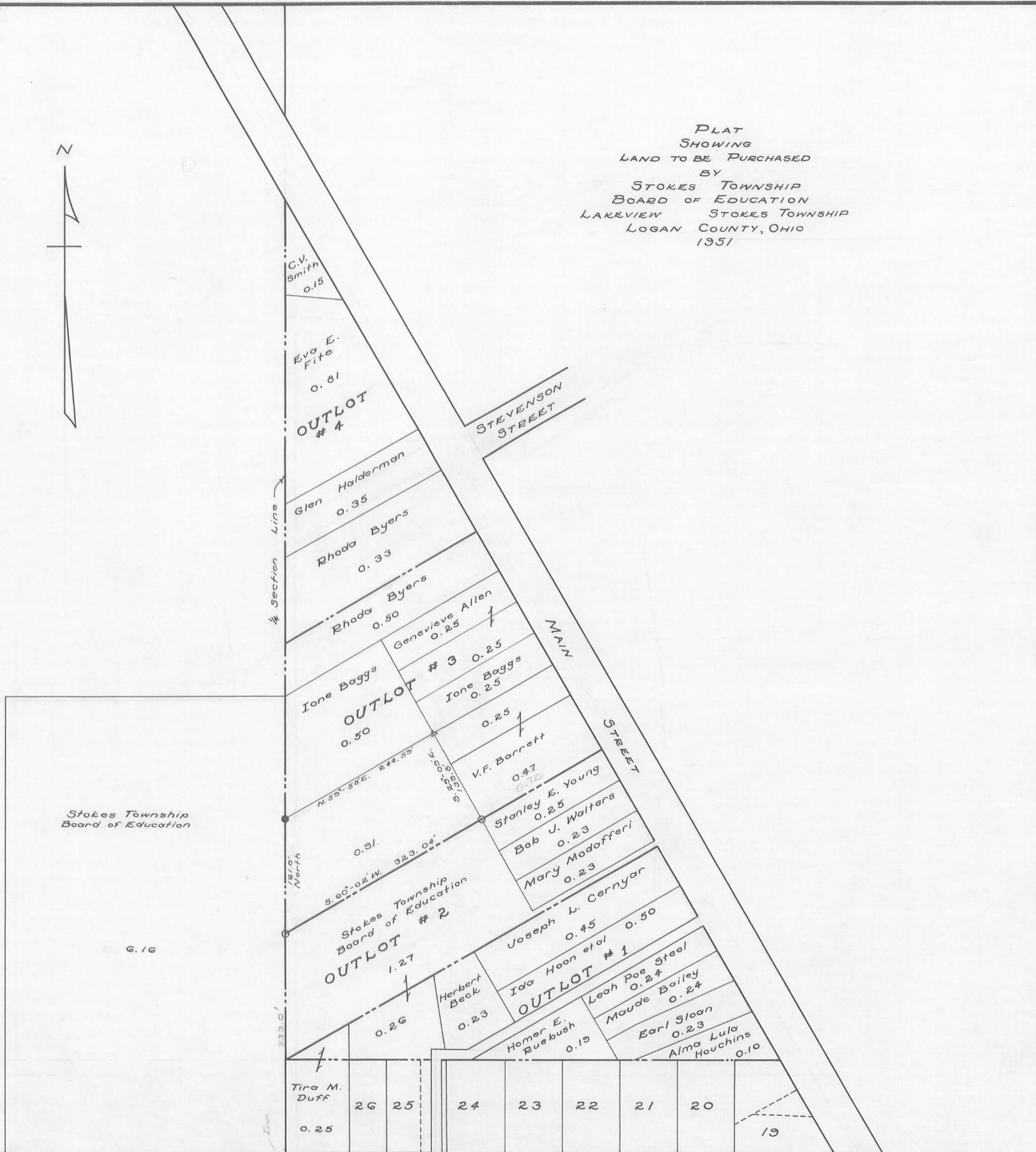


PLAT  
 SHOWING  
 LAND TO BE PURCHASED  
 BY  
 STOKES TOWNSHIP  
 BOARD OF EDUCATION  
 LAKEVIEW STOKES TOWNSHIP  
 LOGAN COUNTY, OHIO  
 1951



Surveyed by Carl E. Keyser 2-27-51  
 F.B. # 657 page # 68  
 Drawn by Dan L. Dodson

Scale 1" = 100'  
 Δ = Iron Pins  
 ● = Wooden Posts  
 ○ = Steel Posts