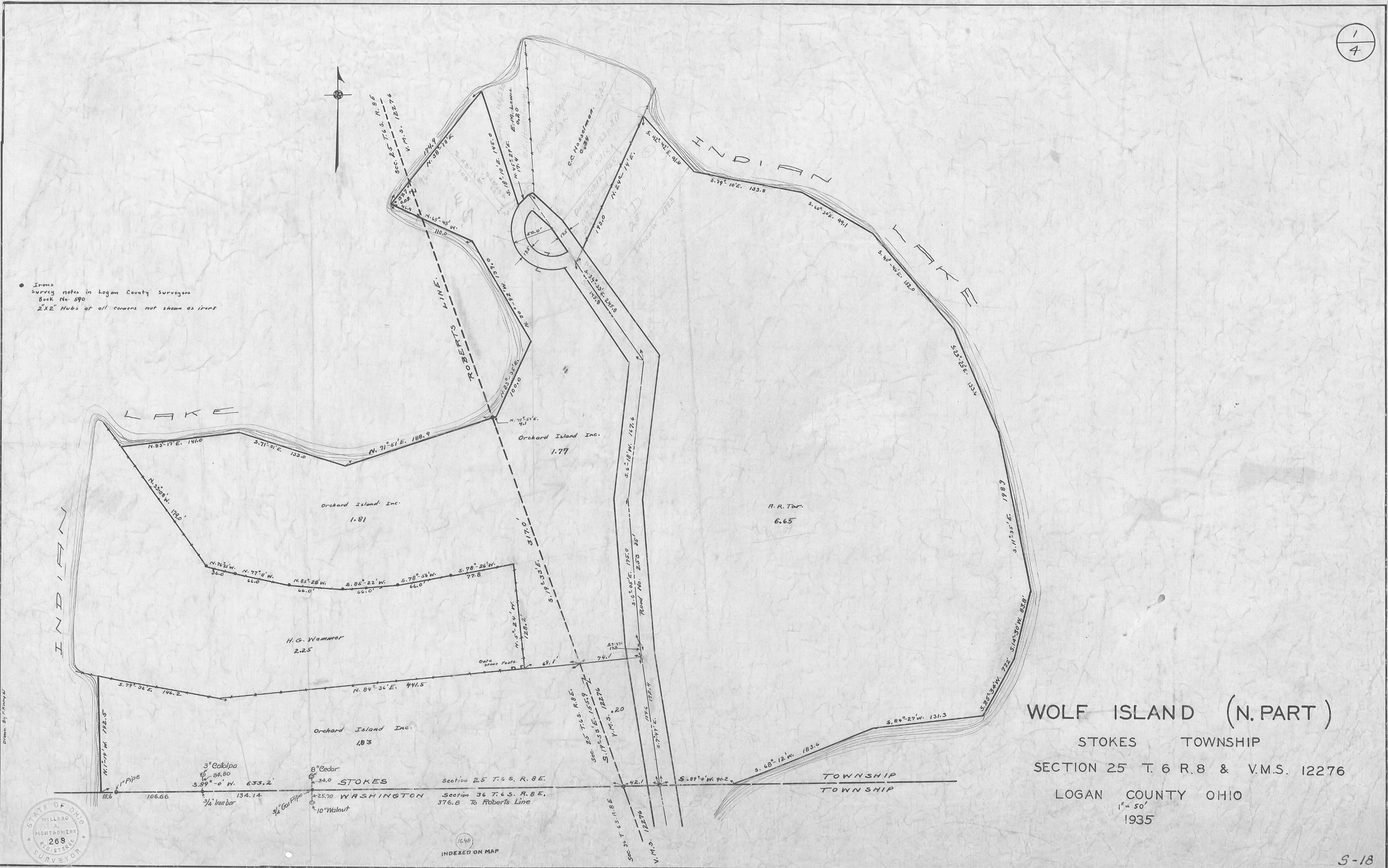


• Irons
Survey notes in Logan County Surveyors
Book No. 590
"XZ" Hubs at all corners not shown as irons



WOLF ISLAND (N. PART)

STOKES TOWNSHIP

SECTION 25 T. 6 S. R. 8 & V.M.S. 12276

LOGAN COUNTY OHIO

1" = 50'

1935



1648
INDEXED ON MAP