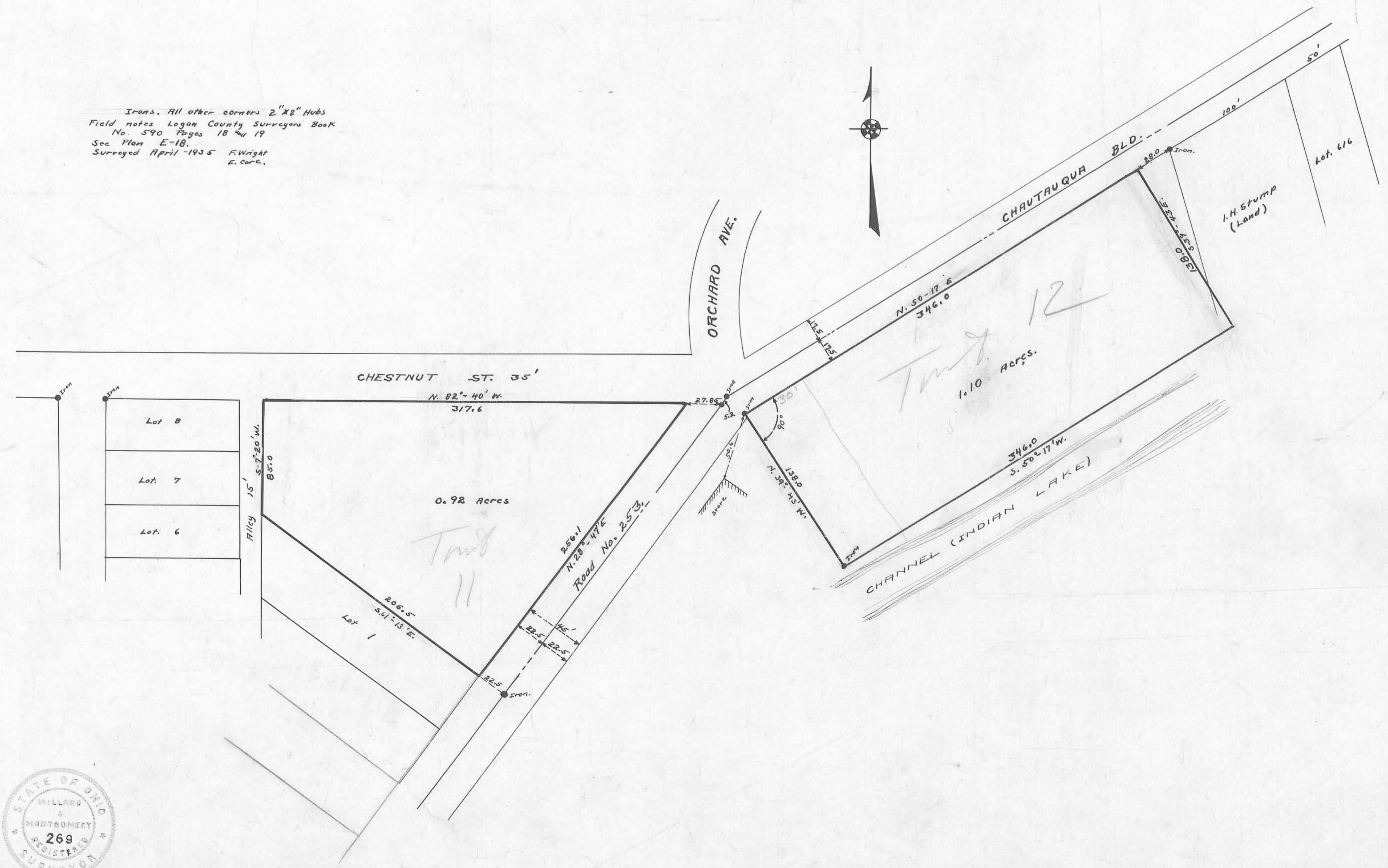


PARK NEAR LOT 52

Irons. All other corners 2" X 2" Hubs  
 Field notes Logan County Surveyors Book  
 No. 590 Pages 18 and 19  
 See Plan E-18.  
 Surveyed April 1935 F. Wright  
 E. Corc.



ORCHARD ISLAND (PART)  
 SECTION 36 TOWN 6 RANGE 8  
 WASHINGTON TOWNSHIP LOGAN COUNTY OHIO  
 ONE INCH TO FIFTY FEET  
 1935

INDEXED ON MAP

