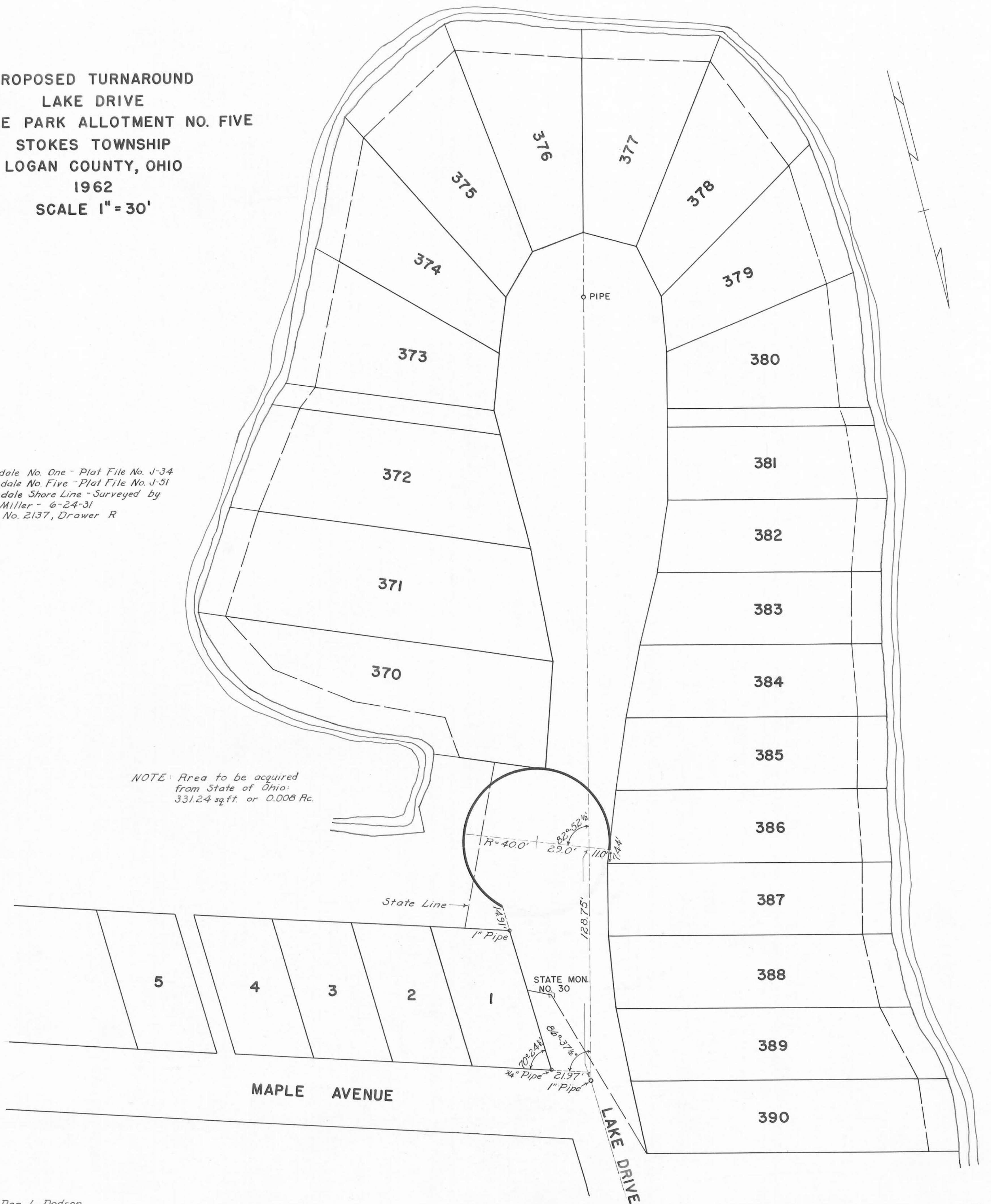


PROPOSED TURNAROUND
 LAKE DRIVE
 AVONDALE PARK ALLOTMENT NO. FIVE
 STOKES TOWNSHIP
 LOGAN COUNTY, OHIO
 1962
 SCALE 1" = 30'

References: Avondale No. One - Plat File No. J-34
 Avondale No. Five - Plat File No. J-51
 Avondale Shore Line - Surveyed by
 C.W. Miller - 6-24-31
 File No. 2137, Drawer R

NOTE: Area to be acquired
 from State of Ohio:
 331.24 sq. ft. or 0.008 Ac.



Surveyed by Dan L. Dodson
 September 13, 1962
 Field Notes: Logan County Engineer's
 Field Book 700, Page 9.

Drawn by Donald L. Tevis

4363

INDEXED ON MAP