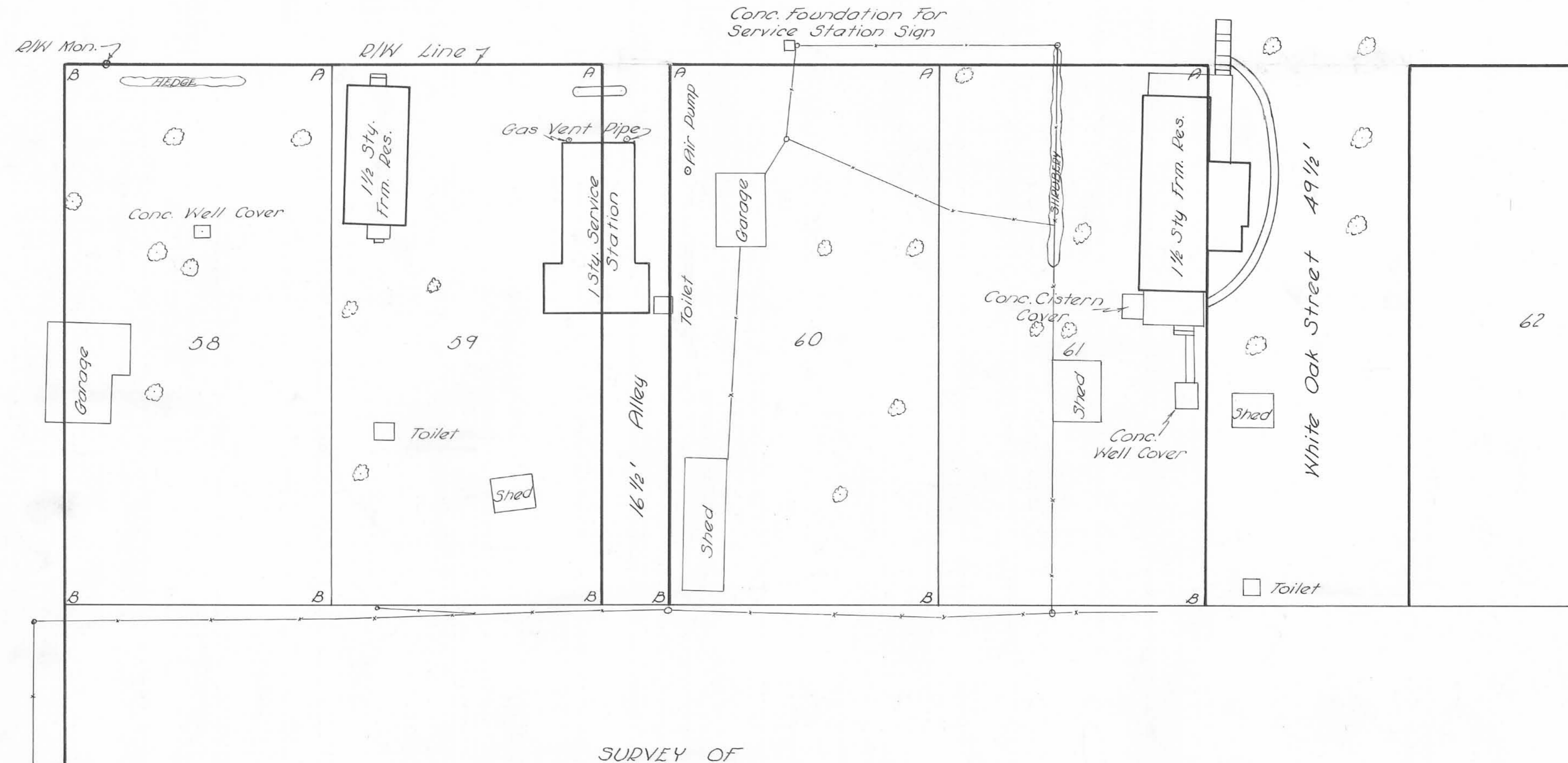


STATE ROUTE 47

CENTER STREET



SURVEY OF
 LOTS 58, 59, 60, 61
 LOGANSVILLE, OHIO
 FOR
 PLEASANT TWP. TRUSTEES
 JULY, 1965
 SCALE: 1" = 20'

REFERENCE:
 Plat Bk. B, Vol. 2, Pg. 30
 Surveyed By L.H. Geeslin
 Logan Co. Engineering Dept.
 F.B. 703, Pg. 72, 73

A = 1" # Bar Set
 B = 1" # Bar Set

3836

INDEXED ON MAP