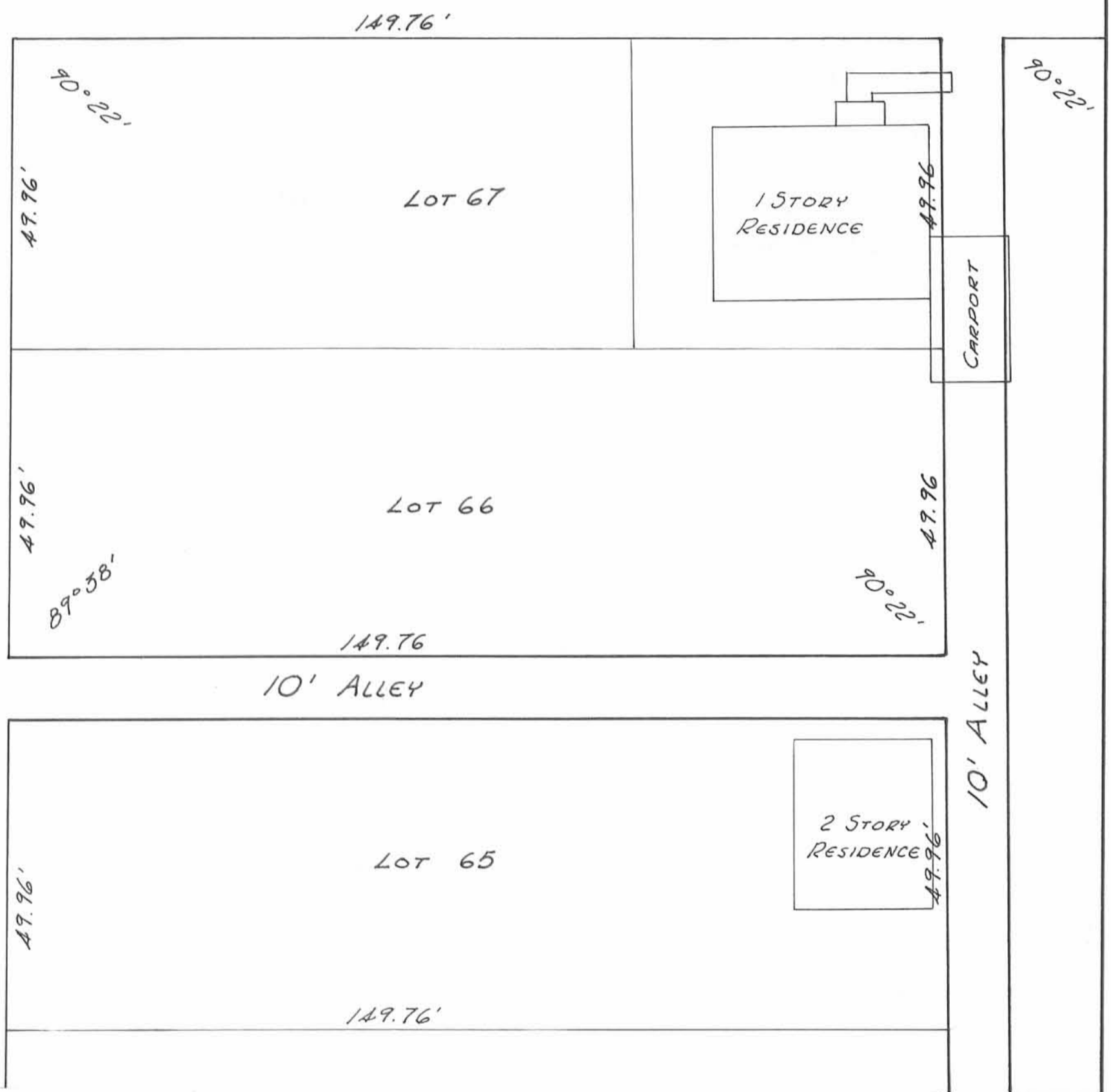


ELM STREET (50')

OAK STREET (50')



SURVEY OF 10' ALLEYS
 FOR
 VILLAGE OF LAKEVIEW
 JUNE 13, 1969
 CHESTER R. KURTZ
 LOGAN COUNTY ENGINEER

COUNTY
 (4543)
 INDEX NO.

LESLIE H. GEESLIN
 REG. SURVEYOR 5248