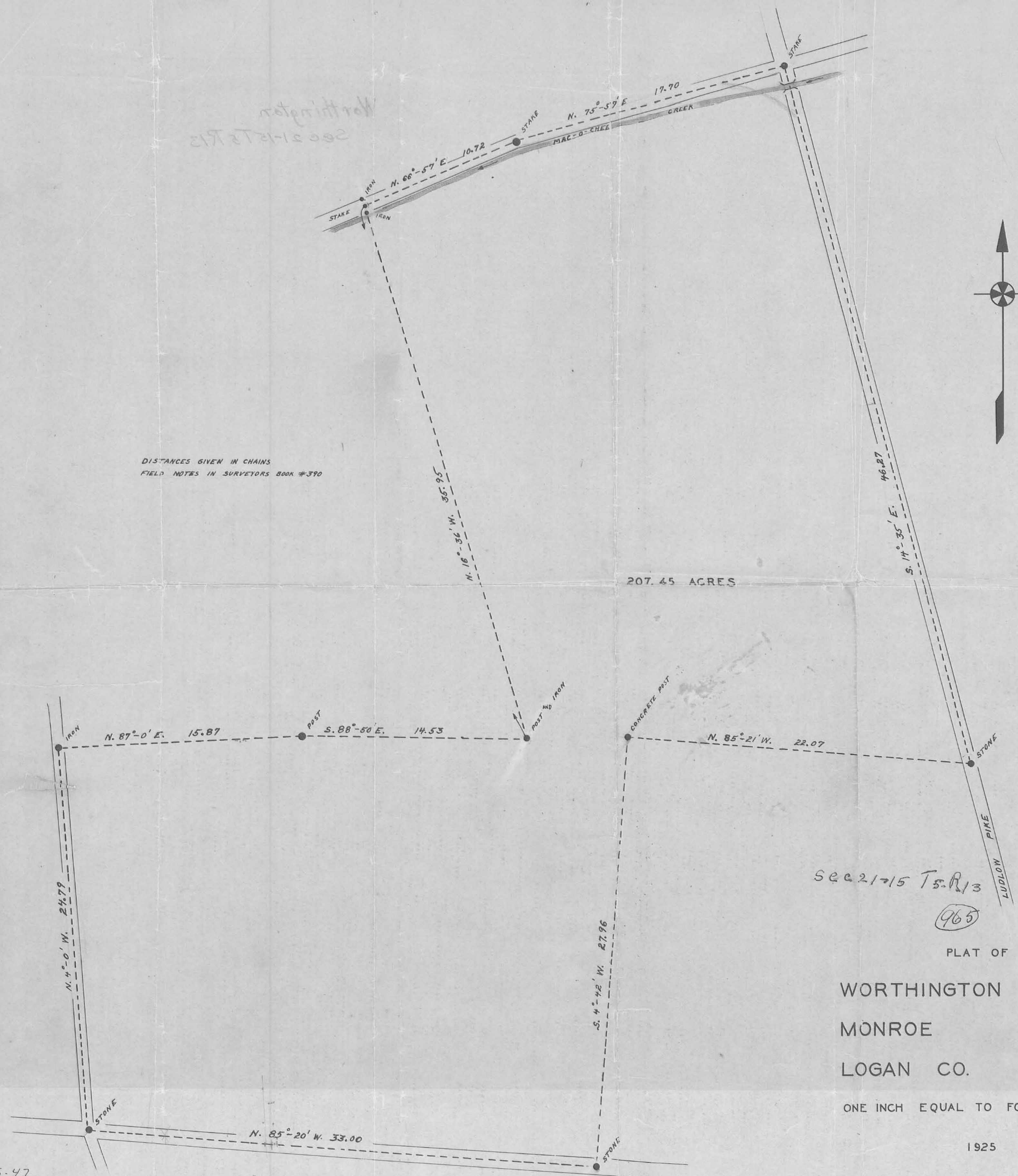


Northampton
Sec 21-15 T13

DISTANCES GIVEN IN CHAINS
FIELD NOTES IN SURVEYORS BOOK #390

207.45 ACRES



SEC 21-15 T13

(965)

PLAT OF
WORTHINGTON SURVEY
MONROE TOWNSHIP
LOGAN CO. OHIO

ONE INCH EQUAL TO FOUR CHAINS

1925