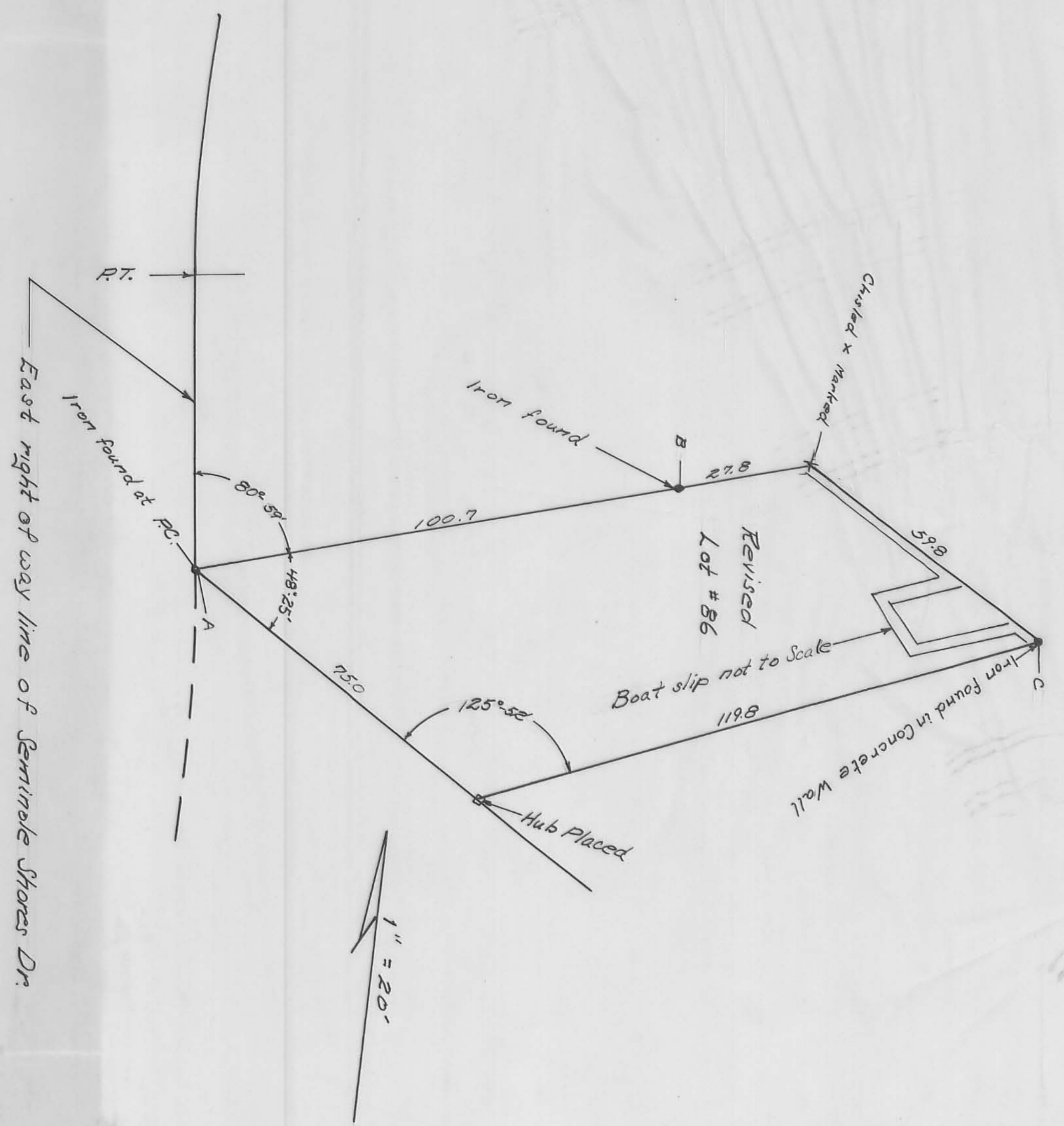


Below is a plat of lot 86 of Seminole Shores Sub-division #2 as it was to be shown on the Revised plat of lots 86 thru 90 as surveyed by me in Sept, 1951. I made the survey for H. Johnson. He and Mr. Leatherman were going to vacate lots 86 thru 91 and dedicate the the Revised Plat of lots 86 thru 90. This never came about. Points A, B & C were found in the ground as shown and accepted by Mr. Leatherman as the ground he was occupying. I was unable to verify who placed the irons, or if they were correct.

Owen K. Shirk



This is in: Stokes Top., Logan Co., Ohio.

OWEN K. SHIRK
 BELLEFONTAINE, OHIO
 SURVEYOR 4271