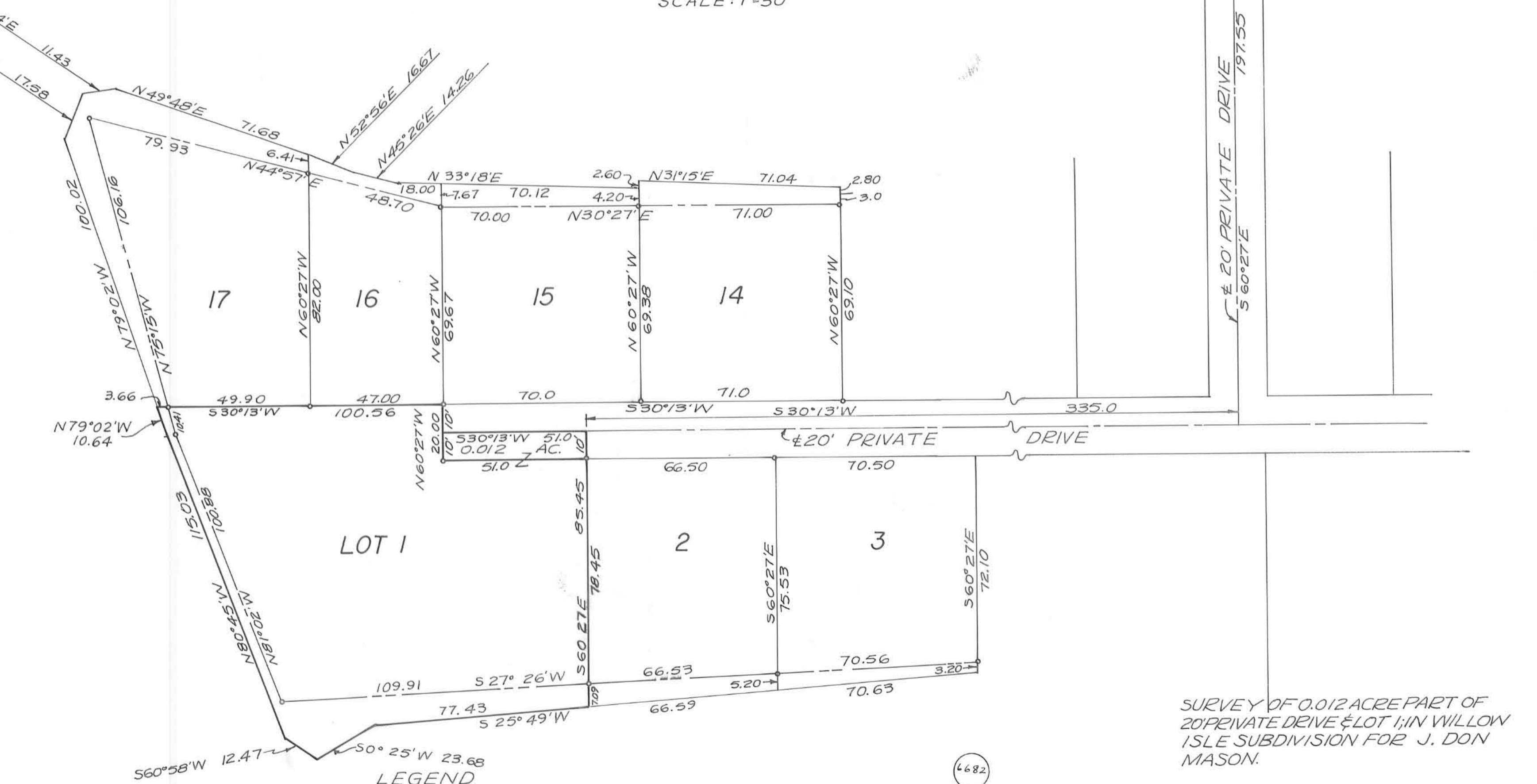
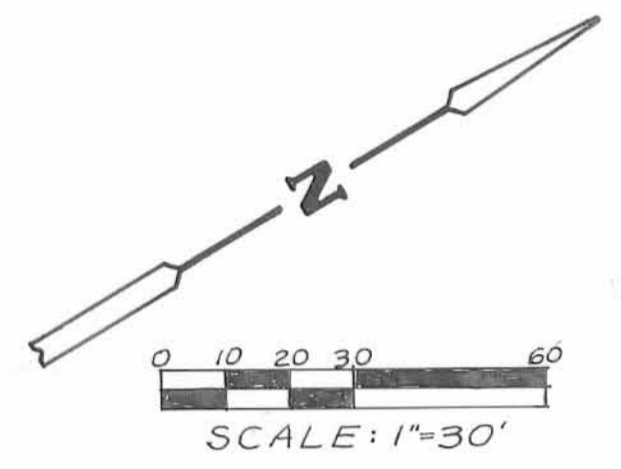


DATED: 20 OCT 1981



SURVEY OF 0.012 ACRE PART OF 20' PRIVATE DRIVE & LOT 1; IN WILLOW ISLE SUBDIVISION FOR J. DON MASON.

LEGEND  
• = IRON PIN (SEE RECORD PLAT)  
  
SURVEY REFERENCE  
WILLOW ISLE SUBDIVISION -  
RECORD PLAT BOOK 4; VOL. D; PG. 78

INDEXED ON MAP



*Richard W. Klockner*  
PROFESSIONAL SURVEYOR - #4370  
RICHARD W. KLOCKNER & ASSOC., INC.  
CIVIL ENGINEERING & SURVEYING  
16 E. WATER ST.  
TROY, OHIO 45373  
(513) 339-5331