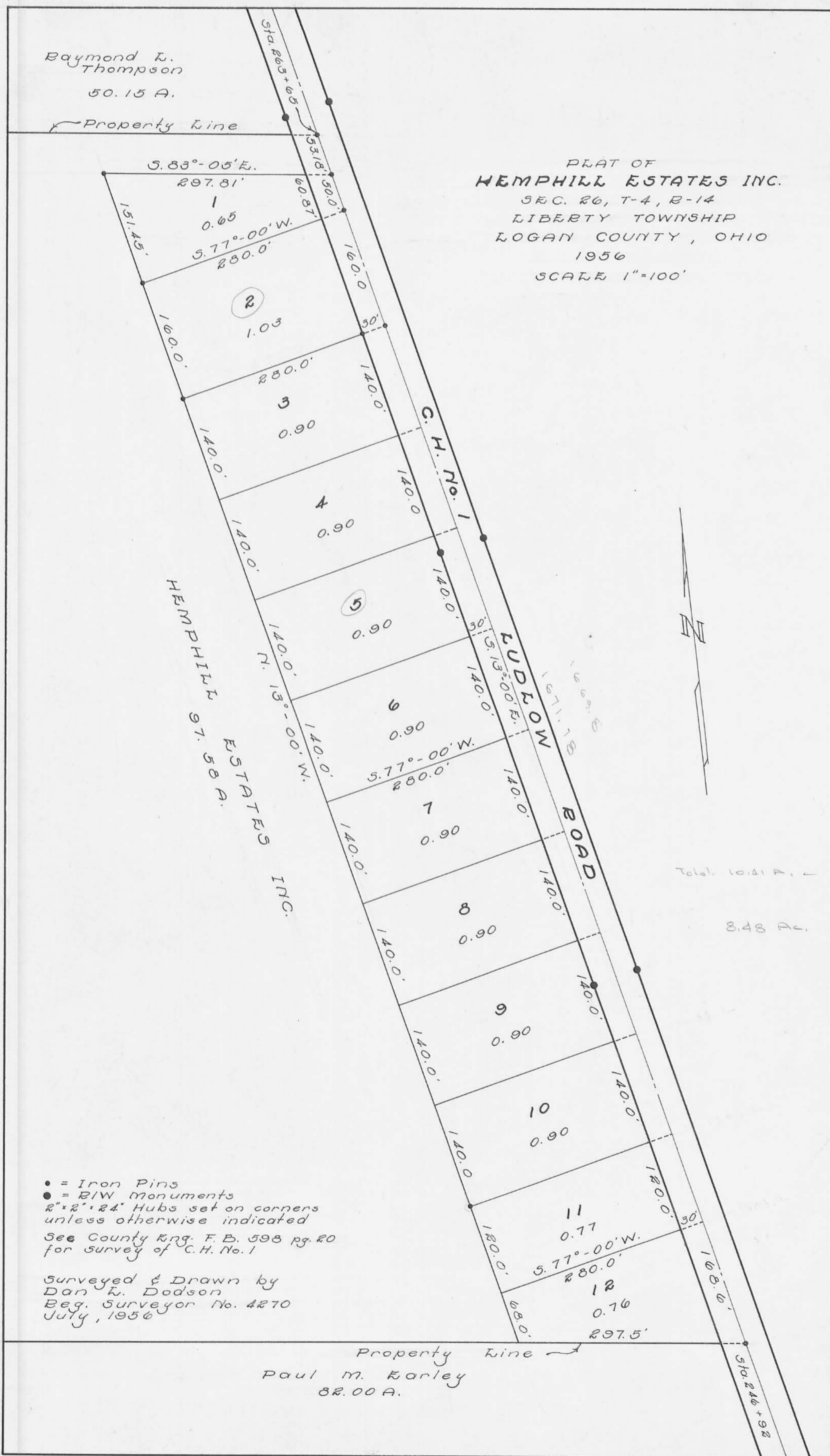


Raymond L. Thompson
50.15 A.

PLAT OF
HEMPHILL ESTATES INC.
SEC. 26, T-4, R-14
LIBERTY TOWNSHIP
LOGAN COUNTY, OHIO
1956
SCALE 1"=100'



HEMPHILL
ESTATES INC.
97.58 A.



Total 10.41 A.
8.48 P.

• = Iron Pins
● = B/W Monuments
2" x 2" x 24" Hubs set on corners
unless otherwise indicated
See County Eng. F. B. 598 pg. 20
for survey of C.H. No. 1

Surveyed & Drawn by
Dan K. Dodson
Reg. Surveyor No. 4270
July, 1956

Property Line
Paul M. Karley
82.00 A.