

T.R. 199



SEC. LINE

ALLEN DE VAULT

23.87 AC.

41.1 POLES (678.1')

S. 2° 05' W. 93 POLES (1534.5')

N. 89 3/4° W. 41.1 POLES (678.1')

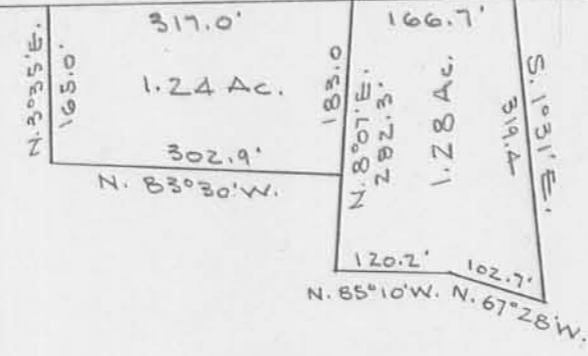
S. 2° 05' W. 68.2 POLES (1125.3')

S. 89° 05' E. 132.8 POLES (2191.2')
1/4 SEC. LINE

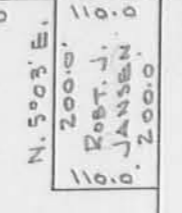
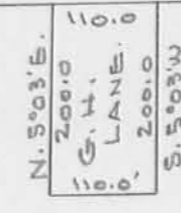
PLAT OF
FRANK LANE FARM
SEC. 31 T-4 R-14
LIBERTY TOWNSHIP
LOGAN COUNTY, OHIO
SCALE 1" = 200'

ACREAGE
DEED VOL. 252 PG. 265
131.95 AC.
DEDUCT 3.52 AC.
BAL. = 128.43 AC.

SEC. LINE
543' N. 89 3/4° W. 122.7 POLES (2024.6')



557.8' N. 86° 47' W.



N. 2° 05' E. 108 POLES (1782.0')

54.75 POLES (903.4')
N. 2° 05' E.

(495.0')
30 POLES
S. 89 3/4° E.

DRAWN BY
DAN L. DODSON
REG. SURVEYOR 4270
FEB. 24, 1972