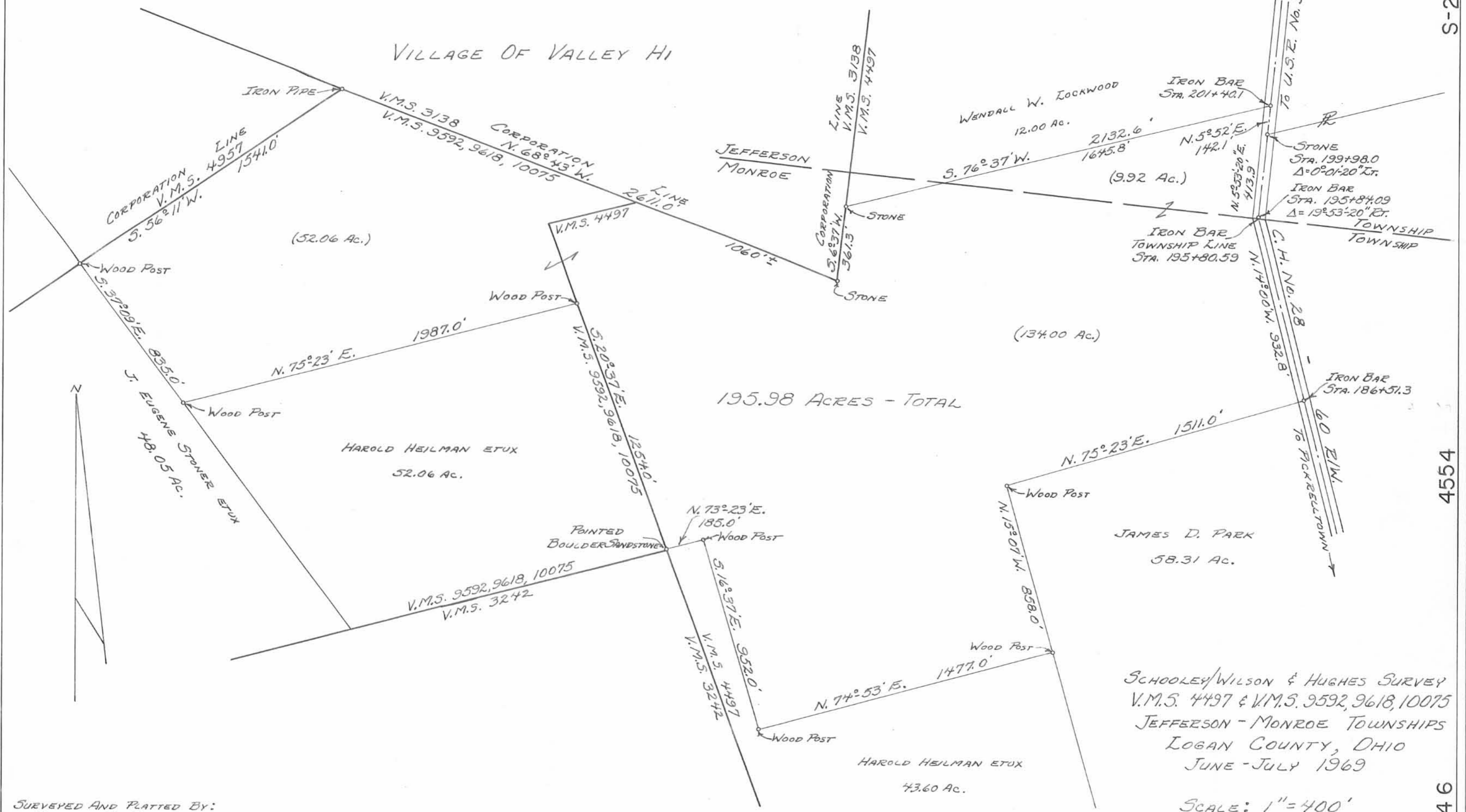


VILLAGE OF VALLEY HI



SURVEYED AND PLATTED BY:  
DANIEL E. GILBERT, P.S.  
REG. SUR. No. 5402  
428 N. MADRIVER ST.  
BELLEFONTAINE, OHIO 43311

SCHOOLEY/WILSON & HUGHES SURVEY  
V.M.S. 4497 & V.M.S. 9592, 9618, 10075  
JEFFERSON - MONROE TOWNSHIPS  
LOGAN COUNTY, OHIO  
JUNE - JULY 1969

SCALE: 1" = 400'