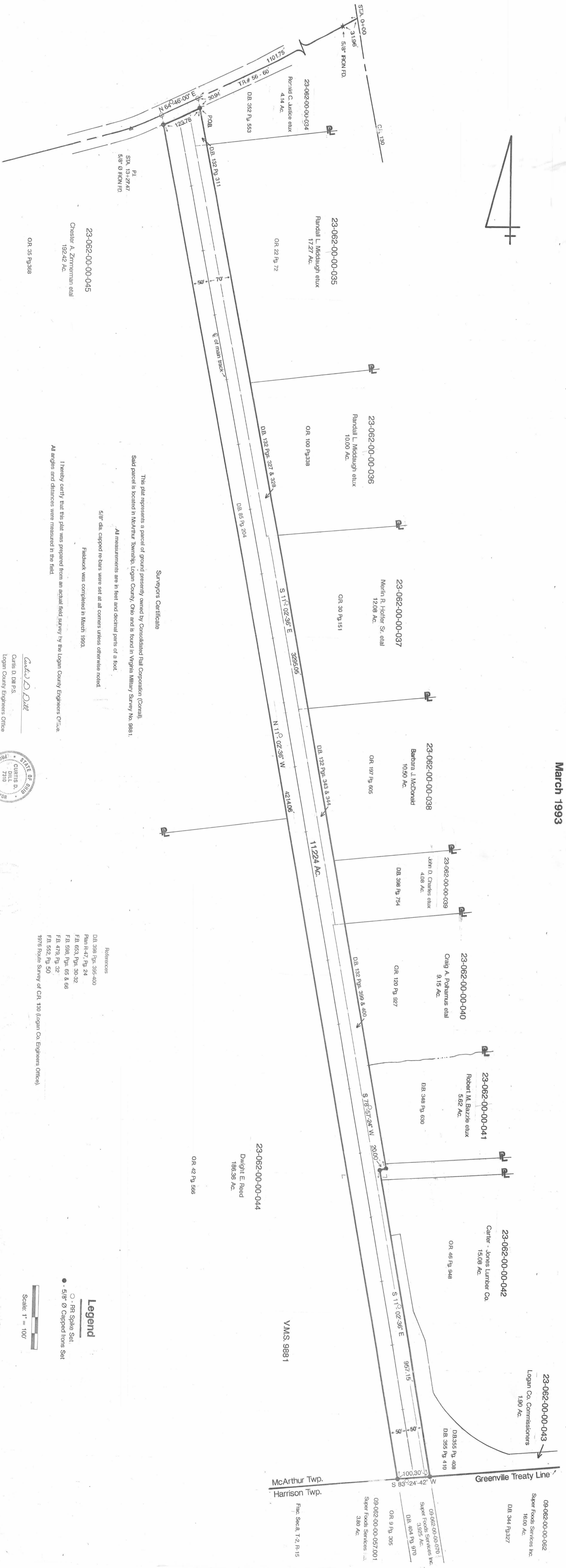
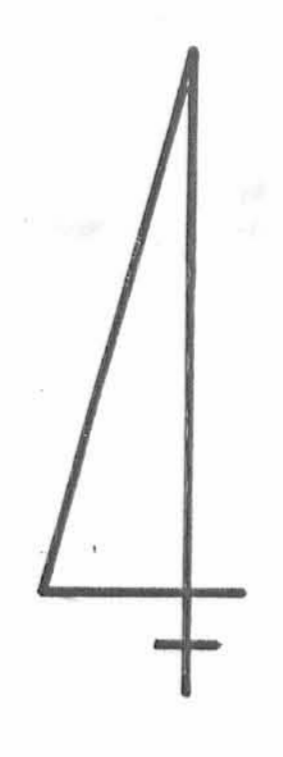


SURVEY OF CONRAIL PROPERTY

McArthur Township Logan County, Ohio

V.M.S. 9881

March 1993



Surveyor's Certificate

This plat represents a parcel of ground presently owned by Consolidated Rail Corporation (Conrail). Said parcel is located in McArthur Township, Logan County, Ohio and is found in Virginia Military Survey No. 9881.

All measurements are in feet and decimal parts of a foot.

5/8" dia. capped re-bars were set at all corners unless otherwise noted.

Fieldwork was completed in March 1993.

I hereby certify that this plat was prepared from an actual field survey by the Logan County Engineers Office.

All angles and distances were measured in the field.

23-062-00-00-045
Chester A. Zimmerman et al
192.42 Ac.

OR 35 Pg 368

- References**
- DB 398 Pgs. 395-400
 - Plan R-47, Pg. 24
 - FB 653, Pgs. 30-32
 - FB 598, Pgs. 65 & 66
 - FB 479, Pg. 32
 - FB 552, Pg. 50

1876 Route Survey of CR 130 (Logan Co. Engineers Office)



- Legend**
- - RR Spike Set
 - - 5/8" Ø Capped Irons Set

Curtis D. Dill
Curtis D. Dill P.S.
Logan County Engineers Office
Registered Survey No. 7310
Bellevue, Ohio



Basis of bearing being the center line of McArthur Township Road No. 56 (N64° - 46' - 00" E) as shown in Field Book No. 653, page 30.

Caps placed on irons set are stamped "Logan County Engineer"

McArthur Twp.
Harrison Twp.
Frac. Sec. 8, T.2, R.15

23-062-00-00-043
Logan Co. Commissioners
1.90 Ac.

09-062-00-00-062
Super Foods Services Inc.
16.00 Ac.

DB 344 Pg 327

OR 9 Pg 305
09-062-00-00-057,001
Super Foods Services Inc.
3.90 Ac.