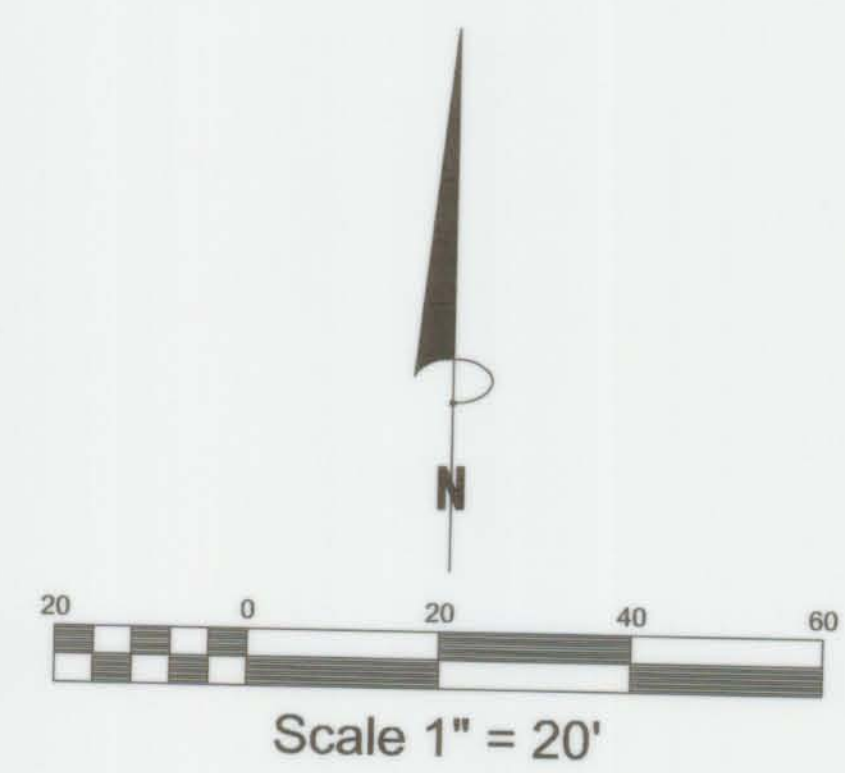
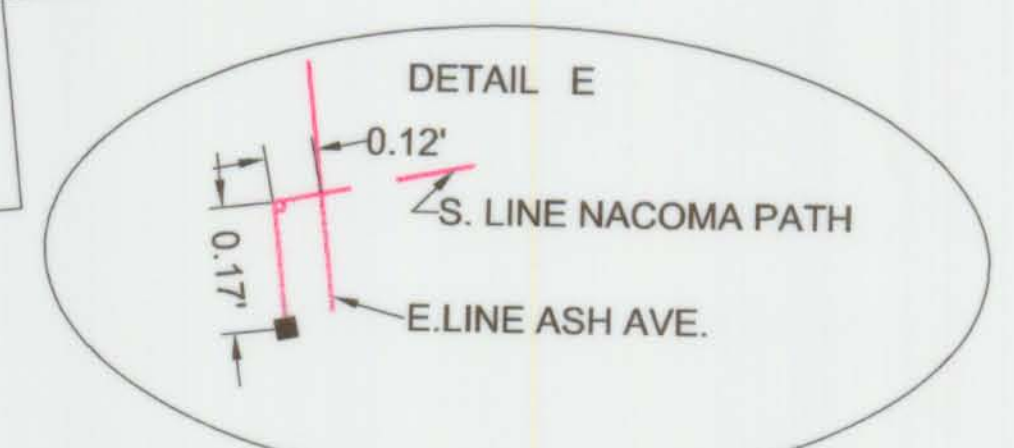
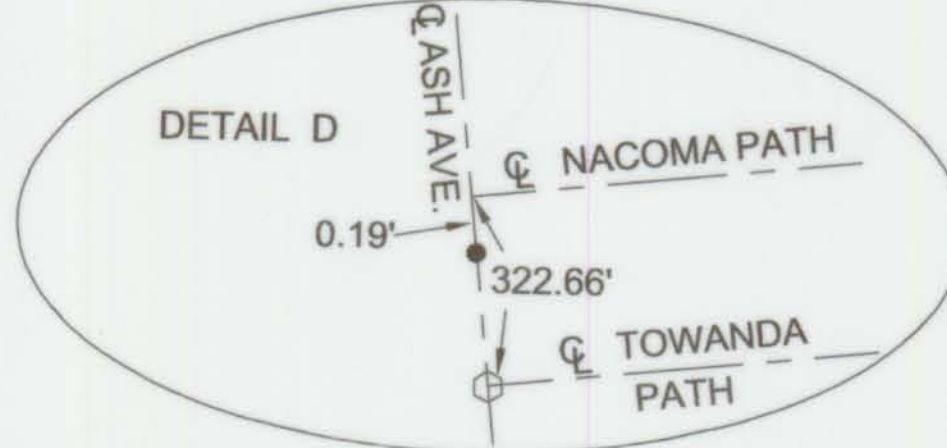
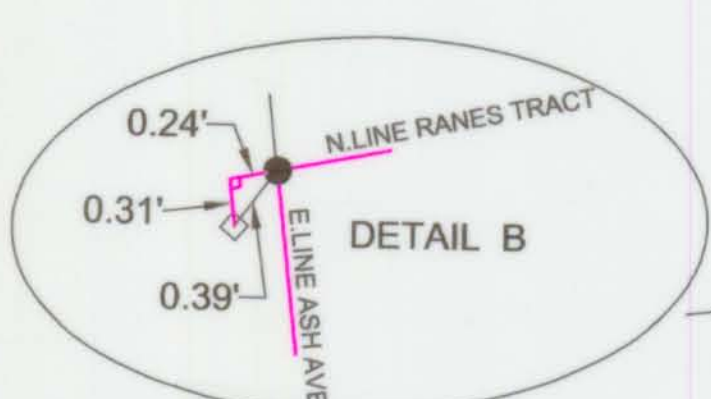
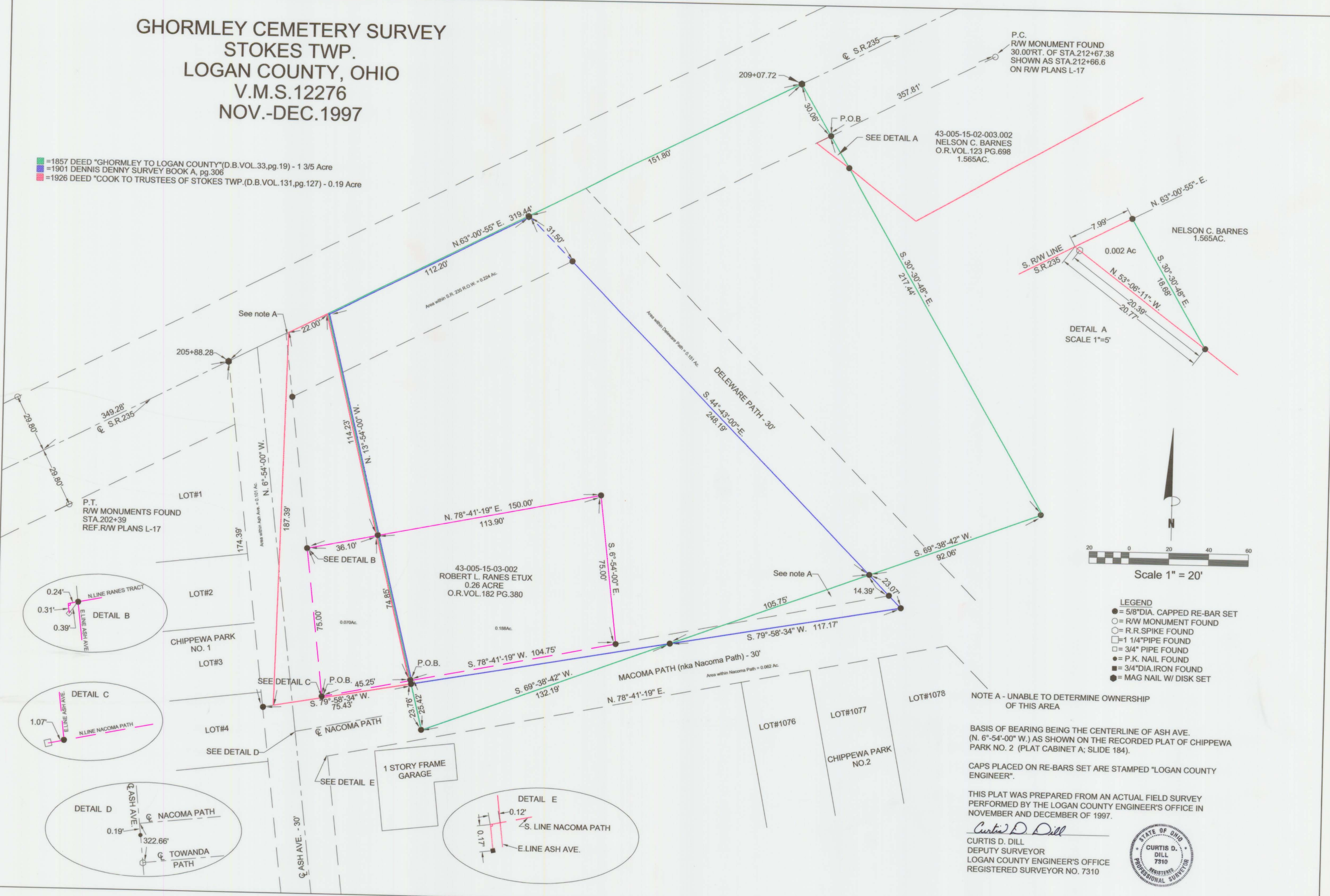


GHORMLEY CEMETERY SURVEY
STOKES TWP.
LOGAN COUNTY, OHIO
V.M.S.12276
NOV.-DEC.1997

- = 1857 DEED "GHORMLEY TO LOGAN COUNTY" (D.B.VOL.33,pg.19) - 1 3/5 Acre
- = 1901 DENNIS DENNY SURVEY BOOK A, pg.306
- = 1926 DEED "COOK TO TRUSTEES OF STOKES TWP." (D.B.VOL.131,pg.127) - 0.19 Acre



- LEGEND**
- = 5/8" DIA. CAPPED RE-BAR SET
 - = R/W MONUMENT FOUND
 - = R.R. SPIKE FOUND
 - = 1 1/4" PIPE FOUND
 - = 3/4" PIPE FOUND
 - = P.K. NAIL FOUND
 - = 3/4" DIA. IRON FOUND
 - = MAG NAIL W/ DISK SET

NOTE A - UNABLE TO DETERMINE OWNERSHIP OF THIS AREA

BASIS OF BEARING BEING THE CENTERLINE OF ASH AVE. (N. 6°-54'-00" W.) AS SHOWN ON THE RECORDED PLAT OF CHIPPEWA PARK NO. 2 (PLAT CABINET A; SLIDE 184).

CAPS PLACED ON RE-BARS SET ARE STAMPED "LOGAN COUNTY ENGINEER".

THIS PLAT WAS PREPARED FROM AN ACTUAL FIELD SURVEY PERFORMED BY THE LOGAN COUNTY ENGINEER'S OFFICE IN NOVEMBER AND DECEMBER OF 1997.

Curtis D. Dill
 CURTIS D. DILL
 DEPUTY SURVEYOR
 LOGAN COUNTY ENGINEER'S OFFICE
 REGISTERED SURVEYOR NO. 7310

