

ANNEXATION DESCRIPTION
TERRITORY TO BE ANNEXED TO THE CITY OF BELLEFONTAINE
VIRGINIA MILITARY SURVEY 10086-10198
LAKE TOWNSHIP
LOGAN COUNTY, OHIO

LYING IN VIRGINIA MILITARY SURVEY 10086-10198, LAKE TOWNSHIP, LOGAN COUNTY, OHIO.

BEING A DESCRIPTION, FOR ANNEXATION PURPOSES ONLY, OF PART OF THE FIRST REGULAR BAPTIST CHURCH 3.00 ACRE TRACT AS DEEDED AND DESCRIBED IN VOLUME 316, PAGE 330 AND PART OF THE FIRST REGULAR BAPTIST CHURCH OF BELLEFONTAINE, OHIO 6.000 ACRE TRACT AS DEEDED AND DESCRIBED IN VOLUME 342, PAGE 976 OF THE LOGAN COUNTY RECORDS OF DEEDS AND BEING MORE PARTICULARLY DESCRIBED AS FOLLOWS:

COMMENCING AT A POINT AT THE INTERSECTION OF THE CENTER-LINES OF COUNTY HIGHWAY 1 (LUDLOW ROAD) (60 FEET WIDE) AND TOWNSHIP ROAD 185 (32 FEET WIDE)

THENCE, WITH THE CENTER-LINE OF COUNTY HIGHWAY 1 AND THE EXISTING CORPORATION LINE OF BELLEFONTAINE, N 19°-30'-00"W, A DISTANCE OF 17.01 FEET TO A POINT AT THE TRUE POINT OF BEGINNING.

THENCE, WITH THE CENTER-LINE OF COUNTY HIGHWAY 1 AND THE EXISTING CORPORATION LINE OF BELLEFONTAINE, N 19°-30'-00"W, A DISTANCE OF 196.58 FEET TO A POINT.

THENCE, WITH THE SOUTH LINE OF THE BRADFORD C. WILKINS AND SHERIDAN A. WILKINS 13.384 ACRE TRACT (O.R. 813, PG. 435) THE FOLLOWING SIX COURSES:

N 70°-20'-00"E, A DISTANCE OF 177.70 FEET TO A POINT.

N 18°-24'-00"W, A DISTANCE OF 34.10 FEET TO A POINT.

N 71°-36'-00"E, A DISTANCE OF 83.20 FEET TO A POINT.

N 15°-04'-00"W, A DISTANCE OF 87.80 FEET TO A POINT.

N 76°-49'-00"E, A DISTANCE OF 590.30 FEET TO A POINT.

S 89°-48'-00"E, A DISTANCE OF 400.00 FEET TO A POINT.

THENCE, WITH THE WEST LINE OF THE CHRISTINA B. TILLMAN 3.186 ACRE TRACT (O.R. 888, PG. 497, TRACT II), S 0°-35'-00"W, AS DISTANCE OF 193.40 FEET TO A POINT.

THENCE, WITH THE NORTH LINE OF THE JAMES A. POST AND MARY P. POST 1.60 ACRE TRACT (O.R. 25, PG. 721), AND THE NORTH LINE OF THE RICK E. BOWSER AND SANDRA J. BOWSER 0.37 ACRE TRACT (O.R. 421, PG. 195, PARCEL 2), N 89°-48'-00"W, A DISTANCE OF 400.00 FEET TO A POINT.

THENCE, WITH THE EAST LINES OF THE RICK E. BOWSER AND SANDRA J. BOWSER 0.37 ACRE TRACT, 0.23 ACRE TRACT AND 1.00 ACRE TRACT (O.R. 421, PG. 195, PARCEL 2, PARCEL 3 AND PARCEL 1), S 0°-35'-00"W, A DISTANCE OF 332.27 FEET TO A POINT ON THE NORTH RIGHT-OF-WAY OF TOWNSHIP ROAD 185.

THENCE, WITH THE NORTH RIGHT-OF-WAY OF TOWNSHIP ROAD 185, S 89°-48'-00"W, A DISTANCE OF 716.47 FEET TO THE POINT OF BEGINNING.

CONTAINING 8.746 ACRES, OF WHICH 0.139 ACRES ARE WITHIN THE HIGHWAY RIGHT-OF-WAY.

THE BASIS FOR BEARINGS IS THE CENTER-LINE OF COUNTY HIGHWAY 1, BEING N 19°-30'-00"W, AND ALL OTHER BEARINGS ARE FROM RECORDS. THIS DESCRIPTION IS FOR ANNEXATION PURPOSES ONLY AND IS NOT A BOUNDARY SURVEY AS DEFINED IN OHIO ADMINISTRATIVE CODE 4733-37.

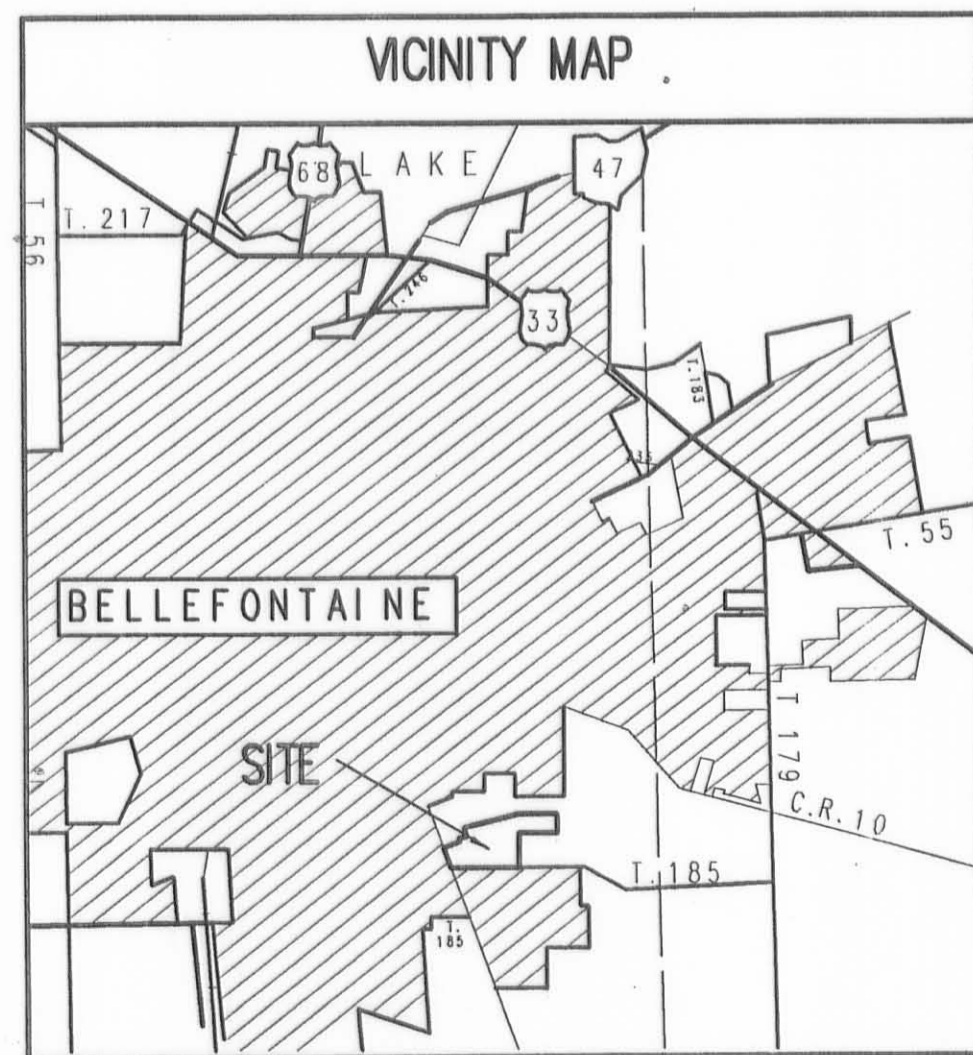
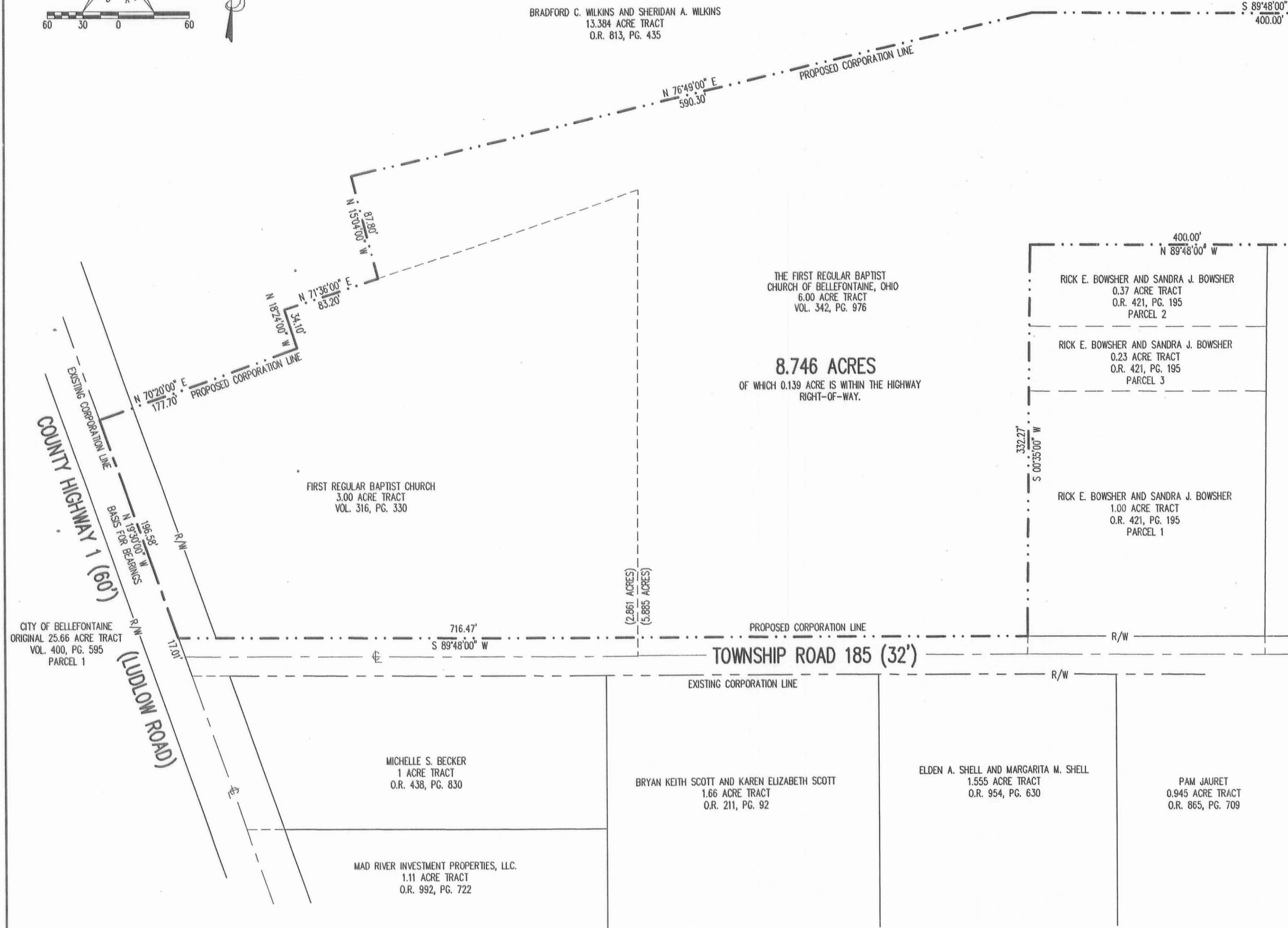
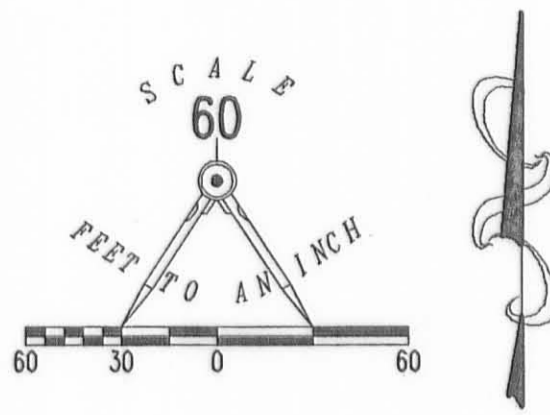
THIS DESCRIPTION WAS PREPARED BY WILLIAM K. BRUCE, PROFESSIONAL SURVEYOR 7437, ON NOVEMBER 16, 2007.

CITY OF BELLEFONTAINE
ANNEXATION MAP OF
8.746 ACRES OF WHICH:

2.861 ACRES ARE OUT OF THE
 FIRST REGULAR BAPTIST CHURCH
 3.00 ACRE TRACT
 VOLUME 316, PAGE 330

AND
 5.885 ACRES ARE OUT OF THE
 THE FIRST REGULAR BAPTIST CHURCH
 OF BELLEFONTAINE, OHIO
 6.000 ACRE TRACT
 VOLUME 342, PAGE 976

VIRGINIA MILITARY SURVEY 10086-10198
LAKE TOWNSHIP
LOGAN COUNTY, OHIO



LOGAN COUNTY COMMISSIONERS	John Bayliss	3-6-2012
	DATE	
	D. A. Hill	3-6-12
	DATE	
	Anthony E. Coe	3/6/12
	DATE	
LOGAN COUNTY ENGINEER	Scott Allen	3-6-12
	DATE	
CHAIRMAN, TOWNSHIP TRUSTEES	Bryant Dault	2-28-12
	DATE	
L.U.C. PLANNING DIRECTOR	James ReMann	3/8/2012
	DATE	
MAYOR OF BELLEFONTAINE	Adam M. Bauman	2-28-12
	DATE	
PRESIDENT, CITY COUNCIL	David Henry	2-28-12
	DATE	
CLERK, CITY COUNCIL	Bonnie Patterson	2-28-12
	DATE	
PLAT PRE-APPROVED	Suzanne M. Yeats	2-16-12
	DATE	
PLAT CHECKED	Suzanne M. Yeats	3-9-12
	DATE	
CITY ORDINANCE NUMBER	12-13	

TRANSFERRED THIS 29th DAY OF November, 2012

AUDITOR, LOGAN COUNTY, OHIO Michael E. Godwin

RECEIVED FOR RECORD AT 3:29:41 O'CLOCK P M.

THIS 29th DAY OF November, 2012

RECORDER, LOGAN COUNTY, OHIO Linda Hanson

RECORDED IN PLAT CABINET B SLIDE 130B
 SURVEYED BY:

STATE OF OHIO
 Logan County RECORDER
 PLAT 201207052 PLAT B/130B 1P
 11/29/2012 03:29:41 PM
 RECORDING FEES: \$86.40
 CITY OF BELLEFONTAINE

WILLIAM K. BRUCE
 PROFESSIONAL SURVEYOR 7437
 NOVEMBER 16, 2007
 REVISED FEBRUARY 15, 2012
 COPYRIGHT 2007 BY:
 LEE SURVEYING & MAPPING CO., INC.
 117 North Madriver Street
 BELLEFONTAINE, OHIO 43311
 (937) 593-7335
 surveys@lsmc.us

2 WORKING DAYS
BEFORE YOU DIG
 CALL TOLL FREE 800-362-2764
 OHIO UTILITY PROTECTION SERVICE