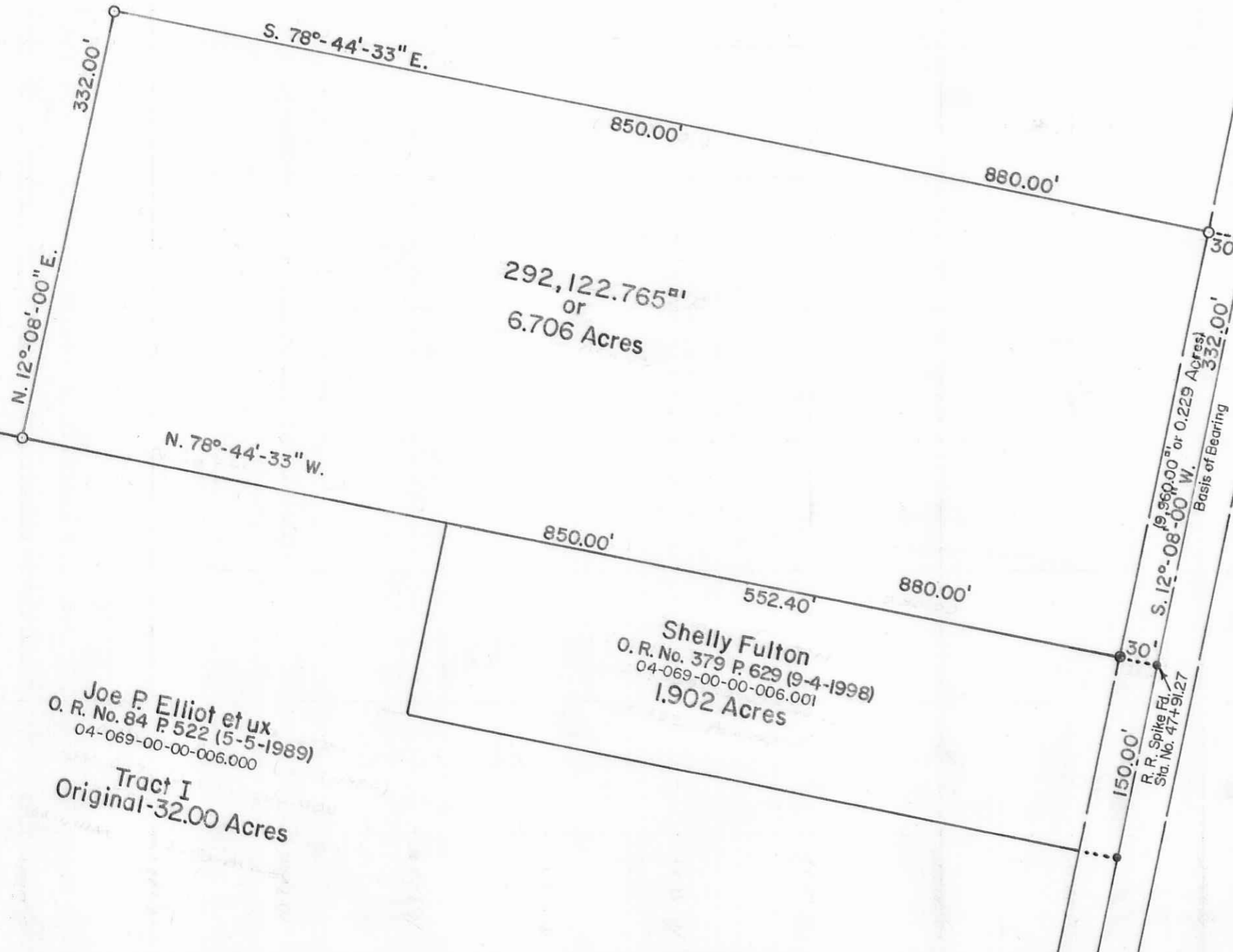


Ronald L. Mouser et ux
 O. R. No. 541 P. 134 (12-13-2001)
 04-069-00-00-005.000
 Original-81.00 Acres

292,122.765^{sq ft}
 or
 6.706 Acres

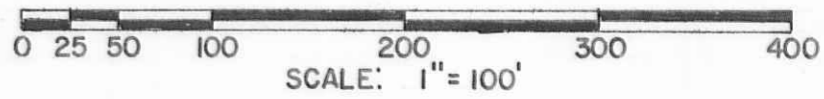
Shelly Fulton
 O. R. No. 379 P. 629 (9-4-1998)
 04-069-00-00-006.001
 1.902 Acres

Joe P. Elliot et ux
 O. R. No. 84 P. 522 (5-5-1989)
 04-069-00-00-006.000
 Tract I
 Original-32.00 Acres

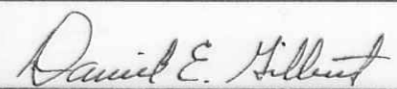


C. H. No. 142 - 60'
 F. B. No. 497 P. 63

Basis of Bearing
 S. 12°-08'-00" W. 332.00'
 R. R. Spikes Fd. Sta. No. 47+91.27
 150.00'



- SYMBOLS:
- - R. R. Spikes Fd.
 - - R. R. Spike Set.
 - - 5/8" Rebar Fd.
 - - 5/8" x 30" Rebars Set.

Ronald L. Mouser Survey V. M. S. No. 6154, Bokescreek Township, Logan County, Ohio.	
SCALE: 1" = 100'	APPROVED BY:
DATE: 9-13-2003	DRAWN BY: DEG
REVISOR:	
 Daniel E. Gilbert, P.S. Reg. Sur. No. 5402	
DRAWING NUMBER: 2003-019	

INDEXED ON MAP 9454 5-393