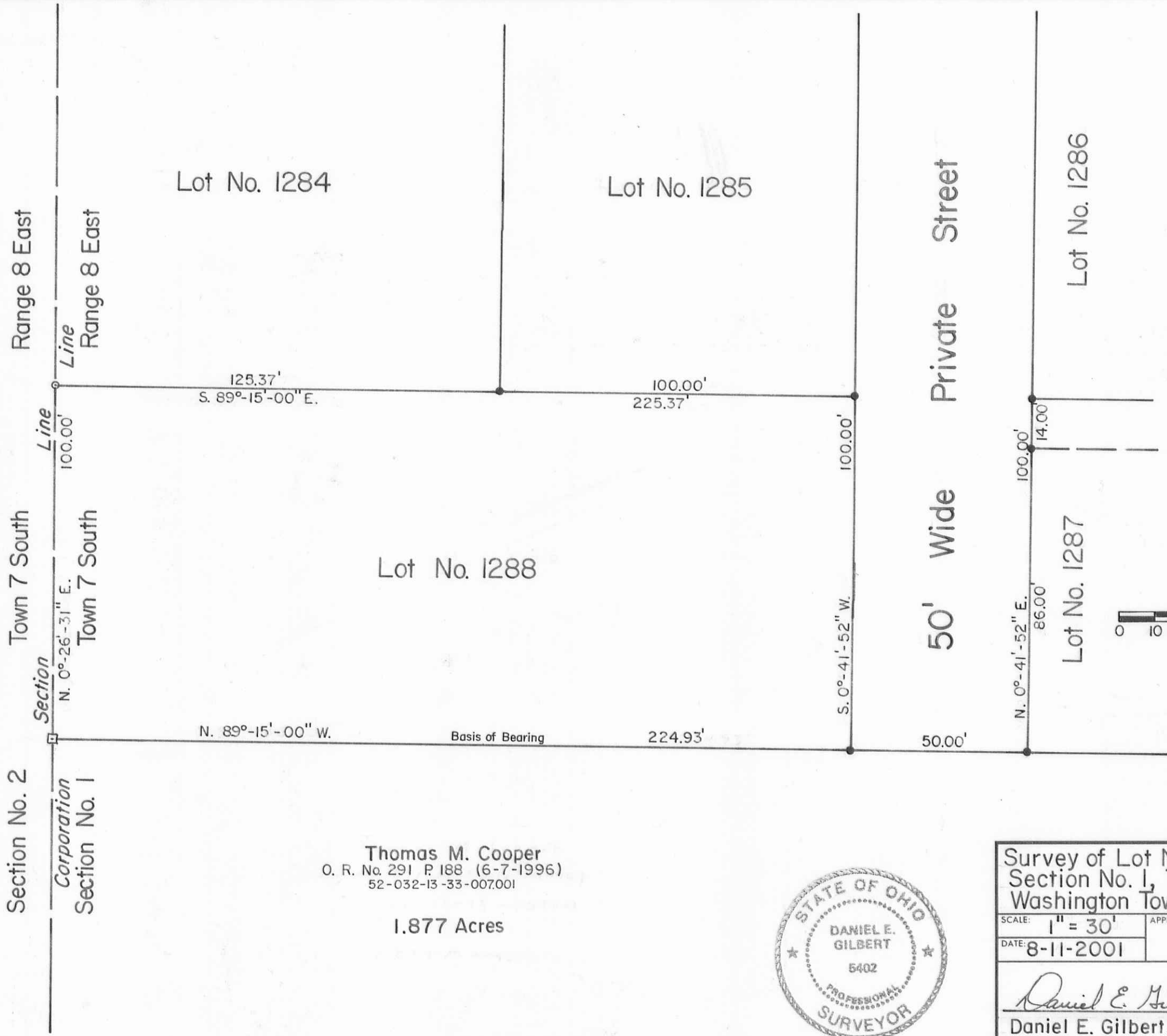


James E. Duff  
 D. Vol. No. 333 P. 281 (10-6-1970)  
 51-031-00-00-056.001  
 Original 20.00 Acres  
 37.40 Acres



Range 8 East

Range 8 East

Town 7 South

Town 7 South

Section No. 2

Section

Section No. 1

Line

Line

Corporation

Lot No. 1284

Lot No. 1285

Lot No. 1288

Lot No. 1286

Lot No. 1287

50' Wide Private Street

125.37'  
 S. 89°-15'-00" E.

100.00'  
 225.37'

100.00'

N. 0°-26'-31" E.

N. 89°-15'-00" W.

Basis of Bearing

224.93'

100.00'

S. 0°-41'-52" W.

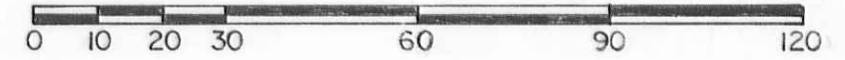
50.00'

100.00'

N. 0°-41'-52" E.

86.00'

14.00'



Scale: 1" = 30'

SYMBOLS:

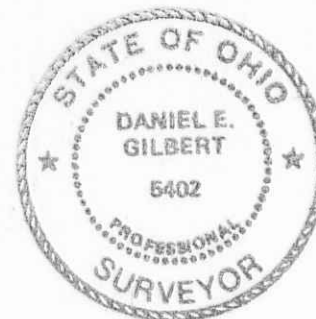
- - 5/8" Rebars Fd.
- - 5/8" x 30" Rebar Set. (Capped).
- ▣ - 5/8" Square Iron Bar Fd.

REFERENCE:

NICHELSON'S SOUTH.  
 Plat Cab. A Slide 719-A  
 (6-14-1990).

Thomas M. Cooper  
 O. R. No. 291 P. 188 (6-7-1996)  
 52-032-13-33-007.001

1.877 Acres



Survey of Lot No. 1288 - Nicholson's South,  
 Section No. 1, T.7S., R.8E., Village of Russell's Point,  
 Washington Township, Logan County, Ohio.

SCALE: 1" = 30'	APPROVED BY:	DRAWN BY DEG
DATE: 8-11-2001		REVISED

*Daniel E. Gilbert*  
 Daniel E. Gilbert, P.S.  
 Reg. Sur. No. 5402

DRAWING NUMBER  
 2001 - 021

INDEXED ON MAP  
 5055

5-444