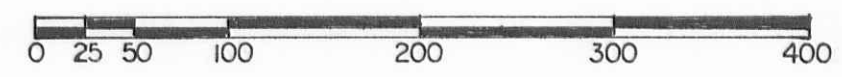
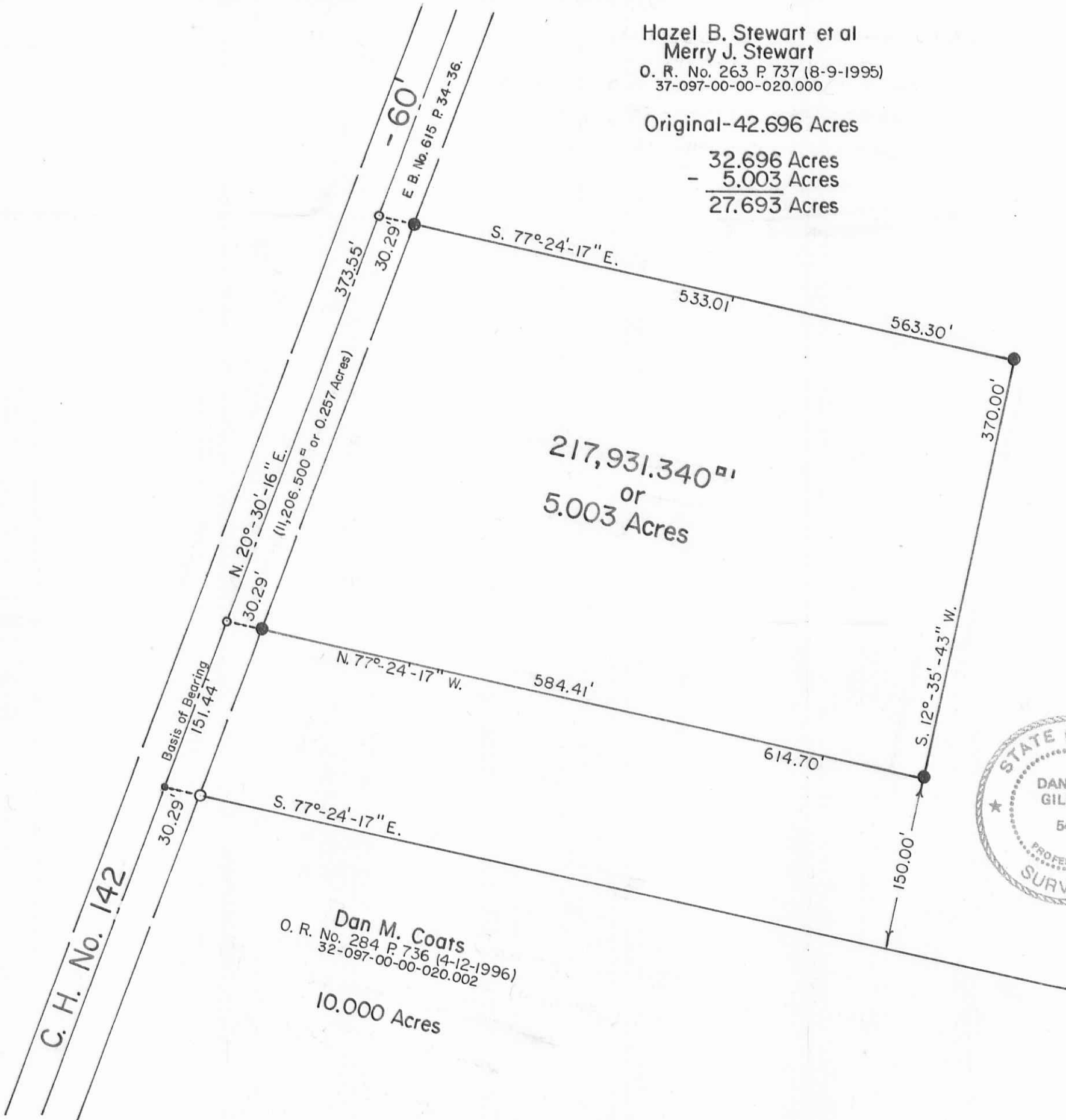


Hazel B. Stewart et al
 Merry J. Stewart
 O. R. No. 263 P. 737 (8-9-1995)
 37-097-00-00-020.000

Original-42.696 Acres

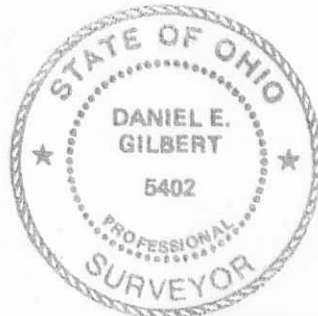
32.696 Acres
 - 5.003 Acres
 27.693 Acres



Scale: 1" = 100'

SYMBOLS:

- - P. K. Nail Fd.
- - R. R. Spikes Set.
- - 5/8" Rebar Fd.
- - 5/8" x 30" Rebars Set.



Dan M. Coats
 O. R. No. 284 P. 736 (4-12-1996)
 32-097-00-00-020.002
 10.000 Acres

Hazel B. Stewart Survey V. M. S. No. 4813, Perry Township, Logan County, Ohio.		
SCALE: 1" = 100'	APPROVED BY:	DRAWN BY DEG
DATE: 12-22-1999		REVISED
<i>Daniel E. Gilbert</i> Daniel E. Gilbert, P.S. Reg. Sur. No. 5402		DRAWING NUMBER 099-047

INDEXED ON MAP
 9054

S-486