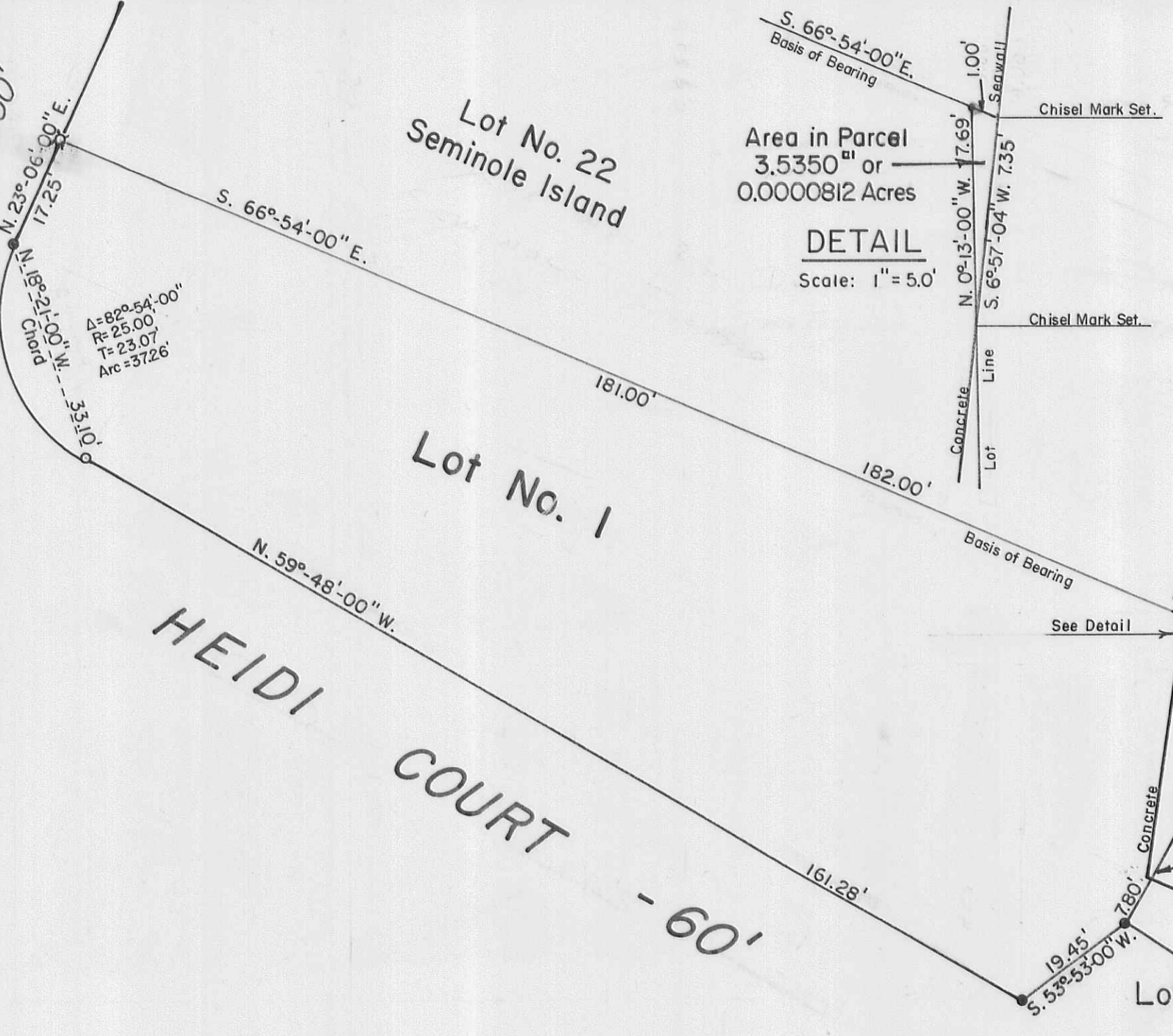


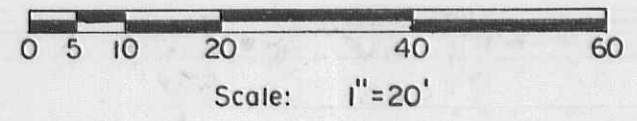
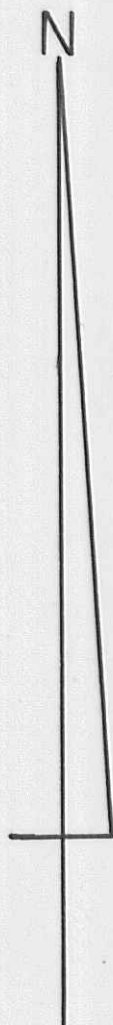
BUCKEYE DR.
C. H. No. 286 - 50'



Area in Parcel
3.5350^m or
0.0000812 Acres

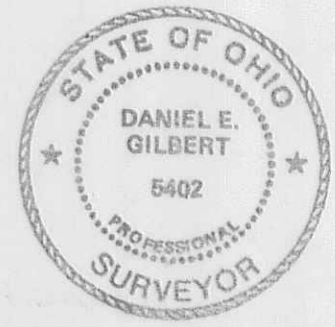
DETAIL
Scale: 1" = 5.0'

$\Delta = 82^{\circ}54'00''$
 $R = 25.00$
 $T = 23.07$
 $Arc = 37.26'$



- SYMBOLS:**
- - Chisel Point Set in Concrete.
 - ⊗ - 3/4" Iron Pipe Fd.
 - - 5/8" Rebars Fd.
 - - 5/8" x 30" Rebar Set.

REFERENCE:
SUNRISE SHORES SUBDIVISION.
(3-15-1979)
Plat Cab. A Slide 601.



Resurvey of Lot No. 1-Sunrise Shores Subdivision,
V. M. S. No. 12276, Stokes Township,
Logan County, Ohio.

SCALE: 1" = 20'	APPROVED BY:	DRAWN BY: DEG
DATE: 10-27-1998		REVISED:

Daniel E. Gilbert, P.S.
Daniel E. Gilbert, P.S.
Reg. Sur. No. 5402

DRAWING NUMBER
098-038

S-496

INDEXED ON MAP
7126